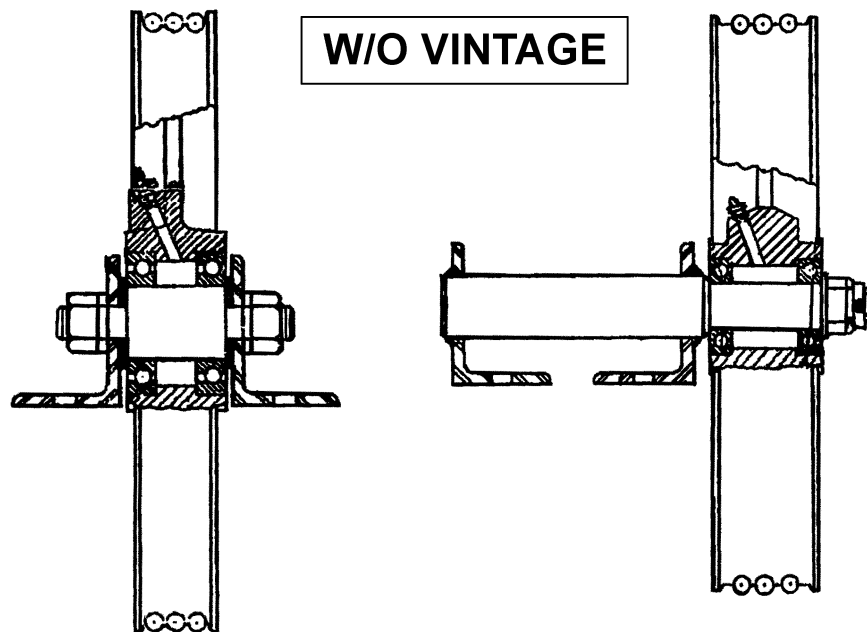


**Overhead Sheave  
Assemblies for 9AT & 14AT  
Geared Machines Below**

**Spare Parts Leaflet**

**16-6327D**

**February 10, 2002 / Page 1 of 3**



**OTIS**

**Safety First!**

**SERVICE ENGINEERING**

**Otis Elevator Company**

**Bloomfield, Connecticut USA**

**Leaflet Description**

This leaflet provides information for types 6327D overhead sheave assemblies used on 9AT and 14AT geared machines below. Please note that a machine mounted in the pit of hoistway is called “a machine below.”

**Leaflet Revisions**

<b>Date Revised</b>	<b>Subject Matter Expert</b>	<b>Reason for Revision</b>
February 10, 2002	Val Sheynkman	New leaflet
---	---	---

**Related Drawings**

<b>Drawing No.</b>	<b>Title</b>	<b>Drawing No.</b>	<b>Title</b>
6327D	Assembly, Deflector & Overhead Sheaves	A6327D	Assembly, Deflector & Overhead Sheaves
---	---	---	---

**Related Documents**

<b>Document ID</b>	<b>Title</b>
---	---
---	---

**Subject Matter Expert**

<b>Name</b>	<b>Department</b>
Val Sheynkman	OSC Service Engineering

**About Spare Parts Leaflets...**

This document lists the lowest replaceable units (LRUs) for the standard version of the product. The LRUs are chosen by a team of Otis associates representing engineering and manufacturing.

While goal of this document is to make parts identification as easy as possible, the document cannot be all-inclusive. Elevator and escalator contracts classified as “special” or “custom” are not addressed here. For such contracts, please refer to specified information, the contract folder, TIPs, Field Education Articles, Construction Letters, etc. for further information.

If you have any suggestions about this document, please contact the subject matter expert listed on this page.

# Overhead Sheave Assemblies for 9AT & 14AT Geared Machines Below

**16-6327D**

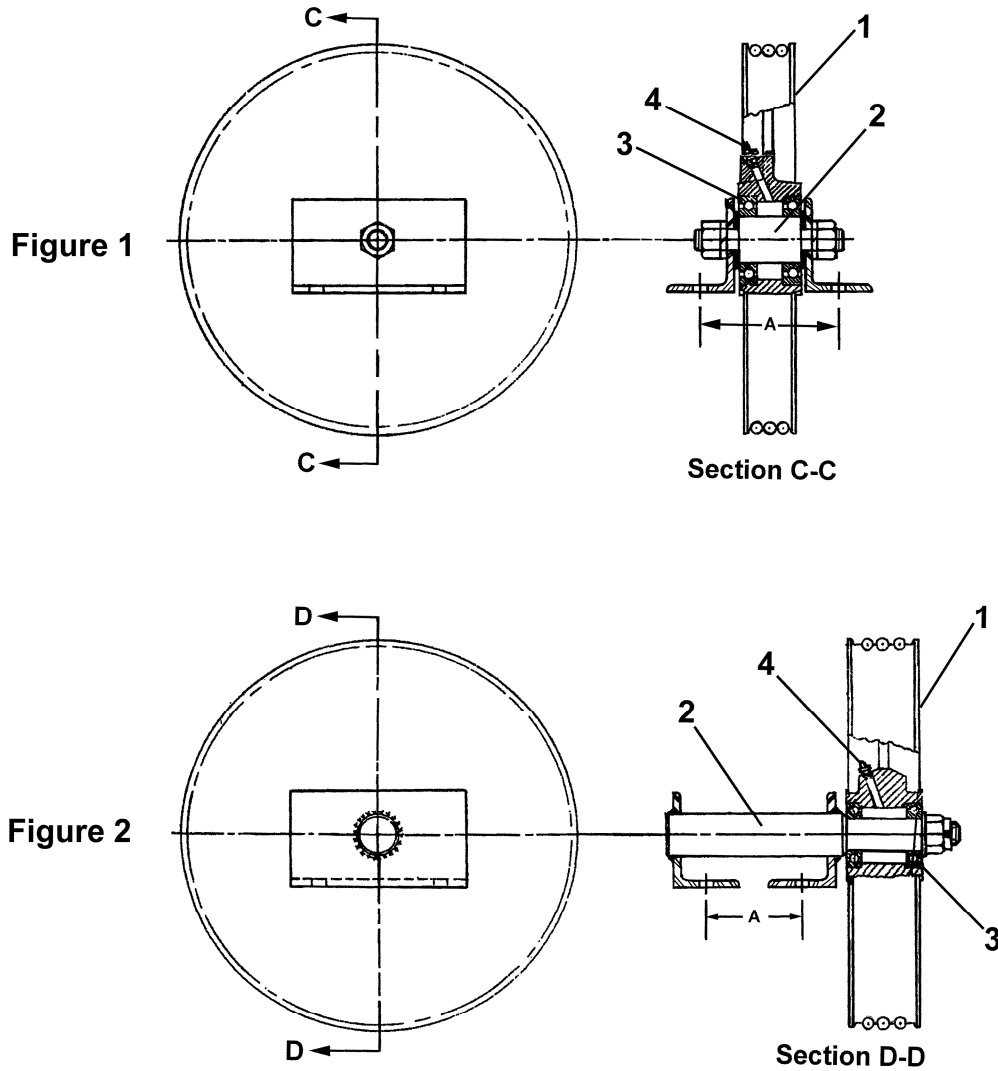


Figure No.	"A" (in.)	Sheave Ø (in.)	(QTY) & Rope Ø	Ref. 1	Ref. 2	Ref. 3	Ref. 4
				Sheave P/N	Shaft P/N	Bearing P/N	Grease Fitting P/N
1	5.63	14-1/2	(3) 3/8 in.	265E3	A495A3	207AF3	435C1
	7.00	20.00	(3) 1/2 in.	B263C3	A495A5	207Z78	
2	5.00		(4) 1/2 in.	263J2	A77AH3		
	5.00						

**NOTE:** "A" is the distance between mounting holes.