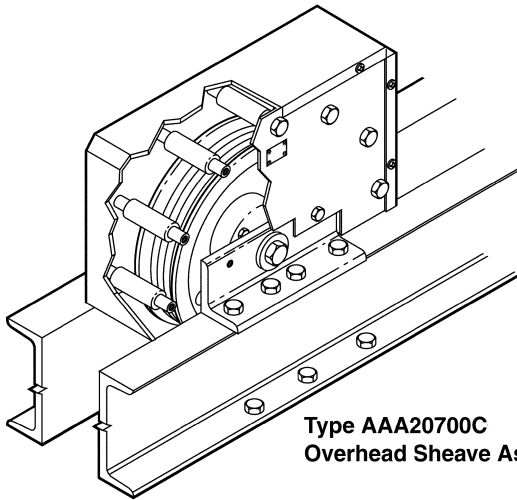


Overhead Sheave Assemblies

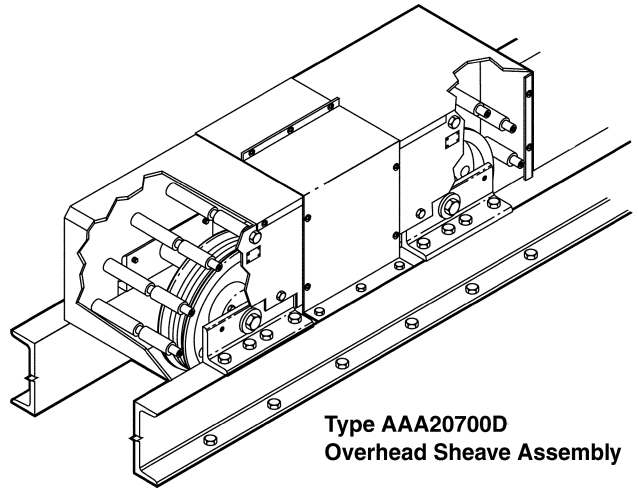
Spare Parts Leaflet

16-AAA20700C

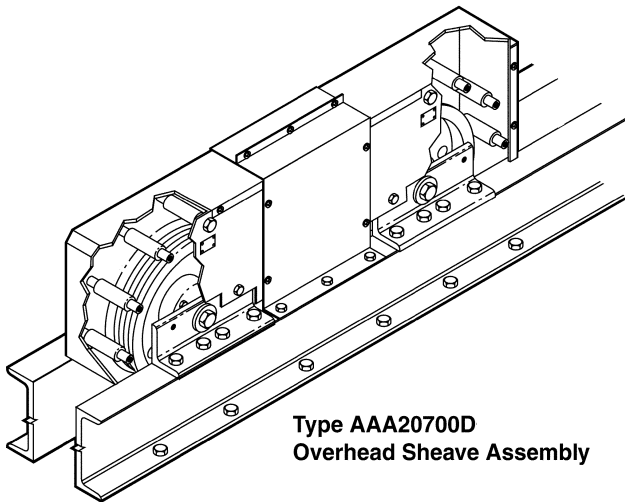
May 3, 2023 / Page 1 of 22



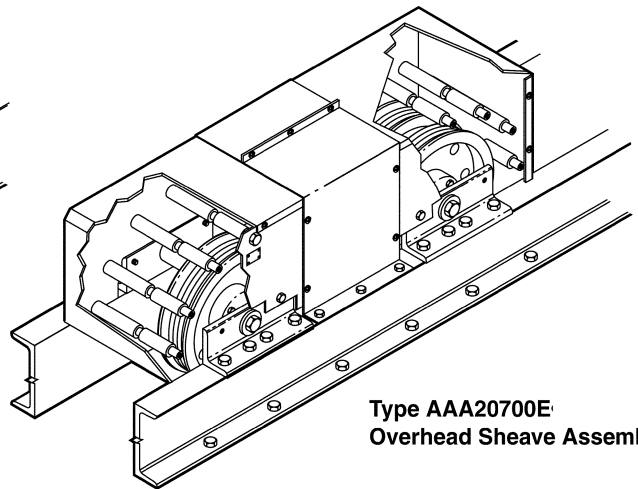
**Type AAA20700C
Overhead Sheave Assembly**



**Type AAA20700D
Overhead Sheave Assembly**



**Type AAA20700D
Overhead Sheave Assembly**



**Type AAA20700E
Overhead Sheave Assembly**

OTIS

This document does not contain any technical data subject to EAR or ITAR

SERVICE ENGINEERING

Otis Elevator Company

Bloomfield, Connecticut USA

Unpublished Work—© Otis Elevator Co.; 2023

Leaflet Description

This leaflet provides spare parts information for types AAA20700C, AAA20700D, and AAA20700E overhead sheave assemblies used on MVS system geared machines.

Leaflet Revisions

Date Revised	Subject Matter Expert	Reason for Revision
August 1, 2000	Sean Mismas	New Leaflet
April 23, 2008	Val Sheynkman	Updated Parts Information
January 16, 2013	Val Sheynkman	Updated history page
August 13, 2014	Gary Mendrala	Corrected part number on p. 11
May 3, 2023	Gary Mendrala	Added covers, angles, retainers to pages 9–22

Related Drawings

Drawing No.	Title	Drawing No.	Title
AAA20700C	- - -	AAA20700E	- - -
AAA20700D	- - -	AAA29000F	- - -

Related Documents

Document ID	Title
TIP 10-0-10	Sheave ordering guidelines roller bearing conversions
SPL 16-A6612J	2:1 Sheaves, common components

Subject Matter Expert

Name	Department
Gary Mendrala	OSC Service Engineering

About Spare Parts Leaflets...

This document lists the lowest replaceable units (LRUs) for the standard version of the product. The LRUs are chosen by a team of Otis associates representing engineering and manufacturing.

While goal of this document is to make parts identification as easy as possible, the document cannot be all-inclusive. Elevator and escalator contracts classified as “special” or “custom” are not addressed here. For such contracts, please refer to specified information, the contract folder, TIPs, Field Education Articles, Construction Letters, etc. for further information.

If you have any suggestions about this document, please contact the subject matter expert listed on this page. Refer to SPL 16-AAA6612J for common components covers, bearings.

To determine correct sheave replacement:

1. Measure spacing between beams (👁️ dimension "A").
2. Measure spacing between angles (👁️ dimension "B").
3. Measure sheave diameter.
4. Count number of ropes.
5. Count number of sheave grooves.

NOTE: Shaft diameter may need to be measured for certain arrangements.

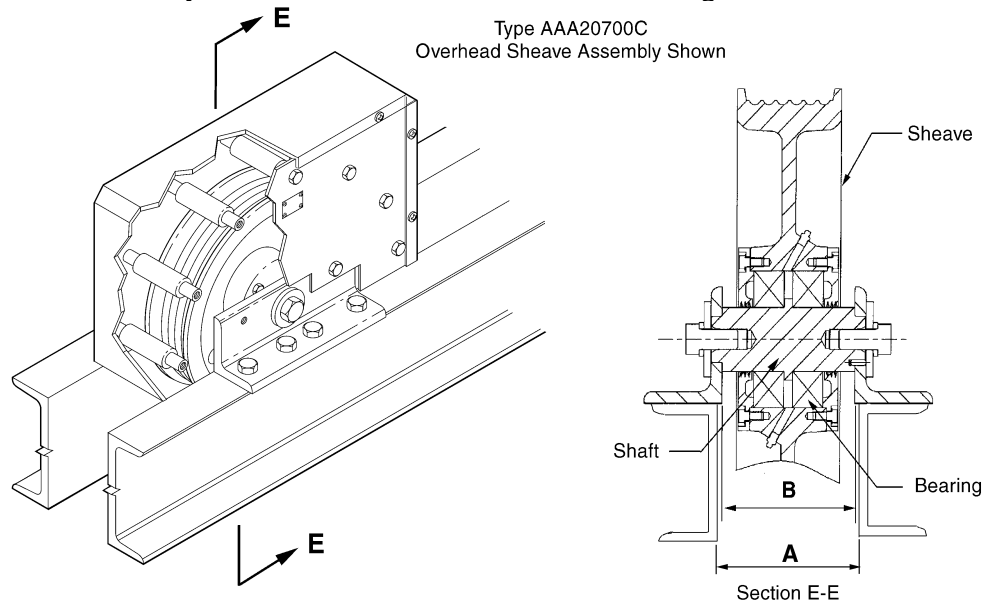
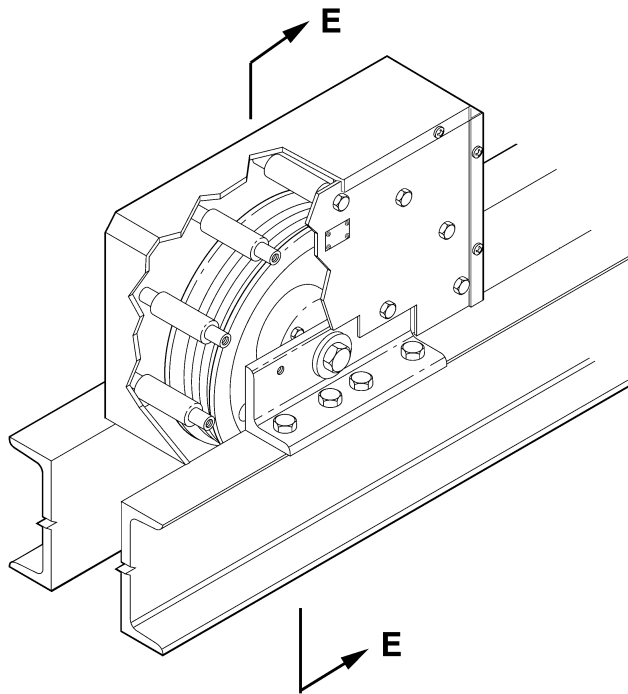


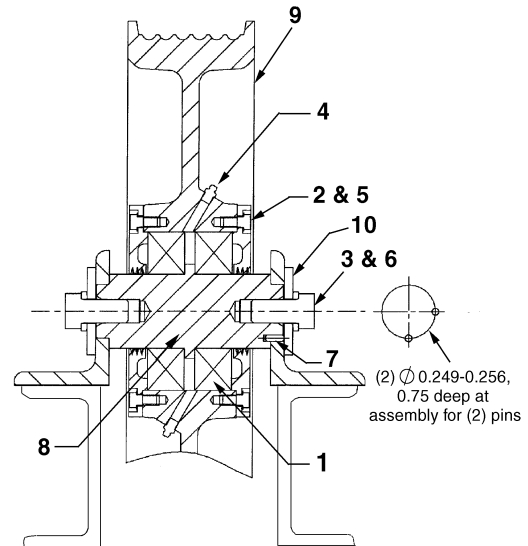
Table of Contents

PAGE	DESCRIPTION
👁️ pp. 4–8	Provides a general list of single overhead sheave components, including all hardware, bearing type, shaft type, and sheave type information.
👁️ pp. 9–12	Lists specific bearing, shaft, and sheave part numbers along with measurement information for single overhead sheave assemblies.
👁️ pp. 13–17	Lists specific bearing, shaft, and sheave part numbers along with measurement information for double overhead sheave assemblies.
👁️ pp. 18-21	Lists specific bearing, shaft, and sheave part numbers along with measurement information for triple overhead sheave assemblies.

NOTE: Due to the length of the specifying table on pages 9-21, the same sets of illustrations are repeated to allow the field personnel easy reference to the location of the parts within the assembly.

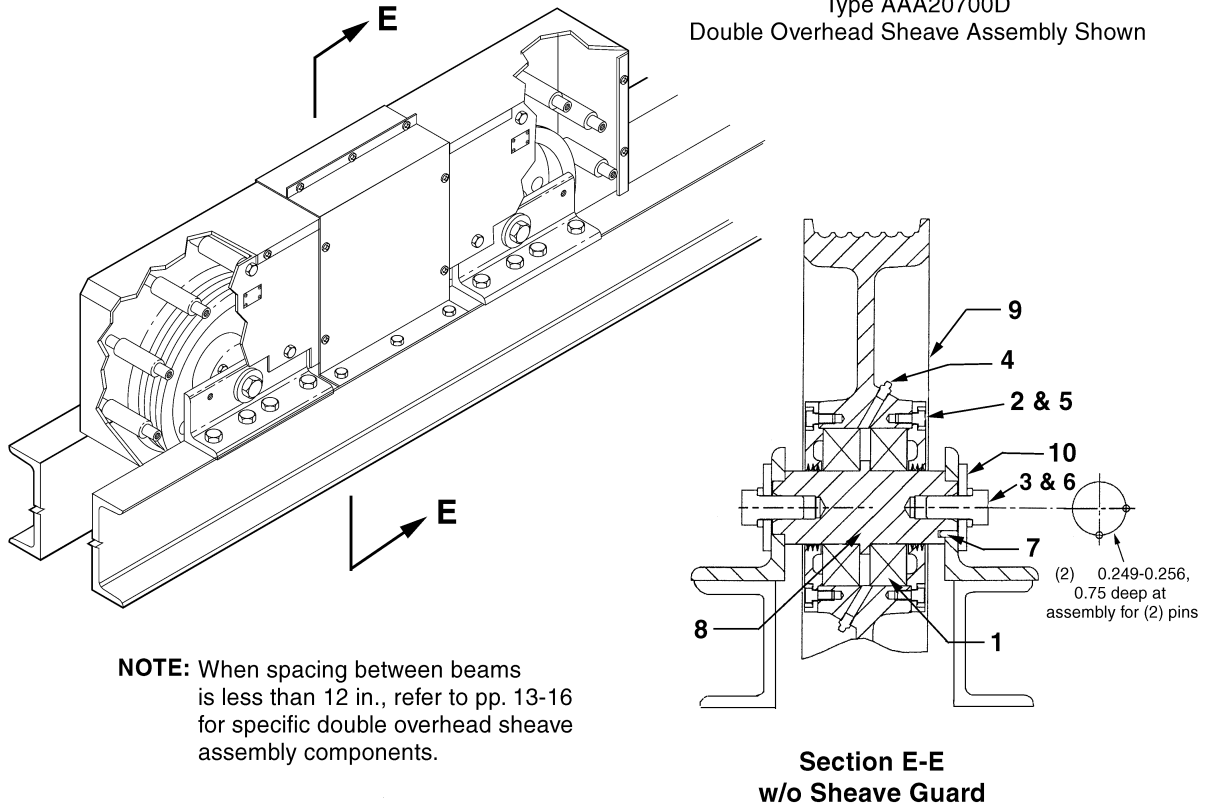


Type AAA20700C
Overhead Sheave Assembly Shown



Section E-E
w/o Sheave Guard

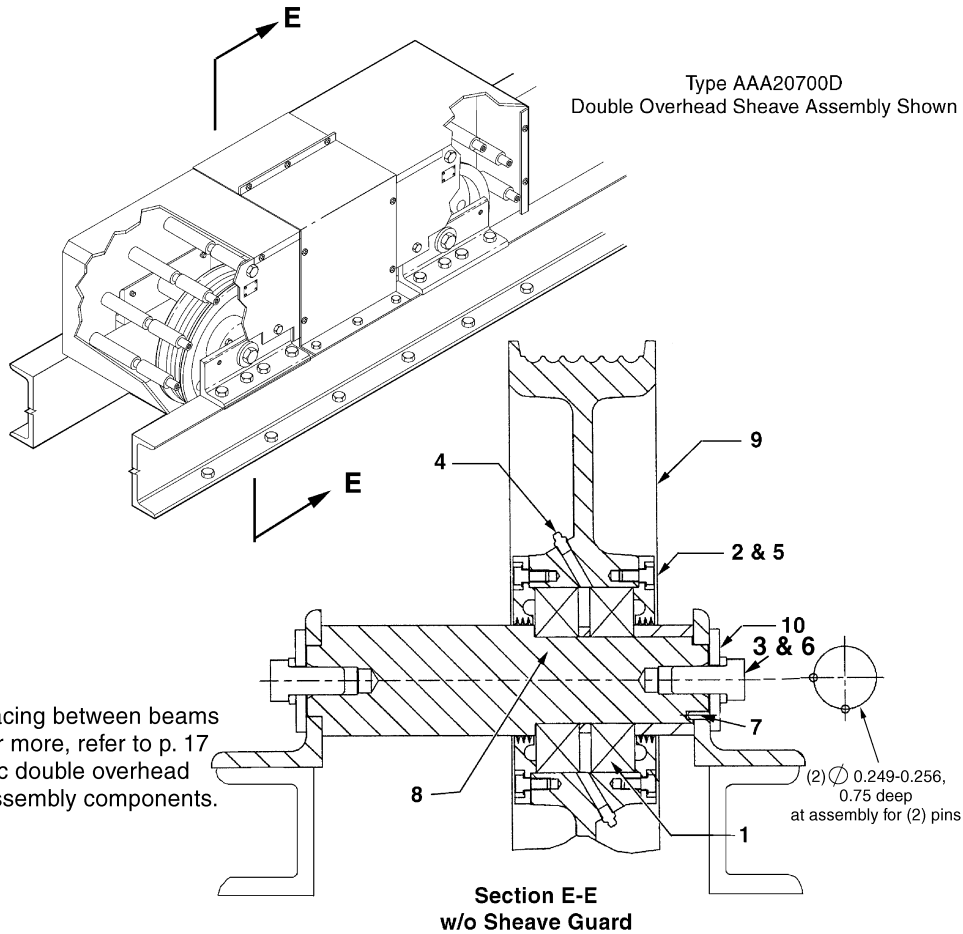
REF. NO.	W/O VINTAGE PART or ML	DESCRIPTION
1	---	Bearing, Type 209J_, Detail pp. 9-12
2	---	Bolt, 3/8-16 x 3/4 in.
3	---	Bolt, 7/8-9 x 1-3/4 in.
4	435C1	Fitting, Grease
5	---	Lockwasher, 3/8 in.
6	---	Lockwasher, 7/8 in.
7	78A1	Pin
8	---	Shaft, Type _495_, Detail pp. 9-12
9	---	Sheave, Type _266_, Detail pp. 9-12
10	127VB78	Washer
11	VP-420240	Otis Grease #12 (not shown)



REF. NO.	W/O VINTAGE PART or ML	DESCRIPTION
1	---	Bearing, Type 209J_, Detail pp. 13-16
2	---	Bolt, 3/8-16 x 3/4 in.
3	---	Bolt, 7/8-9 x 1-3/4 in.
4	435C1	Fitting, Grease
5	---	Lockwasher, 3/8 in.
6	---	Lockwasher, 7/8 in.
7	78A1	Pin
8	---	Shaft, Type _495_, Detail pp. 13-16
9	---	Sheave, Type _266_, Detail pp. 13-16
10	127VB78	Washer
11	VP-420240	Otis Grease #12 (not shown)

16-AAA20700C

Double Overhead Sheave Components

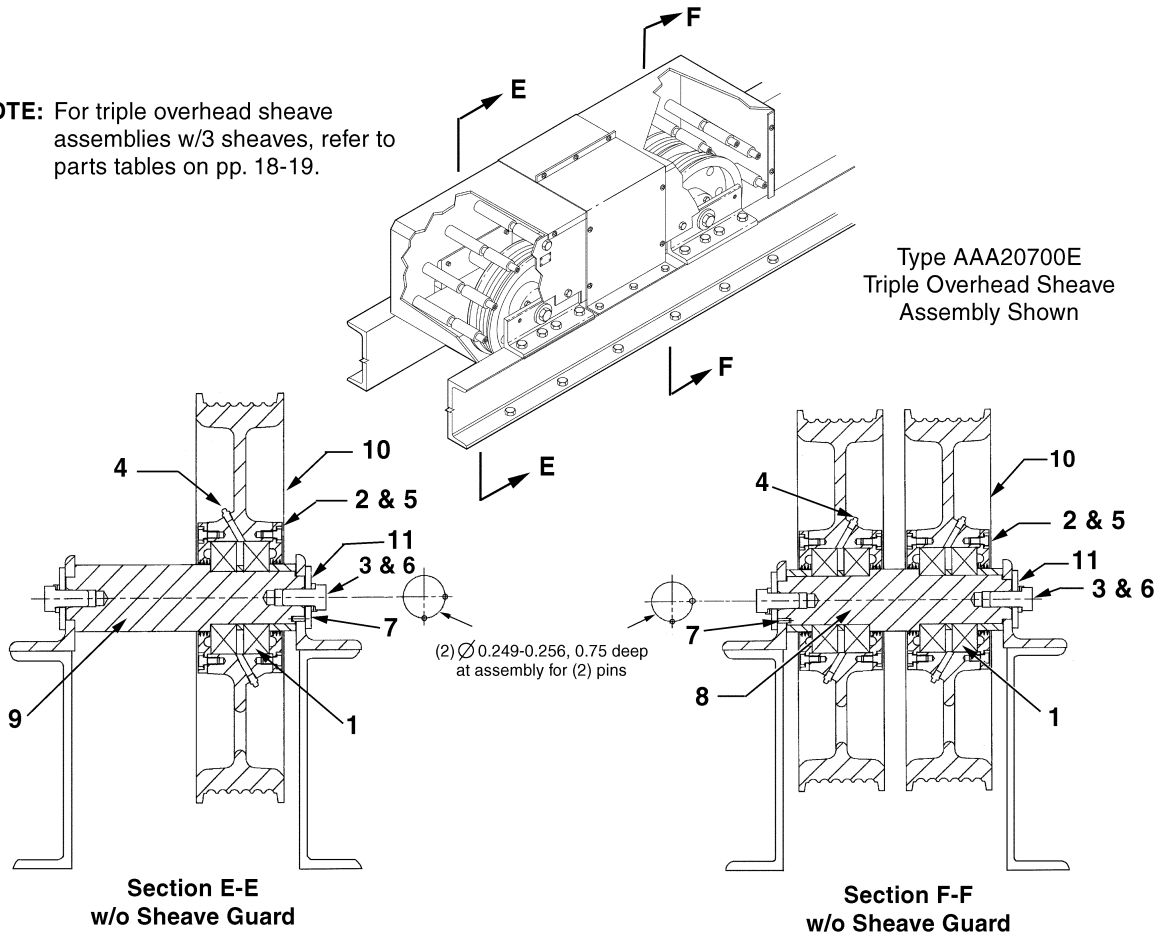


REF. NO.	W/O VINTAGE PART or ML	DESCRIPTION
1	---	Bearing, Type 209J_, Detail p. 17
2	---	Bolt, 3/8-16 x 3/4 in.
3	---	Bolt, 7/8-9 x 1-3/4 in.
4	435C1	Fitting, Grease
5	---	Lockwasher, 3/8 in.
6	---	Lockwasher, 7/8 in.
7	78A1	Pin
8	---	Shaft, Type _495_, Detail p. 17
9	---	Sheave, Type _266_, Detail p. 17
10	127VB78	Washer
11	VP-420240	Otis Grease #12 (not shown)

Triple Overhead Sheave Components

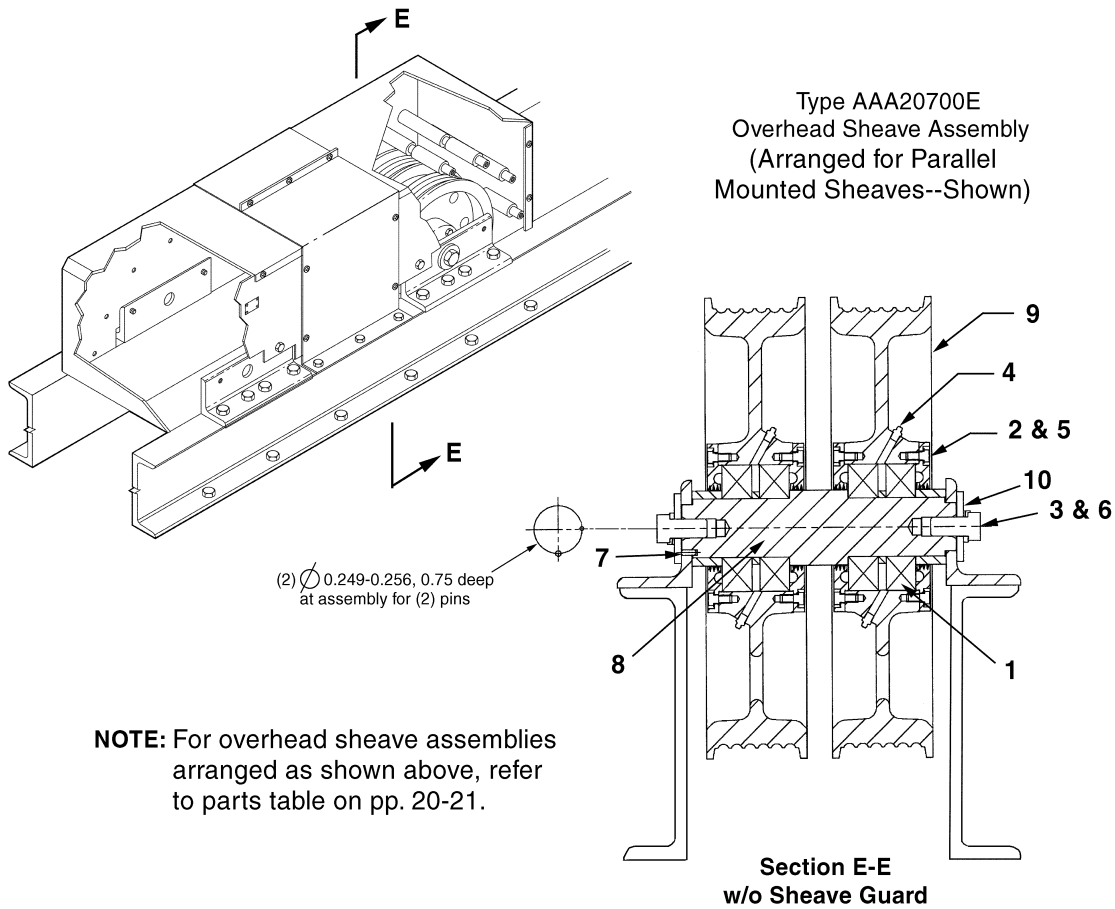
16-AAA20700C

NOTE: For triple overhead sheave assemblies w/3 sheaves, refer to parts tables on pp. 18-19.



REF. NO.	W/O VINTAGE PART or ML	DESCRIPTION
1	---	Bearing, Type 209J, Detail pp. 18-19
2	---	Bolt, 3/8-16 x 3/4 in.
3	---	Bolt, 7/8-9 x 1-3/4 in.
4	435C1	Fitting, Grease
5	---	Lockwasher, 3/8 in.
6	---	Lockwasher, 7/8 in.
7	78A1	Pin
8	---	Shaft, Type _495BH_, Detail pp. 18-19
9	---	Shaft, Type _495BG_, Detail pp. 18-19
10	---	Sheave, Type _266_, Detail pp. 18-19
11	127VB78	Washer
12	VP-420240	Otis Grease #12 (not shown)

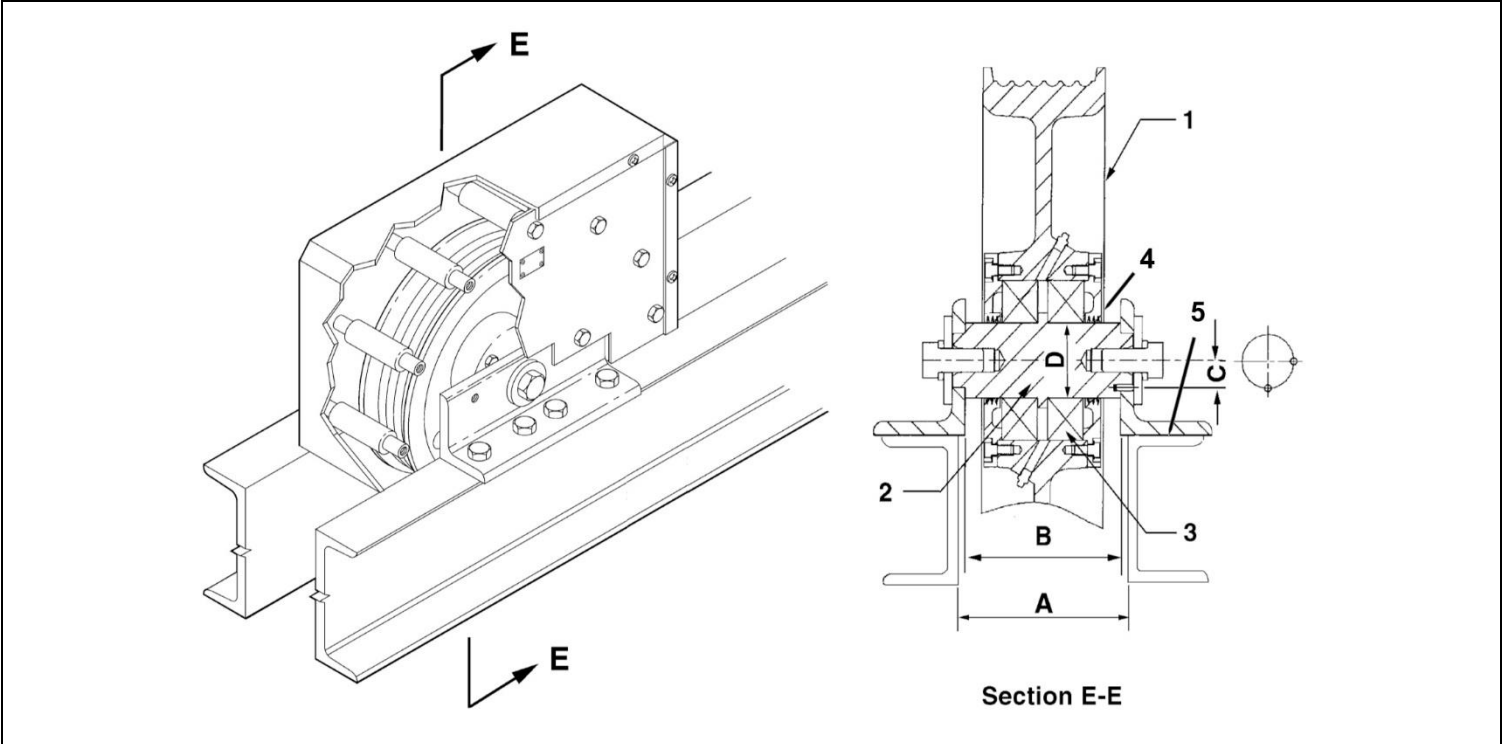
(Continued on Next Page)



REF. NO.	W/O VINTAGE PART or ML	DESCRIPTION
1	---	Bearing, Type 209J_, Detail pp. 20-21
2	---	Bolt, 3/8-16 x 3/4 in.
3	---	Bolt, 7/8-9 x 1-3/4 in.
4	435C1	Fitting, Grease
5	---	Lockwasher, 3/8 in.
6	---	Lockwasher, 7/8 in.
7	78A1	Pin
8	---	Shaft, Type _495_, Detail pp. 20-21
9	---	Sheave, Type _266_, Detail pp. 20-21
10	127VB78	Washer
11	VP-420240	Otis Grease #12 (not shown)

Sheaves, Bearings, and Shafts for Type AAA20700C Single Overhead Sheave

16-AAA20700C

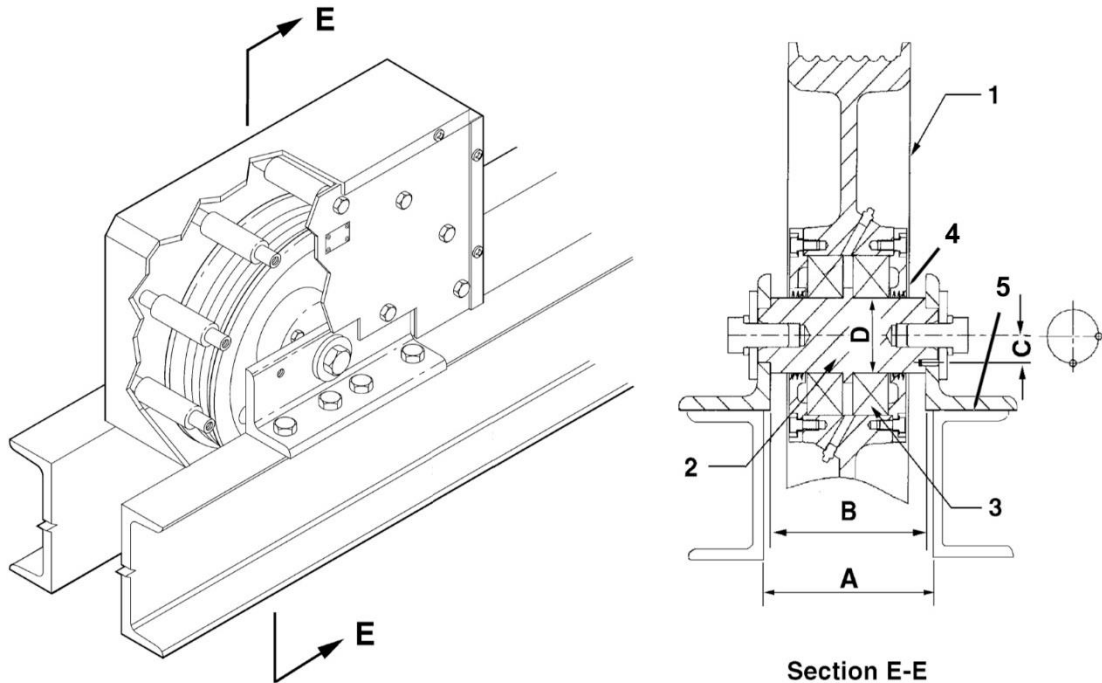


W/O VINTAGE										
"A" (in.) (BEAM SPACING)	"B" (in.) (BETWEEN ANGLES)	SHEAVE Ø (in.)	SHAFT Ø "D" (in.)	NUMBER & ROPE Ø	REF. NO. 1 SHEAVE P/N	REF. NO. 2 SHAFT P/N	REF. NO. 3 BEARING P/N	REF. NO. 4 COVER P/N	REF. NO. 5 ANGLE P/N	"C" (in.)
6.12	6.00	20-1/2	2.76	(3) 1/2 in.	266BK4	A495AZ24	209J4	346PJ4	272AVG9	1.0
				(4) 1/2 in.	266BK1					
				(5) 1/2 in.	266BK2					
				(6) 1/2 in.	266BK3					
		22		(3) 1/2 in.	A266AM7	A495AZ23				
				(4) 1/2 in.	A266AM18					
				(5) 1/2 in.	A266AM8					
				(6) 1/2 in.	A266AG9					
		25		(7) 1/2 in.	A266AG10	A495AZ24				
				(3) 1/2 in.	266BG13					
				(4) 1/2 in.	266BG7					
				(5) 1/2 in.	266BG8					
				(6) 1/2 in.	266BG9					
				(7) 1/2 in.	266BG11					
				(8) 1/2 in.	266BG12					
(4) 5/8 in.	266BG10									
(5) 5/8 in.	266BG14									
(6) 5/8 in.	266BG15									

Continued on Next Page)

16-AAA20700C

Sheaves, Bearings, and Shafts for Type AAA20700C Single Overhead Sheave



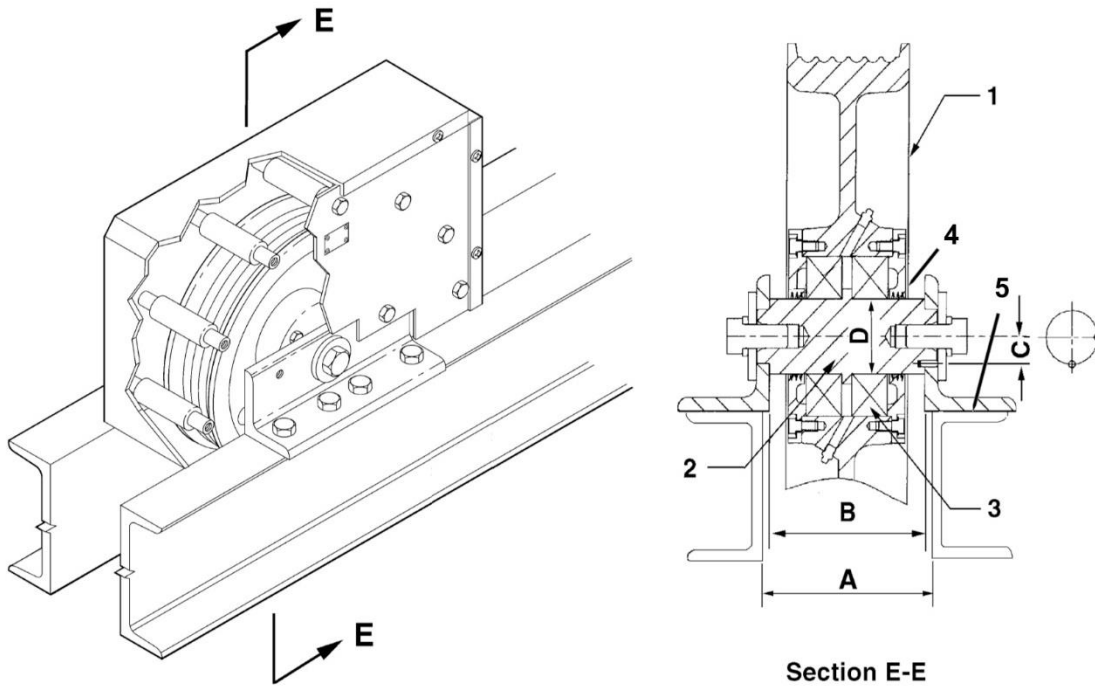
W/O VINTAGE

"A" (in.) (BEAM SPACING)	"B" (in.) (BETWEEN ANGLES)	SHEAVE Ø (in.)	SHAFT Ø "D" (in.)	NUMBER & ROPE Ø	REF. NO. 1	REF. NO. 2	REF. NO. 3	REF. NO. 4	REF. NO. 5	"C" (in.)						
					SHEAVE P/N	SHAFT P/N	BEARING P/N	COVER P/N	ANGLE P/N							
6.12	6.00	28	2.76	(3) 1/2 in.	A266AN6	A495AZ23	209J4	346PJ4	272AVG9	1.00						
				(4) 1/2 in.	A266AN15											
				(5) 1/2 in.	A266AN7											
				(6) 1/2 in.	A266AJ8											
				(7) 1/2 in.	A266AJ28											
				(8) 1/2 in.	A266AJ25											
				(4) 5/8 in.	A266AN26											
				(5) 5/8 in.	A266AJ9											
				(6) 5/8 in.	A266AJ10											
				(7) 5/8 in.	A266AJ24											
8.38	8.25	20-1/2	2.76	(4) 1/2 in.	266BK1	A495AZ22	209J5	346PJ5	272AVG10	1.12						
				(5) 1/2 in.	266BK2											
				(6) 1/2 in.	266BK3											
				(4) 1/2 in.	A266AM20											
		22	3.15	2.76	2.76	(5) 1/2 in.					A266AM10	A495AZ6	209J4	346PJ4	272AVG9	1.12
						(6) 1/2 in.					A266AG4					
						(7) 1/2 in.					A266AG11					
						(8) 1/2 in.					A266AG13					
						A495BA3				1.31						

(Continued on Next Page)

Sheaves, Bearings, and Shafts for Type AAA20700C Single Overhead Sheave

16-AAA20700C

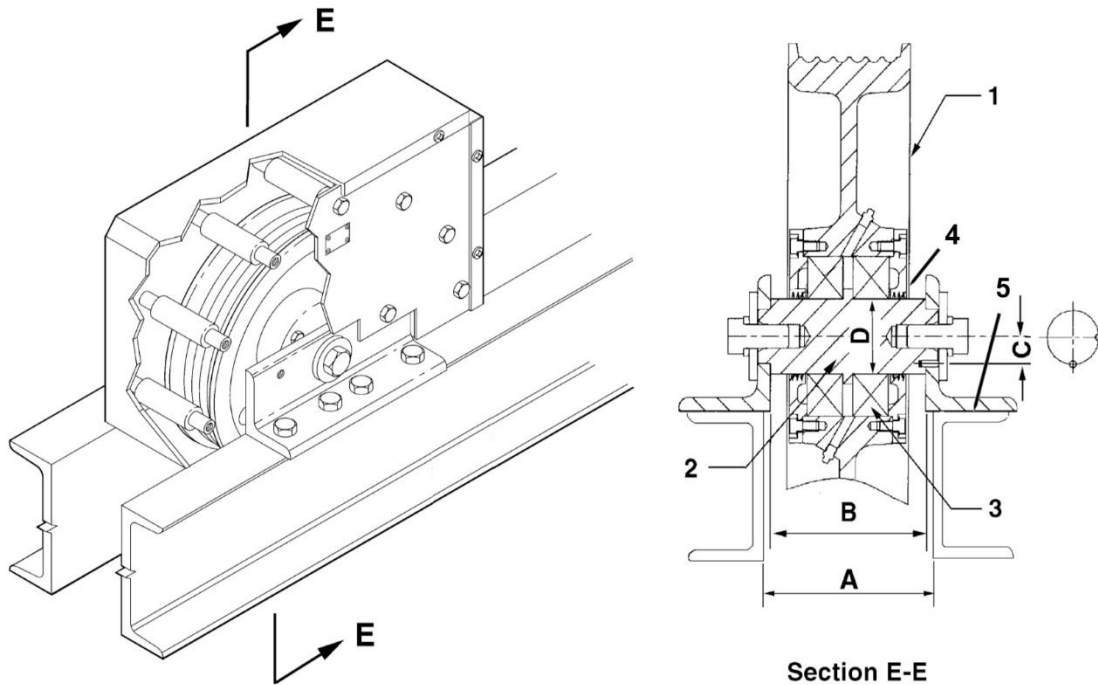


W/O VINTAGE											
"A" (in.) (BEAM SPACING)	"B" (in.) (BETWEEN ANGLES)	SHEAVE Ø (in.)	SHAFT Ø "D" (in.)	NUMBER & ROPE Ø	REF. NO. 1	REF. NO. 2	REF. NO. 3	REF. NO. 4	REF. NO. 5	"C" (in.)	
					SHEAVE P/N	SHAFT P/N	BEARING P/N	COVER P/N	ANGLE P/N		
8.38	8.25	28	2.76	(4) 1/2 in.	A266AK21	A495AZ6	209J4	346PJ4	272AVG9	1.12	
			3.15		A266AK25	A495BA3	209J5	346PJ5	272AVG10	1.31	
			2.76	(5) 1/2 in.	A266AK12	A495AZ6	209J4	346PJ4	272AVG9	1.12	
			3.15		A266AK26	A495BA3	209J5	346PJ5	272AVG10	1.31	
			2.76	(6) 1/2 in.	A266AK13	A495AZ6	209J4	346PJ4	272AVG9	1.12	
			3.15		A266AK17	A495BA3	209J5	346PJ5	272AVG10	1.31	
			3.54		A266AJ21	A495BB2	209J6	346PJ6	272AVG10		
			2.76	(7) 1/2 in.	A266AK22	A495AZ6	209J4	346PJ4	272AVG9	1.12	
			3.15		A266AK27	A495BA3	209J5	346PJ5	272AVG10	1.31	
			2.76	(8) 1/2 in.	A266AK14	A495AZ6	209J4	346PJ4	272AVG9	1.12	
			3.15		A266AK28	A495BA3	209J5	346PJ5	272AVG10	1.31	
			2.76	(4) 5/8 in.	A266AK24	A495AZ6	209J4	346PJ4	272AVG9	1.12	
			3.15		A266AK29	A495BA3	209J5	346PJ5	272AVG10	1.31	
			2.76	(5) 5/8 in.	A266AJ14	A495AZ6	209J4	346PJ4	272AVG9	1.12	
			3.15		A266AJ16	A495BA3	209J5	346PJ5	272AVG10	1.31	
			2.76	(6) 5/8 in.	A266AJ15	A495AZ6	209J4	346PJ4	272AVG9	1.12	
			3.15		A266AJ17	A495BA3	209J5	346PJ5	272AVG10	1.31	
			3.54		A266AJ22	A495BB2	209J6	346PJ6	272AVG10		
			2.76	(7) 5/8 in.	A266AK16	A495AZ6	209J4	346PJ4	272AVG9	1.12	
			3.15		A266AK19	A495BA3	209J5	346PJ5	272AVG10	1.31	

(Continued on Next Page)

16-AAA20700C

Sheaves, Bearings, and Shafts for Type AAA20700C Single Overhead Sheave

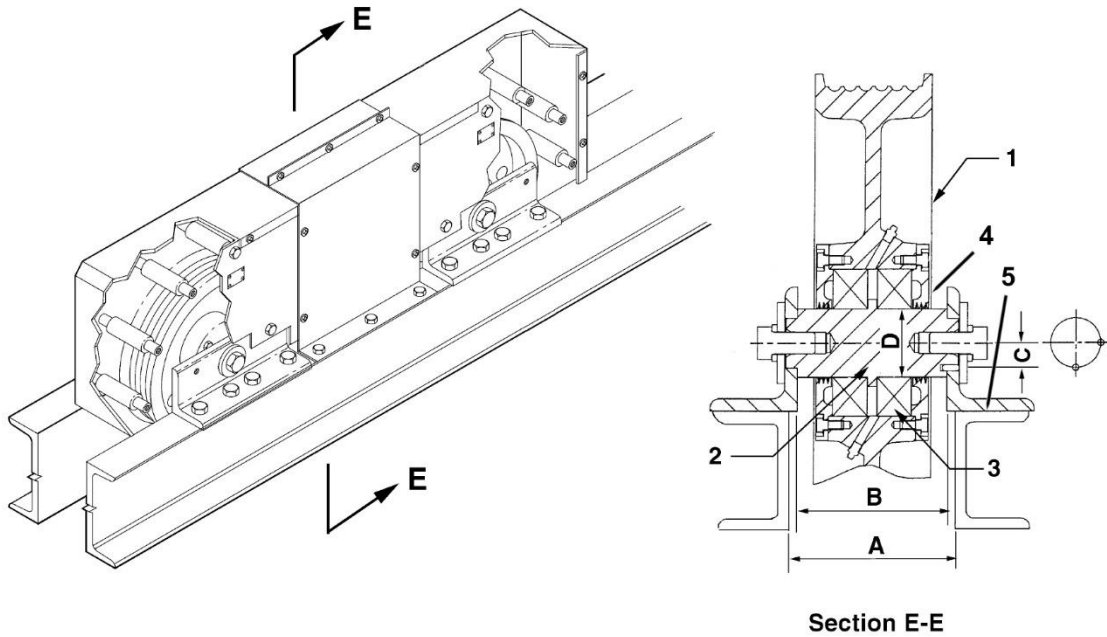


W/O VINTAGE

"A" (in.) (BEAM SPACING)	"B" (in.) (BETWEEN ANGLES)	SHEAVE Ø (in.)	SHAFT Ø "D" (in.)	NUMBER & ROPE Ø	REF. NO. 1	REF. NO. 2	REF. NO. 3	REF. NO. 4	REF. NO. 5	"C" (in.)
					SHEAVE P/N	SHAFT P/N	BEARING P/N	COVER P/N	ANGLE P/N	
8.38	8.25	34	2.76	(4) 1/2 in.	A266AR37	A495AZ6	209J4	346PJ4	272AVG9	1.12
				(5) 1/2 in.	A266AR20					
				(6) 1/2 in.	A266AR21					
				(7) 1/2 in.	A266AR41					
				(8) 1/2 in.	A266AR42					
				(4) 5/8 in.	A266AR43					
				(5) 5/8 in.	A266AR22					
		3.15	A266AR24	A495BA3	209J5	346PJ5	272AVG10	1.31		
		2.76	A266AR23	A495AZ6	209J4	346PJ4	272AVG9	1.12		
		3.15	(6) 5/8 in.	A266AR25	A495BA3	209J5	346PJ5	272AVG10	1.31	
		3.54	A266AR31	A495BB2	209J6	346PJ6	272AVG10			
		40	2.76	(4) 1/2 in.	A266AV30	A495AZ6	209J4	346PJ4	272AVG9	1.12
				(5) 1/2 in.	A266AV15					
				(6) 1/2 in.	A266AV16					
(7) 1/2 in.	A266AV36									
(8) 1/2 in.	A266AV37									
(4) 5/8 in.	A266AV42			A495AZ21						
(5) 5/8 in.	A266AV17			A495AZ6						
3.15	A266AV19	A495BA3	209J5	346PJ5	272AVG10	1.31				
2.76	A266AV18	A495AZ6	209J4	346PJ4	272AVG9	1.12				
3.15	(6) 5/8 in.	A266AV20	A495BA3	209J5	346PJ5	272AVG10	1.31			
3.54	A266AV25	A495BB2	209J6	346PJ6	272AVG10					

Sheaves, Bearings, and Shafts for Type AAA20700D Double Overhead Sheave

16-AAA20700C



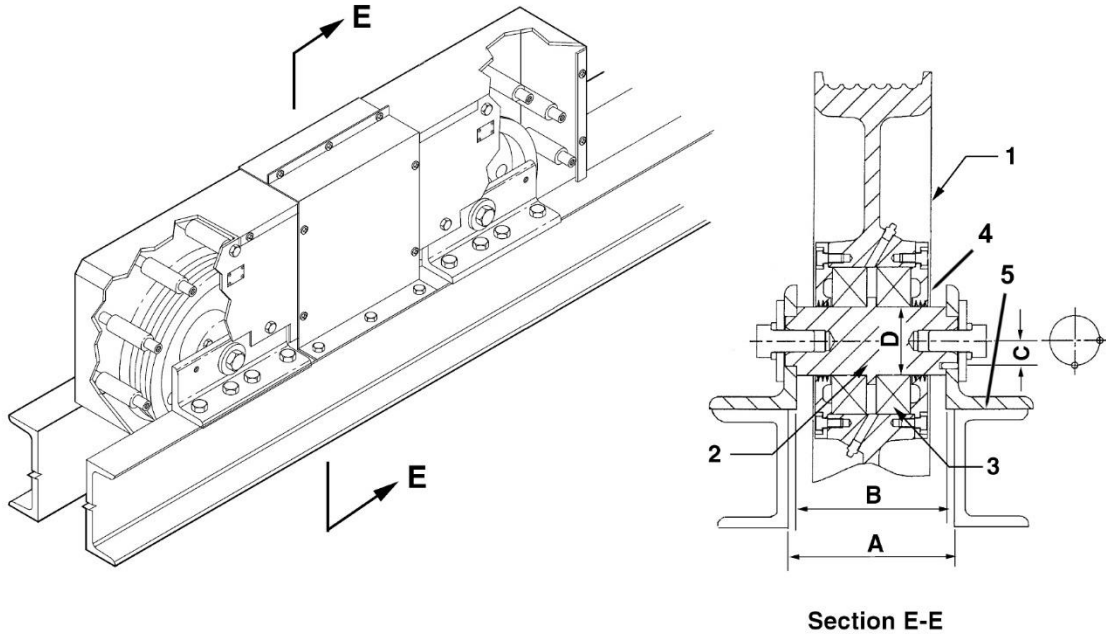
W/O VINTAGE

"A" (in.) (BEAM SPACING)	"B" (in.) (BETWEEN ANGLES)	SHEAVE Ø (in.)	SHAFT Ø "D" (in.)	NUMBER & ROPE Ø	REF. NO. 1	REF. NO. 2	REF. NO. 3	REF. NO. 4	REF. NO. 5	"C" (in.)
					SHEAVE P/N	SHAFT P/N	BEARING P/N	COVER P/N	ANGLE P/N	
6.12	6.00	20-1/2	2.76	(3) 1/2 in.	266BK4	A495AZ16	209J4	346PJ4	272AVG9	1.00
				(4) 1/2 in.	266BK1					
				(5) 1/2 in.	266BK2					
				(6) 1/2 in.	266BK3					
		22		(3) 1/2 in.	A266AM7	A495AZ2				
				(4) 1/2 in.	A266AM18					
				(5) 1/2 in.	A266AM8					
				(6) 1/2 in.	A266AG9					
		25		(7) 1/2 in.	A266AG10	A495AZ16				
				(3) 1/2 in.	266BG13					
				(4) 1/2 in.	266BG7					
				(5) 1/2 in.	266BG8					
				(6) 1/2 in.	266BG9					
				(7) 1/2 in.	266BG11					
				(8) 1/2 in.	266BG12					
(4) 5/8 in.	266BG10									
(5) 5/8 in.	266BG14									
(6) 5/8 in.	266BG15									

(Continued on Next Page)

16-AAA20700C

Sheaves, Bearings, and Shafts for Type AAA20700D Double Overhead Sheave



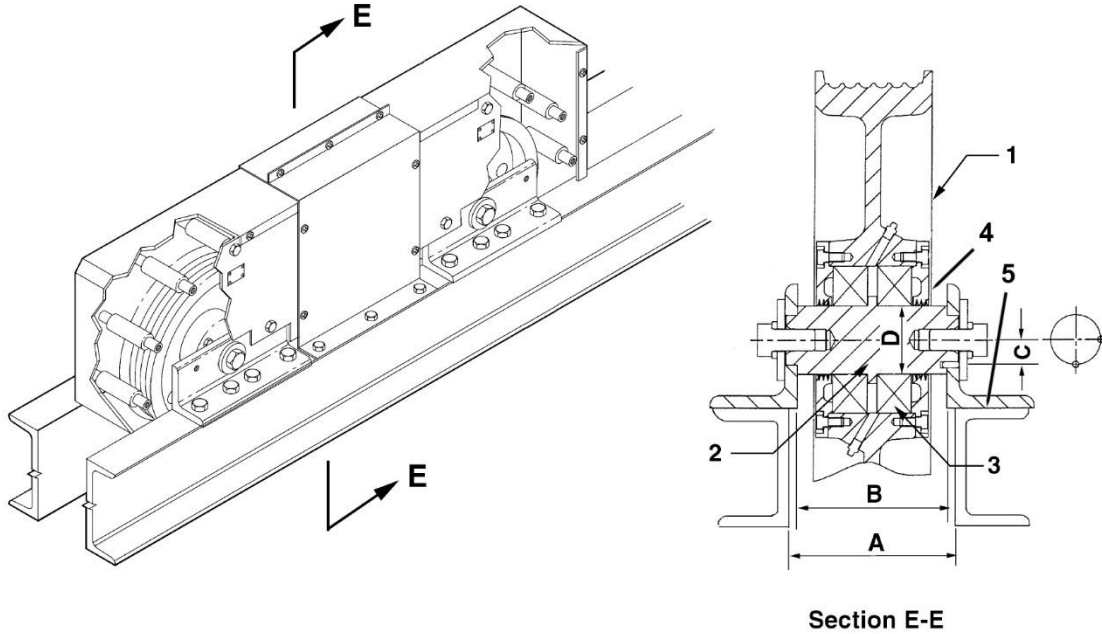
W/O VINTAGE

"A" (in.) (BEAM SPACING)	"B" (in.) (BETWEEN ANGLES)	SHEAVE Ø (in.)	SHAFT Ø "D" (in.)	NUMBER & ROPE Ø	REF. NO. 1	REF. NO. 2	REF. NO. 3	REF. NO. 4	REF. NO. 5	"C" (in.)							
					SHEAVE P/N	SHAFT P/N	BEARING P/N	COVER P/N	ANGLE P/N								
6.12	6.00	28	2.76	(3) 1/2 in.	A266AN6	A495AZ2	209J4	346PJ4	272AVG9	1.00							
				(4) 1/2 in.	A266AN15												
				(5) 1/2 in.	A266AN7												
				(6) 1/2 in.	A266AJ8												
				(7) 1/2 in.	A266AJ28												
				(8) 1/2 in.	A266AJ25												
				(4) 5/8 in.	A266AN26												
				(5) 5/8 in.	A266AJ9												
				(6) 5/8 in.	A266AJ10												
8.38	8.25	20-1/2	2.76	(4) 1/2 in.	266BK1	A495AZ22	209J4	346PJ4	272AVG9	1.12							
				(5) 1/2 in.	266BK2												
				(6) 1/2 in.	266BK3												
		22		8.25	22	2.76					(4) 1/2 in.	A266AM20	A495AZ6	209J4	346PJ4	272AVG9	1.12
											(5) 1/2 in.	A266AM10					
											(6) 1/2 in.	A266AG4					
											(7) 1/2 in.	A266AG11	A495AZ21				
											(8) 1/2 in.	A266AG13					

(Continued on Next Page)

Sheaves, Bearings, and Shafts for Type AAA20700D Double Overhead Sheave

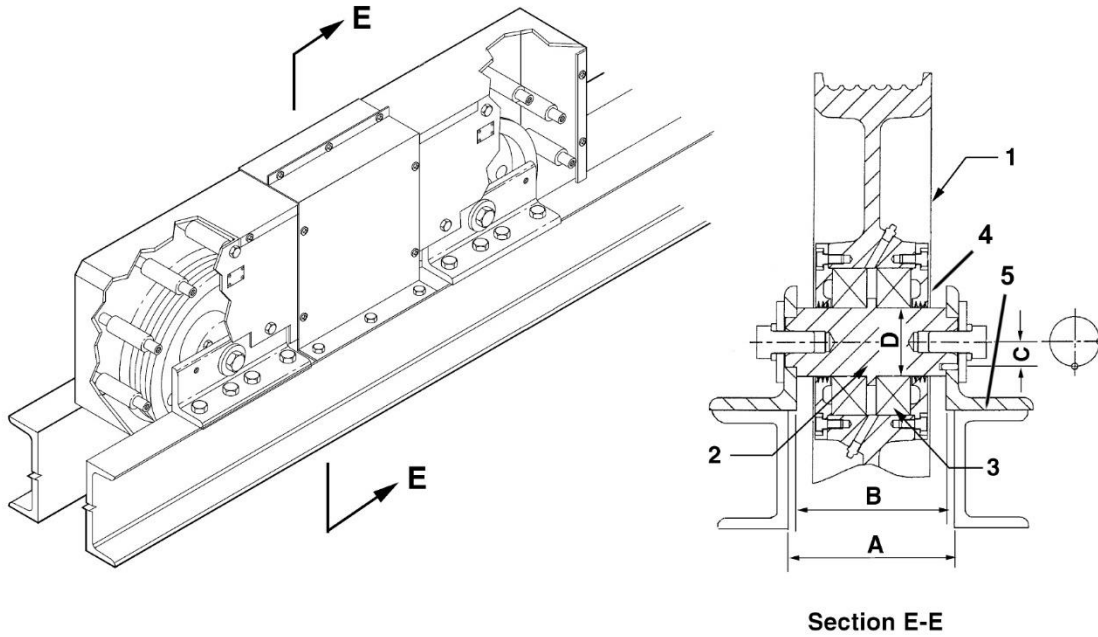
16-AAA20700C



W/O VINTAGE										
"A" (in.) BEAM SPACING	"B" (in.) BETWEEN ANGLES	SHEAVE Ø (in.)	SHAFT Ø "D" (in.)	NUMBER & ROPE Ø	REF. NO. 1	REF. NO. 2	REF. NO. 3	REF. NO. 4	REF. NO. 5	"C" (in.)
					SHEAVE P/N	SHAFT P/N	BEARING P/N	COVER P/N	ANGLE P/N	
8.38	8.25	28	2.76	(4) 1/2 in.	A266AK21	A495AZ6	209J4	346PJ4	272AVG9	1.12
			3.15		A266AK25	A495BA3	209J5	346PJ5	272AVG10	1.31
			2.76	(5) 1/2 in.	A266AK12	A495AZ6	209J4	346PJ4	272AVG9	1.12
			3.15		A266AK26	A495BA3	209J5	346PJ5	272AVG10	1.31
			2.76	(6) 1/2 in.	A266AK13	A495AZ6	209J4	346PJ4	272AVG9	1.12
			3.15		A266AK17	A495BA3	209J5	346PJ5	272AVG10	1.31
			2.76	(7) 1/2 in.	A266AK22	A495AZ6	209J4	346PJ4	272AVG9	1.12
			3.15		A266AK27	A495BA3	209J5	346PJ5	272AVG10	1.31
			2.76	(8) 1/2 in.	A266AK14	A495AZ6	209J4	346PJ4	272AVG9	1.12
			3.15		A266AK28	A495BA3	209J5	346PJ5	272AVG10	1.31
			2.76	(4) 5/8 in.	A266AK24	A495AZ6	209J4	346PJ4	272AVG9	1.12
			3.15		A266AK29	A495BA3	209J5	346PJ5	272AVG10	1.31
			2.76	(5) 5/8 in.	A266AJ14	A495AZ6	209J4	346PJ4	272AVG9	1.12
			3.15		A266AJ16	A495BA3	209J5	346PJ5	272AVG10	1.31
			2.76	(6) 5/8 in.	A266AJ15	A495AZ6	209J4	346PJ4	272AVG9	1.12
			3.15		A266AJ17	A495BA3	209J5	346PJ5	272AVG10	1.31
			2.76	(7) 5/8 in.	A266AK16	A495AZ6	209J4	346PJ4	272AVG9	1.12
			3.15		A266AK19	A495BA3	209J5	346PJ5	272AVG10	1.31

(Continued on Next Page)

**Sheaves, Bearings, and Shafts for
Type AAA20700D Double Overhead Sheave**

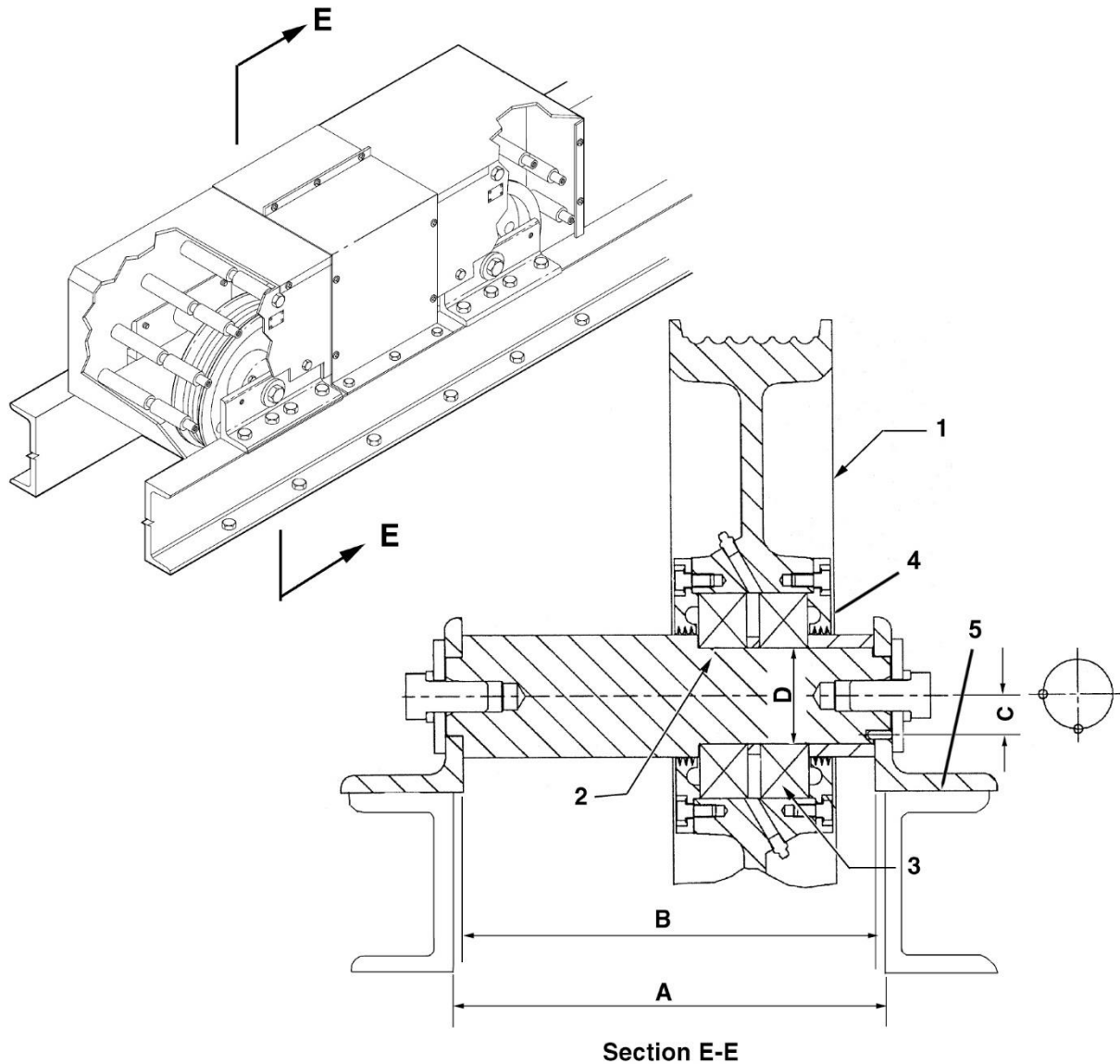


W/O VINTAGE

"A" (in.) BEAM SPACING	"B" (in.) BETWEEN ANGLES	SHEAVE Ø (in.)	SHAFT Ø "D" (in.)	NUMBER & ROPE Ø	REF. NO. 1	REF. NO. 2	REF. NO. 3	REF. NO. 4	REF. NO. 5	"C" (in.)	
					SHEAVE P/N	SHAFT P/N	BEARING P/N	COVER P/N	ANGLE P/N		
8.38	8.25	34	2.76	(4) 1/2 in.	A266AR37	A495AZ6	209J4	346PJ4	272AVG9	1.12	
				(5) 1/2 in.	A266AR20						
				(6) 1/2 in.	A266AR21						
				(7) 1/2 in.	A266AR41						
				(8) 1/2 in.	A266AR42						
				(4) 5/8 in.	A266AR43						
				(5) 5/8 in.	A266AR22						
		3.15	A266AR24	A495BA3	209J5	346PJ5	272AVG10	1.31			
		2.76	(6) 5/8 in.	A266AR23	A495AZ6	209J4	346PJ4	272AVG9	1.12		
		3.15		A266AR25	A495BA3	209J5	346PJ5	272AVG10	1.31		
		40	2.76	2.76	(4) 1/2 in.	A266AV30	A495AZ6	209J4	346PJ4	272AVG9	1.12
					(5) 1/2 in.	A266AV15					
					(6) 1/2 in.	A266AV16					
					(7) 1/2 in.	A266AV36					
(8) 1/2 in.	A266AV37										
(4) 5/8 in.	A266AV42				A495AZ21						
(5) 5/8 in.	A266AV17				A495AZ6						
3.15		A266AV19	A495BA3	209J5	346PJ5	272AVG10	1.31				
2.76	(6) 5/8 in.	A266AV18	A495AZ6	209J4	346PJ4	272AVG9	1.12				
3.15		A266AV20	A495BA3	209J5	346PJ5	272AVG10	1.31				

Sheaves, Bearings, and Shafts for Type AAA20700D Double Overhead Sheave

16-AAA20700C

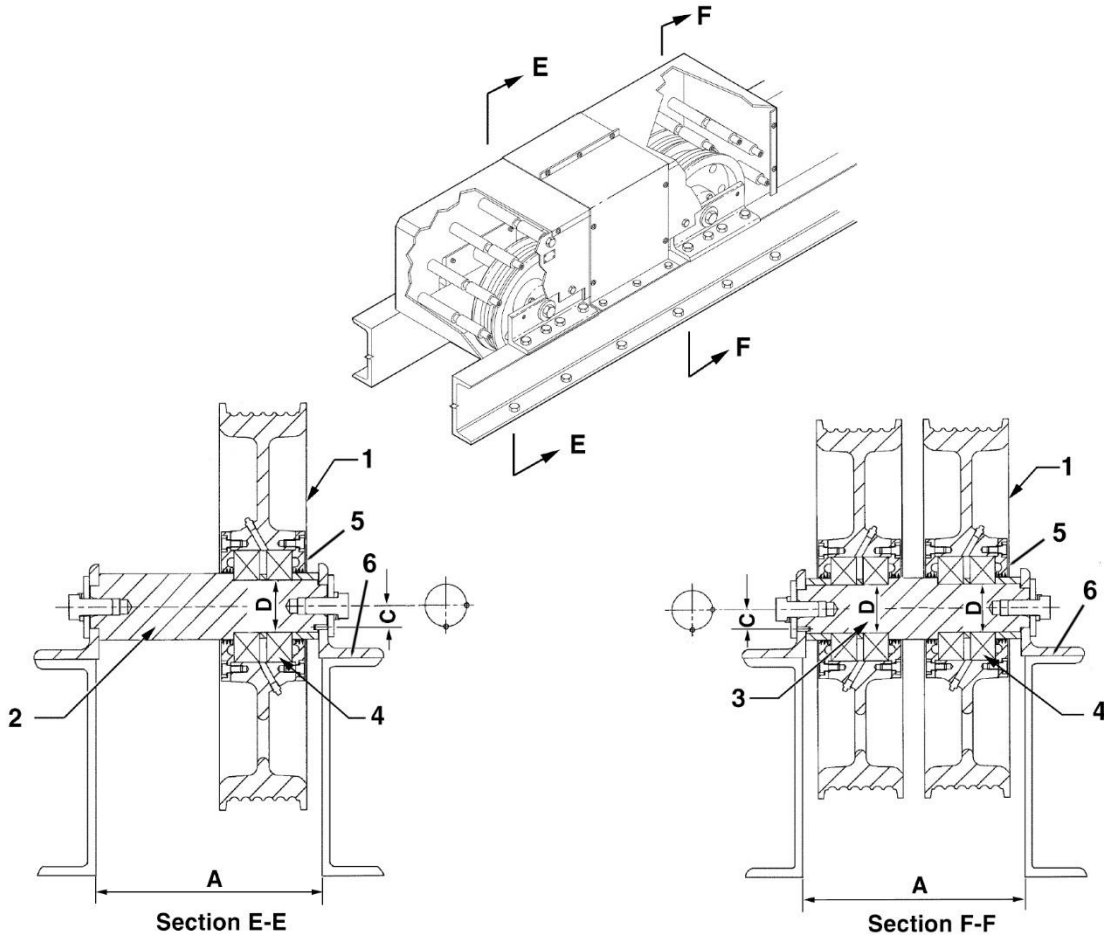


W/O VINTAGE

"A" (in.) (BEAM SPACING)	"B" (in.) (BETWEEN ANGLES)	SHEAVE ∅ (in.)	SHAFT ∅ "D" (in.)	NUMBER & ROPE ∅	REF. NO. 1	REF. NO. 2	REF. NO. 3	REF. NO. 4	REF. NO. 5	"C" (in.)
					SHEAVE P/N	SHAFT P/N	BEARING P/N	COVER P/N	ANGLE P/N	
12.00	11.88	20-1/2	2.76	(4) 1/2 in.	266BK1	A495BH1	209J4	346PJ4	272AVG9	1.12
				(5) 1/2 in.	266BK2					
				(6) 1/2 in.	266BK3					
		(4) 1/2 in.		A266AM22						
		(5) 1/2 in.		A266AM23						
		(6) 1/2 in.		266BL1						
		22								

16-AAA20700C

Sheaves, Bearings, and Shafts for Type AAA20700E Triple Overhead Sheave



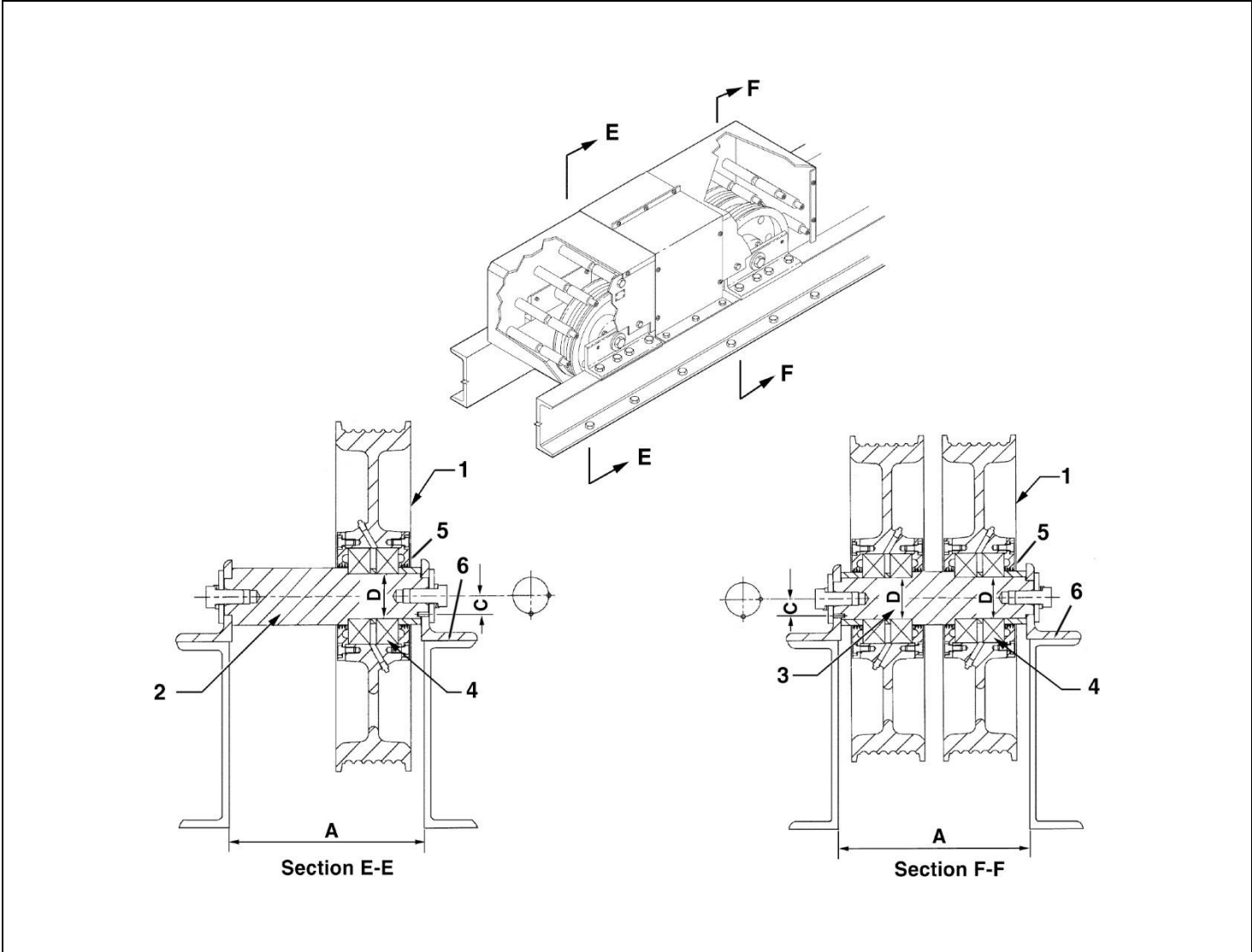
W/O VINTAGE

"A" (in.) (BEAM SPACING)	SHEAVE Ø (in.)	SHAFT Ø "D" (in.)	NUMBER & ROPE Ø	REF. NO. 1	REF. NO. 2	REF. NO. 3	REF. NO. 4	REF. NO. 5	REF. NO. 6	"C" (in.)
				SHEAVE P/N	SHAFT P/N	SHAFT P/N	BEARING P/N	COVER P/N	ANGLE P/N	
12.00	20-1/2	2.76	(3) 1/2 in.	266BK4	A495BG4	A495BH2	209J4	346PJ4	272AVG9	1.12
			(4) 1/2 in.	266BK1						
			(5) 1/2 in.	266BK2						
			(6) 1/2 in.	266BK3						
	22		(3) 1/2 in.	A266AM7	A495BG1	A495BH1				
			(4) 1/2 in.	A266AM18						
			(5) 1/2 in.	A266AM8						
			(6) 1/2 in.	A266AG9						
			(3) 1/2 in.	A266AN6						
			(4) 1/2 in.	A266AN15						
			(5) 1/2 in.	A266AN7						
	28		(6) 1/2 in.	A266AJ8						
			(4) 5/8 in.	A266AN26						
			(5) 5/8 in.	A266AJ9						
			(6) 5/8 in.	A266AJ10						

(Continued on Next Page)

Sheaves, Bearings, and Shafts for Type AAA20700E Triple Overhead Sheave

16-AAA20700C



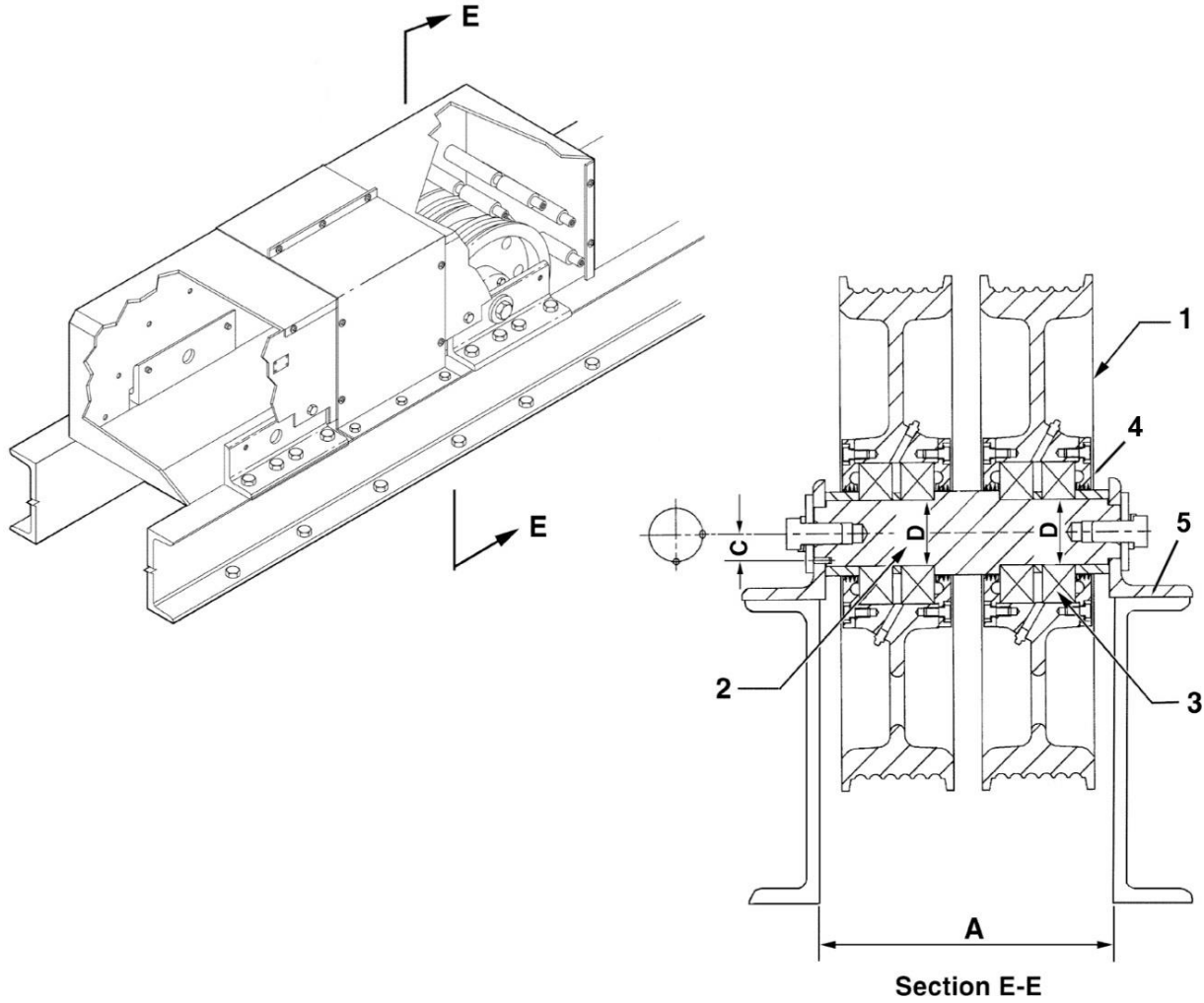
W/O VINTAGE

"A" (in.) BEAM SPACING	SHEAVE ∅ (in.)	SHAFT ∅ "D" (in.)	NUMBER & ROPE ∅	REF. NO. 1	REF. NO. 2	REF. NO. 3	REF. NO. 4	REF. NO. 5	REF. NO. 6	"C" (in.)	
				SHEAVE P/N	SHAFT P/N	SHAFT P/N	BEARING P/N	COVER P/N	ANGLE P/N		
12.00	34	2.76	(3) 1/2 in.	A266AR11	A495BG1	A495BH1	209J4	346PJ4	272AVG9	1.12	
			(4) 1/2 in.	A266AR35							
			(5) 1/2 in.	A266AR12							
			(6) 1/2 in.	A266AR13							
			(5) 5/8 in.	A266AR14							
			(6) 5/8 in.	A266AR15							
	40		40	(4) 1/2 in.							A266AV28
				(5) 1/2 in.							A266AV7
				(6) 1/2 in.							A266AV8
				(5) 5/8 in.							A266AV9
			(6) 5/8 in.	A266AV10							

(Continued on Next Page)

16-AAA20700C

Sheaves, Bearings, and Shafts for Type AAA20700E Overhead Sheave

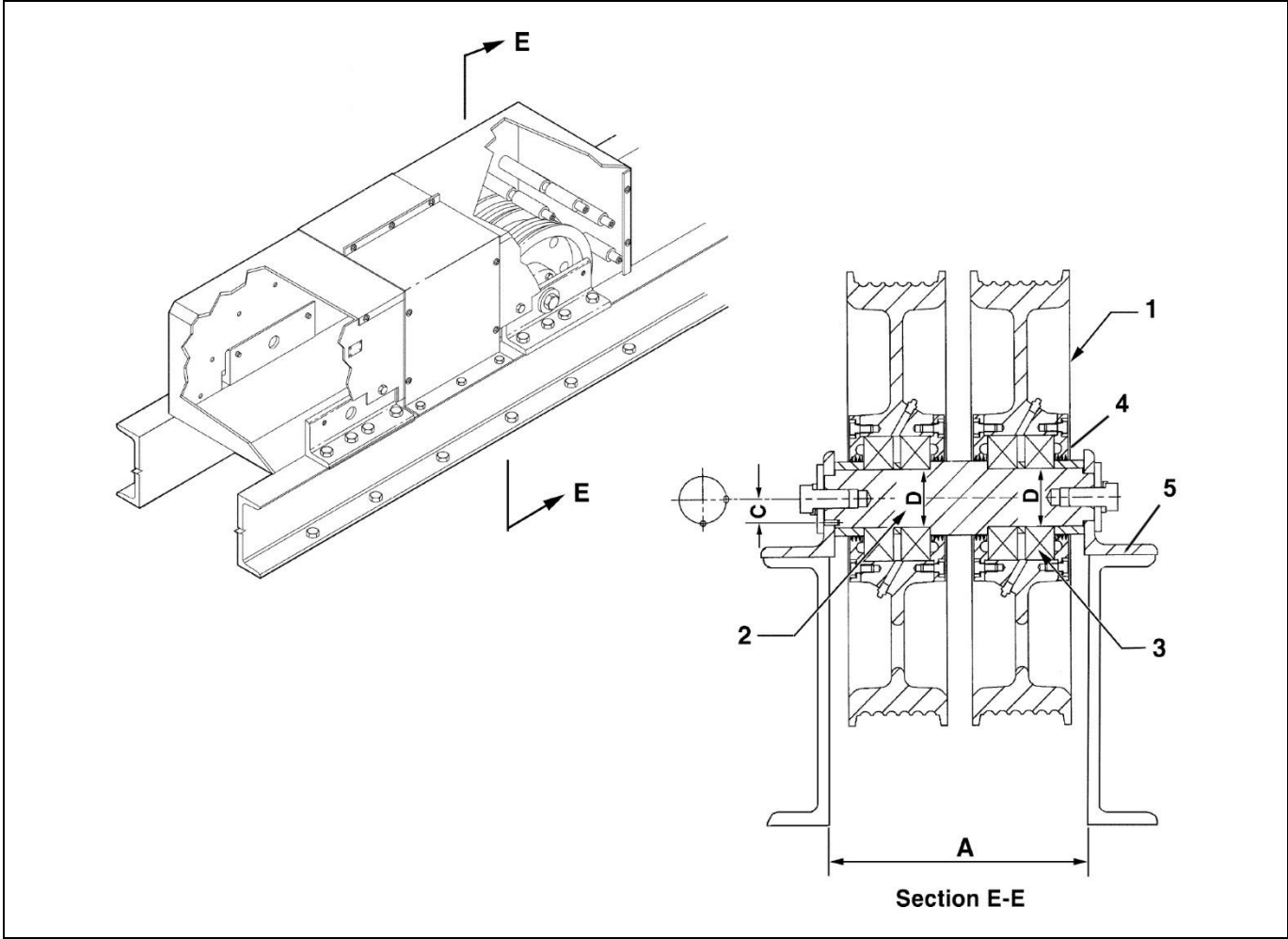


W/O VINTAGE

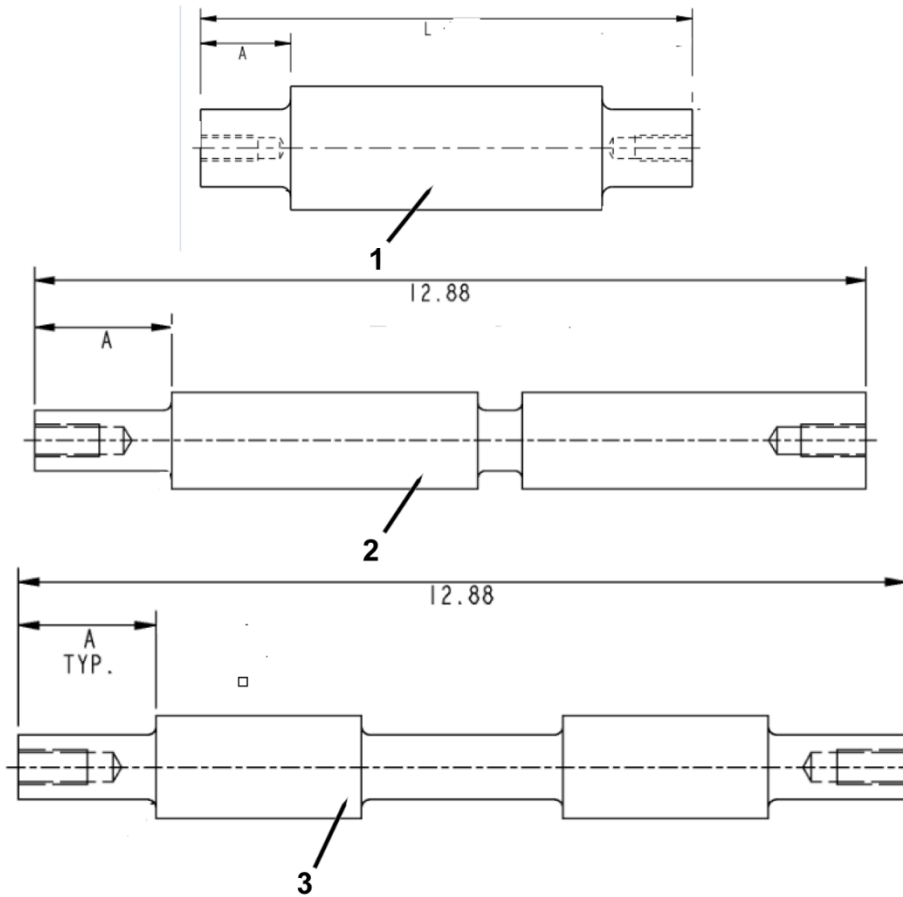
"A" (in.) BEAM SPACING	SHEAVE Ø (in.)	SHAFT Ø "D" (in.)	NUMBER & ROPE Ø	REF. NO. 1	REF. NO. 2	REF. NO. 3	REF. NO. 4	REF. NO. 5	"C" (in.)				
				SHEAVE P/N	SHAFT P/N	BEARING P/N	COVER P/N	ANGLE P/N					
12.00	22	3.15	(4) 1/2 in.	A266AM19	A495BG2	209J5	346PJ5	272AVG10	1.31				
		3.54	(4) 1/2 in.	A266AM21	A495BG3	209J6	346PJ6						
		3.15	(5) 1/2 in.	A266AM9	A495BG2	209J5	346PJ5						
		3.54	(5) 1/2 in.	A266AM11	A495BG3	209J6	346PJ6						
	28	22	3.15	(4) 1/2 in.	A266AN16	A495BG2	209J5			346PJ5			
			3.54	(4) 1/2 in.	A266AN17	A495BG3	209J6			346PJ6			
		28	22	3.15	(5) 1/2 in.	A266AN8	A495BG2			209J5	346PJ5		
				3.54	(5) 1/2 in.	A266AN9	A495BG3			209J6	346PJ6		
			28	22	3.15	(5) 5/8 in.	A266AJ12			A495BG2	209J5	346PJ5	
					3.54	(5) 5/8 in.	A266AJ19			A495BG3	209J6	346PJ6	
				28	22	3.15	(6) 5/8 in.			A266AJ13	A495BG2	209J5	346PJ5
						3.54	(6) 5/8 in.			A266AJ20	A495BG3	209J6	346PJ6

Sheaves, Bearings, and Shafts for Type AAA20700E Overhead Sheave

16-AAA20700C



W/O VINTAGE										
"A" (in.) BEAM SPACING	SHEAVE Ø (in.)	SHAFT Ø "D" (in.)	NUMBER & ROPE Ø	REF. NO. 1	REF. NO. 2	REF. NO. 3	REF. NO. 4	REF. NO 5	"C" (in.)	
				SHEAVE P/N	SHAFT P/N	BEARING P/N	COVER P/N	ANGLE P/N		
12.00	34	3.15	(4) 1/2 in.	A266AR36	A495BG2	209J5	346PJ5	272AVG10	1.31	
		3.54	(4) 1/2 in.	A266AR38	A495BG3	209J6	346PJ6			
		3.15	(5) 1/2 in.	A266AR16	A495BG2	209J5	346PJ5			
		3.54	(5) 1/2 in.	A266AR26	A495BG3	209J6	346PJ6			
		3.15	(5) 5/8 in.	A266AR18	A495BG2	209J5	346PJ5			
		3.54	(5) 5/8 in.	A266AR28	A495BG3	209J6	346PJ6			
	40	40	3.15	(6) 5/8 in.	A266AR19	A495BG2	209J5			346PJ5
			3.54	(6) 5.8 in.	A266AR29	A495BG3	209J6			346PJ6
			3.15	(4) 1/2 in.	A266AV29	A495BG2	209J5			346PJ5
			3.54	(4) 1/2 in.	A266AV31	A495BG3	209J6			346PJ6
			3.15	(5) 1/2 in.	A266AV11	A495BG2	209J5			346PJ5
			3.54	(5) 1/2 in.	A266AV21	A495BG3	209J6			346PJ6
			3.15	(5) 5/8 in.	A266AV13	A495BG2	209J5			346PJ5
			3.54	(5) 5/8 in.	A266AV23	A495BG3	209J6			346PJ6
			3.15	(6) 5/8 in.	A266AV14	A495BG2	209J5			346PJ5
			3.54	(6) 5/8 in.	A266AV24	A495BG3	209J6			346PJ6



W/O VINTAGE				
REF. No.	PART No.	DESCRIPTION	LENGTH (in.)	DIM A (in.)
1	384PX16	Retainer, Rope	9.25	3.06
	384PX17		9.25	2.38
	384PX19		9.25	2.00
	384PX22		9.5	2.50
	384PX51		9.25	2.70
	384PX52		9.50	2.10
	384PX66		7.00	1.88
	384PX67		7.00	1.19
2	AAA384ADW3	Retainer, Rope	12.88	1.65
	AAA384ADW4		12.88	1.97
	AAA384ADW5		12.88	1.19
	AAA384ADW6		12.88	1.31
3	AAA384ADY1	Retainer, Rope	12.88	1.65
	AAA384ADY2		12.88	1.97
	AAA384ADY3		12.88	1.19
	AAA384ADY4		12.88	1.31