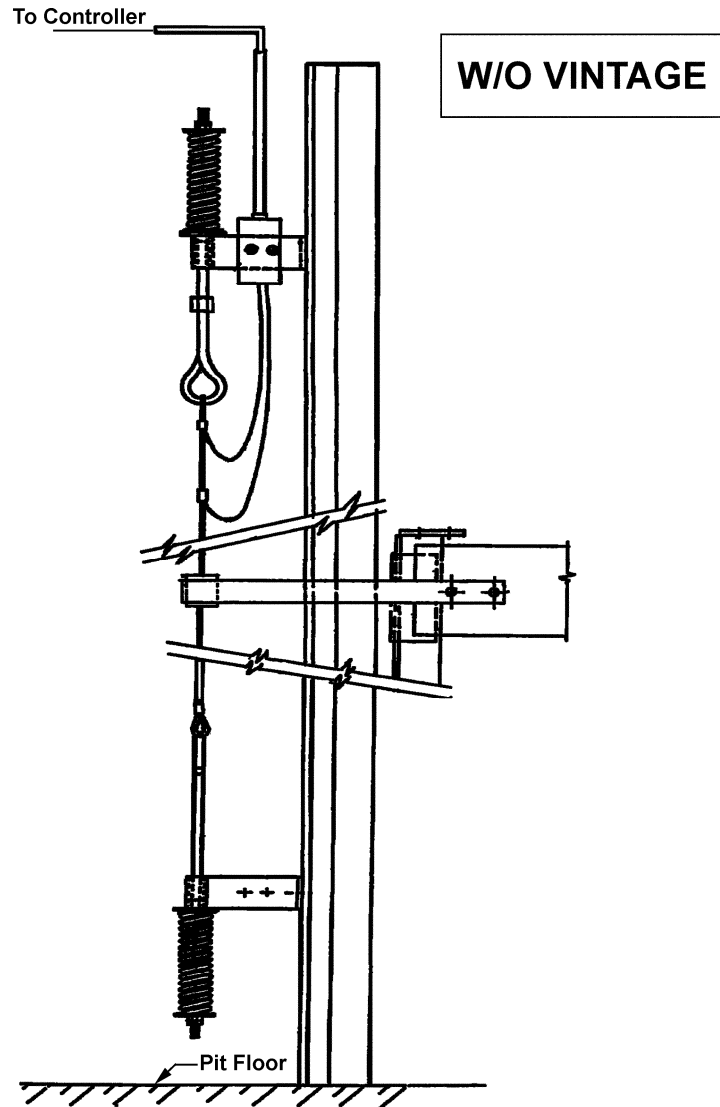


Counterweight Displacement Detector

Spare Parts Leaflet
16-AAA22000AAA

June 29, 2011 / Page 1 of 5



OTIS

Safety First!

SERVICE ENGINEERING
Otis Elevator Company
Bloomfield, Connecticut USA

Leaflet Description

This leaflet provides spare parts information for AAA22000AAA counterweight displacement detectors used on AAA6055DR counterweight assemblies.

Leaflet Revisions

Date Revised	Subject Matter Expert	Reason for Revision
June 30, 2005	Sean Mismas	New SPL
June 29, 2011	Gary Mendrala	Add counterweight displacement detector kits parts and instructions (pp. 4 and 5).

Related Drawings

Drawing No.	Title	Drawing No.	Title
AAA22000AAA	Arrangement & Assembly: CWT Displacement Detector	---	---
---	---	---	---

Related Documents

Document ID	Title
SPL 16-AAA6055DR	Counterweight Assembly, 6" Uprights
---	---

Subject Matter Expert

Name	Department
Sean Mismas	OSC Service Engineering

About Spare Parts Leaflets...

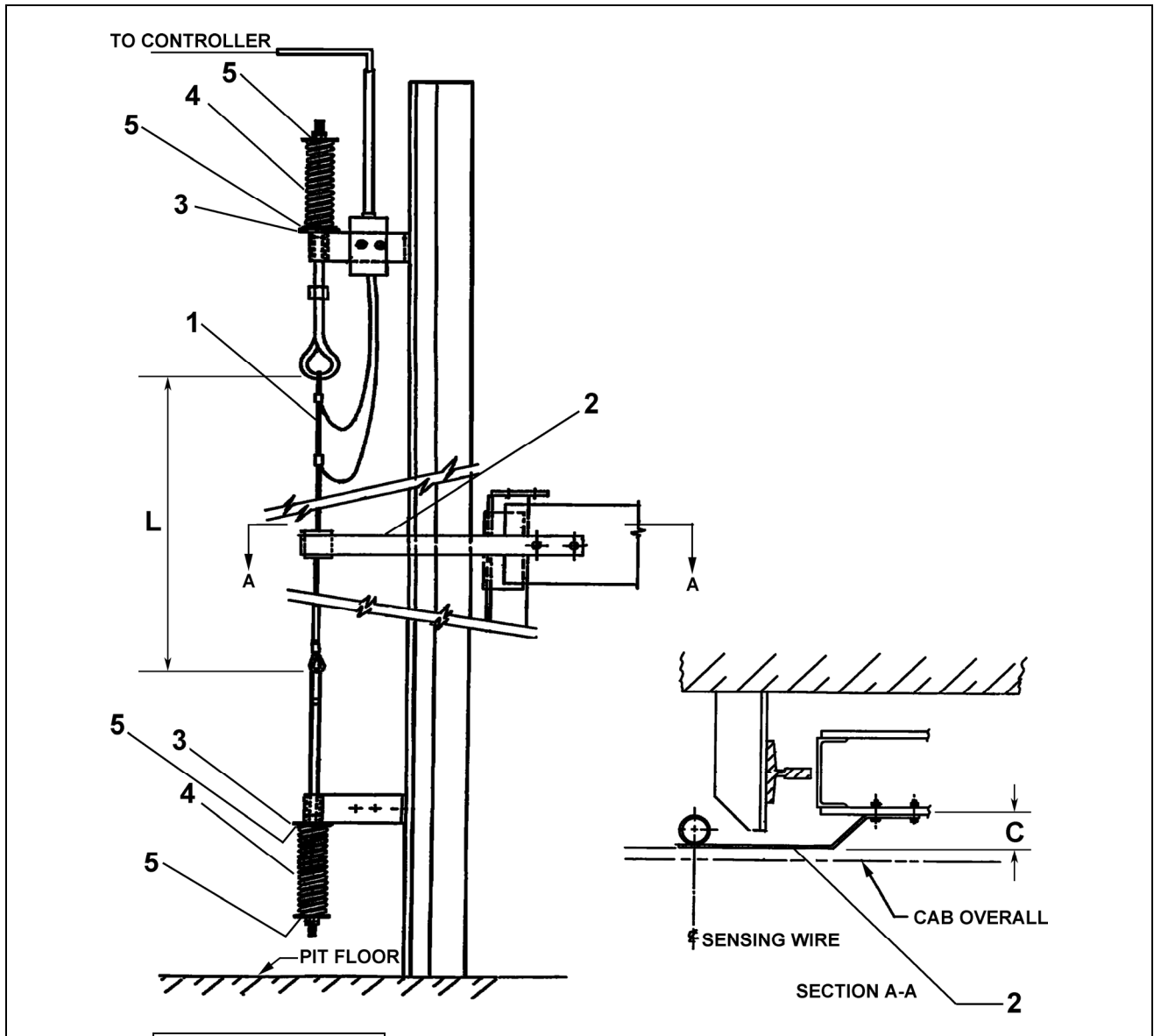
This document lists the lowest replaceable units (LRUs) for the standard version of the product. The LRUs are chosen by a team of Otis associates representing engineering and manufacturing.

While goal of this document is to make parts identification as easy as possible, the document cannot be all-inclusive. Elevator and escalator contracts classified as "special" or "custom" are not addressed here. For such contracts, please refer to specified information, the contract folder, TIPs, Field Education Articles, Construction Letters, etc. for further information.

If you have any suggestions about this document, please contact the subject matter expert listed on this page.

Counterweight Displacement Detector

16-AAA22000AAA



W/O VINTAGE		
REF. No.	PART No.	DESCRIPTION
1	AAA00174AAD999	Assembly, Sensing Wire (brown), L = Rise + Pit + Overhead (in.), Order to Finished Length (L), NOTE
2	AAA00316FBM001	Bracket, Detector, Offset C = 2.12 in.
	AAA00316FBM999	Bracket, Detector, Order to Offset Dimension (C), NOTE
3	AAA00334AAB001	Bushing, Insulating
4	90BN1	Spring
5	133E20	Washer, Spring Seat

NOTE: This is not a stock item. It must be manufactured per contract conditions.

Counterweight Displacement Detector Kits

Ordering a Counterweight Displacement Detector Kit

Some counterweight displacement detectors are contract specified parts. To select a replacement kit, fill in the worksheet to determine the present equipment measurements and to enter the guide rail size. When completed fax the worksheet to the OSC Customer Service at (860) 286-1605.

Worksheet

Counterweight Displacement Detector Assembly Part Number	Rail Size See Fig. 1)	Sensing Wire Length (in.) L = Length L=Pit+Rise+Overhead	Dim A (in.)	1/2 CWT. Width (in.)	Dim C (in.) C=A+1.06-1/2 CWT. Width
			See Figure 2		
AAA22000AAA1	#1		---	---	2.12
AAA22000AAA2	#1-1/2		---	---	2.12
AAA22000AAA3	#2		---	---	2.12
AAA22000AAA997	#1				
AAA22000AAA998	#1-1/2				
AAA22000AAA999	#2				

Rail Size Chart

Rail Designation	Weight (lb./ft.)	Height (in.)	Width (in.)	Thickness (in.)	C (in.)
# 2	8	2-7/16 (62 mm)	3-1/2 (89 mm)	5/8 (16 mm)	5/16 (8 mm)
# 1-1/2	12	3-1/2 (89 mm)	5 (127 mm)	5/8 (16 mm)	5/16 (8 mm)
# 1	15	3-1/2 (89 mm)	5 (127 mm)	5/8 (16 mm)	1/2 (13 mm)
# 3/4	18.5	4-1/4 (108 mm)	5-1/2 (140 mm)	3/4 (19 mm)	1/2 (13 mm)
# 1/2	22.5	4-3/64 (103 mm)	5-1/2 (140 mm)	1-1/8 (29 mm)	36/64 (14 mm)
OA	30	5 (127 mm)	5-1/2 (140 mm)	1-1/4 (32 mm)	11/16 (17,5 mm)

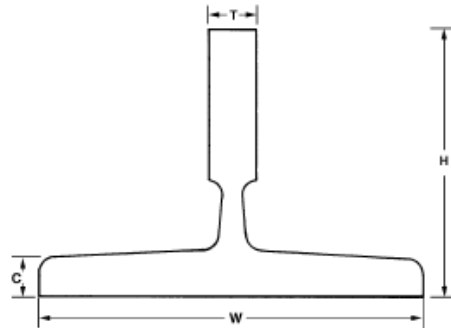
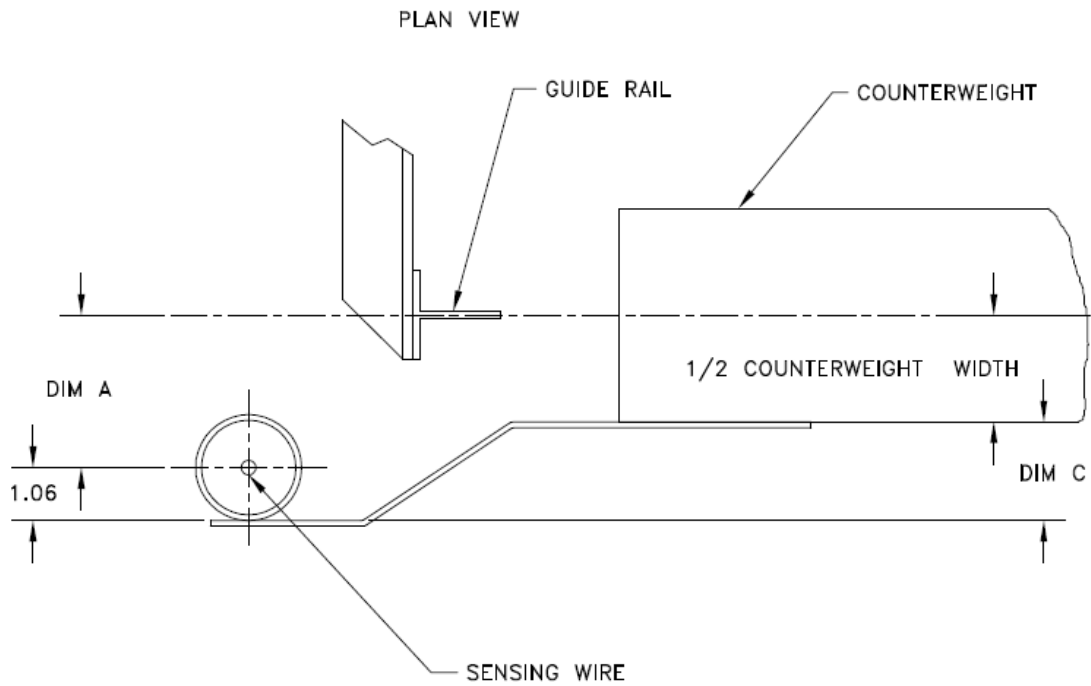


Figure 1: Guide Rail Sizes

Counterweight Displacement Detector Kits

16-AAA22000AAA



CALCULATE DIMENSION "C"
 $C = A + 1.06 - 1/2 \text{ COUNTERWEIGHT WIDTH}$
NOTE: ALL DIMENSIONS ARE IN INCHES

Figure 2: Plan View of Counterweight