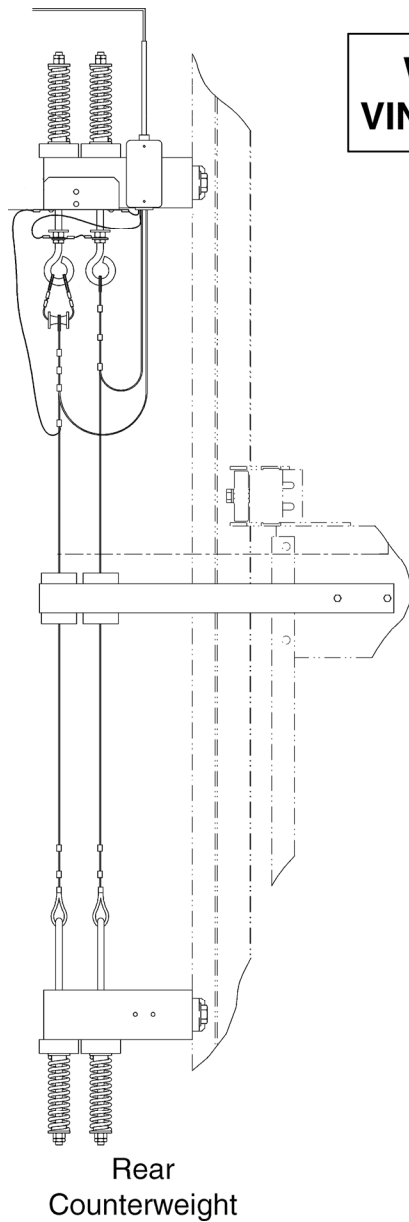


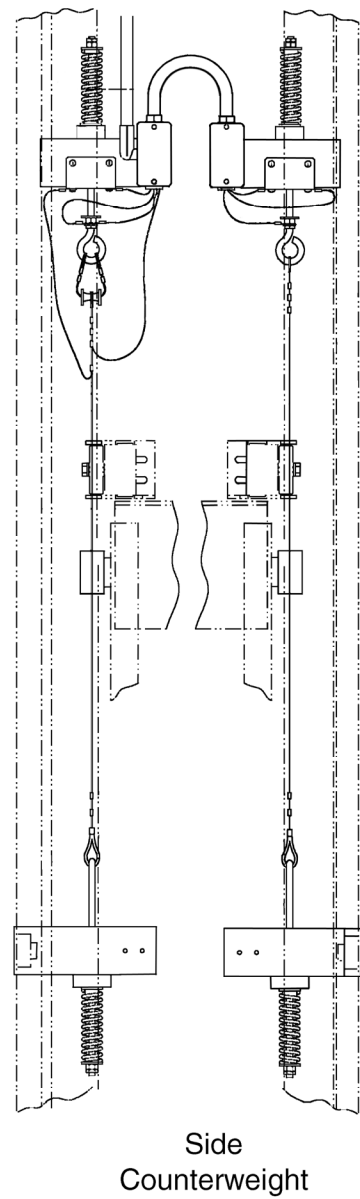
Gen2[®] Counterweight Displacement Detector

Spare Parts Leaflet 16-AAA22000AAD

August 1, 2012 / Page 1 of 4



W/O
VINTAGE



OTIS

Safety First!

SERVICE ENGINEERING
Otis Elevator Company
Bloomfield, Connecticut USA

Leaflet Description

This SPL lists the lowest replaceable parts for a counterweight displacement detector for the Gen2® elevator system.

Leaflet Revisions

Date Revised	Subject Matter Expert	Reason for Revision
August 13, 2003	Wendy Smerk	New Leaflet
July 10, 2004	Wendy Smerk	Changed title; minor changes on History page.
July 25, 2009	Gary Mendrala	Updated wires and insulators.
August 1, 2012	Gary Mendrala	Updated length calculations and units for ref. 2 on p. 3; Added NOTE on p. 3

Related Drawings

Drawing No.	Title	Drawing No.	Title
AAA22000AAD	Assembly and Arrangement Cwt Displacement Detector Gen2R2 ED	ABA25700G	Counterweight
AAA29508B	Hoistway Material Gen2 ED	---	---

Related Documents

Document ID	Title
SPL 16-AAA22000AAA	Counterweight Displacement Detector
SPL 16-AAA22000AAC	Counterweight Displacement Detector (Gen2 R2 Limited Duty)
SPL 16-AAA22000AAF	Counterweight Displacement Detector (Gen2 R2 Extended Duty)
SPL 16-AAA22000AAH	Counterweight Displacement Detector (Gen2 Low Rise)
SPL 16-AAA22000AAJ	Counterweight Displacement Detector (high sway buildings)

Subject Matter Expert

Name	Department
Gary Mendrala	OSC Service Engineering

About Spare Parts Leaflets...

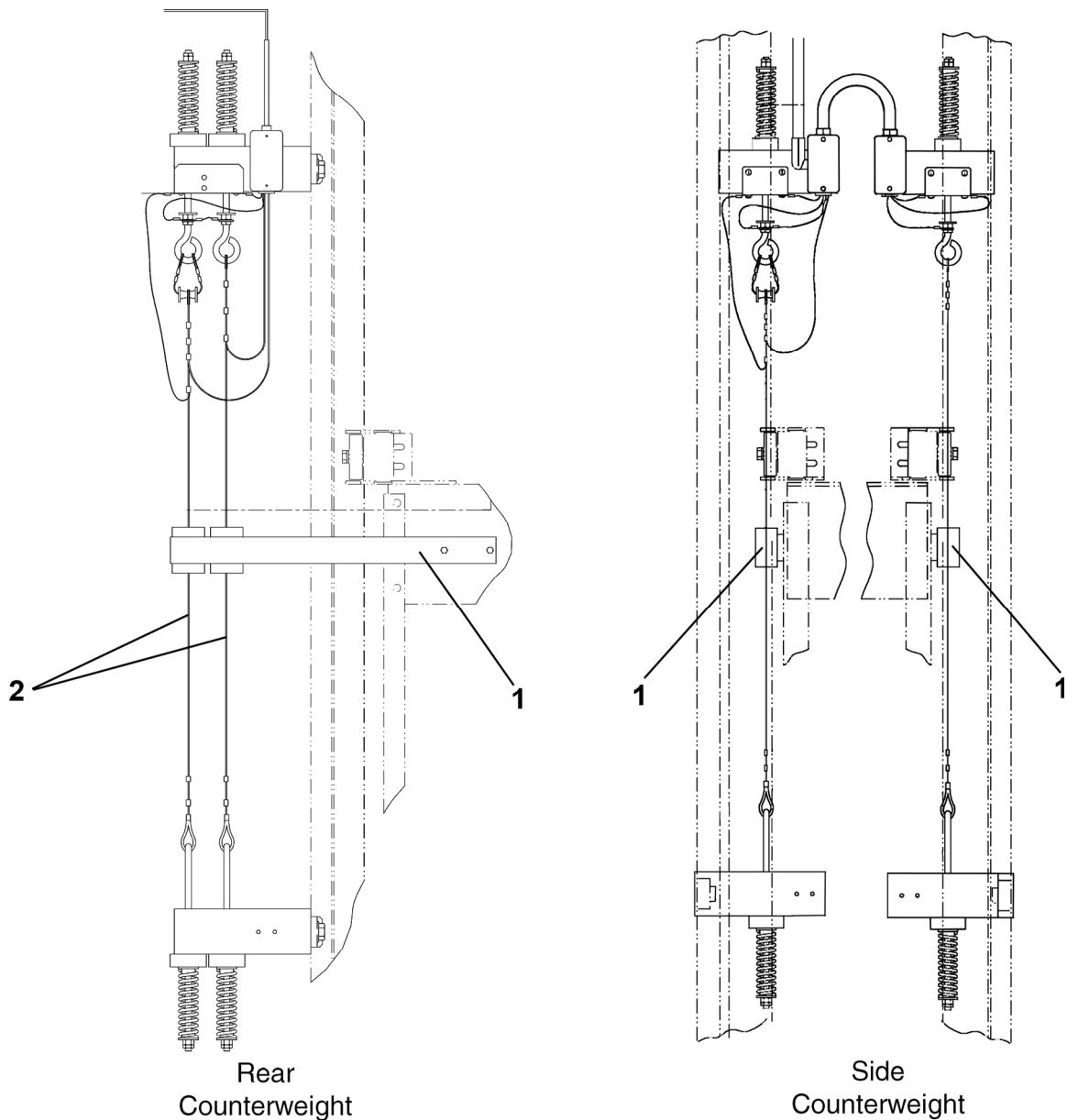
This document lists the lowest replaceable units (LRUs) for the standard version of the product. The LRUs are chosen by a team of Otis associates representing engineering and manufacturing.

While goal of this document is to make parts identification as easy as possible, the document cannot be all-inclusive. Elevator and escalator contracts classified as “special” or “custom” are not addressed here. For such contracts, please refer to specified information, the contract folder, TIPs, Field Education Articles, Construction Letters, etc. for further information.

If you have any suggestions about this document, please contact the subject matter expert listed on this page.

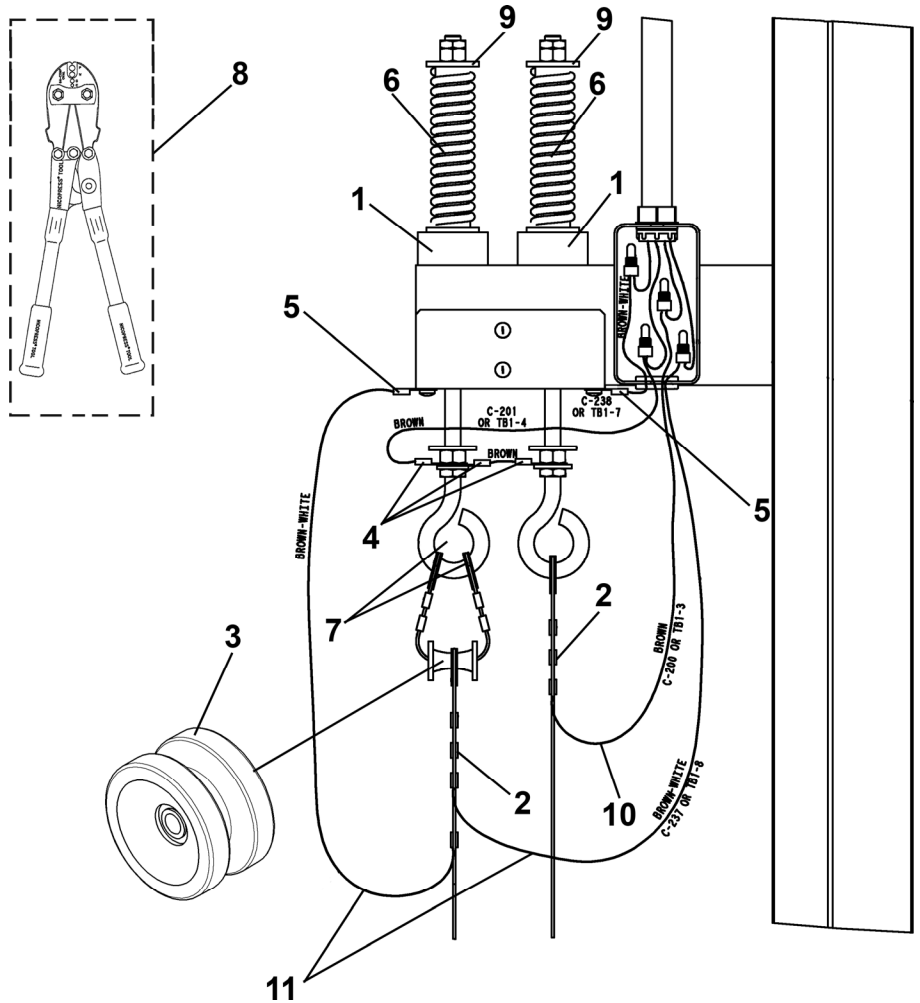
Wire Rope & Detector Bracket

16-AAA22000AAD



W/O VINTAGE		
REF. No.	PART No.	DESCRIPTION
1	AAA316GSZ5	Bracket, Detector, for Side Counterweight
	AAA316GSZ10	Bracket, Detector, for Rear Counterweight
2	AAA00174AAD999	Rope, Wire, L = Pit + Rise +Overhead; Order to Finished Length (L) inches NOTE

NOTE: Not a stock item. Must be manufactured per contract conditions.



W/O VINTAGE		
REF. No.	PART No.	DESCRIPTION
1	AAA00334AAB001	Bushing, Insulation
2	336GF2	Clamp
3	AAA129DM11	Insulator
4	AAA190CA42	Lug, Large Ring Terminal
5	AAA190CA28	Lug, Small Ring Terminal
6	90BN1	Spring
7	AAA00229AAA001	Thimble, Wire Rope
8	MT-105070	Tool, Compression Sleeve Crimp
9	133E20	Washer, Spring Seat
10	174DD15	Wire, No. 18, Brown, L = 24 in.
11	174DD16	Wire, No. 18, Brown/White, L = 24 in.