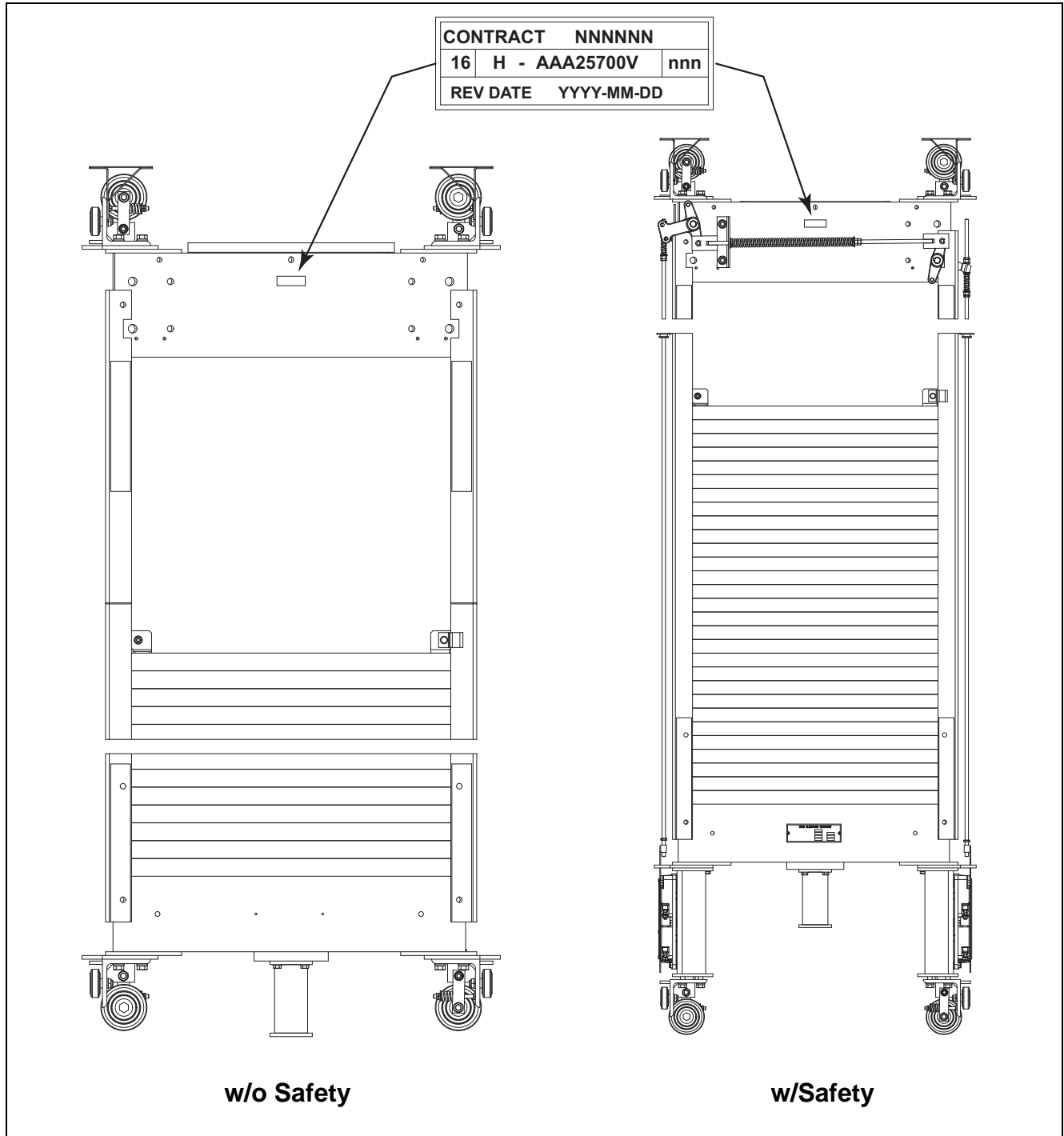


Gen2[®] Counterweight Assembly

Spare Parts Leaflet

16-AAA25700V

August 17, 2011 / Page 1 of 6



w/o Safety

w/Safety

Unpublished Work—© Otis Elevator Co.; 2011

OTIS

Safety First!

SERVICE ENGINEERING
 Otis Elevator Company
 Bloomfield, Connecticut USA

Leaflet Description

This leaflet provides information for replacement components for the Gen2® counterweight assembly. These counterweights are available with and without safeties. The counterweight is designed to be used with up to 5, 64 kn belts. The assembly is compensation chain compatible. The assembly is compatible with a hoistway distance-between-guides (DBG) value of 1025 mm.

Leaflet Revisions

Date Revised	Subject Matter Expert	Reason for Revision
August 17, 2011	Gary Mendrala	New SPL

Related Drawings

Drawing No.	Title	Drawing No.	Title
AAA25700V	Gen2 Counterweight Assembly	ABA25700T	Counterweight Frame Assembly
AAA307BL	Lever	AAA20780W	Sheave Assembly
AAA346BBL	Sheave Cover, Bottom	KAA25830AAA	Roller Guide Kit
AAA346BBJ	Sheave Cover, Top	AAA194BM	Key, Shaft
AAA29000AJ	Gen2® NSAA System		

Related Documents

Document ID	Title
SPL 14-A9672D	Progressive Safety
SPL 14-KAA25830AAA	Roller Guide
SPL 16-FAA25700BX	Gen2® 953 kg., 1134 kg Duty Counterweight
SPL 16-AAA25700G	Gen2® counterweight 2:1 Roping
SPL 16-AAA25700S	Gen2® L-Series Counterweight
Order Form AAA29000AJ_SS12	Counterweight Specified Order Form

Subject Matter Expert

Name	Department
Gary Mendrala	Service Engineering

About Spare Parts Leaflets...

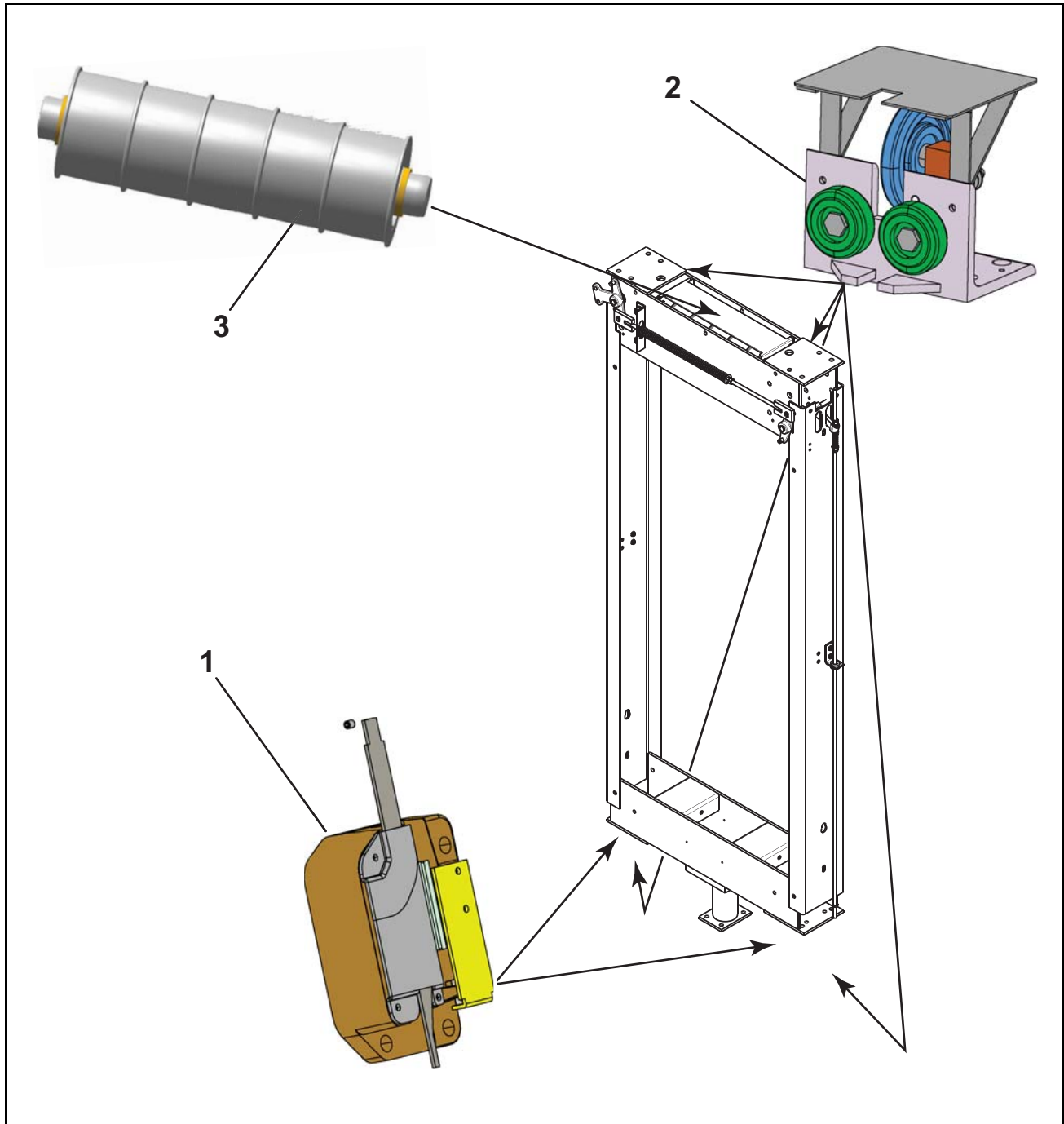
This document lists the lowest replaceable units (LRUs) for the standard version of the product. The LRUs are chosen by a team of Otis associates representing engineering and manufacturing.



While goal of this document is to make parts identification as easy as possible, the document cannot be all-inclusive. Elevator and escalator contracts classified as “special” or “custom” are not addressed here. For such contracts, please refer to specified information, the contract folder, TIPS, Field Education Articles, Construction Letters, etc. for further information.

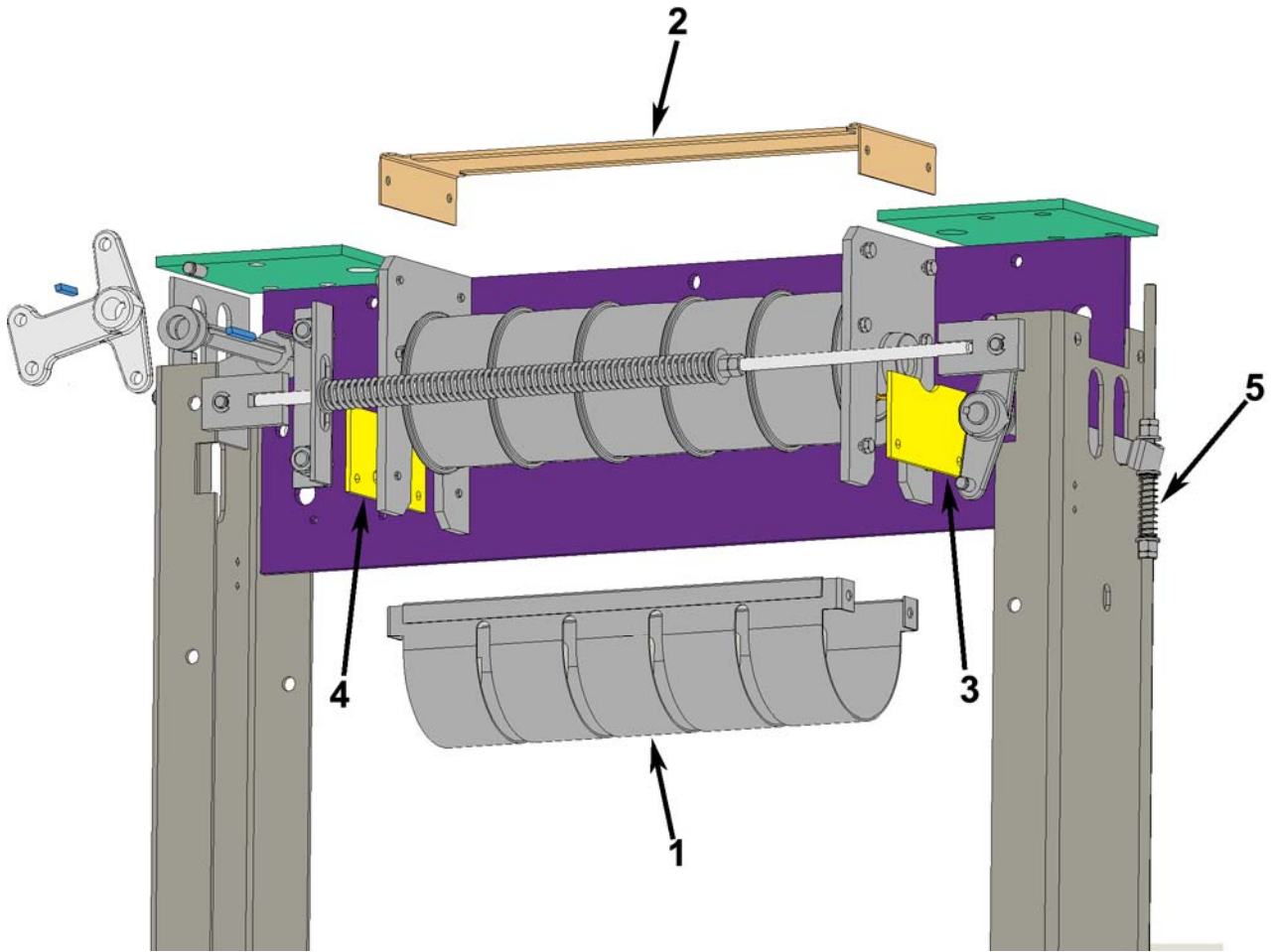
If you have any suggestions about this document, please contact the subject matter expert listed on this page.

Gen2 Counterweight Assembly

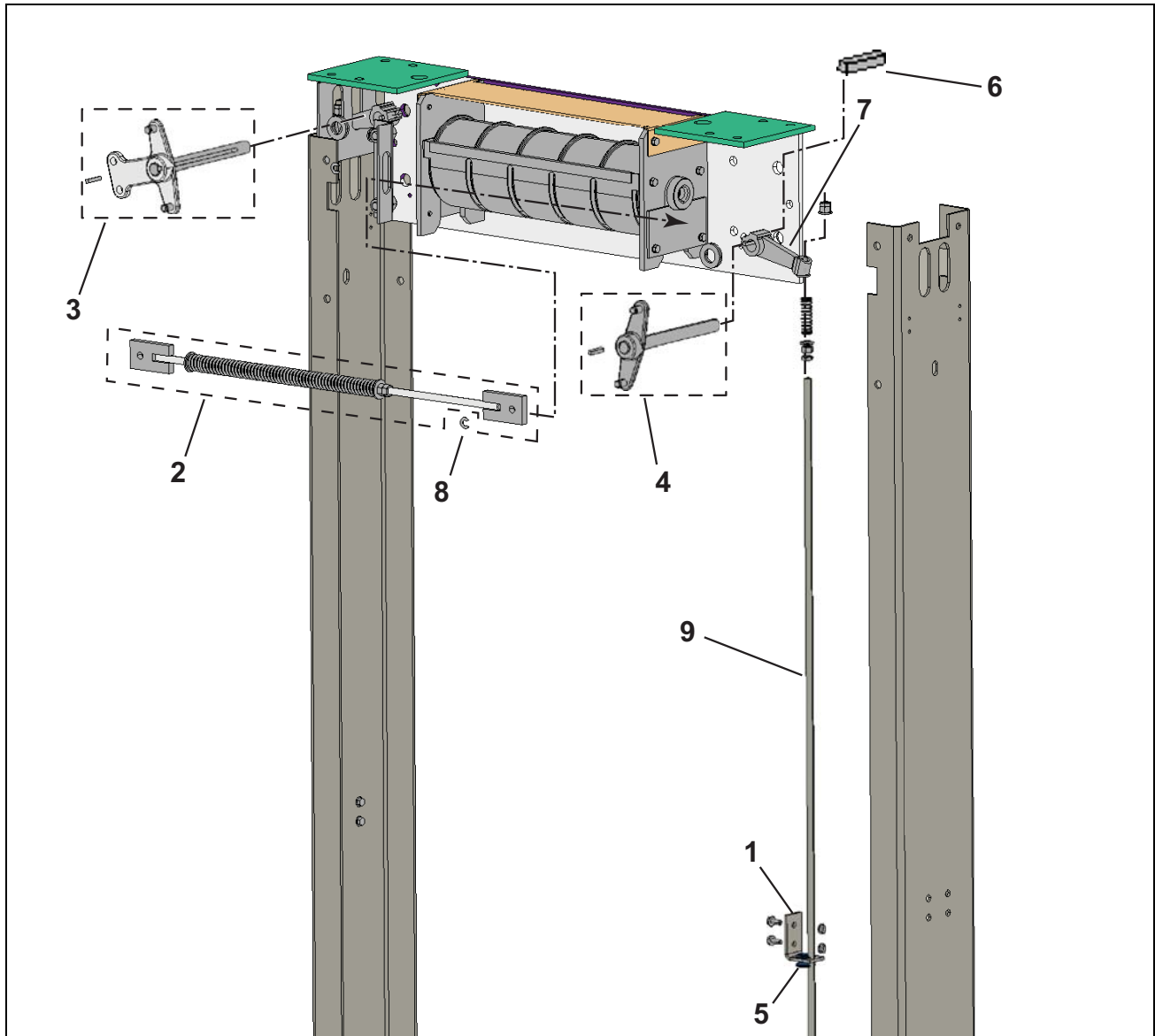
16-AAA25700V




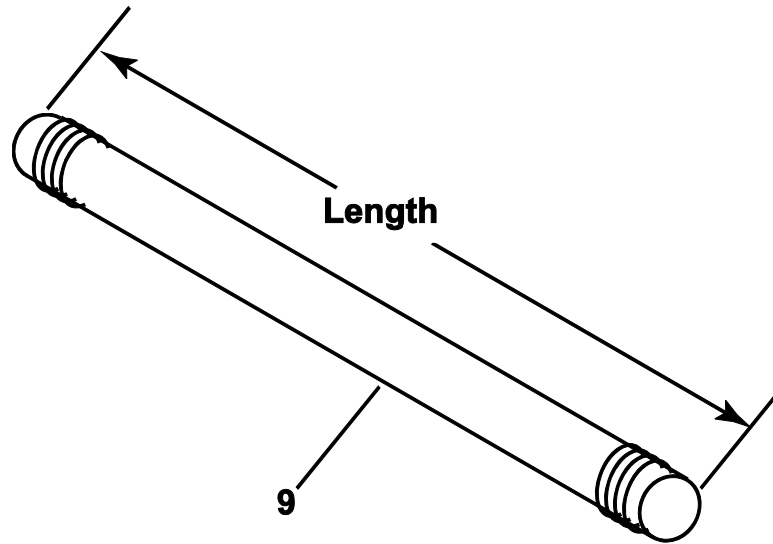
REF. No.	PART No.	DESCRIPTION
1	---	Counterweight Safety  SPL 14-A9672D
2	---	Roller Guide  SPL 14-KAA25830AAA
3	AAA20780W4	Sheave Assembly
---	AAA349C1	Anti-Fretting Compound (used on sheave shaft, NOT SHOWN)



REF. No.	PART No.	DESCRIPTION
1	ABA346BBL4	Cover, Bottom
2	AAA346BBJ2	Cover, Top
3	AAA194BM2	Key, Sheave (with radial slot)
4	AAA194BM1	Key, Sheave (without radial slot)
5	90JB10	Spring



REF. No.	PART No.	DESCRIPTION
1	AAA283AUC1	Angle
2	AAA98FS3	Assembly, Connecting Rod (includes: rod, plates, spring, nuts)
3	AAA307BL5	Assembly, Lever
4	AAA307BL6	Assembly, Lever
5	334H26	Bushing, Insulating
6	192E25	Key
7	288AK4	Lever
8	172DR2	Retaining Ring (enlarged for clarity)
9	 p. 6	Rod, Lift



REF. No.	PART No.	DESCRIPTION	LENGTH (IN.)	CWT. LOAD on SAFETY
	AAA25700V			
9	AAA96AAA34	Lift Rod	90.43	>5904 lbs.
	AAA96AAA35		95.15	
	AAA96AAA36		102.24	
	AAA96AAA37		112.67	
	AAA96AAA38		128.03	
	AAA96AAA39		146.92	
	AAA96AAA40		91.14	≤5904 lbs.
	AAA96AAA41		95.86	
	AAA96AAA42		102.95	
	AAA96AAA43		113.38	
	AAA96AAA44		128.74	
	AAA96AAA45		147.63	