

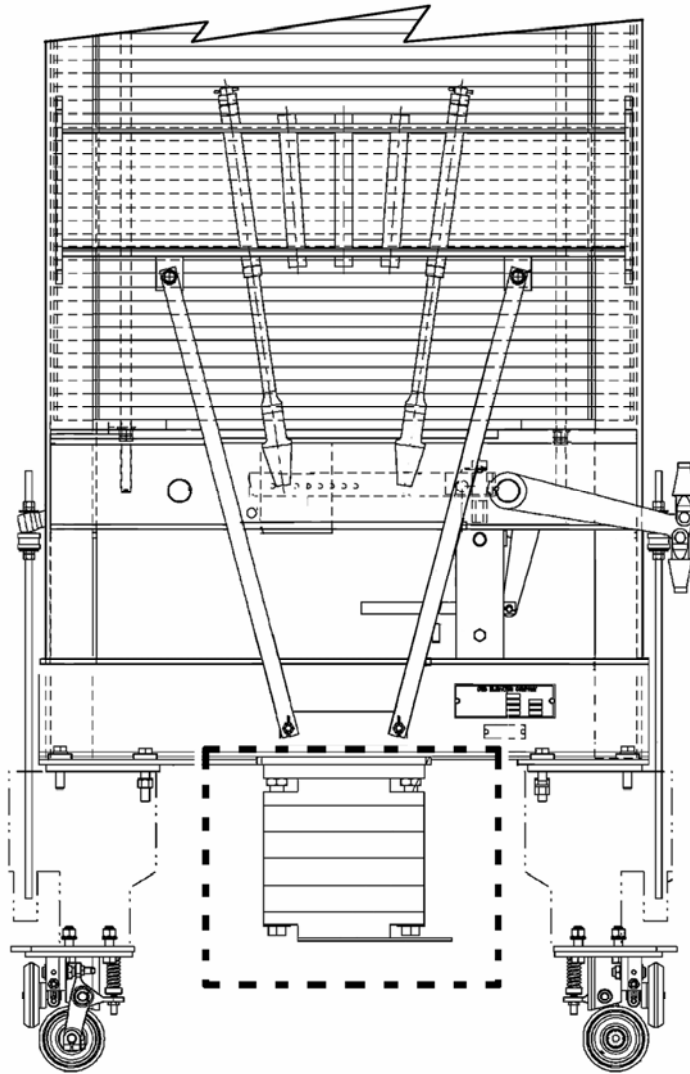
Counterweight:  
Wood Blocking Assembly

Spare Parts Leaflet

16-AAA25800H

January 30, 2007 / Page 1 of 3

**W/O  
VINTAGE**



Unpublished Work—© Otis Elevator Co.; 2007

**OTIS**

Safety First!

SERVICE ENGINEERING  
Otis Elevator Company  
Bloomfield, Connecticut USA

## Leaflet Description

The AAA25800H drawing titled "Assembly - Wood Blocking" is dated 2000-02-01. Although there is no vintage associated with it, the wood blocking has been used for over half a century. Part numbers 310DH2 and 310DF2 have been used on multiple counterweight arrangements since 1959. Please verify wood blocking dimensions before placing orders for these parts, if they are not specifically called out for your particular counterweight arrangement.

## Leaflet Revisions

Date Revised	Subject Matter Expert	Reason for Revision
June 2, 2005	Sean Mismas	New SPL
January 30, 2007	Sean Mismas	Corrected reference numbering on p. 3

## Related Drawings

Drawing No.	Title	Drawing No.	Title
AAA25800H	Assembly: Wood Blocking		

## Related Documents

Document ID	Title
SPL 16-AAA6055DA	Counterweight, 7" Uprights, with or without Tie-Down Compensation, 13,500 lb. Max.
SPL 16-AAA6055DE	Counterweight, 7" Uprights, with Tie-Down Compensation and Inertia Release Device, 13,500 lb. Max.
SPL 16-AAA6055CP	Counterweight, 7" Uprights, with Tie-Down Compensation, 14,300–16,000 lb.

## Subject Matter Expert

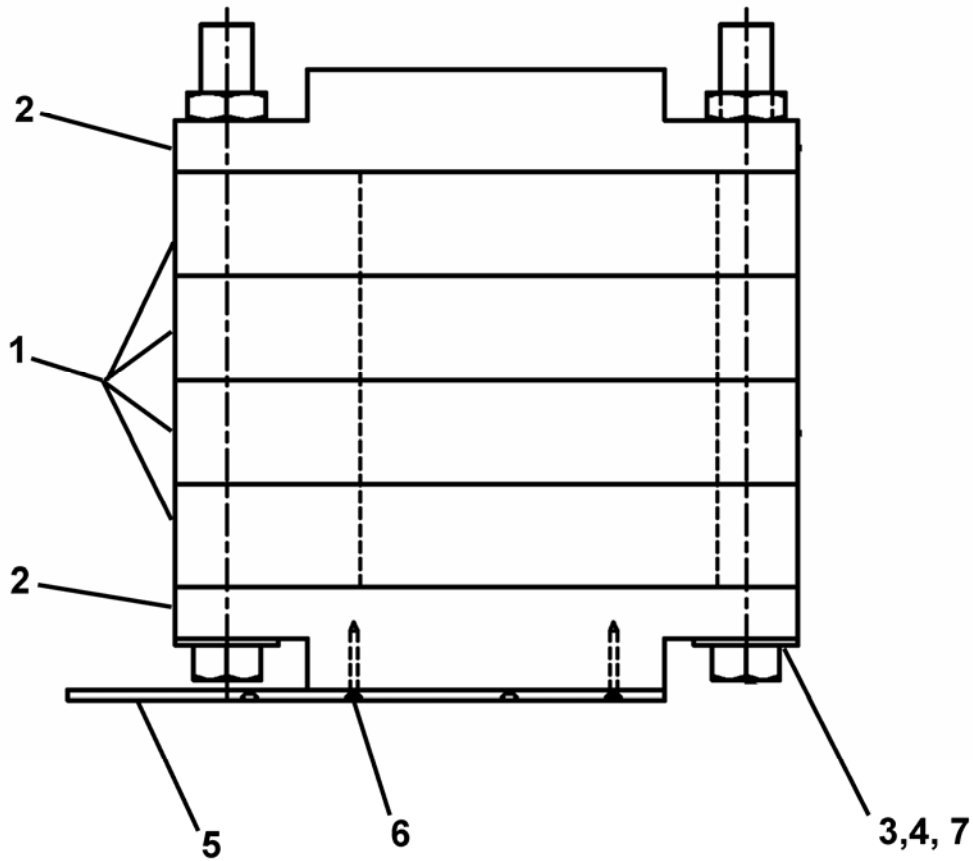
Name	Department
Sean Mismas	Service Engineering

## About Spare Parts Leaflets...

This document lists the lowest replaceable units (LRUs) for the standard version of the product. The LRUs are chosen by a team of Otis associates representing engineering and manufacturing.

While goal of this document is to make parts identification as easy as possible, the document cannot be all-inclusive. Elevator and escalator contracts classified as "special" or "custom" are not addressed here. For such contracts, please refer to specified information, the contract folder, TIPs, Field Education Articles, Construction Letters, etc. for further information.

If you have any suggestions about this document, please contact the subject matter expert listed on this page.



REF. No.	W/O VINTAGE PART No.	DESCRIPTION
1	310DF2	Blocking, Wood (with mounting channels)
2	310DH2	Blocking, Wood (with mounting holes)
3	58XA201	Bolt, 1.0 in. Hex Head (special), 12.0 in. L with 10.0 in. Thread Length
4	---	Nut, Jam, Hex Head
5	AAA386LGH2	Plate
6	---	Screw, Tapping, Type AB Flat Head Phillips, #8 x 1-1/2 in. L
7	---	Washer, Flat