

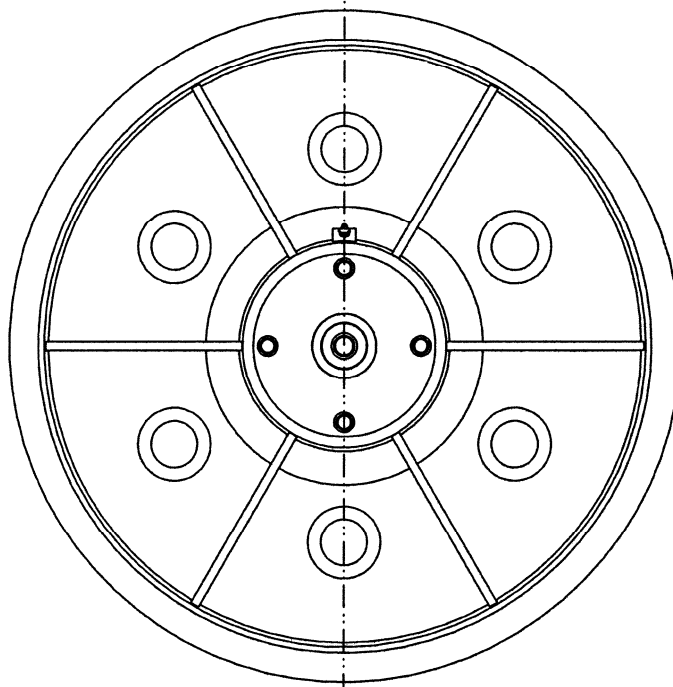
2:1 Counterweight  
(CWT) Sheave  
Assembly

Spare Parts Leaflet

16-AAA25870G

June 27, 2018 / Page 1 of 8

W/O VINTAGE



**OTIS**

This document does not contain any  
technical data subject to EAR or ITAR

SERVICE ENGINEERING  
Otis Elevator Company  
Bloomfield, Connecticut USA

Unpublished Work—© Otis Elevator Co.; 2018

## Leaflet Description

The AAA25870G drawing titled "Assembly: 2:1 Counterweight Sheave" is dated 200-02-01 and does not have a vintage associated with it. However, this leaflet provides for type AAA25870G counterweight sheave assemblies installed on AAA6055CE counterweights used on MVS and HVS system machines.

## Leaflet Revisions

Date Revised	Subject Matter Expert	Reason for Revision
October 15, 2005	Sean Mismas	New SPL
October 1, 2008	Val Sheynkman	Corrected errors on p. 8
June 27, 2018	Gary Mendrala	Corrected p/n A266AM8 description on p. 4; Updated document template

## Related Drawings

Drawing No.	Title	Drawing No.	Title
AAA25870G	Assembly; 2:1 Counterweight Sheave	---	---

## Related Documents

Document ID	Title
SPL 16-AAA20700C	Overhead Sheave Assemblies
SPL 16-A6612J	2:1 Sheaves: Common Hub Components

## Subject Matter Expert

Name	Department
Gary Mendrala	OSC Service Engineering

## About Spare Parts Leaflets...

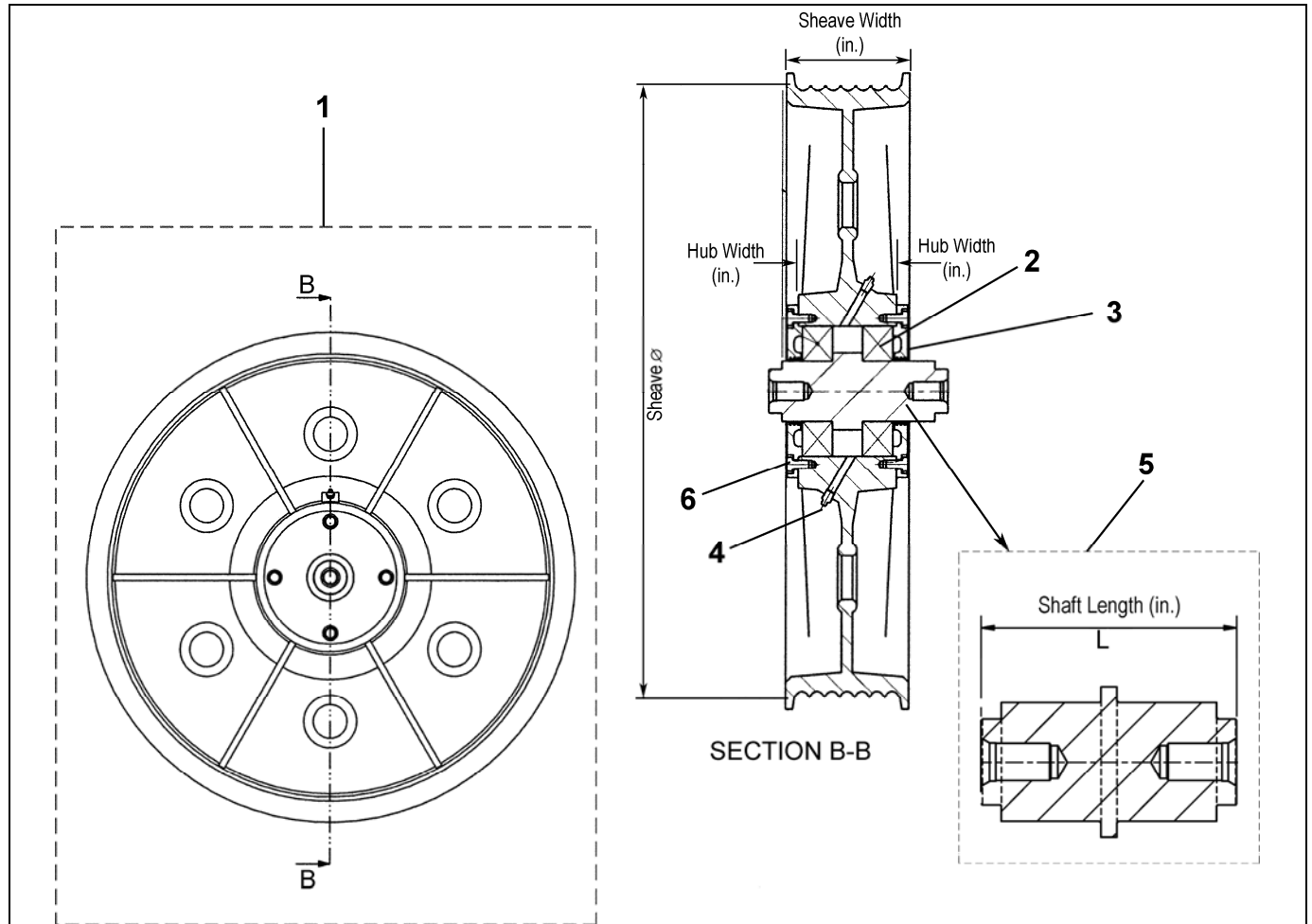
This document lists the lowest replaceable units (LRUs) for the standard version of the product. The LRUs are chosen by a team of Otis associates representing engineering and manufacturing.

While goal of this document is to make parts identification as easy as possible, the document cannot be all-inclusive. Elevator and escalator contracts classified as "special" or "custom" are not addressed here. For such contracts, please refer to specified information, the contract folder, TIPs, Field Education Articles, Construction Letters, etc. for further information.

If you have any suggestions about this document, please contact the subject matter expert listed on this page.

# Counterweight Sheave Assembly

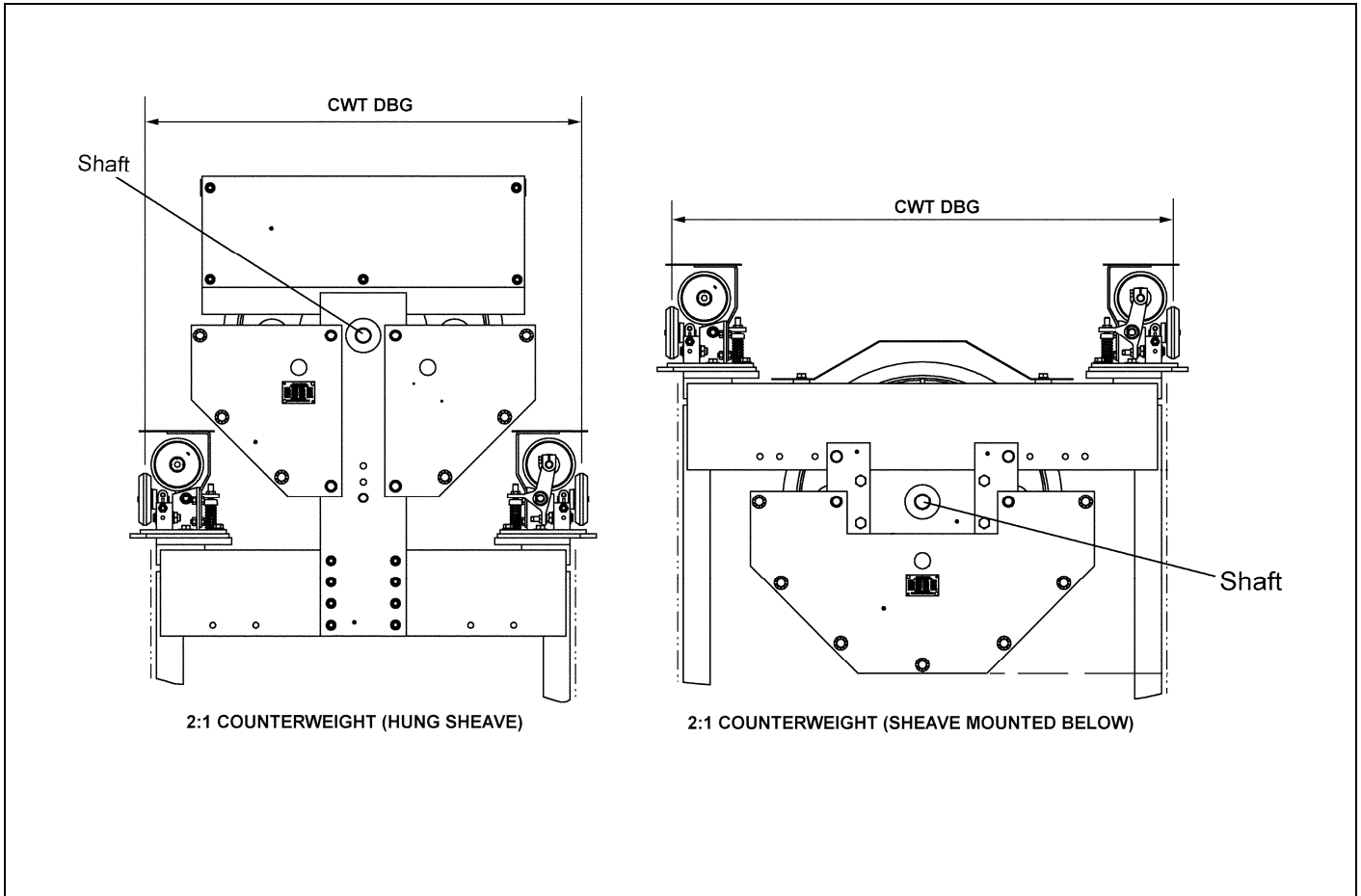
16-AAA25870G



**NOTE:** Verify casting number on sheave before ordering.

REF. No.	W/O VINTAGE PART No.	DESCRIPTION
1	---	Assembly, Sheave,  Pages 4-8 for Details
2	209J4	Bearing
	209J11	Bearing, Used with AAA25870G308 Arrangement and 495DB1 Shaft,  Page 6 for Details
3	346PJ4	Cover, Bearing
	346AKB1	Cover, Bearing, Used with AAA25870G308 Arrangement and 495DB1 Shaft,  Page 6 for Details
4	435C1	Fitting, Grease
5	---	Shaft,  Pages 4-8 for Details
6	---	Bolt, 3/8-16 x 3/4 Hex ZP
	---	Lockwasher, 3/8 Internal ZP

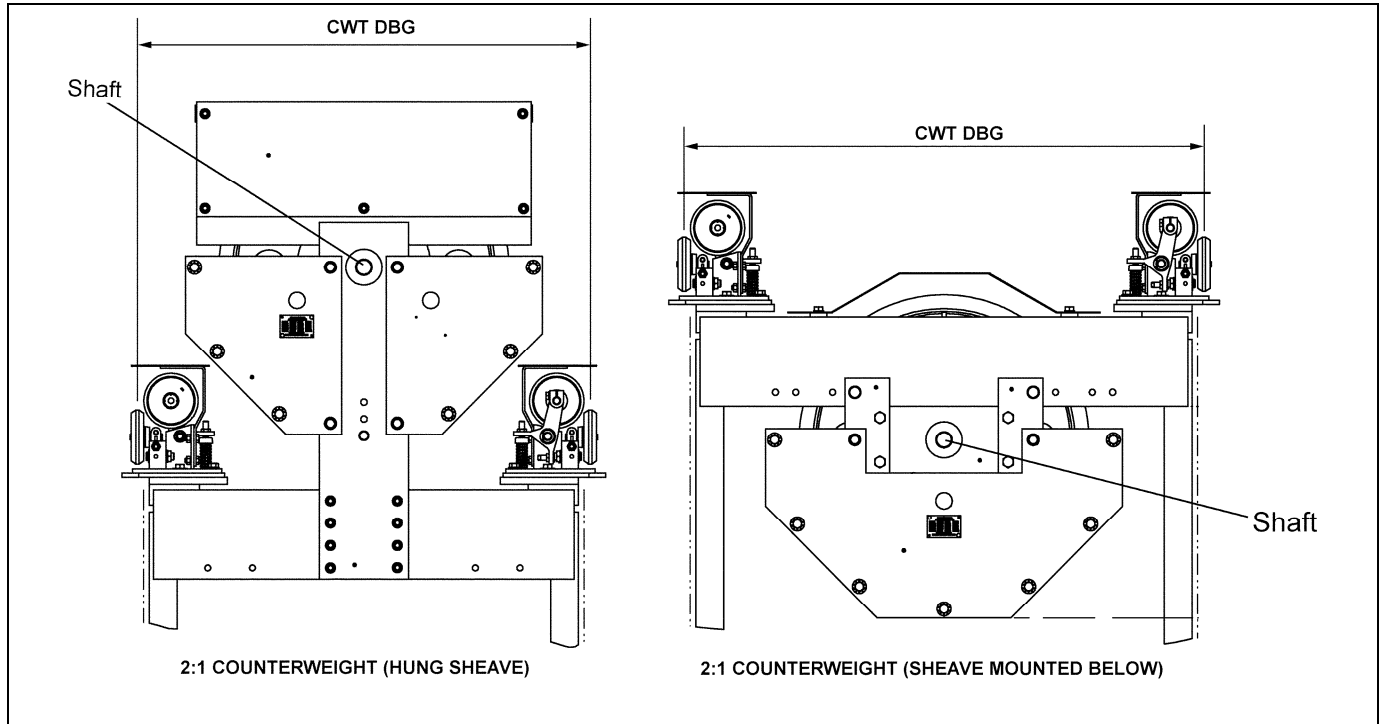
## 20.5- & 22-inch Dia. CWT Sheave Assembly



SHEAVE DIA. (in.)	SHEAVE WIDTH (in.)	HUB WIDTH (in.)	SHEAVE P/N	(No. of ROPE) & ROPE DIA. (in.)	SHAFT P/N (length)	BEARING P/N	SHEAVE (HUNG or BELOW)	(Ref.) CWT DBG (in.)
20.5	4.7	3.5	266BK1	(4) 1/2	A495AZ16 (6.93 in.)	209J4	Below	33.5 or 41.25
			266BK2	(5) 1/2				
			266BK3	(6) 1/2				
			266BK1	(4) 1/2	A495AZ12 (5.93 in.)		Hung	31.5 or 41.25
			266BK2	(5) 1/2				
			266BK3	(6) 1/2				
22	4.1	4.5	A266AM8	(5) 1/2	A495AZ2 (6.93 in.)	209J4	Below	39.5 or 41.25
	4.75	4.5	A266AG9	(6) 5/8				
	5.6	4.5	A266AG10	(7) 5/8				
	5.6	4.5	A266AG15	(8) 5/8				
	4.1	3.5	A266AM22	(4) 1/2	A495AZ16 (6.93 in.)			
	4.1	3.5	A266AM23	(5) 1/2				
	4.75	3.5	266BL1	(6) 1/2				

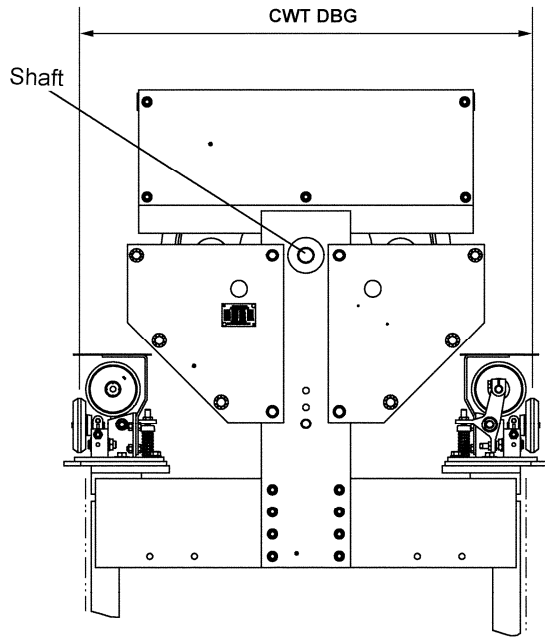
# 25-inch Dia. CWT Sheave Assembly

16-AAA25870G

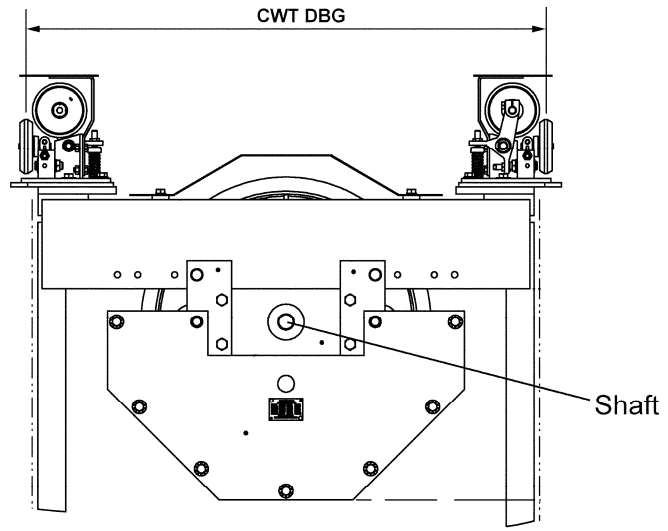


SHEAVE DIA. (in.)	SHEAVE WIDTH (in.)	HUB WIDTH (in.)	SHEAVE P/N	(No. of ROPE) & ROPE DIA. (in.)	SHAFT P/N (length)	BEARING P/N	SHEAVE (HUNG or BELOW)	(Ref.) CWT DBG (in.)
25	5.6	4.5	AAA266BV1	(5) 1/2	A495AZ8 (7.93 in.)	209J4	Hung	33.5 or 39.5
			AAA266BV2	(6) 1/2				
			AAA266BV3	(7) 1/2				
			AAA266BV4	(8) 1/2				
			AAA266BV5	(5) 5/8				
			AAA266BV6	(6) 5/8				
			AAA266BV7	(7) 5/8				
			AAA266BV1	(5) 1/2	A495AZ2 (6.93 in.)			45.5
			AAA266BV2	(6) 1/2				
			AAA266BV3	(7) 1/2				
			AAA266BV4	(8) 1/2				
			AAA266BV5	(5) 5/8				
			AAA266BV6	(6) 5/8				
			AAA266BV7	(7) 5/8				
			AAA266BV1	(5) 1/2	A495AZ3 (7.18 in.)		51.5	
			AAA266BV2	(6) 1/2				
			AAA266BV3	(7) 1/2				
			AAA266BV4	(8) 1/2				
			AAA266BV5	(5) 5/8				
			AAA266BV6	(6) 5/8				
			AAA266BV7	(7) 5/8				

(Continued on next page)



2:1 COUNTERWEIGHT (HUNG SHEAVE)

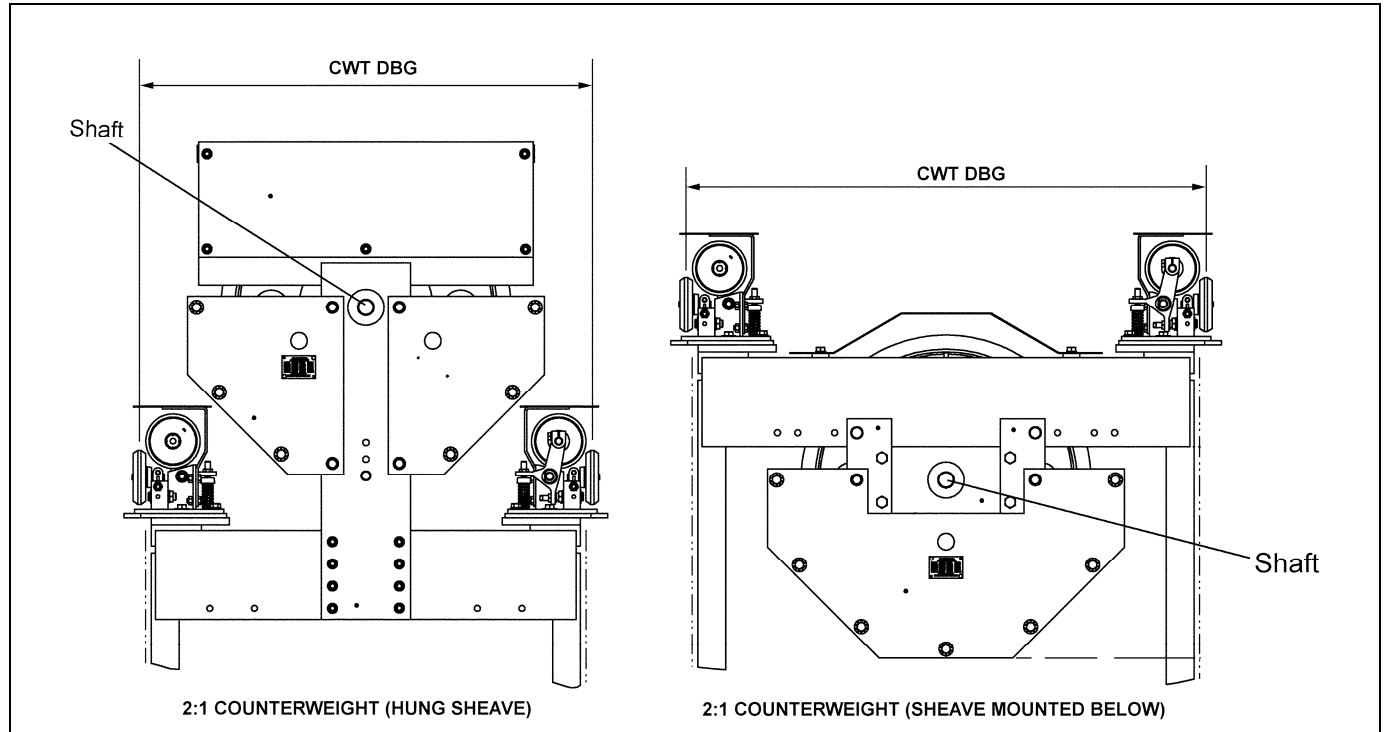


2:1 COUNTERWEIGHT (SHEAVE MOUNTED BELOW)

SHEAVE DIA. (in.)	SHEAVE WIDTH (in.)	HUB WIDTH (in.)	SHEAVE P/N	(No. of ROPE) & ROPE DIA. (in.)	SHAFT P/N (length)	BEARING P/N	SHEAVE (HUNG or BELOW)	(Ref.) CWT DBG (in.)
25	4.7	3.5	266BG2	(4) 1/2	495DB1 (5.93 in.)	209J11	Hung	31.5 or 41.25
			266BG3	(5) 1/2				
			266BG4	(6) 1/2				
			266BG5	(4) 5/8				
			266BG6	(5) 5/8				
			266BG7	(4) 1/2				
	266BG8	(5) 1/2	A495AZ16 (6.93 in.)	209J4	Below or Hung	33.5, 39.5, or 41.25		
	266BG9	(6) 1/2						
	266BG11	(7) 1/2						
5.5			266BG12	(8) 1/2	A495AZ20 (7.93 in.)			39.5

# 28-inch Dia. CWT Sheave Assembly

16-AAA25870G



SHEAVE DIA. (in.)	SHEAVE WIDTH (in.)	HUB WIDTH (in.)	SHEAVE P/N	(No. of ROPE) & ROPE DIA. (in.)	SHAFT P/N (length)	BEARING P/N	SHEAVE (HUNG or BELOW)	(Ref.) CWT DBG (in.)
28	5.6	4.5	A266AJ23	(5) 1/2	A495AZ2 (6.93 in.)			45.5
			A266AJ8	(6) 1/2				
			A266AJ28	(7) 1/2				
			A266AJ25	(8) 1/2				
			A266AJ9	(5) 5/8				
			A266AJ10	(6) 5/8				
			A266AJ24	(7) 5/8				
	A266AJ23	(5) 1/2	A495AZ8 (7.93 in.)	Hung	33.5 or 39.5			
	A266AJ8	(6) 1/2						
	A266AJ28	(7) 1/2						
	A266AJ25	(8) 1/2						
	A266AJ9	(5) 5/8						
	A266AJ10	(6) 5/8						
	A266AJ24	(7) 5/8						
		4.7	3.5	266BH7	(4) 1/2	A495AZ12 (5.93 in.)		33.5
	266BH6			(5) 1/2				
	266BH8			(6) 1/2				

(Continued on next page)

16-AAA25870G

28-inch Dia. CWT Sheave Assembly

SHEAVE DIA. (in.)	SHEAVE WIDTH (in.)	HUB WIDTH (in.)	SHEAVE P/N	(No. of ROPE) & ROPE DIA. (in.)	SHAFT P/N (length)	BEARING P/N	SHEAVE (HUNG or BELOW)	(Ref.) CWT DBG (in.)
28	5.6	4.5	A266AJ23	(5) 1/2	A495AZ2 (6.93 in.) <b>or</b> A495AZ3 (7.18 in.) (w/o rope compensation)	209J4	Below	45.5 or 51.5
			A266AJ8	(6) 1/2				
			A266AJ28	(7) 1/2				
			A266AJ25	(8) 1/2				
			A266AJ9	(5) 5/8				
			A266AJ10	(6) 5/8				
			A266AJ24	(7) 5/8				
			A266AJ23	(5) 1/2	A495AZ3 (7.18 in.) (w/o rope compensation) <b>or</b> A495AZ15 (8.18 in.) Offset Sheave			51.5
			A266AJ8	(6) 1/2				
			A266AJ28	(7) 1/2				
			A266AJ25	(8) 1/2	A495AZ11 (8.18 in.)			45.5, 51.5, or 57.5
			A266AJ9	(5) 5/8				
			A266AJ10	(6) 5/8				
			A266AJ24	(7) 5/8				
			A266AJ23	(5) 1/2				
			A266AJ8	(6) 1/2				
			A266AJ28	(7) 1/2				