

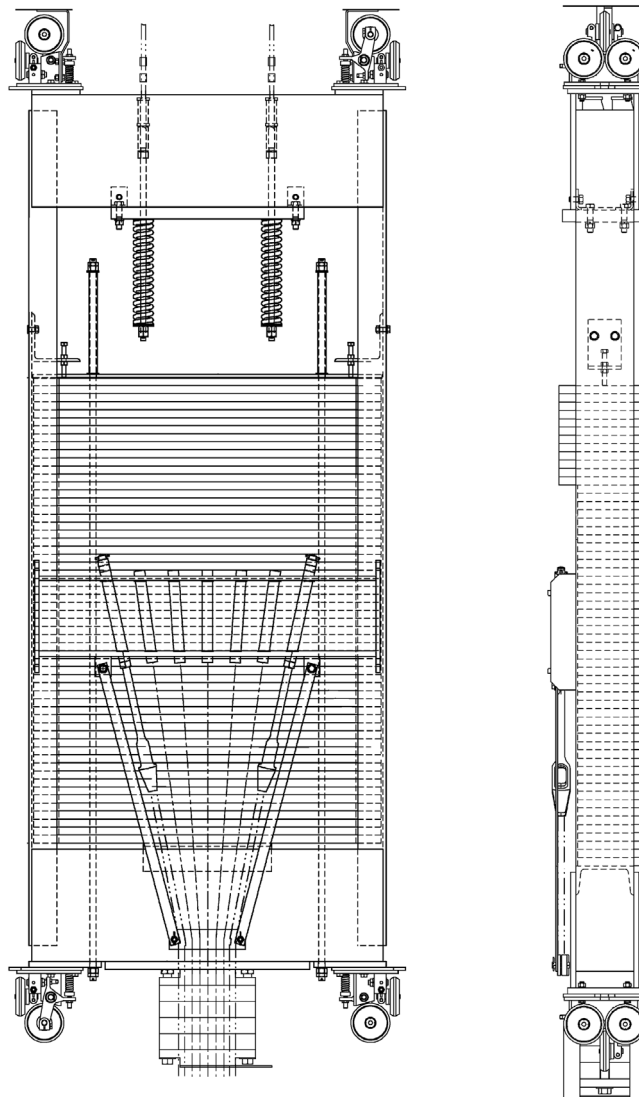
**Counterweight
Assembly, 7" Uprights
and Tie-Down Device**

Spare Parts Leaflet

16-AAA6055CP

June 1, 2005 / Page 1 of 4

**W/O
VINTAGE**



Unpublished Work—© Otis Elevator Co.; 2005

OTIS

Safety First!

SERVICE ENGINEERING

Otis Elevator Company

Bloomfield, Connecticut USA

Leaflet Description

This counterweight is arranged for tie-down compensation.

Leaflet Revisions

Date Revised	Subject Matter Expert	Reason for Revision
June 1, 2005	Sean Mismas	New SPL

Related Drawings

Drawing No.	Title
AAA6055CP	Assembly and Arrangement Counterweight with Tie-Down Device, 7" Upright

Related Documents

Document ID	Title
SPL 11-AAA712P/Q/R	Wire Rope, Shackles & Springs
SPL 14-AAA24120F	Flexible Guide Clamp Safeties
SPL 14-6261AD	4-7/8 inch Roller Guide
SPL 14-KAA25830A	125 mm Roller Guide
SPL 16-AAA25800H	Counterweight, Wood Blocking

Subject Matter Expert

Name	Department
Sean Mismas	OSC Service Engineering

About Spare Parts Leaflets...

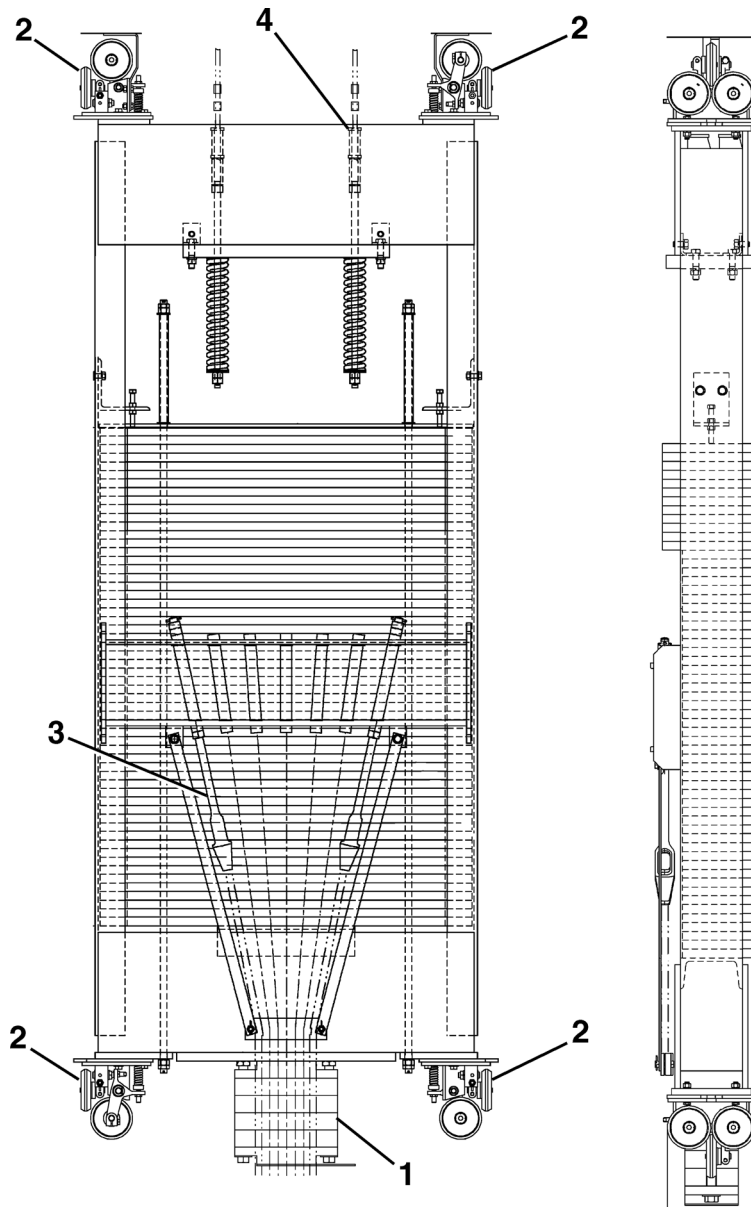
This document lists the lowest replaceable units (LRUs) for the standard version of the product. The LRUs are chosen by a team of Otis associates representing engineering and manufacturing.



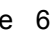
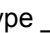
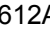
While goal of this document is to make parts identification as easy as possible, the document cannot be all-inclusive. Elevator and escalator contracts classified as "special" or "custom" are not addressed here. For such contracts, please refer to specified information, the contract folder, TIPs, Field Education Articles, Construction Letters, etc. for further information.

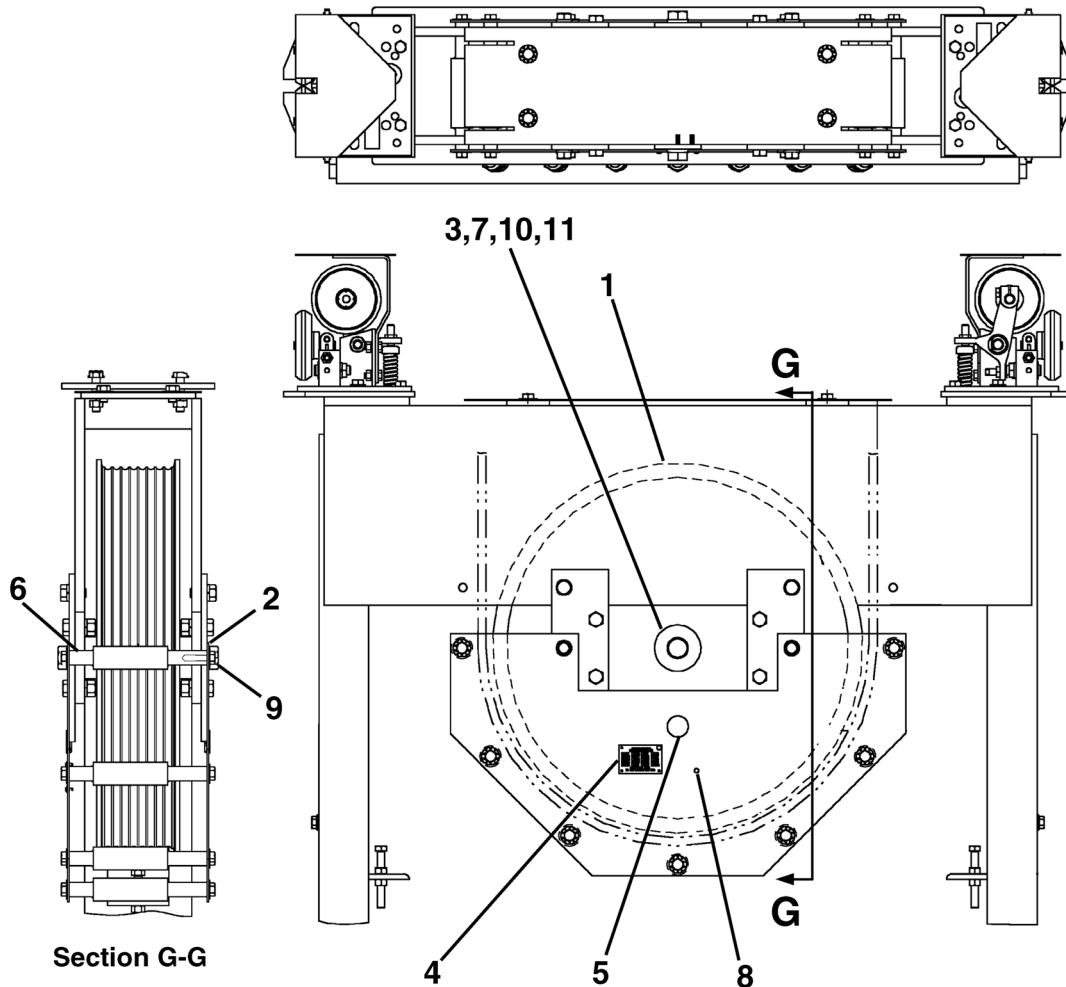
If you have any suggestions about this document, please contact the subject matter expert listed on this page.

Counterweight Assembly

16-AAA6055CP



W/O VINTAGE		
REF. No.	PART No.	DESCRIPTION
1	---	Assembly, Wood Blocking, Type AAA25800H,  SPL 16-AAA25800H
2	---	Guide Shoe, Roller, 125 mm Roller, Type KAA25830A,  SPL 14-KAA25830A
	---	Guide Shoe, Roller, 4-7/8 in. Roller, Type _6261AD,  SPL 14-6261AD
3	---	Shackle, Rope Socket, Babbitted, Type _229_,  SPL 11-AAA712P/Q/R
4	---	Shackle, Wedge Clamp, Type A_6612AW,  SPL 11-AAA712P/Q/R



REF. No.	W/O VINTAGE PART No.	DESCRIPTION
1	---	Assembly, Sheave, Type AAA25870G, SPL 16-AAA25870G
2	130J11	Lockwasher, Inter/External, 1/2 in.
3	78A1	Pin
4	102FH1	Plate, Data
5	444BL13	Plug
6	384PX70	Retainer, Rope
7	127VB28	Washer (special)
8	---	Screw, #6 x 3/8, Zinc Plated
9	---	Bolt, Hex, 1/2-13 x 3/4 in., Zinc Plated
10	---	Bolt, Hex, 7/8-9 x 1-3/4 in., Zinc Plated
11	---	Lockwasher, Spring, 7/8 in., Zinc Plated