

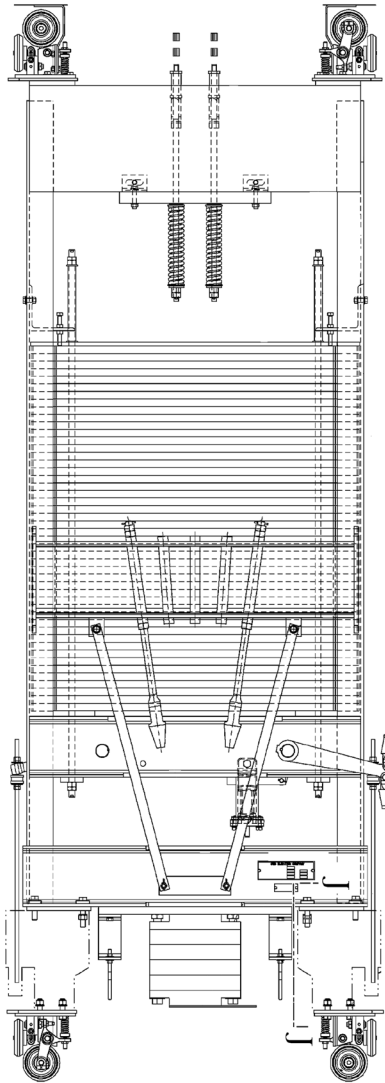
# Counterweight Assembly, 7" Uprights

Spare Parts Leaflet

16-AAA6055DA

November 2, 2005 / Page 1 of 5

W/O  
VINTAGE



Unpublished Work—© Otis Elevator Co.; 2005

**OTIS**

**Safety First!**

**SERVICE ENGINEERING**

**Otis Elevator Company**

**Bloomfield, Connecticut USA**

**Leaflet Description**

The counterweight assembly is used with the 14C-B safety and can be arranged with or without tie-down compensation. It has a 13,500 lb total weight capacity. The distance-between-guides (DBG): 45.5, 51.5, or 57.5 inches.

**Leaflet Revisions**

<b>Date Revised</b>	<b>Subject Matter Expert</b>	<b>Reason for Revision</b>
November 2, 2005, 2002	Sean Mismas	New SPL

**Related Drawings**

<b>Drawing No.</b>	<b>Title</b>
AAA6055DA	Assembly and Arrangement of Type A6055DA Counterweight, 7" Uprights

**Related Documents**

<b>Document ID</b>	<b>Title</b>
SPL 11-AAA712P/Q/R	Wire Rope, Shackles & Springs
SPL 14-6261AD	4-7/8 inch Roller Guide
SPL 14-AAA24120F	Flexible Guide Clamp Safeties
SPL 14-KAA25830B	76 mm Roller Guide
SPL 16-AAA24800F	Counterweight: Chain Hitch
SPL 16-AAA25800H	Counterweight: Wood Blocking

**Subject Matter Expert**

<b>Name</b>	<b>Department</b>
Sean Mismas	OSC Service Engineering

**About Spare Parts Leaflets...**

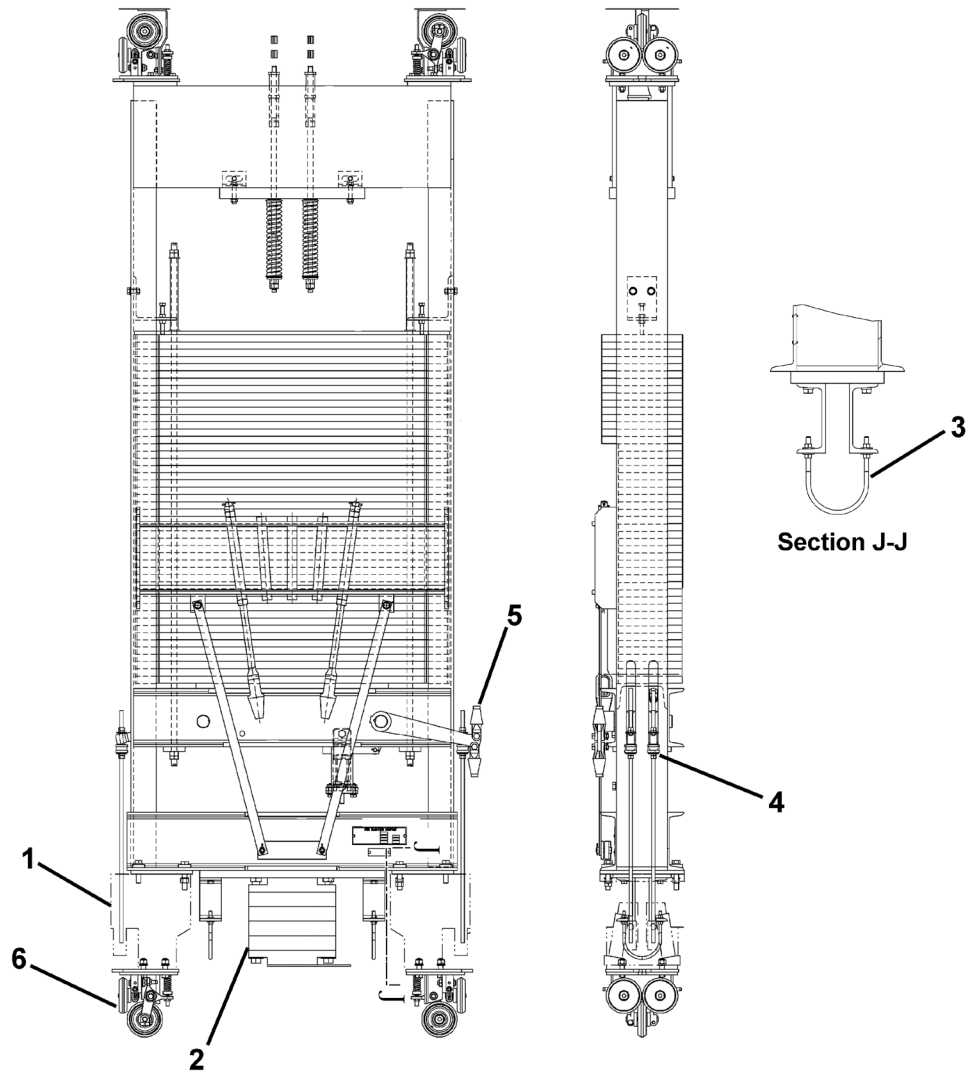
This document lists the lowest replaceable units (LRUs) for the standard version of the product. The LRUs are chosen by a team of Otis associates representing engineering and manufacturing.







While goal of this document is to make parts identification as easy as possible, the document cannot be all-inclusive. Elevator and escalator contracts classified as "special" or "custom" are not addressed here. For such contracts, please refer to specified information, the contract folder, TIPs, Field Education Articles, Construction Letters, etc. for further information.

If you have any suggestions about this document, please contact the subject matter expert listed on this page.

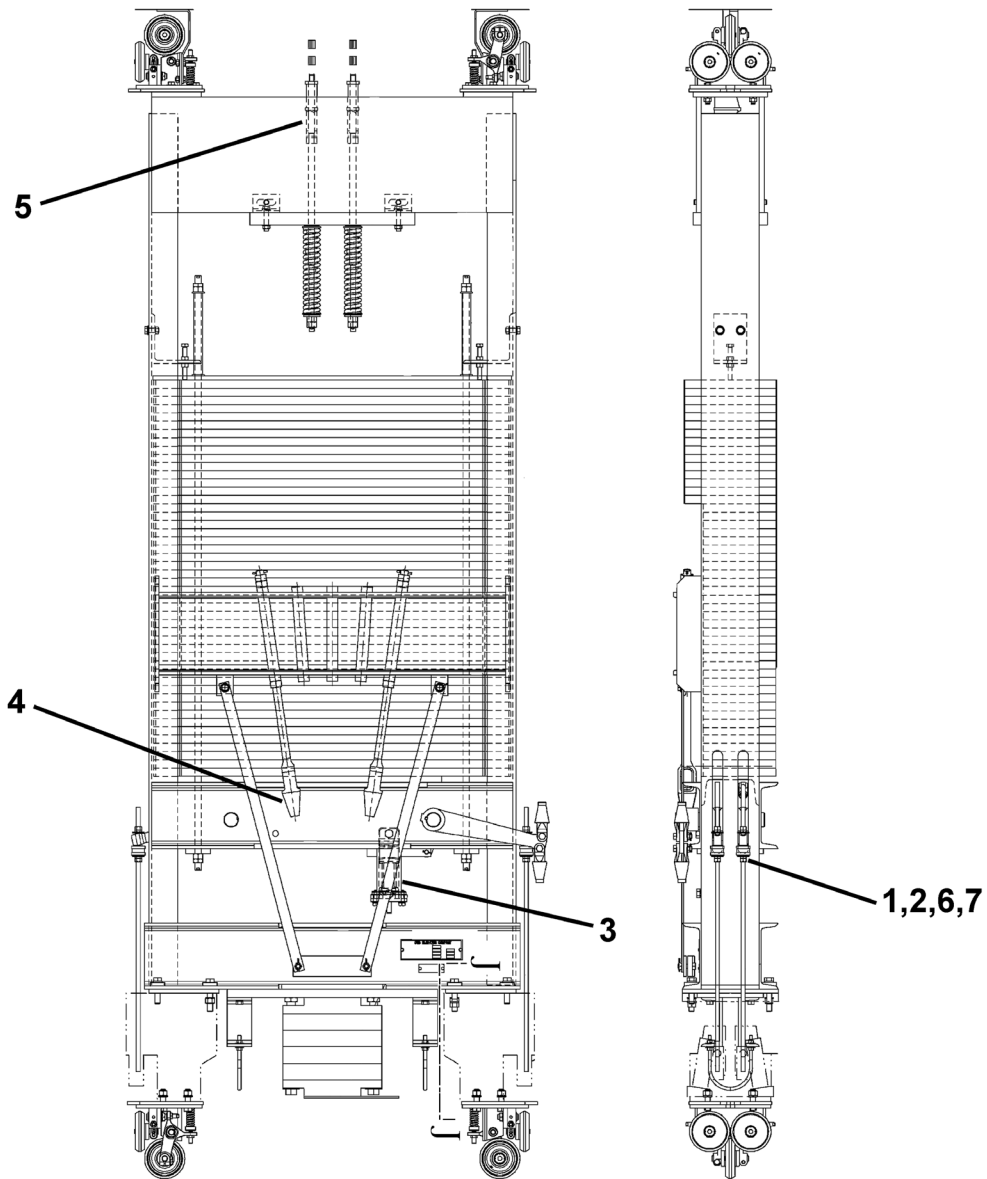
# Counterweight Parts




**16-AAA6055DA**



W/O VINTAGE		
REF. No.	PART No.	DESCRIPTION
1	---	Assembly, Safety, Type 14C-B,  SPL 14-AAA24120F
2	---	Blocking, Wood,  SPL 16-AAA25800H
3	---	Bracket,  SPL 16-AAA24800F
4	320BE4	Bumper
5	---	Clevis, Type 227C,  SPL 11-AAA712P/Q/R
6	---	Guide Shoe, Roller, 125 mm Roller,  SPL 14-KAA25830A
	---	Guide Shoe, Roller, 4-7/8 in. Roller,  SPL 14-A6261AD

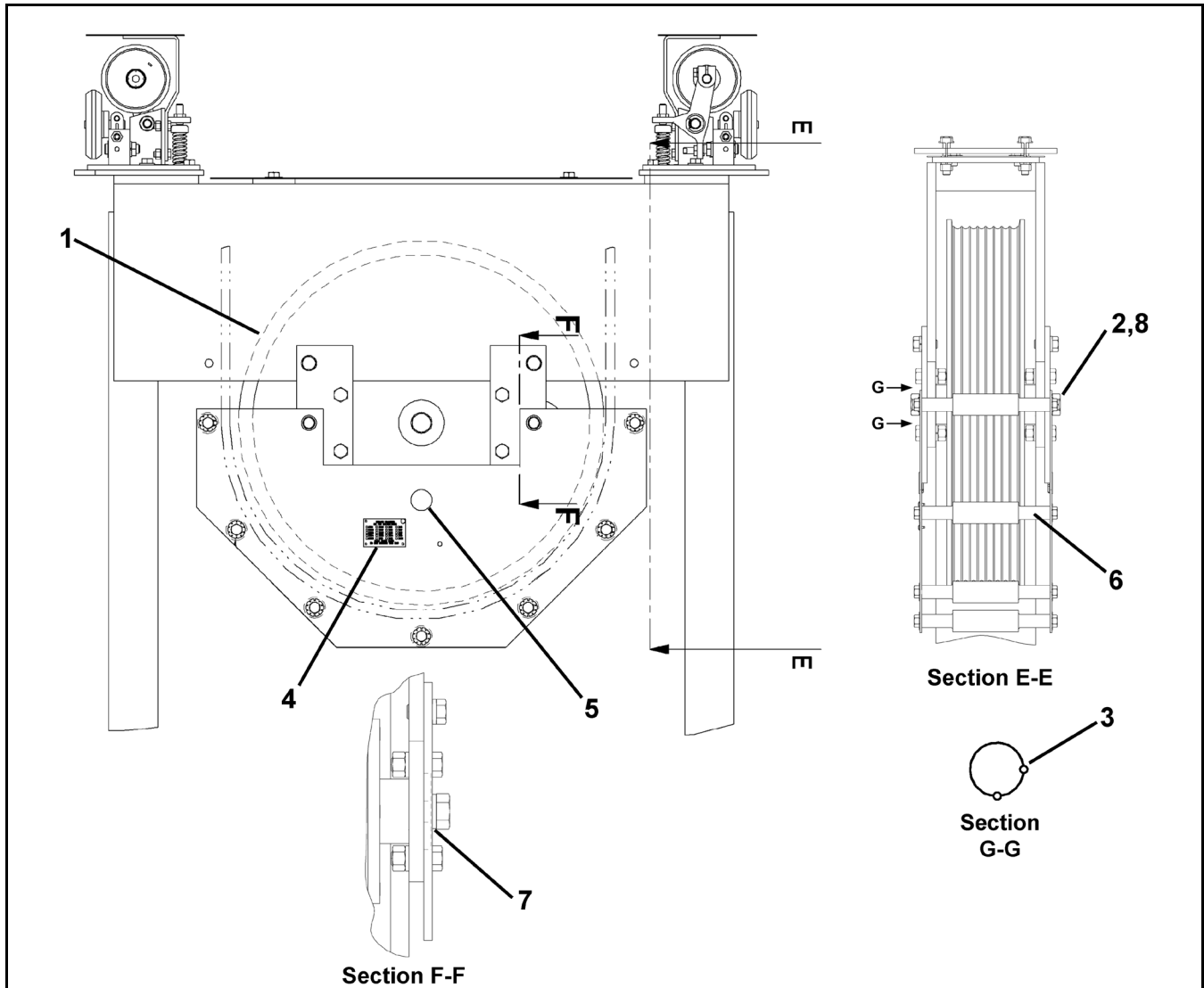
Continued on next page.



W/O VINTAGE		
REF. No.	PART No.	DESCRIPTION
1	ISO4035M12-04-Z	Nut, Jam, Hex, M12 x 1.75 in. L
2	ISO4032M12-10-Z	Nut, Jam, M12 x 1.75 in. L
3	---	Releasing Carrier, Type A6484A,  SPL 14-AAA24120F
4	---	Shackle, Rope Socket (for compensation),  SPL 11-AAA712P/Q/R
5	---	Shackle, Wedge Clamp,  SPL 11-AAA712P/Q/R
6	127AD6	Washer (special)
7	138A1	Washer, Cup, 1/2 in.

# 2:1 Roping Parts

**16-AAA6055DA**



W/O VINTAGE		
REF. No.	PART No.	DESCRIPTION
1	---	Assembly, Sheave, Type AAA25870G,  SPL 16-AAA25870G
2	130J11	Lockwasher, Internal/External, 1/2 in.
3	78A1	Pin, Spring, 0.688 in. L, 0.25 in.
4	102FH1	Plate, Data
5	444BL13	Plug
6	384PX71	Retainer, Rope
7	127VB78	Washer (special)
8	---	Bolt, Hex, 1/2-13 x 3/4 in. L (used with 2:1 roping)
	---	Bolt, Hex, 1/2-13 x 1.0 in. L (used with tie-down compensation)