

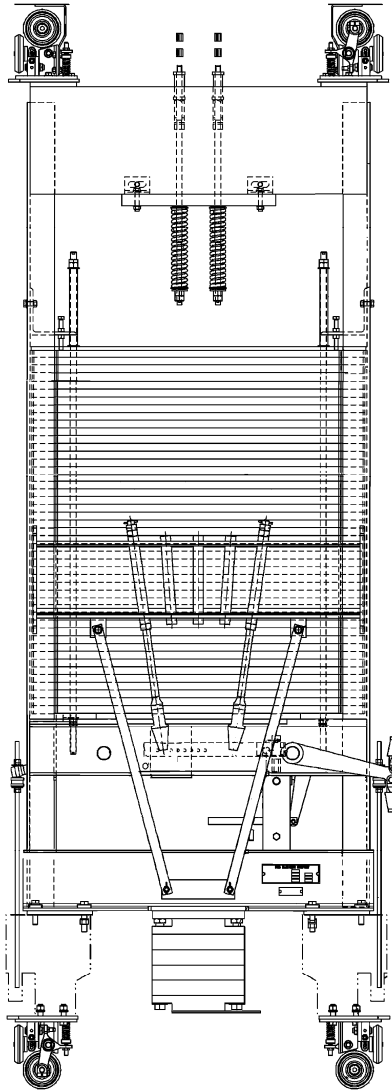
**Counterweight
Assembly, 7" Uprights**

Spare Parts Leaflet

16-AAA6055DE

June 1, 2005 / Page 1 of 3

**W/O
VINTAGE**



OTIS

Safety First!

**SERVICE ENGINEERING
Otis Elevator Company
Bloomfield, Connecticut USA**

Leaflet Description

The counterweight assembly is used with the 14C-B safety, tie-down compensation, 7-inch uprights, and inertia releasing device. It is arranged for 1:1 roping and for elevator rises greater than 500 feet.

Leaflet Revisions

Date Revised	Subject Matter Expert	Reason for Revision
June 1, 2005	Sean Mismas	New SPL

Related Drawings

Drawing No.	Title
AAA6055DE	Assembly and Arrangement of Type A6055DE Counterweight, 7" Uprights

Related Documents

Document ID	Title
SPL 11-AAA712P/Q/R	Wire Rope, Shackles & Springs
SPL 14-AAA24120F	Flexible Guide Clamp Safeties
SPL 14-6261AD	4-7/8 inch Roller Guide
SPL 14-KAA25830B	76 mm Roller Guide
SPL 16-AAA24800F	Counterweight: Chain Hitch
SPL 16-AAA25800H	Counterweight: Wood Blocking

Subject Matter Expert

Name	Department
Sean Mismas	OSC Service Engineering

About Spare Parts Leaflets...

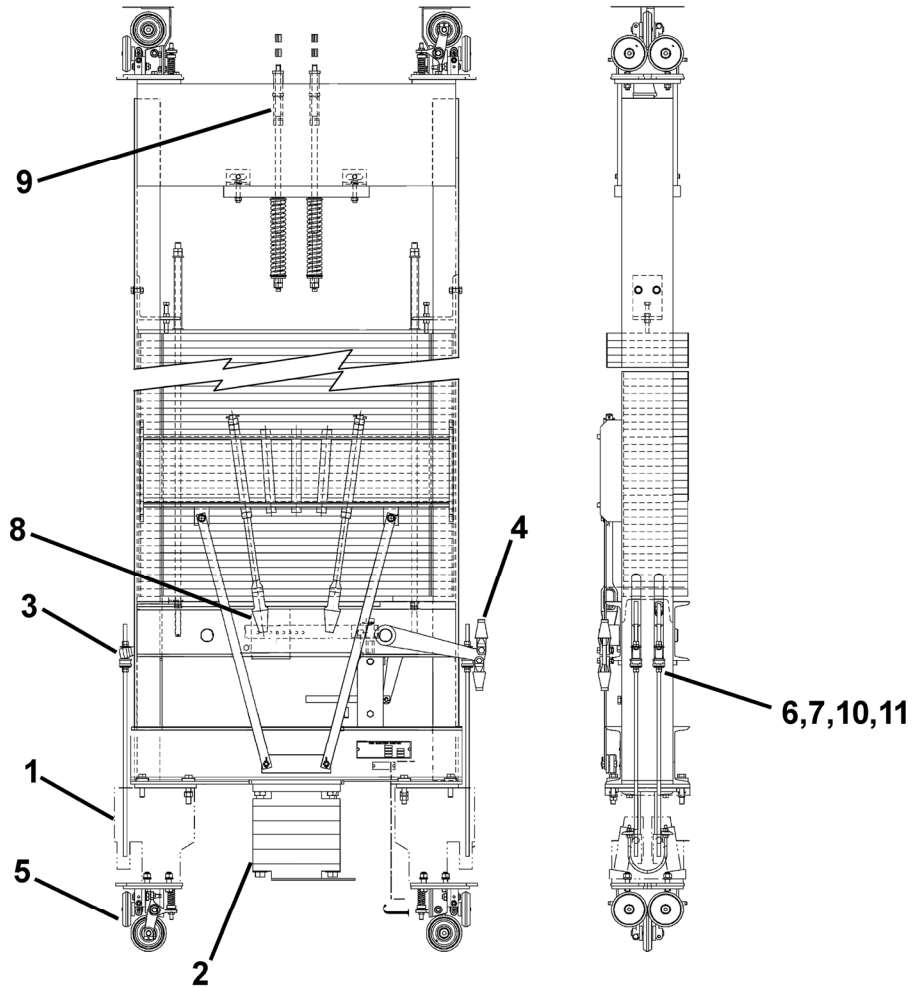
This document lists the lowest replaceable units (LRUs) for the standard version of the product. The LRUs are chosen by a team of Otis associates representing engineering and manufacturing.








While goal of this document is to make parts identification as easy as possible, the document cannot be all-inclusive. Elevator and escalator contracts classified as "special" or "custom" are not addressed here. For such contracts, please refer to specified information, the contract folder, TIPs, Field Education Articles, Construction Letters, etc. for further information.

If you have any suggestions about this document, please contact the subject matter expert listed on this page.

Counterweight Parts

16-AAA6055DE



W/O VINTAGE		
REF. No.	PART No.	DESCRIPTION
1	---	Assembly, Safety, Type 14C-B,  SPL 14-AAA24120F
2	---	Blocking, Wood,  SPL 16-AAA25800H
3	320BE4	Bumper
4	---	Clevis, Type 227C (as specified),  SPL 11-AAA712P/Q/R
5	---	Guide Shoe, Roller, 125 mm Roller,  SPL 14-KAA25830A
	---	Guide Shoe, Roller, 4-7/8 in. Roller,  SPL 14-A6261AD
6	ISO4035M12-04-Z	Nut, Jam, Hex, M12 x 1.75 in. L
7	ISO4032M12-10-Z	Nut, Jam, M12 x 1.75 in. L
8	---	Shackle, Rope Socket, Babbitted,  SPL 11-AAA712P/Q/R
9	---	Shackle, Wedge Clamp,  SPL 11-AAA712P/Q/R
10	127AD6	Washer (special)
11	138A1	Washer, Cup, 1/2 in.