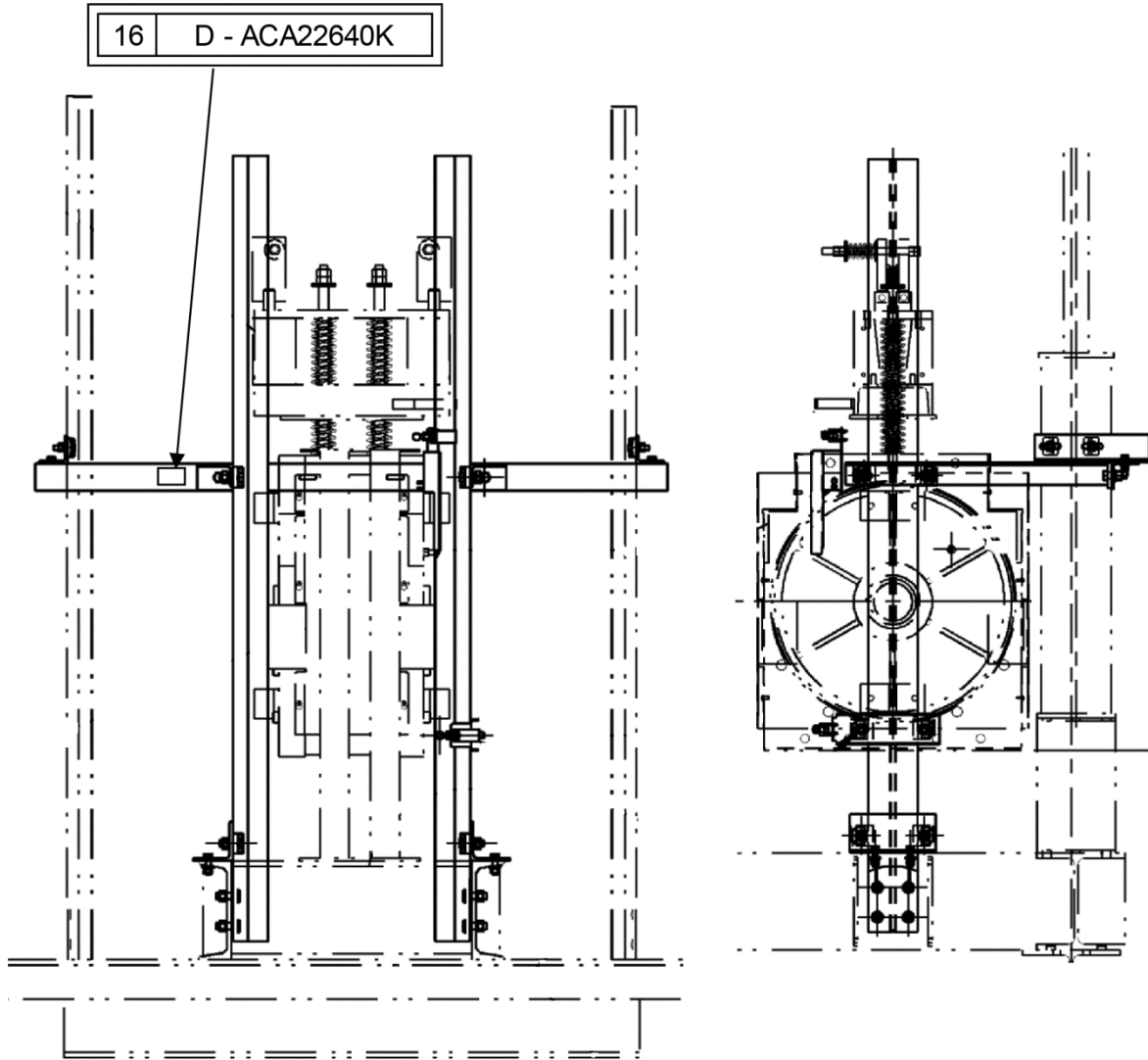


**Wedge Tie-down
Compensation Device
GMH**

Spare Parts Leaflet

16-ACA22500K

June 9, 2014 / Page 1 of 5



OTIS

Safety First!

SERVICE ENGINEERING
Otis Elevator Company
HRSIT, Shanghai China

Leaflet Description

The SPL describes the lowest replaceable parts for ACA22500K the AAA24003A wedge type tie-down compensation device used on GMH (Global model high rise).

Leaflet Revisions

Date Revised	Subject Matter Expert	Reason for Revision
June 9, 2014	Goto, Yasuhiro	New SPL

Related Drawings

Drawing No.	Title	Drawing No.	Title
ACA22500K	Wedge Tie-Down Comp.		

Related Documents

Document ID	Title
16-6042P	Monomass Tie Down Compensation

Subject Matter Expert

Name	Department
Goto, Yasuhiro	SIT High Rise Shanghai

About Spare Parts Leaflets...

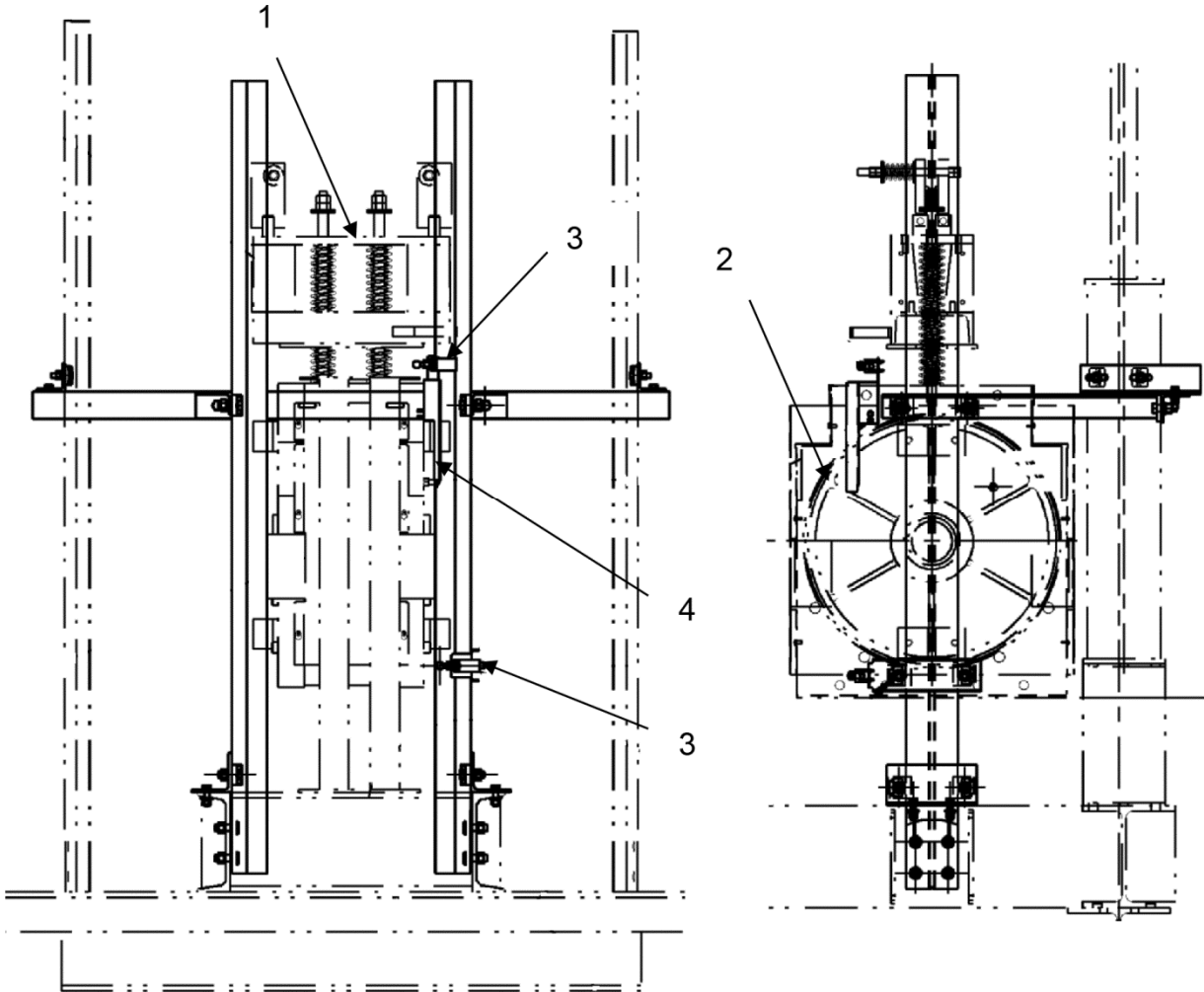
This document lists the lowest replaceable units (LRUs) for the standard version of the product. The LRUs are chosen by a team of Otis associates representing engineering and manufacturing.



While goal of this document is to make parts identification as easy as possible, the document cannot be all-inclusive. Elevator and escalator contracts classified as “special” or “custom” are not addressed here. For such contracts, please refer to specified information, the contract folder, TIPs, Field Education Articles, Construction Letters, etc. for further information.

If you have any suggestions about this document, please contact the subject matter expert listed on this page.

Wedge Tie-down Compensation Device

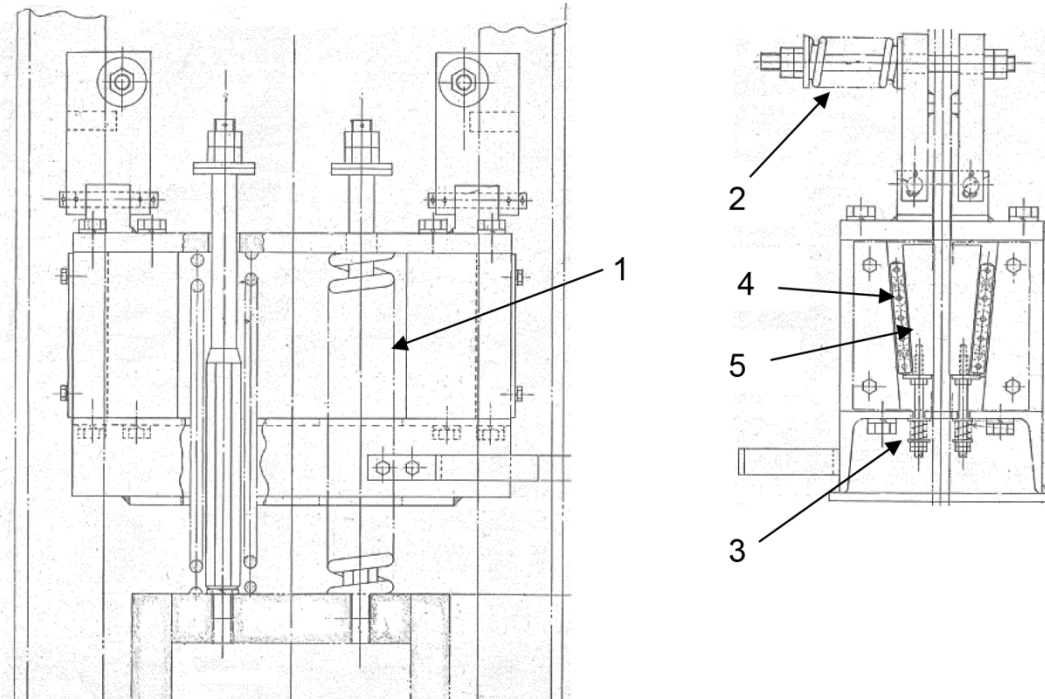
16-ACA22500K



ACA22500K		
REF. No.	PART No.	DESCRIPTION
1	---	Wedge Tie-Down Device  See Page 4
2	---	Compensation Sheave  See Page 5
3	AAA26900J1	Limit Switch
4	AAA283BRE1	Angle, Cam

Wedge Tie-down Compensation Device

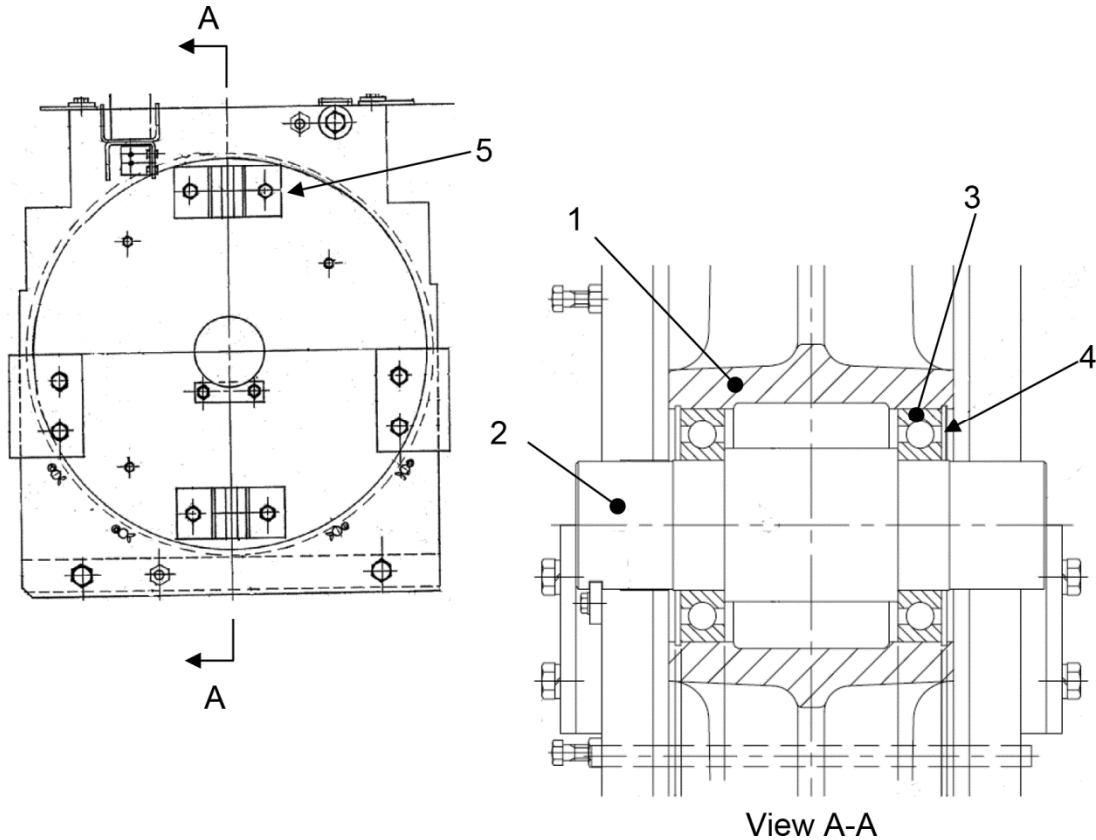
16-ACA22500K



ACA22500K		
REF. No.	PART No.	DESCRIPTION
1	4R08624B	Spring 42 mm ID, 68 mm OD
2	4R07069A	Spring 35 mm ID, 47 mm OD
3	4R08627A	Spring 11.7 mm ID x 16.3 mm OD
4	3R08229A	Roller Assembly
5	3R08223A	Wedge

Wedge Tie-down Compensation Device

16-ACA22500K



ACA22500K				
REF. No.	PART No.	DESCRIPTION	Sheave Dia. (mm)	Comp. Rope No.
1	2R56627A	Compensation Sheave	600	6
	2R56627B	Compensation Sheave		5 or 7
	2R56628A	Compensation Sheave	710	6
	2R56628B	Compensation Sheave		5 or 7
2	3R06395B	Shaft (Length = 404 mm)	600	-
	3R06395A	Shaft (Length = 364 mm)	710	-
3	3830126	Ball Bearing	-	-
4	3822507	Snap Ring 180 mm internal (DIN472)	-	-
5	3R06290	Guide, rail	-	-