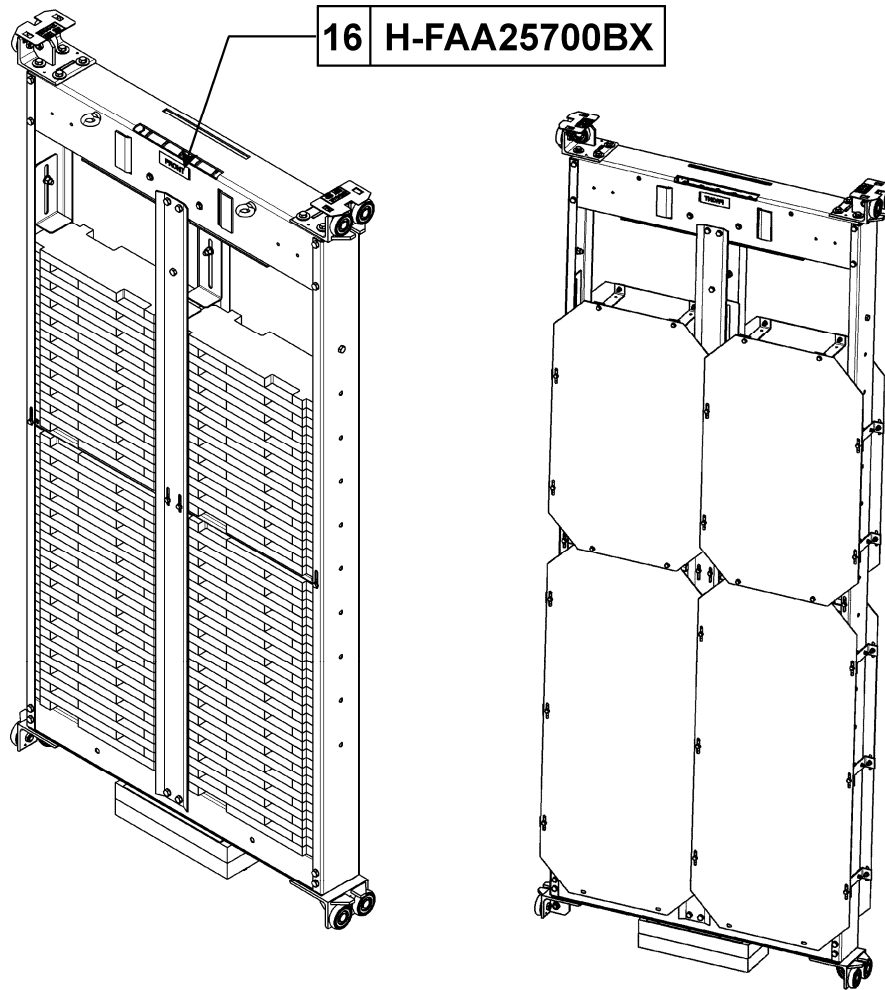


Gen2™
953 kg and 1134 kg
Duties Counterweights

Spare Parts Leaflet
16-FAA25700BX
June 8, 2011 / Page 1 of 4



OTIS

Safety First!

SERVICE ENGINEERING
Otis Elevator Company
Bloomfield, Connecticut USA

Leaflet Description

This leaflet provides spare part information for FAA25700BX counterweight assembly. This component is used in the 953 kg (2100 lb.) and 1134 kg (2500 lb.) duty Gen2™ elevators for A17.1–2000 applications. An arrangement for steel fillers and concrete fillers is presented in this document.

Leaflet Revisions

Date Revised	Subject Matter Expert	Reason for Revision
July 16, 2003	Jim Draper	New SPL
June 8, 2011	Gary Mendrala	Updated parts list

Related Drawings

Drawing No.	Title	Drawing No.	Title
FAA25700BX	Counterweight Assembly	AAA20780P	Sheave Assembly
---	---	---	---

Related Documents

Document ID	Title
SPL 14-AAA24180AW	Roller Guide Car and Counterweight 76 mm Diameter
---	---

Subject Matter Expert

Name	Department
Gary Mendrala	OSC Service Engineering

About Spare Parts Leaflets...

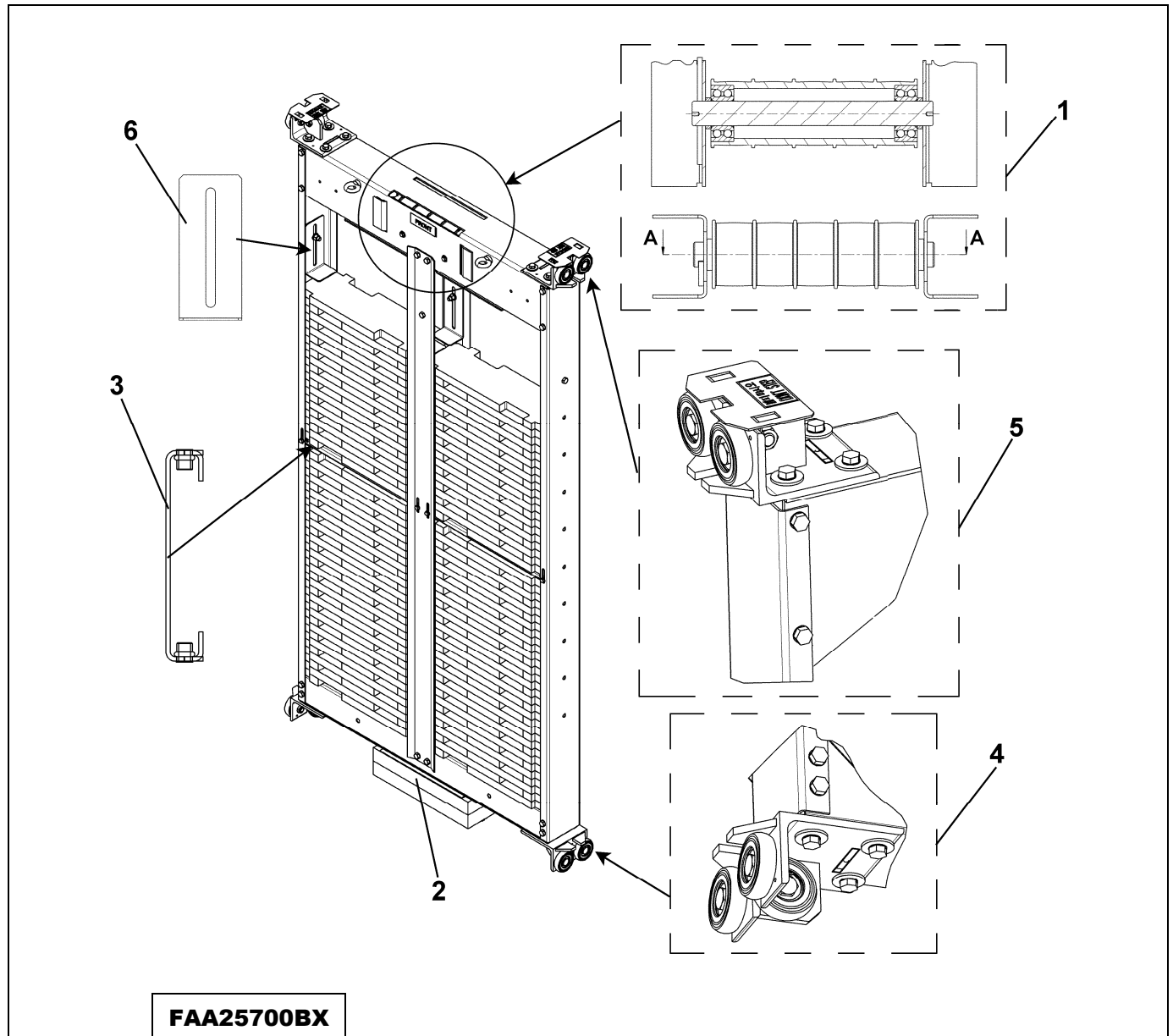
This document lists the lowest replaceable units (LRUs) for the standard version of the product. The LRUs are chosen by a team of Otis associates representing engineering and manufacturing.

While goal of this document is to make parts identification as easy as possible, the document cannot be all-inclusive. Elevator and escalator contracts classified as “special” or “custom” are not addressed here. For such contracts, please refer to specified information, the contract folder, TIPS, Field Education Articles, Construction Letters, etc. for further information.

If you have any suggestions about this document, please contact the subject matter expert listed on this page.

Counterweight w/Steel Fillers

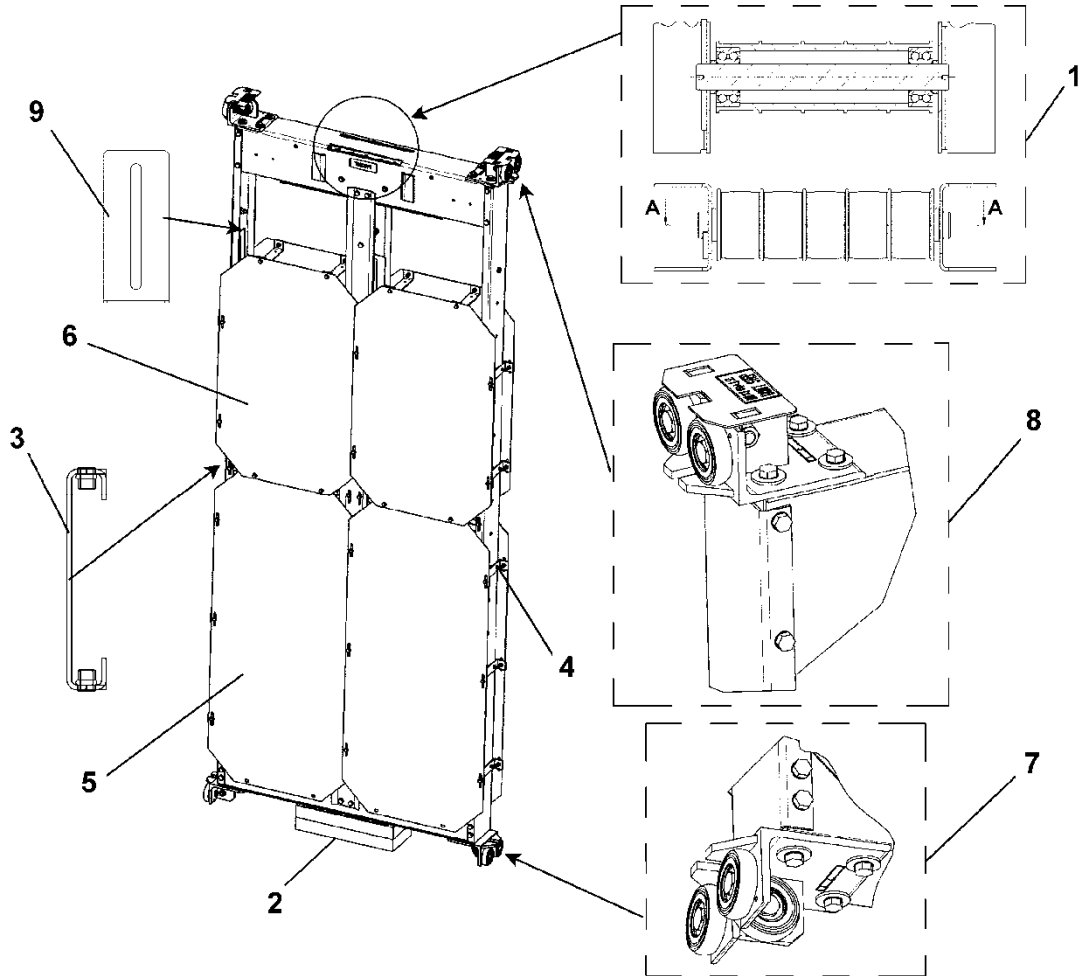
16-FAA25700BX



FAA25700BX			
REF. No.	PART No.	DESCRIPTION	
1	AAA20780A2 AAA20780P6	Assembly, Sheave (with Bearings), 5 Grooves	
2	FAA310Y2	Block, Wood	
3	FAA315HC1	Brace	
4	---	Guide, Lower Roller, Used with # 1-1/2 and #1 Rails	See SPL 14-AAA24180AW
		Guide, Lower Roller, Used with #2 Rails	
5	---	Guide, Upper Roller, Used with # 1-1/2 and #1 Rails	
		Guide, Upper Roller, Used with #2 Rails	
6	FAA477Z1	Stop (anti-jumping for fillers)	

16-FAA25700BX

Counterweight w/Concrete Fillers



FAA25700BX		
REF. No.	PART No.	DESCRIPTION
1	AAA20780A2 AAA20780P6	Assembly, Sheave (with bearings), 5 Grooves
2	FAA310Y2	Block, Wood
3	FAA315GW1	Brace
4	FAA316CHV1	Bracket, Carter
5	FAA330AB1	Cover, Lower
6	FAA330AB2	Cover, Upper
7	---	Guide, Lower Roller, Used with # 1-1/2 and #1 Rails
		Guide, Lower Roller, Used with #2 Rails
8	---	Guide, Upper Roller, Used with # 1-1/2 and #1 Rails
		Guide, Upper Roller, Used with #2 Rails
9	FAA477Z1	Stop (anti-jumping for fillers)

See
SPL 14-AAA24180AW