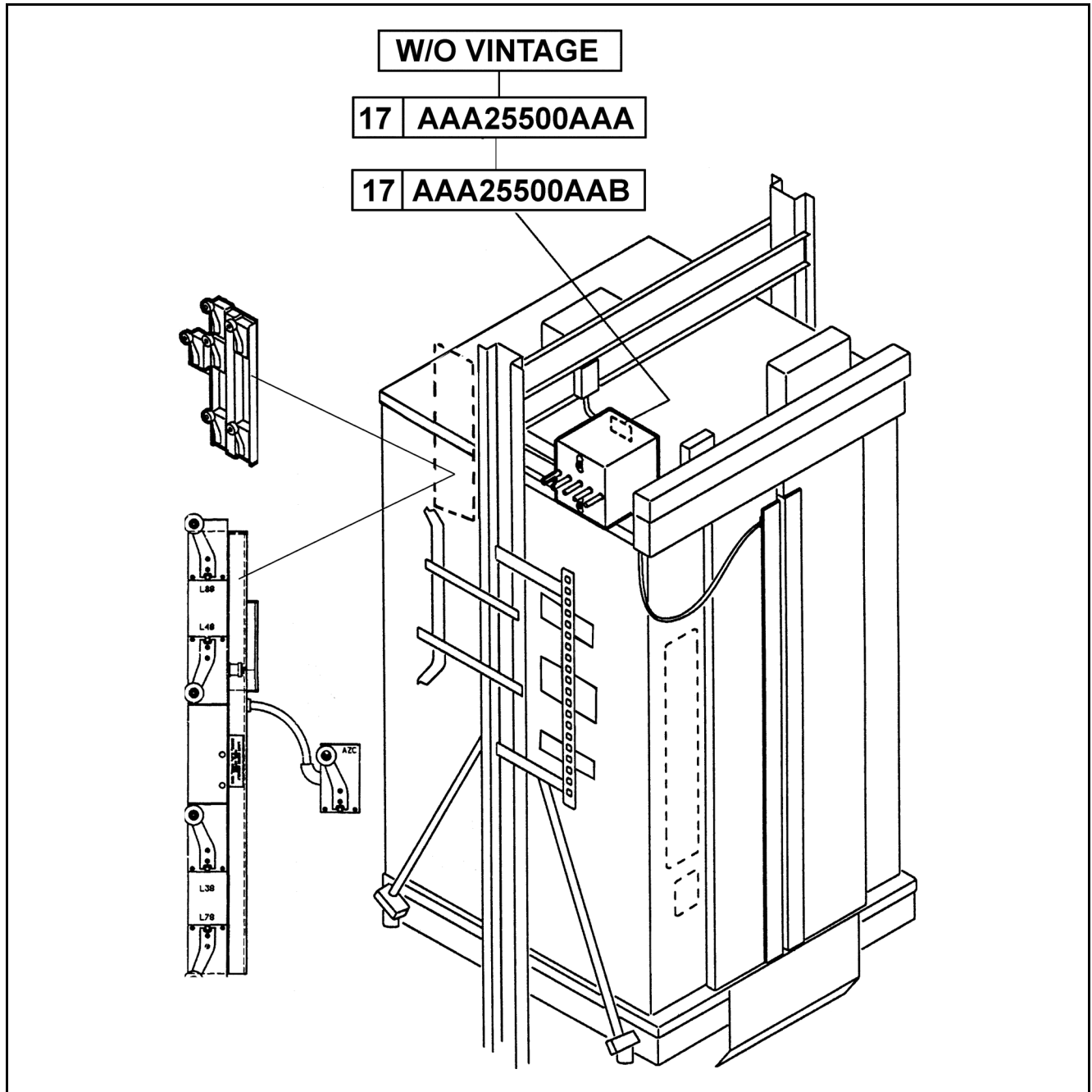


**Door Zone Leveling &
Limit Switch Assembly:
Types A**25500AAA &
A**25500AAB**

Spare Parts Leaflet
17-AAA25500AAA
April 25, 2005 / Page 1 of 5



Unpublished Work—© Otis Elevator Co.; 2005

OTIS

Safety First!

SERVICE ENGINEERING
Otis Elevator Company
Bloomfield, Connecticut USA

Leaflet Description

This leaflet lists service parts for the top-of-car junction / position reader box, and limit switch assemblies used on hydraulic systems. The junction / position reader box assemblies that are labeled as 17-A**25500AAB may have been built to drawings A**25500J, A**25500K, or A**25500Q.

Leaflet Revisions

Date Revised	Subject Matter Expert	Reason for Revision
April 25, 2005	John Dwyer	New SPL
---	---	---

Related Drawings

Drawing No.	Title	Drawing No.	Title
ACA25500AAA	Assembly, Top of Car Junction Box	AAA25500AAB	Assembly, Top of Car Junction Box
AAA25500J	Assembly, Top of Car Junction Box	AAA25500K	Assembly, Top of Car Junction Box
ABA25500K	Assembly, Top of Car Junction Box/Position Indicator and Limit switches	AAA25500Q	Assembly, Top of Car Junction Box / Position Reader

Related Documents

Document ID	Title
---	---
---	---

Subject Matter Expert

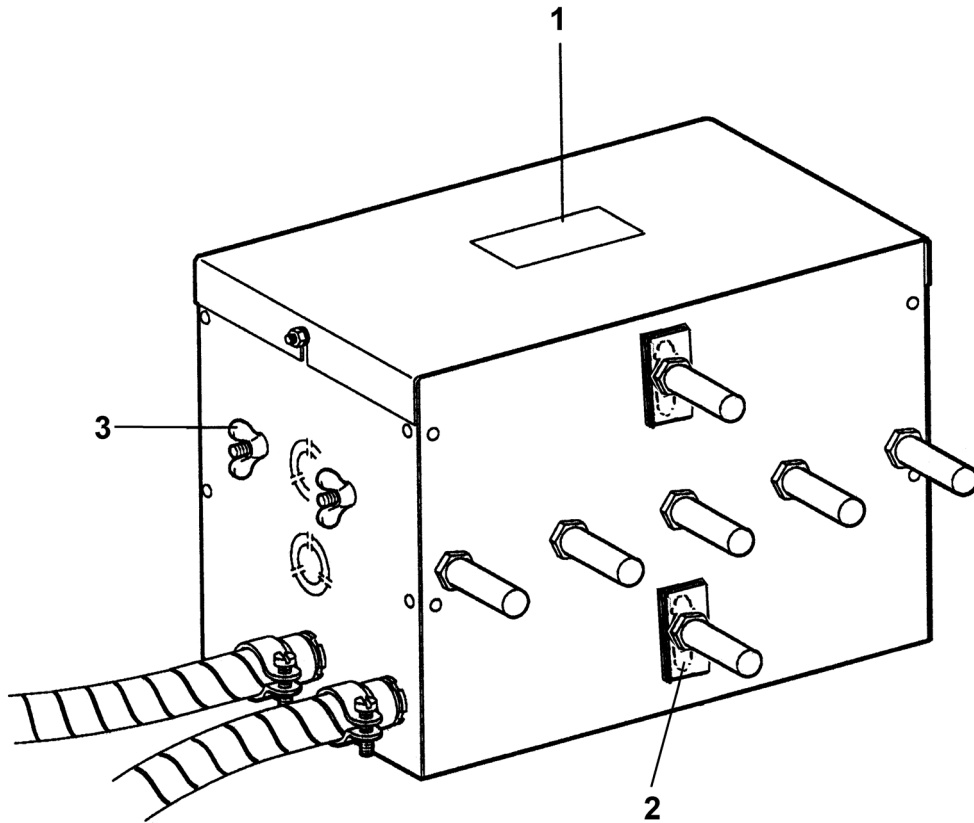
Name	Department
John Dwyer	OSC Service Engineering

About Spare Parts Leaflets...

This document lists the lowest replaceable units (LRUs) for the standard version of the product. The LRUs are chosen by a team of Otis associates representing engineering and manufacturing.

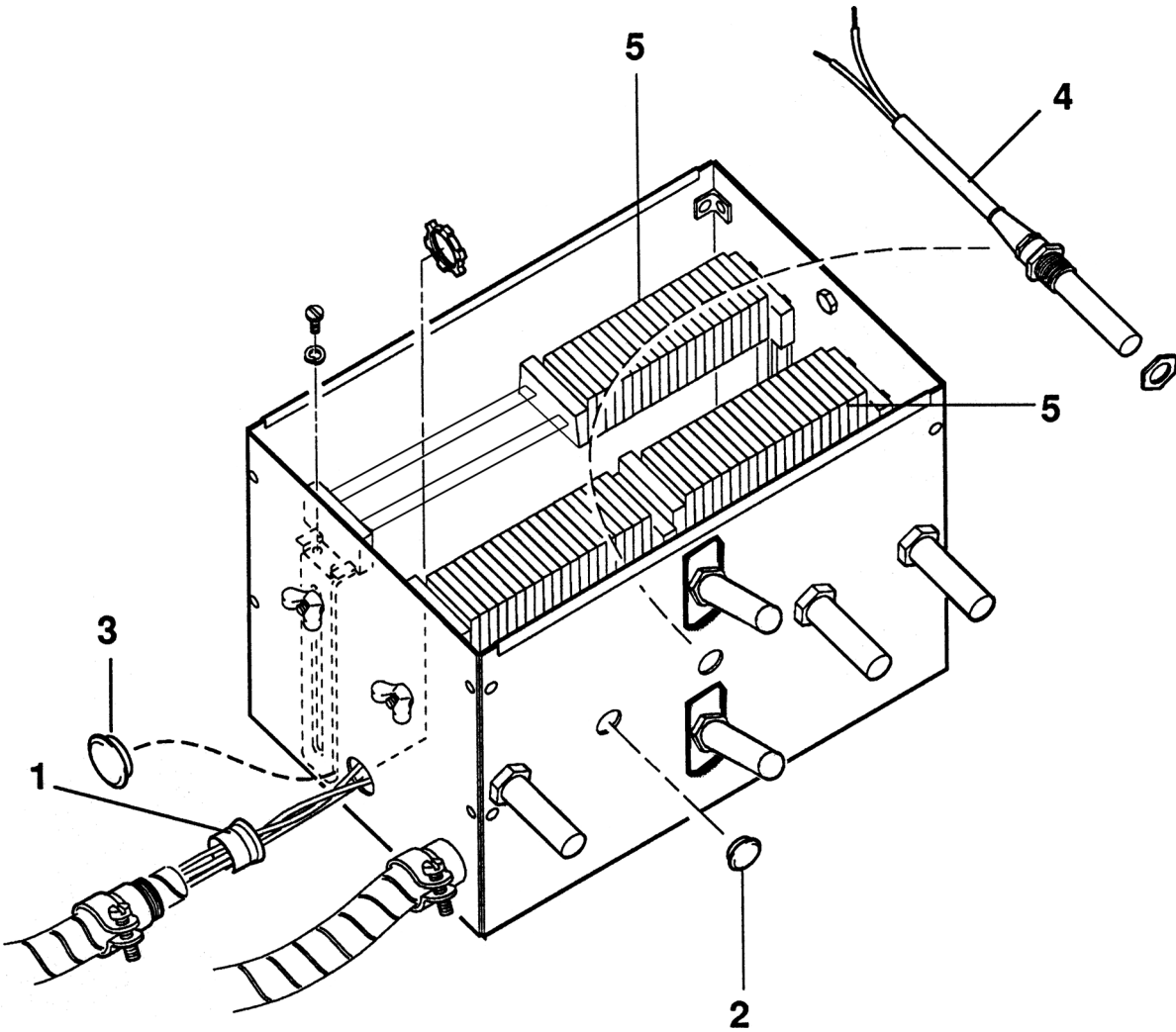
While goal of this document is to make parts identification as easy as possible, the document cannot be all-inclusive. Elevator and escalator contracts classified as "special" or "custom" are not addressed here. For such contracts, please refer to specified information, the contract folder, TIPs, Field Education Articles, Construction Letters, etc. for further information.

If you have any suggestions about this document, please contact the subject matter expert listed on this page.



NOTE: Sensor location may vary from those shown in the illustration.

ALL VINTAGES		
REF. No.	PART No.	DESCRIPTION
1	102LV2	Label, Caution
2	255XA15	Plate, Cover
3	72FD5	Wingnut

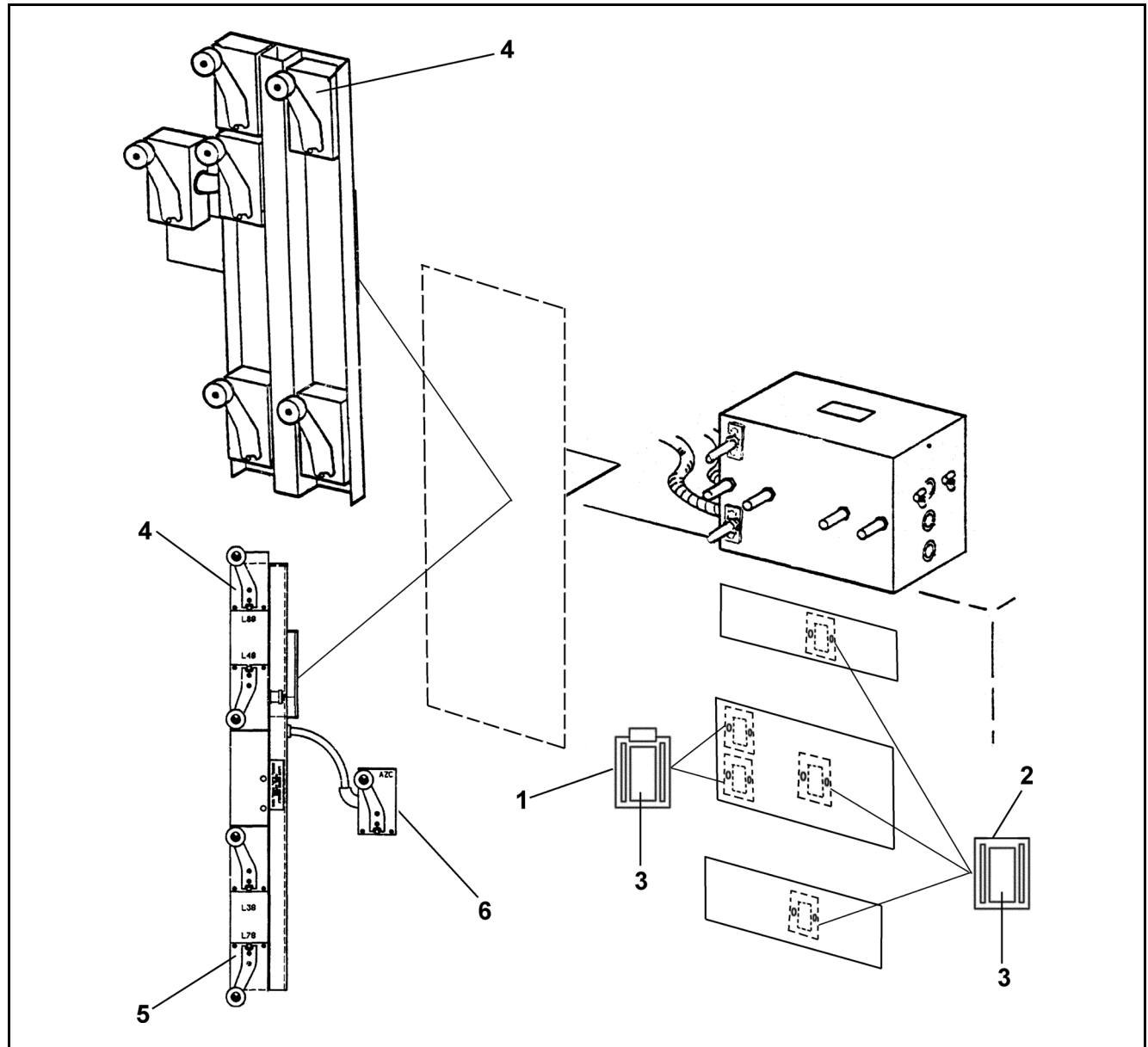


ALL VINTAGES

REF. No.	PART No.	DESCRIPTION
1	334AL2	Bushing, Insulating
2	444BL1	Plug, Outer Diameter = 0.81 in.
3	444BL4	Plug, Outer Diameter = 1.16 in.
4	YYF0177BP4 FAA177DC1	Switch
5	AAA00303AAB001	Terminal Block (containing 20 multi-stack terminal blocks)
	AAA00303AAB002	Terminal Block (containing 40 multi-stack terminal blocks)

Limit Switch Assembly

17-AAA25500AAA



ALL VINTAGES

REF. No.	PART No.	DESCRIPTION
1	FO396AS1	Holder, Magnet, Door Zone and Leveling
2	FO396AT1	Holder, Magnet, Floor Stop
3	FO233B1	Magnet
4	A6098B36 AAA6098NM4	Switch, Limit / Access, Double-Pole Breaking
5	AAA6098NM3	
6	AAA6098NM2	Switch, Limit / Access, Single-Pole Breaking