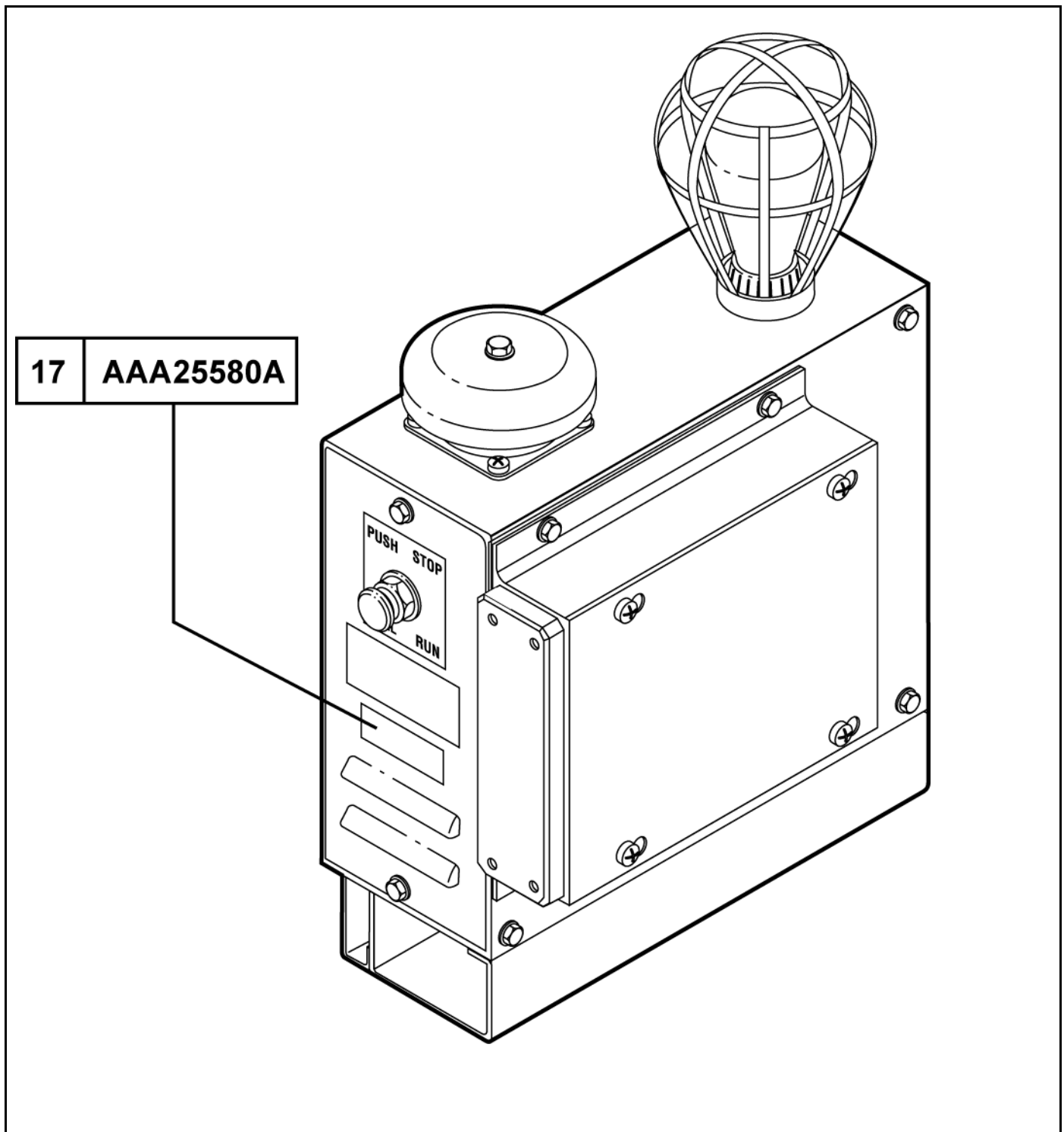


**Top-of-Car
Integration Box**

Spare Parts Leaflet

17-AAA25580A

September 28, 2006/ Page 1 of 5



Unpublished Work—© Otis Elevator Co.; 2006

OTIS

Safety First!

SERVICE ENGINEERING

Otis Elevator Company

Bloomfield, Connecticut USA

Leaflet Description

This leaflet describes the lowest replaceable units (LRU) for the AAA25580A top-of-car interface box assembly.

Leaflet Revisions

Date Revised	Subject Matter Expert	Reason for Revision
March 1, 1999	Burt Greenfield	Addition of new model.
October 1, 2000	John Dwyer	Removed model added in previous revision.
September 28, 2006	John Dwyer	Update emergency stop switch part number.

Related Drawings

Drawing No.	Title	Drawing No.	Title
AAA25580A	Assembly and Arrangement Top-of-Car Integration Box	---	---
---	---	---	---

Related Documents

Document ID	Title
SPL 17-AAA25580S	Top-of-Car Integration Box for Hydraulic System
SPL 17-AAA25580Q	Top-of-Car Integration Box for Traction System
SPL 20-AAA24591B/C/D	Lambda II [®] Door Detector

Subject Matter Expert

Name	Department
John Dwyer	OSC Electrical Engineering

About Spare Parts Leaflets...

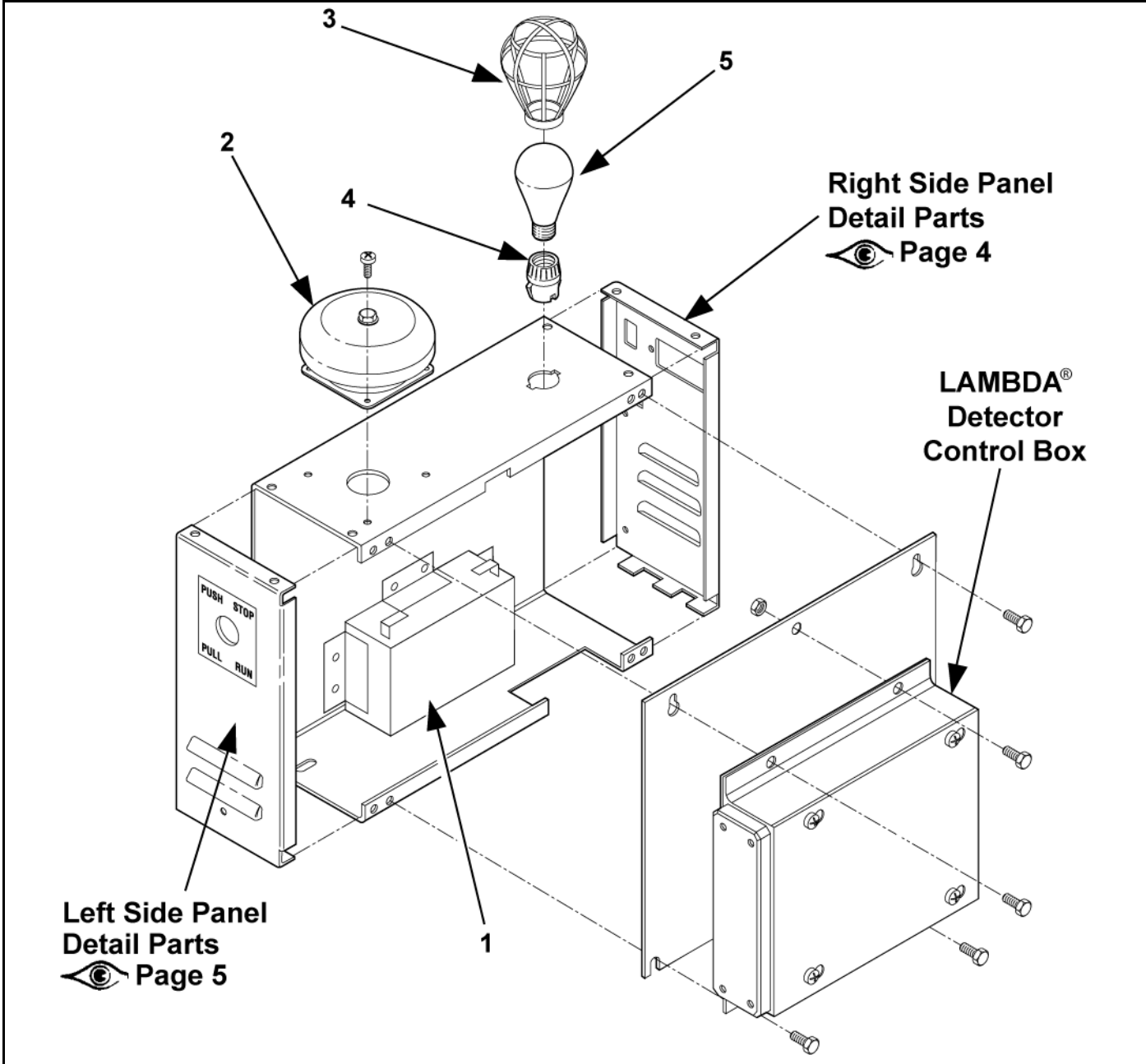
This document lists the lowest replaceable units (LRUs) for the standard version of the product. The LRUs are chosen by a team of Otis associates representing engineering and manufacturing.

While goal of this document is to make parts identification as easy as possible, the document cannot be all-inclusive. Elevator and escalator contracts classified as "special" or "custom" are not addressed here. For such contracts, please refer to specified information, the contract folder, TIPs, Field Education Articles, Construction Letters, etc. for further information.

If you have any suggestions about this document, please contact the subject matter expert listed on this page.

Top-of-Car Integration Box

17-AAA25580A

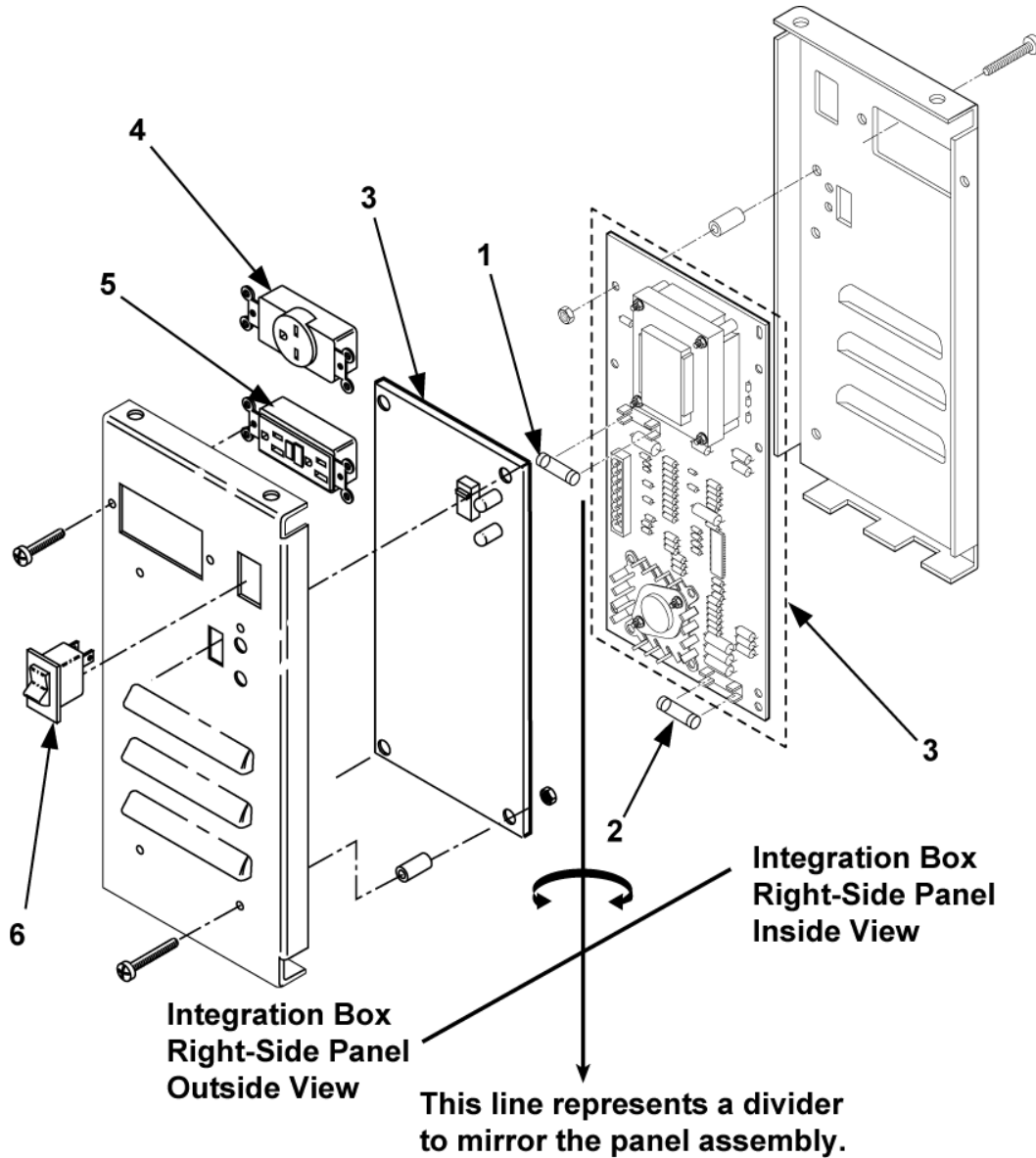


Left Side Panel
Detail Parts
Page 5

Right Side Panel
Detail Parts
Page 4

LAMBDA®
Detector
Control Box

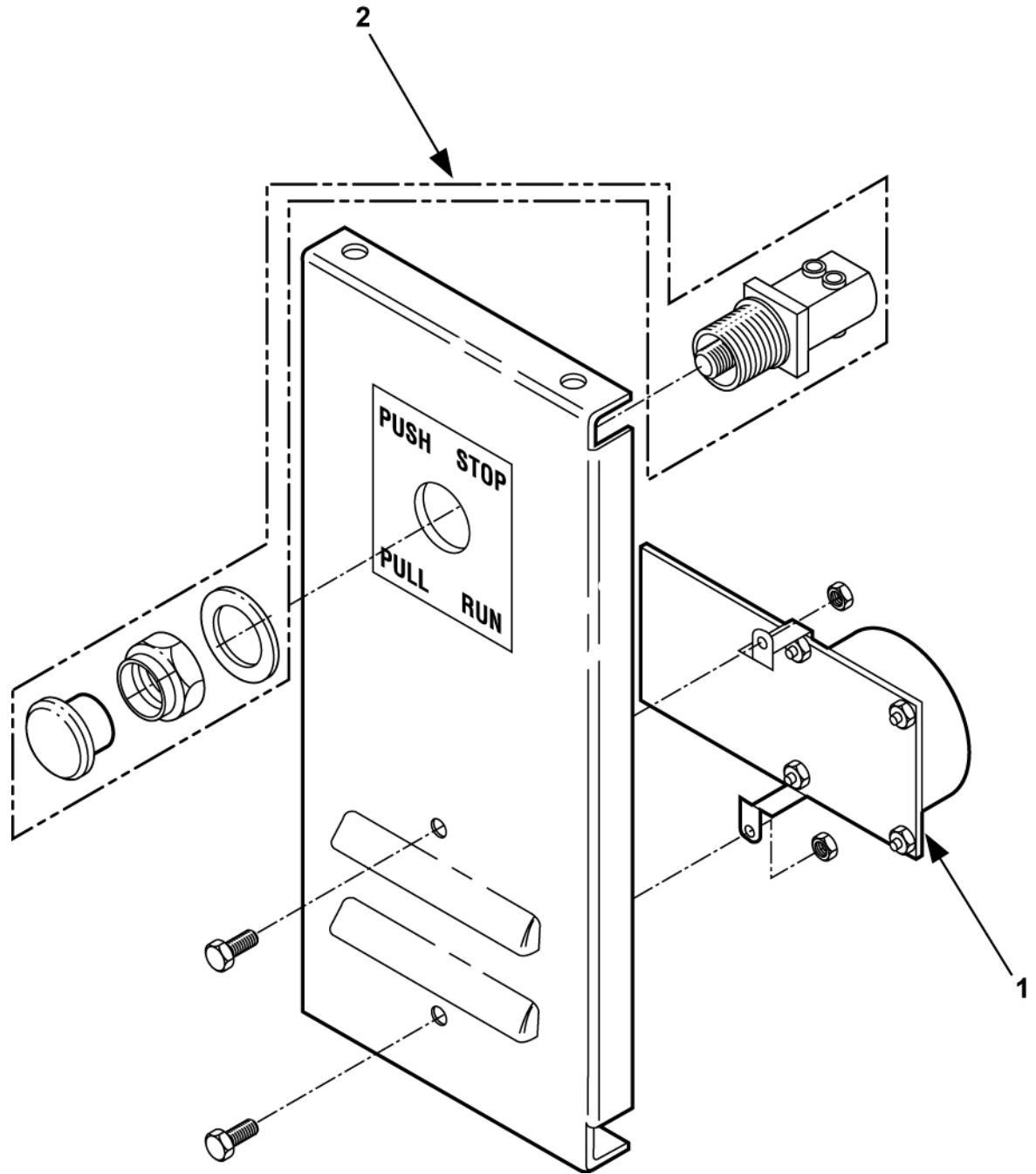
AAA25580A		
REF. No.	PART No.	DESCRIPTION
1	AAA718E6	Battery, Rechargeable
2	AAA311E3	Bell, 6 in., 6 Volts DC (Canada only)
	AAA311E1	Bell, 6 in., 6 Volts DC (except Canada)
3	AAA384ABX1	Guard, Lamp
4	AAA618BD1	Holder, Lamp
5	6599D14	Lamp, 125 V, 100 W
	6599D15	Lamp, 250 V, 100 W
6	---	Lambda II® Door Detector, SPL 20- AAA24591B/C/D



REF. No.	AAA25580A PART OR M.L.	DESCRIPTION
1	AAA375BY15	Fuse, 0.5 A, Time-Delay (XF1, NAA)
	AAA375BY2	Fuse, 0.25 A, Time-Delay (XF1, International)
2	AAA375CF5	Fuse, 4.0 A, 125 V (XF2, NAA)
	AAA375CF6	Fuse, 4.0 A, 250 V (XF2, International)
3	AAA26800TU1	PC Board, Emergency Lighting (NAA)
	AAA26800TU2	PC Board, Emergency Lighting (International)
4	AAA648C2	Receptacle, 15 A, 250 V (International only)
5	641A4	Receptacle, Ground Fault Current Interrupter (GFCI, NAA)
6	477DM4	Switch, Rocker, 1-Pole
	AAA177EN6	

Top-of-Car Integration Box

17-AAA25580A



AAA25580A		
REF. No.	PART OR M.L.	DESCRIPTION
1	GCA23550B1	PC Board, Gong w/o Mounting Brackets
2	AAA635L4 AAA635L13	Switch, Emergency Stop