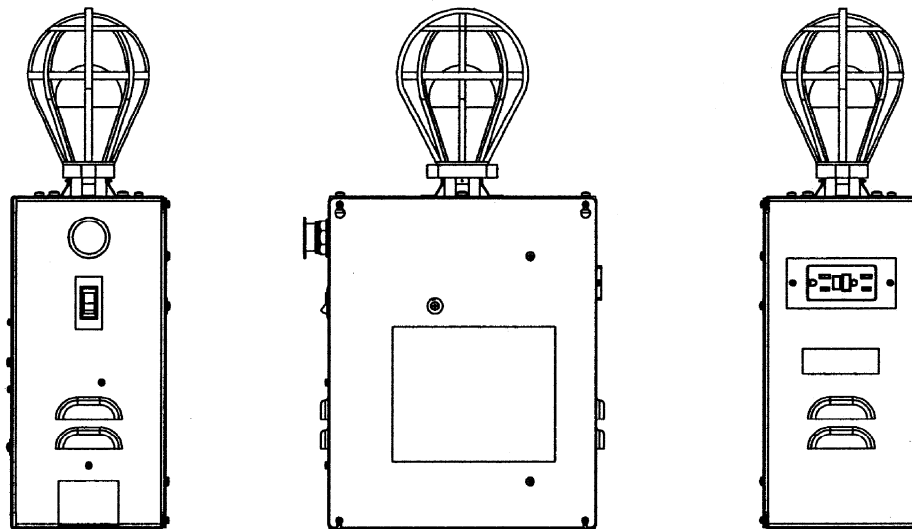


Rear Top-of-Car  
Integration Box  
(w/Internal Door Detector)

Spare Parts Leaflet  
17-AAA25580AT

February 8, 2012 / Page 1 of 5

17 R-AAA25580AT



Unpublished Work—© Otis Elevator Co.; 2012

**OTIS**

Safety First!

SERVICE ENGINEERING  
Otis Elevator Company  
Bloomfield, Connecticut USA

## Leaflet Description

The AAA25580AT rear top-of-car integration box was designed to fit on the Gen2® RSL car top and house various discrete components and printed circuit boards. This box is used when rear doors are supplied.

## Leaflet Revisions

Date Revised	Subject Matter Expert	Reason for Revision
November 10, 2003	Brian Mierzejewski	New SPL
November 3, 2004	Brian Mierzejewski	Ref. 1 on page 3, the part number was changed to GCA23550B1
September 14, 2006	John Dwyer	Ref. 10 on page 3, the p/n 177DM1 was superseded by p/n AAA177EN6
November 25, 2009	Starr Walker and Matt Fournier	Added additional voltages.
December 23, 2009	Starr Walker and Matt Fournier	Added NOTE on p. 3 for references 2 and 5.
April 14, 2010	Sohaib Shaikh	Added new pages 4 and 5.
July 21, 2010	Brian Mierzejewski	Changed part number 641A4 to 641A3.
February 8, 2012	Rich Pustelniak and Sohaib Shaikh	Replaced LAMBDA-3D controller AAA26800AGS1 with AAA26800ARV1

## Related Drawings

Drawing No.	Title	Drawing No.	Title
AAA25580AT	Assembly and Arrangement, Rear Top of Car Box with Internal 30 VDC LAMBDA® III	---	---

## Related Documents

Document ID	Title
---	---

## Subject Matter Expert

Name	Department
Sohaib Shaikh	OSC Service Engineering

## About Spare Parts Leaflets...

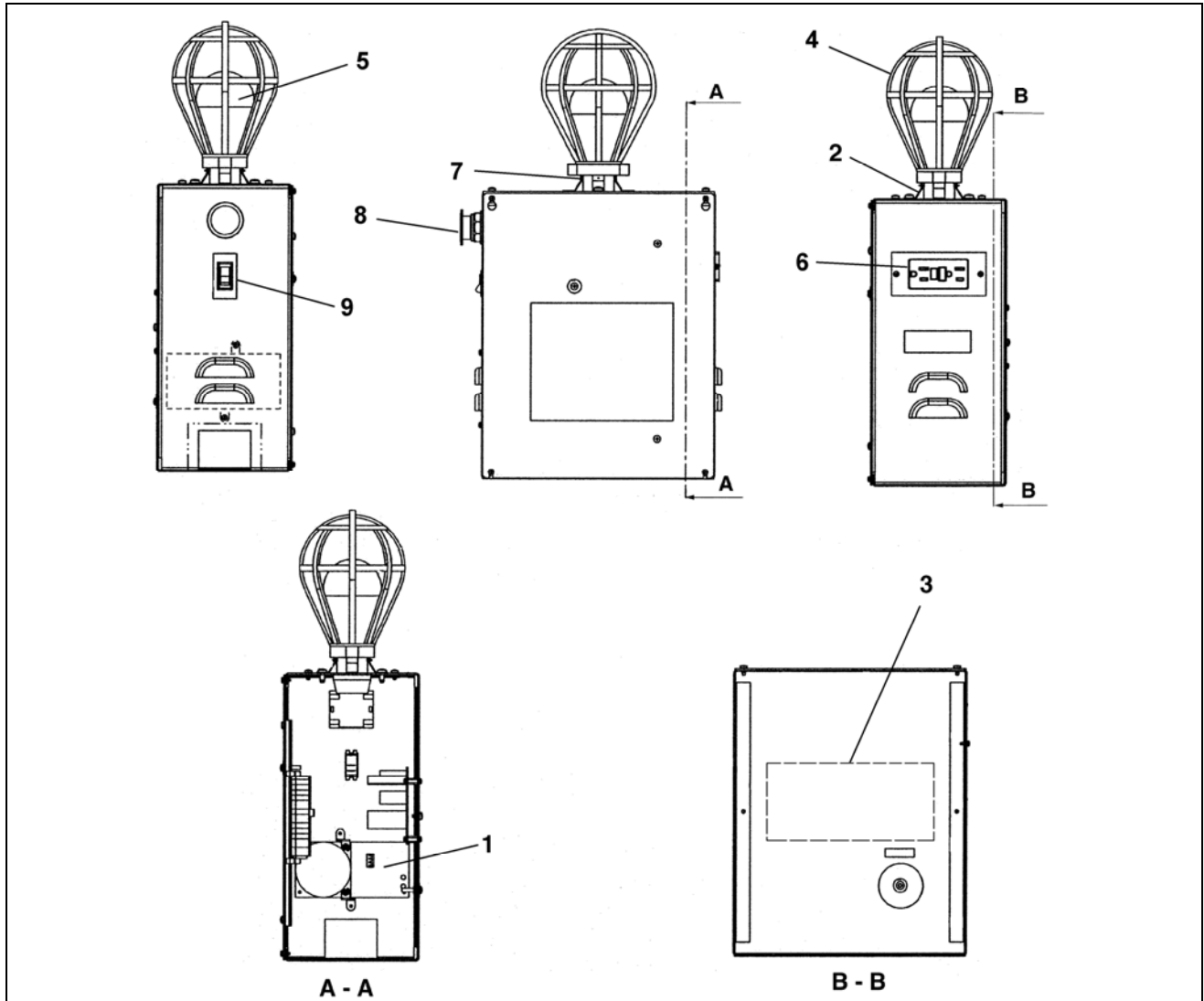
This document lists the lowest replaceable units (LRUs) for the standard version of the product. The LRUs are chosen by a team of Otis associates representing engineering and manufacturing.


While goal of this document is to make parts identification as easy as possible, the document cannot be all-inclusive. Elevator and escalator contracts classified as "special" or "custom" are not addressed here. For such contracts, please refer to specified information, the contract folder, TIPs, Field Education Articles, Construction Letters, etc. for further information.

If you have any suggestions about this document, please contact the subject matter expert listed on this page.

# Rear Top-of-Car Integration Box

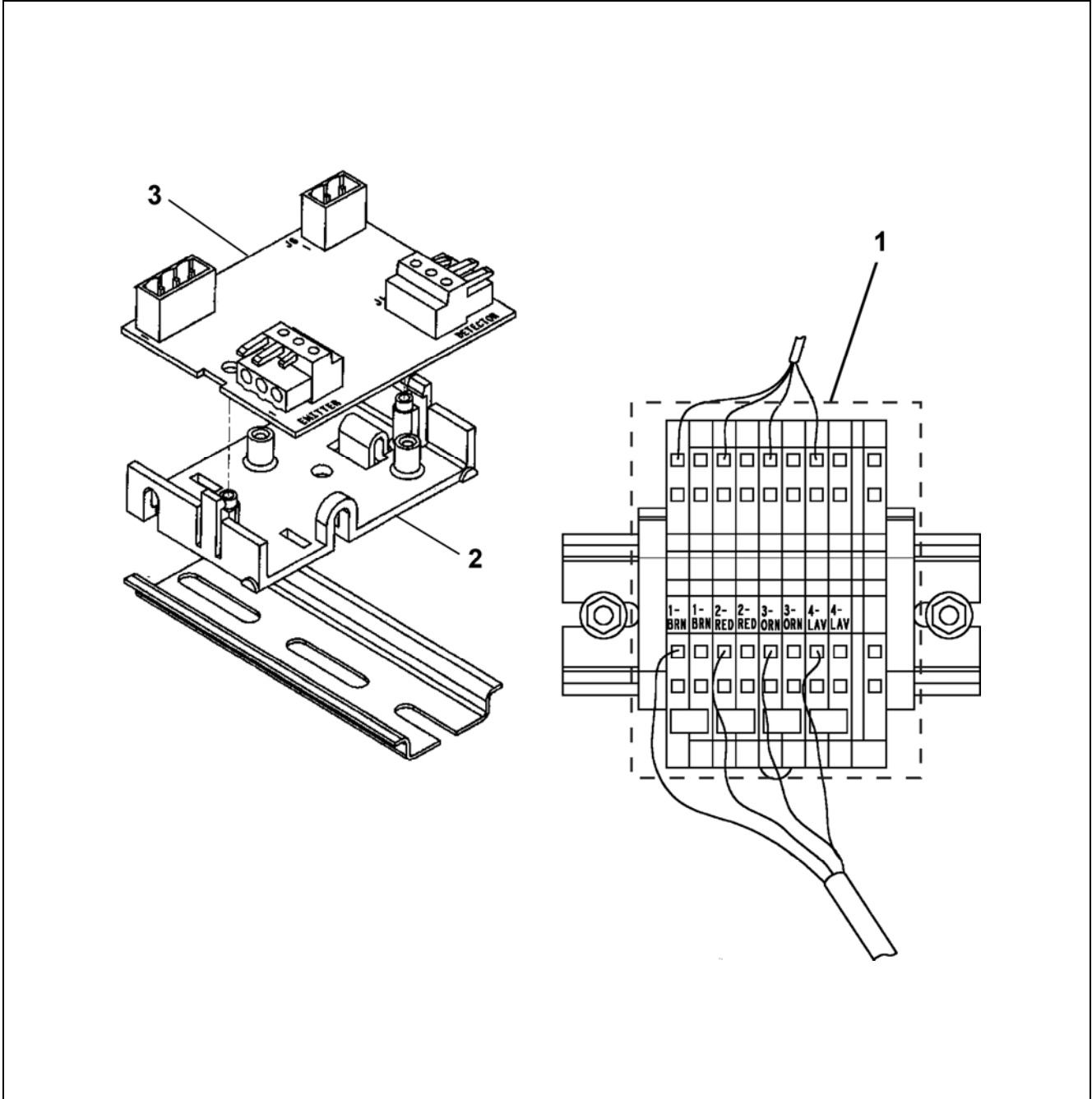
17-AAA25580AT



REF. No.	PART No.	DESCRIPTION
	AAA25580AT	
1	GCA23550B1	Board, Gong (not on all units; not shown)
2	AAA336MM1	Clamp, Lamp Guard (see <b>NOTE</b> )
3	---	Controller, LAMBDA Door Detector,  pp. 4 and 5
4	AAA384ABX1	Guard, Lamp (see <b>NOTE</b> )
5	6599D14	Lamp, 125 V, 100 W, Lighting Supply = 110 V
	6599D15	Lamp, 250 V, 100 W, Lighting Supply = 220 V
6	641A3	Receptacle, GFCI, Lighting Supply = 110 V
	AAA648C4	Receptacle, 250 V, Lighting Supply = 220 V
7	AAA618BD1	Socket, Electrical
8	AAA635L12	Switch
9	477DM4	Switch, Toggle
	AAA177EN6	

**NOTE:** Part number AAA336MM1 is used with p/n AAA384ABX1.

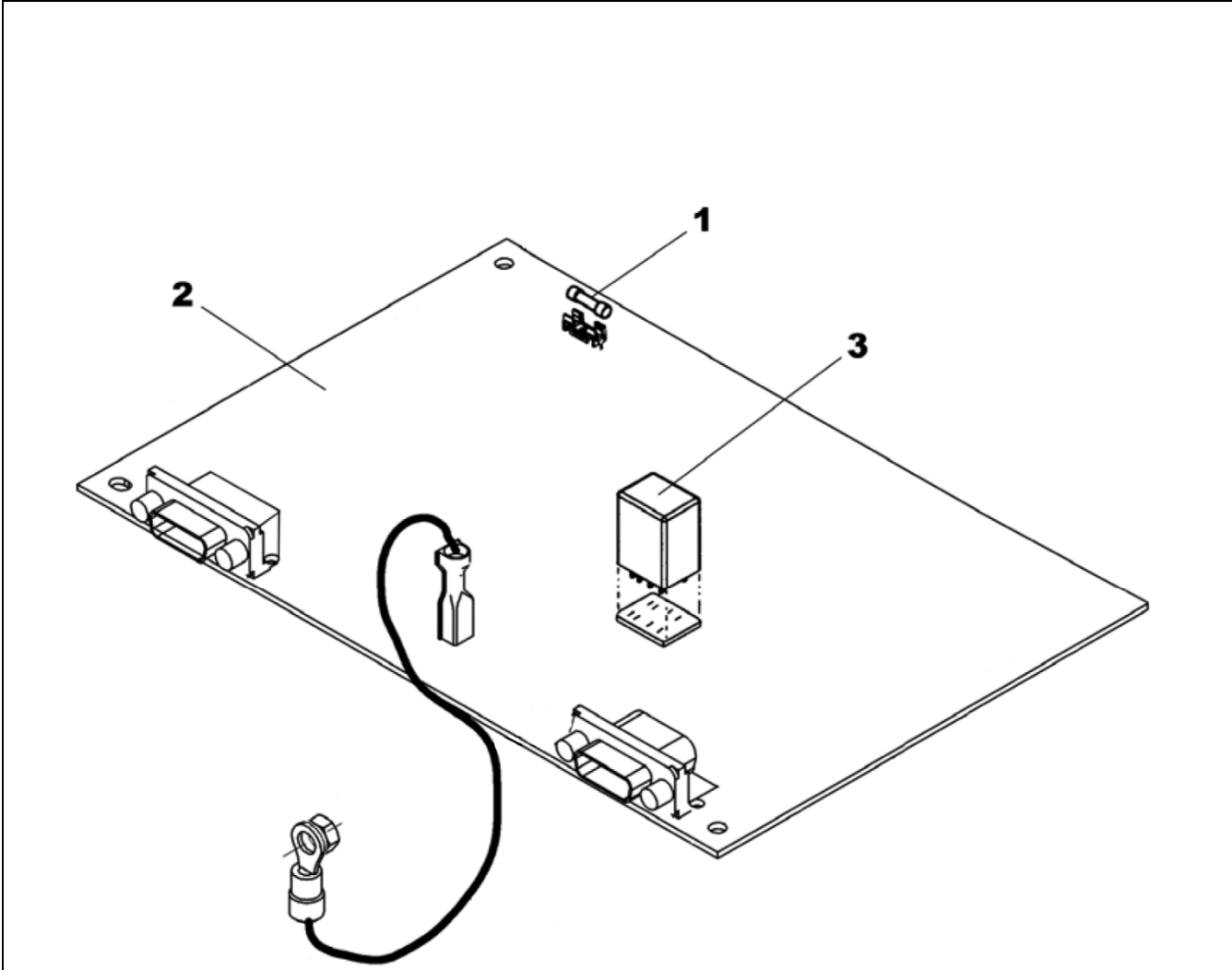
# Rear TOC Integration Box Lambda LC Components



REF. No.	PART No.	DESCRIPTION
1	AAA21303CY2	Assembly, Terminal Block
2	AAA180FE1	Holder, Molded
3	AAA26800APY1	LAMBDA LC PC Board

# Rear TOC Integration Box Lambda III Components

17-AAA25580AT



REF. No.	PART No.	DESCRIPTION
	AAA25580AT	
1	AAA375BY15	Fuse, 0.5 Amp, 115 VAC
2	<del>AAA26800AGS1</del> AAA26800ARV1	PC Board, 30 VDC
3	AAA613CZ21	Relay, 24 VDC for PC Board A**26800AGS1
	AAA613DB7	Relay, 24 VDC for PC Board A**26800ARV1