

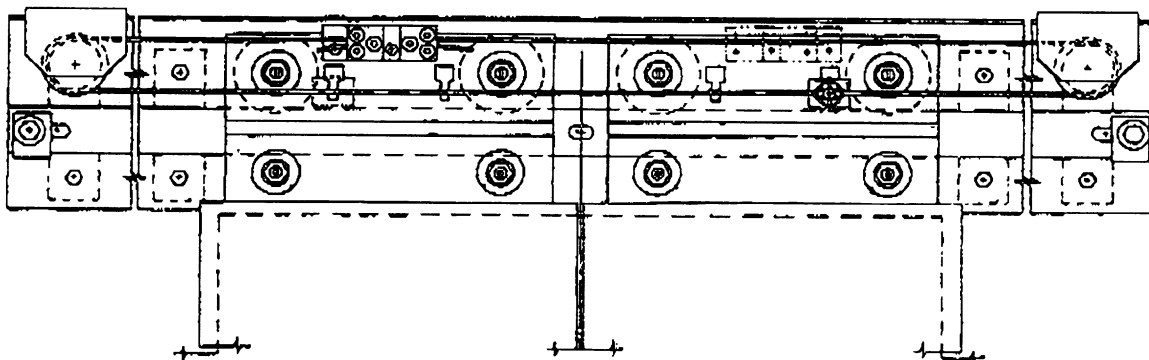
**Integral Hanger Car Door
Systems Center-Opening,
Single-Slide, Two-Speed**

**Spare Parts Leaflet
19-6178CA**

February 10, 2021 / Page 1 of 11

Center-Opening
System Shown

W/O
VINTAGE



Post 1977 Production

OTIS

This document does not contain any
technical data subject to EAR or ITAR

**SERVICE ENGINEERING
Otis Elevator Company
Bloomfield, Connecticut USA**

Unpublished Work—© Otis Elevator Co.; 2021

Leaflet Description

This SPL covers car door system components used primarily when QL door operators were specified on the elevator in question. This leaflet supersedes some information in SPL C-3042. For applied hanger assemblies, see SPLs C-1010 & 19-6178CH. For hoistway car door hanger system assemblies, see component code 25 SPLs. For car door systems post 2000, see SPLs 19-AAA6178CS & 19-AAA6178CT.

Leaflet Revisions

Date Revised	Subject Matter Expert	Reason for Revision
September 1, 2000	Duane Stupienski	New Leaflet, Initial Release
February 10, 2021	Pete Kelley	Added refresh kit part numbers

Related Drawings

Drawing No.
6178CA
6178CB
6178CC

Related Documents

Document ID	Title
SPL 19-6178CH	Applied Hanger Car Door Systems
SPL 19-AAA6178CS	Integral Hanger Car Door Systems (Post 2000)
SPL 19-AAA6178CT	Applied Hanger Car Door Systems (Post 2000)
TIP 21.2-4	Replacements for 456CX4 Door Hanger Roller
TIP 23.3-3	Door Hanger Rollers—Roller Profile Squeaking Roller Problem
TIP 21.2-5	Welded Aircord Sheave Bracket Replacement

Subject Matter Expert

Name	Department
Pete Kelley	OSC Service Engineering

About Spare Parts Leaflets...

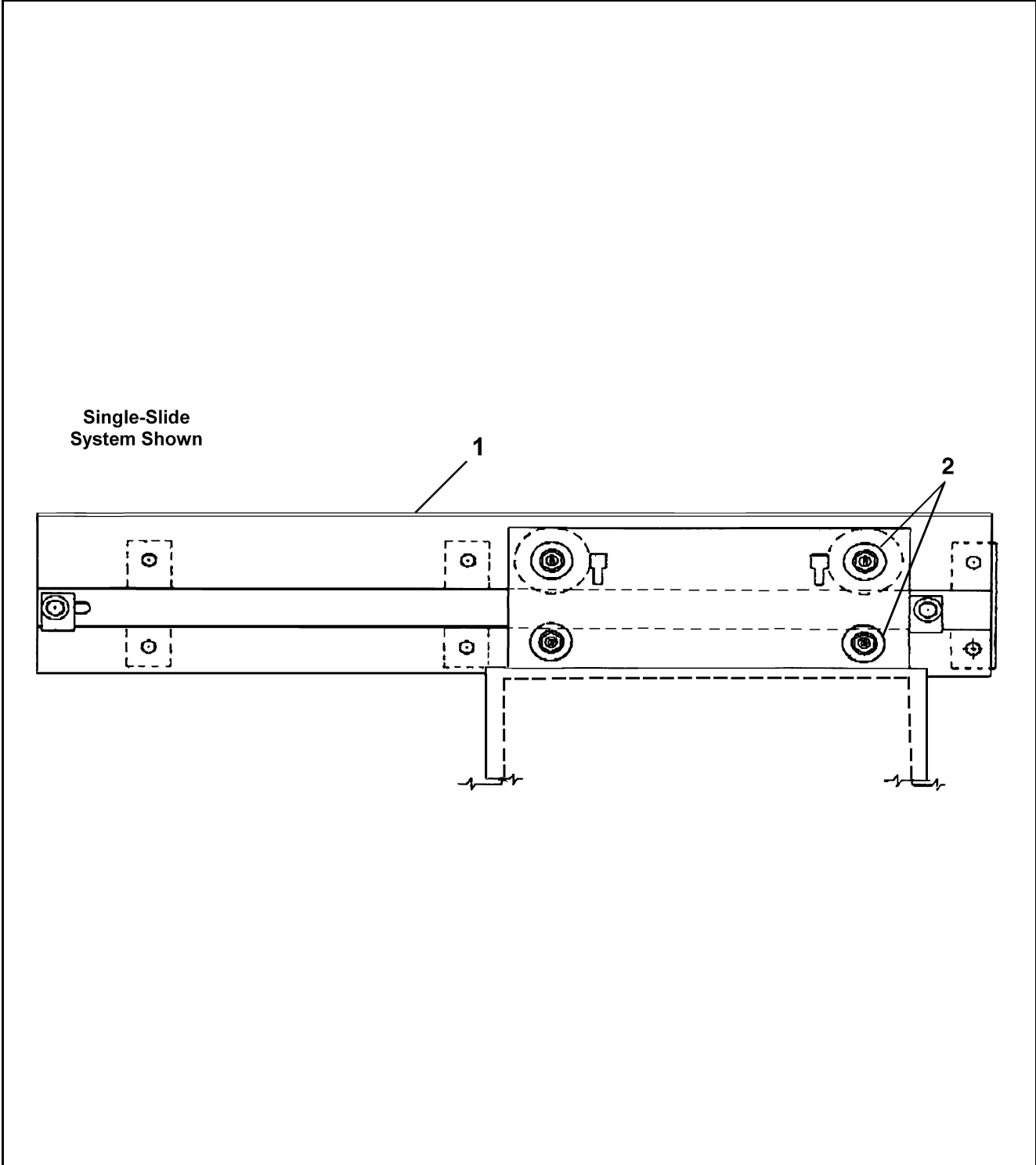
This document lists the lowest replaceable units (LRUs) for the standard version of the product. The LRUs are chosen by a team of Otis associates representing engineering and manufacturing.

While goal of this document is to make parts identification as easy as possible, the document cannot be all-inclusive. Elevator and escalator contracts classified as "special" or "custom" are not addressed here. For such contracts, please refer to specified information, the contract folder, TIPs, Field Education Articles, Construction Letters, etc. for further information.

If you have any suggestions about this document, please contact the subject matter expert listed on this page.

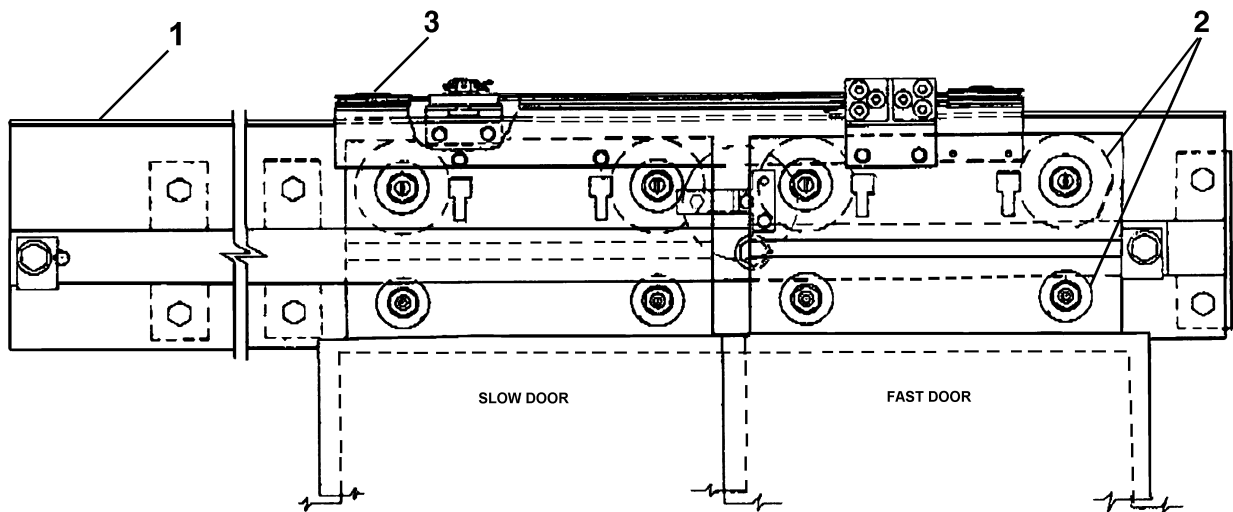
Type 6178CA/CC Single-Slide and Center-Opening Door Components

19-6178CA






REF. NO.	PAGE	DESCRIPTION
1	p. 5	Header and Track Assembly
2	p. 10	Door Hanger Parts

Type 6178CB Two-Speed Door Components

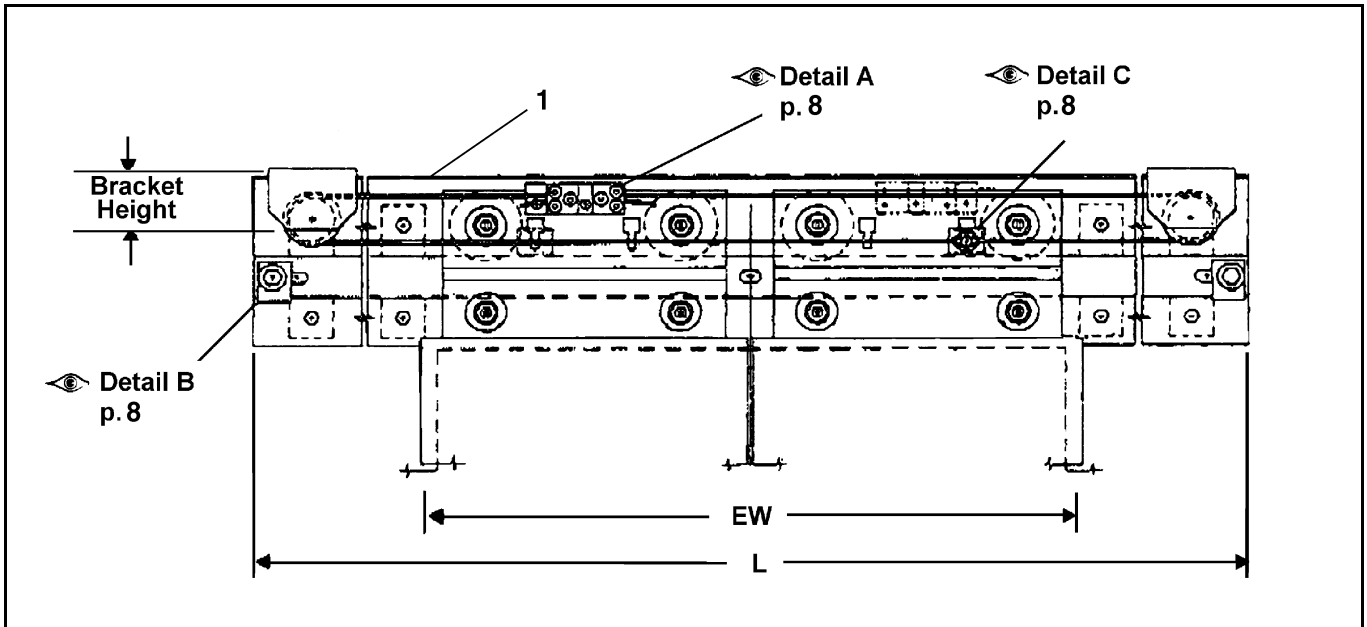


 **Shown**

REF. NO.	PAGE	DESCRIPTION
1	 p. 9	Header and Track Assembly
2	 p. 10	Door Hanger Parts
3	 p. 11	Two-Speed Aircord Drive Assembly

Type 6178CE Single-Slide & Center-Opening Header/Track Assembly

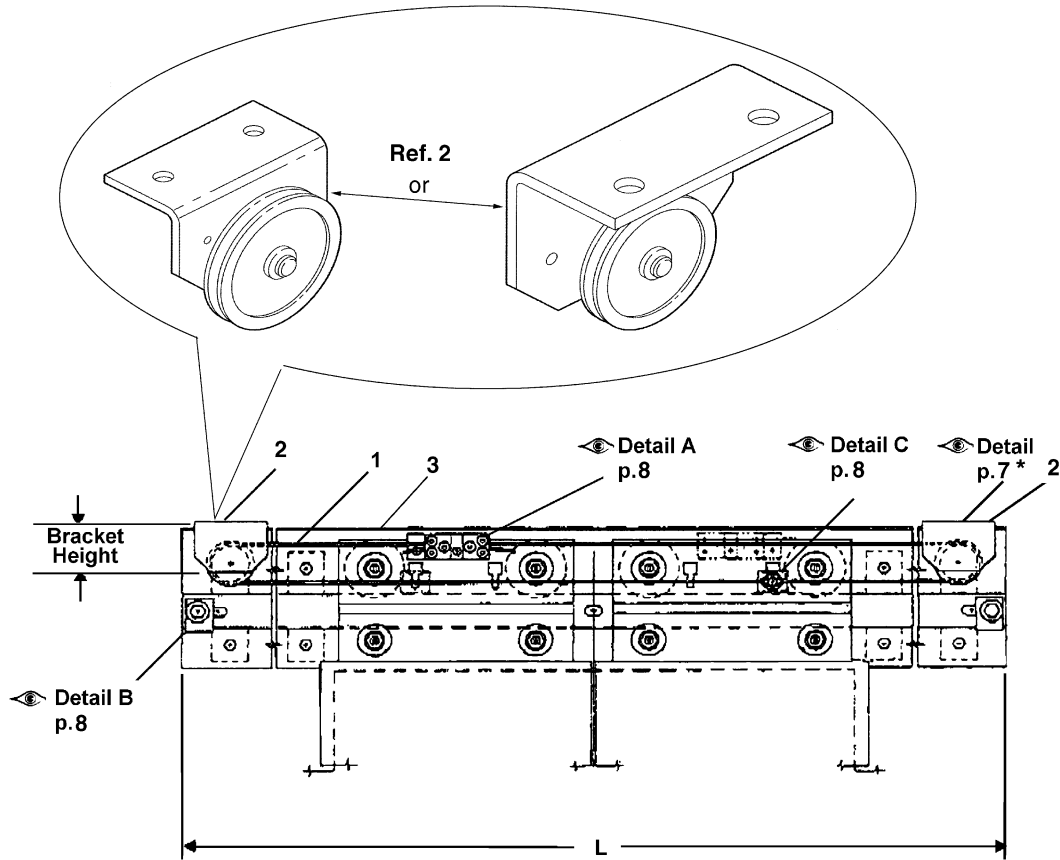
19-6178CA



W/O VINTAGE				
REF. NO.	PART or ML	DESCRIPTION	EW (in.)	HAND
1	6178CE1	Assembly, Track, Single-Slide Door, 70.7 L	32	---
	6178CE6	Assembly, Track, Single-Slide Door, 73.7 L	32	↖
	6178CE7	Assembly, Track, Single-Slide Door, 73.7 L	32	↖
	6178CE8	Assembly, Track, Single-Slide Door, 85.7 L	32	↖
	6178CE9	Assembly, Track, Single-Slide Door, 85.7 L	32	↖
	6178CE2 6178CE20	Assembly, Track, Single-Slide Door, 78.7 L	36	---
	6178CE10	Assembly, Track, Single-Slide Door, 85.7 L	36	↖
	6178CE11	Assembly, Track, Single-Slide Door, 85.7 L	36	↖
	6178CE3 6178CE21	Assembly, Track, Single-Slide Door, 90.7 L	42	---
	6178CE12	Assembly, Track, Single-Slide Door, 90.7 L	42	↖
	6178CE13	Assembly, Track, Single-Slide Door, 90.7 L	42	↖
	6178CE14	Assembly, Track, Single-Slide Door, 97.7 L	42	↖
	6178CE15	Assembly, Track, Single-Slide Door, 97.7 L	42	↖
	6178CE17	Assembly, Track, Center-Opening Door, 77.5 L	36	---
	6178CE18	Assembly, Track, Center-Opening Door, 85.7 L	36	---
	6178CE19	Assembly, Track, Center-Opening Door, 97.7 L	36	---
	6178CE4	Assembly, Track, Center-Opening Door, 89.3 L	42	---
	6178CE16	Assembly, Track, Center-Opening Door, 97.7 L	42	---
	6178CE5	Assembly, Track, Center-Opening Door, 101.3 L	48	---

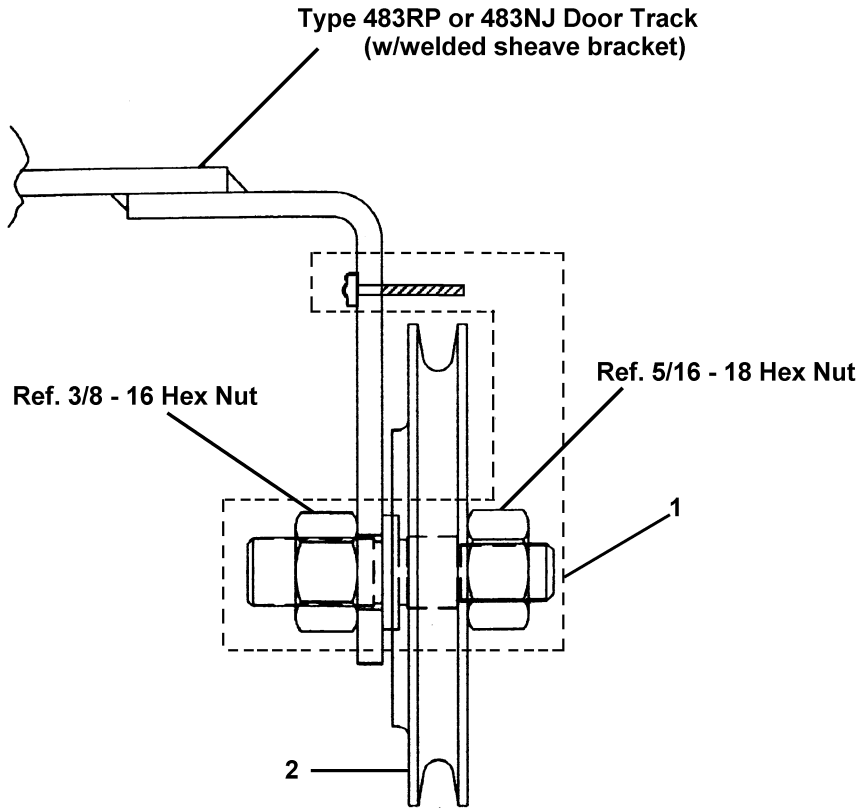
(Continued on Next Page)


**Single-Slide & Center-Opening
Header/Track Assembly**




W/O VINTAGE					
REF. NO.	PART or ML	DESCRIPTION			
1	174AS995	Aircord, <table border="1" style="display: inline-table; vertical-align: middle;"><tr><td>ORDER</td></tr><tr><td> </td></tr><tr><td> </td></tr></table> Per Foot	ORDER		
ORDER					
2	B316CCB2	Bracket, Sheave, 2.44 in. H (used prior to 1996), p. 7 (sheave facing out)			
	AAA316FWQ2	Bracket, Sheave, Center-Opening Track, 2.81 in. H (sheave facing in)			
*	AAA24430AT5	Kit, Refresh, Single-Slide. Includes: Hanger and Upthrust Rollers, Gibs, Bumpers			
*	AAA24430AT6	Kit, Refresh, Center-Opening. Includes: Hanger and Upthrust Rollers, Gibs, Bumpers, Aircord, Pulleys			
3	1S-50AKL-106	Track, Shape Only, L = 106 in. (Field to Cut & Drill as Needed). If Specific Track is Desired, <table border="1" style="display: inline-table; vertical-align: middle;"><tr><td>ORDER</td></tr><tr><td> </td></tr><tr><td> </td></tr></table> p. 5, ref. 1	ORDER		
ORDER					

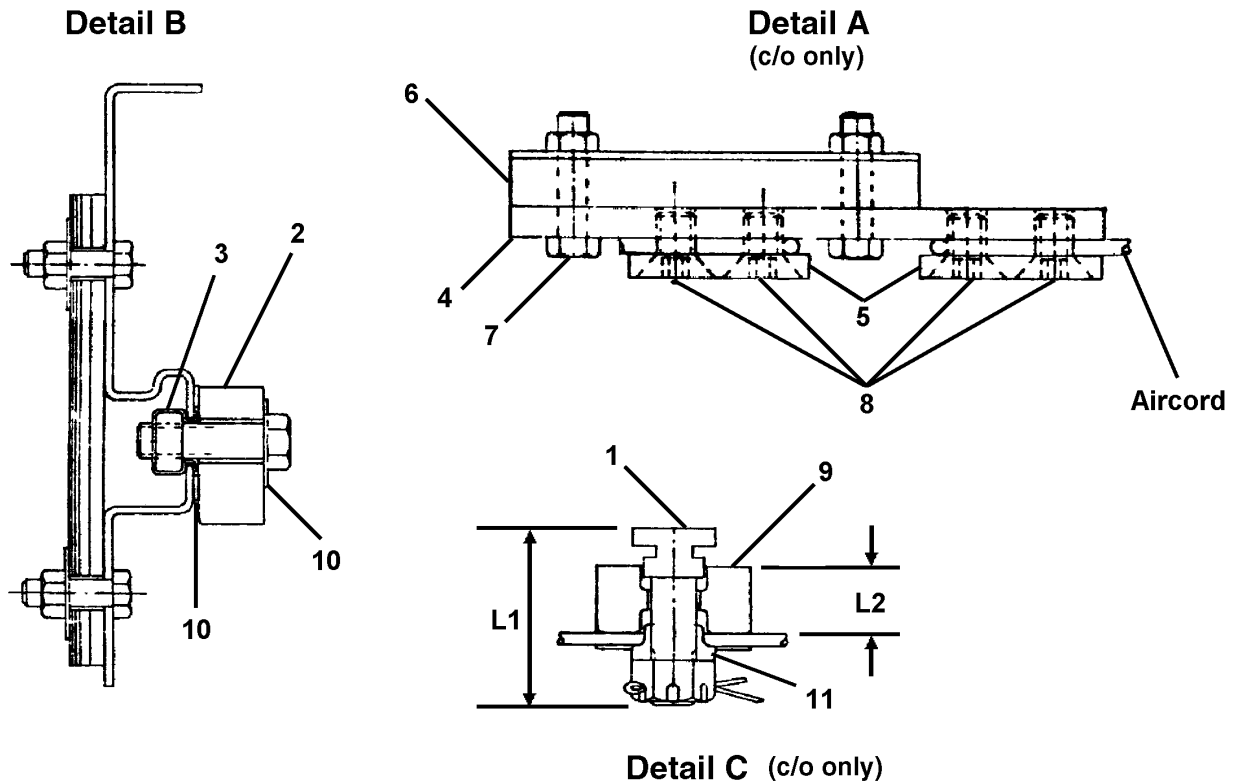
* Part not shown



W/O VINTAGE		
REF. No.	PART No.	DESCRIPTION
1	AAA81JF1	Kit, Pin, Removable, Service Replacement,  Note
2	265BD2	Sheave, Aircord

NOTE: Replaces pulley assembly on formerly welded bracket design when ordered w/ Ref. 2,  TIP 21.2-5.

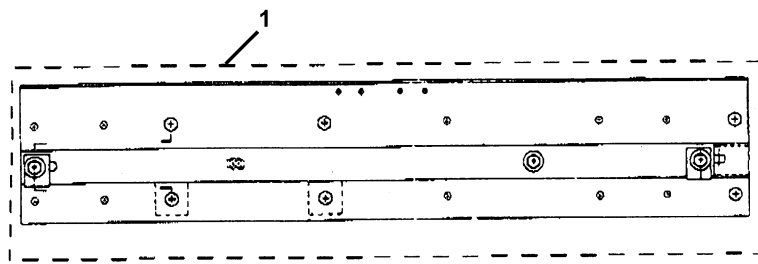
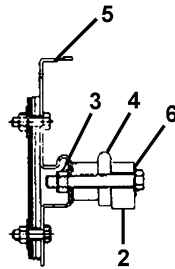
**Single-Slide & Center-Opening
Header/Track Components**



REF. NO.	W/O VINTAGE &		DESCRIPTION
	1977-1986 PROD.	1987-PRESENT PROD.	
	PART or ML		
1	65CN1	---	Bolt, Slotted Hanger, 1.83 in. L1
	---	65CN2	Bolt, Slotted Hanger, 1.31 in. L1
2	320AB8		Bumper, Rubber
3	72DJ2		Nut, Grip
4	386BKM1		Plate, Hitch
5	386AKS1		Plate, Clamp (two used per assembly)
6	A299G5		Plate, Spacer
7	109P1		Screw
8	Purchase Locally		Screw, Flat Head, Hex Socket, 5/16 - 18 x 0.5 in.
9	231E1	---	Socket, Rope, 0.86 in. L2
	---	231F1	Socket, Rope, 0.42 in. L2
10	130J11		Washer, Lock, Internal-External
11	133BC1		Washer, Spring Seat

Two-Speed Header/Track Assembly

19-6178CA

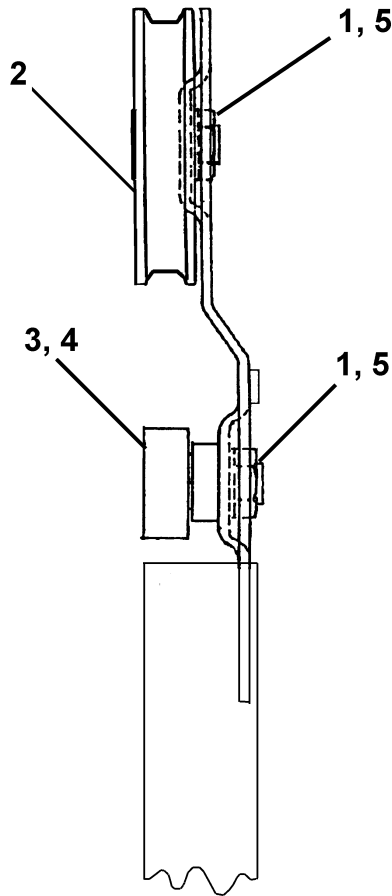



EW = Entrance Width

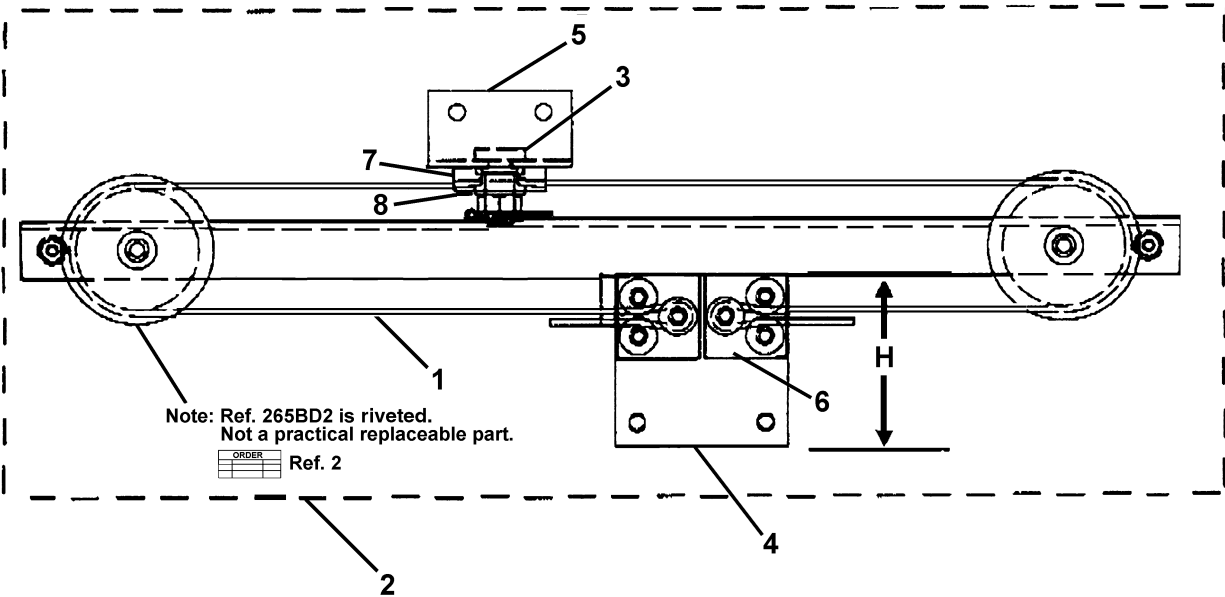
W/O VINTAGE				
REF. NO.	PART or ML	DESCRIPTION	EW (in.)	HAND
1	6178CD15	Assembly, Track, 69.3 L	42	---
	6178CD6	Assembly, Track, 69.7 L	42	☞
	6178CD7	Assembly, Track, 69.7 L	42	☞
	6178CD2	Assembly, Track, 85.7 L	42	☞
	6178CD3	Assembly, Track, 85.7 L	42	☞
	6178CD4	Assembly, Track, 97.7 L	42	☞
	6178CD5	Assembly, Track, 97.7 L	42	☞
	6178CD13 6178CD1 6178CD14 6178CD16	Assembly, Track, 78.3 L (some field drilling required)	48	---
	6178CD8	Assembly, Track, 85.7 L	48	☞
	6178CD9	Assembly, Track, 95.7 L	48	☞
	6178CD10	Assembly, Track, 97.7 L	48	☞
	6178CD11	Assembly, Track, 97.7 L	48	☞
	6178CD17	Assembly, Track, 87.3 L	54	---
	2	320AB8	Bumper	---
3	72DJ2	Nut, Grip	---	---
*	AAA24430AT7	Kit, Refresh. Includes: Hanger and Upthrust Rollers, Gibs, Bumpers, Relating Clip	---	---
4	50ADF1-162	Track, Fast, Shape Only, 162 in. L (field to cut and drill as needed), Note	---	---
	483RL2	Track, Fast, 67.2 in. L	42	---
	483RL1	Track, Fast, 76.2 in. L	48	---
	483RL3	Track, Fast, 85.2 in. L	54	---
5	1S-50AKL-106	Track, Slow, Shape Only, 106 in. L (field to cut and drill as needed), Note	---	---
6	130J11	Washer, Lock, Internal-External	---	---

NOTE: For other than standard tracks (Ref. 1), consult contact records.

*Not Shown



W/O VINTAGE		
REF. No.	PART No.	DESCRIPTION
1	72AF2	Nut
2	456CX4	Roller, w/o Pin, Polyurethane Tire, 3.375 in. \varnothing
	456EW1	Roller, w/ Integral Eccentric Pin, Polyurethane Tire, 3.375 in. \varnothing
	456EW2	Roller, w/Reversible Eccentric Pin, Polyurethane Tire, 3.375 in. \varnothing  TIP 21.2-4
3	456CP1	Roller, Upthrust, Polyurethane Tire, 1.38 in. \varnothing
4	456EK1	Roller, Upthrust, Polyurethane Tire, 1.38 in. \varnothing (for two-speed fast door, special shallow clearance)
5	Purchase Locally	Washer, Lock, 0.5 in.



REF. No.	W/O VINTAGE PART No.	DESCRIPTION	
1	174AS995	Aircord, <table border="1"><tr><td>ORDER</td></tr></table> Per Foot	ORDER
ORDER			
2	6178CG2	Assembly, Aircord, Complete, 42 in. Opening, 33.4 in. L	
	6178CG4	Assembly, Aircord, Complete, 42 in. Opening, 34.2 in. L	
	6178CG4 6178CG5	Assembly, Aircord, Complete, 48 in. Opening, 37.2 in. L	
	6178CG6	Assembly, Aircord, Complete, 54 in. Opening, 40.2 in. L	
3	65CN2	Bolt, T-Slotted	
4	316DEV1	Bracket, 3.01 in. H	
	316DEV2	Bracket, 3.08 in. H, Post-April 1998 Production	
5	316CTF2	Bracket	
6	386AKS1	Plate, Clamp	
7	231F1	Socket, Rope	
8	133BC1	Washer, Spring Seat	