

**Car Door Hanger and Track  
NG Door Systems: Single-Slide,  
Center-Opening, Two-Speed**

**Spare Parts Leaflet  
19-AAA24600A**

April 8, 2020 / Page 1 of 10

19	R-AAA24600A
----	-------------

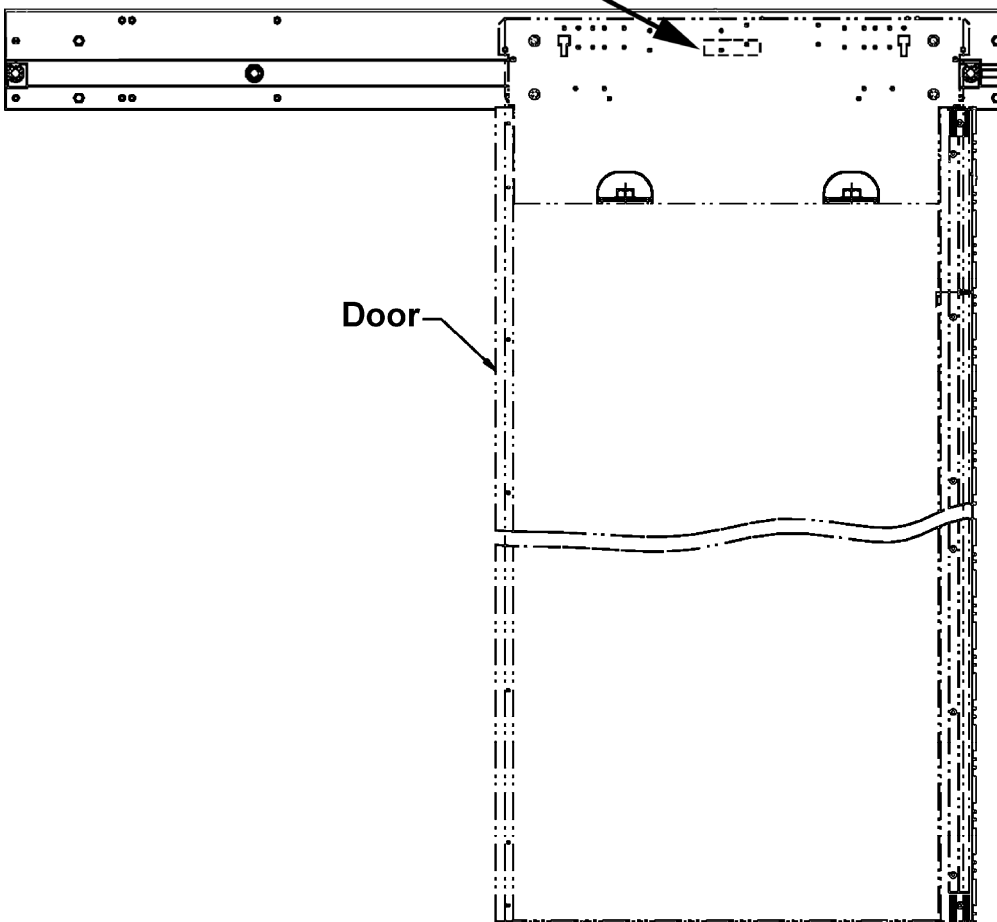
Single-Slide

19	R-AAA24600B
----	-------------

Center-Opening

19	R-AAA24600C
----	-------------

Two-Speed



Single-Slide  
Shown

**OTIS**

This document does not contain any  
technical data subject to EAR or ITAR

**SERVICE ENGINEERING  
Otis Elevator Company  
Bloomfield, Connecticut USA**

Unpublished Work—© Otis Elevator Co.; 2020

**Leaflet Description**

This leaflet provides spare parts information for Next Generation (NG) door systems car door hanger and track assemblies. Parts and lower levels associated with drawings AA24600A, AAA24600B, and AAA24600C are included in this SPL. They show information for the single-slide, center-opening, and two-speed doors respectively.

**Leaflet Revisions**

<b>Date Revised</b>	<b>Subject Matter Expert</b>	<b>Reason for Revision</b>
September 24, 2008	Brian Regan	New SPL
November 13, 2019	Pete Kelley	Revised history page
April 8, 2020	Pete Kelley	Added p/ns AAA456XZ5 and AAA456YA3 to page 9

**Related Drawings**

<b>Drawing No.</b>	<b>Title</b>	<b>Drawing No.</b>	<b>Title</b>
AAA24600A	Assembly and Arrangement Car Door Hanger and Track Single Slide	AAA24600B	Assembly and Arrangement Car Door Hanger and Track Center Opening
AAA24600C	Assembly and Arrangement Car Door Hanger and Track Two Speed		

**Related Documents**

<b>Document ID</b>	<b>Title</b>
---	---

**Subject Matter Expert**

<b>Name</b>	<b>Department</b>
Pete Kelley	OSC Service Engineering

**About Spare Parts Leaflets...**

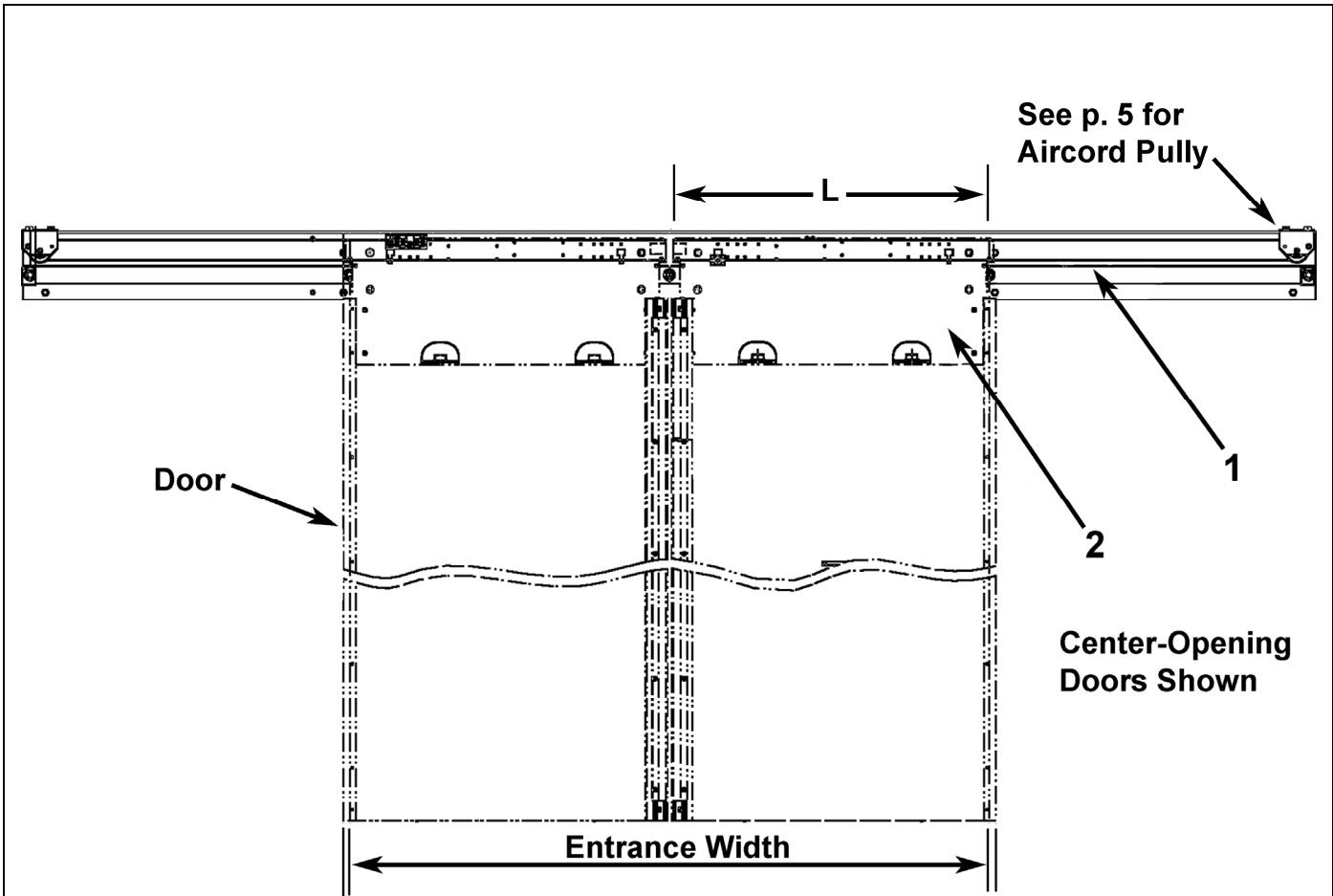
This document lists the lowest replaceable units (LRUs) for the standard version of the product. The LRUs are chosen by a team of Otis associates representing engineering and manufacturing.

While goal of this document is to make parts identification as easy as possible, the document cannot be all-inclusive. Elevator and escalator contracts classified as "special" or "custom" are not addressed here. For such contracts, please refer to specified information, the contract folder, TIPs, Field Education Articles, Construction Letters, etc. for further information.

If you have any suggestions about this document, please contact the subject matter expert listed on this page.

# Single-Slide and Center-Opening Door Hanger Assembly

**19-AAA24600A**

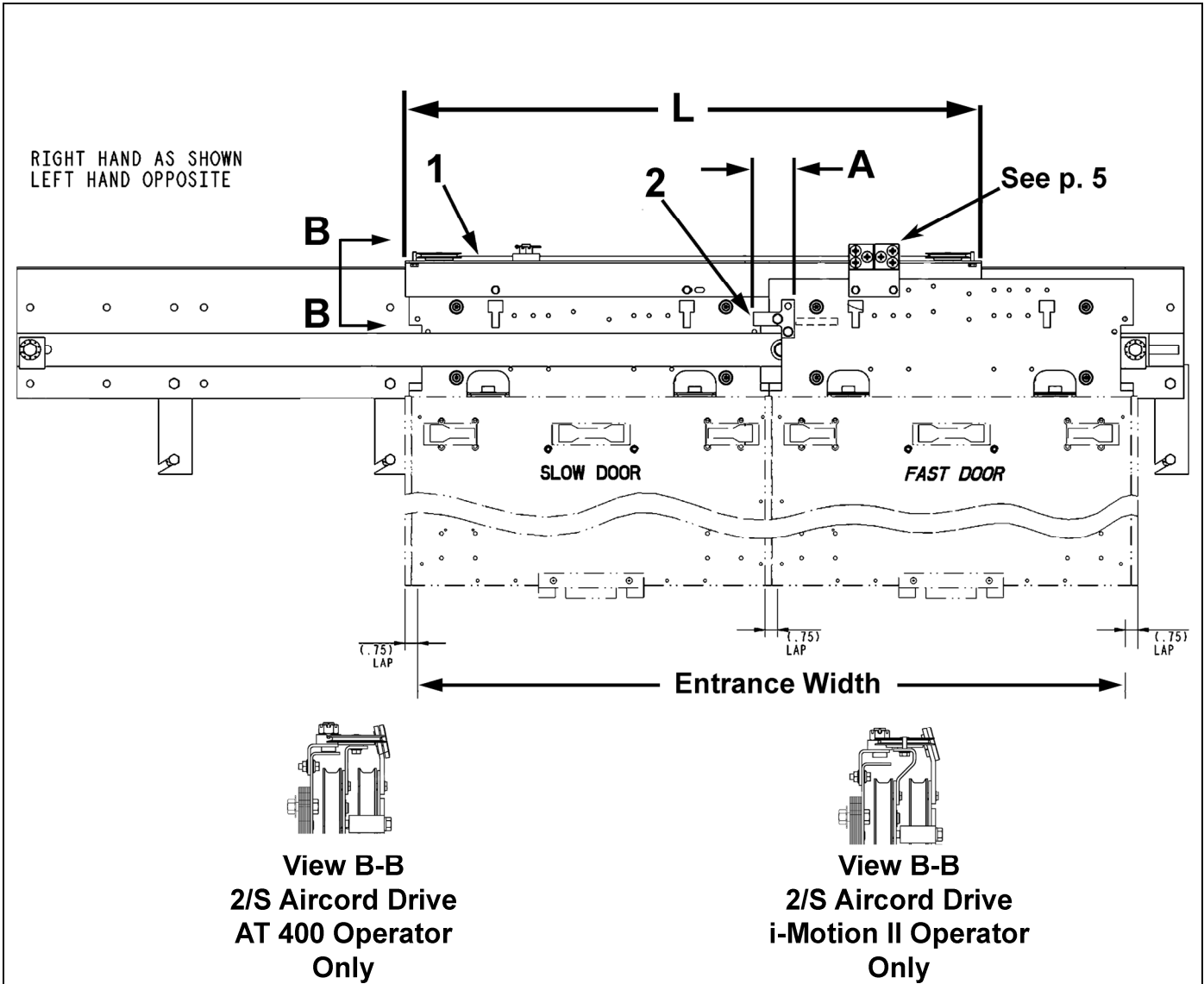


**19-AAA24600A**  
**19-AAA24600B**

REF. No.	PART No.	ENT. WIDTH (in.)	ENT TYPE	DESCRIPTION	LENGTH (L) (in.)
1	174AS34	36	C/O	Aircord, 115 in. Long	---
	174AS38	42	C/O	Aircord, 188 in. Long	---
	174AS39	48	C/O	Aircord, 212 in. Long	---
	174AS995	Variable	C/O	Aircord, per Foot	---
2	AAA6331CH1	36	C/O	Door Hanger	17.1
	AAA6331CH2	42	C/O		20.1
	AAA6331CH3	48	C/O		23.1
	AAA6331CH5	32	S/S		31.5
	AAA6331CH6	36	S/S		35.5
	AAA6331CH7	42	S/S		41.5

# 19-AAA24600A

# Two-Speed Door Hanger Assembly

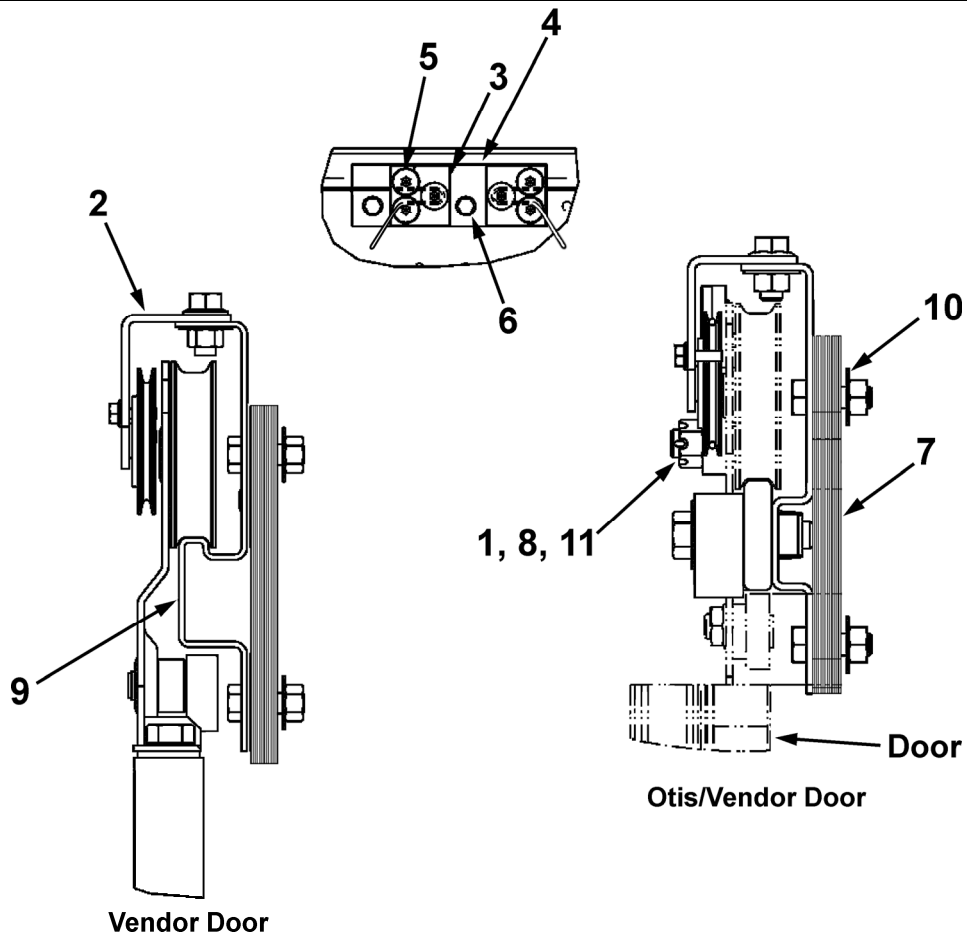


19-AAA24600C				
REF. No.	PART No.	ENT. WIDTH (in.)	LENGTH (L) (in.)	DESCRIPTION
1	6178CG4	42	34.2	Aircord Drive (AT400 only)
	6178CG5	48	37.2	
	6178CG6	54	40.2	
	6178CG7	42	34.2	Aircord Drive (I-Motion II only)
	6178CG8	48	37.2	
	6178CG9	54	40.2	
2*	AAA316GAQ1	---	---	Bracket (for Otis Door) A = 2.44
	AAA316GAQ2	---	---	Bracket (for Vendor Door) A = 3.44

\* NOTE: AAA316GAQ is a secondary relating device.

# Center-Opening Car Door Hanger and Track Assembly

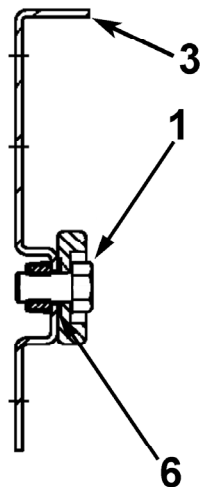
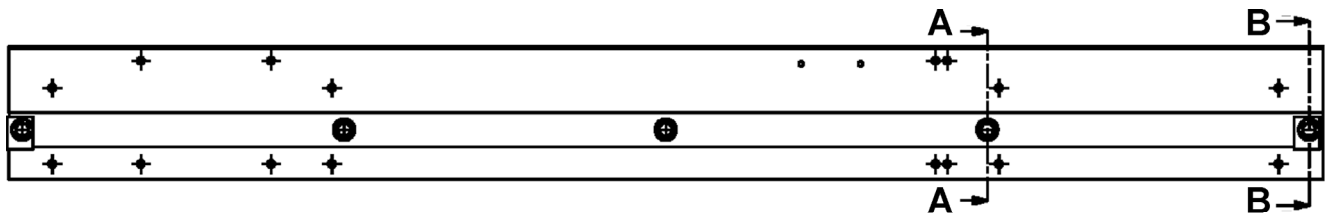
**19-AAA24600A**



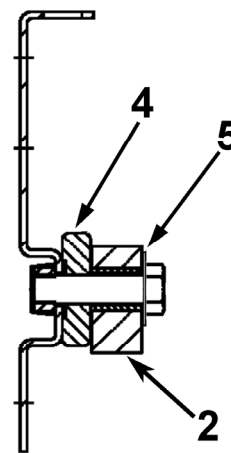
<b>19-AAA24600B</b>			
<b>REF. No.</b>	<b>PART No.</b>	<b>ENT WIDTH (in.)</b>	<b>DESCRIPTION</b>
1	65CN2	---	Bolt
2	AAA316FWQ2	---	Bracket, Sheave Assembly
3	386AKS1	---	Plate
4	386BKM1	---	Plate (larger plate below Ref. 6; C/O only)
5	VP-713700	---	Screw, 5/16-18 x 1/2 Socket Flat Cap ZP
6	109P2	---	Screw, Thread Rolling, 1/4-20
7	255DY39	---	Shim (2 in. thick)
8	231F1	---	Socket, Rope
9	ABA483WS8	36	Track Header Car Center Opening (See Page 6)
	ABA483WS10	42	
	ABA483WS12	48	
10	130J4	---	Washer, Lock, 3/8 INT EXT
11	133BC1	---	Washer, Spring Seat

# Center-Opening Track Car Header

**19-AAA24600A**



**Section A-A**

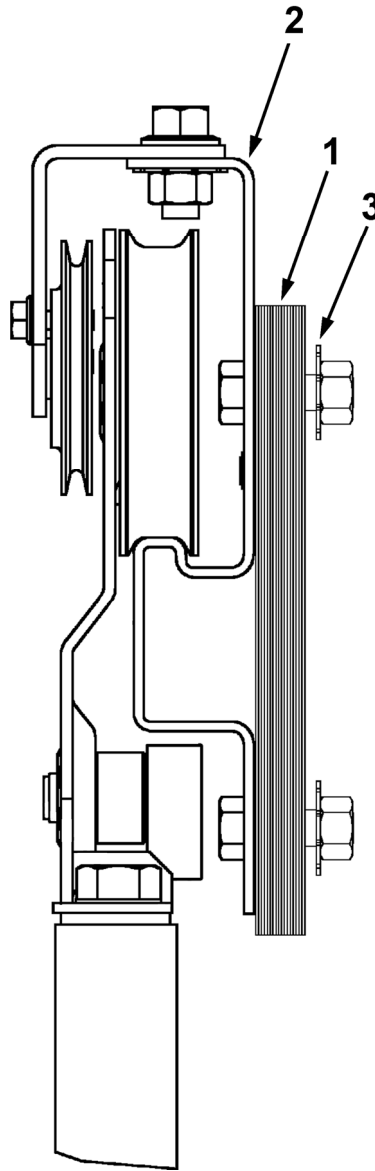


**Section B-B**

<b>19-AAA24600B</b>			
<b>REF. No.</b>	<b>PART No.</b>	<b>ENT WIDTH (in.)</b>	<b>DESCRIPTION</b>
1	Purchase Locally	---	Bolt, 1/2-13 x 1 HEX ZP
2	320AB8	---	Bumper
3	AAA50ATN-106	---	Shape, Car Header w/o Track
4	483RL4	36	Track (2.0 in. x 0.5 in.)
	483RL5	42	
	483RL6	48	
5	130J11	---	Washer, 1/2 Internal/External Lock
6	Purchase Locally	---	Washer, 1/2 Internal Lock ZP

# Single-Slide Car Door Hanger and Track Assembly

**19-AAA24600A**

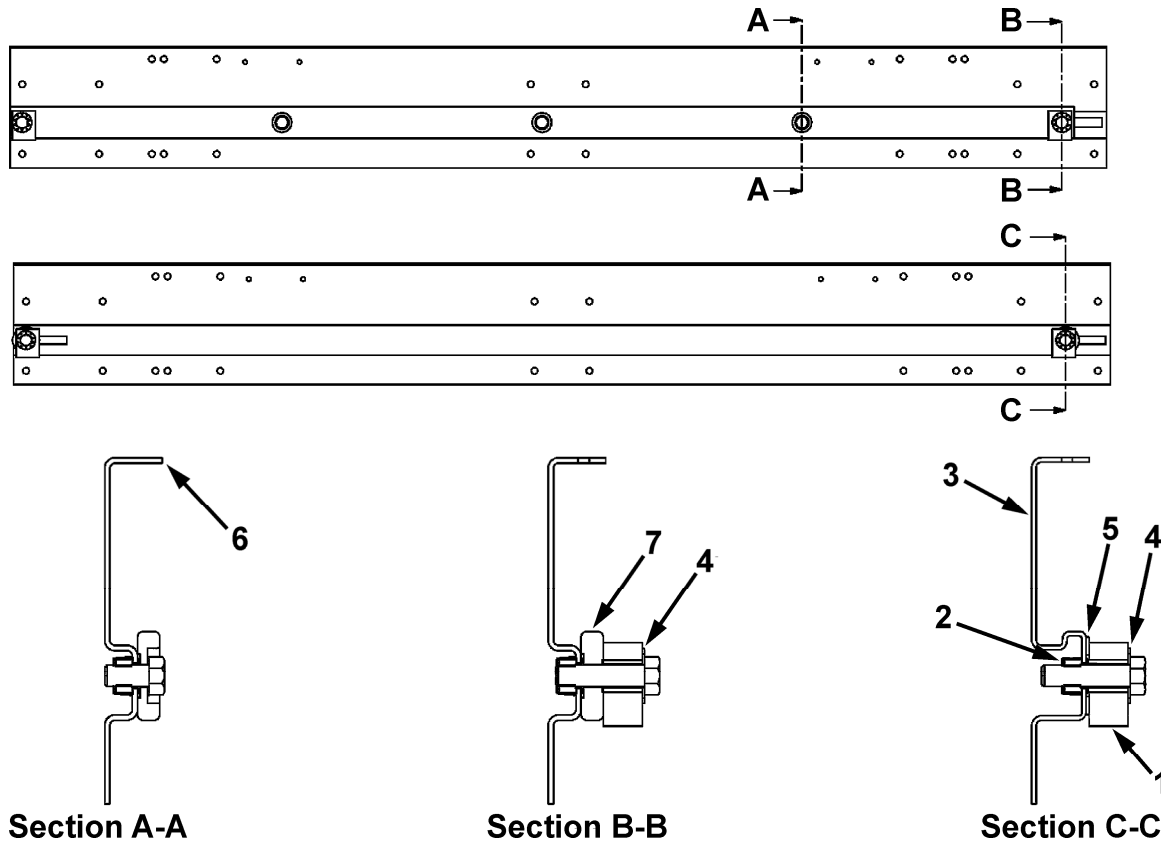


**19-AAA24600A**

REF. No.	PART No.	ENT. WIDTH (in.)	DESCRIPTION
1	255DY39	---	Shim (approx. 0.03 in. thick)
2	ABA483WT2	32	Track Header, Car Single-Slide (see p. 8 for components)
	ABA483WT4	36	
	ABA483WT6	42	
3	130J4	---	Washer, 3/8 Internal/External Lock

# Single-Slide Track Header

**19-AAA24600A**



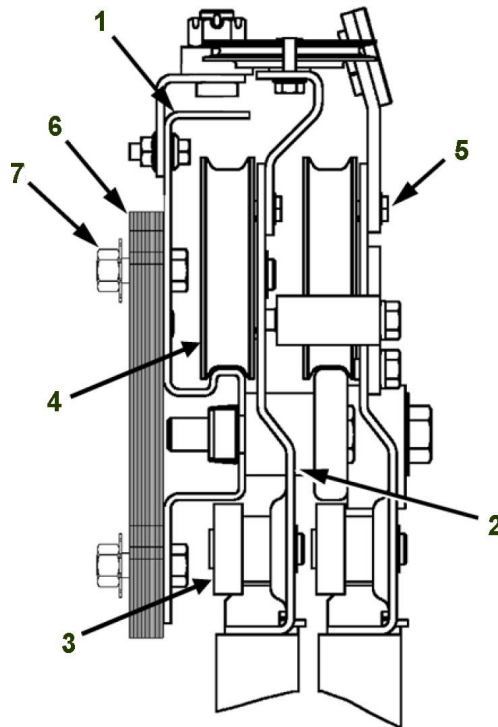
**19-AAA24600A**

REF. No.	PART No.	ENT. WIDTH (in.)	DESCRIPTION
1	320AB8	---	Bumper
2	72DJ2	---	Gripnut, 1/2-13
3	ABA483WT1	32	Track
	ABA483WT3	36	
	ABA483WT5	42	
	AAA483XB998-106	---	Shape, 90.7 in. L (no holes)
4	130J11	---	Washer, 1/2 INT EXT Lock
5	127VB51	---	Washer
6	AAA50ATN-106	---	Shape, 106 in. L, Raw Header w/o Track
7	50ADF1-162	---	Shape, 162 in. L, Raw Track w/o Holes



# Two-Speed Car Door Hanger and Track Assembly

**19-AAA24600A**



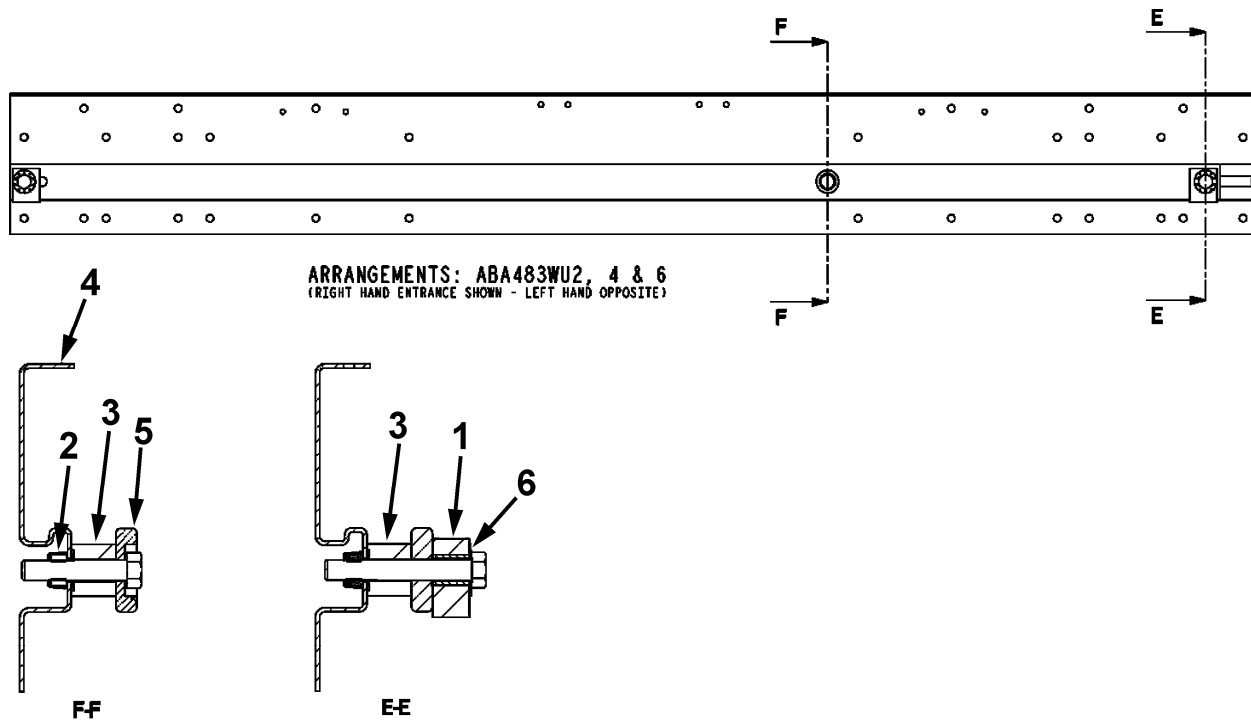
Used with i-Motion II Operator  
See page 4 for AT400.

19-AAA24600C			
REF. No.	PART No.	ENT WIDTH (in.)	DESCRIPTION
1	ABA483WU2	42	Assembly, Car Track & Header, Two-Speed (see p. 10 for breakdown)
	ABA483WU4	48	
	ABA483WU6	54	
2	AAA6331CH2	42	Hanger, Door (fast or slow)
	AAA6331CH3	48	
	AAA6331CH4	54	
3	AAA456XZ5	---	Pin, Eccentric, w/ Metric Threads & w/ Yellow Chromate Pin Color, w/ Nut and Washer, See <b>NOTE</b>
4	AAA456YA3	---	Roller Kit, Door, w/ Metric Threads & w/ Yellow Chromate Pin Color, w/ Nut and Washer, See <b>NOTE</b>
5	109P2	---	Screw, 1/4-20 Thread Rolling
6	255DY39	---	Shim (approx. 0.03 in. thick)
7	130J4	---	Washer, 3/8 Internal/External Lock

**NOTE:** To distinguish earlier vintage rollers with imperial threaded pins used on earlier door systems from these metric rollers, note the yellow plating on the pins within these metric rollers.

# Two-Speed Track Header

**19-AAA24600A**



**19-AAA24600C**

REF No.	PART No.	ENT. WIDTH (in.)	LENGTH	DESCRIPTION
1	320AB8	---	---	Bumper
2	72DJ2	---	---	Gripnut, 1/2-13
3	AAA462HR10	---	---	Spacer
4	ABA483WU1	42	69.3	Track (for Assembly)
	ABA483WU3	48	78.3	
	ABA483WU5	54	87.3	
5	483RL1	48	76.2	Track, Fast Door (Shape p/n 50ADF1)
	483RL2	42	67.2	
	483RL3	54	85.2	
6	130J11	---	---	Washer, 1/2 INT EXT Lock