

**Door Operator
AT400 Engine Unit**

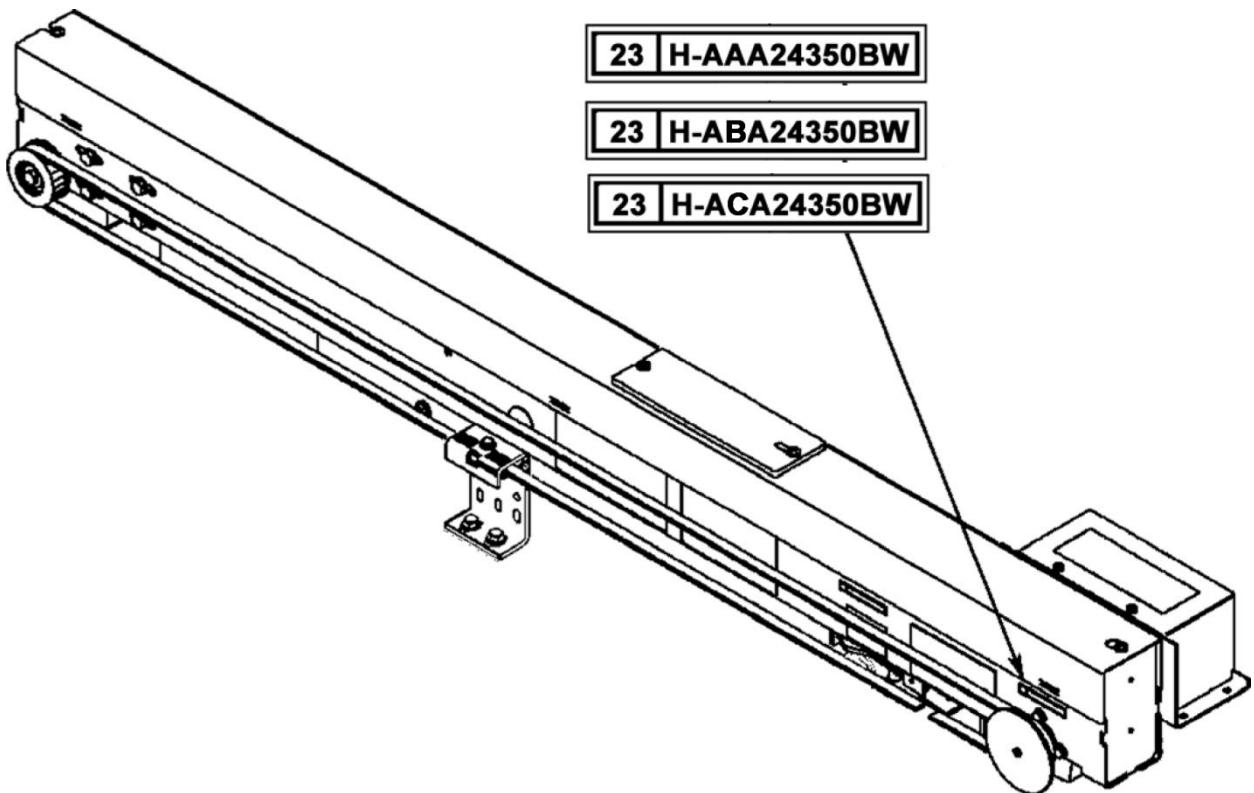
Spare Parts Leaflet

23-AAA24350BW

September 18, 2024 / Page 1 of 12

OBSOLESCENCE NOTICE

The product listed in this SPL is obsolete. Some components may still be available, but Otis recommends an upgrade (see TIP 32.2-1 for potential upgrade).



OTIS

This document does not contain any technical data subject to EAR or ITAR

**SERVICE ENGINEERING
Otis Elevator Company
Bloomfield, Connecticut USA**

Unpublished Work—© Otis Elevator Co.; 2024

Leaflet Description

This leaflet provides spare parts information for the AT400 door operator. Only the lowest replaceable units (LRU) for the engine unit/controller are covered here. LRU part numbers for center-open, single-slide, and two-speed linkage apparatus are defined in separate SPLs.

Leaflet Revisions

Date Revised	Subject Matter Expert	Reason for Revision
March 5, 2014	Brian Regan	New SPL
June 29, 2016	Brian Regan	Updated pp. 5 and 7
September 13, 2017	Brian Regan	Updated table format on pp. 5–6 to clarify parts ordering
March 27, 2019	Pete Kelley	Updated Ref. 1 on p. 7
June 23, 2021	Pete Kelley	Corrected information
September 18, 2024	Juan Murillo	Added Obsolescence Notice.

Related Drawings

Drawing No.	Title	Drawing No.	Title
AAA24350BW	AT400 Door Operator Assembly	ACA24350BW	AT400 Door Operator Assembly
ABA24350BW	AT400 Door Operator Assembly	AAA25590W	Gate Switch

Related Documents

Document ID	Title
SPL 23-AAA24470R	<i>AT400 (new equipment) Center-Opening Door Operator</i>
SPL 23-AAA24470S	<i>AT400 (modernization) Center-Opening Door Operator</i>
SPL 23-AAA24470X	<i>Door Operator AT400, S/S, C/O, 2/S, NG Door System</i>
TIP 22.16-2	<i>Driver and Idler Pulley Replacement Kits</i>
TIP 22.16-5	<i>Software Upgrade for AT400 (OMMS task 12V1S)</i>
CI 16-07-029	<i>AT400 Door Operator Software Update</i>

Subject Matter Expert

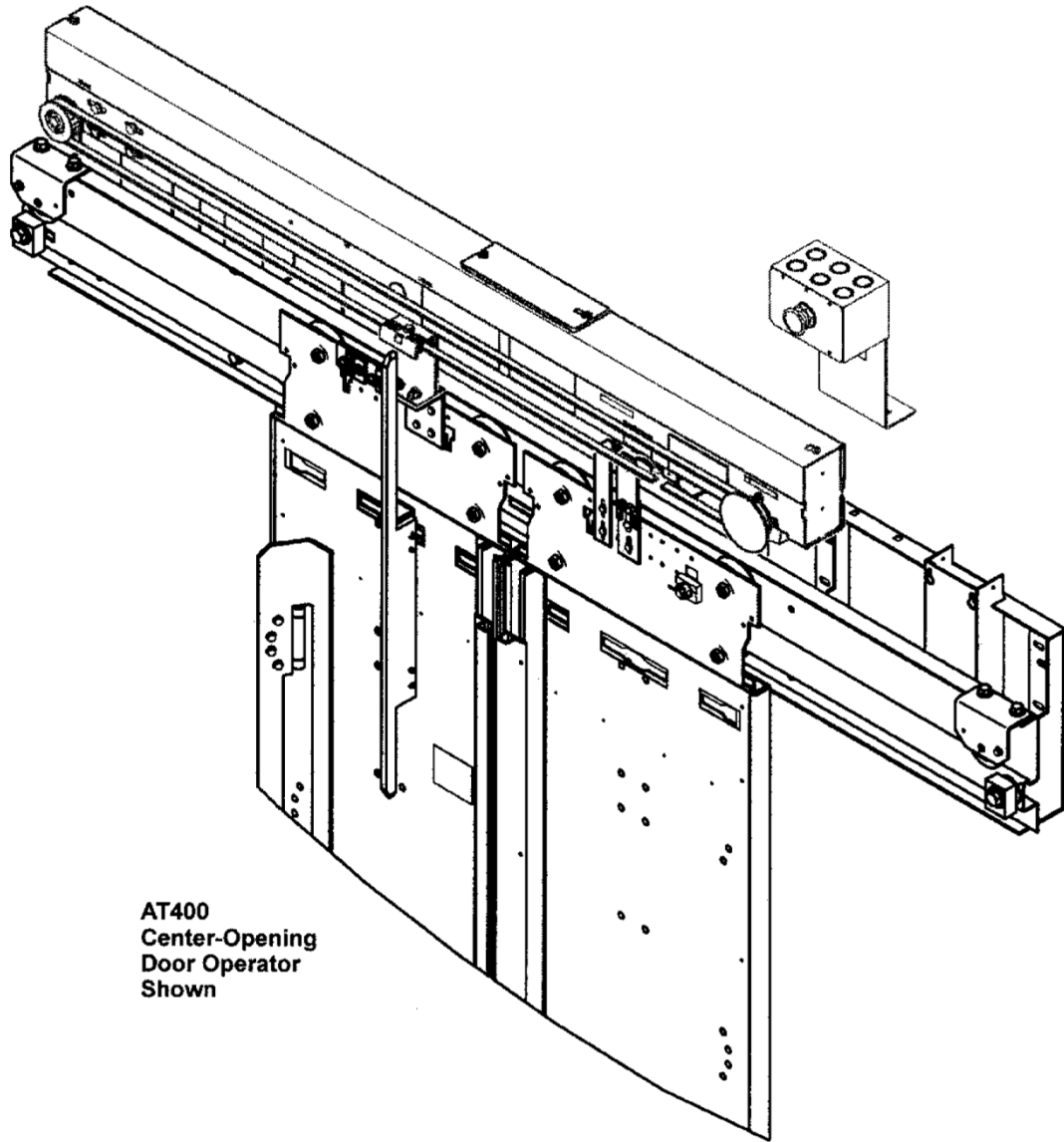
Name	Department
Pete Kelley	OSC Service Engineering

About Spare Parts Leaflets...

This document lists the lowest replaceable units (LRUs) for the standard version of the product. The LRUs are chosen by a team of Otis associates representing engineering and manufacturing.


While goal of this document is to make parts identification as easy as possible, the document cannot be all-inclusive. Elevator and escalator contracts classified as “special” or “custom” are not addressed here. For such contracts, please refer to specified information, the contract folder, TIPs, Field Education Articles, Construction Letters, etc. for further information.

If you have any suggestions about this document, please contact the subject matter expert listed on this page.

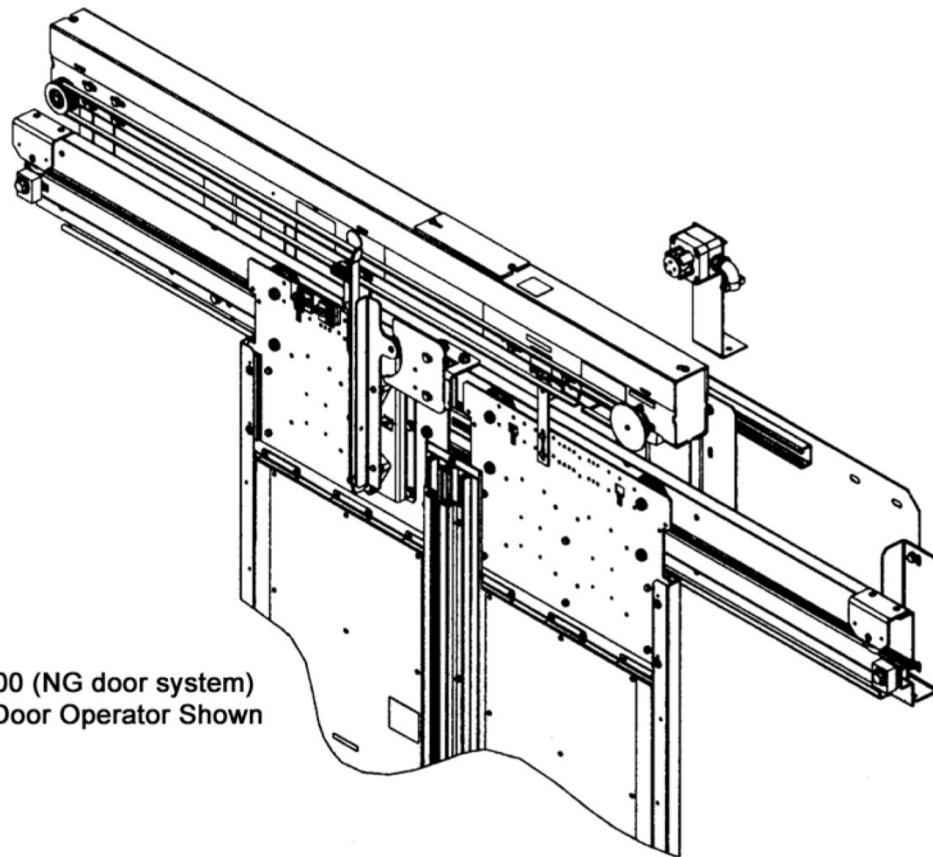


**AT400
Center-Opening
Door Operator
Shown**

Door Operator Linkage SPLs

 SPL 23-AAA24470R	Linkage Assembly, AT400 Door Operator Center-Opening Doors
	Linkage Assembly, AT400 Door Operator Single-Slide Door
	Linkage Assembly, AT400 Door Operator Two-Speed Doors

**Door Operator Linkage
Assemblies (NG Door System)**



AT400 (NG door system)
C/O Door Operator Shown

Door Operator Linkage SPLs



SPL 23-AAA24470X

Linkage Assembly, AT400 Door Operator Center-Opening Doors (NG door system)

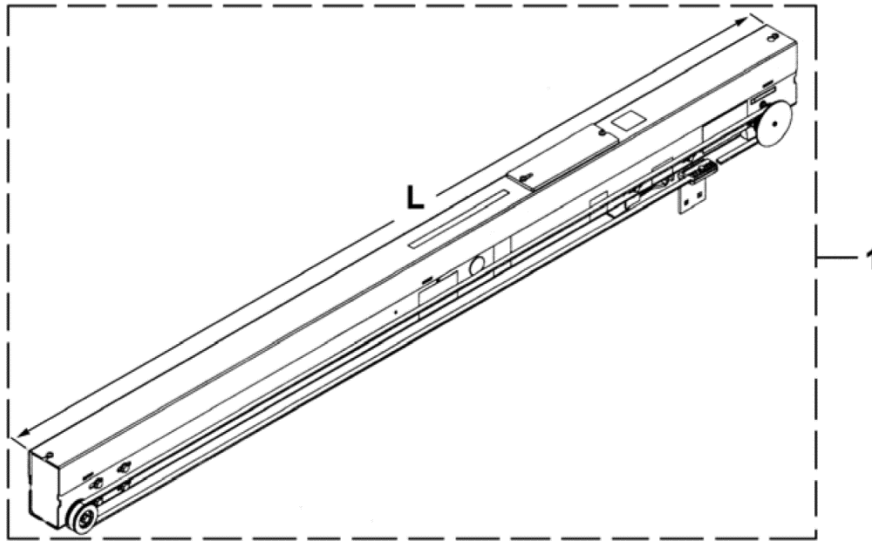
Linkage Assembly, AT400 Door Operator Single-Slide Door (NG door system)

Linkage Assembly, AT400 Door Operator Two-Speed Doors (NG door system)

AT400 Operator

23-AAA24350BW

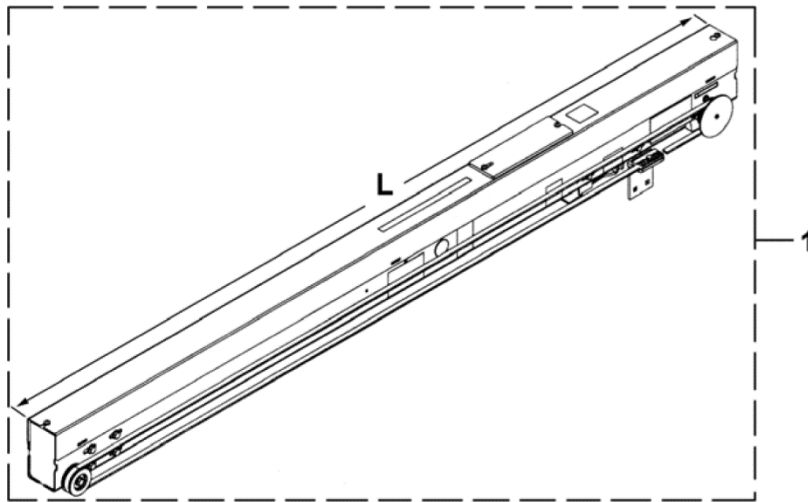
Type ACA24350BW Engine Unit



REF. No.	APPLICATION	AAA24350BW ABA24350BW ACA24350BW	OPERATOR LENGTH	DOOR HAND	DOOR TYPE	OPENING WIDTH	
		PART No.				MIN	MAX
1	Otis Serial Link (Multidrop) Controller Communication such as Elevonic® R, Gen2®, 411, 335, GCSM, RSVF, RSDC, and GEM Systems	ACA24350BW5 ACA24350BW56	76.4 in. (1940 mm)		2SP & 1SP Side Slide	48	60
					C/O – aircord related	49	60
					C/O – belt related	42	53
		ACA24350BW10 ACA24350BW57	76.4 in. (1940 mm)		2SP & 1SP Side Slide	48	60
					C/O – aircord related	49	60
					C/O – belt related	42	53
		ACA24350BW15 ACA24350BW58	64.4 in. (1635 mm)		2SP & 1SP Side Slide	42	47
					C/O – aircord related	41	48
					C/O – belt related	-	41
		ACA24350BW20 ACA24350BW59	64.4 in. (1635 mm)		2SP & 1SP Side Slide	42	47
					C/O – aircord related	41	48
					C/O – belt related	-	41
		ACA24350BW38 ACA24350BW60	59.4 in. (1509 mm)		2SP & 1SP Side Slide	33	41
					C/O – aircord related	33	40
ACA24350BW39 ACA24350BW61	59.4 in. (1509 mm)		2SP & 1SP Side Slide	33	41		
			C/O – aircord related	33	40		
ACA24350BW44 ACA24350BW62	52.9 in. (1343 mm)		2SP & 1SP Side Slide	-	32		
			C/O – aircord related	-	32		
ACA24350BW43 ACA24350BW63	52.9 in. (1343 mm)		2SP & 1SP Side Slide	-	32		
			C/O – aircord related	-	32		

NOTE: For replacing anything other than the existing AT400 engine unit, see TIP 22.16-1, 7300AC, A7777 (PWM), 7777 Resistance Control to AT400 Door Operator Retrofit Kit with Existing Otis Controller.

Type ACA24350BW Engine Unit

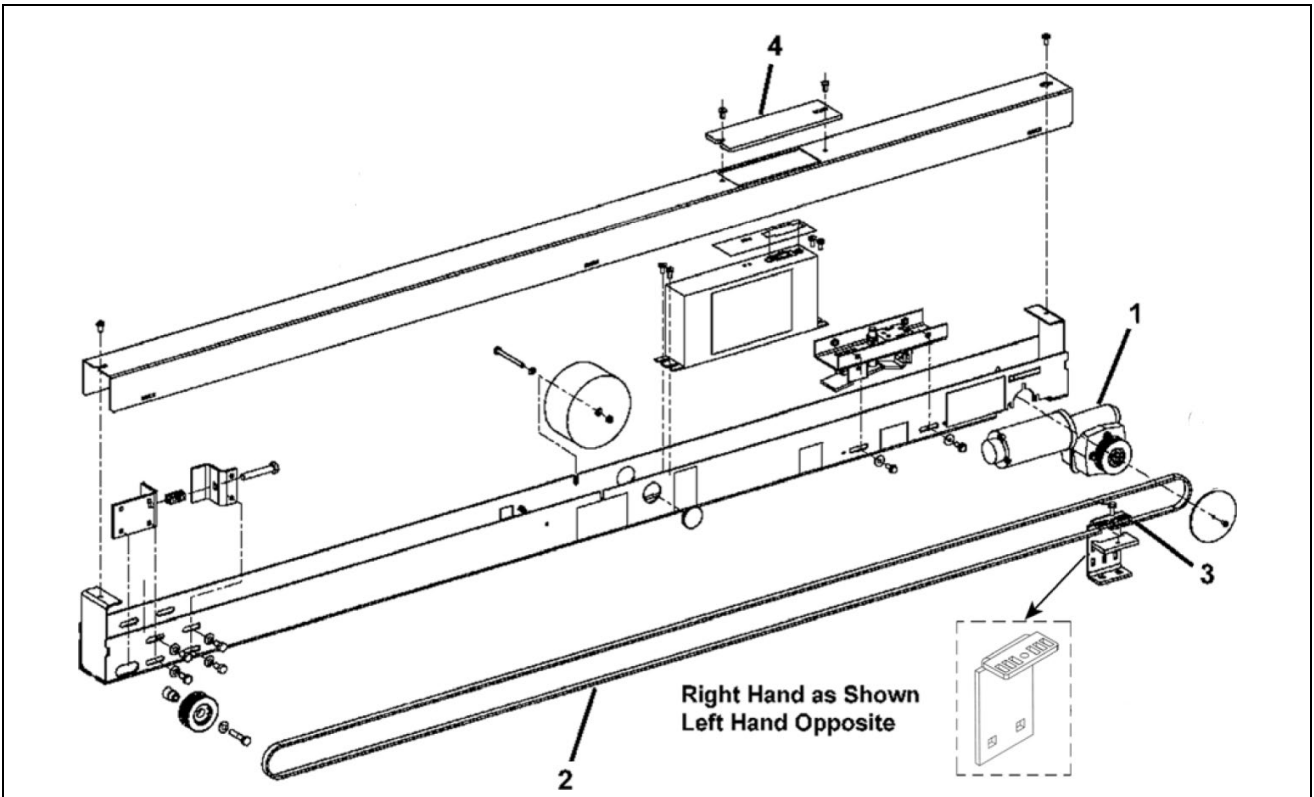


REF. No.	APPLICATION	AAA24350BW ABA24350BW ACA24350BW			OPENING WIDTH		
		PART No.	OPERATOR LENGTH	DOOR HAND	DOOR TYPE	MIN	MAX
1	Discrete Controller Communication such as 211, LRVF, Hydro Accel, Relay Logic, and non-Otis Systems	ACA24350BW45	76.4 in. (1940 mm)	[Right Hand]	2SP & 1SP Side Slide	48	60
					C/O – aircord related	49	60
					C/O – belt related	42	53
		ACA24350BW46	76.4 in. (1940 mm)	[Right Hand]	2SP & 1SP Side Slide	48	60
					C/O – aircord related	49	60
					C/O – belt related	42	53
		ACA24350BW47	64.4 in. (1635 mm)	[Right Hand]	2SP & 1SP Side Slide	42	47
					C/O – aircord related	41	48
					C/O – belt related	-	41
		ACA24350BW48	64.4 in. (1635 mm)	[Right Hand]	2SP & 1SP Side Slide	42	47
					C/O – aircord related	41	48
					C/O – belt related	-	41
		ACA24350BW49	59.4 in. (1509 mm)	[Right Hand]	2SP & 1SP Side Slide	33	41
					C/O – aircord related	33	40
		ACA24350BW50	59.4 in. (1509 mm)	[Right Hand]	2SP & 1SP Side Slide	33	41
					C/O – aircord related	33	40
		ACA24350BW51	52.9 in. (1343 mm)	[Right Hand]	2SP & 1SP Side Slide	-	32
					C/O – aircord related	-	32
AACA24350BW52	52.9 in. (1343 mm)	[Right Hand]	2SP & 1SP Side Slide	-	32		
			C/O – aircord related	-	32		


* For replacing anything other than the existing AT400 engine unit, see TIP 22.16-1, 7300AC, A7777 (PWM), 7777 Resistance Control to AT400 Door Operator Retrofit Kit with Existing Otis Controller.

Operator Engine Components

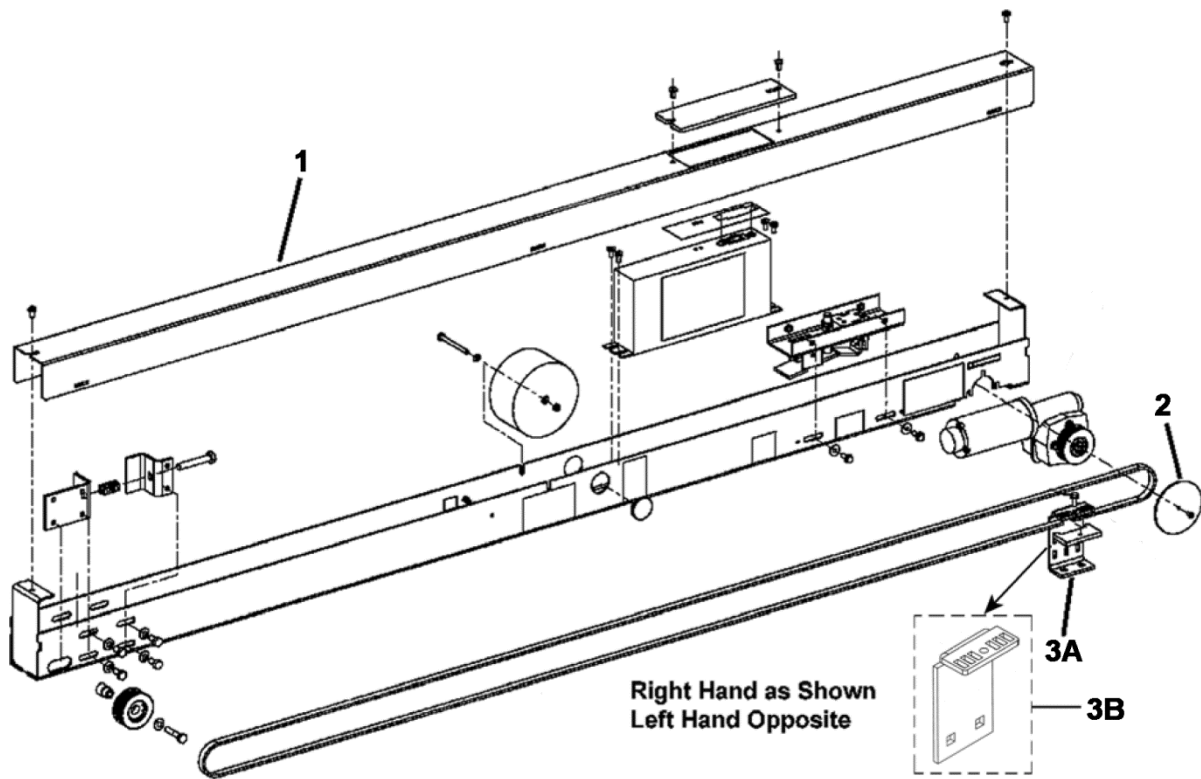
23-AAA24350BW




**AAA24350BW
ABA24350BW
ACA24350BW**

REF. No.	PART No.	DESCRIPTION
1	---	Assembly, Gear Motor,  p. 11
2	AAA717T2	Belt, Relating, w/ 2/S (48 in., 54 in., & 60 in. or 1219 mm, 1371 mm & 1524 mm), S/S & C/O (Aircord Related) Up to (60 in. or 1524 mm), and C/O (Belt Related) up to (53 in. or 1346 mm) Doors
	AAA717T3	Belt, Relating, w/ 2/S (42 in. & 47 in. or 1067 mm or 1194 mm), S/S (32 in., 36 in., 42 in., & 47 in. or 813 mm, 914 mm, 1067 mm & 1194 mm), C/O (Aircord Related) (42 in. & 48 in. or 1067 mm & 1219 mm), and C/O (Belt Related) (41 in. or 1041 mm) Doors
	AAA717T4	Belt, Relating, w/ 2/S (36 in. & 40 in. or 914 mm & 1016 mm), C/O (Aircord Related) (32 in. & 36 in. or 813 mm & 914 mm), and S/S (40 in. or 1016 mm) Doors
	AAA717T5	Belt, Relating, w/ C/O (Aircord Related), S/S & 2/S (32 in. or 813 mm) Doors
3	AAA386LQC1	Clamp
4	AAA346BAT1 AAA346BAT2	Cover

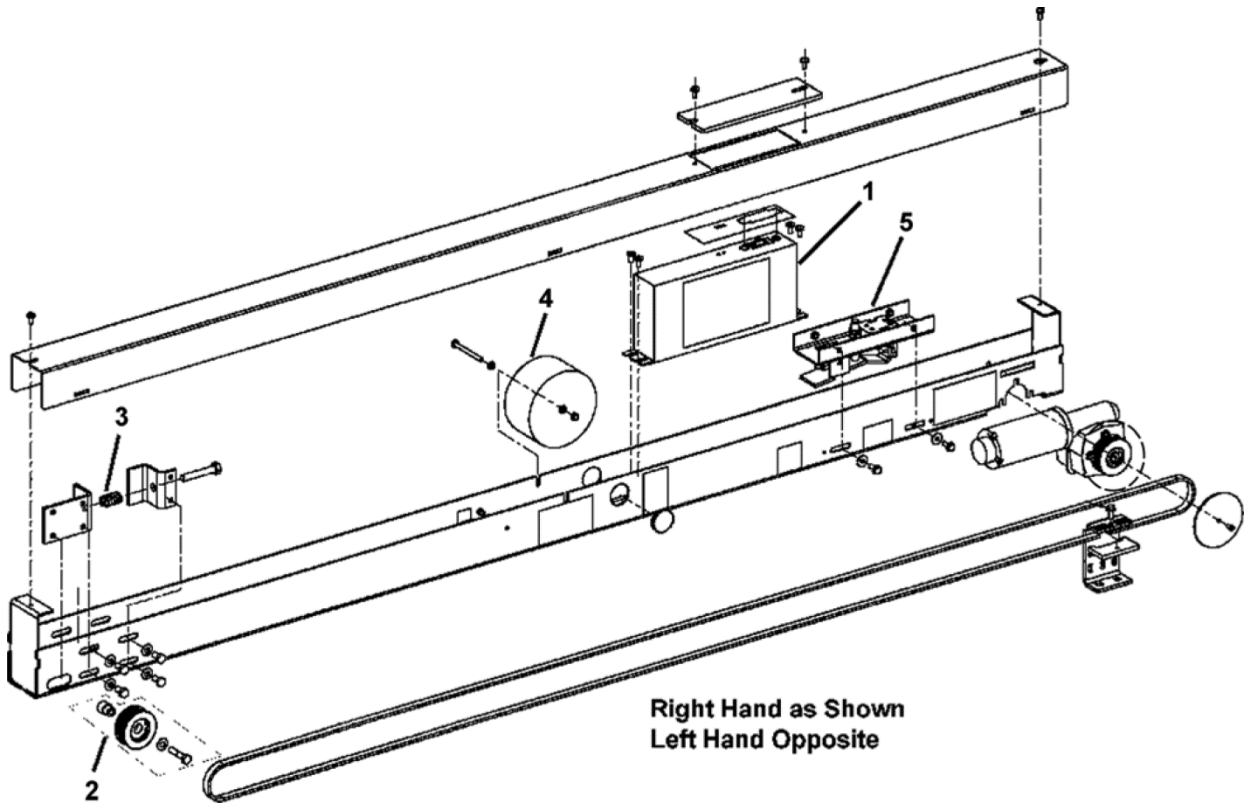
(Continued on Next Page)





**AAA24350BW
ABA24350BW
ACA24350BW**

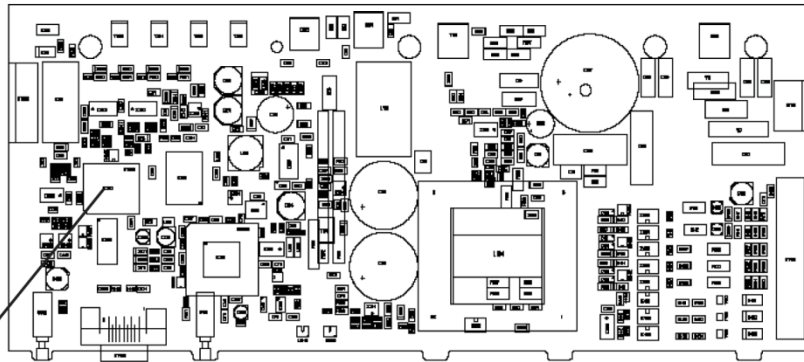
REF. No.	PART No.	DESCRIPTION
1	AAA346BAG1 ABA346BAG1	Cover, L = 76.4 in. or 1940 mm
	AAA346BAG2 ABA346BAG2	Cover, L = 64.4 in. or 1635 mm
	AAA346BAG3 ABA346BAG3	Cover, L = 59.4 in. or 1509 mm
	AAA346BAG4 ABA346BAG4	Cover, L = 52.9 in. or 1343 mm
2	AAA384AHJ1	Guard
3A	AAA392CJ1	Hitch,  p. 4
3B	AAA392DS1	Hitch

(Continued on Next Page)

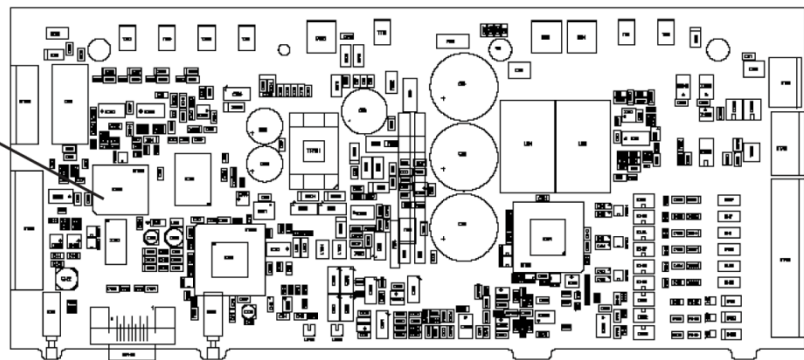


AAA24350BW ABA24350BW ACA24350BW		
REF. No.	PART No.	DESCRIPTION
1	AAA25580AL2	Control Unit (AC Power Supply, Discrete I/O)
	AAA25580AL3	Control Unit (120 VDC, Discrete I/O)
	AAA25580AL4	Control Unit (AC Power Supply, Multi-Drop)
2	AAA198BF501	Kit, Idler Pulley Replacement,  TIP 22.16-2. Kit Contains: (1) Pin, (1) Idler Pulley, (1) M8 x 40 Hex Bolt, (1) Washer
3	AAA90EW1	Spring, Compression
4	AAA621BF2	Power Supply, 110 V
	AAA621BF3	Power Supply, 230 V
5	---	Switch, Gate,  p. 12

Discrete AT400 Electronics Board




Multidrop AT400 Electronics Board



1

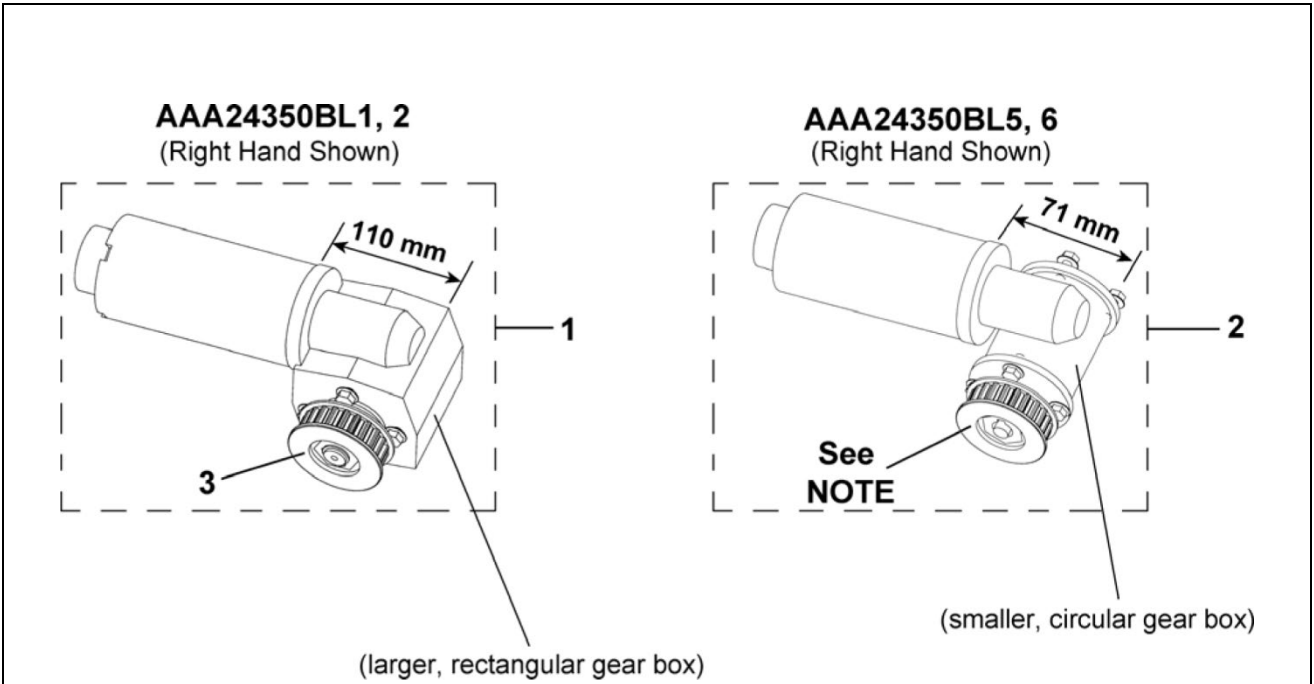
AAA24350BW
ABA24350BW
ACA24350BW






REF. No.	PART No.	DESCRIPTION
1	AAA816AJ1	Kit, Programmed EPROM,  NOTE

NOTE: This kit is for earlier versions of the EPROM-based AT400 controllers that have software version prior to V3.31 (refer to CI 16-07-029 or TIP 22.16-5). These controllers cannot be updated using the PDA and the chip must be replaced using this kit.

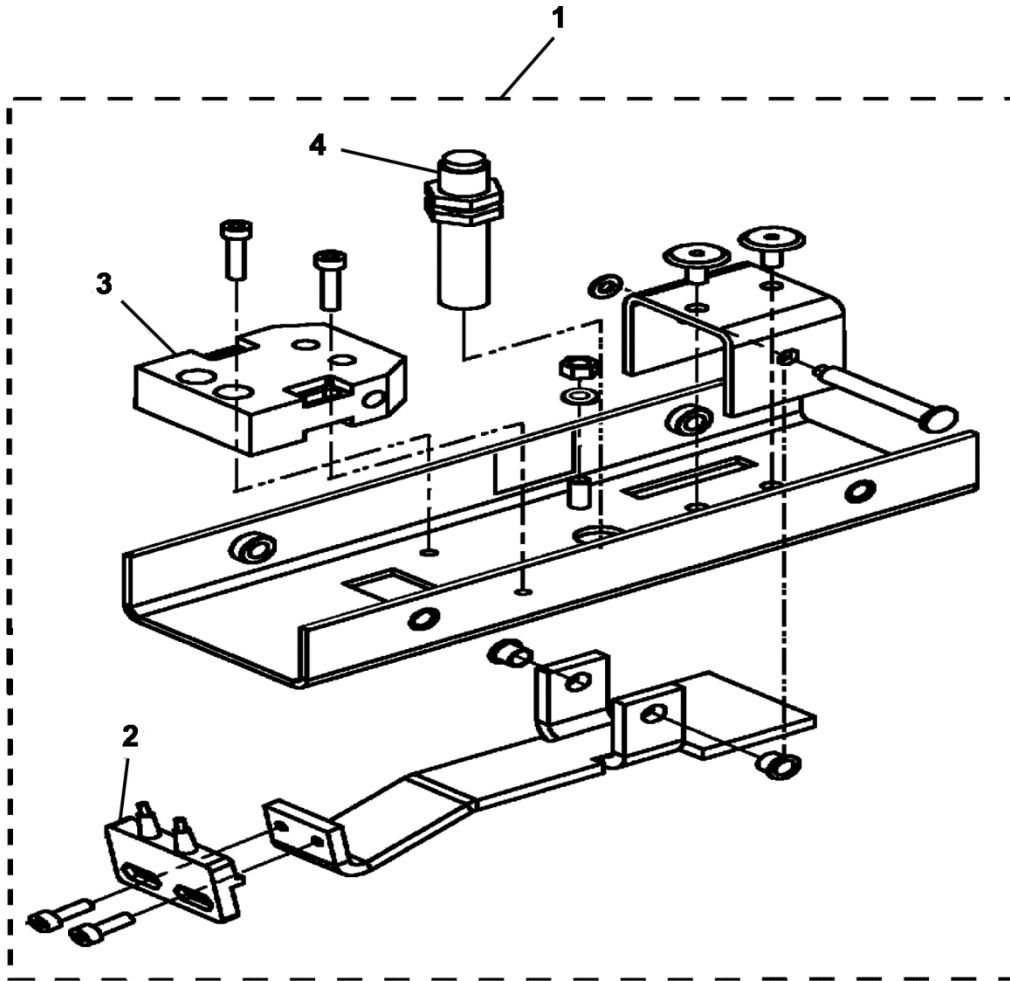
Gear Motor Assembly

23-AAA24350BW



		AAA24350BW ABA24350BW ACA24350BW			
		New Installation prior to 03/07	New Installation after 03/07		
REF. No.	PART No.		DESCRIPTION	HAND	
1	AAA24350BL1	---	Assembly, Gear Motor and Sheave,		
	AAA24350BL2	---			
2	---	AAA24350BL5 AAA24350BL1	See NOTE		
	---	AAA24350BL6 AAA24350BL2			
3	AAA198BF500		Kit, Drive Pulley Replacement,  TIP 22.16-2 Kit Contains: (1) Driver Pulley, (1) Key, (1) Retaining Ring, (1) Loctite® Retainer, (1) Alcohol Wipes, (1) Scotch-Brite®, Fine Duty	---	

NOTE: Drive sheave used in gear motor assembly installed after 03/07 cannot be replaced. Field needs to order gear motor assembly type AAA24350BL (ref. 1 and 2). The drive replacement kit (ref. 3) can be used to replace the drive pulley after the initial replacement of gear motor assembly.



**AAA24350BW
ABA24350BW
ACA24350BW**

REF. No.	PART No.	DESCRIPTION
1	AAA25590W1	Assembly, Gate Switch
2	AAA661B8	Shunt
3	AAA661B101	Switch
4	AAA24431B1	Switch, Proximity