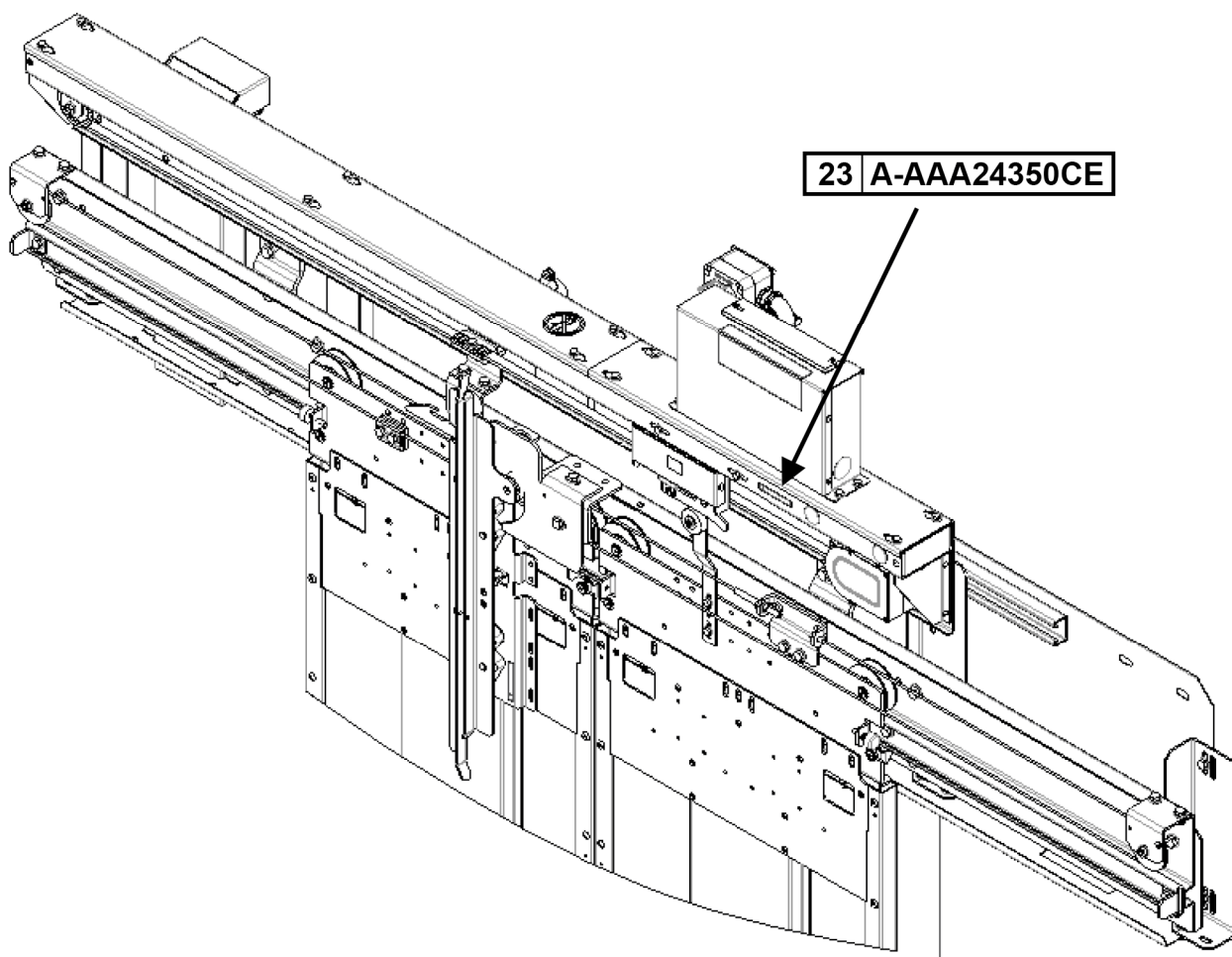


**Otis Glide® A & S Door
Operator Systems**

**Spare Parts Leaflet
23-AAA24350CE**

December 18, 2019 / Page 1 of 10



OTIS

This document does not contain any
technical data subject to EAR or ITAR

**SERVICE ENGINEERING
Otis Elevator Company
Bloomfield, Connecticut USA**

Unpublished Work—© Otis Elevator Co.; 2019

Leaflet Description

This leaflet provides information on the lowest replaceable units (LRUs) for the Otis Glide™ A & S car door operator modules.

Leaflet Revisions

Date Revised	Subject Matter Expert	Reason for Revision
January 15, 2014	Mike Tracey / Rick Kulak	New SPL
October 15, 2014	Sohaib Shaikh	Changed proximity sensor p/n from AAA24431H7 to AAA608D12 on p. 6, ref. 6
October 30, 2019	Brian Regan	Update for Modernization and Open Order Space Parts
November 20, 2019	Peter Kelley	Revised history page
December 18, 2019	Peter Kelley	Corrected p. 5

Related Drawings

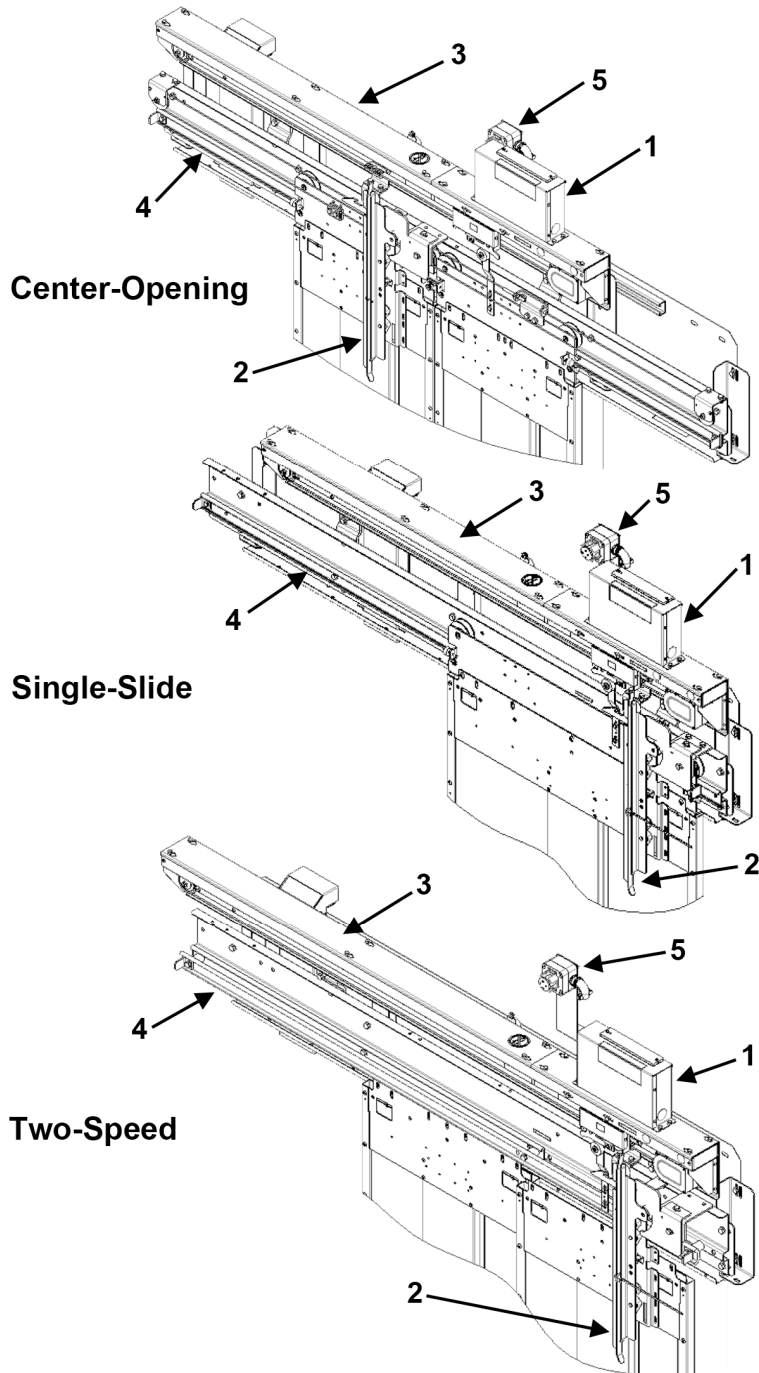
Drawing No.	Title	Drawing No.	Title
AAA24450AE	Glide Door Operator System	AAA25590AH	Car Door Gate Switch
AAA24350CE	Glide Door operator (90W & 135W)	ABA24390N	Car Door Coupling
AAA24431H	Door Operator Wire Harness	AAA24600H	Header Assembly, CO
AAA24520Z	Cab Interface	AAA24600J	Header Assembly, SS
AAA24450AE_VI	Vendor Interface	AAA24600K	Header Assembly, 2S

Related Documents

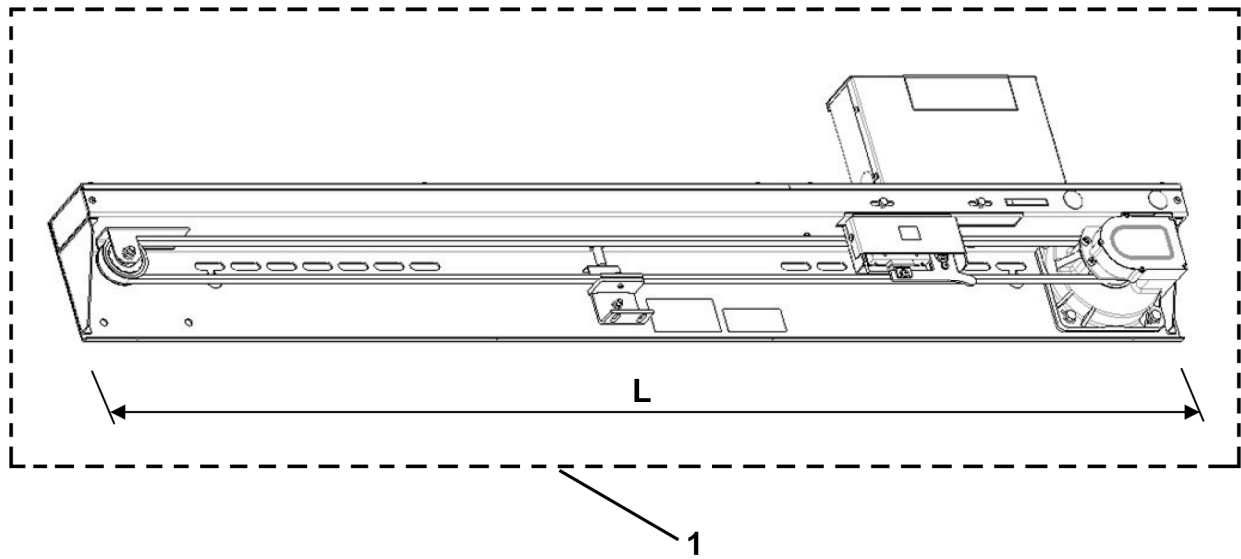
Document ID	Title
SPL 10-KAA24360ABG	Glide A Door Controller
SPL 19-AAA24600H	Car Door Hanger and Track
SPL 23-AAA24450AE	Glide Door Operator, C/O, S/S, 2/S
SPL 24-AAA24390N	Car Door Coupling
TIP 22.17.1-1	Otis Glide® A for Mod & Open Order—Specification and Ordering Guide
TIP 22.17.1-2	Otis Glide® A for Mod Mechanical Installation Guide
TIP 22.17.1-3	Otis Glide® A for Modernization and Open Order—Setup and Startup Manual
TIP 22.17.1-4	Otis Glide® A for Modernization Open Order—Open Order Upgrade and Retrofit
TIP 22.17.1-5	Otis Glide® A for Mod Service Tool User's Guide
TIP 22.17.1-7	OMU Software Upgrade Failure on Select Otis Glide® A Controllers
TIP 22.17.1-8	Otis Glide® A for Mod Open Order Upgrade—Electrical Installation on LRV/LRS Controllers

Subject Matter Expert

Name	Department
Peter Kelley	OSC, Service Engineering



AAA24350CE		
REF. No.	PAGE No.	DESCRIPTION
1	---	Controller, Door. See SPL 10-KAA24360ABG.
2	---	Coupler, Car Door. See SPL 24-AAA24390N.
3	4-5	Door Operator
4	---	Header Assembly. See SPL 19-AAA24600H.
5	11	Stop Switch Assembly

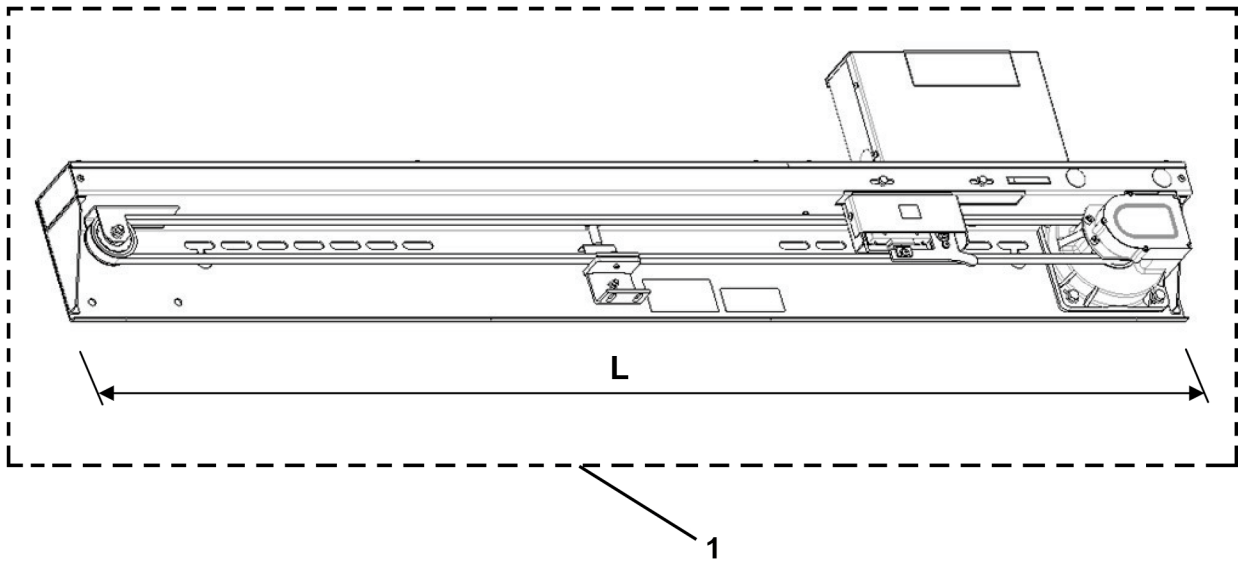


NOTE: See SPL 23-AAA24450AE for replacement Otis Glide A door operator.

AAA24350CE					
REF. No.	PART No.	HAND	OPENING WIDTH	L	DOOR TYPE
1	AAA24350CE15	Left	34–35 in. (863–889 mm)	57.25 in. (1454 mm)	2S
			30–35 in. (762–889 mm)	57.25 in. (1454 mm)	SS
	AAA24350CE7	Right	34–35 in. (863–889 mm)	57.25 in. (1454 mm)	2S
			30–35 in. (762–889 mm)	57.25 in. (1454 mm)	SS
	AAA24350CE13	Left	36–39 in. (914–991 mm)	59.4 in. (1508 mm)	2S & SS
	AAA24350CE5	Right			
	AAA24350CE11	Left	40–47 in. (1016–1194 mm)	66.25 in. (1682 mm)	
	AAA24350CE3	Right			
	AAA24350CE9	Left	48–60 in. (1219–1524 mm)	78.25 in. (1987 mm)	
	AAA24350CE4	Right			
	AAA24350CE16	Left	30–31 in. (762–787 mm)	57.25 in. (1454 mm)	CO
	AAA24350CE8	Right			
	AAA24350CE14	Left	32–38 in. (813–965 mm)	59.4 in. (1508 mm)	
	AAA24350CE6	Right			
	AAA24350CE12	Left	39–50 in. (991–1270 mm)	66.25 in. (1682 mm)	
	AAA24350CE4	Right			
AAA24350CE10	Left	51–60 in. (1295–1524 mm)	78.25 in. (1987 mm)		
AAA24350CE2	Right				

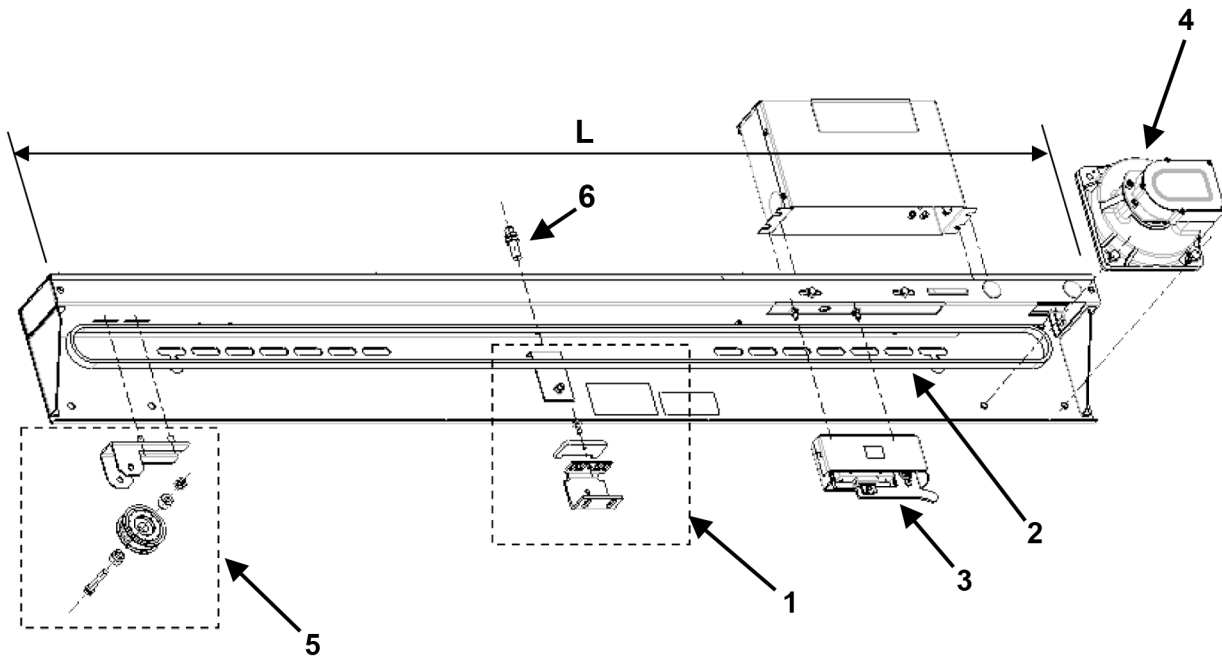
Glide A Door Operator, 135 W Motor

23-AAA24350CE



NOTE: See SPL 23-AAA24450AE for replacement Otis Glide A door operator.

		AAA24350CE			
REF. No.	PART No.	HAND	OPENING WIDTH	L	DOOR TYPE
1	AAA24350CE34	Left	34–35 in. (863–889 mm)	57.25 in. (1454 mm)	2S
			30–35 in. (762–889 mm)	57.25 in. (1454 mm)	SS
	AAA24350CE23	Right	34–35 in. (863–889 mm)	57.25 in. (1454 mm)	2S
			30–35 in. (762–889 mm)	57.25 in. (1454 mm)	SS
	AAA24350CE29	Left	36–39 in. (914–991 mm)	59.4 in. (1508 mm)	2S & SS
	AAA24350CE24	Right			
	AAA24350CE27	Left	40–47 in. (1016–1194 mm)	66.25 in. (1682 mm)	
	AAA24350CE19	Right			
	AAA24350CE25	Left	48–60 in. (1219–1524 mm)	78.25 in. (1987 mm)	
	AAA24350CE17	Right			
	AAA24350CE32	Left	30–31 in. (762–787 mm)	57.25 in. (1454 mm)	CO
	AAA24350CE24	Right			
	AAA24350CE30	Left	32–38 in. (813–965 mm)	59.4 in. (1508 mm)	
	AAA24350CE22	Right			
	AAA24350CE28	Left	39–50 in. (991–1270 mm)	66.25 in. (1682 mm)	
	AAA24350CE20	Right			
AAA24350CE26	Left	51–60 in. (1295–1524 mm)	78.25 in. (1987 mm)		
AAA24350CE18	Right				

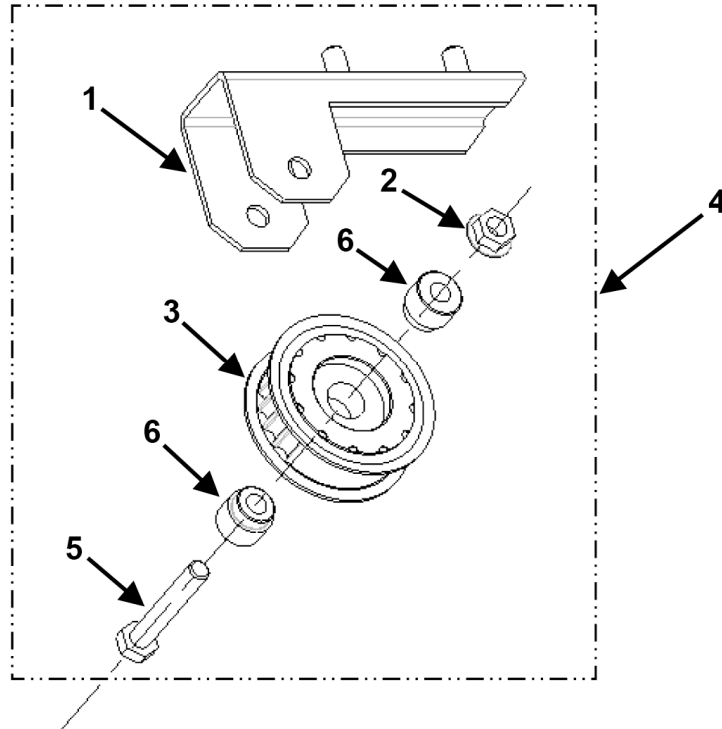


Right Hand Shown

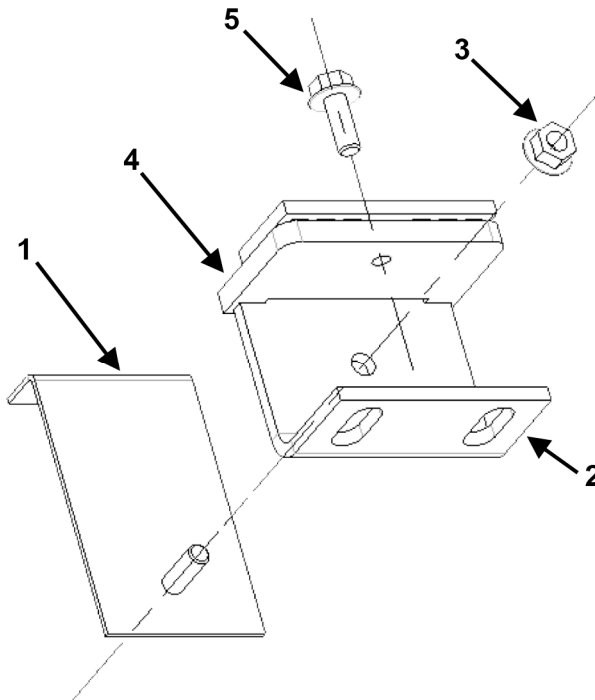
AAA24350CE			
REF. No.	PART No.	DESCRIPTION	LENGTH
1	---	Belt Hitch. See Page 8.	---
2	KAA717AAL41	Belt. For operator length 57.25 in. (1454 mm).	9 ft. (2752 mm)
	KAA717AAL42	Belt. For operator length 59.4 in. (1508 mm).	9.4 ft. (2856 mm)
	KAA717AAL43	Belt. For operator length 66.25 in. (1682 mm).	10.5 ft. (3208 mm)
	KAA717AAL44	Belt. For operator length 78.25 in. (1987 mm).	12.5 ft. (3816 mm)
3	---	Gate Switch. See Page 10.	---
4	KAA24354AAX132	Motor Assembly, 135 W, Left Hand. For Glide A Operator.	---
	KAA24354AAX32	Motor Assembly, 135 W, Right Hand. For Glide A Operator.	---
	KAA24354AAV132	Motor Assembly, 90 W, Left Hand. For Glide S Operator.	---
	KAA24354AAV32	Motor Assembly, 90 W, Right Hand. For Glide S Operator.	---
5	---	Pulley Assembly. See Page 7.	---
6	AAA24431H7 AAA608D12	Sensor, Proximity, DCP	---

Idler Pulley Assembly

23-AAA24350CE



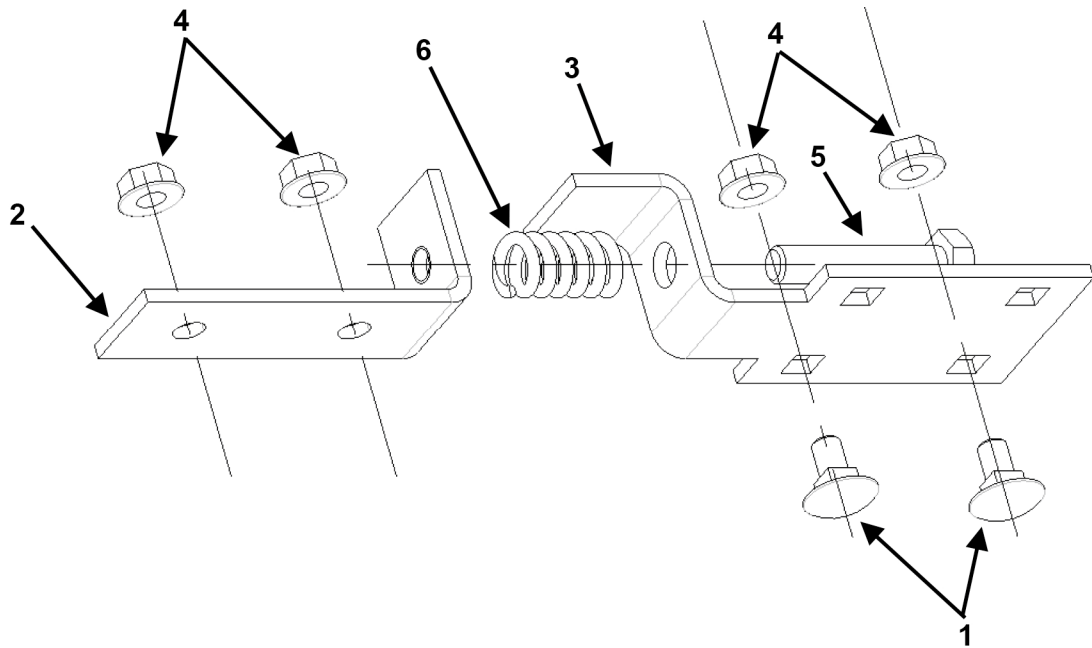
AAA24350CE		
REF. No.	PART No.	DESCRIPTION
1	AAA347CHS2	Channel, Formed
2	---	Nut, Hex, M8, Serrated Flange
3	KAA198ABN3	Pulley
4	AAA198BL1	Pulley Assembly
5	---	Screw, Hex Head, M8x50
6	AAA462DH2	Spacer (2 per Assembly Required)



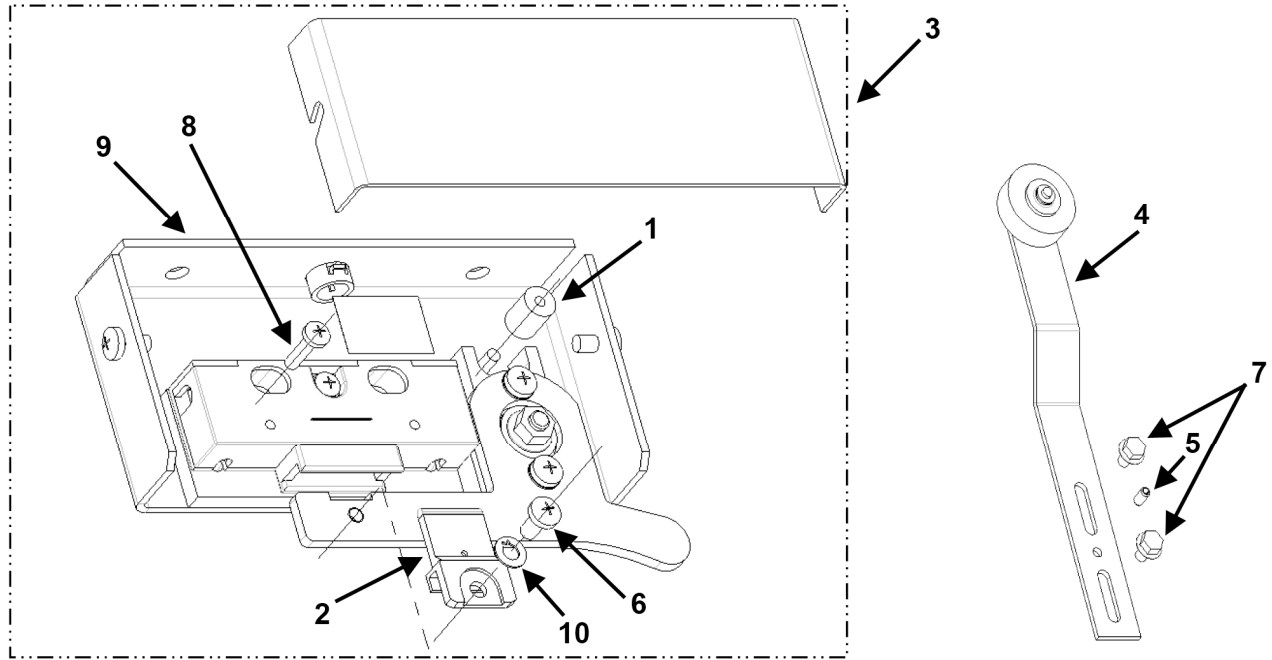
AAA24350CE		
REF. No.	PART No.	DESCRIPTION
1	AAA283BKY2	Angle, Formed
2	AAA392DY1	Hitch
3	---	Nut, Hex, Serrated Flange, M6
4	AAA386LQC1	Plate
5	---	Screw, Hex Head, Serrated Flange, M6x16


Belt Tension Assembly

23-AAA24350CE



AAA24350CE		
REF. No.	PART No.	DESCRIPTION
1	---	Bolt, Carriage, M8x16 (2 per Assembly Required)
2	AAA283BKZ1	Bracket, Angle, Formed
3	AAA513CB1	Bracket, Z Shape, Formed
4	---	Nut, Hex, Serrated Flange, M8 (4 per Assembly Required)
5	---	Screw, Hex Head, M10x50
6	AAA90EW1	Spring



AAA24350CE		
REF. No.	PART No.	DESCRIPTION
1	AAA320GJ2	Bumper
2	KAA156AAA1	Contact
3	AAA25590AH2	Gate Switch Assembly, Left Hand
	AAA25590AH1	Gate Switch Assembly, Right Hand
4	 SPL 23-AAA24450AE	Gate Switch Roller Arm Assembly
5	---	Pin, Spring, 5x10
6	---	Screw, Pan Head, M5x10
7	---	Screw, Hex Head, Serrated Flange, M6x10
8	---	Screw, Pan Head, M4x16
9	KAA661AAQ4	Switch
10	---	Washer, Lock, Internal Tooth, M5

NOTE: Gate switch hand may be reversed by relocating pivot and switch.