

# Hoistway Entrance

Spare Parts Leaflet

25-AAA23100AAB

November 27, 2019 / Page 1 of 22

**W/O  
VINTAGE**

← From 5/13/1988 - 10/15/04

## Flush Entrances

25 R - ACA23100AAB

Center-Opening Doors  
i-Motion II / AT400

25 R - ACA23100AAC

Single-Slide Door  
i-Motion II / AT400

25 R - AAA23100AAE

Two-Speed Doors  
OVL

25 R - ACA23100AAF

Two-Speed Doors  
i-Motion II / AT400

## Non-Flush Entrances

25 R - ACA23100P

Center-Opening Doors  
i-Motion II / AT400

25 R - ACA23100R

Single-Slide Door  
i-Motion II / AT400

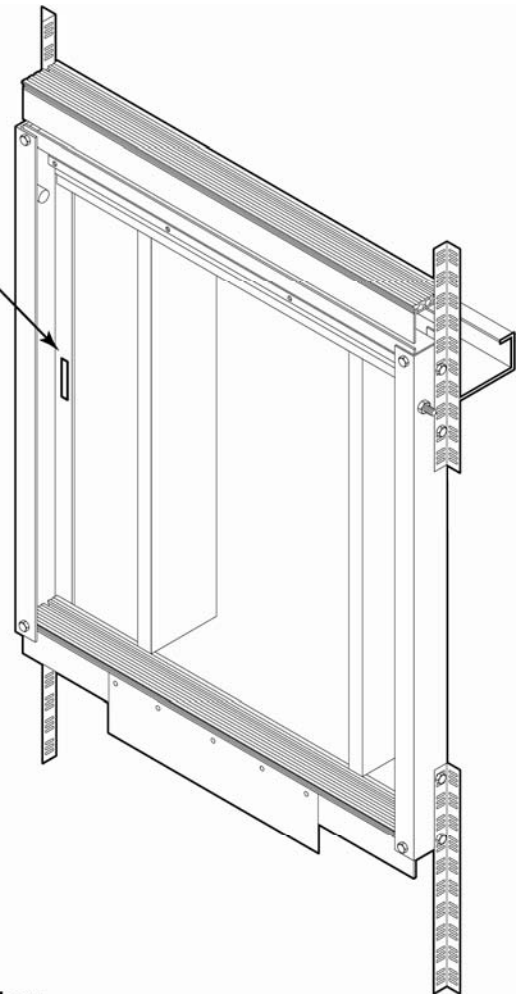
25 R - ACA23100S

Two-Speed Doors  
i-Motion II / AT400 Operator

25 R - AAA23100J

Two-Speed Doors  
OVL

Vintage Tag



# OTIS

This document does not contain any technical data subject to EAR or ITAR

SERVICE ENGINEERING  
Otis Elevator Company  
Bloomfield, Connecticut USA

Unpublished Work—© Otis Elevator Co.; 2019

## Leaflet Description

This entrance assembly SPL reflects LRUs that support the new “Weldless” doors for center-opening (C/O), single-slide (S/S), and two-speed (2-SP) openings for both “Flush” and “Non-Flush” hoistway entrances. Flush and non-flush pertains to hoistway sill construction types. Flush mount sills are anchored with support brackets to vertical hoistway walls. Non-flush sill mounting has the sill supported by brackets fastened to a sill ledge (concrete or steel), which is then backfilled with concrete grout.

It also will reflect many LRU parts from hoistway entrances built to “\*” drawings referenced below. The ABA revisions of these drawings were never released for production, so no reference is contained for that vintage. This leaflet covers hoistway entrance production beginning around 1989.

## Leaflet Revisions

Date Revised	Subject Matter Expert	Reason for Revision
December 6, 2005	Jeffrey A. Smith	New SPL
August 29, 2012	Brian Regan	Added p. 22
November 27, 2019	Peter Kelley	Revised history page

## Related Drawings

Drawing No.	Title	Drawing No.	Title
A*A23100AAB	Hoistway Entrance QL Flush Center-Opening	A*A23100R	Hoistway Entrance Non-Flush Single-Slide i-Motion II /AT400 operator)
A*A23100AAC	Hoistway Entrance Flush Single-Slide	A*A23100S	Hoistway Entrance Non-Flush Two-Speed i-Motion II /AT400 operator)
AAA483W F	Track	A*A23100E	Entrance Interface Arrangement C/O
A*A23100AAF	Hoistway Entrance Flush Two-Speed i-Motion II /AT400 operator)	A*A23100AAE	Hoistway Entrance Flush Two-Speed OVL operator)
A*A23100P	Hoistway Entrance Non-Flush Center-Opening i-Motion II /AT400 operator)		

**\* All vintages of the drawing.**

## Related Documents

Document ID	Title
SPL 19-AAA6940BY	Auxiliary Door Stop
SPL 25-6178R	Integral Hanger Hoistway Door Systems Center-Opening, Single-Slide, Two-Speed
SPL 25-AAA23100Y	Hoistway (Weldless) Doors
SPL 25-AAA24479A	Car & Hoistway Door Rollers & Guides: Integral & Applied Hangers
SPL 26-AAA23402L	Weight Closer
SPL 27-AAA6940CA	Emergency Key Transmission
SPL 27-AAA694000	Emergency and Access Key Device for Entrance Height Less than 88.3 inches
SPL 32-AAA23102A	Jamb Mounted (Integral) Access/SES Keyswitch Assembly
SPL 32-AAA23500S	I Fixture (Applied) Access/SES Keyswitch Switch
SPL 32-AAA102AMS	Handicap Plate
SPL 32-AAA102ASA	Elevator Number Plate

## Subject Matter Expert

Name	Department
Peter Kelley	OSC Service Engineering

## About Spare Parts Leaflets...

This document lists the lowest replaceable units (LRUs) for the standard version of the product. The LRUs are chosen by a team of Otis associates representing engineering and manufacturing.

While goal of this document is to make parts identification as easy as possible, the document cannot be all-inclusive. Elevator and escalator contracts classified as “special” or “custom” are not addressed here. For such contracts, please refer to specified information, the contract folder, TIPs, Field Education Articles, Construction Letters, etc. for further information.

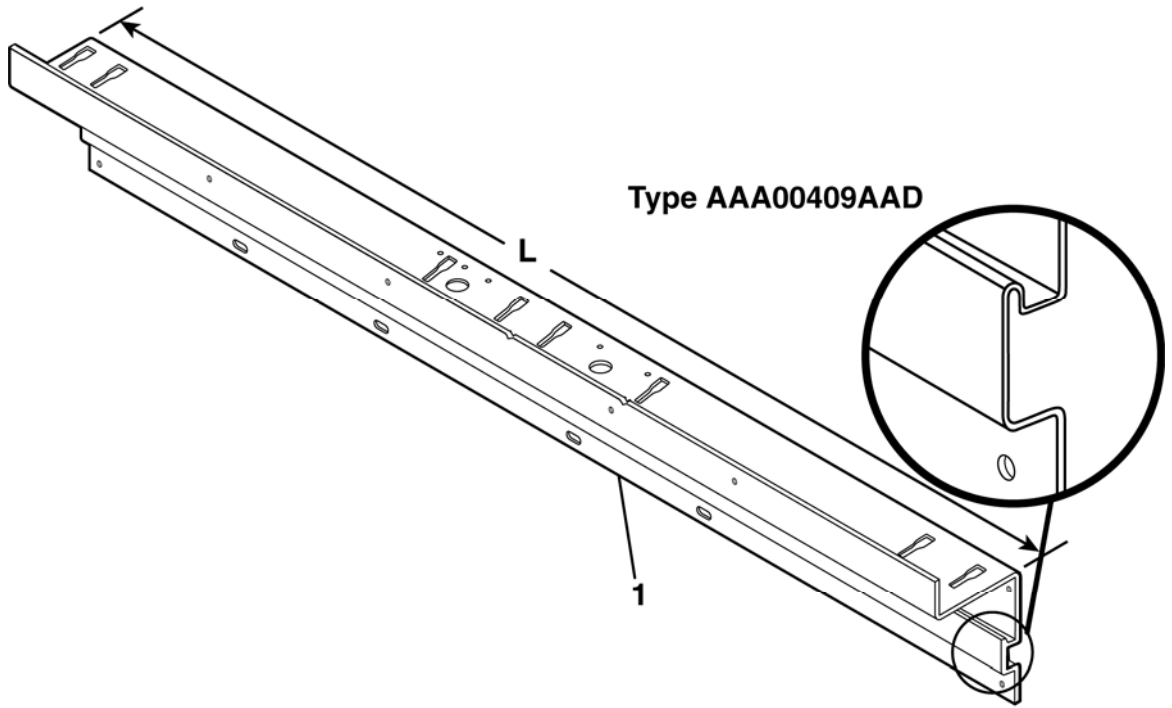
If you have any suggestions about this document, please contact the subject matter expert listed on this page.

# Header w/Integral Track

## Center-Opening Doors

### Standard Opening Sizes

25-AAA23100AAB

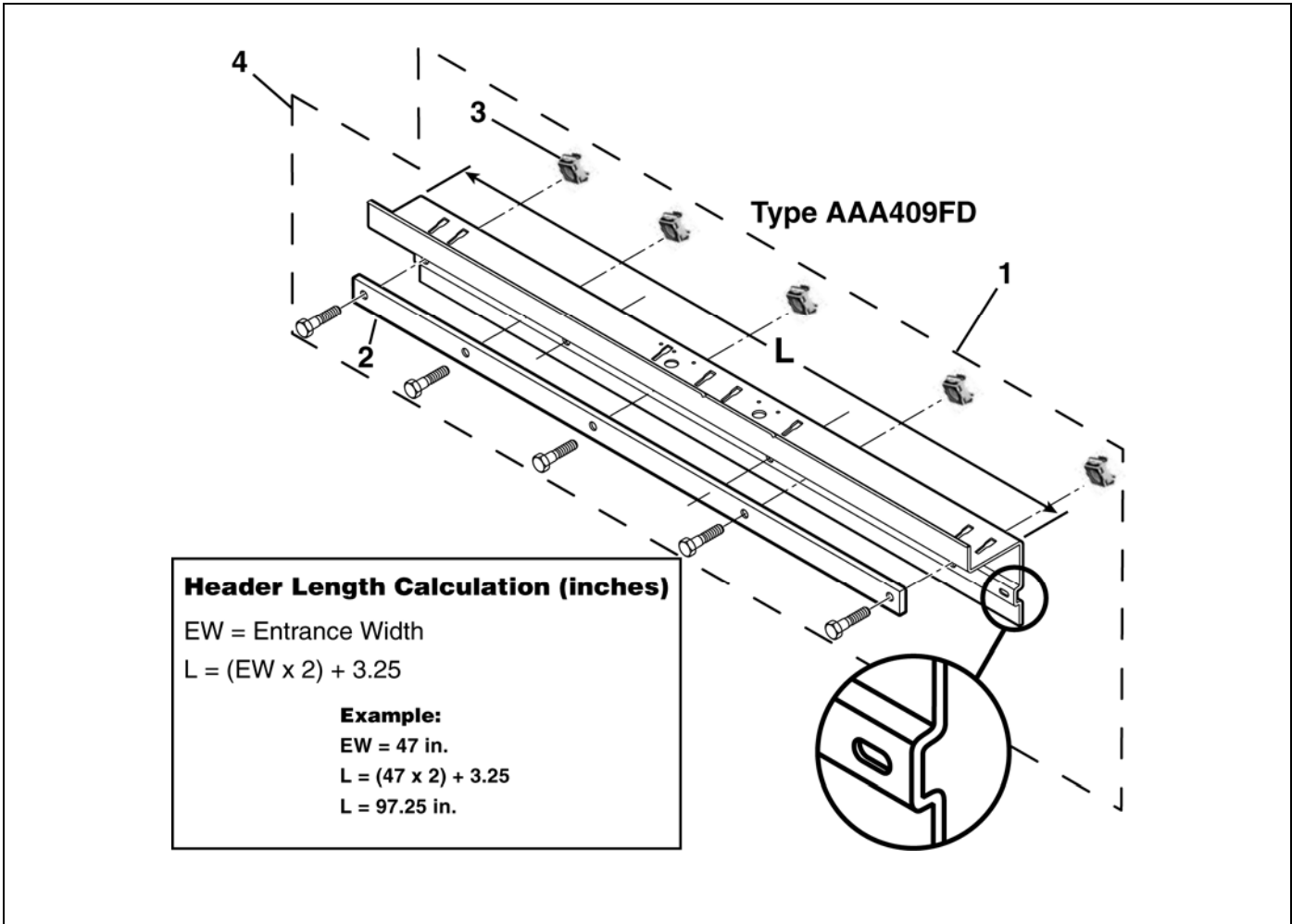


**Header Length Calculation (inches)**  
 EW = Entrance Width  
 $L = (EW \times 2) + 3.25$

	ACA23100P ACA23100AAB			
REF. No.	PART No.	DESCRIPTION	ENTRANCE WIDTH	LENGTH
1	AAA00409AAD008	Header, Hoistway, with Integral Track	36.0 in.	75.2 in.
	AAA00409AAD009		42.0 in.	87.2 in.
	AAA00409AAD010		48.0 in.	99.2 in.
	AAA483XB999-106	Header, Shape ( SEE formula), field to cut to length and drill holes as needed		

25-AAA23100AAB

# Header w/Applied Track Center-Opening Doors Variable Opening Sizes



	ACA23100P ACA23100AAB					
REF. No.	Part Number	Description	REMARKS			
1	AAA409FD997-___	Header Assembly	<b>Manual</b> <table border="1" style="display: inline-table; vertical-align: middle;"><tr><td>ORDER</td></tr><tr><td> </td></tr><tr><td> </td></tr></table> <b>w/Cutouts (see NOTE)</b> Indicate the desired length to your OSC Customer Service Representative (use formula above and example below). Special order. Not in stock.	ORDER		
ORDER						
2	---	Track, See P.10				
3	72DJ3	Nut, Grip				
4	AAA00409AAD997-___	Header w/Cutouts <b>See NOTE</b>				
	AAA50ANE1-106	Header, Shape, 106 in. L, (see formula, order size closest but not less than needed), Field cut to length and drill holes as needed.				

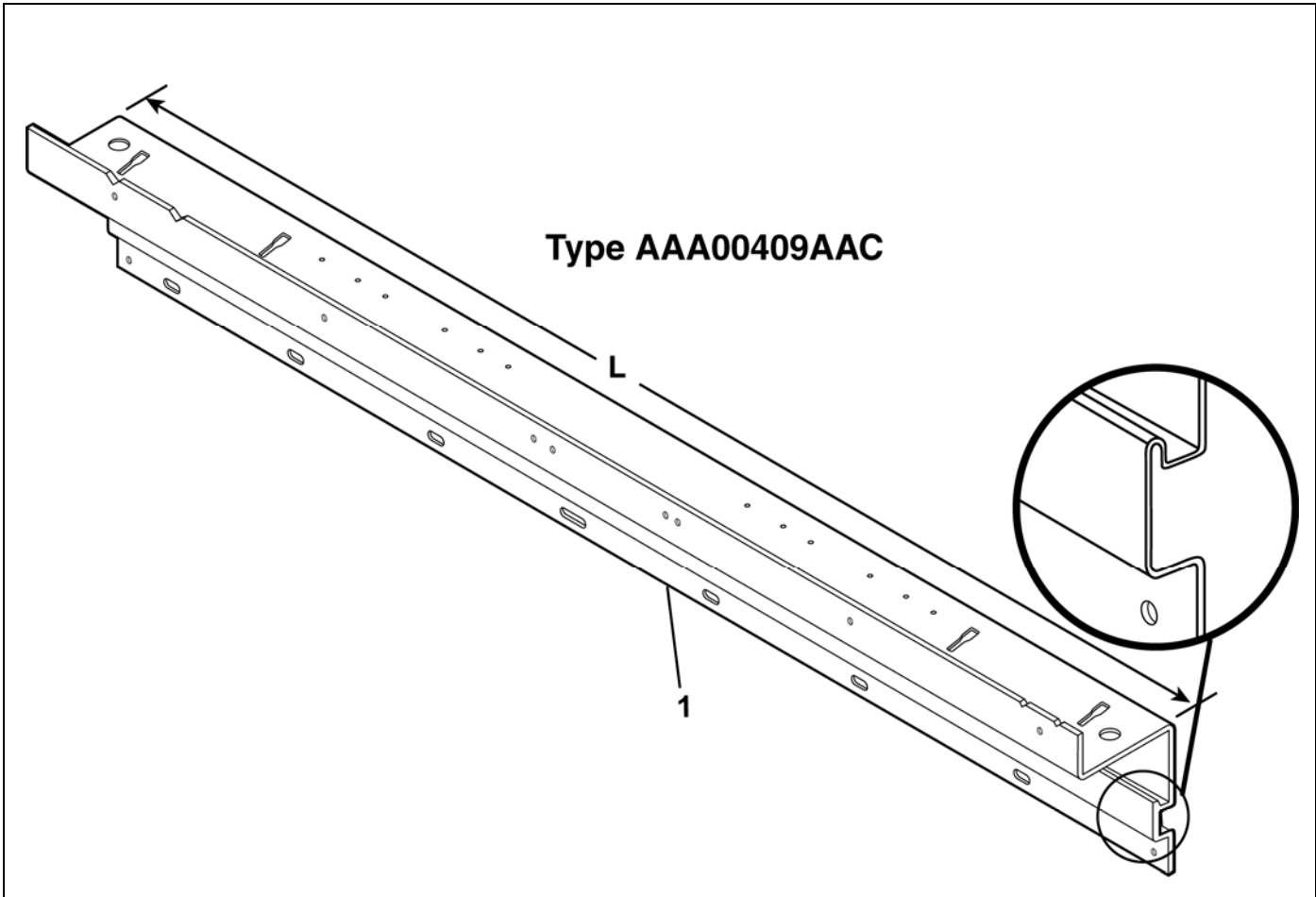
**NOTE:** Complete the part number with a length (see example).

# Header w/Integral Track

## Single-Slide Doors

### Standard Opening Sizes

25-AAA23100AAB

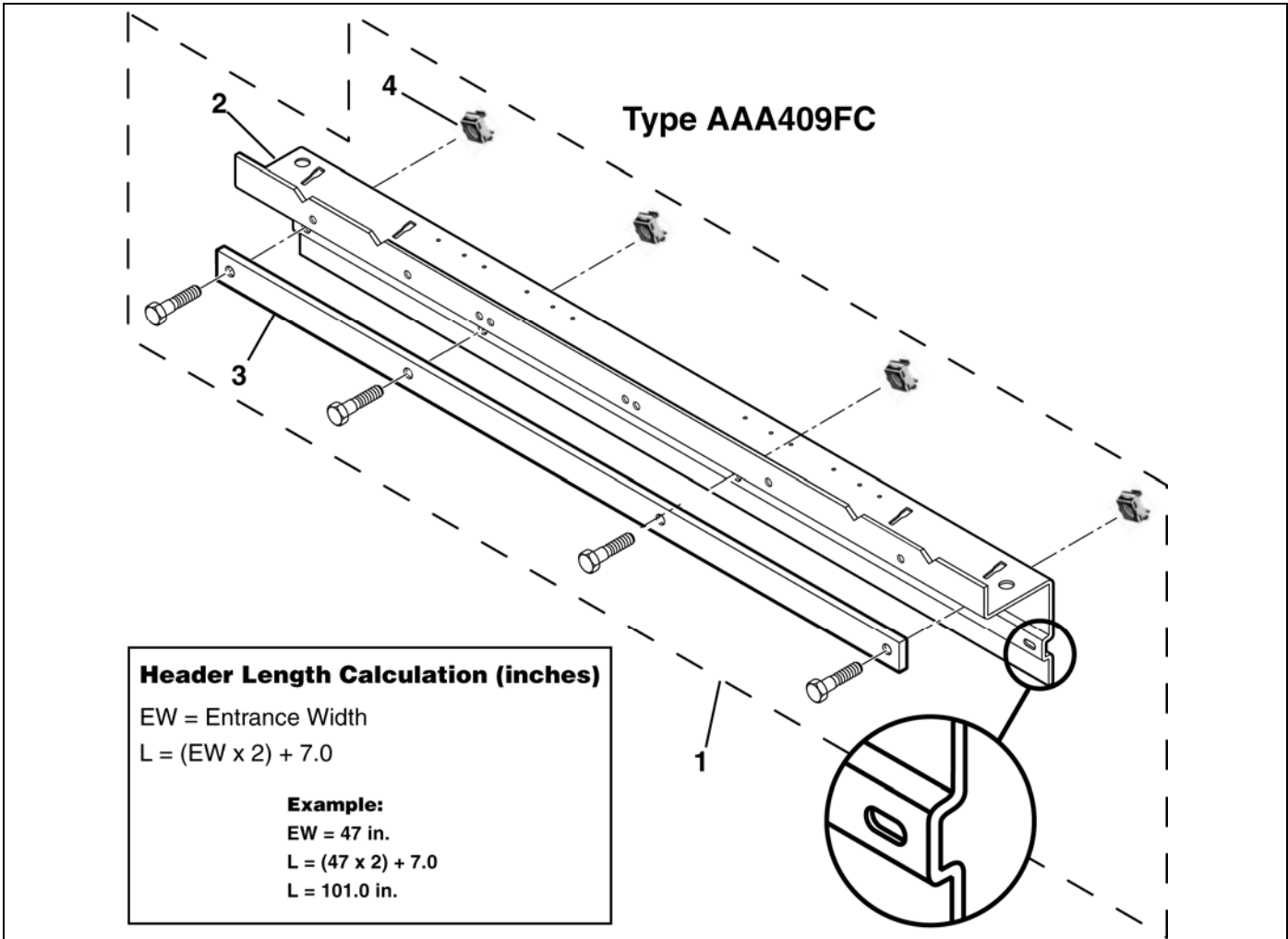


**Header Length Calculation (inches)**  
 EW = Entrance Width  
 $L = (EW \times 2) + 7.0$

	ACA2310OR ACA23100AAC			
REF. No.	PART No.	DESCRIPTION	Entrance Width	Length
1	AAA00409AAC006	Header, with Integral Track	32.0 in.	71.0 in.
	AAA00409AAC007		36.0 in.	79.0 in.
	AAA00409AAC008		42.0 in.	91.0 in.
	AAA483XB999-106	Header, Shape (see formula, order size closest but not less than needed). Field cut to length and drill holes as needed.		

25-AAA23100AAB

# Header w/Applied Track Single-Slide Doors Variable Opening Sizes

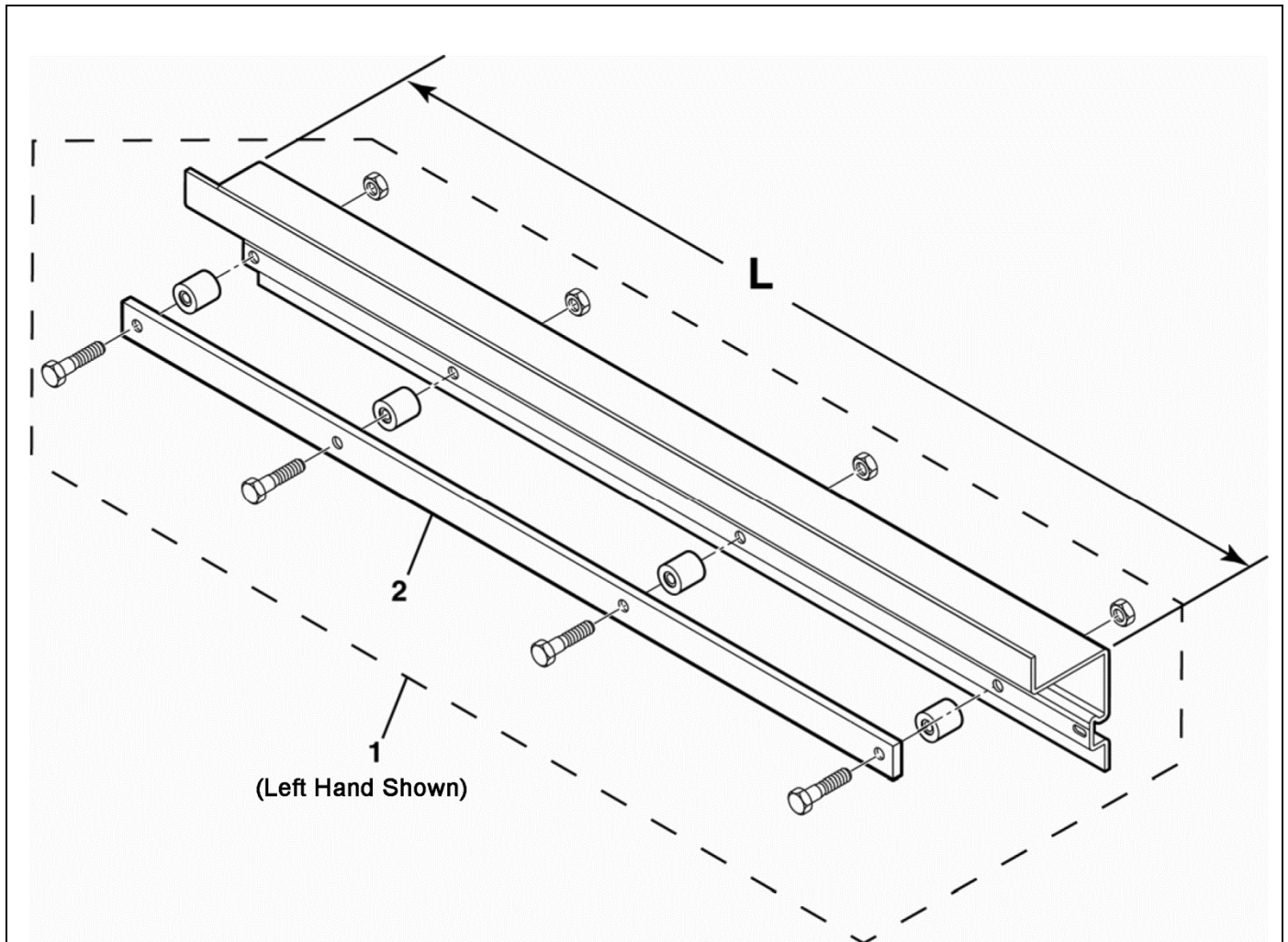


	ACA2310OR			
	ACA23100AAC			
REF. No.	Part Number	Description	TYPE	REMARKS
1	AAA409FC992-__	Assembly, Header		<b>Manual</b> <b>w/Cutouts (see NOTE).</b> Indicate the desired length to your OSC Customer Service Representative (use formula above and example below). Special order. Not in stock.
	AAA409FC993-__			
2	AAA409FC997-__	Header, w/Cutouts <b>see NOTE</b>		
	AAA50ANE1-106	Header, Shape, 106 in. L, (see formula, order size closest but not less than needed). Field cut to length and drill holes as needed.		
3	---	Track, see p.10		
4	72DJ3	Nut, Grip		

**NOTE:** Complete the part number with a length (see example).

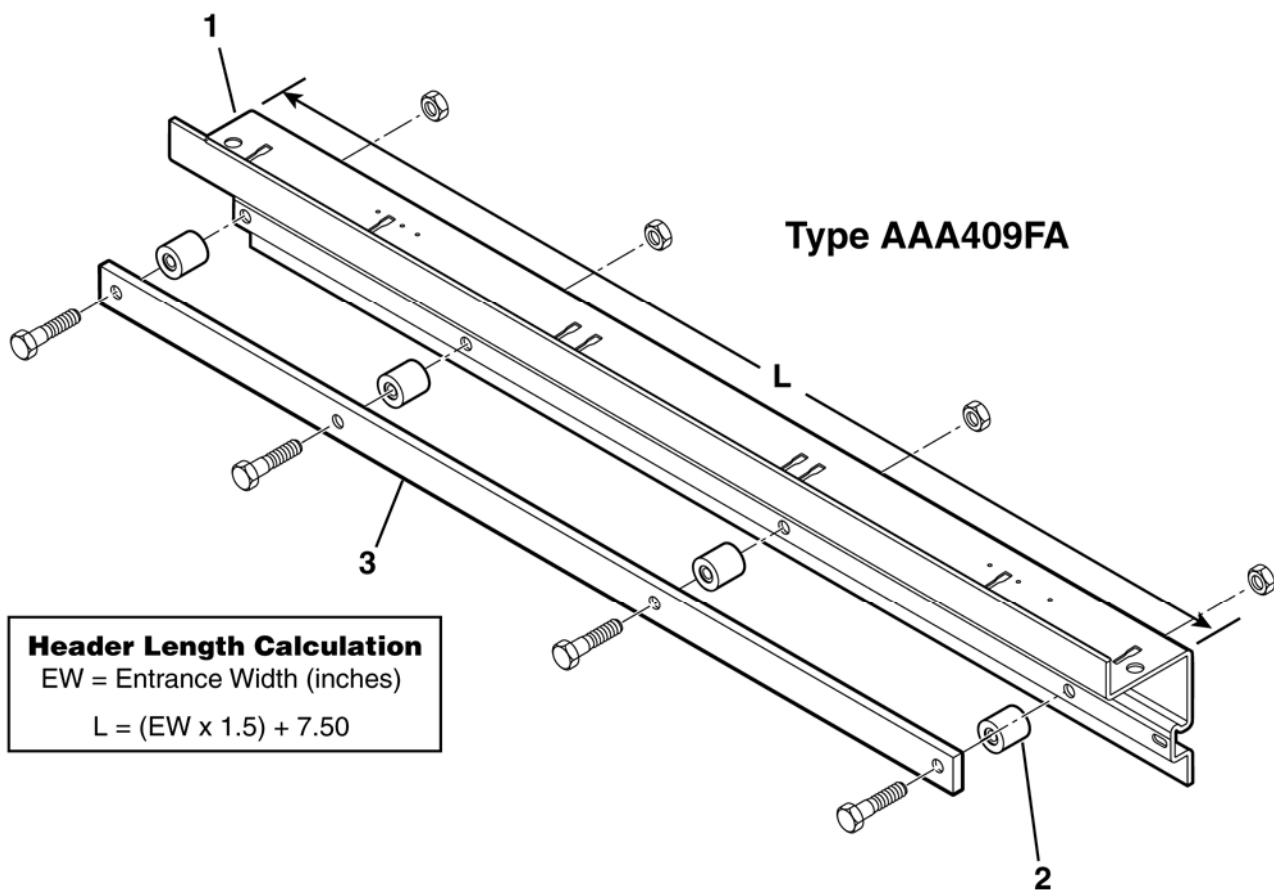
# Header, Two-Speed Doors Standard Opening Sizes

25-AAA23100AAB



REF. No.	PART No.	DESCRIPTION	DOOR HAND	LENGTH (L)	ENTRANCE WIDTH
	ACA23100S ACA23100AAF				
1	AAA409FA11	Assembly, Header and Applied Track, Two-Speed Doors		70.5 in.	42.0 in.
	AAA409FA12				
	AAA409FA13			79.5 in.	48.0 in.
	AAA409FA14				
	AAA409FA15			88.5 in.	54.0 in.
	AAA409FA16				
2	---	Track, see p.11			

# Header Assembly, 2-Speed Doors Standard Opening Sizes



**Header Length Calculation**

EW = Entrance Width (inches)

$$L = (EW \times 1.5) + 7.50$$

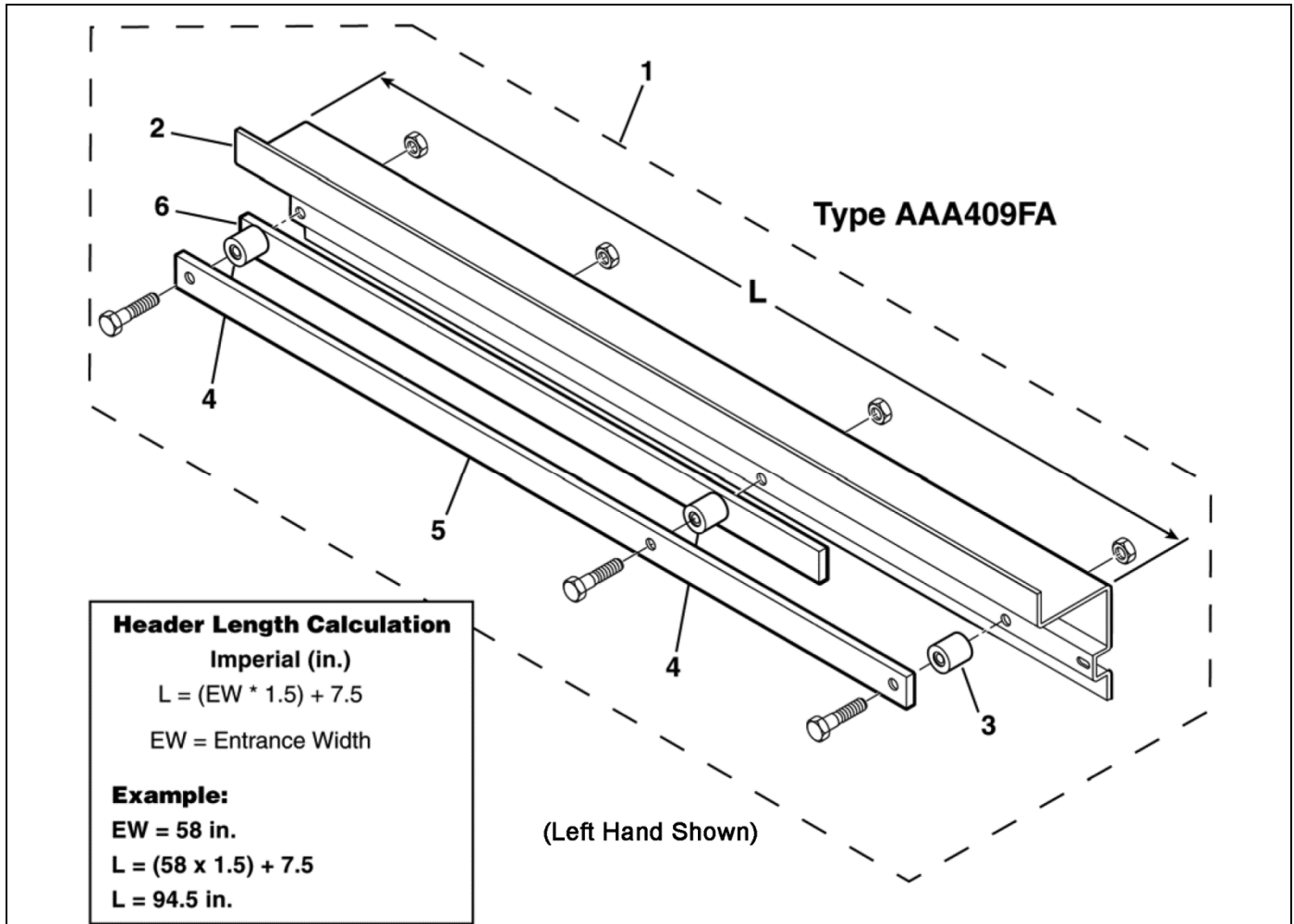
REF. No.	PART No.	DESCRIPTION	Entrance Width	Length
	ACA23100S ACA23100AAF			
1	ABA00409AAJ006	Header	42.0 in.	70.5 in.
	ABA00409AAJ007		48.0 in.	79.5 in.
	ABA00409AAJ008		54.0 in.	88.5 in.
2	AAA462HR3	Spacer, 26.9 mm L		
3	---	Track, Fast (see p.11)		



# Header Assembly, Two-Speed Doors

## Variable Opening Sizes

25-AAA23100AAB



**Header Length Calculation**  
**Imperial (in.)**  
 $L = (EW \times 1.5) + 7.5$   
 EW = Entrance Width

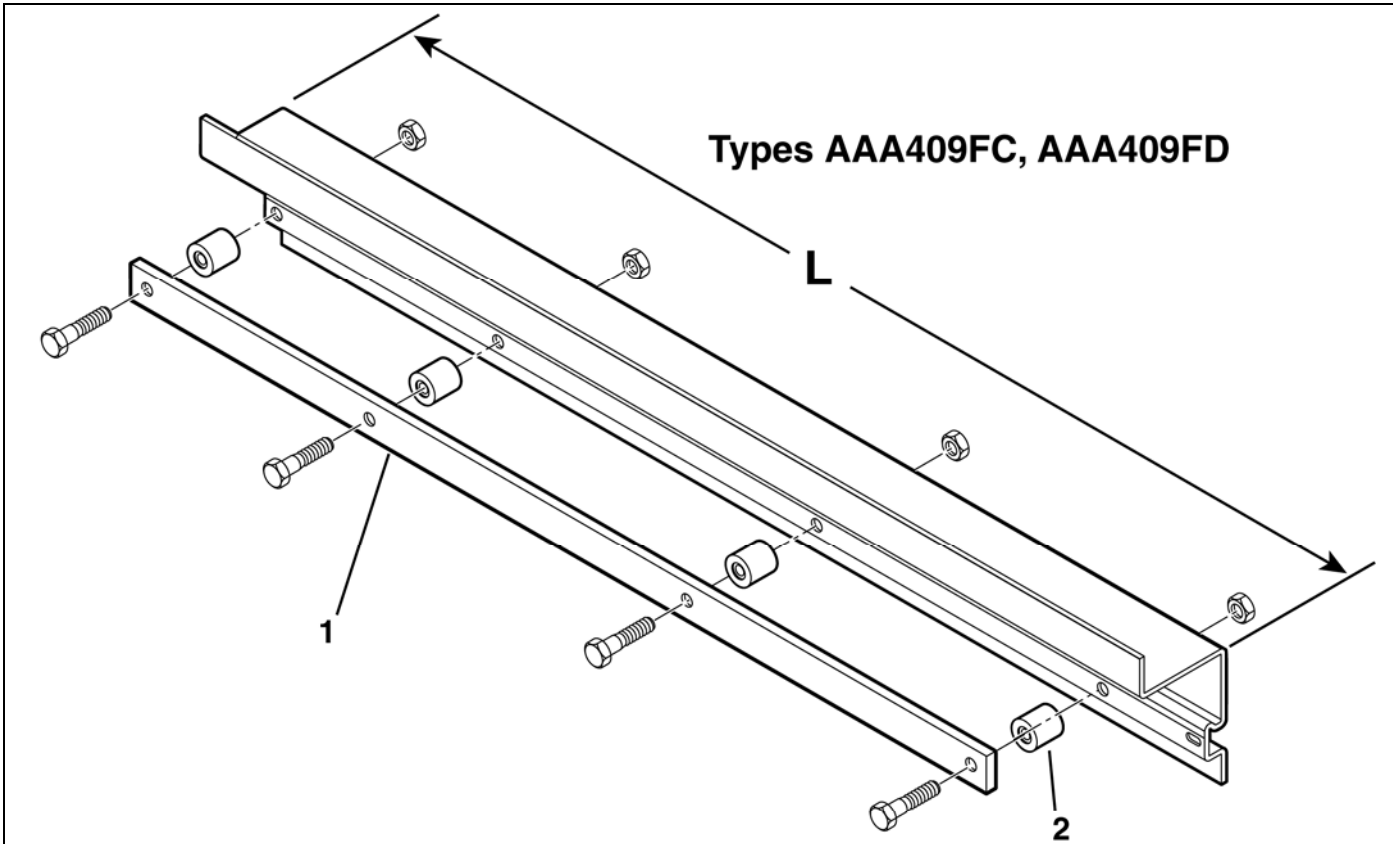
**Example:**  
 EW = 58 in.  
 $L = (58 \times 1.5) + 7.5$   
 L = 94.5 in.

	ACA23100S ACA23100AAF			
REF. No.	PART No.	DESCRIPTION	DOOR HAND	
1	AAA409FA994-__	Header Assembly (variable length) W → Applied Track	Manual <table border="1" style="display: inline-table; vertical-align: middle;"><tr><td>ORDER</td></tr></table> w/Cutouts (see NOTE)	ORDER
	ORDER			
AAA409FA995-__	Indicate the desired length to your OSC Customer Service Representative (use formula above and example below). Special order. Not in stock.			
2	AAA00409AAJ997-__	Header, Formed w/Integral Track, w/Cutouts <b>See NOTE</b>	 	
	AAA483XB997-106	Header, Formed, w/Integral Track, w/o Cutouts, 106 in. L, Field  to suit		
3	AAA462HR3	Spacer, 26.9 mm L		
4	AAA462HR4	Spacer, 39.6 mm L		
5	---	Track, Fast (see p.11)		
6	---	Track, Slow (see p.11)		

**NOTE:** Complete the part number with a length (see example).

# Applied Tracks

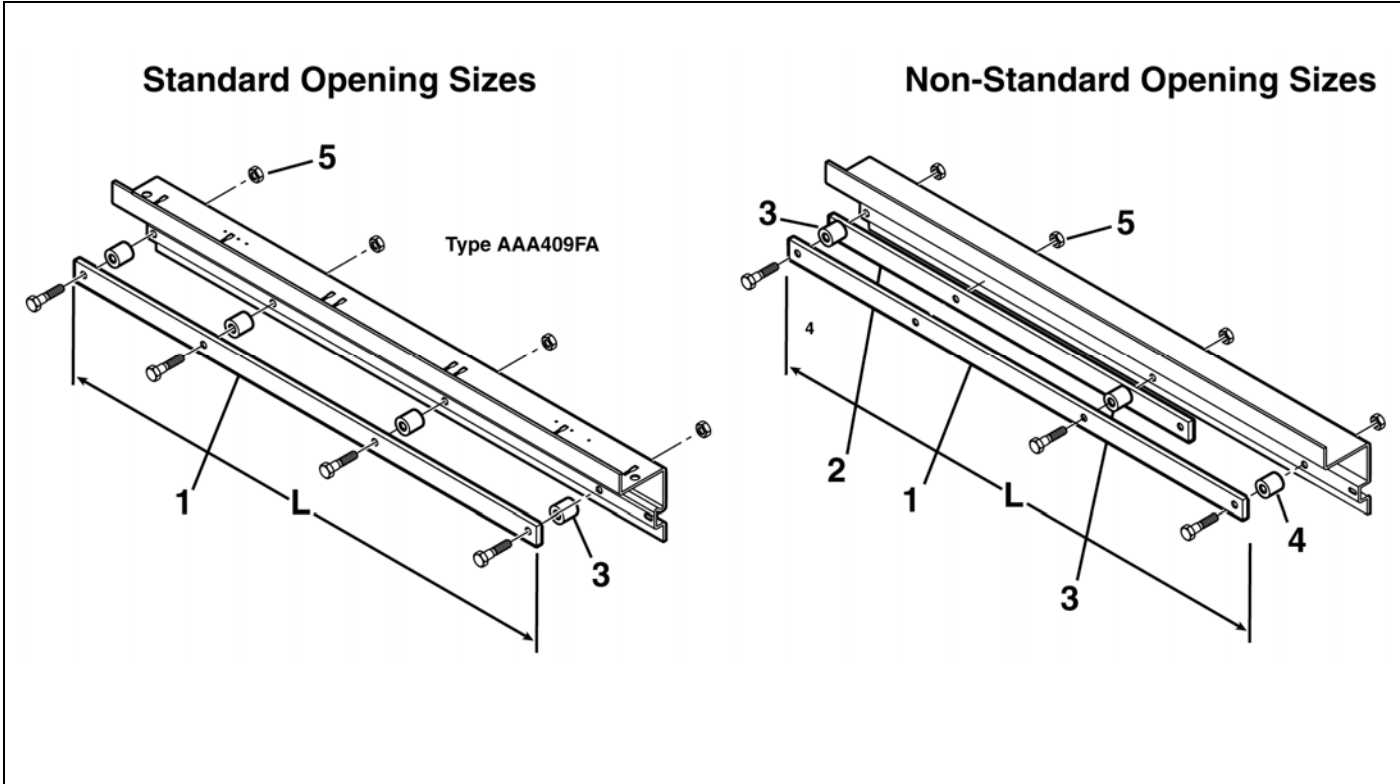
## Single-Slide & Center-Opening



Track Length Calculation (in.)		Example:
EW = Entrance Width		
Door Type	Formula	EW = 49 in.
Center Opening	$L = EW * 2$	$L = 49 \text{ in.} \times 2, L = 98 \text{ in.}$
Single-Slide	$L = (EW * 2) + 2.0$	$L = (49 \text{ in.} \times 2) + 2.0, L = 100 \text{ in.}$

REF. No.	PART No.	DESCRIPTION	LENGTH	TRACK TYPE
1	AAA483RY999-__	Track, with Cutouts	<b>SEE NOTE</b>	C/O, S/S
	50ADF1-64	Track, 64 in. L	Field cut to suit. Order closest but not less than needed.	
	50ADF1-75	Track, 75 in. L		
	50ADF1-76	Track, 76 in. L		
	50ADF1-81	Track, 81 in. L		
	50ADF1-85.88	Track, 85.88 in. L		
	50ADF1-98	Track, 98 in. L		
	50ADF1-162	Track, 162 in. L		
50ADF1-183	Track, 183 in. L			
2	AAA462HR3	Spacer, 26.9 mm L	---	---

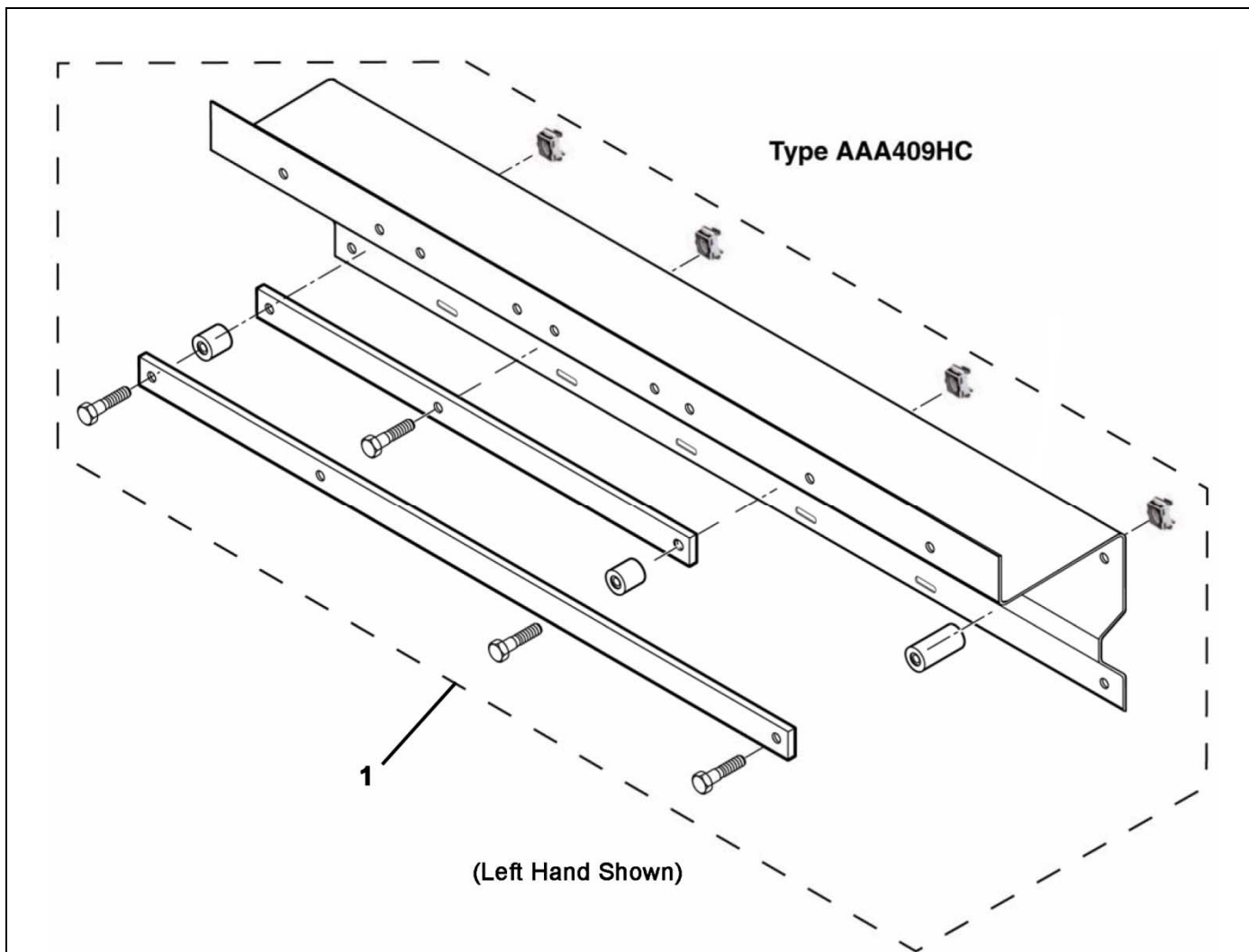
**NOTE:** Complete the part number with a length (see example).



REF. No.	PART No.	DESCRIPTION		ENTRANCE WIDTH	TRACK LENGTH	TRACK TYPE	
1	AAA483WF5	Track, w/Cutouts (fast door)		42.0 in.	65.0 in.	2/S Fast	
	AAA483WF6			48.0 in.	74.0 in.		
	AAA483WF9			54.0 in.	83.0 in.		
	AAA483WF998-___	Track, Fast	Variable, Manual <table border="1" style="display: inline-table; vertical-align: middle;"><tr><td>ORDER</td></tr></table> (see <b>NOTE</b> ) w/Cutouts. Indicate desired length to your OSC Customer Service Representative (use formula above).	ORDER	<b>SEE NOTE</b> Variable		2/S Slow
ORDER							
2	AAA483WF997-___	Track, Slow					
1 & 2	50ADF1-64	Track, 64 in. L	W/O mounting holes & cutouts. Order closest size but not less than needed. Field  to suit.				
	50ADF1-75	Track, 75 in. L					
	50ADF1-76	Track, 76 in. L					
	50ADF1-81	Track, 81 in. L					
	50ADF1-85.88	Track, 85.88 in. L					
	50ADF1-98	Track, 98 in. L					
	50ADF1-162	Track, 162 in. L					
50ADF1-183	Track, 183 in. L						
3	AAA462HR3	Spacer, 26.9 mm L,  Applied Fast-Door Track					
4	AAA462HR4	Spacer, 39.6 mm L					
5	72DJ3	Nut, Grip					

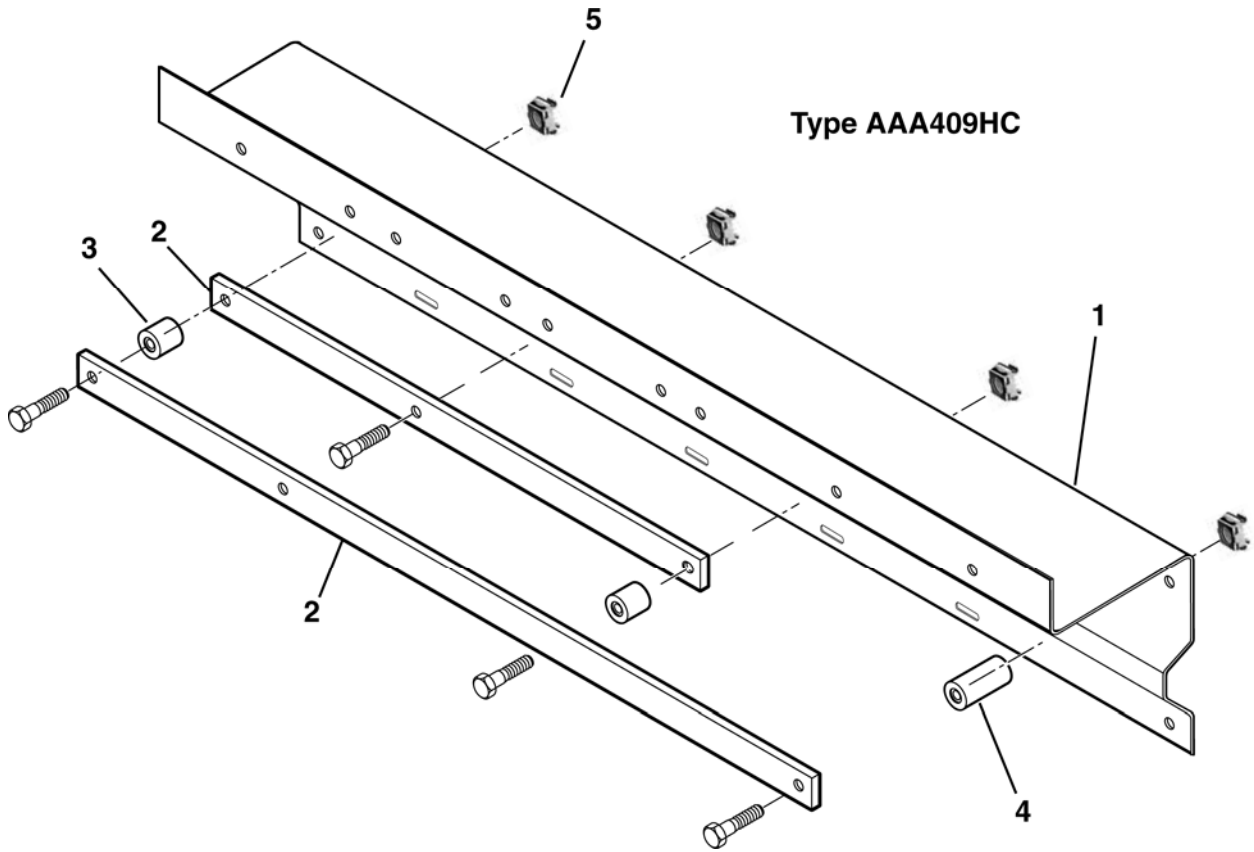
**NOTE:** Complete the part number with a length (see example).

Standard Opening Sizes



REF. No.	PART No.	DESCRIPTION	DOOR HAND	LENGTH	ENTRANCE WIDTH
	AAA23100J AAA23100AAE				
1	AAA409HC11	Assembly, Header and Applied Track, Two-Speed Doors		70.5 in.	42.0 in.
	AAA409HC12				
	AAA409HC13			79.5 in.	48.0 in.
	AAA409HC14				
	AAA409HC15			88.5 in.	54.0 in.
	AAA409HC16				

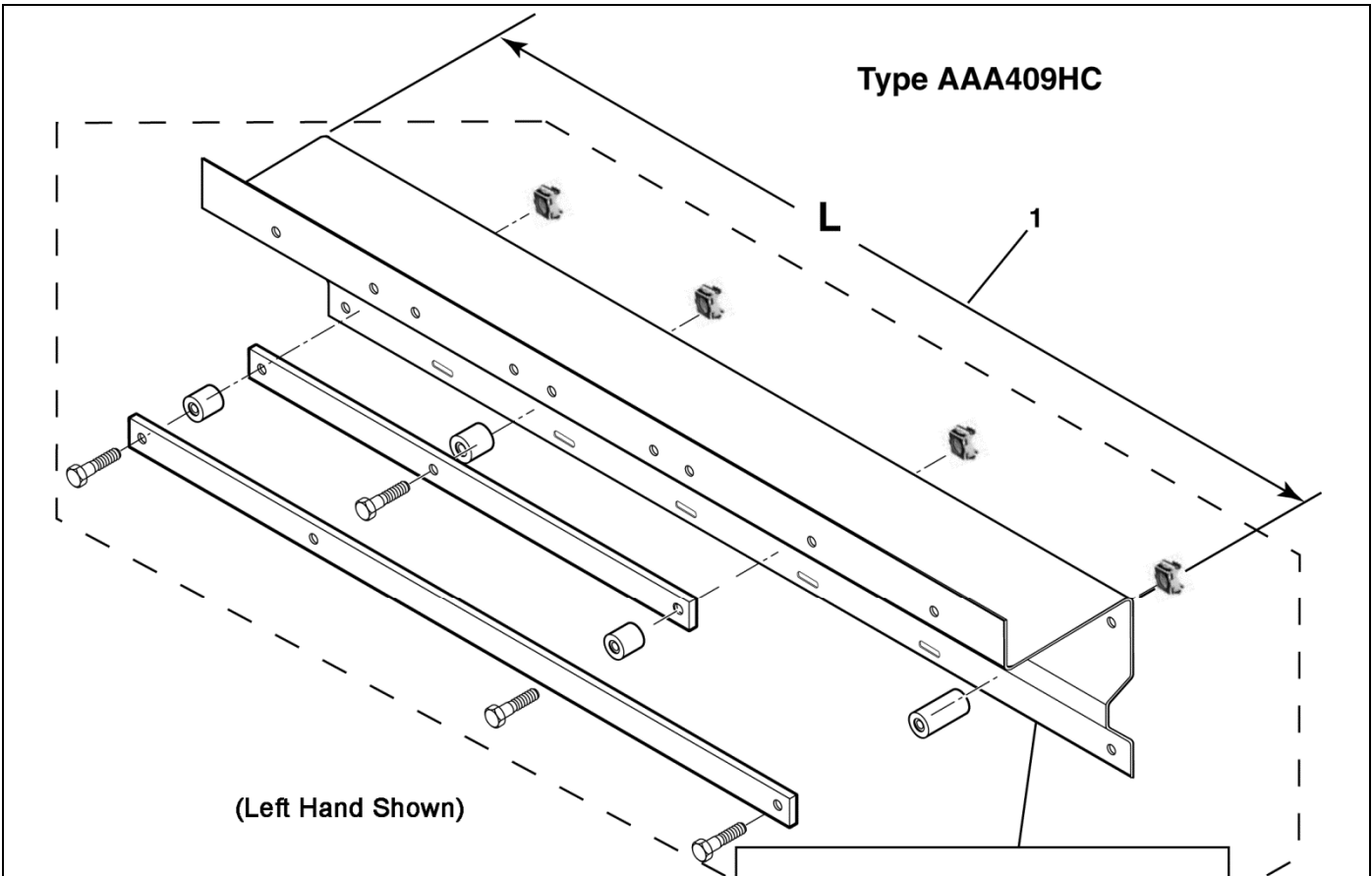
Standard Opening Sizes



AAA23100J  
AAA23100AAE

REF. No.	PART No.	DESCRIPTION	Entrance Width	Length
1	AAA409GZ6	Header (OVL Two-Speed Doors)	42.0 in.	70.5 in.
	AAA409GZ7		48.0 in.	79.5 in.
	AAA409GZ8		54.0 in.	88.5 in.
2	---	Track, see p. 16		
3	AAA462HR3	Spacer, 26.9 mm L		
4	AAA462HR4	Spacer, 39.6 mm L		
5	72DJ3	Nut, Grip		

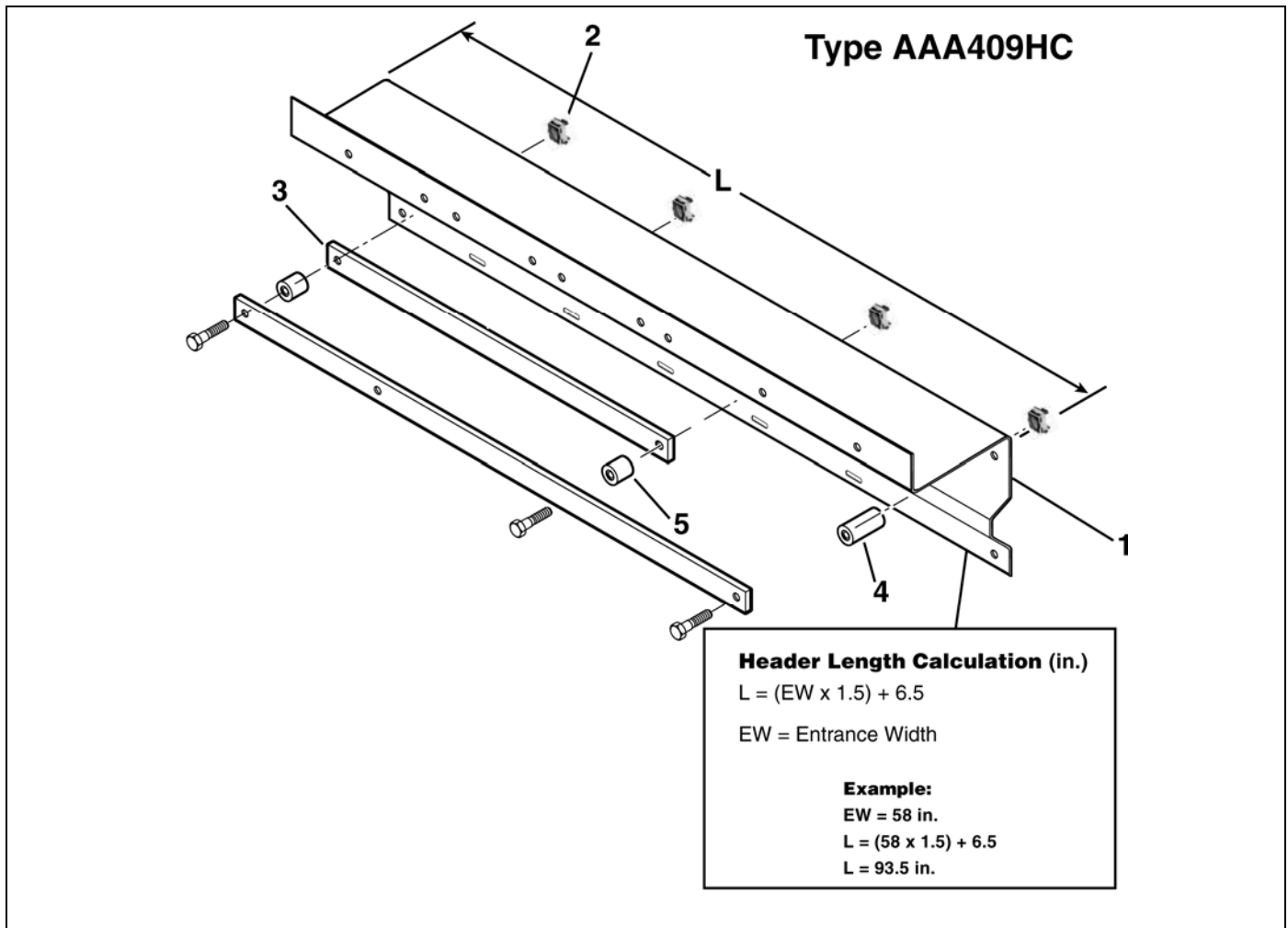
Variable Opening Sizes



**Header Length Calculation (in.)**  
 $(EW * 1.5) + 6.5$   
 EW = Entrance Width  
**Example:**  
 EW = 58 in.  
 $L = (58 \times 1.5) + 7.5$   
 L = 94.5 in.

REF. No.	PART No.	DESCRIPTION	DOOR HAND			
	AAA23100J AAA23100AAE					
1	AAA409HC994-__	<b>SEE NOTE</b> Header Assembly (variable length) Applied Track	Manual <table border="1" style="display: inline-table; vertical-align: middle;"><tr><td>ORDER</td></tr><tr><td> </td></tr><tr><td> </td></tr></table> w/Cutouts	ORDER		
	ORDER					
	AAA409HC995-__					

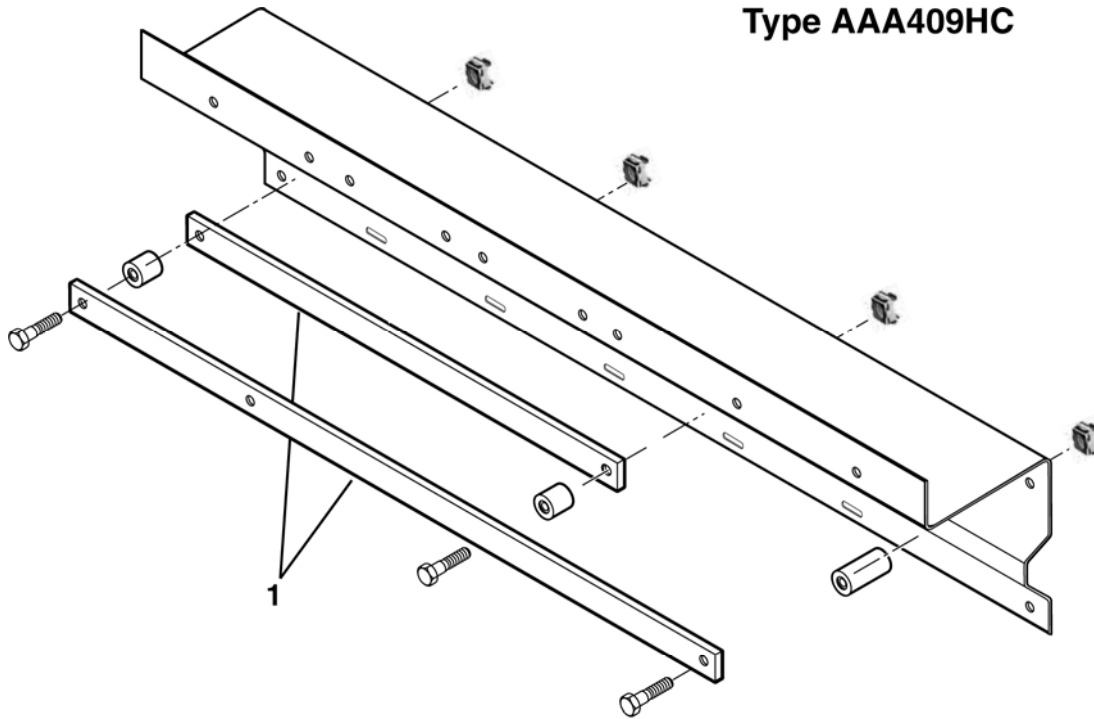
**NOTE:** Complete the part number with a length (see example).




	AAA23100J AAA23100AAE				
REF. No.	PART No.	DESCRIPTION	DOOR HAND		
1	AAA409GZ997-___	<b>SEE NOTE</b> Header (variable length) Applied Track	<b>Manual</b> <table border="1" style="display: inline-table; vertical-align: middle;"><tr><td>ORDER</td></tr></table> <b>w/Cutouts (see NOTE)</b> Indicate the desired length to your OSC Customer Service Representative (use formula above and example below). Special order. Not in stock.	ORDER	& 
	ORDER				
50ATD2-106	Header, Formed, w/o Cutouts, 106 in. L. Order closest size but not less than needed. Field  to suit.				
2	72DJ3	Nut, Grip			
3	---	Track, see p.16			
4	AAA462HR3	Spacer, 26.9 mm L			
5	AAA462HR4	Spacer, 39.6 mm L			

**NOTE:** Complete the part number with a length (see example).

**Type AAA409HC**



<b>Track Length Calculation (mm)</b>	
EW = Entrance Width	
<b>Fast Track</b>	<b>Slow Track</b>
$L = (EW \times 1.5) + 38 \text{ mm}$	$L = EW + 76 \text{ mm}$

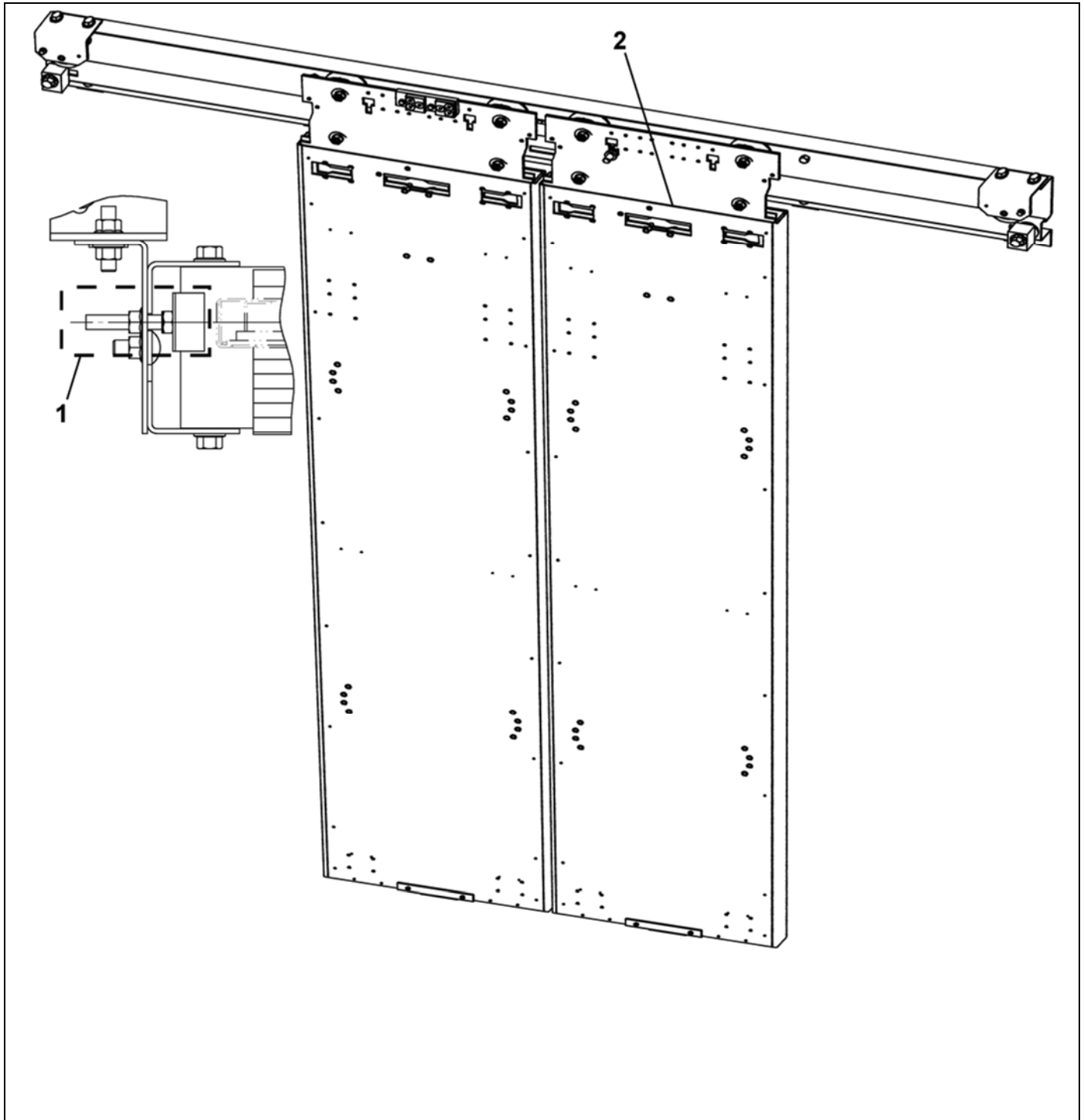
	AAA23100J AAA23100AAE					
REF. No.	PART No.	DESCRIPTION	DOOR HAND			
1	AAA483WR999-___	<b>SEE NOTE</b> Track, Fast				
	AAA483WR998-___	Track, Slow				
		<b>Manual</b> <table border="1" style="display: inline-table; vertical-align: middle;"><tr><td>ORDER</td></tr><tr><td> </td></tr><tr><td> </td></tr></table> <b>w/Cutouts (see NOTE)</b> Indicate the desired length to your OSC Customer Service Representative (use formula above and example below). Special order. Not in stock.	ORDER			
ORDER						

**NOTE:** Complete the part number with a length (see example).

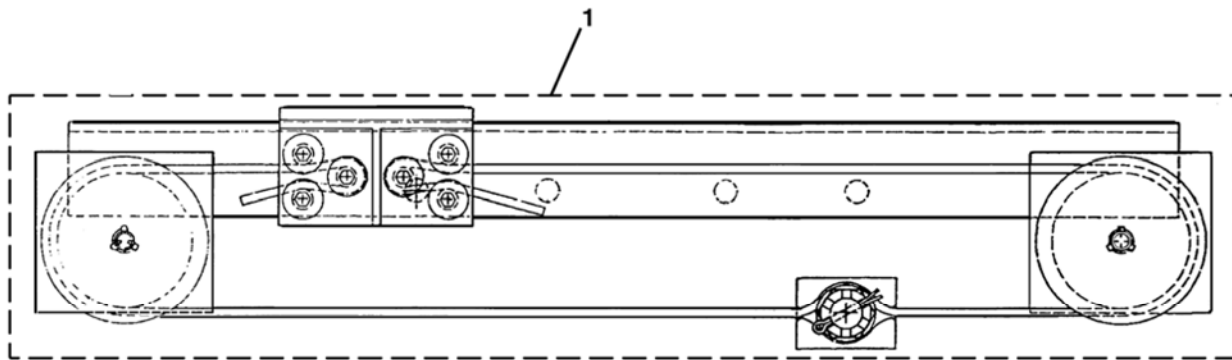


# Hoistway Doors

25-AAA23100AAB



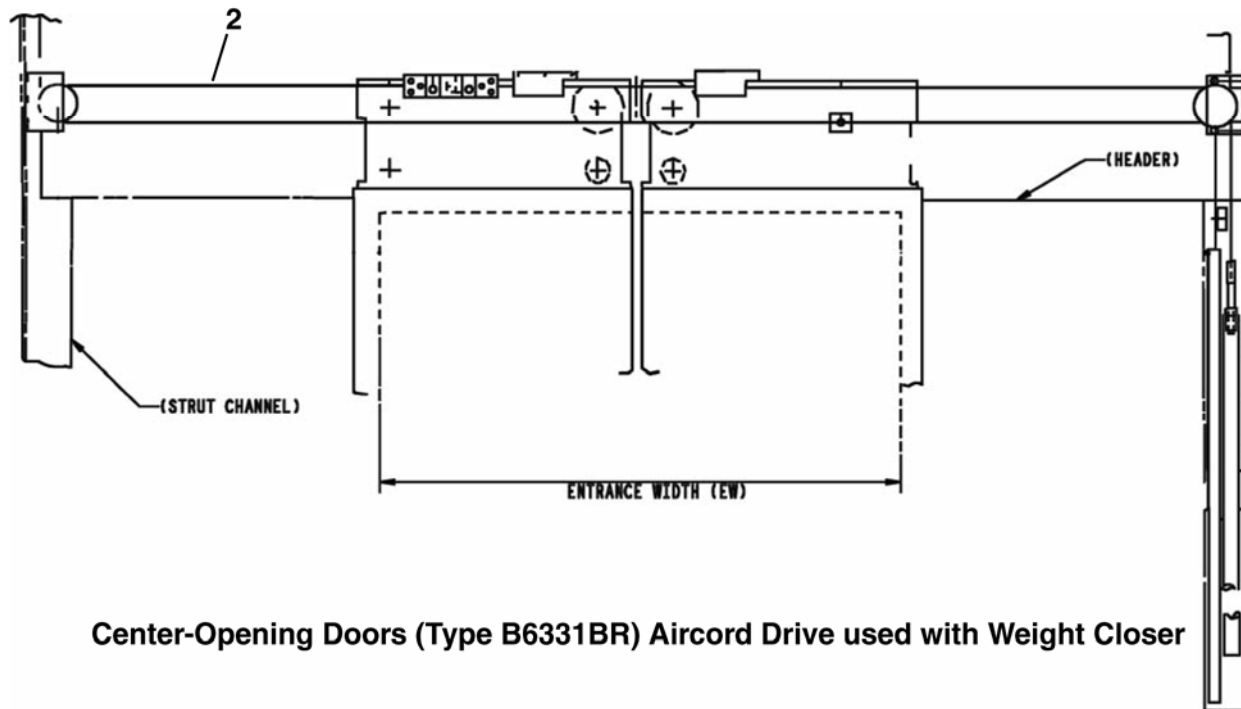
REF. NO.	PART No.	DESCRIPTION
1	A477FH3	Assembly, Stop
2	---	Door, Hoistway, see SPL 25-AAA23100Y (includes astragal and sight guard information)



**Two-Speed Doors (Type 6178AA) Aircord Drive for Two-Speed Doors**



**Center-Opening Doors (Type 6178R) Aircord Drive used with Spirator**

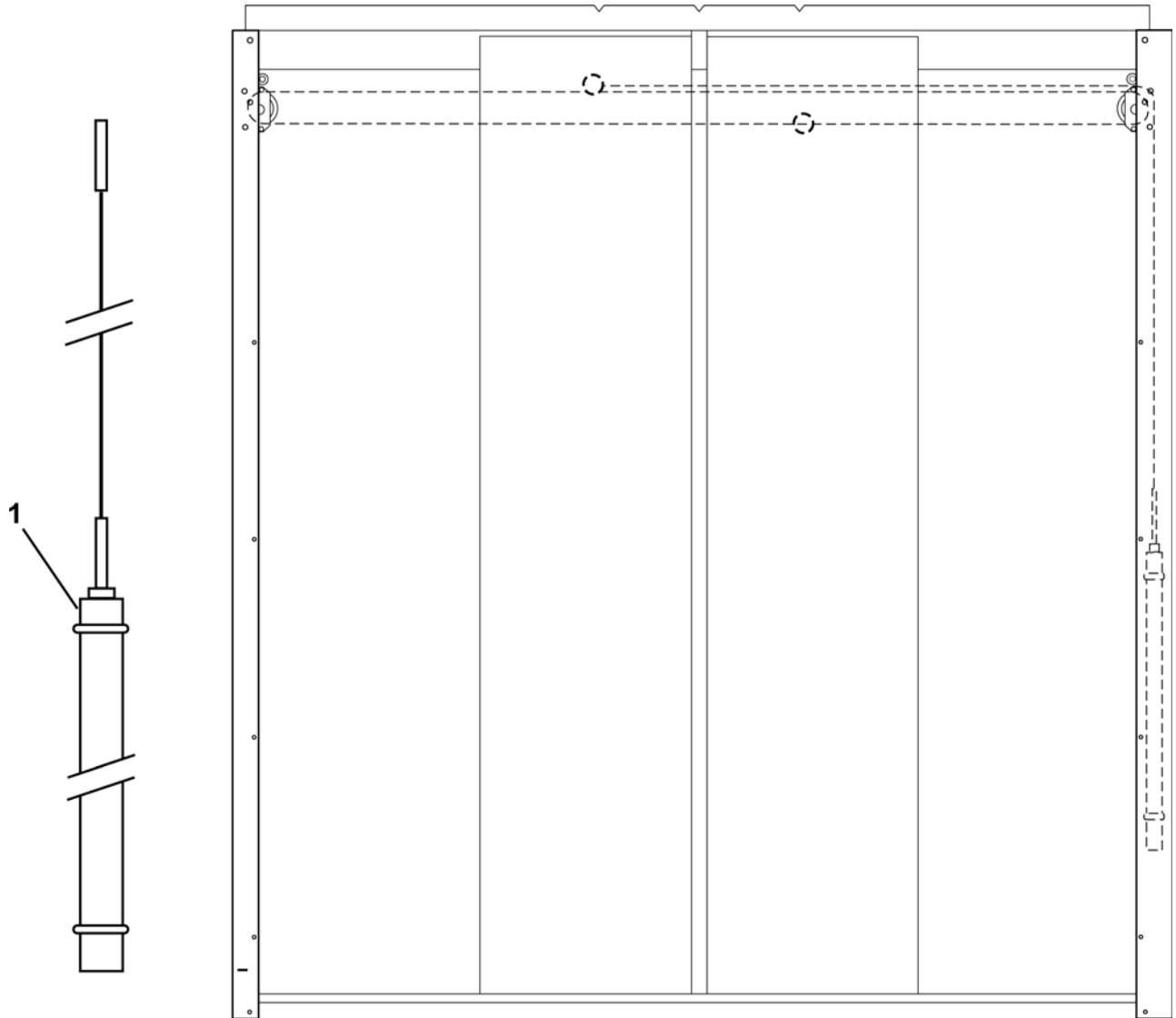


**Center-Opening Doors (Type B6331BR) Aircord Drive used with Weight Closer**

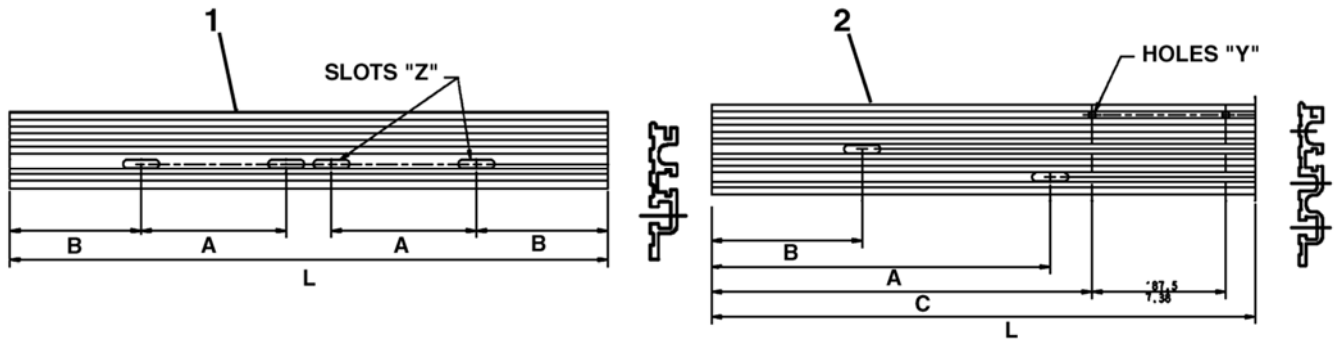
REF. NO.	PART No.	DESCRIPTION
1	---	Assembly, Aircord, Two-Speed Doors, see SPL 25-6178R
2	---	Assembly, Relating Cable, Center-Opening Doors, see SPL 25-6178R
	---	Assembly, Relating Cable, Center-Opening Doors, see SPL 26-B6331BR

# Weight Closer

25-AAA23100AAB



REF. NO.	PART No.	DESCRIPTION
1	---	Assembly, Weight Closer, see SPL 26-AAA23402L

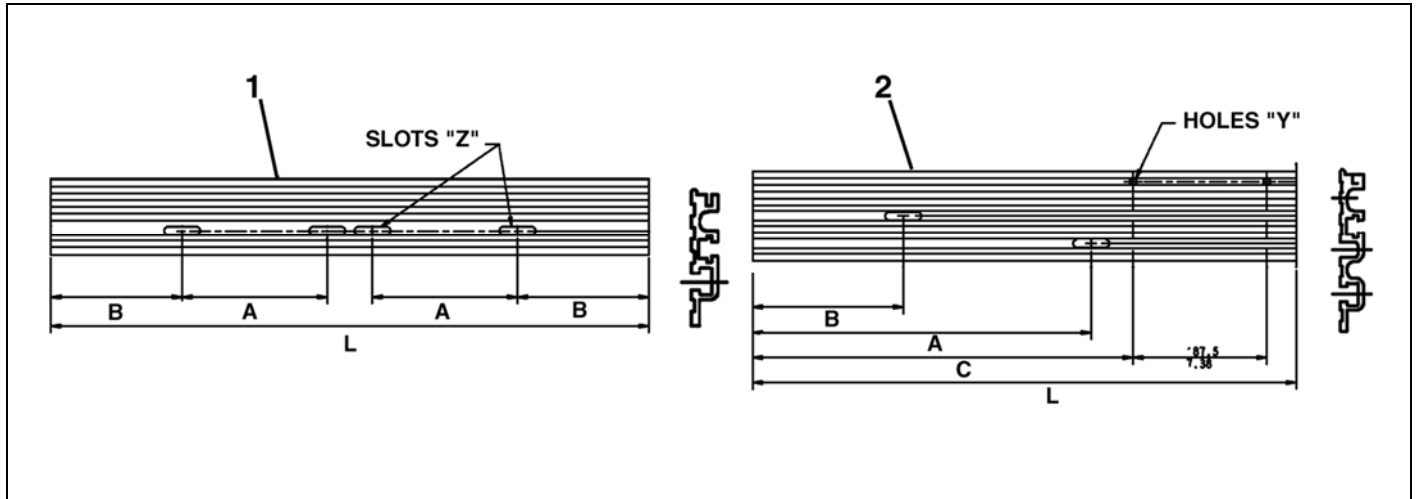


REF. No.	Part No. AAA426AS_+ Finish (see note)	Dimension in.				Holes "Y"	Slots "Z"	Door			
		L	A	B	C			Opening(in.)	Hand	Type	Spring Closer
1	1	64.0	8.0	15.0	---	---	W	32	---	S/S	---
	2	64.0	8.0	41	---	---	W/O	---	---	---	---
	3	72.0	8.0	17	---	---	W	36	---	S/S	---
	4	72.0	8.0	47.0	---	---	W/O	---	---	---	---
	5	84.0	8.0	200	---	---	W	42	---	S/S	---
	6	84.0	8.0	56.0	---	---	W/O	---	---	C/O	---
	7	72.0	19.9	26.1	---	---	W/O	36	---	C/O	---
	8	84.0	22.9	30.6	---	---	W/O	42	---	C/O	---
	9	96.0	25.9	35.1	---	---	W/O	48	---	C/O	---
2	10	63.0	35.2	13.8	---	W/O	---	42	👤	2/S	W/O
	11	63.0	27.8	49.2	---	W/O	---	42	👤	2/S	W/O
	12	63.0	35.2	13.8	50.44	W	---	42	👤	2/S	W
	13	63.0	27.8	49.2	5.19	W	---	42	👤	2/S	W
	14	72.0	39.7	15.3	---	W/O	---	48	👤	2/S	W
	15	72.0	32.3	56.7	---	W/O	---	48	👤	2/S	W/O
	16	72.0	39.7	15.3	54.31	W	---	48	👤	2/S	W/O
	17	72.0	32.3	56.7	10.31	W	---	48	👤	2/S	W
	18	81.0	44.2	16.8	---	W/O	---	54	👤	2/S	W
	19	81.0	36.8	64.2	---	W/O	---	54	👤	2/S	W/O
	20	81.0	44.2	16.8	58.73	W	---	54	👤	2/S	W/O
	21	81.0	36.8	64.2	14.89	W	---	54	👤	2/S	W

**NOTE:** Aluminum = 41, Brass = 7, and Nickel Silver = 45. Example: AAA426AS1-45

# Entrance Sills

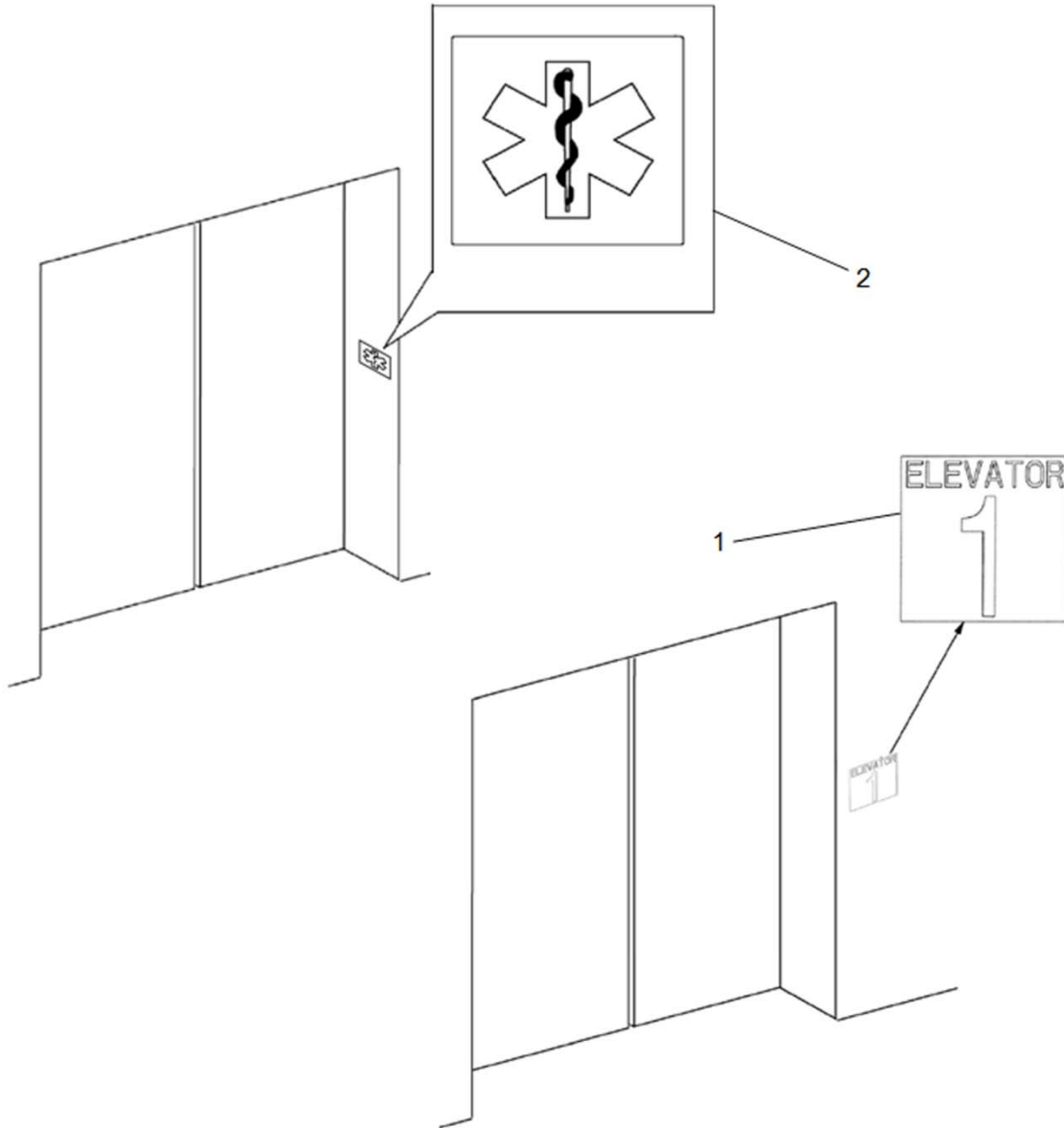
25-AAA23100AAB





REF. No.	Part No. AAA426AS_ Finish (see note)	Dimension in.				Holes "Y"	Slots "Z"	Door			
		L	A	B	C			Opening(mm)	Hand	Type	Spring Closer
1	22	1800	203	425	---	---	W	900	---	S/S	---
	23	2000	203	475	---	---	W	1000	---	S/S	---
	24	1800	498	651	---	---	W/O	900	---	C/O	---
	25	2000	548	726	---	---	W/O	1000	--	C/O	---
	26	2200	598	801	---	---	W/O	1100	--	C/O	---
	27	2400	648	876	---	---	---	1200	---	C/O	---
2	28	1650	919	359	---	W/O	---	1100	👉	2/S	W/O
	29	1650	731	1291	---	W/O	---	1100	👉	2/S	W/O
	30	1650	919	359	1297,5	W	---	1100	👉	2/S	W
	31	1650	731	1291	165,0	W	---	1100	👉	2/S	W
	32	1800	994	384	---	W/O	---	1200	👉	2/S	W/O
	33	1800	806	1416	---	W/O	---	1200	👉	2/S	W/O
	34	1800	994	384	1369,5	W	---	1200	👉	2/S	W
	35	1800	806	1416	243,0	W	---	1200	👉	2/S	W

**NOTE:** Aluminum = 41, Brass = 7, and Nickel Silver = 45. Example: AAA426AS1-45

REF. NO.	PART No.	DESCRIPTION
1	AAA50ANN-AL-104	Shape, Sill, w/o Cutouts, 104 in. L for Center-Opening & Single-Slide Doors
	AAA50ANN-41-84	Shape, Sill, w/o Cutouts, 84 in. L for Center-Opening & Single-Slide Doors
	AAA50ANN-NS-96	Shape, Sill, w/o Cutouts, 96in. L for Center-Opening & Single-Slide Doors
	AAA50ANN-7-120	Shape, Sill, w/o Cutouts, 120 in. L for Center-Opening & Single-Slide Doors
2	AAA50ANP-AL-120	Shape, Sill, w/o Cutouts, 120 in. L for Two-Speed Doors
	AAA50ANP-45-81	Shape, Sill, w/o Cutouts, 81 in. L for Two-Speed Doors
	AAA50ANP-7-81	Shape, Sill, w/o Cutouts, 81 in. L for Two-Speed Doors



REF. No.	VINTAGE PART No.	DESCRIPTION
1	---	Plate, Elevator Number, Type AAA102ASA,  SPL 32-AAA102ASA
2	---	Plate, "Star of Life," Type AAA102AMS,  SPL 32-AAA102AMS