

Hoistway Entrance

Flush and Non-Flush Mounted
Center-Opening and Single-Slide
Doors, for OVL-HP & HPLIM Door
Systems

Spare Parts Leaflet

25-AAA23100G

November 27, 2019 / Page 1 of 8

Flush Entrances Vintage

Center-Opening Doors,
HPLIM

25 A - AAA23100AAA

Single-Slide Door,
HPLIM and OVL

25 A - AAA23100AAD

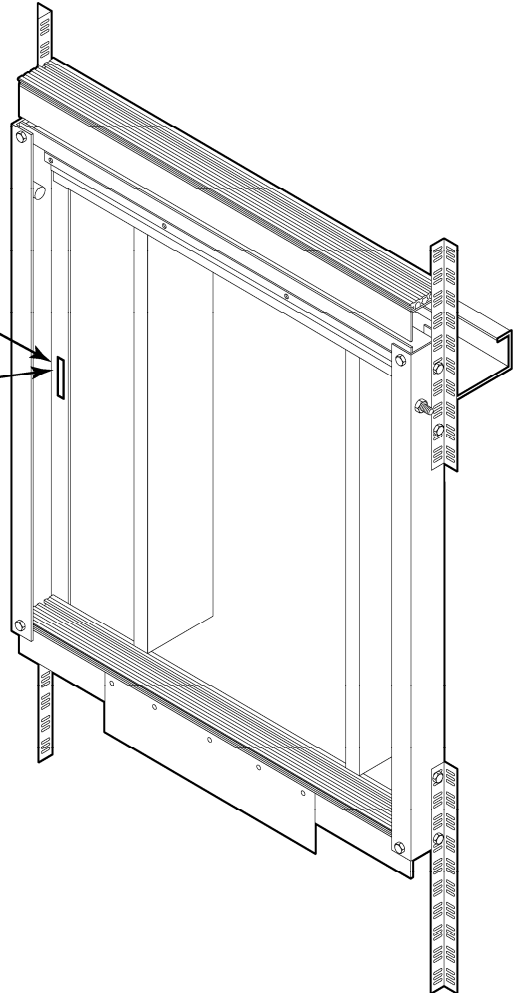
Non-Flush Entrances Vintage

AAA23100G, Center-Opening
Doors, OVL and HPLIM

W/O VINTAGE

AAA23100H, Single-Slide
Door, HPLIM

W/O VINTAGE



OTIS

This document does not contain any
technical data subject to EAR or ITAR

SERVICE ENGINEERING

Otis Elevator Company
Bloomfield, Connecticut USA

Unpublished Work—© Otis Elevator Co.; 2019

Leaflet Description

This leaflet describes the LRUs for flush and non-flush mounted center-opening and single-slide hoistway entrances with OVL-HP and HPLIM door systems. For the 2-speed doors OVL-HP hoistway entrance system, refer to SPL 25-AAA23100AAB. For the HPLIM door system (center-opening and single-slide), refer to SPL 25-AAA23101J.

Flush and non-flush pertains to hoistway sill construction types. Flush mounted sills are anchored with support brackets to vertical hoistway walls. Non-flush sill mounting has the sill supported by brackets fastened to a sill ledge (concrete or steel), which is then backfilled with concrete grout.

Leaflet Revisions

Date Revised	Subject Matter Expert	Reason for Revision
December 18, 2006	Diem Tran	New SPL
October 22, 2008	Brian Regan	Fixed the footers on pp. 3 and 7
November 27, 2019	Peter Kelley	Revised history page

Related Drawings

Drawing No.	Title	Drawing No.	Title
AAA23100G	Hoistway Entrance Non-Flush C/O, OVL/HPLIM	AAA23100H	Hoistway Entrance Non-Flush S/S, HPLIM
AAA23100AAA	Hoistway Entrance Flush C/O, OVL/HPLIM	AAA23100AAD	Hoistway Entrance Flush S/S, HPLIM

Related Documents

Document ID	Title
SPL 25-AAA23101J	HPLIM Hoistway Door System: C/O & S/S
SPL 25-AAA23100AAB	Hoistway Entrance
SPL 32-A102KE	Entrance Frame Braille Plates
SPL 32-AAA102AMS	Handicap Plate (ASME A17.1)

Subject Matter Expert

Name	Department
Peter Kelley	OSC Service Engineering

About Spare Parts Leaflets...

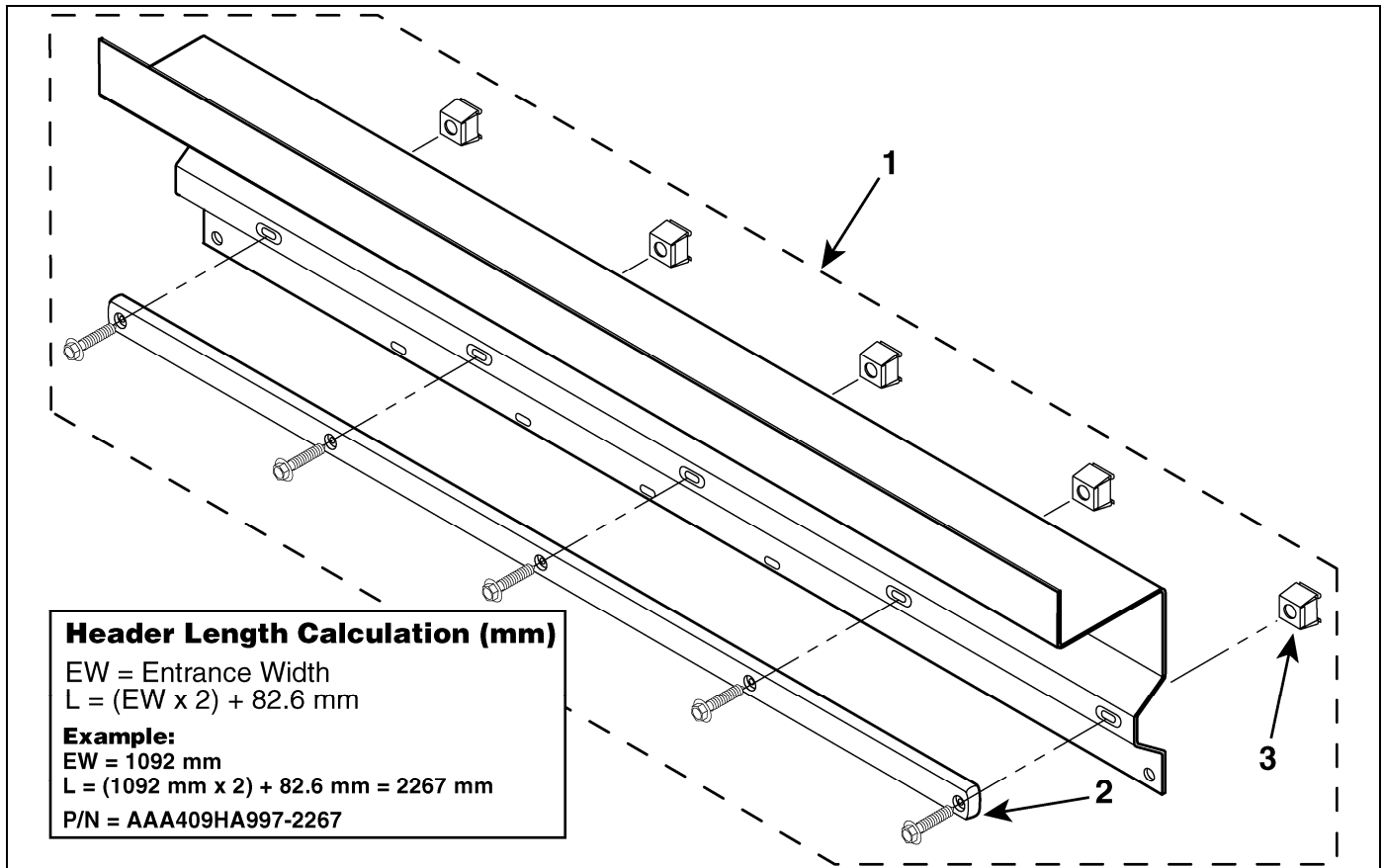
This document lists the lowest replaceable units (LRUs) for the standard version of the product. The LRUs are chosen by a team of Otis associates representing engineering and manufacturing.

While goal of this document is to make parts identification as easy as possible, the document cannot be all-inclusive. Elevator and escalator contracts classified as "special" or "custom" are not addressed here. For such contracts, please refer to specified information, the contract folder, TIPs, Field Education Articles, Construction Letters, etc. for further information.

If you have any suggestions about this document, please contact the subject matter expert listed on this page.

OVL-HP Header Assembly, Center Opening Doors

25-AAA23100G



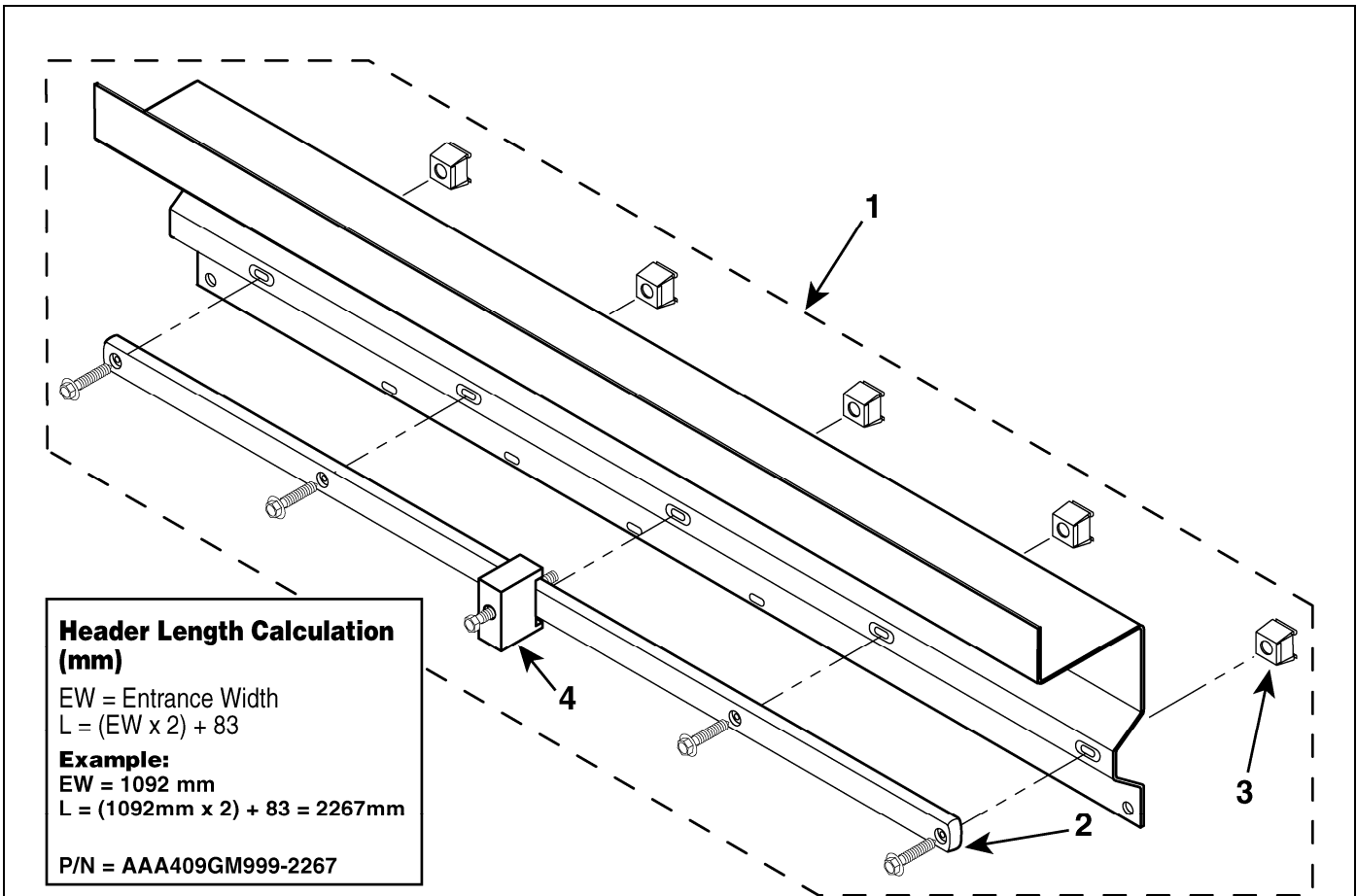
W/O VINTAGE				
REF. No.	PART No.	DESCRIPTION	ENTRANCE WIDTH	LENGTH
1 (see NOTE)	AAA409HA1 AAA409HA8	Assembly, Header & Applied Track	36 in.	154.6 in.
	AAA409HA2 AAA409HA9		42 in.	166.6 in.
	AAA409HA3 AAA409HA10		48 in.	178.6 in.
	AAA409HA999 AAA409HA997-____ see NOTE 2		Variable	Variable (see NOTE 2)
2	---	Track, See p. 7		
3	72DJ3	Nut, Grip		

NOTES:

1. P/Ns AAA409HA8 through 10 and 999 need to use six 1/4-20 x 1P/K ZP type F hex head screws in order to replace p/ns AAA409HA1 through 3 and 997.
2. Contract specific part. Determine the required length and part number using the above header length calculation and example and then communicate the information to your OSC Customer Service Representative.

25-AAA23100G

HPLIM Header Assembly Center Opening Doors



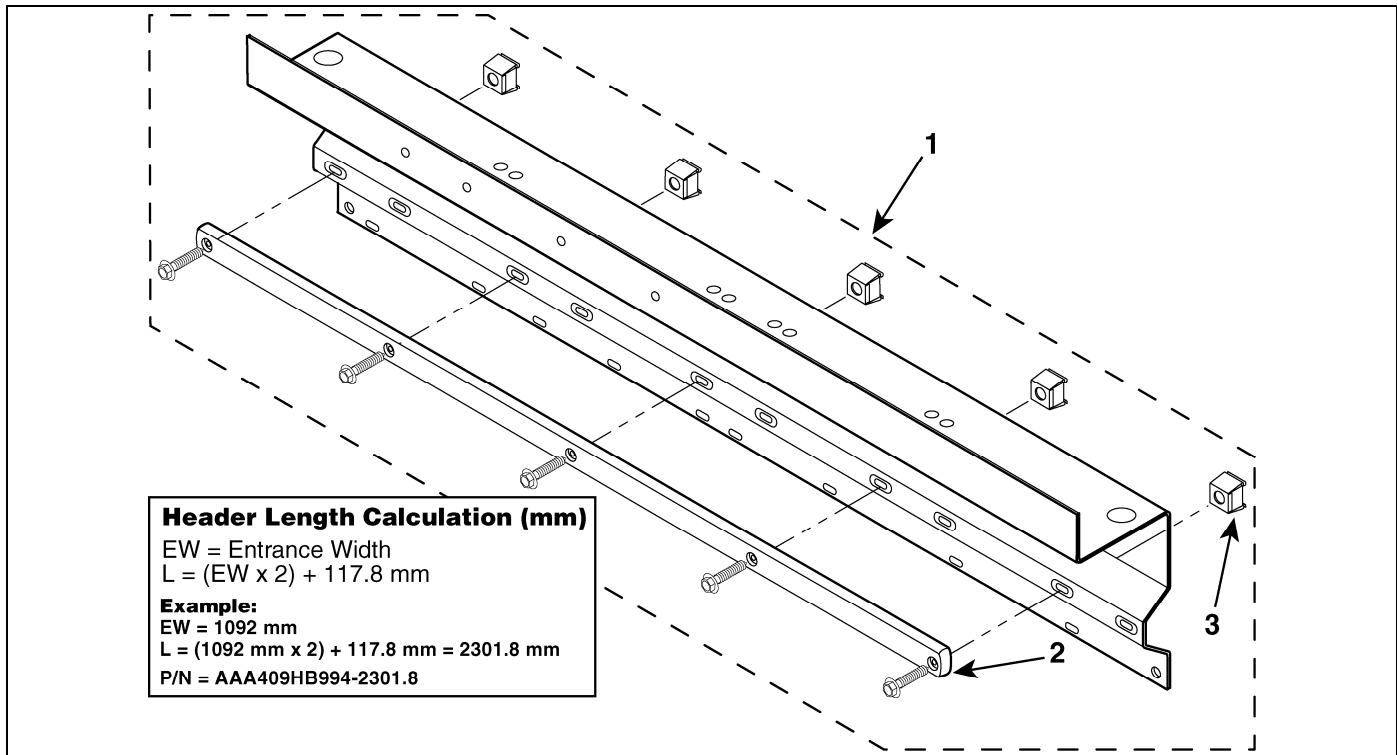
Header Length Calculation (mm)
 EW = Entrance Width
 $L = (EW \times 2) + 83$
Example:
 EW = 1092 mm
 $L = (1092\text{mm} \times 2) + 83 = 2267\text{mm}$
 P/N = AAA409GM999-2267

W/O VINTAGE				
REF. No.	PART No.	DESCRIPTION	ENTRANCE WIDTH	LENGTH
1	AAA409GM1	Assembly, Header & Applied Track	914 mm	1828 mm
	AAA409GM2		1067 mm	2134 mm
	AAA409GM3		1219 mm	2438 mm
	AAA409GM999-____ (see NOTE)		Variable	Variable (see NOTE)
2	---	Track, see p. 7		
3	72DJ15	Nut, Grip (M10 x 1)		
4	AAA477GH1	Stop		

NOTE: Contract specific part. Determine the required length and part number using the above header length calculation and example and then communicate the information to your OSC Customer Service Representative.

OVL-HP Header Assembly Single-Slide Doors

25-AAA23100G

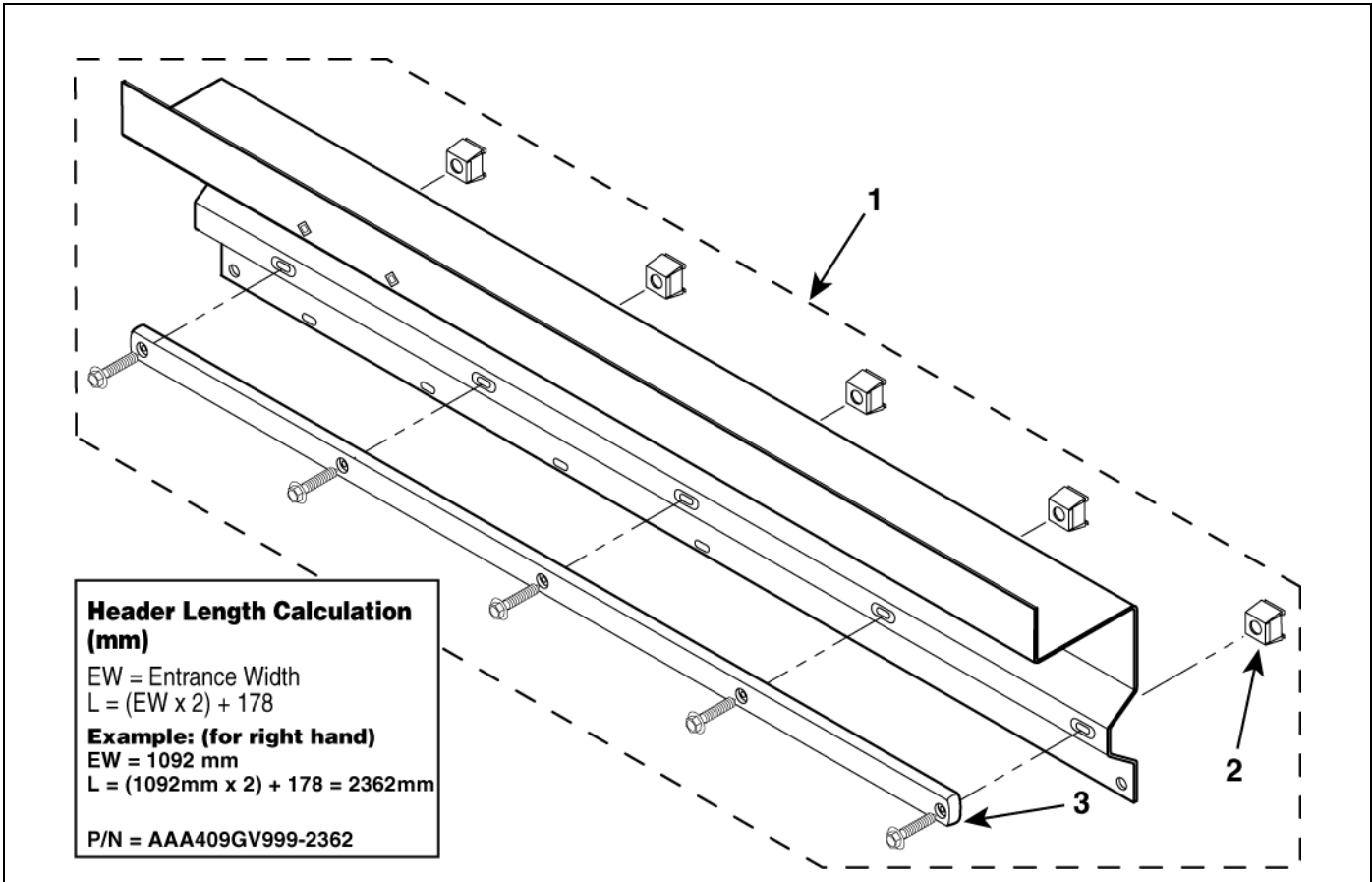


REF. No.	W/O VINTAGE PART No.	DESCRIPTION	HAND	ENTRANCE WIDTH
1 (see NOTE 1)	AAA409HB1 AAA409HB11	Assembly, Header & Applied Track		32 in.
	AAA409HB2 AAA409HB12			
	AAA409HB3 AAA409HB13			36 in.
	AAA409HB4 AAA409HB14			
	AAA409HB5 AAA409HB15			42 in.
	AAA409HB6 AAA409HB16			
	AAA409HB998 AAA409HB994-___			Variable (see NOTE 2)
	AAA409HB999 AAA409HB995-___			
2	---	Track (see p. 7)		
3	72DJ3	Nut, Grip		

NOTES:

1. P/Ns AAA409HB11 through 16, and 998, 999 need to use six 1/4-20 x 1P/K ZP type F hex head screws in order to replace p/ns AAA409HB1 through 6 and 994, 995.
2. Contract specific part. Determine the required length and part number using the above header length calculation and example and then communicate the information to your OSC Customer Service Representative.

HPLIM Header Assembly Single Slide Doors

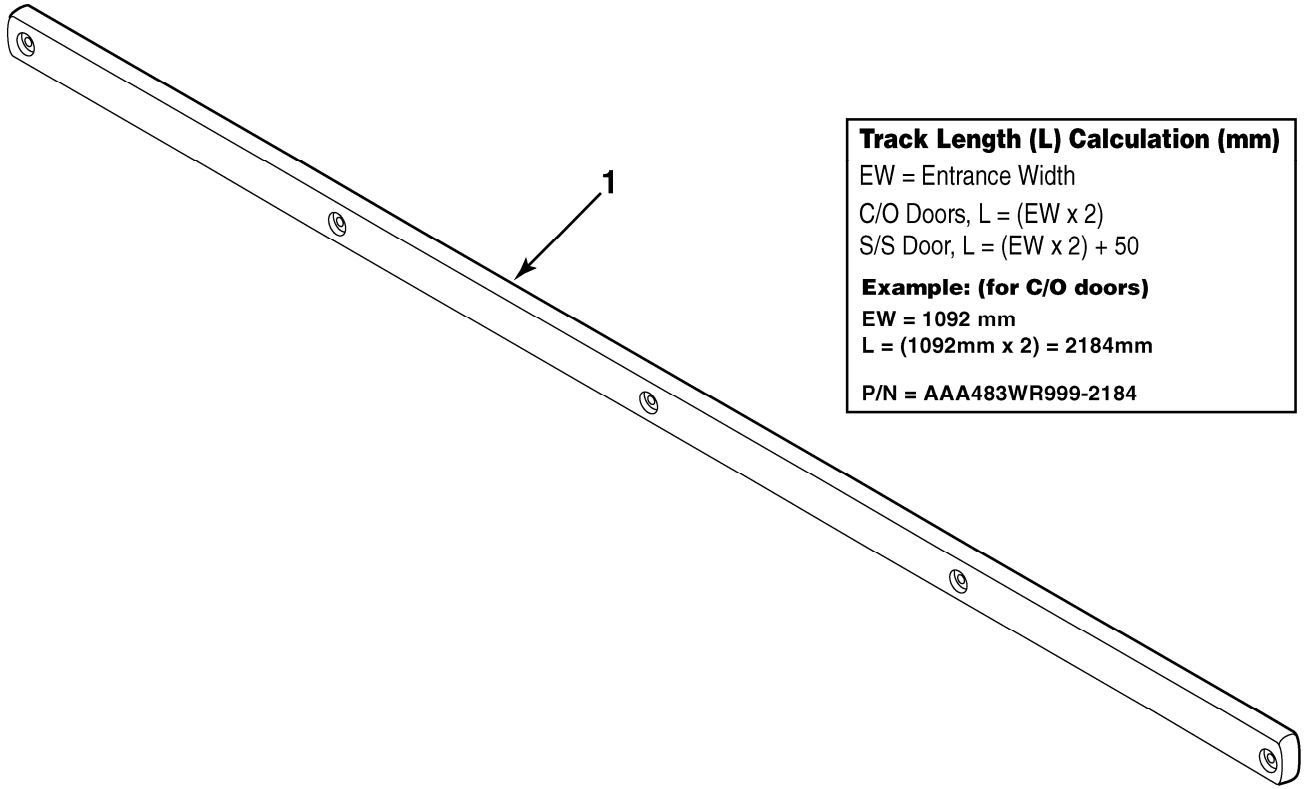


REF. No.	W/O VINTAGE PART No.	DESCRIPTION	HAND	ENTRANCE WIDTH
1	AAA409GV1	Assembly, Header & Applied Track		813 mm
	AAA409GV4			
	AAA409GV2			914 mm
	AAA409GV5			
	AAA409GV3			1067 mm
	AAA409GV6			
	AAA409GV999-__			Variable (see NOTE)
	AAA409GV998-__			
2	72DJ15	Nut, Grip (M10 x 1)		
3	---	Track, see p. 7		

NOTE: Contract specific part. Determine the required length and part number using the above header length calculation and example and then communicate the information to your OSC Customer Service Representative.

OVL-HP/HPLIM Applied Track

25-AAA23100G

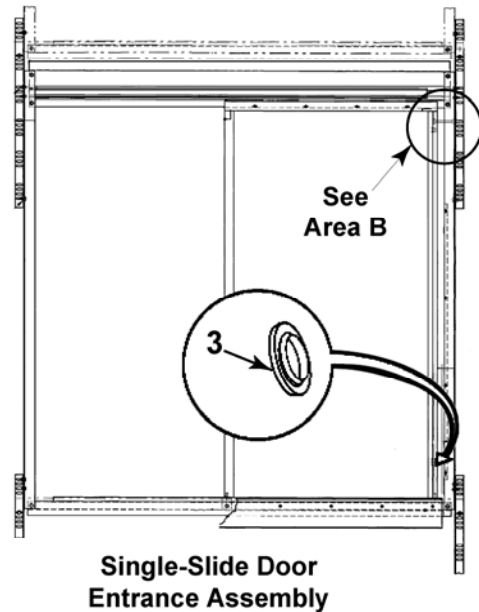
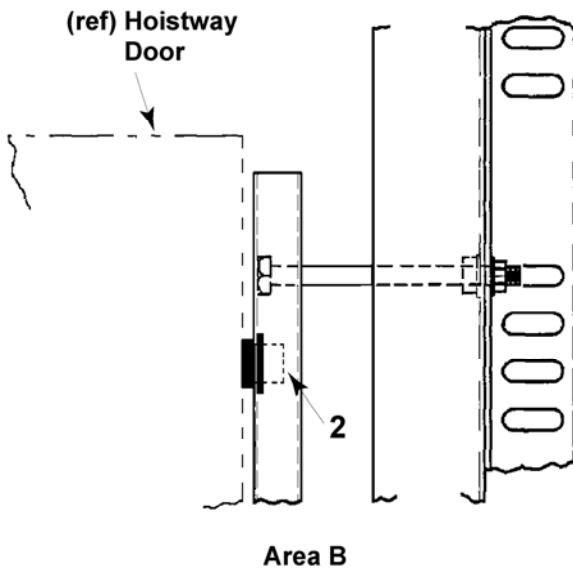
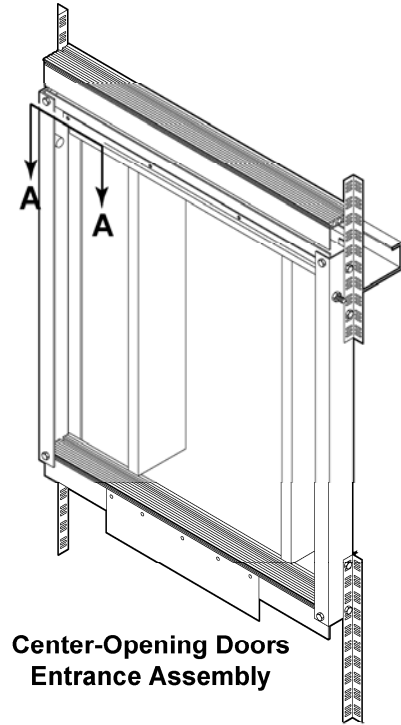
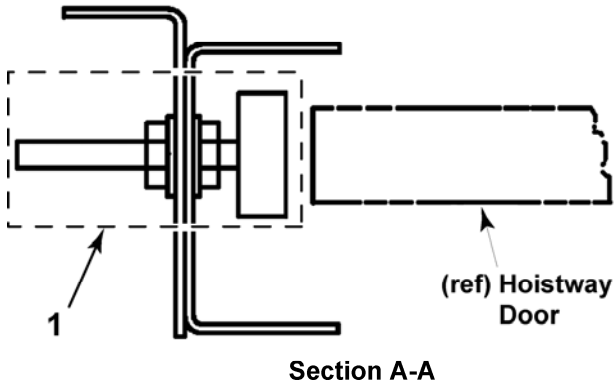


Track Length (L) Calculation (mm)
 EW = Entrance Width
 C/O Doors, L = (EW x 2)
 S/S Door, L = (EW x 2) + 50
Example: (for C/O doors)
 EW = 1092 mm
 L = (1092mm x 2) = 2184mm
 P/N = AAA483WR999-2184

W/O VINTAGE				
REF. No.	PART No.	DESCRIPTION	ENTRANCE WIDTH	LENGTH
1	AAA483WR1	Track, C/O	914 mm.	1828 mm
	AAA483WR5	Track, S/S		1878 mm
	AAA483WR2	Track, C/O	1067 mm.	2134 mm
	AAA483WR6	Track, S/S		2184 mm
	AAA483WR3	Track, C/O	1219 mm.	2438 mm
	AAA483WR4	Track, S/S	813 mm.	1676 mm
	AAA483WR999-____ (see NOTE)	Track, C/O & S/S	Variable	Variable (see NOTE)

NOTE: Contract specific part. Determine the required length and part number using the above header length calculation and example and then communicate the information to your OSC Customer Service Representative.

Stop and Bumper, OVL-HP & HPLIM



W/O VINTAGE			
REF. No.	PART No.	DESCRIPTION	APPLICATION
1	A477FH3	Assembly, Stop	Flush & Non-Flush, C/O & S/S
2	320CV2	Bumper, Top	Flush & Non-Flush, S/S
3	444BL1	Bumper, Bottom	Flush & Non-Flush, S/S