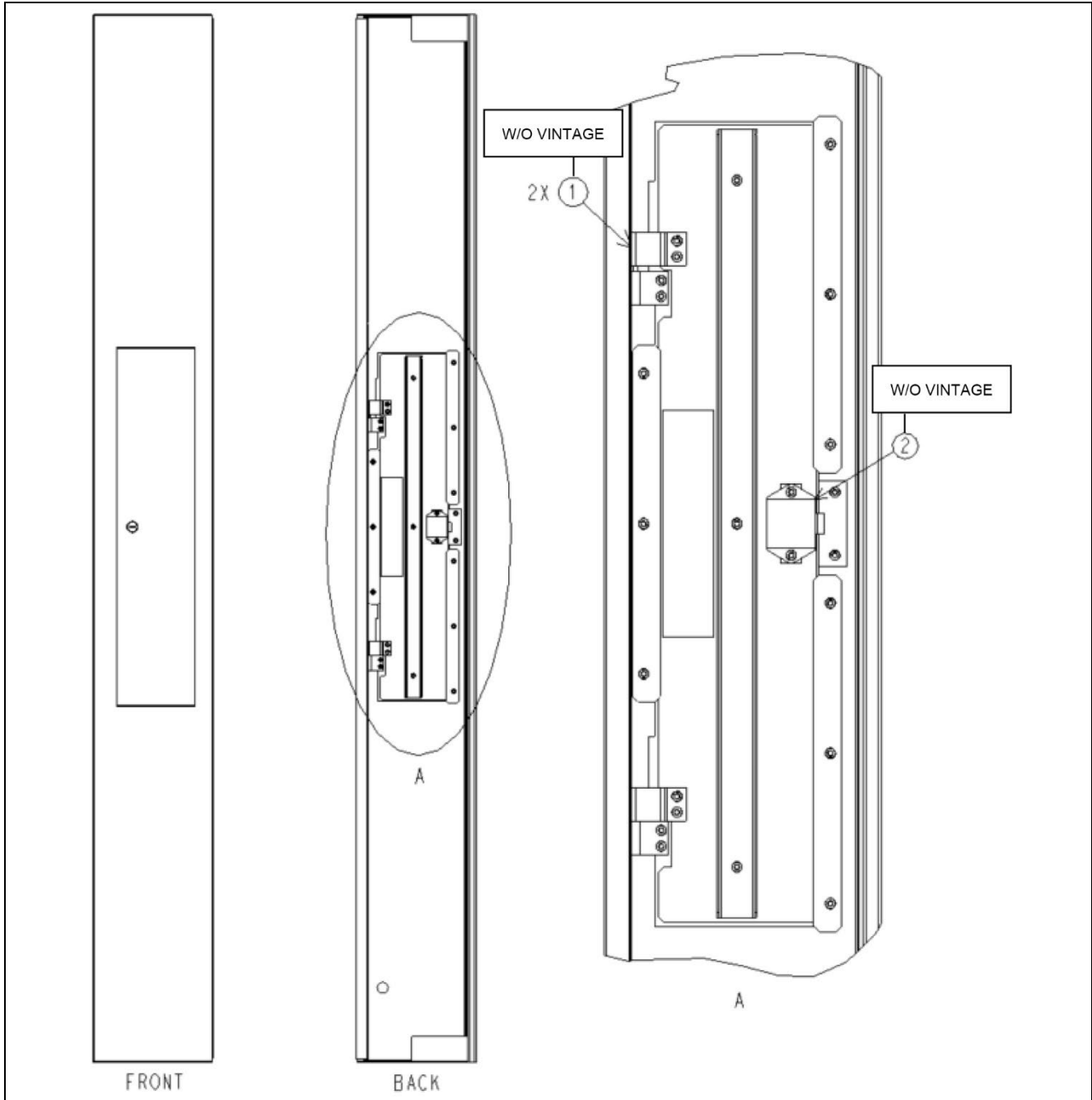


Entrance Slide Jamb

Spare Parts Leaflet

25-AAA407GG

July 10, 2024 / Page 1 of 3



This document does not contain any technical data subject to EAR or ITAR

SERVICE ENGINEERING
Otis Elevator Company
Bloomfield, Connecticut USA

Unpublished Work—© Otis Elevator Co.; 2024

History

25-AAA407GG

Leaflet Description

This leaflet provides information of replaceable components for entrance jamb with inspection and test (I&T) cover for machine room less (MRL) controller.

This leaflet is applicable for Gen3 Core and Gen3 Edge products.

Leaflet Revisions

Date Revised	Subject Matter Expert	Reason for Revision
July 10, 2024	Justas Gailius	New SPL

Related Drawings

Drawing No.	Title	Drawing No.	Title
AAA391EF	Hinge	AAA431AQ	Lock
AAA407GG	Entrance Jamb	AAA346BJQ	I&T Cover

Related Documents

Document ID	Title

Subject Matter Expert

Name	Department
Justas Gailius	Florence Engineering
Jordan Thomas	OSC Service Engineering

About Spare Parts Leaflets...

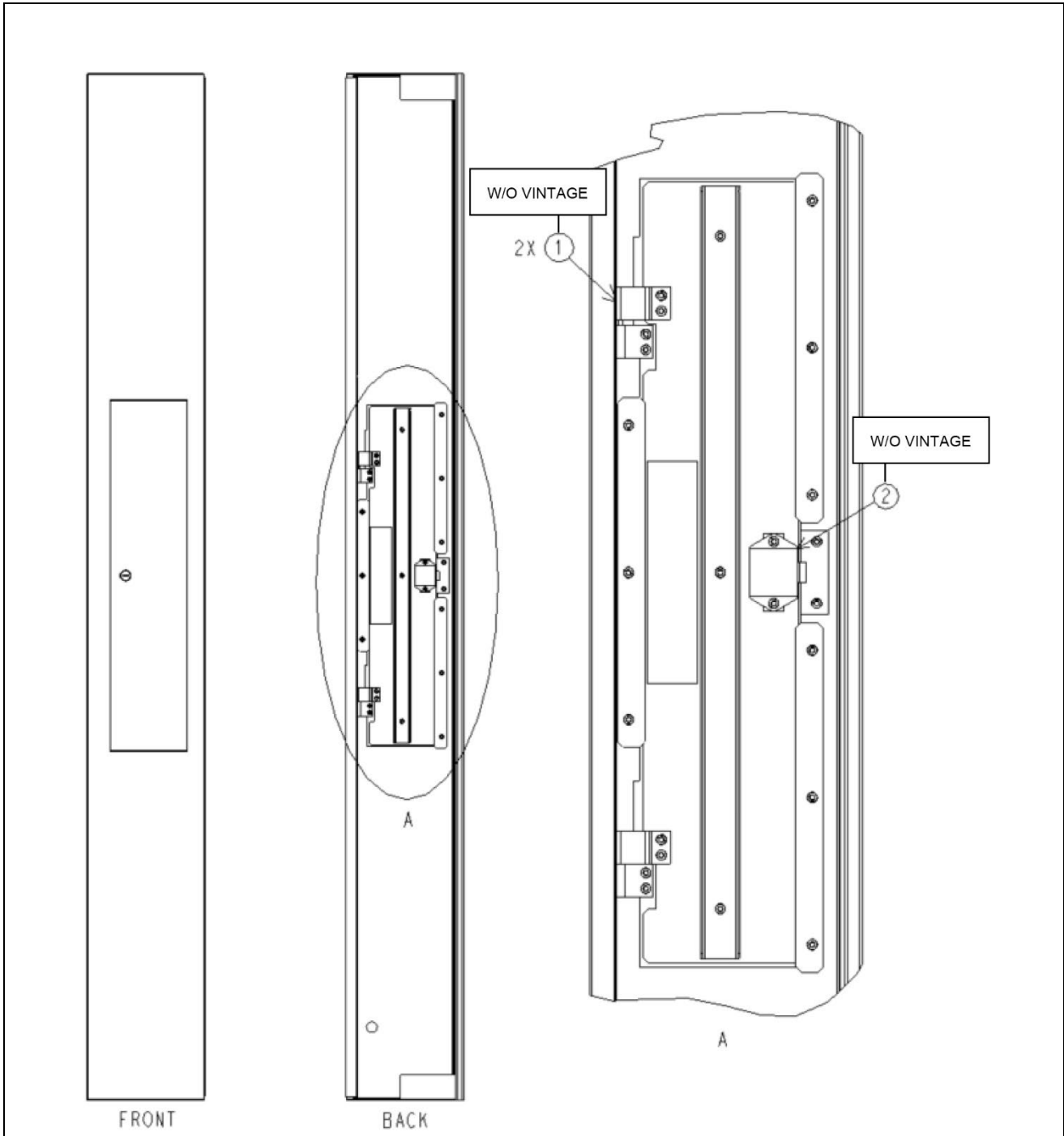
This document lists the lowest replaceable units (LRUs) for the standard version of the product. The LRUs are chosen by a team of Otis associates representing engineering and manufacturing.

While goal of this document is to make parts identification as easy as possible, the document cannot be all-inclusive. Elevator and escalator contracts classified as “special” or “custom” are not addressed here. For such contracts, please refer to specified information, the contract folder, TIPs, Field Education Articles, Construction Letters, etc. for further information.

If you have suggestions about this document, please contact the subject matter expert listed on this page.

Entrance Slide Jamb

25-AAA407GG



W/O VINTAGE		
REF. No.	PART No.	DESCRIPTION
1	AAA391EF6	Hinge, Right Hand
	AAA391EF7	Hinge, Left Hand
2	AAA431AQ19	Lock