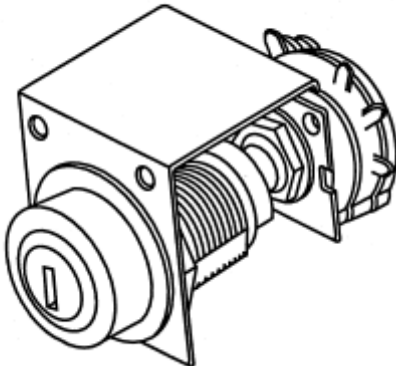
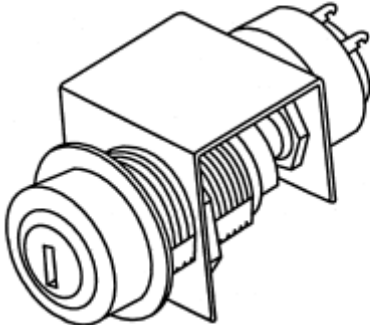
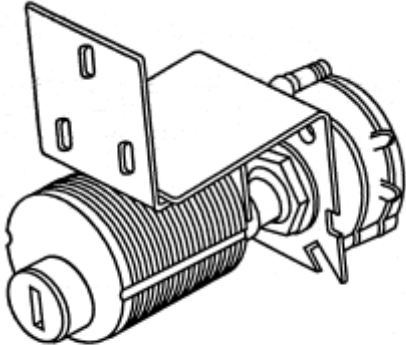


SPL 31-6410W - Advanced Fixture - Part 6410W Keyswitch Assembly

Unpublished Work - © Otis Elevator Company. Any unauthorized reproduction, disclosure, or distribution of copies or content by any person of any portion of this work may be a violation of Copyright Law of the United States of America. All rights reserved.

Separated from SPL 31-7069AH Dated: June 1995
November 1997

Page 1



SPL 31-6410W - Advanced Fixture - Part 6410W Keyswitch Assembly

Page 2 - TYPE 6410W KEYSWITCH ASSEMBLY

REVISED DATE	RESPONSIBLE ENGINEER	PRIMARY REASON FOR REVISION
01/17/97	John Kulikowski 0	Type 6410W Keyswitch Assemblies separated from SPL 31-7069AH Keyswitch Modules.

Leaflet Description

Type 6410W Keyswitch Assemblies

RELATED LEAFLETS	DRAWING REFERENCES	RELATED DOCUMENTS
SPL 31-7069AH Keyswitch Modules	6410W	TIP 4.0-19

This Spare Parts Leaflet (SPL) is prepared to assist you in determining the Lowest Replaceable Units (LRU) supported by the Otis Service Center for the standard version of the product titled on the preceding page. The parts are chosen by Otis associates from: Engineering, Field Engineering, Service Engineering, and Manufacturing. We attempt to make part identification as easy as possible. The SPL, however, cannot be all inclusive. Elevator and escalator contracts classified as either "special" or "custom" are not addressed. Alternative sources of information such as: the Contract Folder, Technical Information Publications, Field Education Articles, Construction Letters, etc. may give the information you are after. You live in the real world of maintaining your elevator and escalator contracts. On a daily basis, situations arise regarding parts identification and at times, for some reason, the part you need is not in the SPL. If you think a standard part not listed should be — let us know. We will respond.

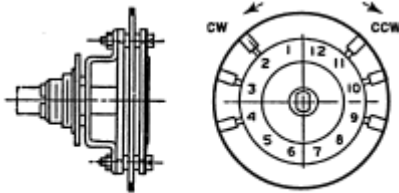
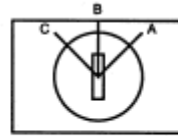
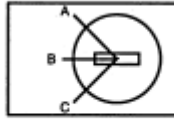
Val Minnes - Service Engineering

SPL 31-6410W - Advanced Fixture - Part 6410W Keyswitch Assembly

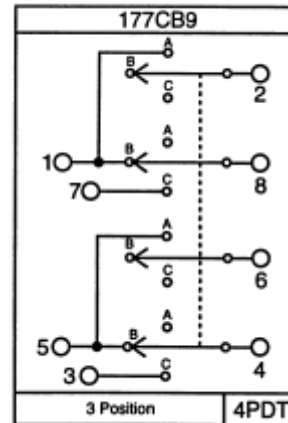
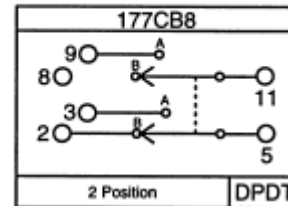
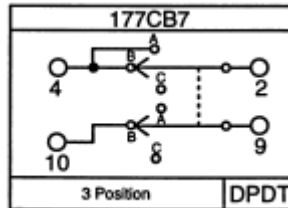
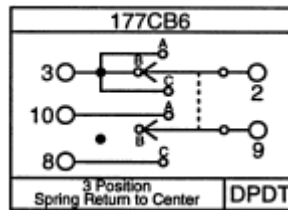
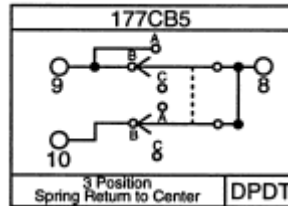
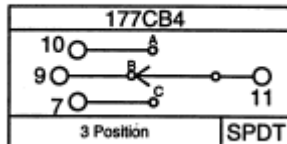
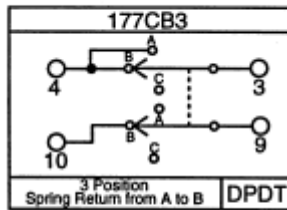
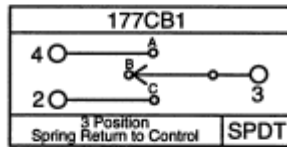
Page 3

SWITCH POSITIONS

- A = CLOCKWISE (CW)
- B = CENTER
- C = COUNTERCLOCKWISE (CCW)



Electrical Rating 3/4 Amp at 125VAC

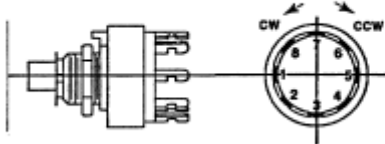
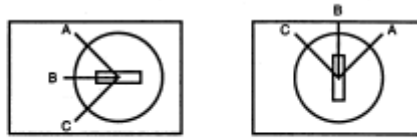


SPL 31-6410W - Advanced Fixture - Part 6410W Keyswitch Assembly

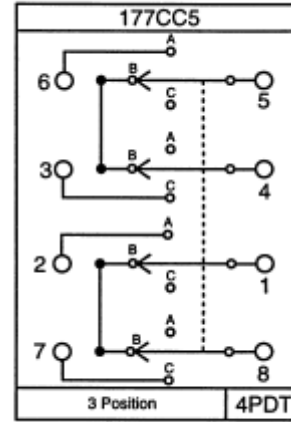
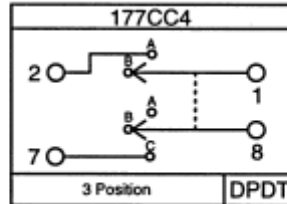
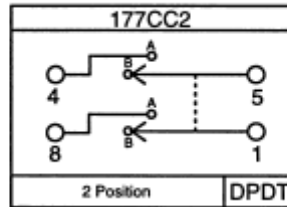
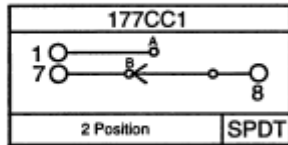
Page 4

SWITCH POSITIONS

A = CLOCKWISE (CW)
 B = CENTER
 C = COUNTERCLOCKWISE (CCW)

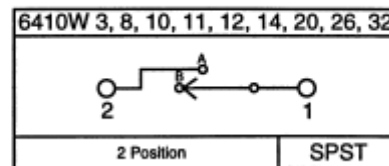
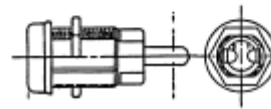
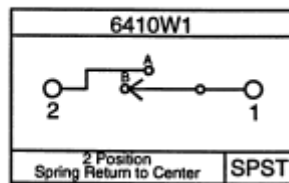
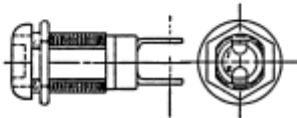


Electrical Rating
 12 Amps at 125VAC



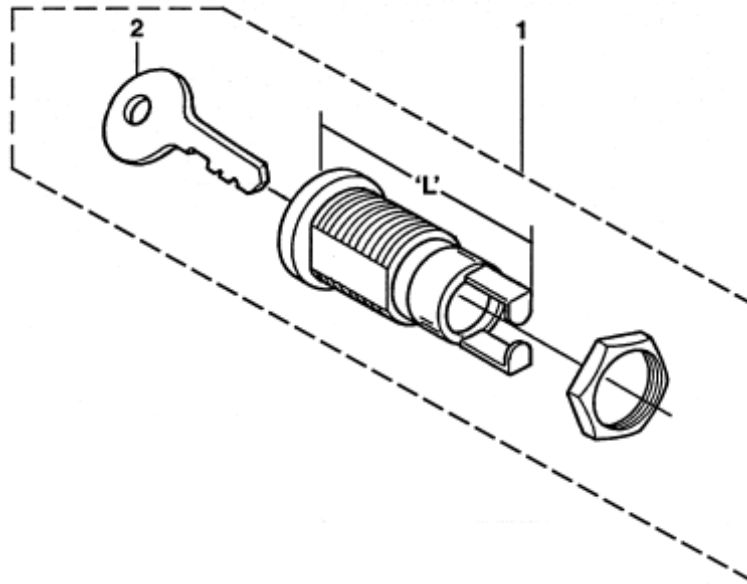
Integral Switches

Electrical Rating
 5 Amps at 115VAC



SPL 31-6410W - Advanced Fixture - Part 6410W Keyswitch Assembly

Page 5



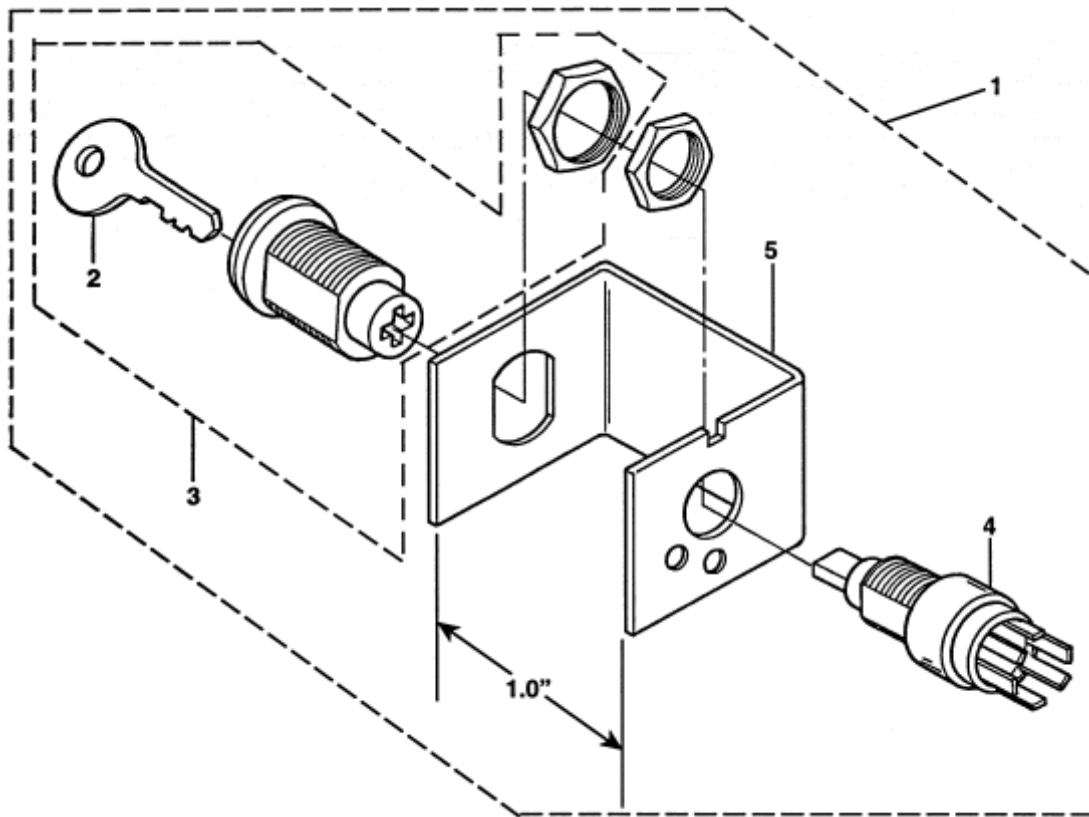
W/OUT VINTAGE

REF. 1		REF. 2		LOCK	SWITCH		DIMENSION
KEYSWITCH ASSEMBLY		KEY			KEY PULL	TYPE	
PART #	INITIAL APPLICATION	MARK	PART #				
6410W1	Express Priority Service	UTD	6410W-UTD	Center	SPST	Spring Return	2.27
6410W3	Power	UTA	6410W-UTA	Center CW	SPST		1.93
6410W8	Hospital Service	UTD	6410W-UTD	Center CW	SPST		1.93
6410W10	Attendant	UTC	6410W-UTC	Center CW	SPST		1.93
6410W11	SES Phase II ANSI	UTF	6410W-UTF	Center CW	SPST		1.93
*6410W12	Independent Svc.	UTA	6410W-UTA	Center CW	SPST		1.93
*6410W14	Inspection Initiation	UTA	6410W-UTA	Center CW	SPST		1.93
6410W20	Group Security	UTG	6410W-UTG	Center CW	SPST		1.93
6410W26	Attendant (MRS) Lite-Ray	UTC	6410W-UTC	Center CW	SPST		1.93
6410W32	Inspection Initiation (B44)	UTE	6410W-UTE	Center CW	SPST		1.93

* 6410W3 can be substitute

SPL 31-6410W - Advanced Fixture - Part 6410W Keyswitch Assembly

Page 6



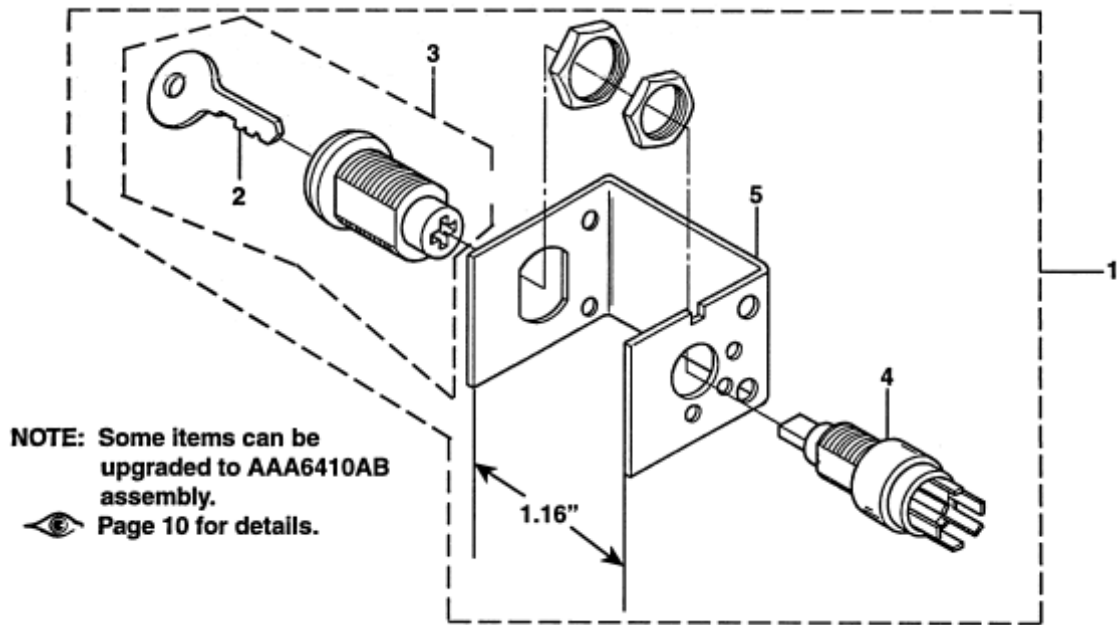
W/OUT VINTAGE

REF. 1		REF. 2		REF. 3		REF. 4		REF. 5
KEYSWITCH ASSEMBLY		KEY		LOCK		SWITCH		BRACKET
PART #	INITIAL APPLICATION	MARK	PART #	KEY PULL	PART #	TYPE	PART #	PART #
6410W4	Light	UTA	6410W-UTA	Center CW	AAA431AF14	SPST	177CC1	316DMH1
6410W13	Fan	UTA	6410W-UTA	Center CW, CCW	AAA431AF15	SPDT	177CC4	316DMH1
6410W15	Light Ray Cutout	UTA	6410W-UTA	Center CW	AAA431AF14	DPST	177CC2	316DMH1

These keyswitches are on the underside of Type 7155 Car Operating Panels.

SPL 31-6410W - Advanced Fixture - Part 6410W Keyswitch Assembly

Page 7



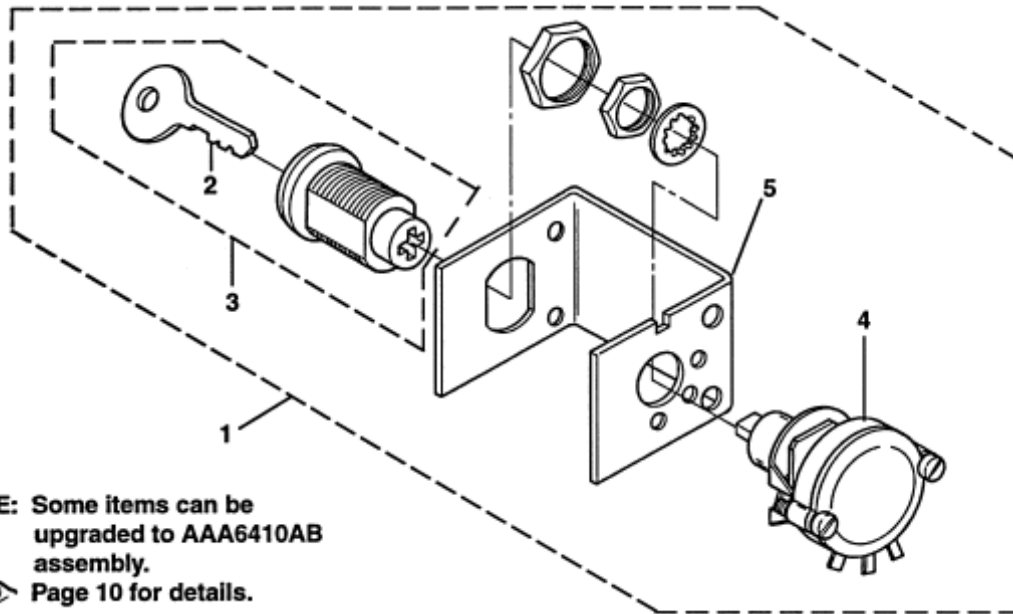
W/OUT VINTAGE

REF. 1		REF. 2		REF. 3		REF. 4		REF. 5
KEYSWITCH ASSEMBLY		KEY		LOCK		SWITCH		BRACKET
PART #	INITIAL APPLICATION	MARK	PART #	KEY PULL	PART #	TYPE	PART #	PART #
6410W21	Independent Svc. (ETO)	UTF	6410W-UTF	Center CCW	AAA431AF17	SPDT	177CC4	316DMB1
*6410W22	Light or Fan (ETO)	UTA	6410W-UTA	Center CW	AAA431AF14	SPST	177CC1	316DMB1
6410W23	Light, Fan, Ind. Svc., Inspection Initiation	UTA	6410W-UTA	Center CW	AAA431AF14	SPST	177CC1	316DMB1
6410W24	Hospital Service	UTD	6410W-UTD	Center CW	AAA431AF13	SPST	177CC1	316DMB1
6410W25	SES Phase II ANSI MRS, LRV	UTF	6410W-UTF	Center	AAA431AF16	SPST	177CC1	316DMB2
6410W27	Fan - 2 Speed	UTA	6410W-UTA	Center CW, CCW	AAA431AF15	SPDT	177CC4	316DMB1
6410W28	Emergency Power	UTA	6410W-UTA	Center CW, CCW	AAA431AF15	DPST	177CC5	316DMB1
6410W31	In-Car Stop	UTA	6410W-UTA	Center CW	AAA431AF14	DPST	177CC2	316DMB1
6410W33	Inspection Initiation (B44)	UTE	6410W-UTE	Center CW	AAA431AF18	SPST	177CC1	316DMB1

* 6410W23 can be substitute

SPL 31-6410W - Advanced Fixture - Part 6410W Keyswitch Assembly

Page 8

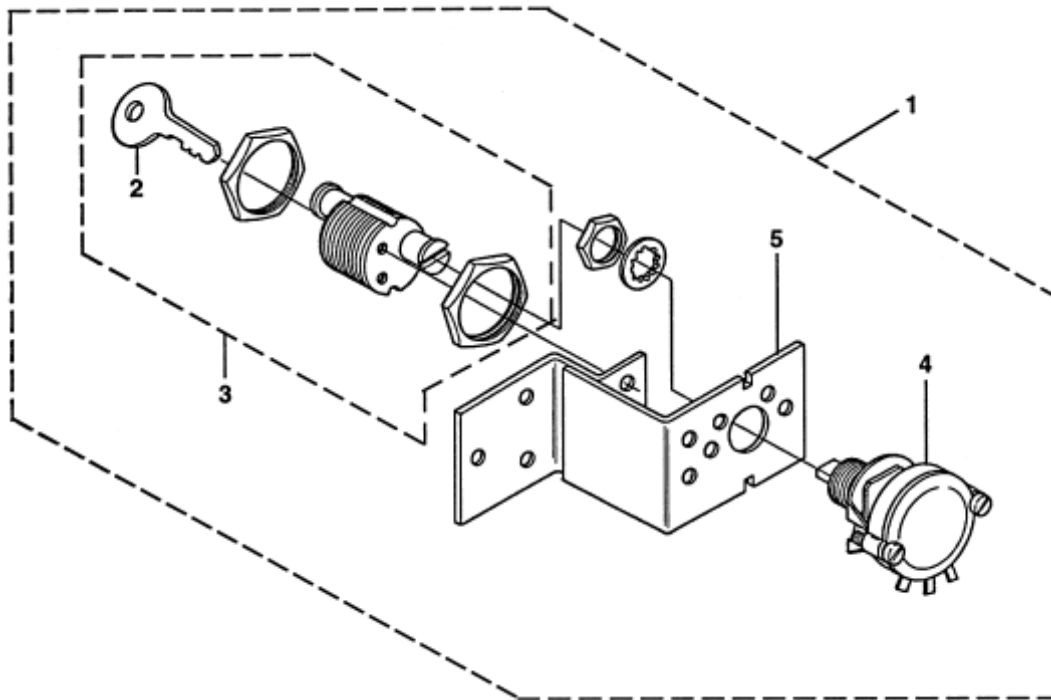


W/OUT VINTAGE

REF. 1		REF. 2		REF. 3		REF. 4		REF. 5
KEYSWITCH ASSEMBLY		KEY		LOCK		SWITCH		BRACKET
PART #	INITIAL APPLICATION	MARK	PART #	KEY PULL	PART #	TYPE	PART #	PART #
6410W2	Emergency Power	UTA	6410W-UTA	Center CW, CCW	AAA431AF1	SPDT	177CB4	316DMB1
6410W5	Park C - T - L	UTA	6410W-UTA	Center	AAA431AF4	SPDT Spr. Ret.	177CB5	316DMB2
6410W6	Access	UTE	6410W-UTE	Center	AAA431AF6	DPDT Spr. Ret.	177CB6	316DMB2
6410W7	SES Phase I ANSI	UTF	6410W-UTF	Center CW	AAA431AF9	DPDT	177CB7	316DMB1
6410W9	Security (Car)	UTB	6410W-UTB	Center	AAA431AF5	SPDT Spr. Ret.	177CB1	316DMB2
6410W29	Emergency Power	UTF	6410W-UTF	Center CW, CCW	AAA431AF3	SPDT	177CB4	316DMB1
6410W30	Emergency Power (B44) SES Phase II ANSI	UTF	6410W-UTF	Center CW, CCW	AAA431AF12	DPDT	177CB9	316DMB1
6410W36	SES Phase I - Ct.	BFD1	VP-797140	Center CW	AAA00431AAF001	DPDT	177CB7	316DMB3
6410W37	SES Phase II - Ct.	BFD1	VP-797140	Center CW, CCW	AAA00431AAF001	DPDT	177CB9	316DMB3

SPL 31-6410W - Advanced Fixture - Part 6410W Keyswitch Assembly

Page 9



W/OUT VINTAGE

REF. 1		REF. 2		REF. 3		REF. 4		REF. 5
KEYSWITCH ASSEMBLY		KEY		LOCK		SWITCH		BRACKET
PART #	INITIAL APPLICATION	MARK	PART #	KEY PULL	PART #	TYPE	PART #	PART #
6410W16	SES Phase I - N.Y.C.	2642	VP-797120	Center CCW	A431C32	DPDT Spr. Ret.	177CB3	A316DMC1
6410W17	SES Phase I - Chicago	5957(SA)	VP-797110	Center	A431C31	DPST	177CB8	A316DMC1
6410W18	SES Phase II - N.Y.C.	2642	VP-797120	Center CCW	A431C32	DPST	177CB8	A316DMC1
6410W19	SES Phase II - Chicago	5957(SA)	VP-797110	Center	A431C31	DPST	177CB8	A316DMC1
6410W34	SES Phase I N.Y.C. - 1987	2642	VP-797120	Center CW	A431C32	DPST	177CB8	A316DMC1
6410W35	SES Phase II N.Y.C. - 1987	2642	VP-797120	CCW	A431C33	DPST	177CB8	A316DMC1
6410W38	SES Phase I - Mass.	3502	VP-797130	Center CW	A431C35	DPDT	177CB7	A316DMC1
6410W39	SES Phase II - Mass.	3502	VP-797130	Center CW, CCW	A431C36	4PDT	177CB9	A316DMC1

SPL 31-6410W - Advanced Fixture - Part 6410W Keyswitch Assembly

Page 10

See TIP 4.0-19 Tutorial for Application Instructions

KEYSWITCH ASSM.: EXISTING / REPLACEMENT	FUNCTION	TERMINAL IDENTIFICATION CHANGES				
		EXISTING/ REPLACEMENT				
6410W2	Emergency Power (Hall)	1	10	9	11	
AAA6410AB29		2	4	6	1, 3, 5, or 7	
6410W5	Park Car-to-Lobby (Hall)	8	9	10		
AAA6410AB30		1 or 3	4	2		
6410W6	Access (Hall)	2	3	8	9	10
AAA6410AB31		7 or 5	8 or 6	1	4 or 2	3
6410W9	Security (COP)	2	3	4		
AAA6410AB26		1	2 or 4	3		
6410W21	Independent Service (ETO) (COP)	2	3	4		
N/A		1	2 or 4	3		
6410W22	Light or Fan, (ETO) (COP)	1	7	8		
AAA6410AB27		1	3	2*		
6410W23	Inspection/Ind. Svc./Light/ 1-Speed Fan (COP)	1	7	8		
AAA6410AB27		1	3	2*		
6410W24	Hospital Service (COP)	1	7	8		
AAA6410AB25		1	3	2*		
6410W25	SES Phase 2 (ANSI)	1	7	8		
N/A		1	3	2*		
6410W27	Fan, 2-Speed (COP)	2	7	8 & 1		
AAA6410AB12		4	2	1 or 3		
6410W29	Emergency Power (Hall)	7	9	10	11	
AAA6410AB29		2	4	6	1, 3, 5 or 7	
6410W31	In-Car Stop (COP)	1	4	5	8	
AAA6410AB11		1	4	3	2	
6410W33	Inspection Initiation-Canada		7	8		
AAA6410AB28		1	3	2*		

*Add jumper between terminal 2 & 4