

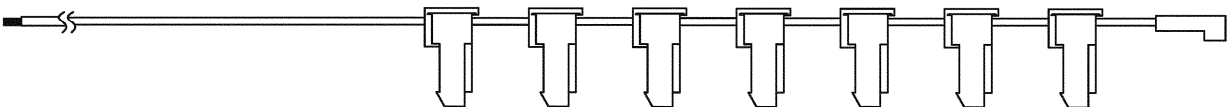
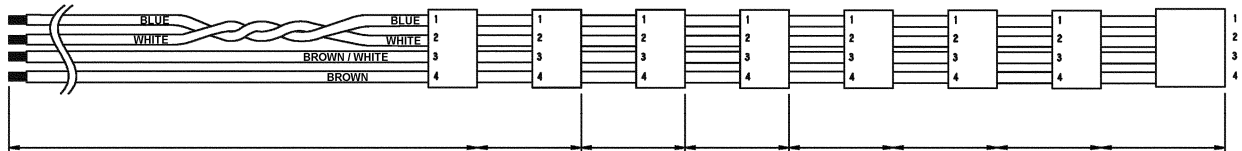
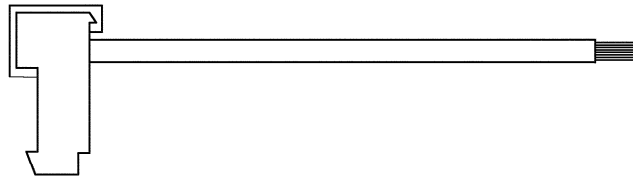
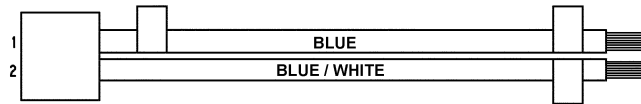
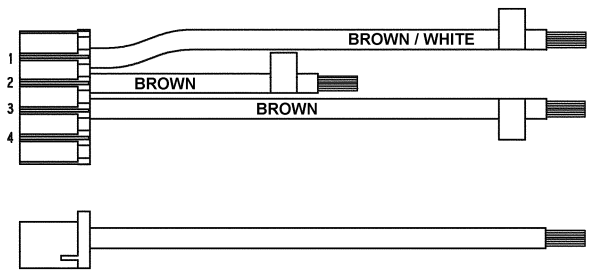
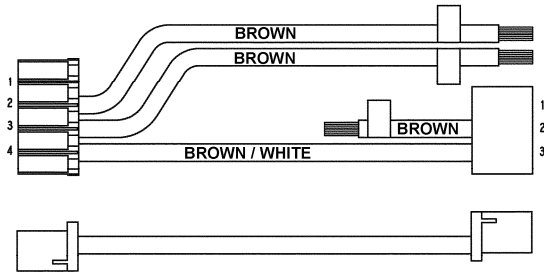
**Wiring Harness –
Series 2, 4, 5, & 6 COPs
(Traction Systems)**

Spare Parts Leaflet

31-AAA174ABH

April 28, 2009 / Page 1 of 13

W/O VINTAGE



OTIS

Safety First!

**SERVICE ENGINEERING
Otis Elevator Company
Bloomfield, Connecticut USA**

Leaflet Description

This leaflet lists the electrical cables for series 2, 4, 5, and 6 COPs. These cables are for RSL COP wiring jumpers on traction products.

Leaflet Revisions

Date Revised	Subject Matter Expert	Reason for Revision
June 10, 2006	Joseph Zych	New SPL
June 16, 2008	Joseph Zych	Added arrangements AAA174ABH37 through 47
April 28, 2009	Joseph Zych	Corrected acronym CCB on p. 3

Related Drawings

Drawing No.	Title	Drawing No.	Title
AAA174ABH	Cable, Electrical, Series 5 RSL COP Wiring Jumpers, Traction Products	---	---
---	---	---	---

Related Documents

Document ID	Title
---	---
---	---

Subject Matter Expert

Name	Department
Joseph Zych	OSC Service Engineering

About Spare Parts Leaflets...

This document lists the lowest replaceable units (LRUs) for the standard version of the product. The LRUs are chosen by a team of Otis associates representing engineering and manufacturing.

While goal of this document is to make parts identification as easy as possible, the document cannot be all-inclusive. Elevator and escalator contracts classified as "special" or "custom" are not addressed here. For such contracts, please refer to specified information, the contract folder, TIPs, Field Education Articles, Construction Letters, etc. for further information.

If you have any suggestions about this document, please contact the subject matter expert listed on this page.

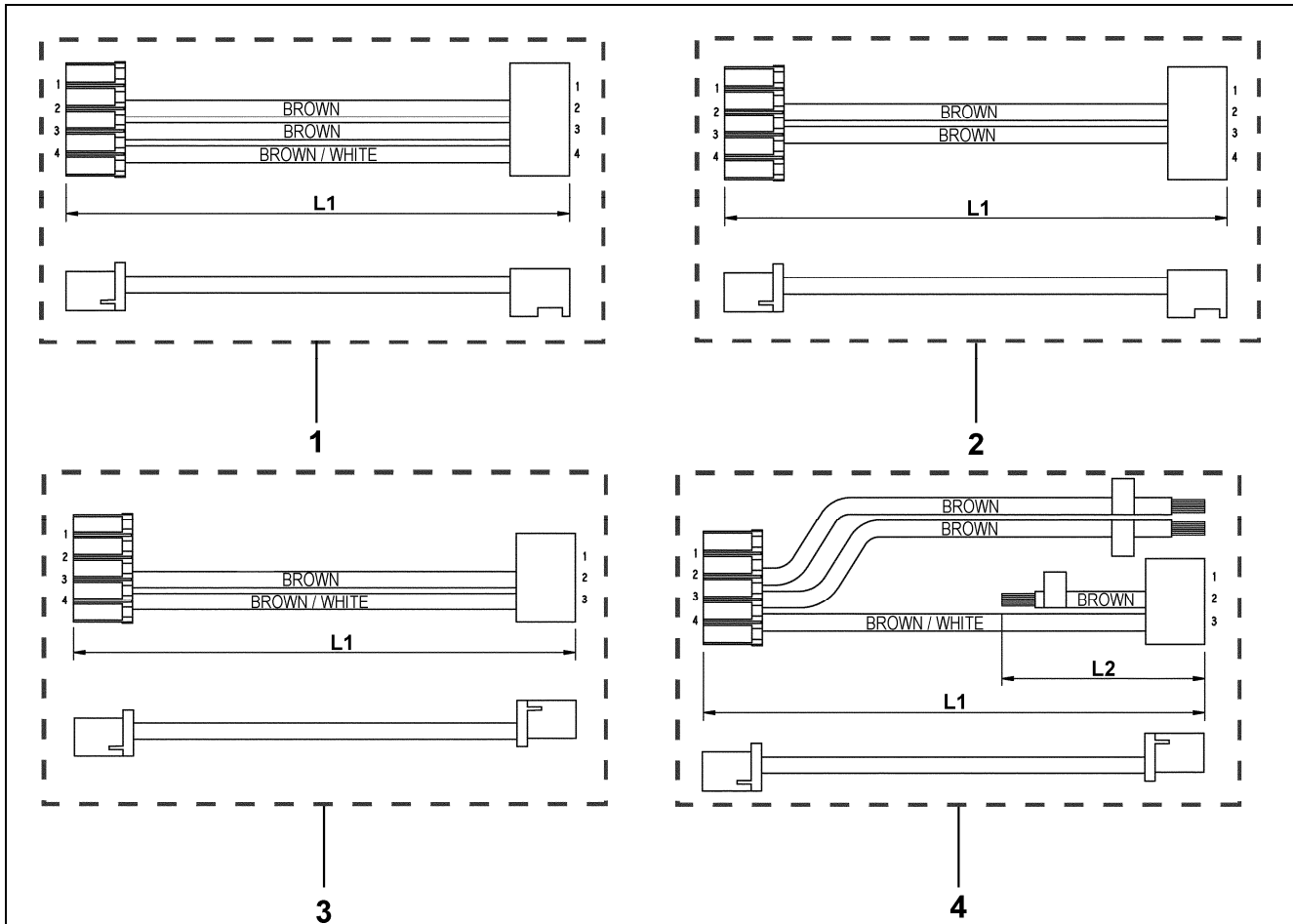
References for Acronyms

31-AAA174ABH

ACRONYMS	DESCRIPTION
CBT	Two Car Operating Panels
CC	Car Call
CCB	Call Cancel Button
CEMK	Car Emergency Medical Keyswitch
CEML	Car Emergency Medical Lamp
CEMLX	Car Emergency Medical Lamp (Aux COP)
CSAK	Car Secure Access Keyswitch
CSAL	Car Secured Access Light
CSALX	Car Secondary Access Lighting (Aux COP)
DCB	Door Close Button
DO	Door Open Relay
DRO	Doors, Rear Opening
EHSK	Emergency Hospital Service Keyswitch
EMT	Massachusetts Code, Emergency Medical Tech Operation
ES2	Emergency Service Phase II w/2-Position Keyswitch
ES3	Emergency Service Phase II w/3-Position Keyswitch
FLKA, B, C, D	Floor Lockout Switch No.
ISC	Independent Service
RDCB	Rear Door Close Button
SSA	Secure Access
SVC	Service Cabinet
XCBT	Without Car Call Button
XDO	MG Start and Door Open Switch
XDRO	Without Rear Opening Doors
XRDCB	Without Rear Door Close Button
XSVC	Without Service Cabinet

31-AAA174ABH

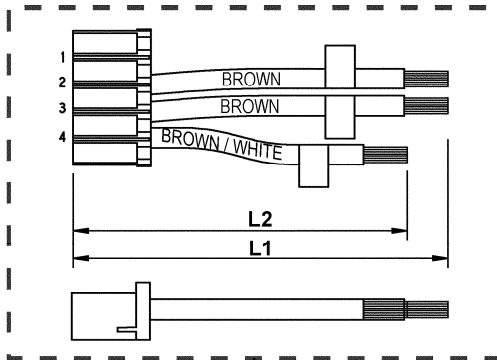
Electrical Cables



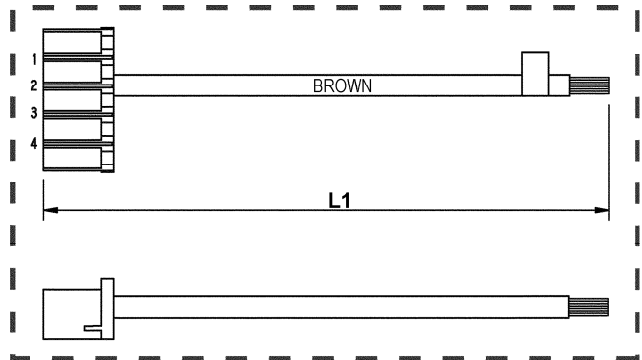
W/O VINTAGE			
REF. No.	PART No.	COP APPLICATION	L1 (L2) (mm)
1	AAA174ABH1	Main (CC) or Auxiliary (CCX)	280
	AAA174ABH2	Main (CC) or Auxiliary (CCX)	360
	AAA174ABH3	Main (CC) or Auxiliary (CCX)	440
	AAA174ABH4	Main (CC) or Auxiliary (CCX)	520
	AAA174ABH5	Main (CC) or Auxiliary (CCX)	600
	AAA174ABH6	Main (CC) or Auxiliary (CCX)	680
	AAA174ABH7	Main (CC) or Auxiliary (CCX)	760
	AAA174ABH8	Main (CC) or Auxiliary (CCX)	840
2	AAA174ABH9	Main (CCB)	530
	AAA174ABH27	Main (DCB, or RDCB, & XCBT)	860
3	AAA174ABH11	Auxiliary (CEMLX)	530
3	AAA174ABH13	Auxiliary (CSALX)	610
4	AAA174ABH10	Main (CEMK, CEML) (EMT)	530 (160)
4	AAA174ABH12	Main (CSAK, CSAL)	610 (160)

Electrical Cables

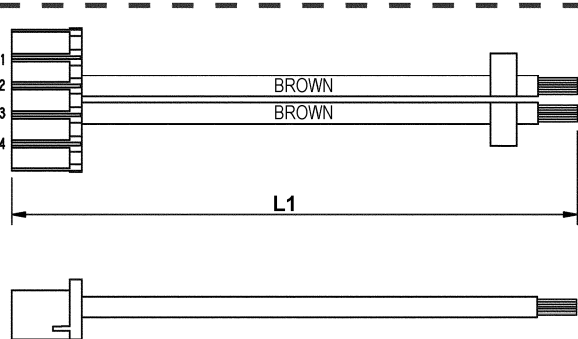
31-AAA174ABH



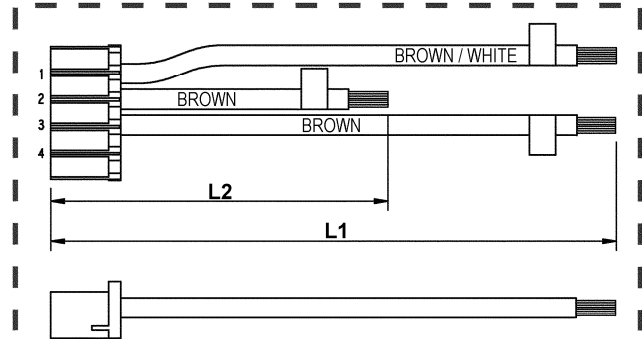
1



2

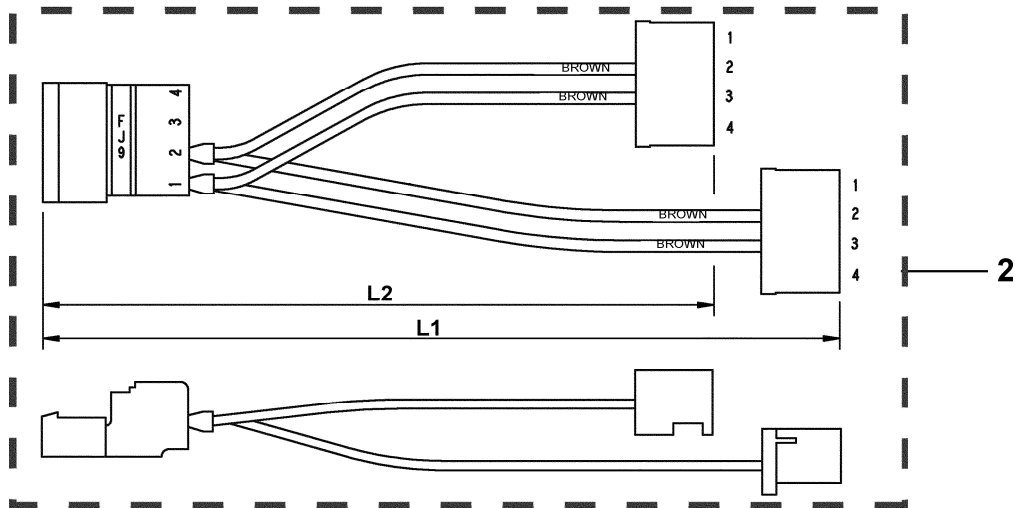
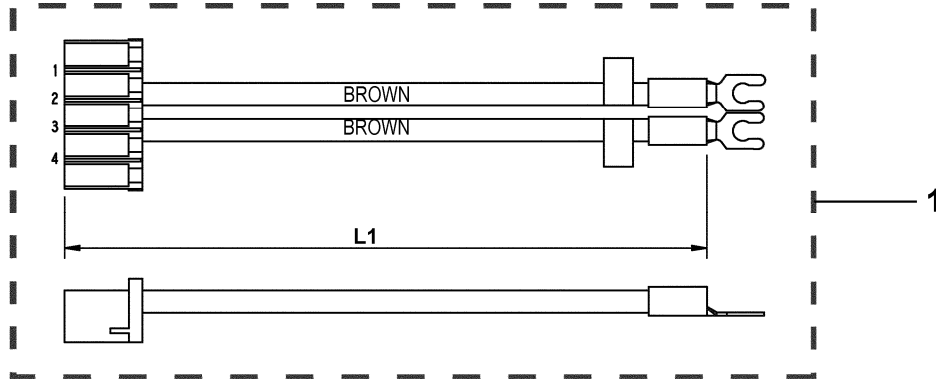


3



4

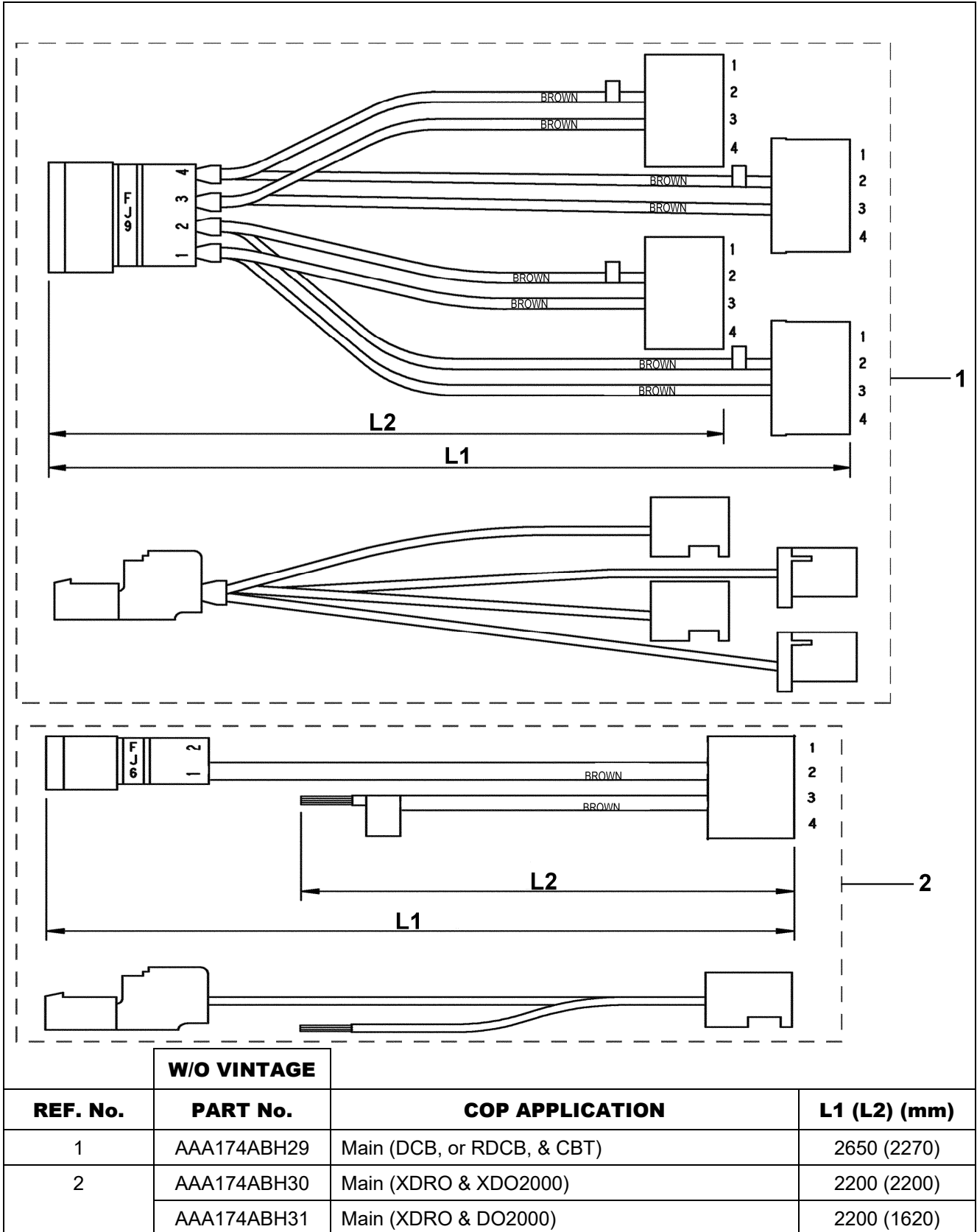
W/O VINTAGE			
REF. No.	PART No.	COP APPLICATION	L1 (L2) (mm)
1	AAA174ABH14	Main (ES2)	420 (300)
	AAA174ABH15	Main (ES3)	420 (300)
2	AAA174ABH16	Main (ES3)	530
	AAA174ABH20	Main (SSA & XDO2000)	610
3	AAA174ABH17	Main (EHSK)	530
	AAA174ABH18	Main (ISC & XSVC)	530
4	AAA174ABH21	Main (SSA & DO2000)	2090 (610)

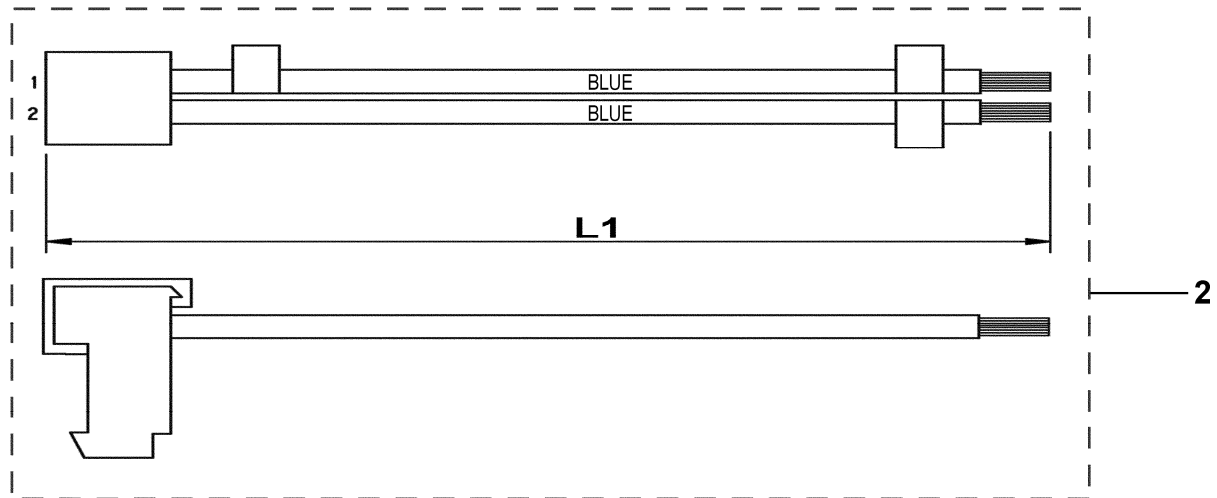
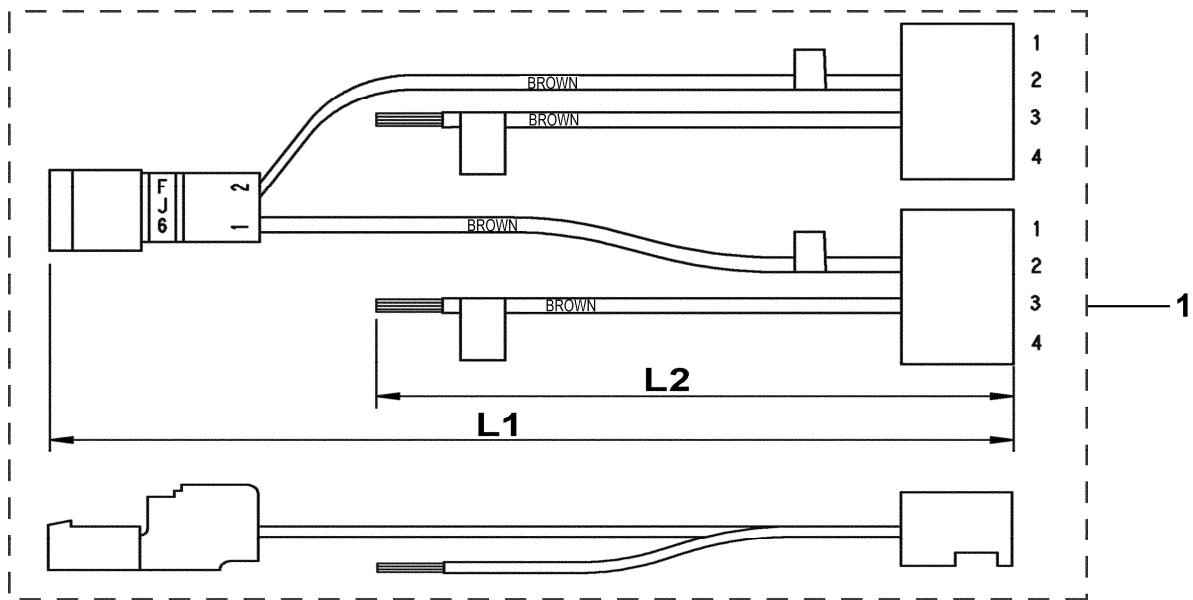


W/O VINTAGE			
REF. No.	PART No.	COP APPLICATION	L1 (L2) (mm)
1	AAA174ABH19	Main (ISC & SVC)	2460
	AAA174ABH22	Main (FLKA)	610
	AAA174ABH23	Main (FLKB)	610
	AAA174ABH24	Main (FLKC)	610
	AAA174ABH25	Main (FLKD)	610
2	AAA174ABH28	Main (DCB, or XRDCB, & CBT)	2650 (2270)

Electrical Cables

31-AAA174ABH

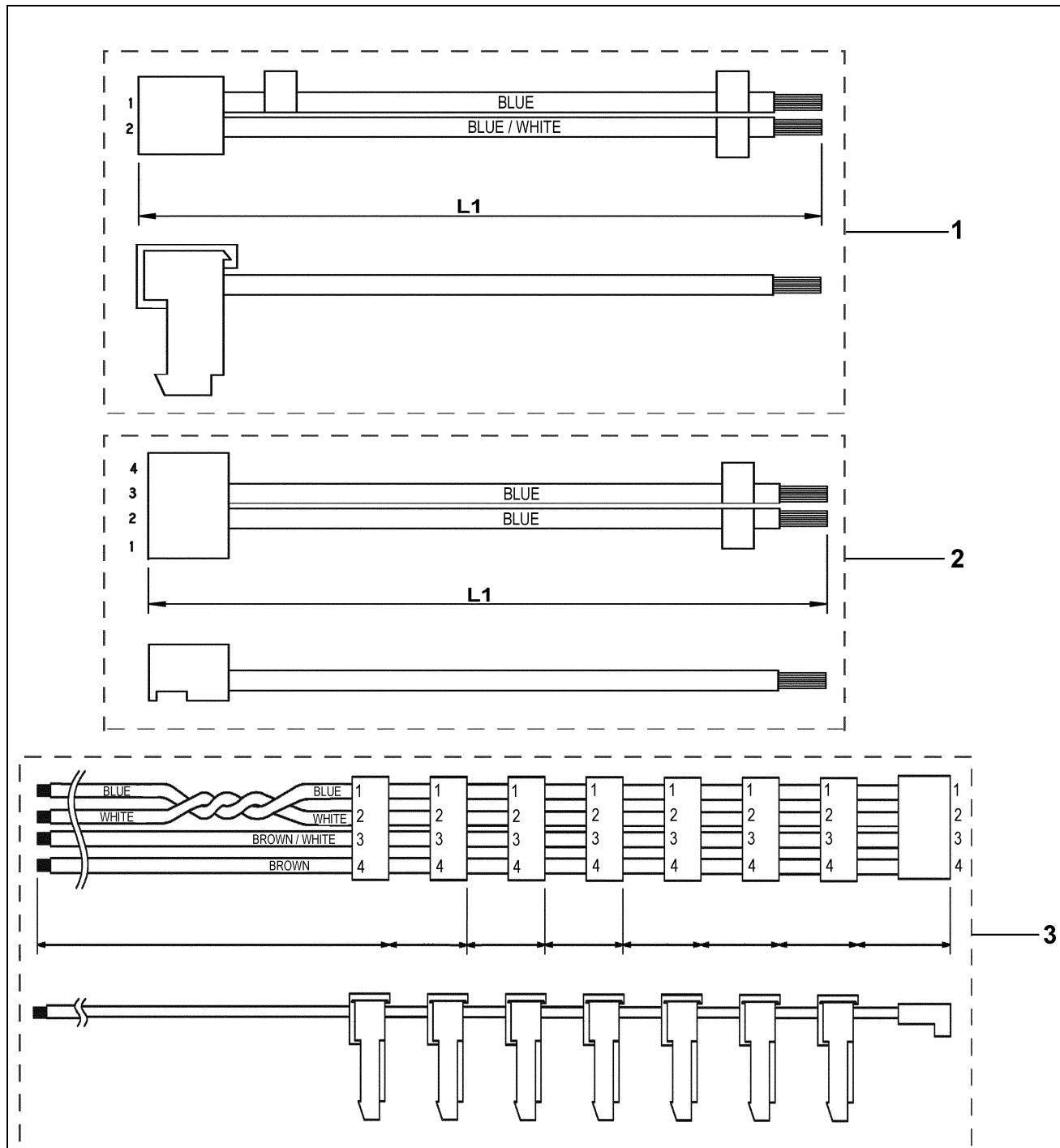




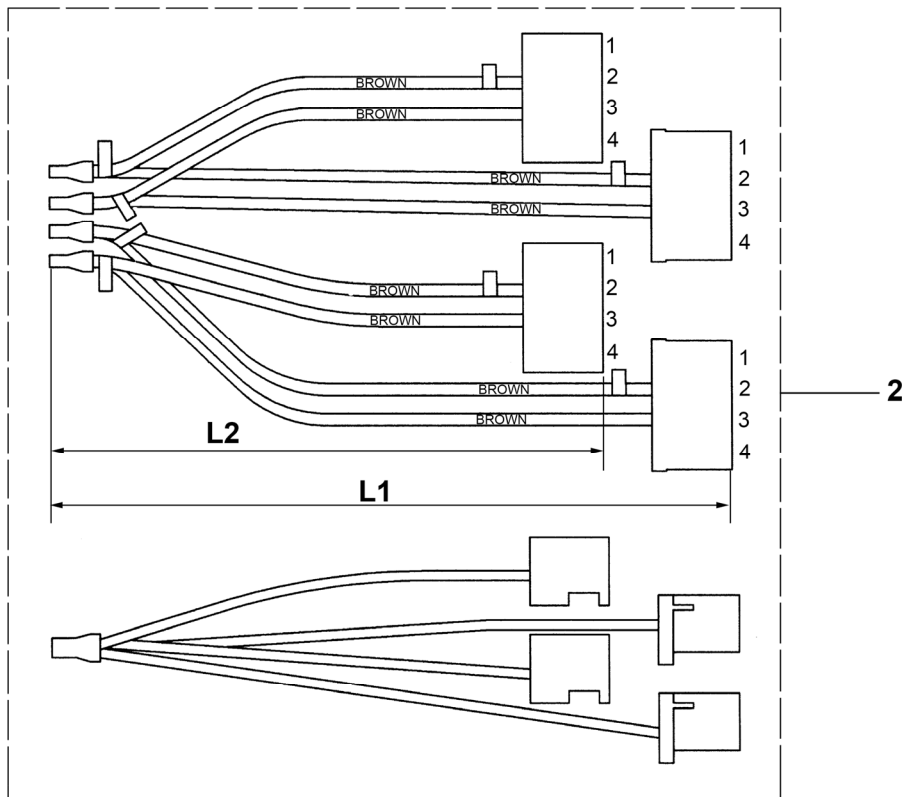
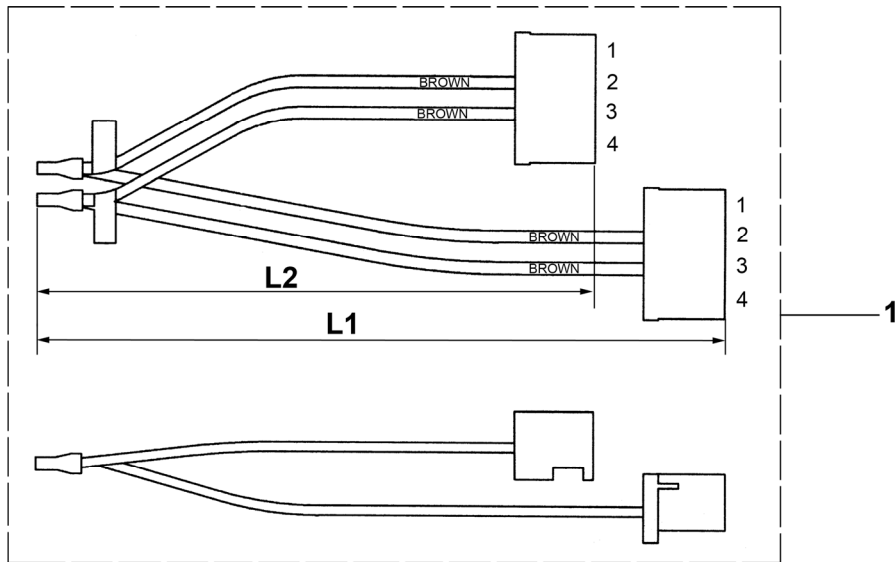
W/O VINTAGE			
REF. No.	PART No.	COP APPLICATION	L1 (L2) (mm)
1	AAA174ABH32	Main (DRO & XDO2000)	2200 (2200)
2	AAA174ABH33	Main (DRO & DO2000)	2200 (1620)
	AAA174ABH34	Main (Otis-supplied ADA phone)	2010

Electrical Cables

31-AAA174ABH



REF. No.	W/O VINTAGE PART No.	COP APPLICATION	L1 (L2) (mm)
1	AAA174ABH35	Main (Otis-supplied ADA phone)	1590
2	AAA174ABH36	Main (Otis-supplied ADA phone)	1590
3	AAA174ABH26	Main or Auxiliary (Spare Part)	---

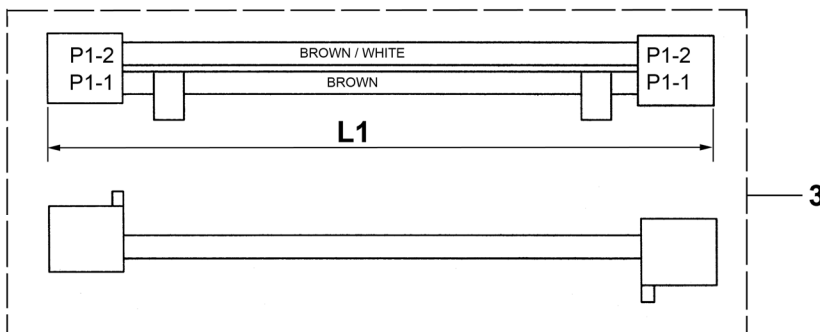
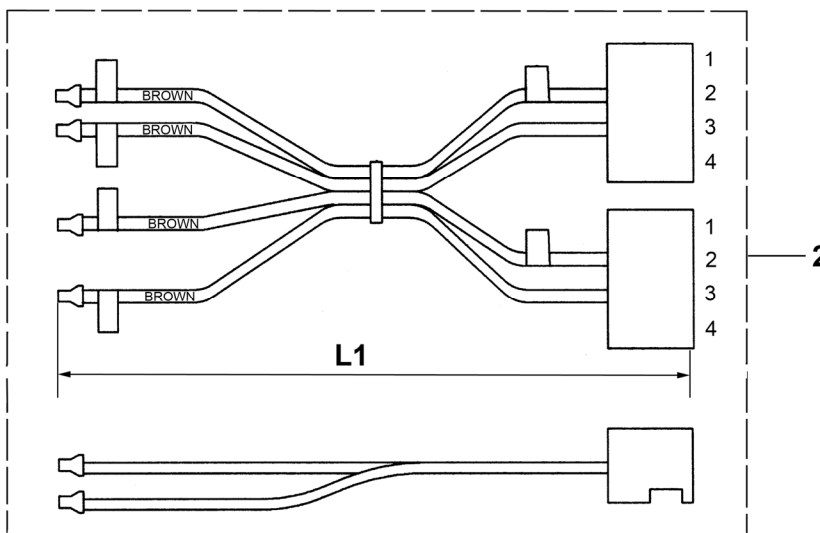
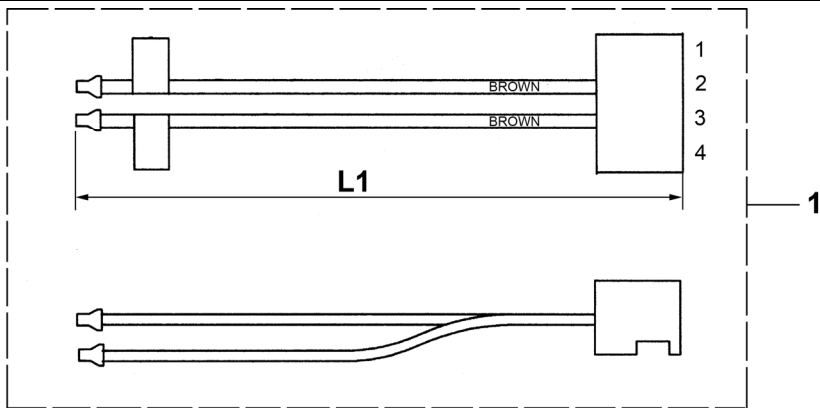


W/O VINTAGE

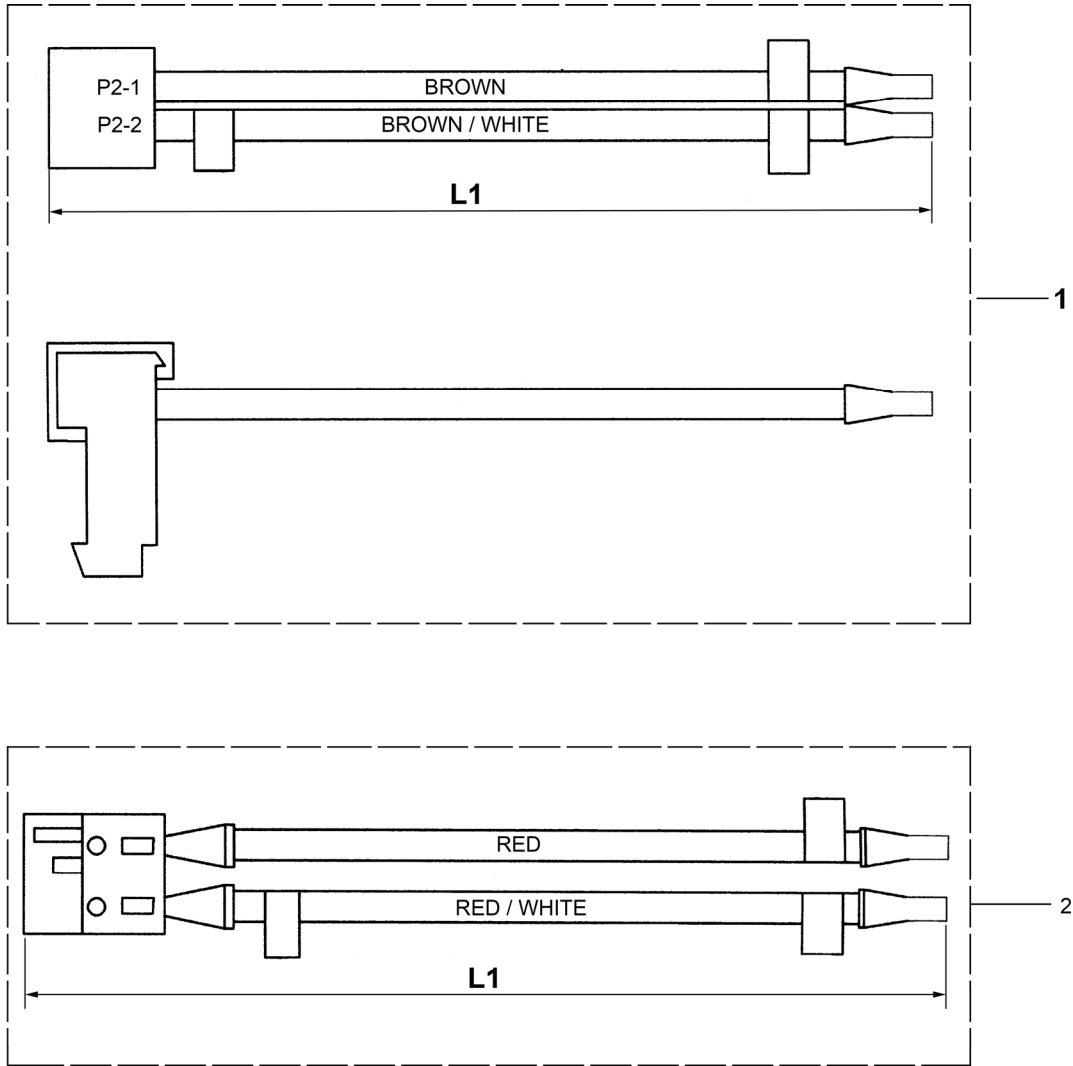
REF. No.	PART No.	COP APPLICATION	L1 (L2) (mm)
1	AAA174ABH37	Main (DCB & XRDCB & CBT)	2650 (2270)
2	AAA174ABH38	Main (DCB & RDCB & CBT)	2650 (2270)

Electrical Cables

31-AAA174ABH



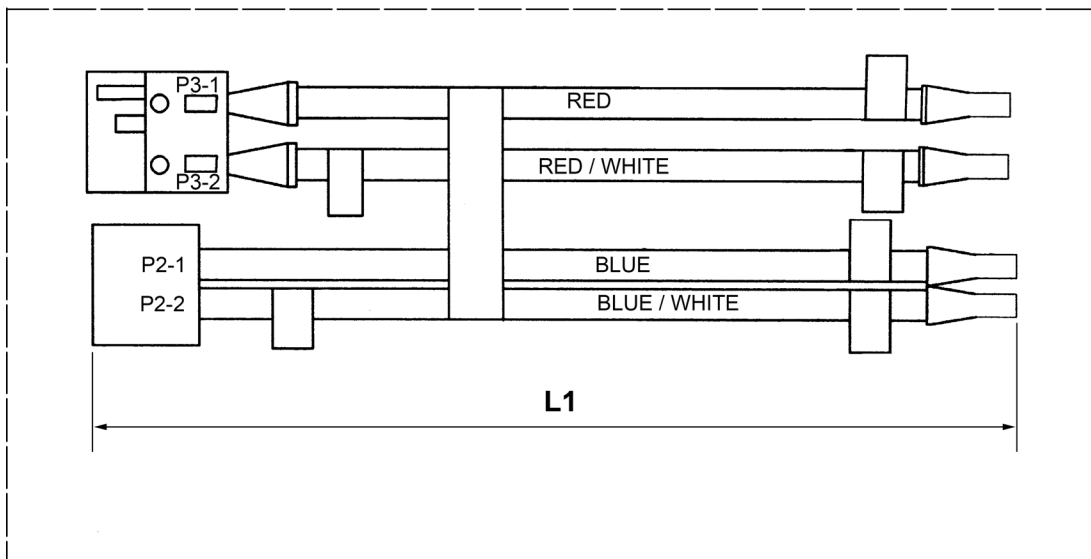
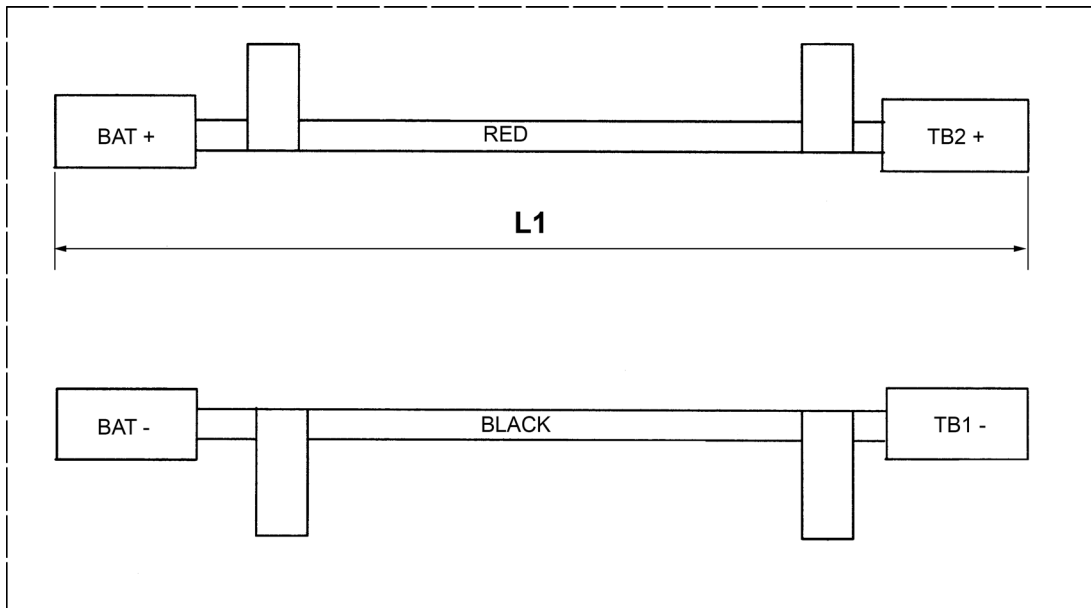
W/O VINTAGE			
REF. No.	PART No.	COP APPLICATION	L1 (mm)
1	AAA174ABH39	Main (XDRO & XDO2000)	2200
2	AAA174ABH40	Main (DRO & XDO2000)	2200
3	AAA174ABH41	Main (Emergency Light for LVM, LVE, LML, LVT)	3040



W/O VINTAGE			
REF. No.	PART No.	COP APPLICATION	L1 (L2) (mm)
1	AAA174ABH42	Main (Emergency Light for LVM, LVE, LML, LVT)	304
	AAA174ABH45	Main (FPROD2 = G2L)	1000
2	AAA174ABH43	Main (Emergency Light for LVM, LVE, LML, LVT)	750
	AAA174ABH46	Main (FPROD2 = G2L)	304

Electrical Cables

31-AAA174ABH



W/O VINTAGE			
REF. No.	PART No.	COP APPLICATION	L1 (L2) (mm)
1	AAA174ABH44	Main (Emergency Light for LVM, LVE, LML, LVT)	304
2	AAA174ABH47	Main (Emergency Light for GN2)	3530