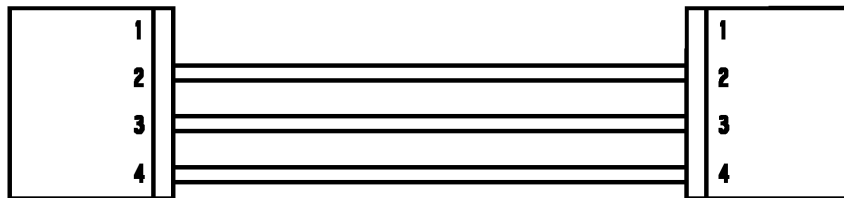
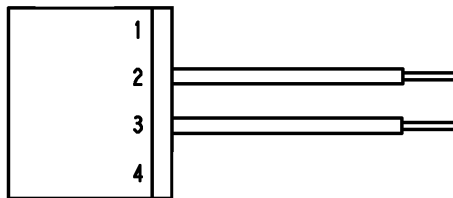


**Wiring Harness NRSEB,
RS-14**

Spare Parts Leaflet

31-AAA174XY

July 28, 2010 / Page 1 of 4



Leaflet Description

The leaflet lists the commonly used cable harnesses used on NRSEB and RS-14 PC boards.

Leaflet Revisions

Date Revised	Subject Matter Expert	Reason for Revision
July 28, 2010	Joseph Zych	New SPL

Related Drawings

Drawing No.	Title	Drawing No.	Title
ABA174XY	Cable, Electrical Jumpers		

Related Documents

Document ID	Title
---	---

Subject Matter Expert

Name	Department
Joseph Zych	OSC Service Engineering

About Spare Parts Leaflets...

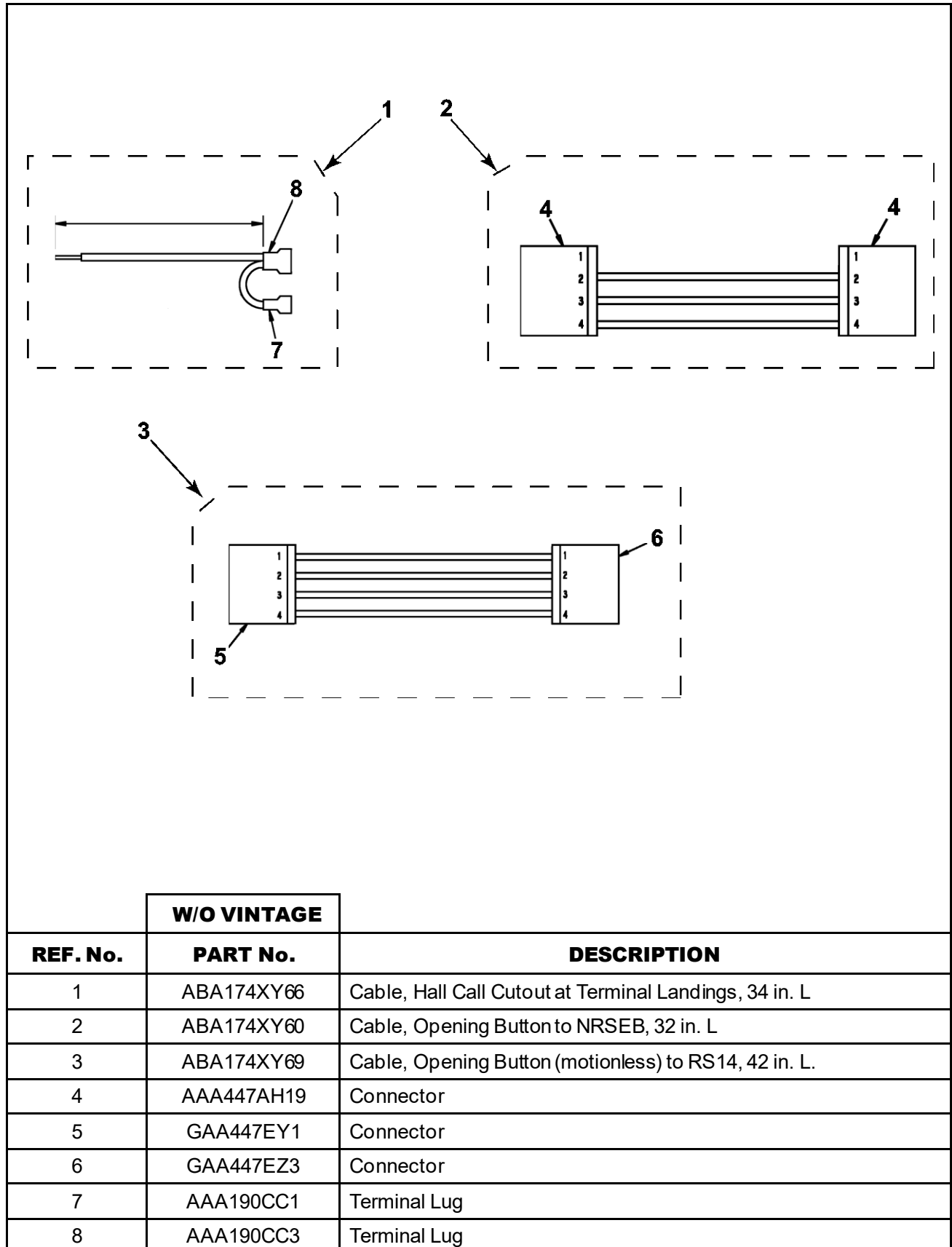
This document lists the lowest replaceable units (LRUs) for the standard version of the product. The LRUs are chosen by a team of Otis associates representing engineering and manufacturing.

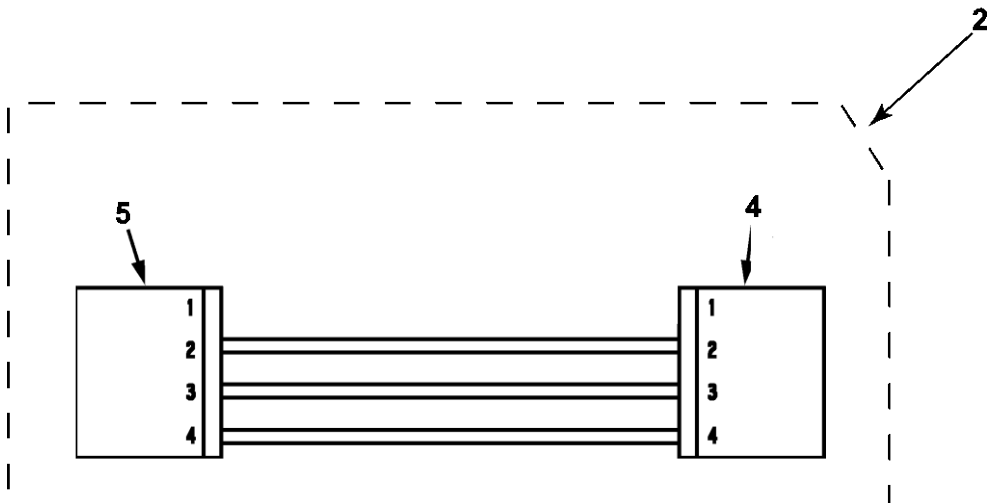
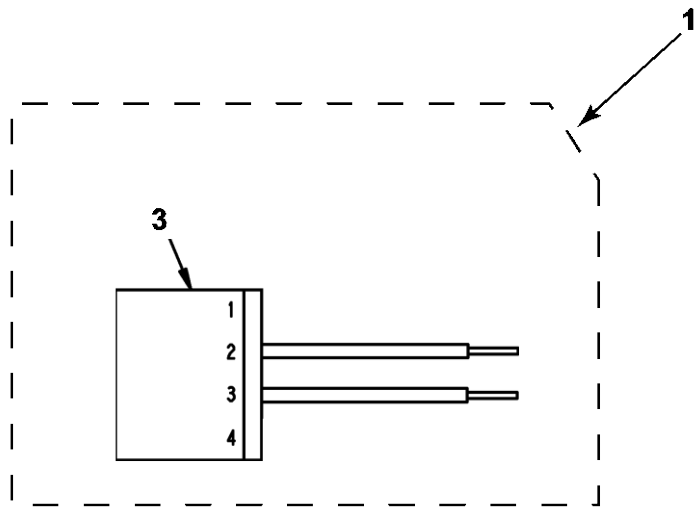
While goal of this document is to make parts identification as easy as possible, the document cannot be all-inclusive. Elevator and escalator contracts classified as "special" or "custom" are not addressed here. For such contracts, please refer to specified information, the contract folder, TIPs, Field Education Articles, Construction Letters, etc. for further information.

If you have any suggestions about this document, please contact the subject matter expert listed on this page.

Cable Assemblies

31-AAA174XY





W/O VINTAGE		
REF. No.	PART No.	DESCRIPTION
1	ABA174XY36	Cable, FLK (RS14) 34 in. L
2	ABA174XY42	Cable, Opening Button to NRSEB, 50 in. L
3	GAA447EY1	Connector
4	GAA447EZ3	Connector
5	AAA447AH19	Connector