

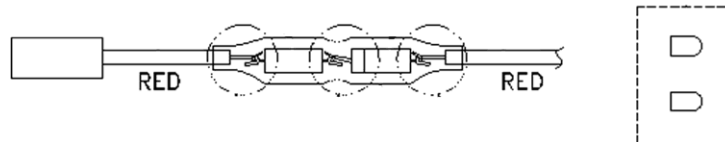
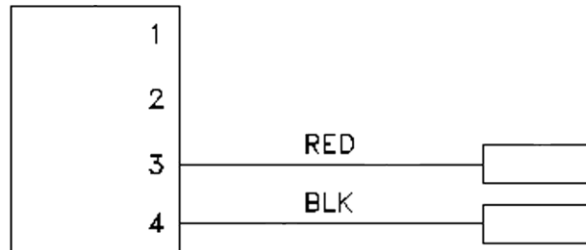
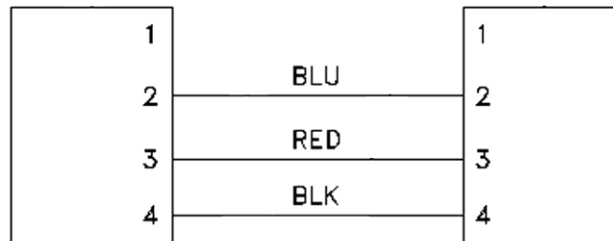
# Wiring Harness Hall Option

**Spare Parts Leaflet**

**31-AAA174YL**

**March 8, 2023 / Page 1 of 7**

## W/O VINTAGE



# OTIS

This document does not contain any technical data subject to EAR or ITAR

**SERVICE ENGINEERING**  
**Otis Elevator Company**  
**Bloomfield, Connecticut USA**

Unpublished Work—© Otis Elevator Co.; 2023

**Leaflet Description**

This leaflet describes the electrical cable assembly used in Hall Stations with RS14 NRSEB and RSL/CAN PC-boards.

**Leaflet Revisions**

<b>Date Revised</b>	<b>Subject Matter Expert</b>	<b>Reason for Revision</b>
November 25, 2008	Michael Bertini	New SPL
January 15, 2020	Joseph Zych	Added new arrangements on pp. 5 and 6 AAA174YL13 through 23
March 8, 2023	Vadzim Fedarenka	Updated Leaflet Description & SME on p. 2; Added new arrangements AAA174YL24–27 on p. 7; Updated description for items 9-11 on p. 4 and for items 18 & 20 on p. 6

**Related Drawings**

<b>Drawing No.</b>	<b>Title</b>	<b>Drawing No.</b>	<b>Title</b>
AAA174YL	Cable Electrical Assembly, NEL Hall Stations		

**Related Documents**

<b>Document ID</b>	<b>Title</b>
SPL 10-9693C	Remote Station and Interface for MCS Controller
SPL 10-AAA447AC	PC Board Mating Connectors

**Subject Matter Expert**

<b>Name</b>	<b>Department</b>
Vadzim Fedarenka	OSC Service Engineering

**About Spare Parts Leaflets...**

This document lists the lowest replaceable units (LRUs) for the standard version of the product. The LRUs are chosen by a team of Otis associates representing engineering and manufacturing.

While goal of this document is to make parts identification as easy as possible, the document cannot be all-inclusive. Elevator and escalator contracts classified as “special” or “custom” are not addressed here. For such contracts, please refer to specified information, the contract folder, TIPs, Field Education Articles, Construction Letters, etc. for further information.

If you have any suggestions about this document, please contact the subject matter expert listed on this page.

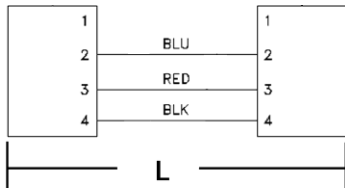


Fig. 1

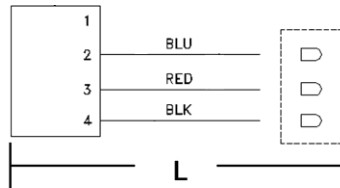


Fig. 2

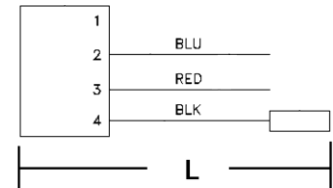


Fig. 3

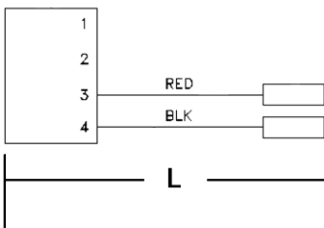


Fig. 4

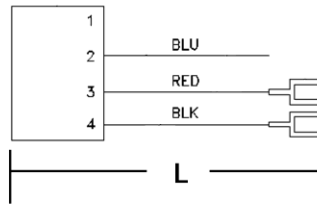


Fig. 5

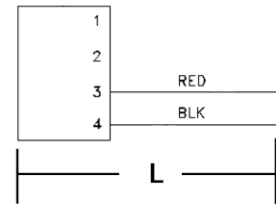
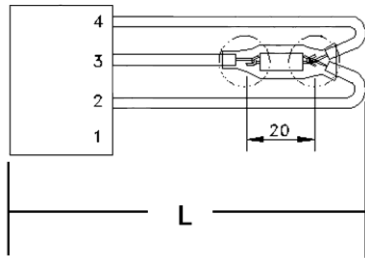


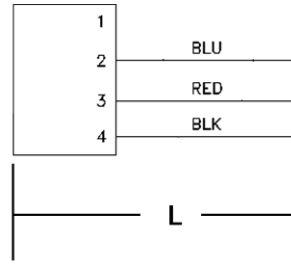
Fig. 6

W/O VINTAGE			
FIG. No.	PART No.	L (in.)	DESCRIPTION
1	AAA174YL1	15.0	Cable, RS14 to MM III (NEL) Button
	AAA174YL2	20.0	
2	AAA174YL3	8.0	Cable, MM III (NEL) Button to Hoistway Wire
3	AAA174YL4	15.0	Cable, RS14 to Illuminating Keyswitch
4	AAA174YL5	15.0	Cable, RS14 to Keyswitch LED
5	AAA174YL6	15.0	Cable, RS14 to GAL Jewel
6	AAA174YL7	15.0	Cable, RS14 to NEL Jewel

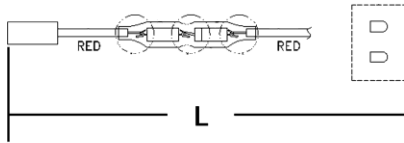
(Continued on next page)



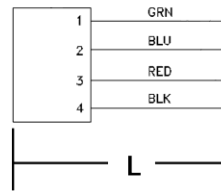
**Fig. 7**



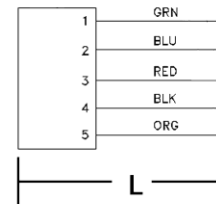
**Fig. 8**



**Fig. 9**



**Fig. 10**



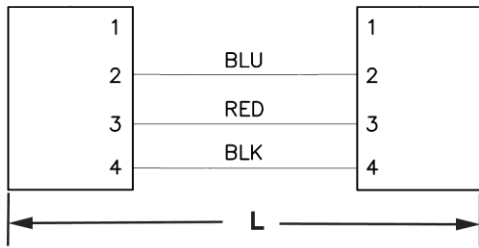
**Fig. 11**

<b>W/O VINTAGE</b>			
<b>FIG. No.</b>	<b>PART No.</b>	<b>L (in.)</b>	<b>DESCRIPTION</b>
7	AAA174YL8	---	Cable, RS14 Loop Back
8	AAA174YL9	15.0 (red wire 20.0)	Cable, RS14 to Keyswitch and Jewel
9	AAA174YL10	8	Cable, for 115 VAC Keyswitch LED
10	AAA174YL11	8	Cable, RS14 FIELD Service Application (Remote Station)
11	AAA174YL12	8	

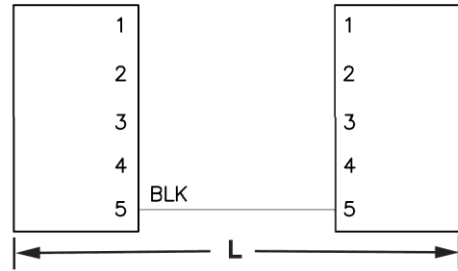
(Continued on next page)

# Electrical Cable Assembly

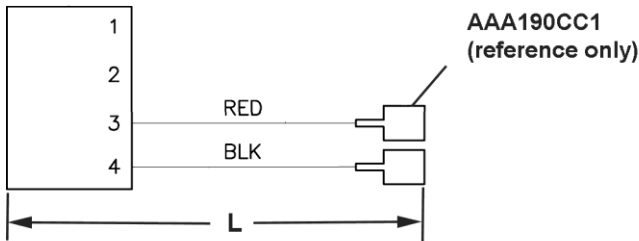
**31-AAA174YL**



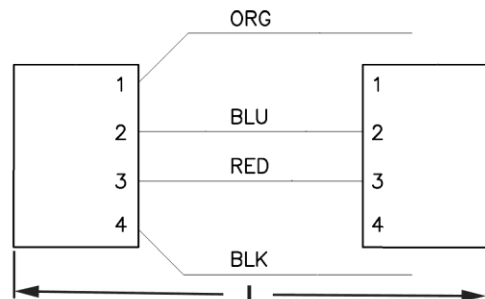
**Fig. 1**



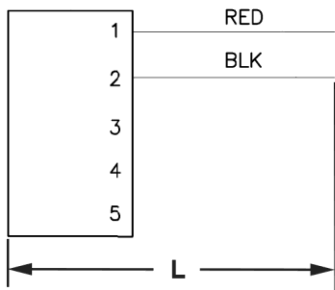
**Fig. 12**



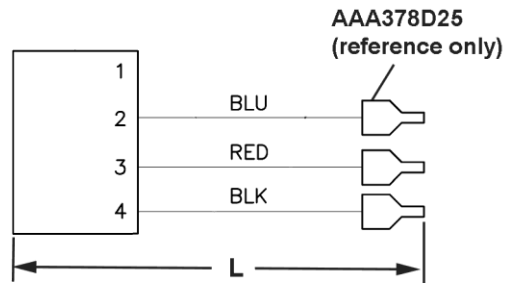
**Fig. 13**



**Fig. 14**



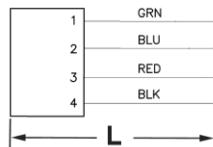
**Fig. 15**



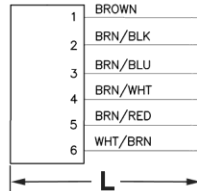
**Fig. 16**

W/O VINTAGE			
FIG. No.	PART No.	L (in.)	DESCRIPTION
1	AAA174YL13	4.5	Cable, RS14 Field Test Device
12	AAA174YL14	3.0	
13	AAA174YL15	15.0	Cable, ABA26800ASR/RS5
14	AAA174YL16	4.75	Cable, RS14 DOB Wire
15	AAA174YL17	6.0	Cable, RS14 24VDC Feed Wire
16	AAA174YL18	10.0	Cable, MMIII (NEL) Button / Hoistway Wire

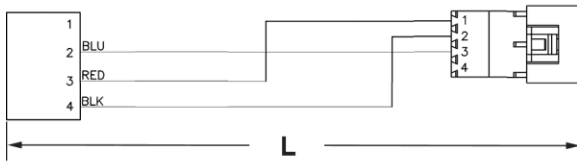
(Continued on next page)



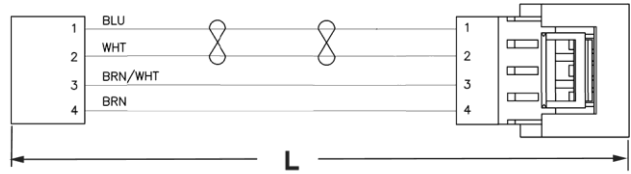
**Fig. 10**



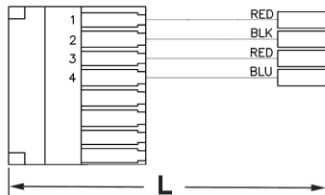
**Fig. 17**



**Fig. 18**



**Fig. 19**



**Fig. 20**

<b>W/O VINTAGE</b>			
<b>FIG. No.</b>	<b>PART No.</b>	<b>L (in.)</b>	<b>DESCRIPTION</b>
10	AAA174YL19	35.5	Cable, RS/CF14 Field Application
17	AAA174YL20	12.0	Cable, CF14 POS Indicator
18	AAA174YL21	8.0	Cable, MM-II ABA26800MR, MTA-100 to HE13 MAFELEC AAA23500CH Button
19	AAA174YL22	6.0	Cable, Adapter Harness
20	AAA174YL23	8.0	Cable, Adapter Harness, Dual HE13 to Butt Splice

(Continued on next page)

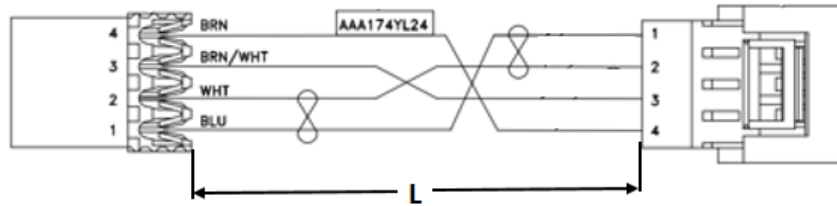


Fig.21

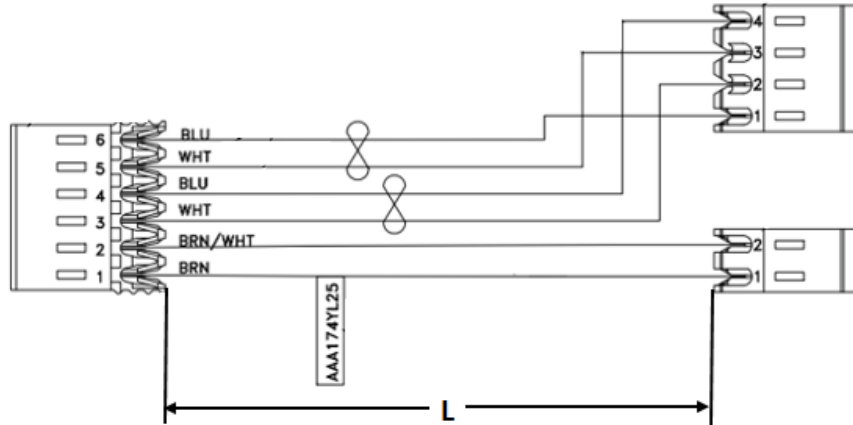


Fig.22

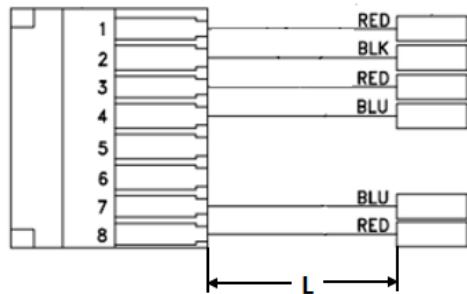


Fig.23

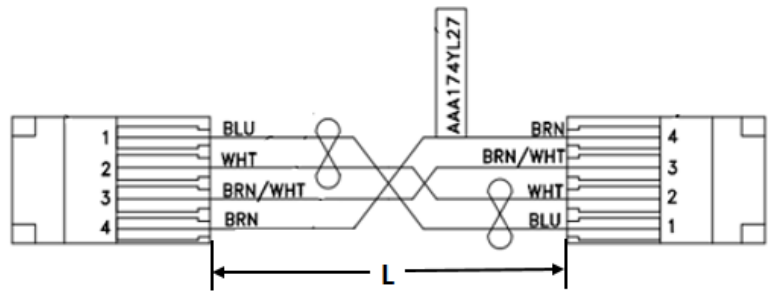


Fig.24

FIG. No.	PART No.	L (in./mm)	DESCRIPTION
21	AAA174YL24	6.0 / 150	Harness, Adaptor, HE13 Right Angle to MTA-156 Shrouded, RSL/CAN FEU Fixtures PCB ( <b>NOTE 1</b> )
22	AAA174YL25	16.0 / 400	Harness, Remote PI (ACA26800AJX), RSL/CAN FEU Fixtures PCB ( <b>NOTE 2</b> )
23	AAA174YL26	8.0 / 200	Harness, Adaptor, ECB2, AAA323DY & AAA323DZ
24	AAA174YL27	6.0 / 150	Harness, Adaptor, 176EW8/9, FEU RSL/CAN Fixtures

**NOTE 1:** Fixture Electronic Upgrade (FEU) includes A\*A26800BAN1, A\*A26800BBR1-4, A\*A26800BBT1-4, A\*A26800BCD1, A\*A26800BCM1, A\*A26800BCT1-4, A\*A26800BCE1-4, A\*A26800BCV1-4, & A\*A26800BDC1-4.

**NOTE 2:** For A\*A26800BAN1, A\*A26800BCD1, & A\*A26800BCM1.