

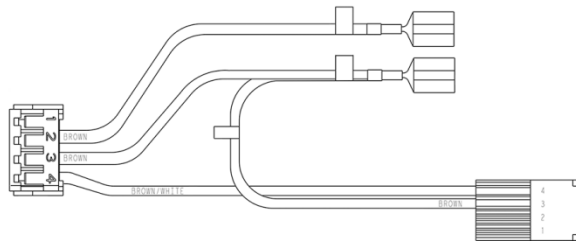
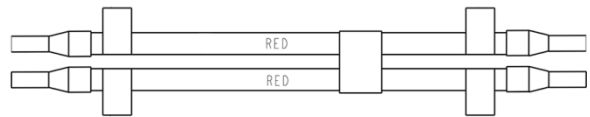
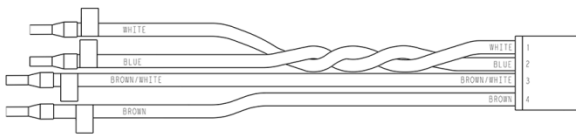
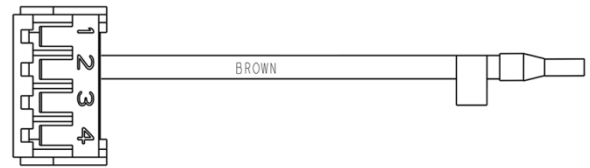
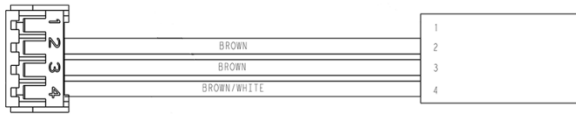
Car Prewiring COP and Hall

Spare Parts Leaflet

31-AAA25400BT

October 19, 2016 / Page 1 of 17

W/O VINTAGE



OTIS

SERVICE ENGINEERING

Otis Elevator Company

Bloomfield, Connecticut USA

Unpublished Work—© Otis Elevator Co.; 2016

Leaflet Description

This leaflet provides spare parts information for car rewiring.

Leaflet Revisions

Date Revised	Subject Matter Expert	Reason for Revision
February 24, 2016	Joseph Zych	New SPL
October 19, 2016	Joseph Zych	Added p/ns AAA25400BT76 through 80

Related Drawings

Drawing No.	Title	Drawing No.	Title
AAA25400BT	Car Rewiring COP and Hall		

Related Documents

Document ID	Title

Subject Matter Expert

Name	Department
Joseph Zych	OSC Service Engineering

About Spare Parts Leaflets...

This document lists the lowest replaceable units (LRUs) for the standard version of the product. The LRUs are chosen by a team of Otis associates representing engineering and manufacturing.

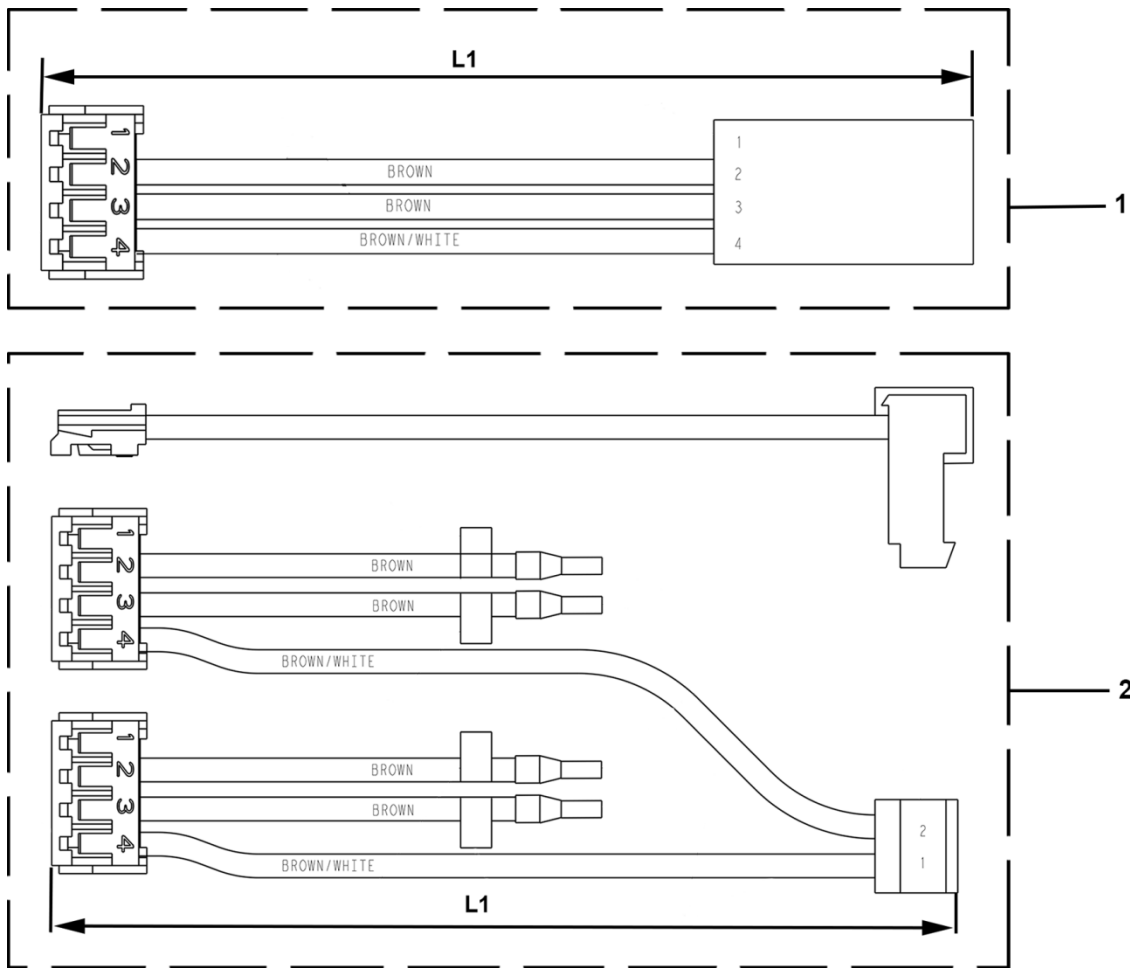
While goal of this document is to make parts identification as easy as possible, the document cannot be all-inclusive. Elevator and escalator contracts classified as “special” or “custom” are not addressed here. For such contracts, please refer to specified information, the contract folder, TIPs, Field Education Articles, Construction Letters, etc. for further information.

If you have any suggestions about this document, please contact the subject matter expert listed on this page.

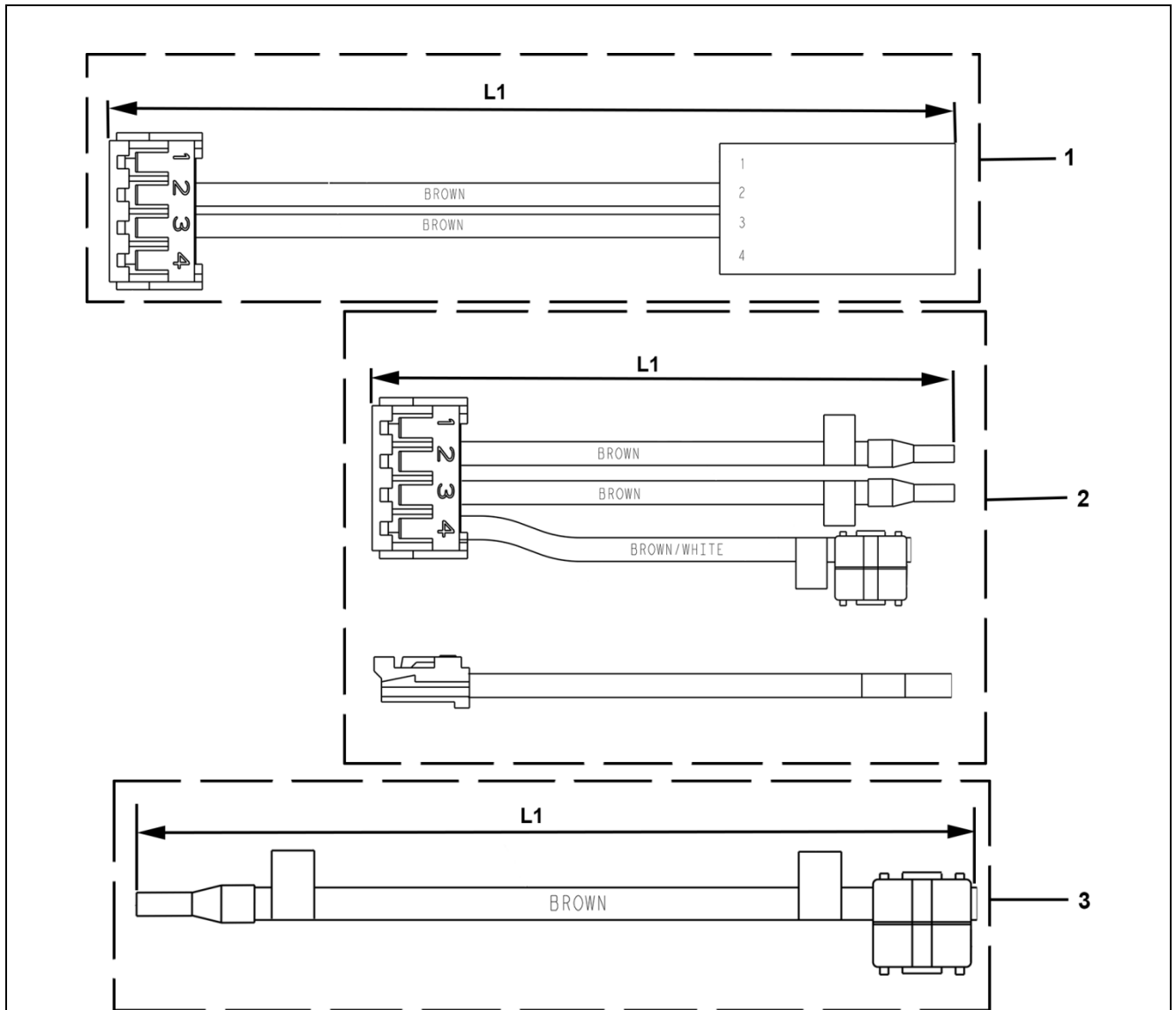
References for Acronyms

31-AAA25400BT

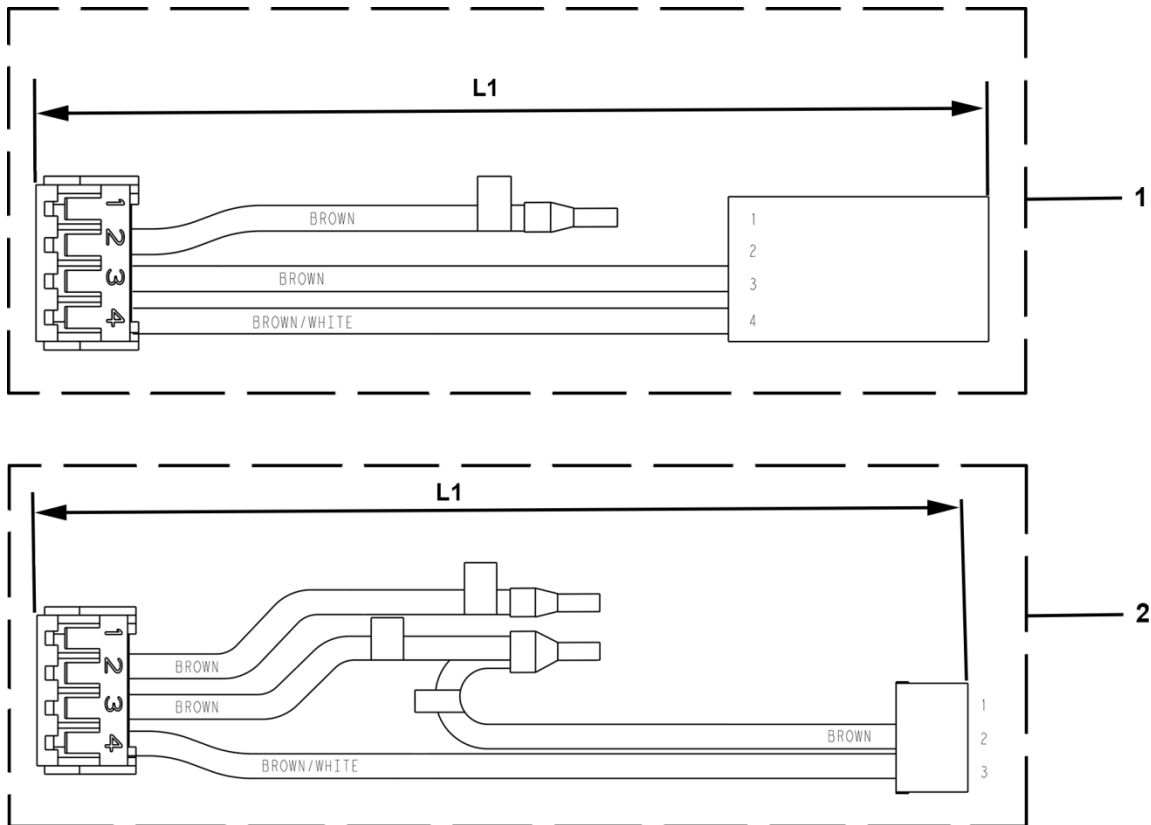
ACRONYMS	DESCRIPTION
CBT	Two Car Operating Panels
CC	Car Call
CCB	Call Cancel Button
CCBFF	Call Cancel Button, Firefighter's Service Panel
CEMK	Car Emergency Medical Keyswitch
CEML	Car Emergency Medical Lamp
CEMLX	Car Emergency Medical Lamp (Aux COP)
CSAK	Car Secure Access Keyswitch
CSAL	Car Secured Access Light
CSALX	Car Secondary Access Lighting (Aux COP)
DCB	Door Close Button
DO	Door Open Relay
DRO	Doors, Rear Opening
ECFF	Emergency Communications Failure Fixture
EFK	Emergency Recall Jewel
EHSK	Emergency Hospital Service Keyswitch
EMT	Massachusetts Code, Emergency Medical Tech Operation
EPSS	Emergency Power Selection Switch
ES2	Emergency Service Phase II w/2-Position Keyswitch
ES3	Emergency Service Phase II w/3-Position Keyswitch
ESTFF	Emergency Stop Switch toggle), Firefighter's Panel
FLKA, B, C, D	Floor Lockout Switch No.
FCL	Full Car Overload Light
FFOP	Firefighter's Operation Panel
LPT	Landing Passing Tone
ISC	Independent Service
ISS	Independent Service Switch
OPT	Door Open Protection Timer
RDCB	Rear Door Close Button
SSA	Secure Access
SVC	Service Cabinet
VOS	Speech Synthesis
XCBT	Without Car Call Button
XDO	MG Start and Door Open Switch
XDRO	Without Rear Opening Doors
XRDCB	Without Rear Door Close Button
XSVC	Without Service Cabinet



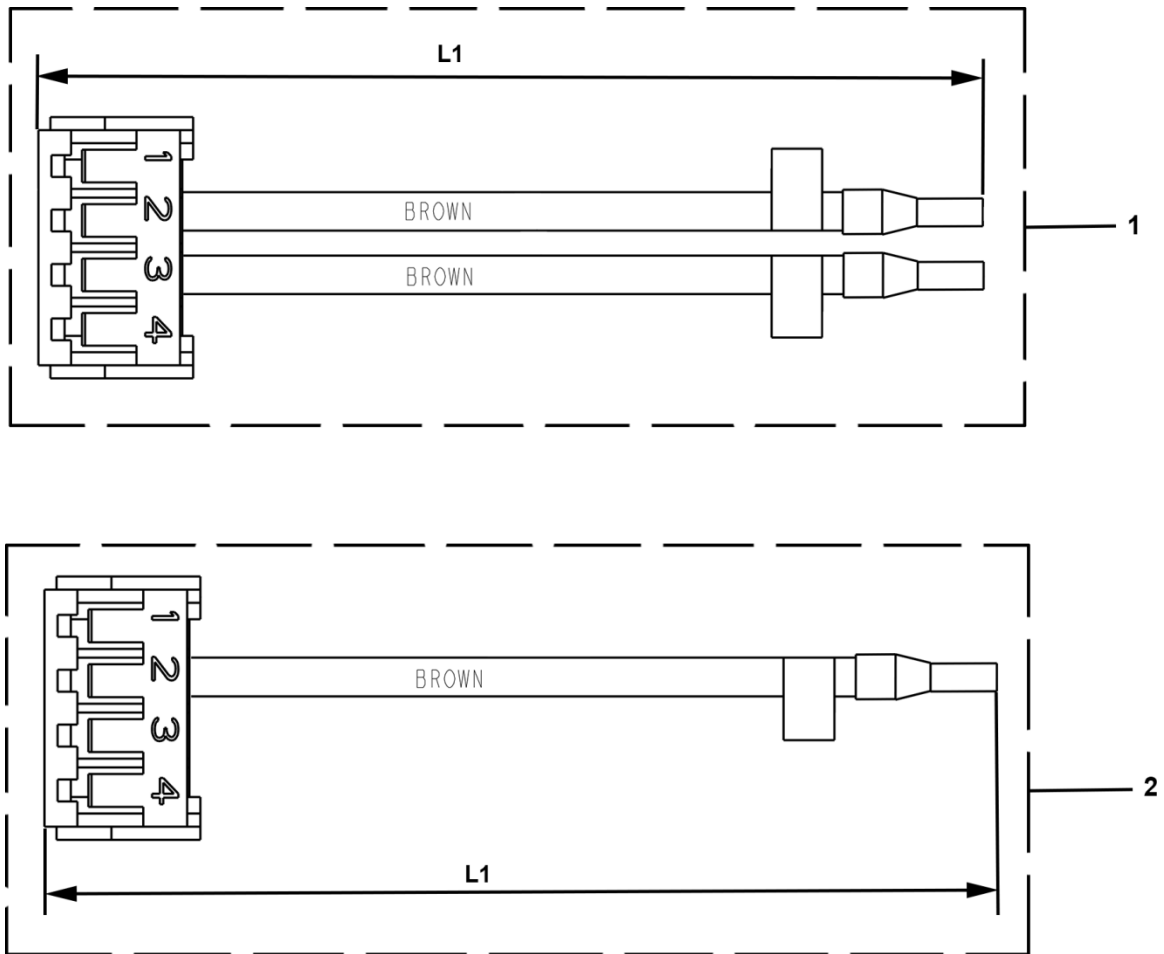
REF. No.	W/O VINTAGE PART No.	Application	L1 (mm)
1	AAA25400BT1	Buttons	420
	AAA25400BT2	Buttons	380
	AAA25400BT9	Buttons	340
	AAA25400BT10	Buttons	300
	AAA25400BT11	Buttons	500
	AAA25400BT12	Buttons	460
	AAA25400BT22	Buttons	260
	AAA25400BT30	Hall Fixture Buttons	175
	AAA25400BT35	Buttons	550
AAA25400BT36	Buttons	700	
2	AAA25400BT3	FLKA, FLKB, LPT, FCL	1650



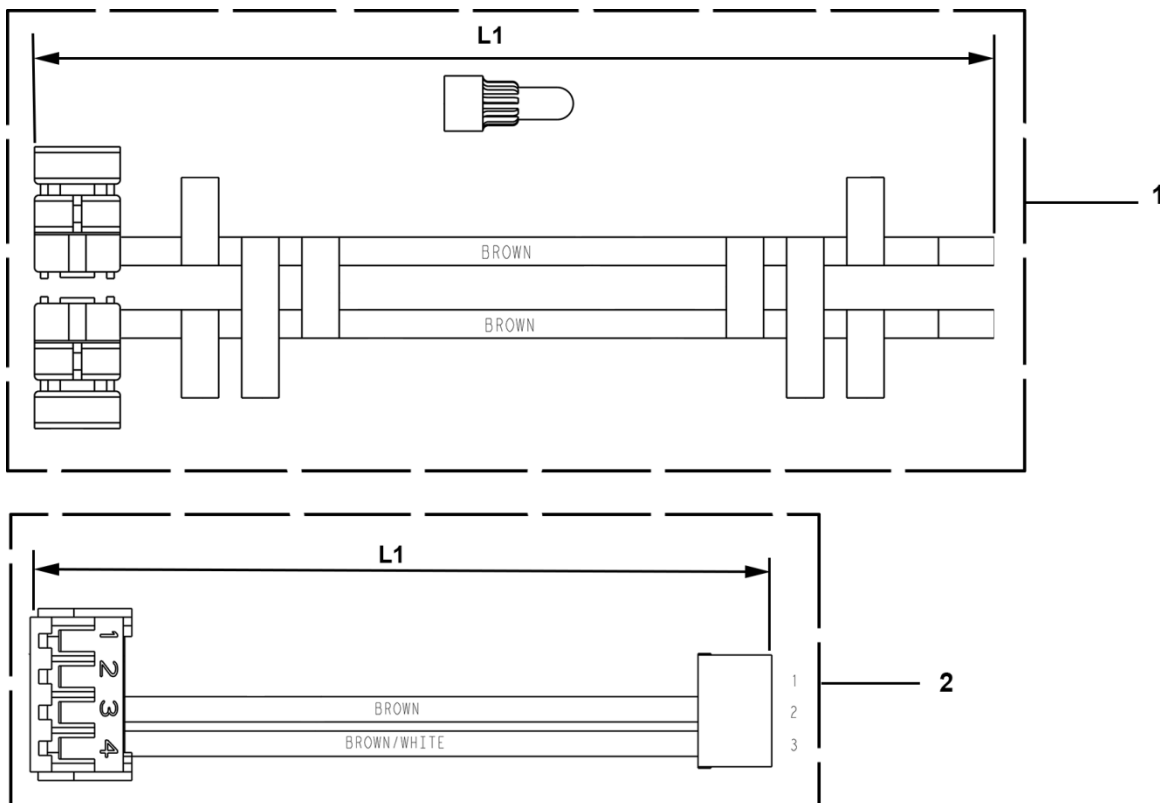
REF. No.	W/OVINTAGE PART No.	Application	L1 (mm)
1	AAA25400BT4	RDCB	915
	AAA25400BT8	CCBFF	650
	AAA25400BT37	DCB, RDCB	860
2	AAA25400BT5	EFK, Buzzer	635
	AAA25400BT23	Hall Fixture Option ECFF	275
	AAA25400BT28	Hall Fixture Option ECFF	150
3	AAA25400BT6	EFK, Buzzer	600



W/O VINTAGE			
REF. No.	PART No.	Application	L1 (mm)
1	AAA25400BT7	EFK, Fire Hat Jewel	660
2	AAA25400BT18	CSAK	850
	AAA25400BT25	Hall Fixture Option EPSE	200
	AAA25400BT26	Hall Fixture Option EPSE	75
	AAA25400BT27	Hall Fixture Option EPSE	175



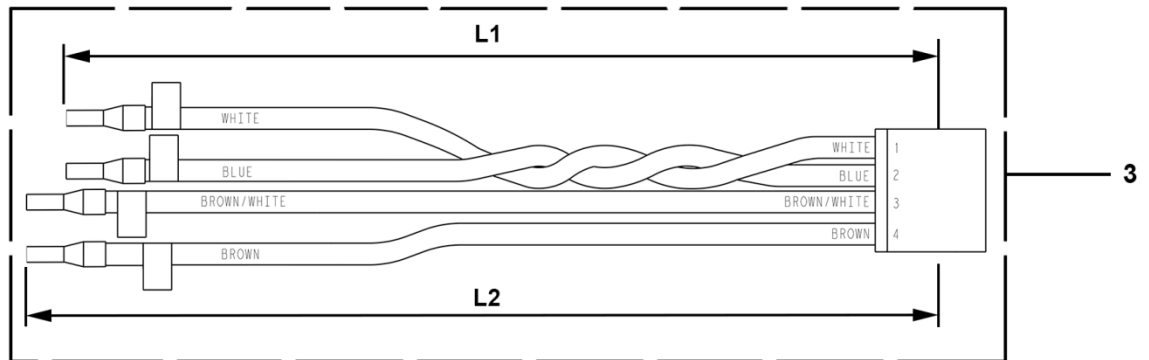
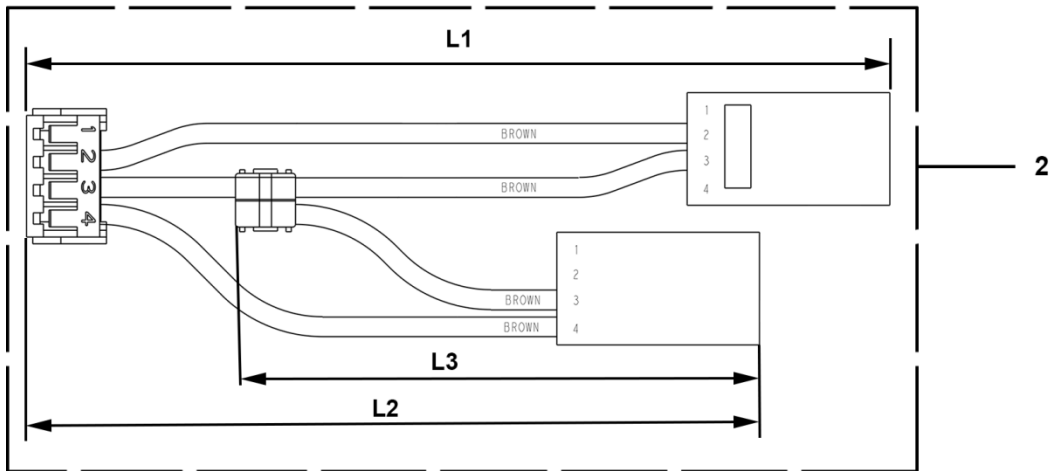
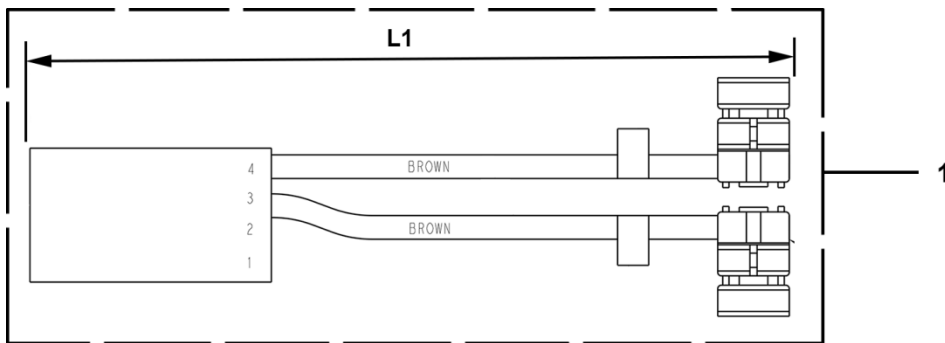
W/O VINTAGE			
REF. No.	PART No.	Application	L1 (mm)
1	AAA25400BT13	ISS	610
	AAA25400BT14	FLKC	850
	AAA25400BT15	FLKD	850
	AAA25400BT16	EHSK	850
	AAA25400BT29	Hall Fixture Floor Cutout	150
	AAA25400BT70	FFOP Only Door Close	585
2	AAA25400BT19	CSAK	850



REF. No.	W/O VINTAGE		L1 (mm)
	PART No.	Application	
1	AAA25400BT20	FFOP Door Open	1095
	AAA25400BT46	FFOP Door Close	510
	AAA25400BT47	FFOP Call Cancel	900
	AAA25400BT48	FFOP Rear Door Open	900
	AAA25400BT49	FFOP Rear Door Close	900
2	AAA25400BT21	Hall Fixture Jewels	125
	AAA25400BT31	Hall Fixture OPT Jewels	190

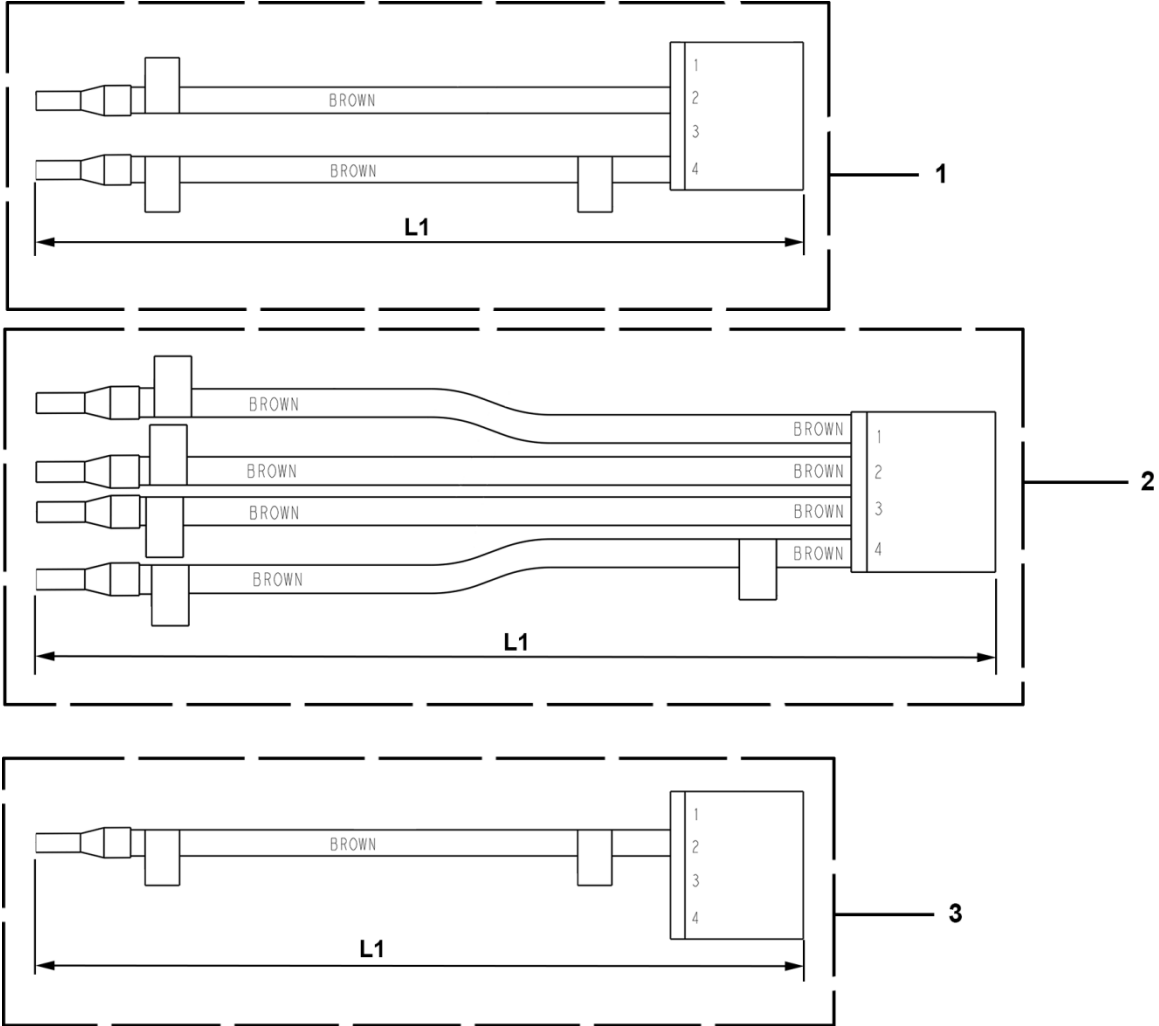
Cables, Prewiring

31-AAA25400BT

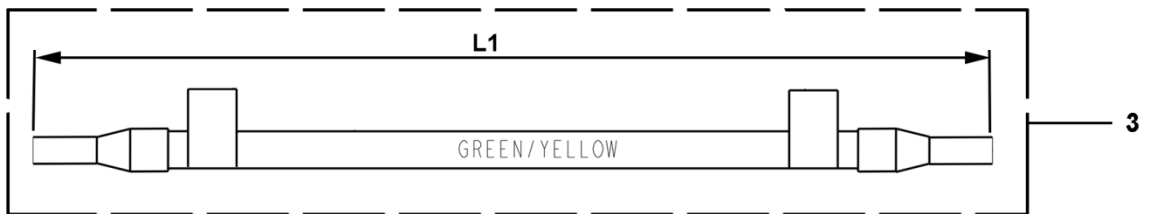
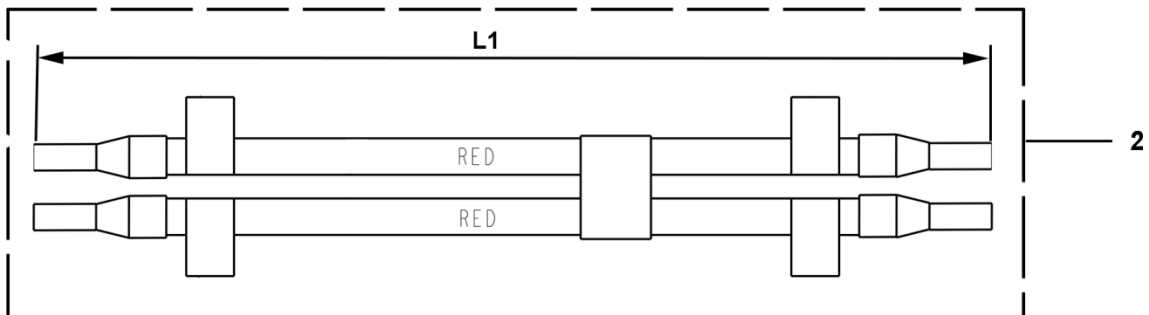
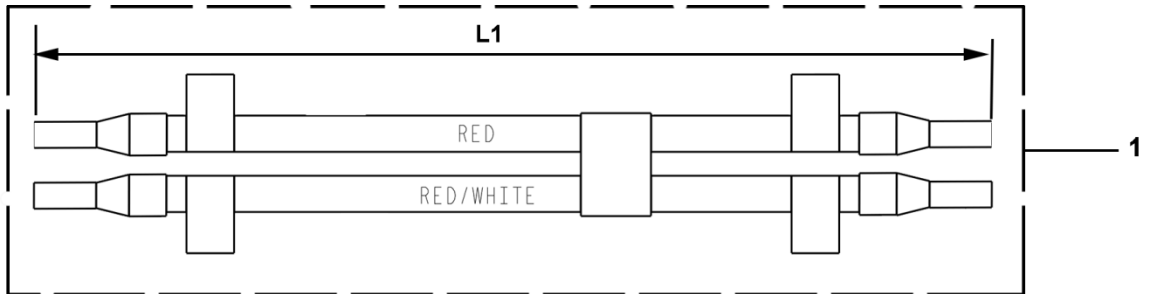


W/O VINTAGE

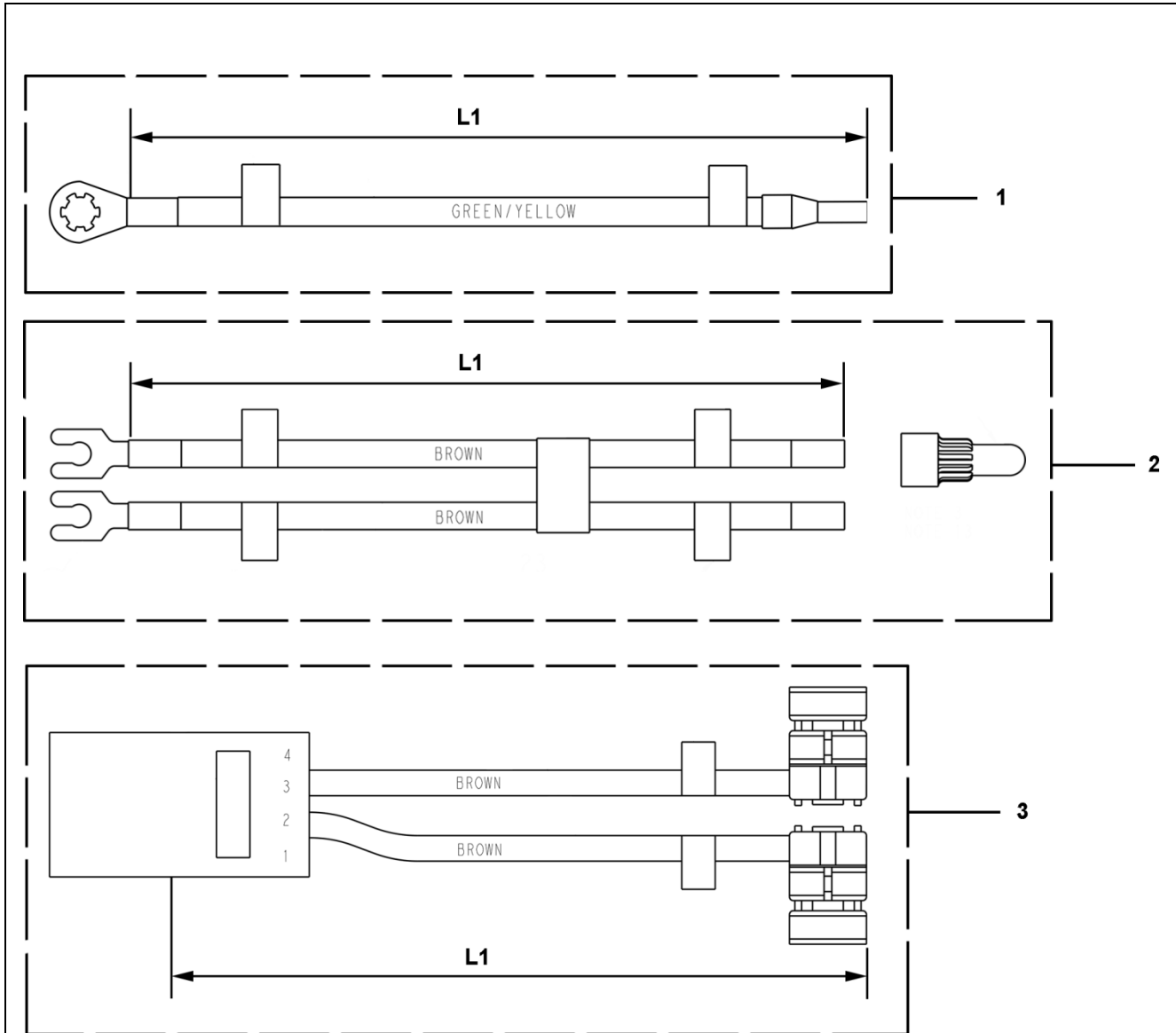
REF. No.	PART No.	Application	L1 (mm)	L2 (mm)	L3 (mm)
1	AAA25400BT32	FFOP Fire Hat Jewel	460	---	---
2	AAA25400BT38	DCB	860	350	300
3	AAA25400BT39	Hydro AT400 Front Door Connections	152	152	---
	AAA25400BT51	Hydro AT400 Rear Door Connections	152	---	---



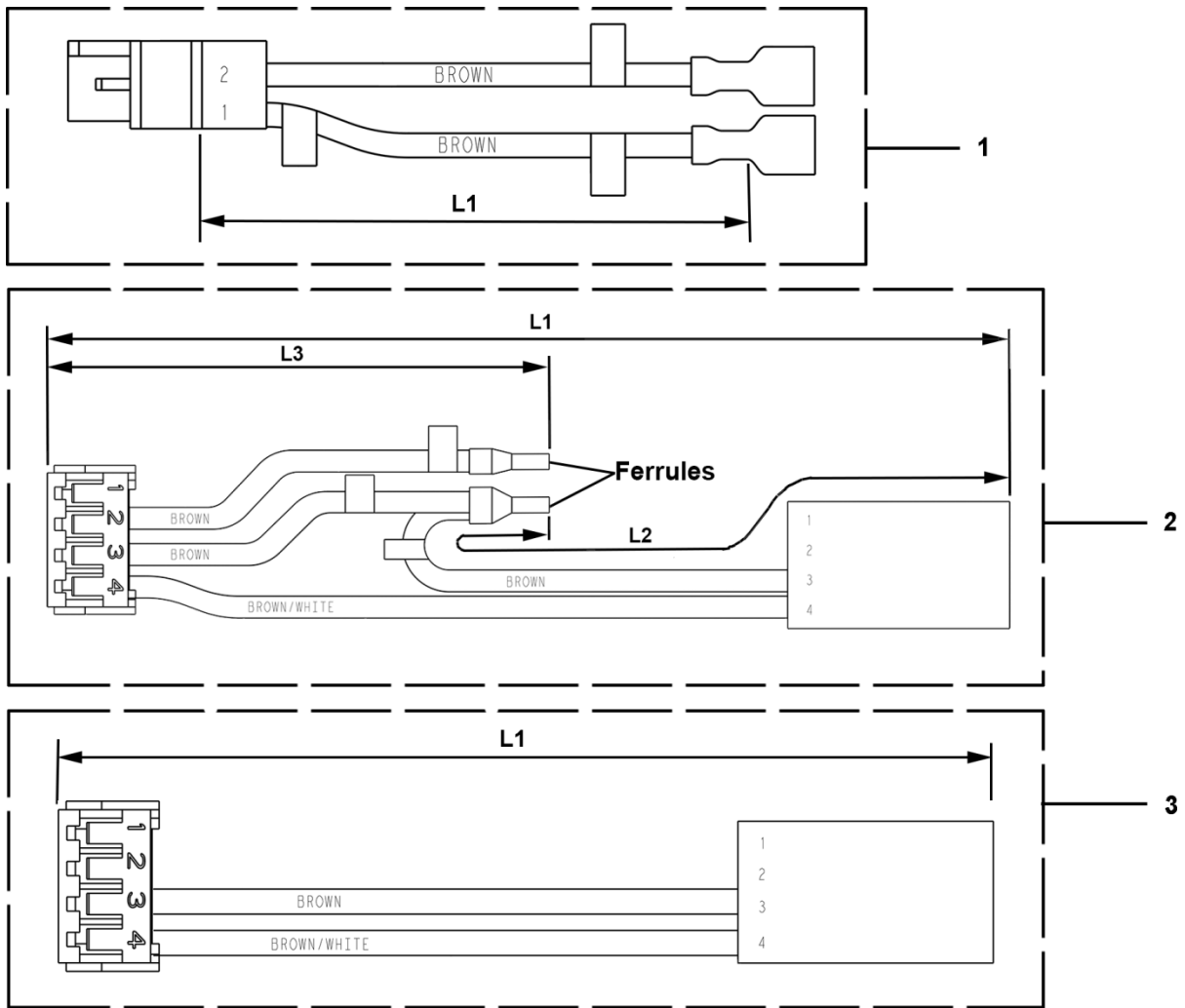
W/O VINTAGE			
REF. No.	PART No.	Application	L1 (mm)
1	AAA25400BT40	Hydro AT400 Front Door Connections, KJ8-10, KJ8-14	152
	AAA25400BT41	Hydro AT400 Front Door Connections, KJ8-9, KJ8-13	152
	AAA25400BT52	Hydro AT400 Rear Door Connections, KJ10-10, KJ10-14	152
	AAA25400BT53	Hydro AT400 Rear Door Connections, KJ10-9, KJ10-13	152
2	AAA25400BT42	Hydro AT400 Front Door Connections	152
	AAA25400BT54	Hydro AT400 Rear Door Connections	152
3	AAA25400BT43	Hydro AT400 Front Door Connections	152
	AAA25400BT55	Hydro AT400 Rear Door Connections	152



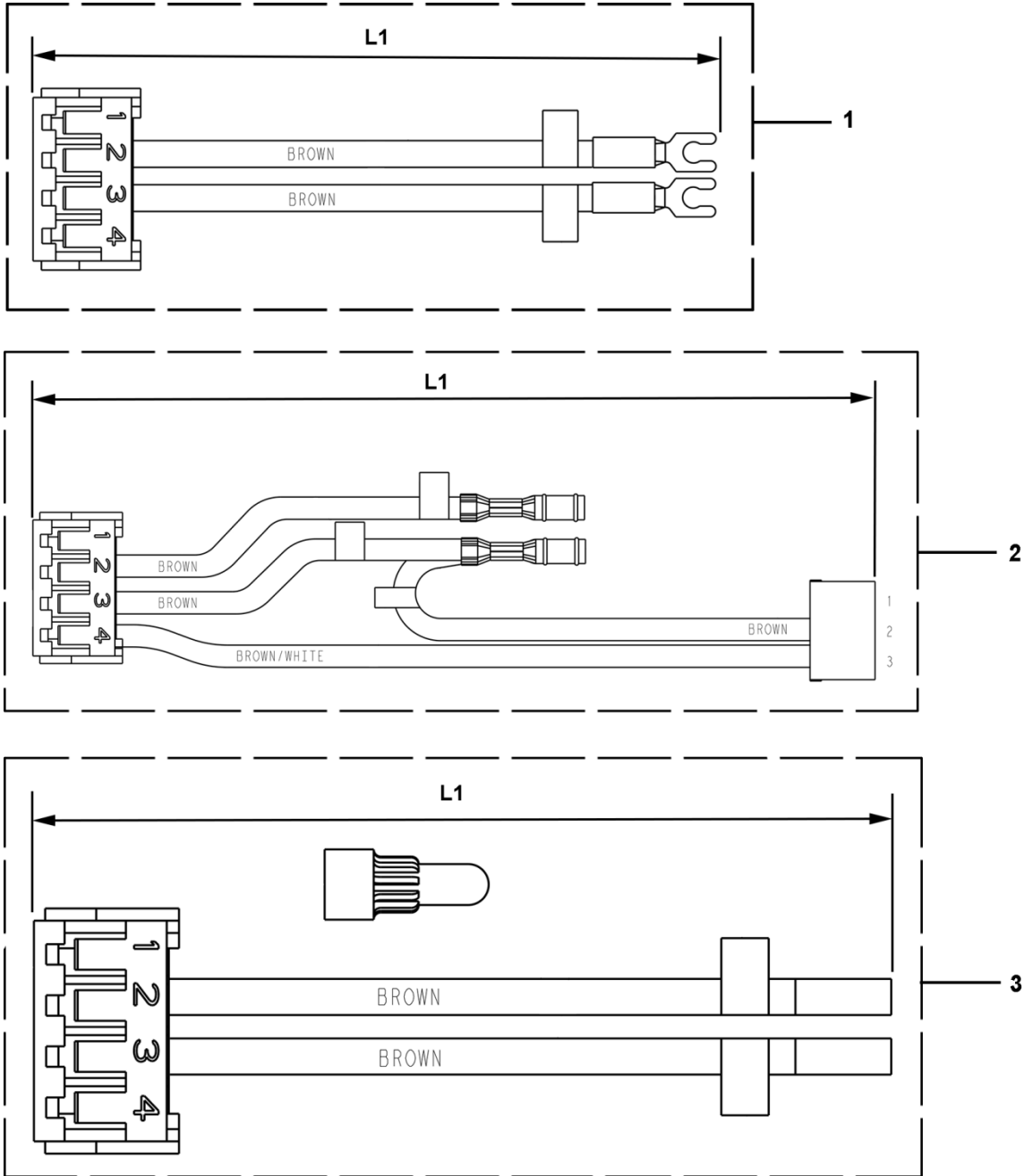
W/O VINTAGE			
REF. No.	PART No.	Application	L1 (mm)
1	AAA25400BT44	Hydro AT400 Front Door Connections	90
	AAA25400BT56	Hydro AT400 Rear Door Connections	90
2	AAA25400BT45	Hydro AT400 Front Door Connections	90
	AAA25400BT57	Hydro AT400 Rear Door Connections	90
3	AAA25400BT58	Hydro AT400 Rear Ground Connections	1500



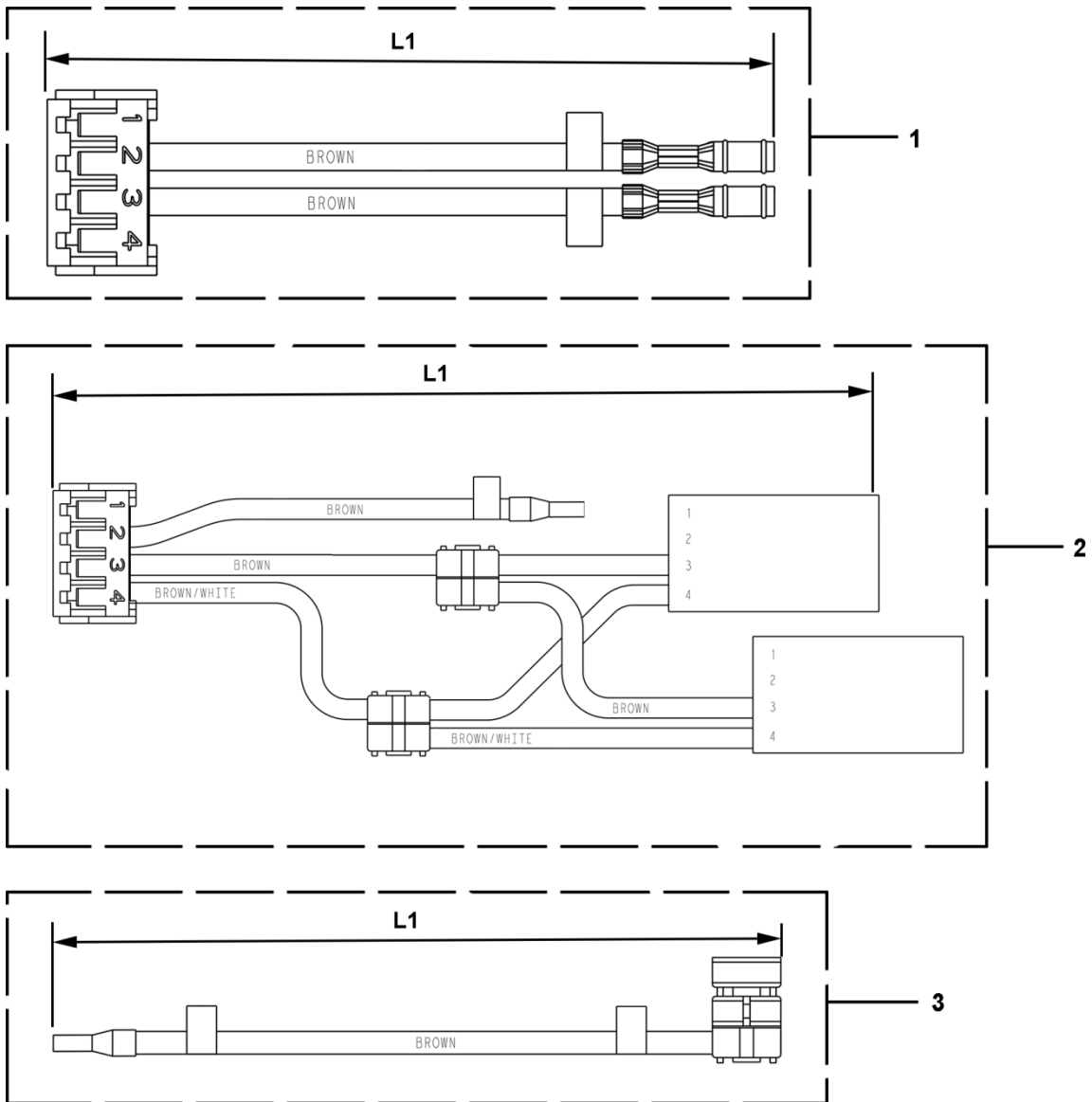
REF. No.	W/O VINTAGE PART No.	Application	L1 (mm)
1	AAA25400BT59	Hydro AT400 Rear Ground Connections	200
	AAA25400BT60	Hydro AT400 Rear Ground Connections	75
	AAA25400BT61	Hydro AT400 Rear Ground Connections, PE1, TB9-10	100
	AAA25400BT62	Hydro AT400 Rear Ground Connections, PE2, KJ10-1	100
	AAA25400BT63	Hydro AT400 Rear Ground Connections	75
2	AAA25400BT64	ESTFF	150
3	AAA25400BT65	CCB FFOP	650



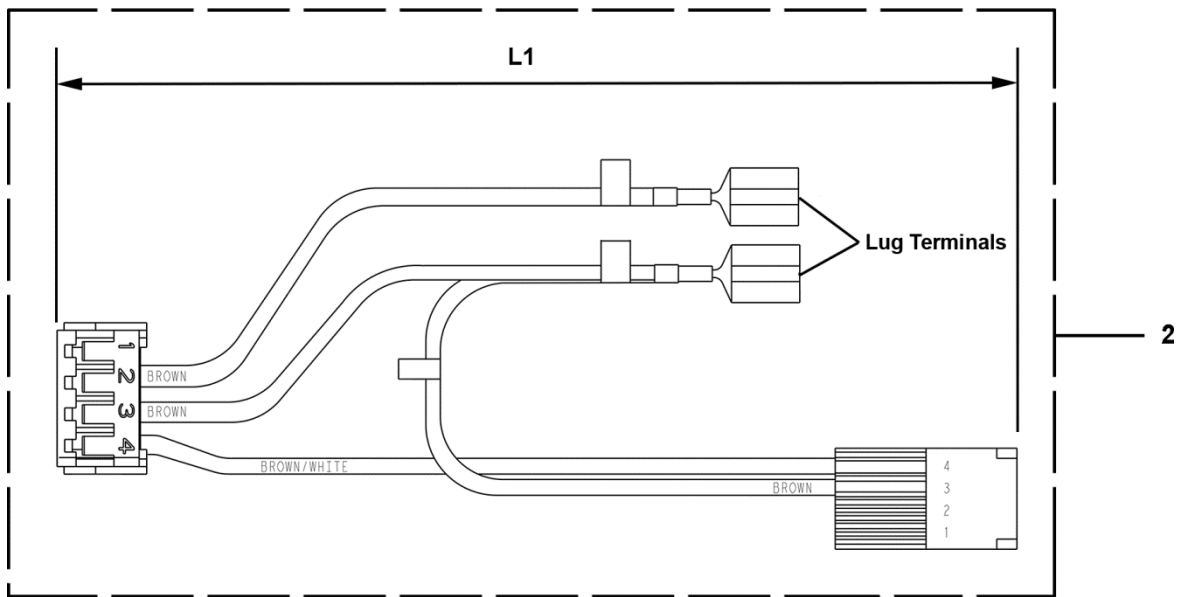
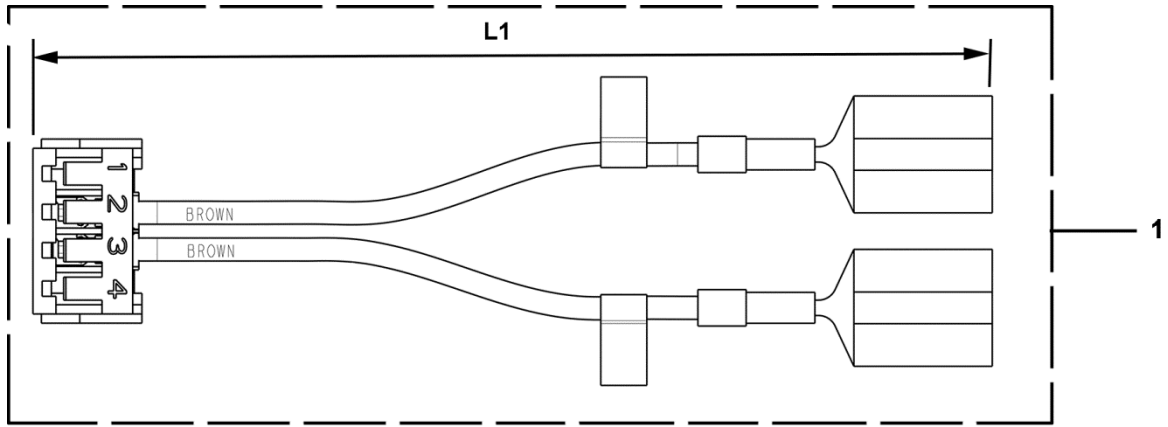
W/O VINTAGE					
REF. No.	PART No.	Application	L1 (mm)	L2 (mm)	L3 (mm)
1	AAA25400BT66	VOS, Speech Board II	1990	---	---
2	AAA25400BT67	ISS + Exit Jewel	900	600	600
	AAA25400BT68	ISS + Exit Jewel w/ SVC	900	1850	1650
	AAA25400BT76	ISS + Seismic Jewel	900	600	600
	AAA25400BT80	ISS + Exit Jewel	2250	1520	1745
3	AAA25400BT69	Exit Jewel	900	---	---
	AAA25400BT77	Seismic Jewel	900	---	---



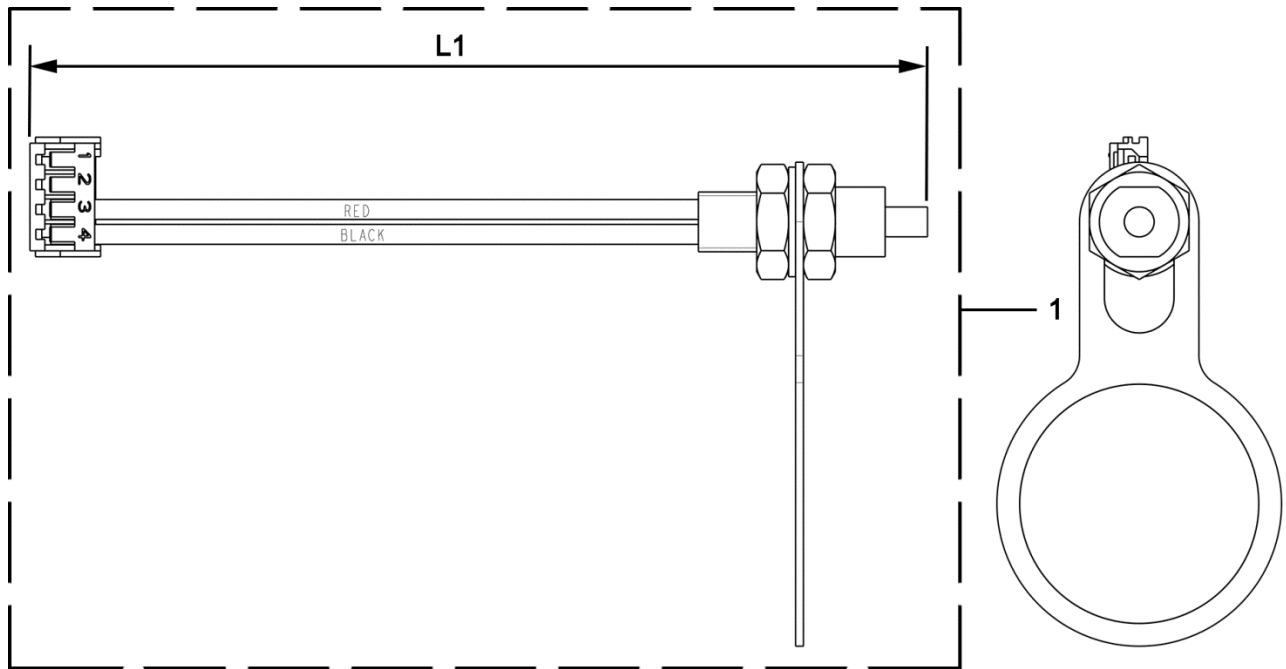
REF. No.	W/O VINTAGE PART No.	Application	L1 (mm)
1	AAA25400BT33	Service Cabinet	1250
2	AAA25400BT17	CEMK	850
3	AAA25400BT50	CCBFF	650



REF. No.	W/O VINTAGE PART No.	Application	L1 (mm)
1	AAA25400BT34	EMT Keyswitch	150
2	AAA25400BT71	Fire Service	660
3	AAA25400BT72	Two Blocking Devices	380



W/O VINTAGE			
REF. No.	PART No.	Application	L1 (mm)
1	AAA25400BT73	Service Cabinet	1400
	AAA25400BT74	Service Cabinet	1250
2	AAA25400BT75	ISS + Exit Jewel w/ SVC	900
	AAA25400BT78	ISS + Seismic Jewel w/ SVC	900



REF. No.	W/O VINTAGE PART No.	Application	L1 (mm)
1	AAA25400BT79	Hall Fixture Emergency Power LED	190