

Cable  
Electrical CAN  
COP and Hall Prewiring

Spare Parts Leaflet

31-AAA25400BV

November 2, 2016 / Page 1 of 12

**W/O  
VINTAGE**



This document does not contain technical data controlled by the EAR or ITAR

SERVICE ENGINEERING

Otis Elevator Company

Bloomfield, Connecticut USA

Unpublished Work—© Otis Elevator Co.; 2016

## Leaflet Description

This leaflet provides spare parts information for COP and hall prewiring cables.

### Leaflet Revisions

Date Revised	Subject Matter Expert	Reason for Revision
November 2, 2016	Joseph Zych	New SPL

### Related Drawings

Drawing No.	Title	Drawing No.	Title
AAA25400BV	Cable Electrical CAN COP and Hall Prewiring		

### Related Documents

Document ID	Title
SPL 32-AAA23852F	<i>Hall Option Fixture with Series 5 Jewel and/or Keyswitch</i>

### Subject Matter Expert

Name	Department
Joseph Zych	OSC Service Engineering

### About Spare Parts Leaflets...

This document lists the lowest replaceable units (LRUs) for the standard version of the product. The LRUs are chosen by a team of Otis associates representing engineering and manufacturing.

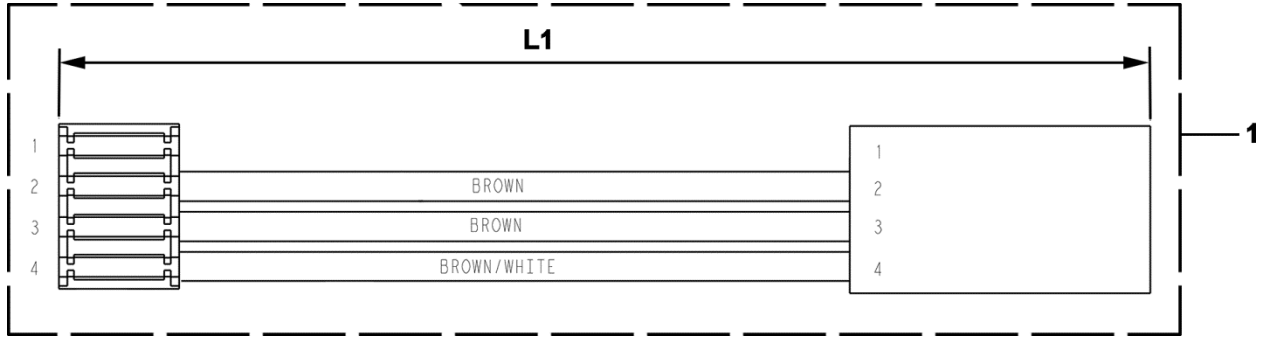
While goal of this document is to make parts identification as easy as possible, the document cannot be all-inclusive. Elevator and escalator contracts classified as "special" or "custom" are not addressed here. For such contracts, please refer to specified information, the contract folder, TIPs, Field Education Articles, Construction Letters, etc. for further information.

If you have any suggestions about this document, please contact the subject matter expert listed on this page.

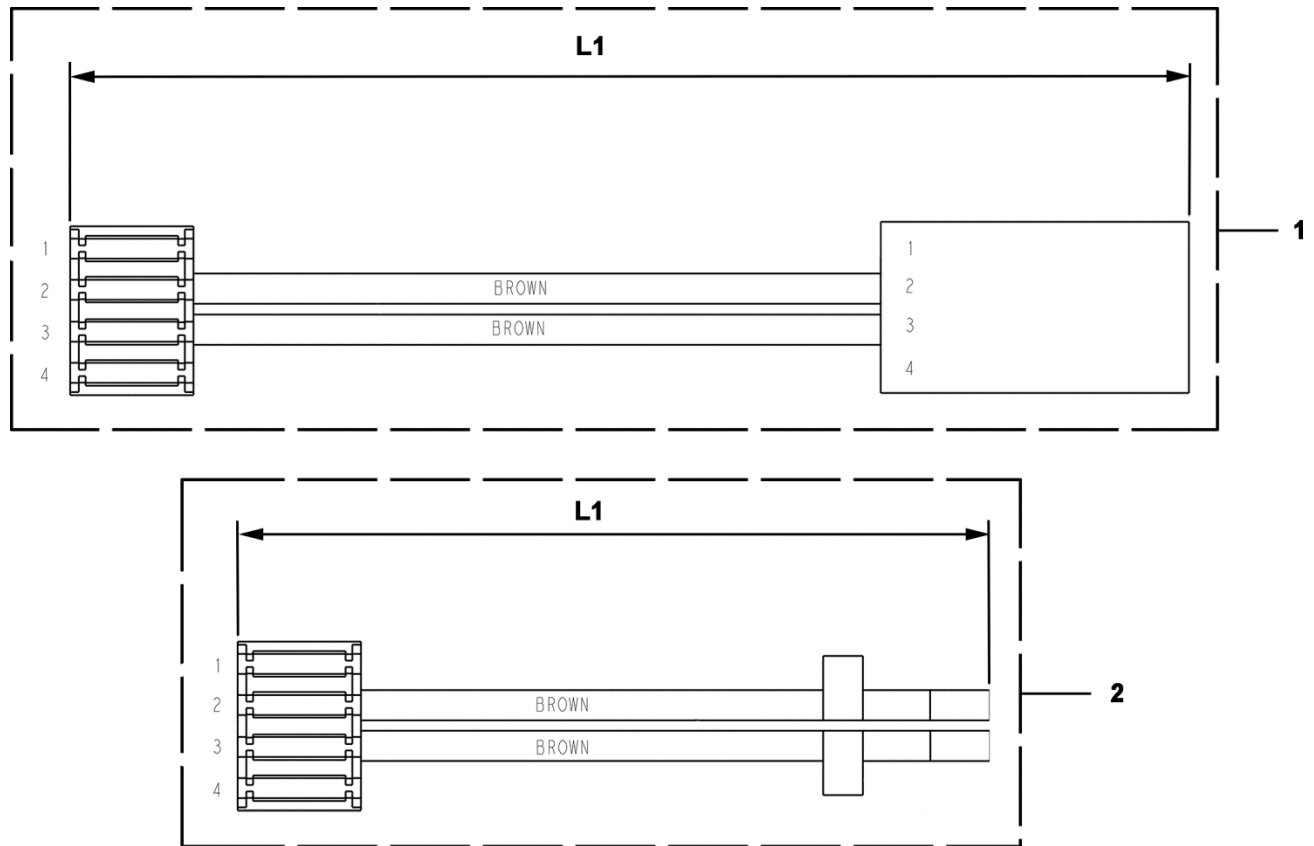
# References for Acronyms

31-AAA25400BV

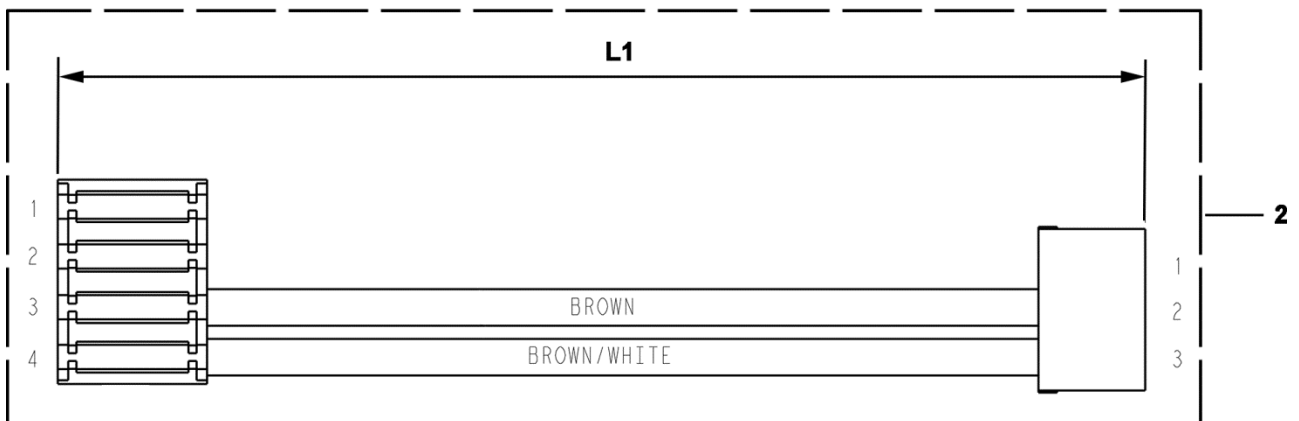
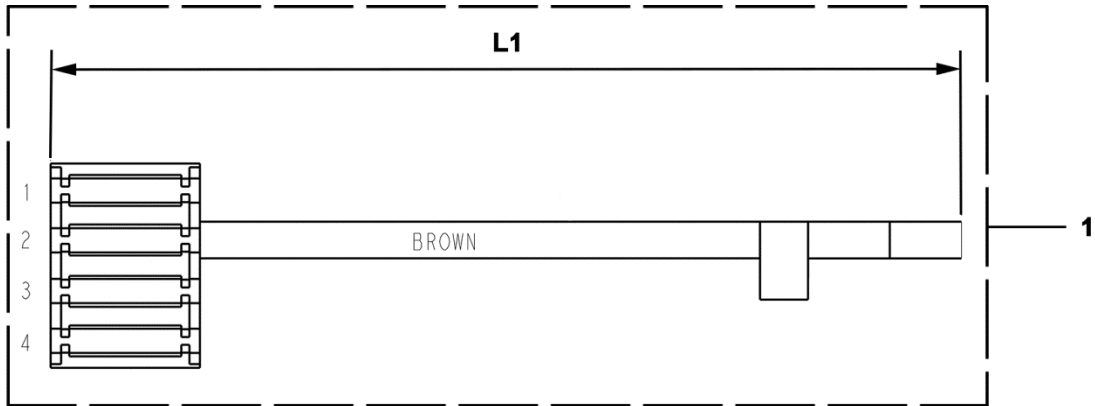
ACRONYMS	DESCRIPTION
CBT	Two Car Operating Panels
CC	Car Call
CCB	Call Cancel Button
CCBFF	Call Cancel Button, Firefighter's Service Panel
CCBFFOP	Call Cancel Button Firefighter's Operation Panel
CEMK	Car Emergency Medical Keyswitch
CEML	Car Emergency Medical Lamp
CEMLX	Car Emergency Medical Lamp (Aux COP)
CSAK	Car Secure Access Keyswitch
CSAL	Car Secured Access Light
CSALX	Car Secondary Access Lighting (Aux COP)
DCB	Door Close Button
DO	Door Open Relay
DRO	Doors, Rear Opening
ECFF	Emergency Communications Failure Fixture
EFK	Emergency Recall Jewel
EHSK	Emergency Hospital Service Keyswitch
EMT	Massachusetts Code, Emergency Medical Tech Operation
EPSE	Express Priority Service
EPSS	Emergency Power Selection Switch
ES2	Emergency Service Phase II w/2-Position Keyswitch
ES3	Emergency Service Phase II w/3-Position Keyswitch
ESTFF	Emergency Stop Switch toggle), Firefighter's Panel
FLKA, B, C, D	Floor Lockout Switch No.
FCL	Full Car Overload Light
FFOP	Firefighter's Operation Panel
LPT	Landing Passing Tone
ISC	Independent Service
ISS	Independent Service Switch
OPT	Door Open Protection Timer
RDCB	Rear Door Close Button
SSA	Secure Access
SVC	Service Cabinet
VOS	Speech Synthesis
XCBT	Without Car Call Button
XDO	MG Start and Door Open Switch
XDRO	Without Rear Opening Doors
XRDCB	Without Rear Door Close Button
XSVC	Without Service Cabinet



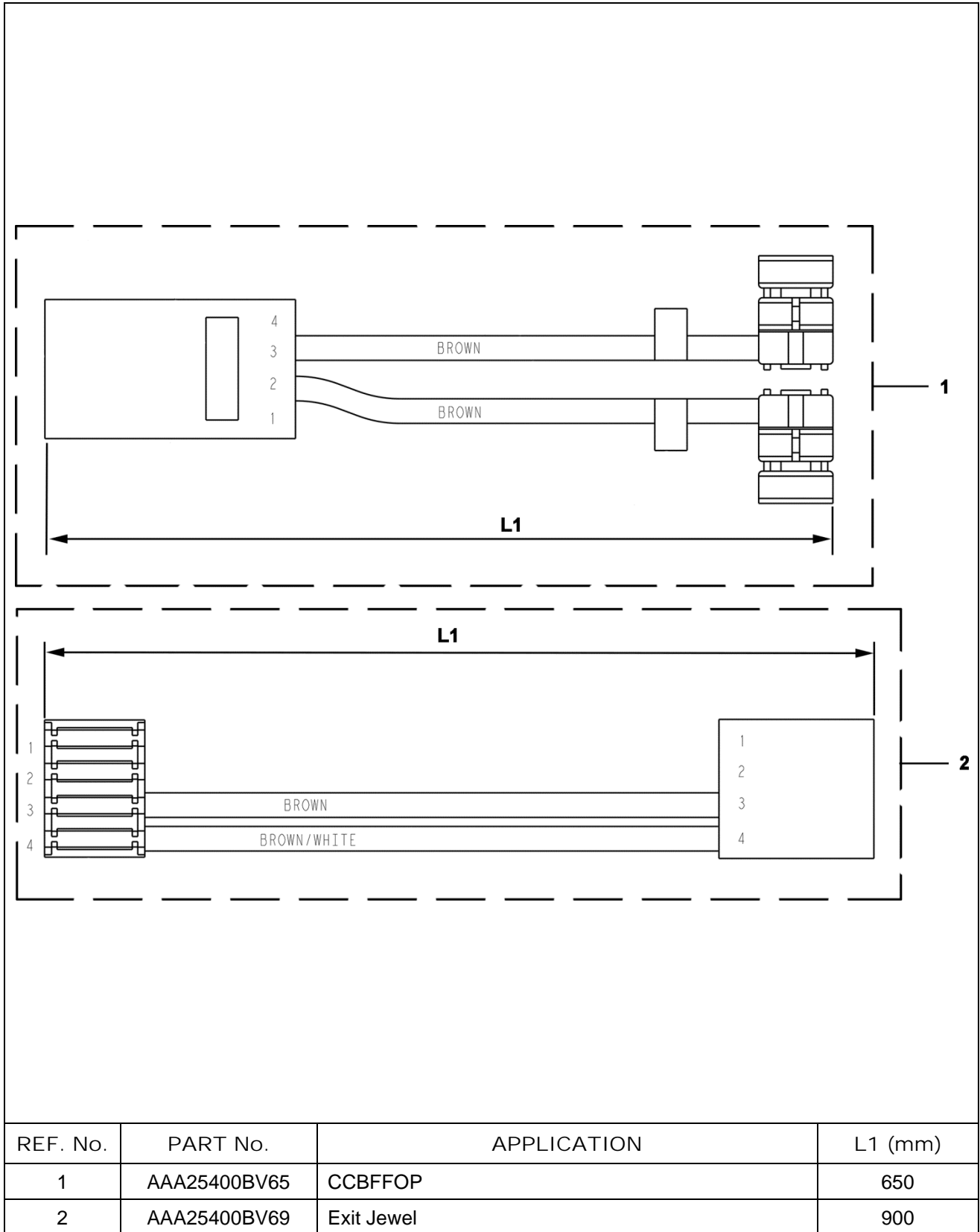
REF. No.	PART No.	APPLICATION	L1 (mm)
1	AAA25400BV1	COP Buttons	420
	AAA25400BV2	COP Buttons Harness Arr. (contract specific)	380
	AAA25400BV9	COP Buttons	340
	AAA25400BV10	COP Buttons Harness Arr. (contract specific)	300
	AAA25400BV11	COP Buttons Harness Arr. (contract specific)	500
	AAA25400BV12	COP Buttons Harness Arr. (contract specific)	460
	AAA25400BV22	COP Buttons	260
	AAA25400BV30	COP Hall Fixture Buttons	175
	AAA25400BV35	COP Buttons	550
	AAA25400BV36	COP Buttons Harness Arrangement (contract specific)	700

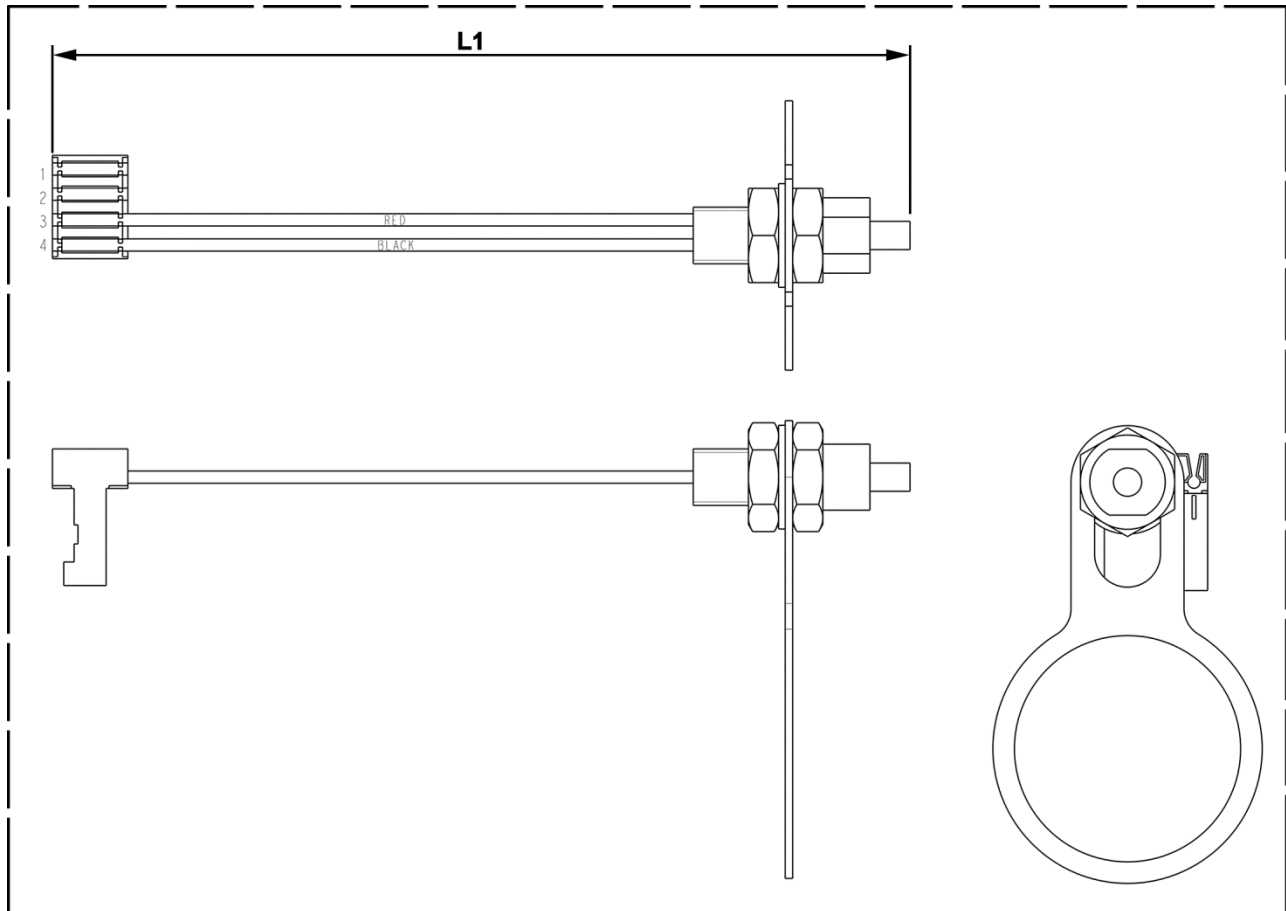


REF. No.	PART No.	APPLICATION	L1 (mm)
1	AAA25400BV4	RDCB	510
	AAA25400BV8	CCBFF, w/o Firefighter's Cabinet	650
	AAA25400BV37	DCB, RDCB	860
2	AAA25400BV13	ISS	610
	AAA25400BV14	FLKC	850
	AAA25400BV15	FLKD	850
	AAA25400BV16	EHSK	850
	AAA25400BV29	Hall Fixture Floor Cutout	150
	AAA25400BV33	Service Cabinet	850
	AAA25400BV34	EMT Keyswitch	150
	AAA25400BV50	CCBFF, w/ Firefighter's Cabinet	650
	AAA25400BV70	FFOP Only Door Close	585



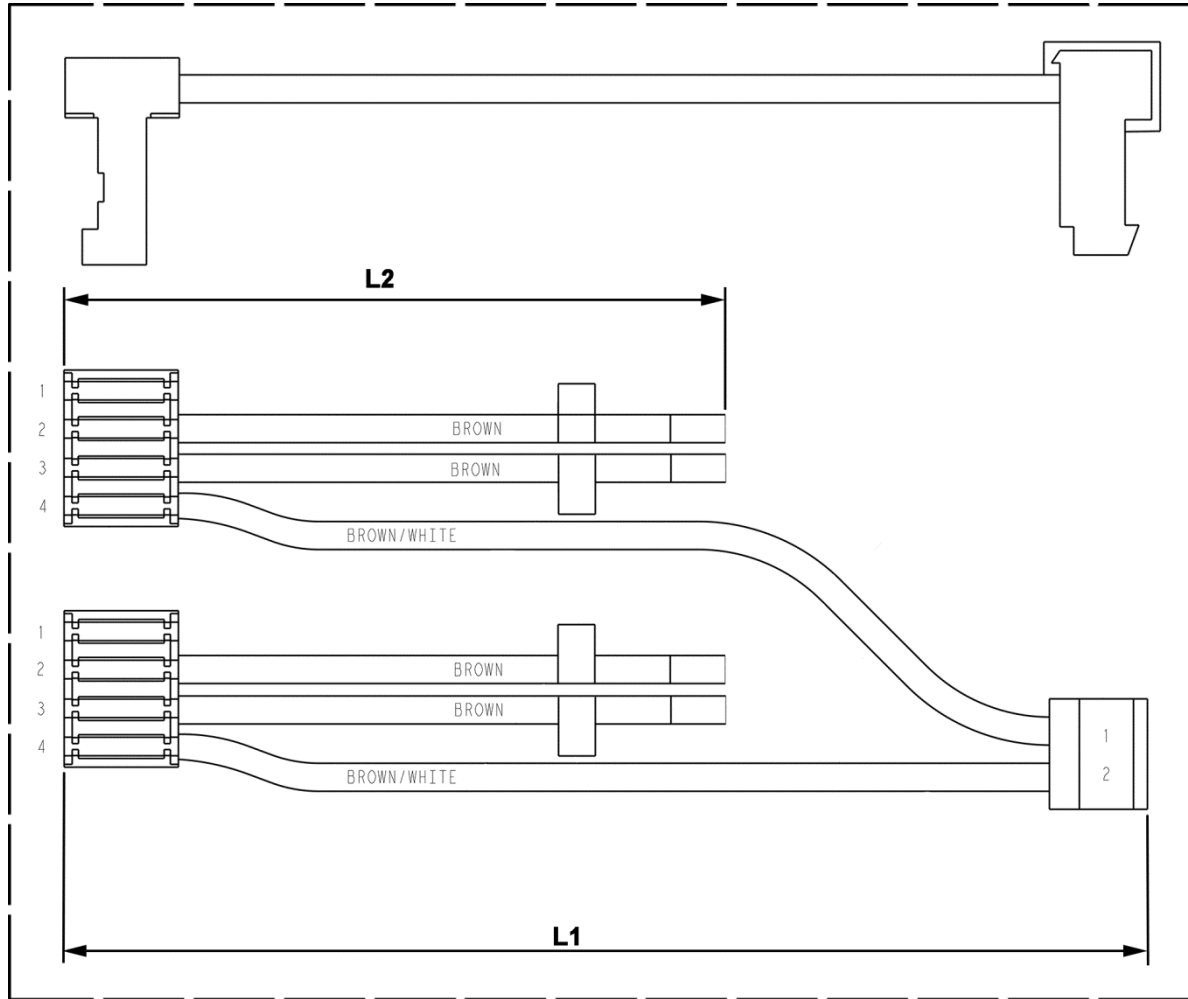
REF. No.	PART No.	APPLICATION	L1 (mm)
1	AAA25400BV19	CSAK	850
2	AAA25400BV21	Hall Fixture Jewel	125
	AAA25400BV31	Hall Fixture OPT Jewels	190



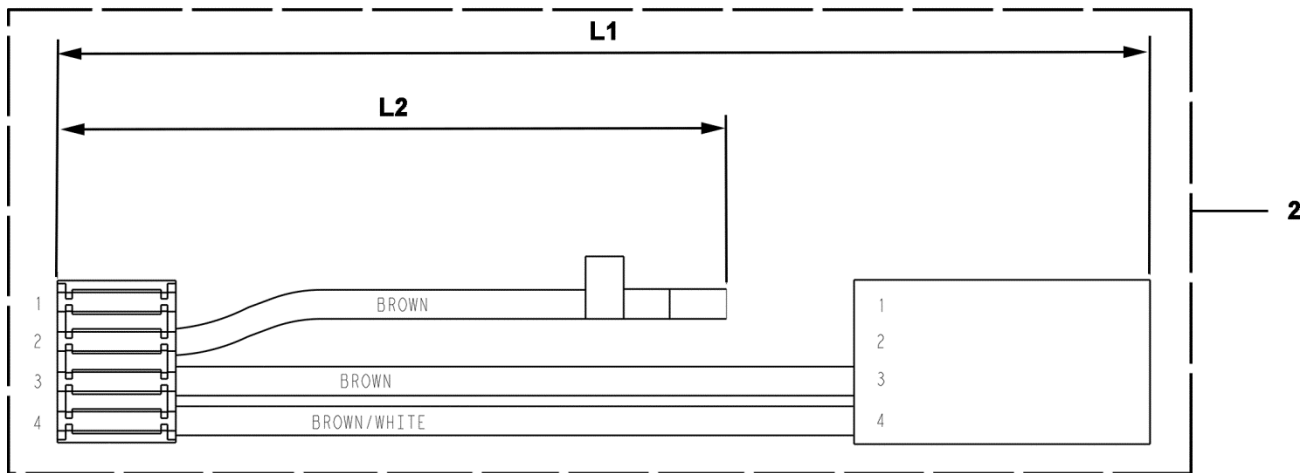
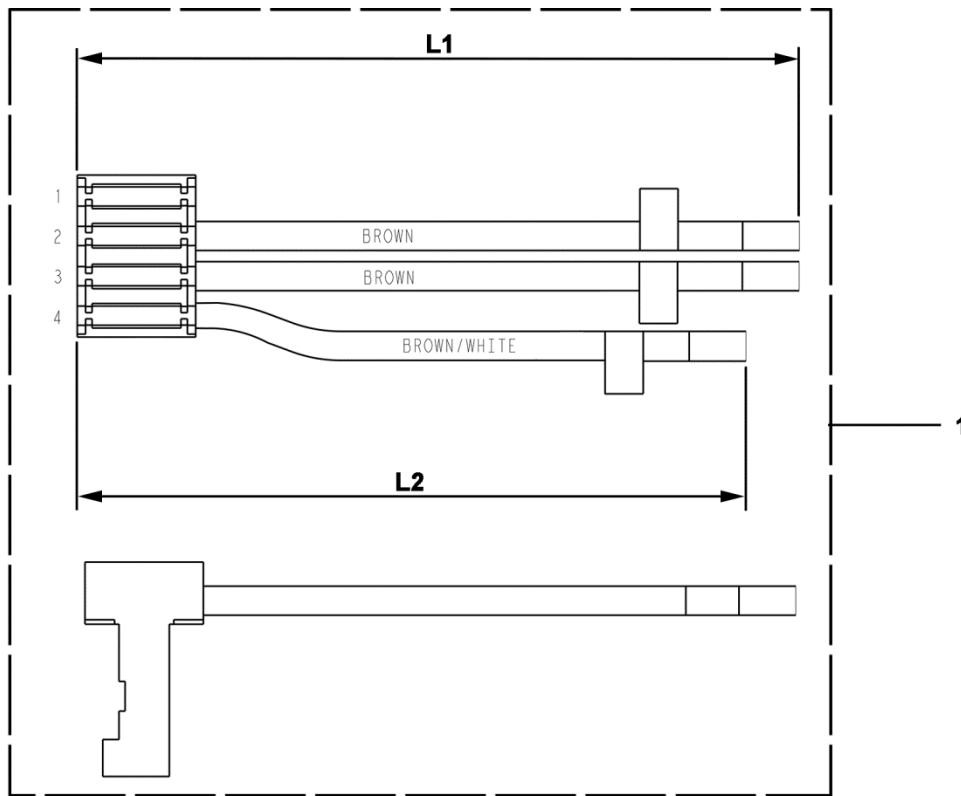


REF. No.	PART No.	APPLICATION	L1 (mm)
1	AAA25400BV79	Hall Fixture Emergency Power, LED	190

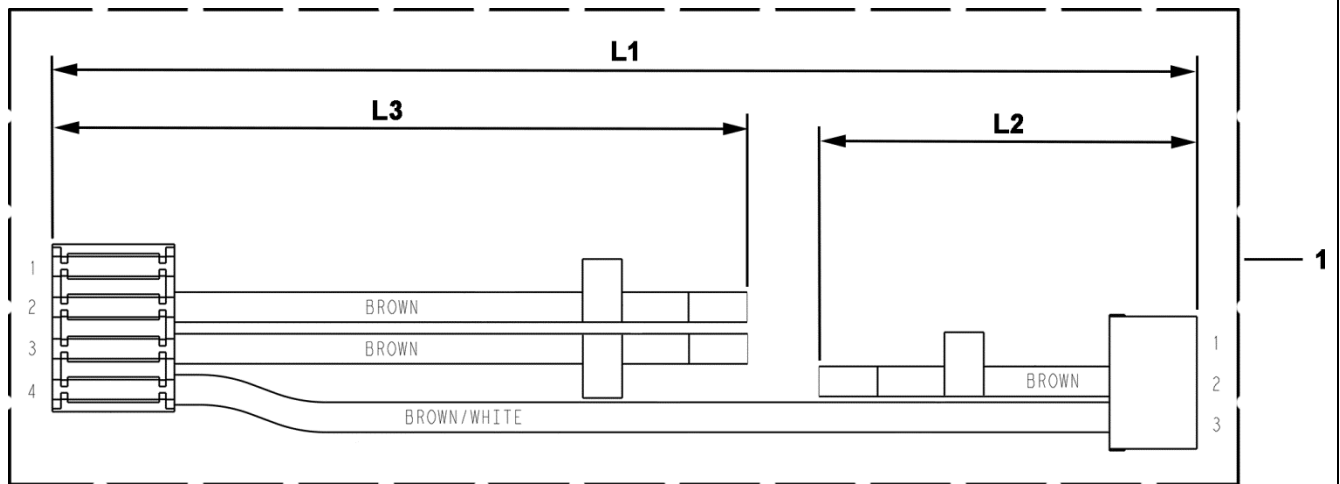




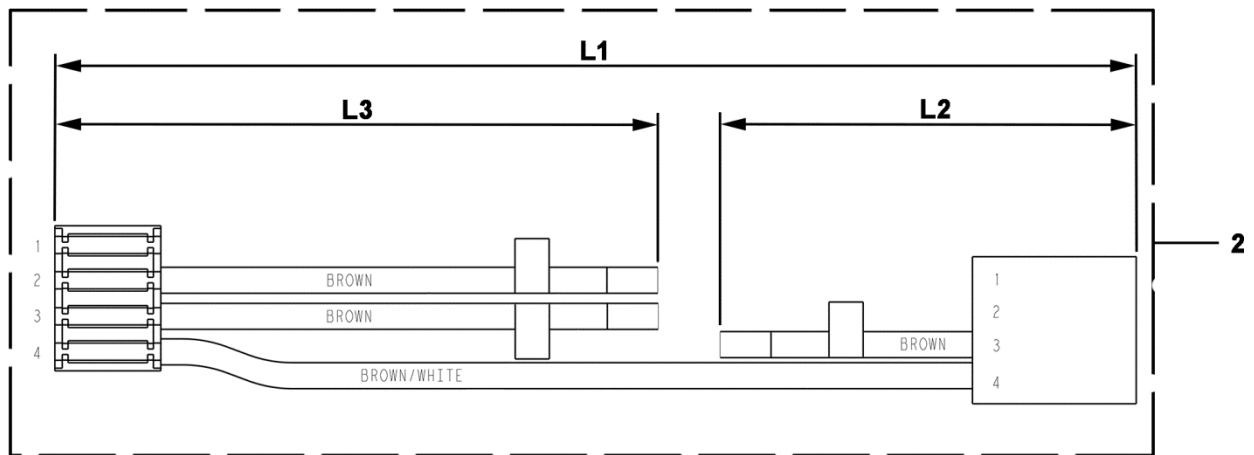
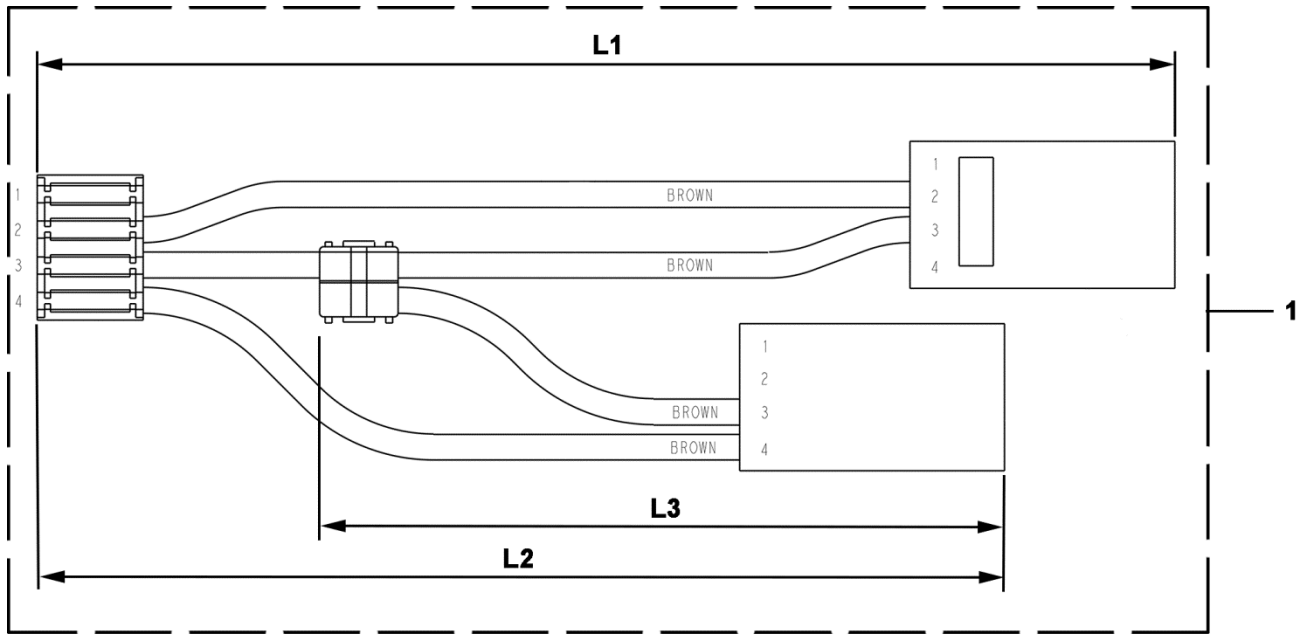
REF. No.	PART No.	APPLICATION	L1 (mm)	L2 (mm)
1	AAA25400BV3	FLKA, FLKB, LPT, FCL	1650	750



REF. No.	PART No.	APPLICATION	L1 (mm)	L2 (mm)
1	AAA25400BV5	EFK, Buzzer	635	815
	AAA25400BV23	Hall Fixture Options ECFF	275	50
	AAA25400BV28	Hall Fixture Options ECFF	150	50
2	AAA25400BV7	EFK, Fire Hat Jewel	660	585



REF. No.	PART No.	APPLICATION	L1 (mm)	L2 (mm)	L3 (mm)
1	AAA25400BV17	CEMK	850	1150	850
	AAA25400BV18	CSAK	850	1150	850
	AAA25400BV25	Hall Fixture Options EPSE	200	100	150
	AAA25400BV26		75	100	150
	AAA25400BV27		175	175	100



REF. No.	PART No.	APPLICATION	L1 (mm)	L2 (mm)	L3 (mm)
1	AAA25400BV38	DCB	860	350	300
2	AAA25400BV67	ISS + Exit Jewel	900	600	600
	AAA25400BV68	ISS + Exit Jewel	900	1850	1650