

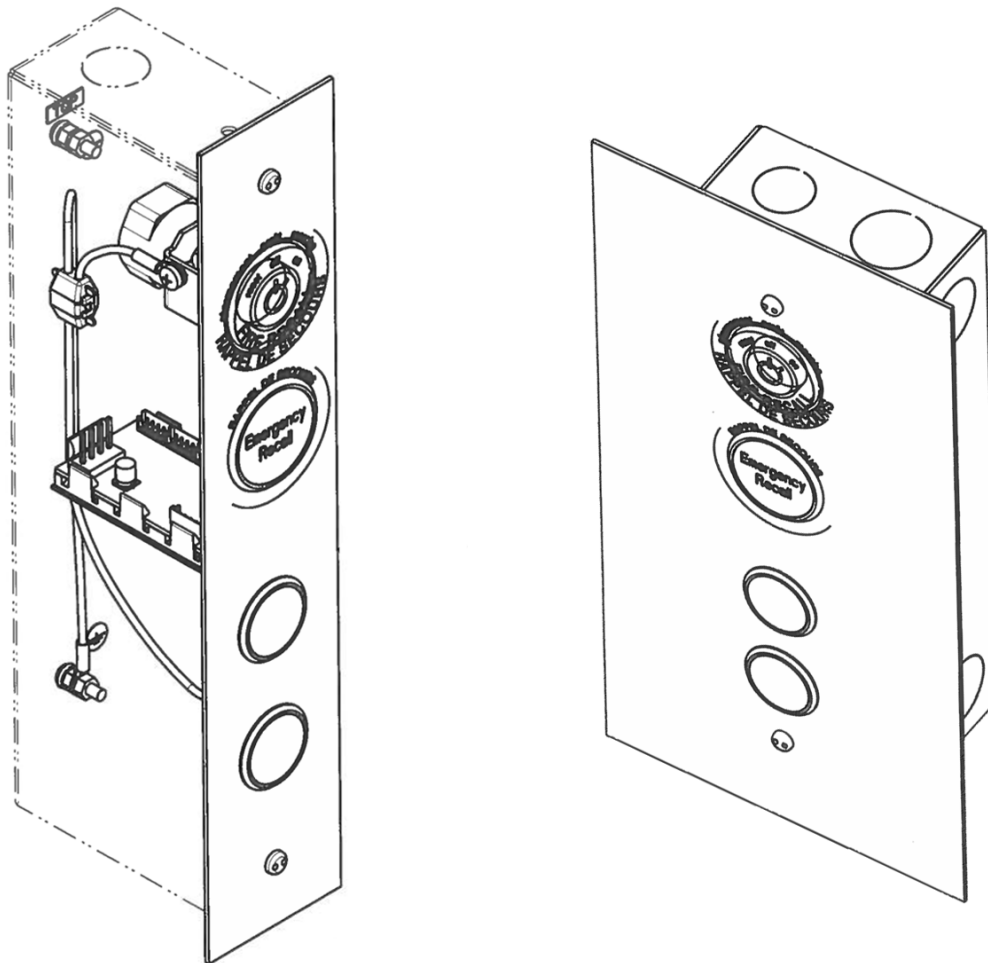
Landing Fixture

Spare Parts Leaflet

32-AAA23852C

May 8, 2024 / Page 1 of 9

32 H - AAA23852C



OTIS

This document contains technical data
subject to EAR, ECCN=EAR99

SERVICE ENGINEERING
Otis Elevator Company
Bloomfield, Connecticut USA

Unpublished Work—© Otis Elevator Co.; 2024

History

32-AAA23852C

Leaflet Description

This spare parts leaflet lists the lowest replaceable units for two types of AAA23852C landing fixtures: terminal and intermediate. Each of them has In-Jamb and In-Wall mounting version. Fixtures are available with Remote Serial Link (RSL) as well as Controller Aria Network (CAN) communication PCBs.

Leaflet Revisions

Date Revised	Subject Matter Expert	Reason for Revision
<i>See Next Page for Revision History</i>		

Related Drawings

Drawing No.	Title	Drawing No.	Title
AAA23852C	Landing Fixture	---	---

Related Documents

Document ID	Title
SPL 32-AAA147TJ	Hall Station Faceplate Assembly
SPL 31-AAA23851B	Fixture: Jewel Assembly
SPL 32-AAA23851A	Keyswitch Series 5
SPL 31-AAA102VB	Plate, Instructions
SPL 32-AAA23500CH	Pushbutton, Luxury Micro-Motion III
SPL 32-AAA23500AM	Luxury Micro-Motion III Pushbuttons (Vandal-Resistant)

Subject Matter Expert

Name	Department
Vadzim Fedarenka	OSC Service Engineering

About Spare Parts Leaflets...

This document lists the lowest replaceable units (LRUs) for the standard version of the product. The LRUs are chosen by a team of Otis associates representing engineering and manufacturing.

While goal of this document is to make parts identification as easy as possible, the document cannot be all-inclusive. Elevator and escalator contracts classified as "special" or "custom" are not addressed here. For such contracts, please refer to specified information, the contract folder, TIPs, Field Education Articles, Construction Letters, etc. for further information.

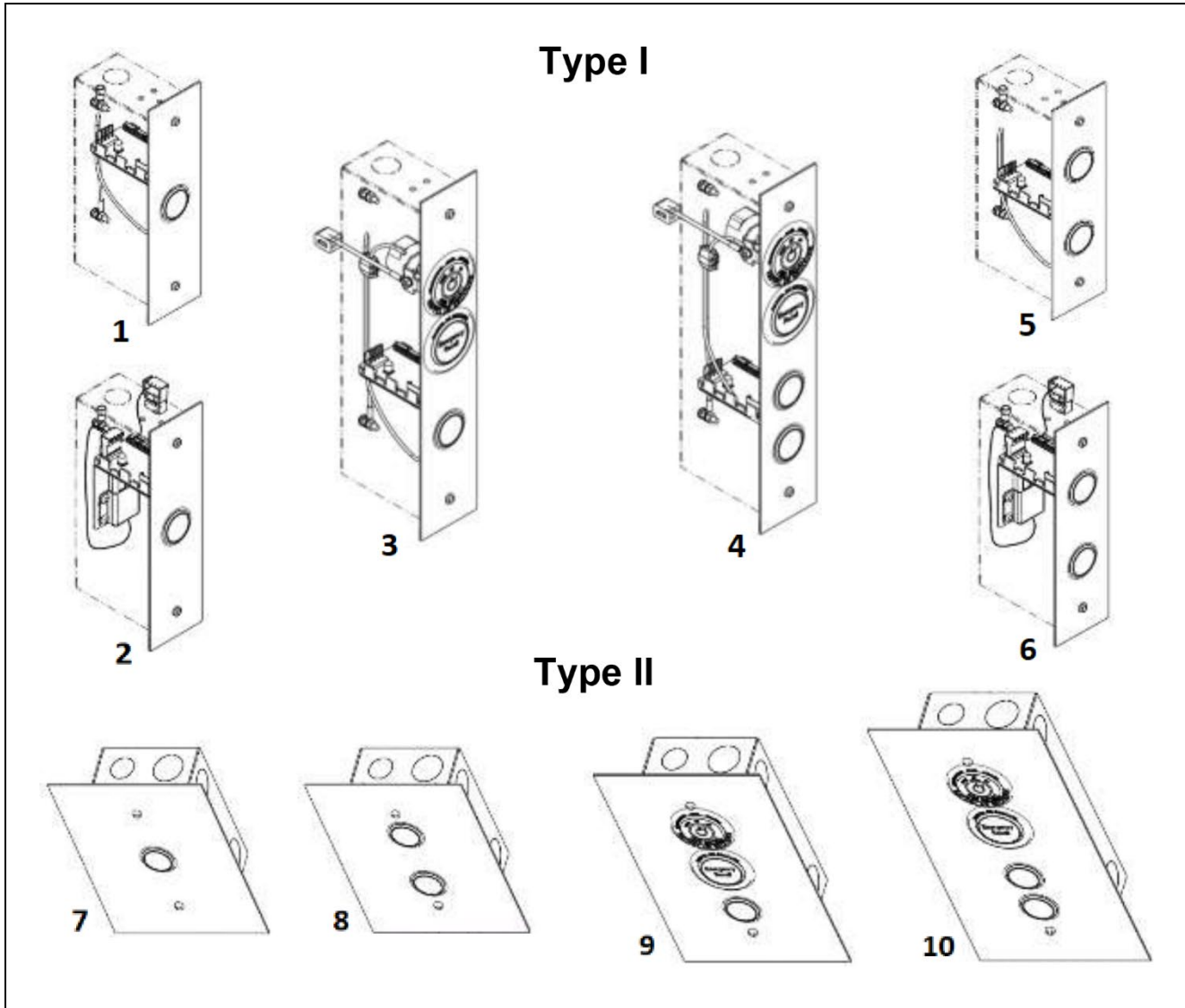
If you have any suggestions about this document, please contact the subject matter expert listed on this page.

History (continued)

32-AAA23852C

Leaflet Revisions

Date Revised	Subject Matter Expert	Reason for Revision
November 28, 2012	Joseph Zych	New SPL
January 15, 2014	Joseph Zych	Corrected callouts on p. 7
June 18, 2014	Joseph Zych	Updated document template, Corrected parts on pp. 6 and 8
July 8, 2015	Joseph Zych	Corrected reference numbers in the illustration on p. 5
May 3, 2017	Paul Kerr	Updated Ref.6 on p. 5 and Ref. 6 on p. 7
April 11, 2018	Joseph Zych	Corrected the reference to SPL 32-AAA147TJ on pp. 5 & 7
July 3, 2019	Joseph Zych	Added cables AAA174YL8 and AAA174HS9
July 31, 2019	Joseph Zych	Corrected references on p. 8
March 30, 2022	Vadzim Fedarenka	<ul style="list-style-type: none">• Updated leaflet description and SME• Added new p. 3• Updated Ref. 9 on p. 4 and Ref.1 on p. 7• Updated ABA174SH8 & SH9 description on pp. 4 & 7• Corrected ABA174SH cables p/ns from SH08 & 09• Corrected description for AAA72JZ1 on pp. 5 & 7• Added new p. 8• Added ABA174SH8 & ABA174SH9 on p. 6
April 6, 2022	Vadzim Fedarenka	Corrected history page
May 8, 2024	Vadzim Fedarenka	Added related documents & AAA25400BT111 cable on p. 8.

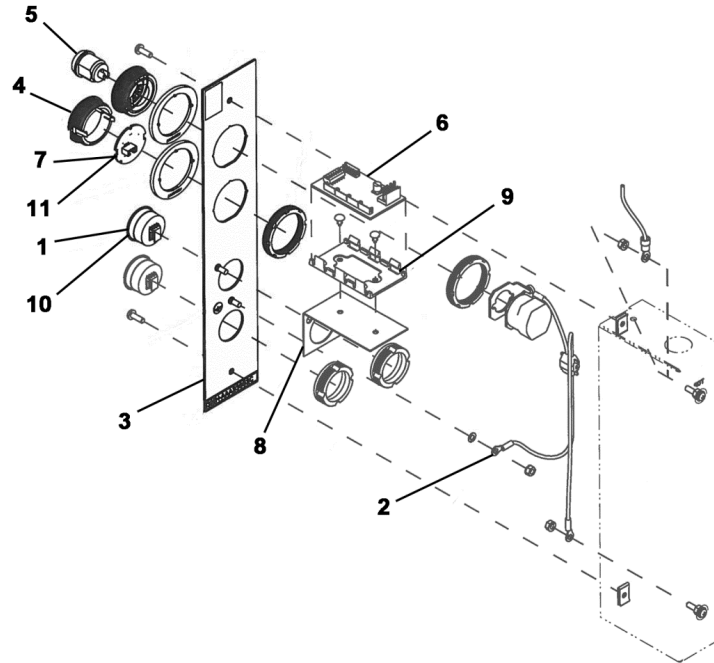


REF. No.	DESCRIPTION
1	Terminal Landing, In-Jamb Mounting
2	Terminal Landing for eCALL Option Only, In-Jamb Mounting
3	Terminal Landing with SES, In-Jamb Mounting
4	Intermediate Landing with SES, In-Jamb Mounting
5	Intermediate Landing, In-Jamb Mounting
6	Intermediate Landing for eCALL Option Only, In-Jamb Mounting
7	Terminal Landing, In-Wall Mounting
8	Intermediate Landing, In-Wall Mounting
9	Terminal Landing with SES, In-Wall Mounting
10	Intermediate Landing with SES, In-Wall Mounting

NOTE: To replace an entire assembly, review your records and contact Customer Service with your machine number. Specific contract order will be created.

Type I Landing Fixture Components

32-AAA23852C

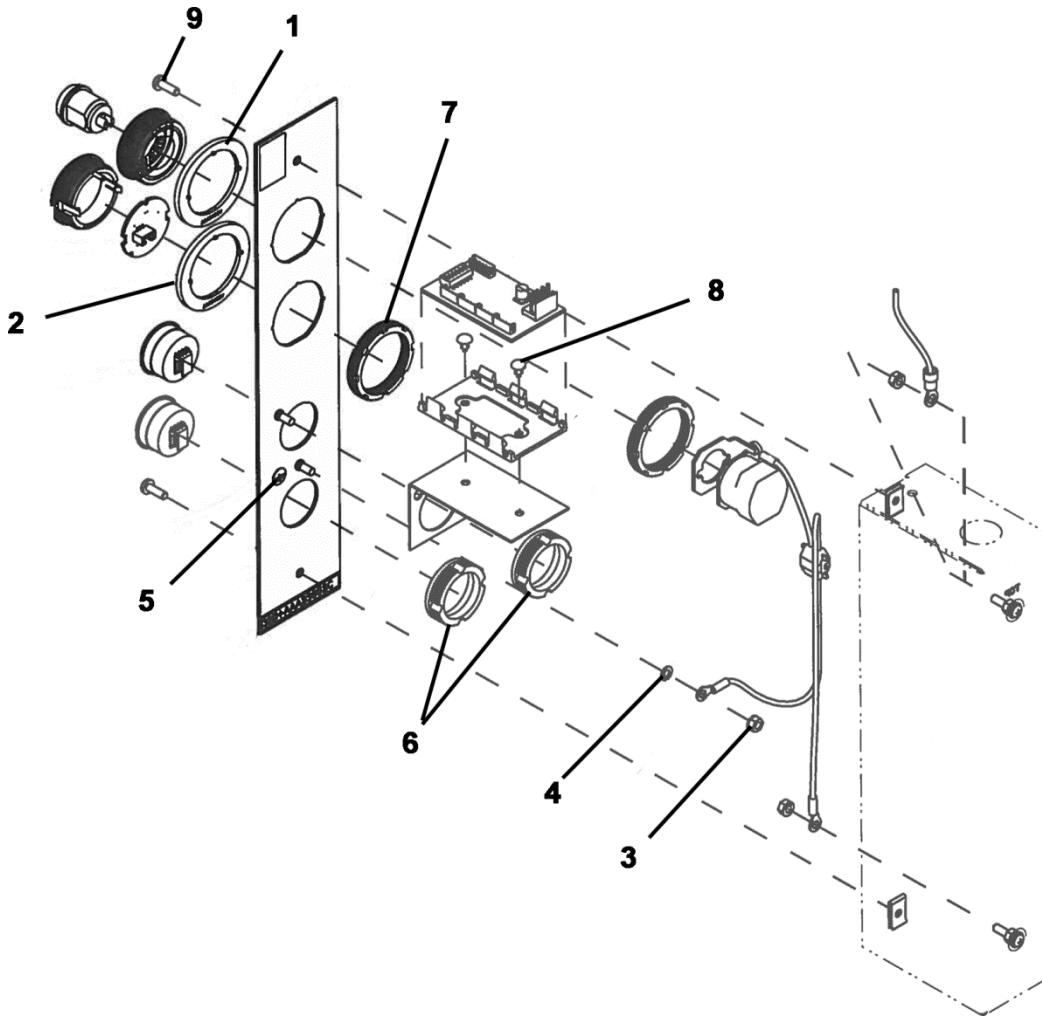


AAA23852C		
REF. No.	PART No.	DESCRIPTION
1	---	Assembly, Button, Standard Hall, Type AAA23500CH. See SPL 32-AAA23500CH
	---	Assembly, Button, Vandal Resistant Hall, Type AAA23500AM. See SPL 32-AAA23500AM
2	AAA175ABY1	Assembly, Conductor, Ground Wire, 25 mm Long
	AAA175ABY16	Assembly, Conductor, Ground Wire, 410 mm Long
3	---	Assembly, Faceplate, Type AAA147TJ, See SPL 32-AAA147TJ
4	---	Assembly, Jewel, Type AAA23851B, See SPL 31-AAA23851B
5	---	Assembly, Keyswitch SES, Type AAA23851A. See SPL 32-AAA23851A
6	DAA26800AL1 DCA26800AL1	Assembly, PC Board, RS14 (RSL)
	DAA26800Q1	Assembly, PC Board, CF14 (CAN)
7	AAA26800AJS4	Assembly, PC Board, SES Phase I Jewel
8	AAA316HZD1	Bracket, In-Jamb Button
	AAA316HZD4	Bracket, In-Wall Jewel
	AAA316HZD5	Bracket, In-Wall Button
9	FBA316SL1 FBA316SL2	Bracket, Holder, RS14 (RSL) or CF14 (CAN)
10	AAA25400BT30	Cable, Electrical, Button to RSL Board
	AAA25400BV30	Cable, Electrical, Button to CAN Board
11	AAA25400BT21	Cable, Electrical, Jewel to RSL Board
	AAA25400BV21	Cable, Electrical, Jewel to CAN Board
*	ABA174SH8	Cable, Electrical, Hall Fixture, w/ 4-Pin IDC Connector, CAN, for DAA26800Q1 Connection
*	ABA174SH9	Cable, Electrical, Hall Fixture, w/ RS14 Connector for DCA26800AL1 Connection

(Continued on Next Page)

Type I Landing Fixture Components

32-AAA23852C

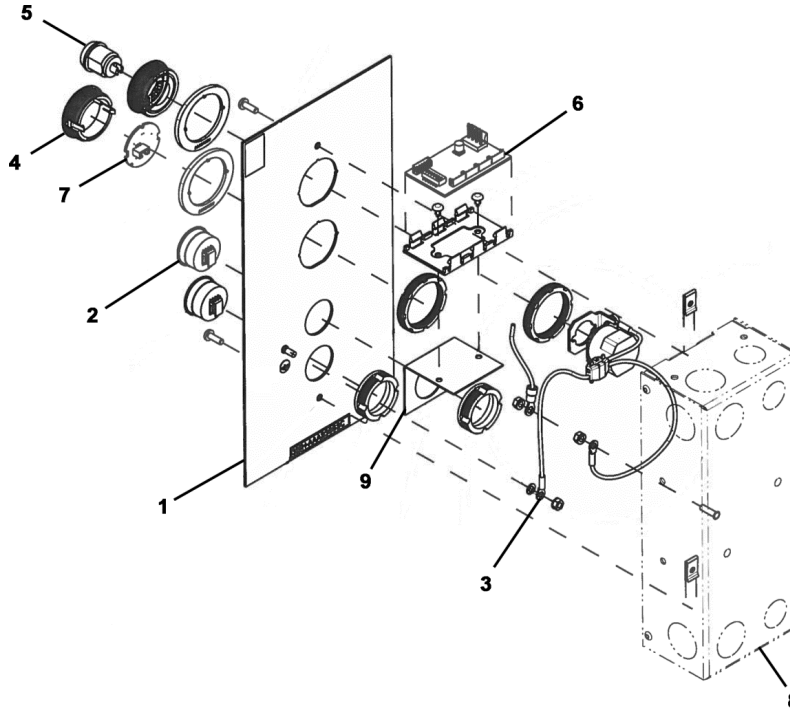


AAA23852C		
REF. No.	PART No.	DESCRIPTION
1	AAA340CV9	Collar, Keyswitch, Fire Recall, English or French Option
2	AAA340CV7	Collar, Jewel, Fire Recall, English or French Option
3	NON7203M3-8-Z	Hardware, M3 Hex Locknut, w/ Lock Washer, Ground Studs
4	DIN6797A-M4-350HV-Z	Hardware, M4 External Tooth Lock Washer, Face Plate Ground Stud
5	AAA102ABK1	Label, Earth Ground
6	FAA72N1	Nut, Button
7	AAA72JZ1	Nut, Jewel and Keyswitch
*	---	Plate, Data, Type AAA102VB. See SPL 31-AAA102VB
8	AAA141AN1	Rivet, Snap, Mounting, RS14 (RSL) or CF14 (CAN)
9	AAA124HE5	Screw, Tamper-Resistant, M4x20, FS4/SSB Brushed Stainless
	AAA124HE6	Screw, Tamper-Resistant, M4x20, GOLDB Brushed Brass
	AAA124HE7	Screw, Tamper-Resistant, M4x20, SSM Mirror Stainless
	AAA124HE8	Screw, Tamper-Resistant, M4x20, GOLDB Mirror Brass
	AAA124HE10	Screw, Tamper-Resistant, M4x20, BT Bronze Tinted

* Part not shown.

Type II Landing Fixture Components

32-AAA23852C



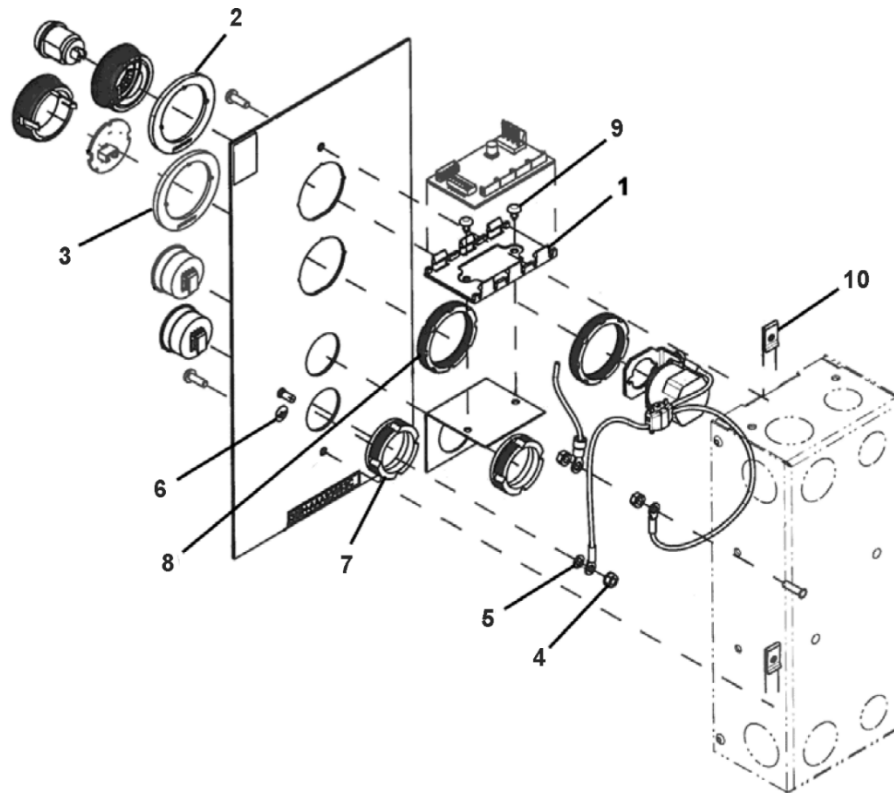
AAA23852C		
REF. No.	PART No.	DESCRIPTION
1	---	Assembly, Faceplate, Type AAA147TJ, See SPL 32-AAA147TJ
2	---	Assembly, Button, Standard Hall, Type AAA23500CH. See SPL 32-AAA23500CH
	---	Assembly, Button, Vandal Resistant Hall, Type AAA23500AM. See SPL 32-AAA23500AM
3	AAA175ABY1	Assembly, Conductor, Ground Wire, 250 mm Long
	AAA175ABY16	Assembly, Conductor, Ground Wire, 410 mm Long
4	---	Assembly, Jewel, Type AAA23851B, See 31-AAA23851B
5	---	Assembly, Keyswitch SES, Type AAA23851A, See SPL 32-AAA23851A
6	DAA26800AL1 DCA26800AL1	Assembly, PC Board, RS14 (RSL)
	DAA26800Q1	Assembly, PC Board, CF14 (CAN)
7	AAA26800AJS4	Assembly, PC Board, SES Phase I Jewel
8	AAA309EC1	Box, Junction, 142 mm Long
	AAA309EC2	Box, Junction, 188 mm Long
	AAA309EC3	Box, Junction, 238 mm Long
9	AAA316HZD1	Bracket, In-Jamb Button
	AAA316HZD4	Bracket, In-Wall Jewel
	AAA316HZD5	Bracket, In-Wall Button
*	ABA174SH8	Cable, Electrical, Hall Fixture, w/ 4-Pin IDC Connector, CAN, for DAA26800Q1 Connection
*	ABA174SH9	Cable, Electrical, Hall Fixture, w/ RS14 Connector for DCA26800AL1 Connection

* Part not shown

(Continued on Next Page)

Type II Landing Fixture Components

32-AAA23852C

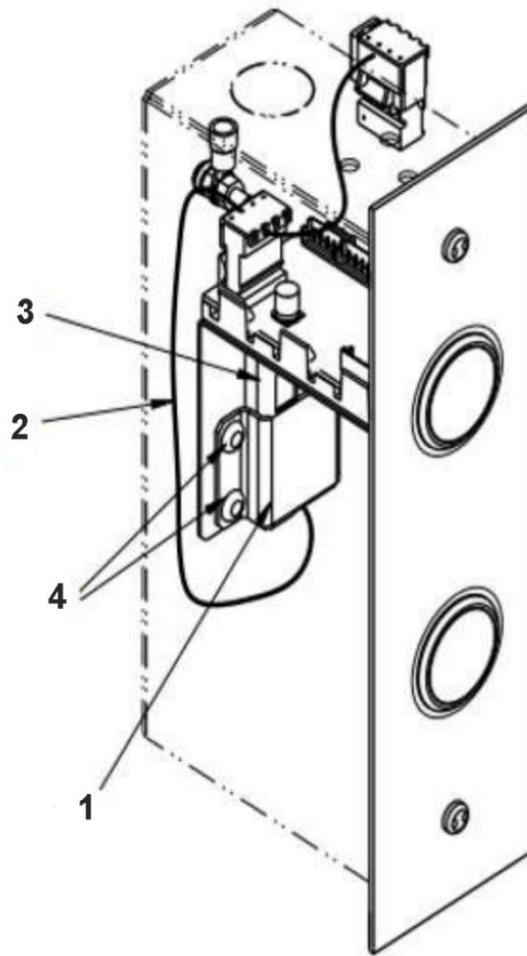


REF. No.	AAA23852C PART No.	DESCRIPTION
1	FBA316SL4 FBA316SL2	Bracket, Holder, RS14 (RSL) + CF14 (CAN)
*	AAA25400BT30	Cable, Electrical, Button to RSL Board
	AAA25400BV30	Cable, Electrical, Button to CAN Board
*	AAA25400BT21	Cable, Electrical, Jewel to RSL Board
	AAA25400BV21	Cable, Electrical, Jewel to CAN Board
*	ABA174SH08 ABA174SH8	Cable, Electrical, Hall Fixture, w/ 4-Pin IDC Connector, CAN, for DAA26800Q1 Connection
*	ABA174SH09 ABA174SH9	Cable, Electrical, Hall Fixture, w/ RS14 Connector for DCA26800AL1 Connection
*	AAA25400BT111	Cable, Electrical, SES Phase 1 Fire Recall Keyswitch to RSL Board
2	AAA340CV9	Collar, Keyswitch, Fire Recall, English or French Option
3	AAA340CV7	Collar, Jewel, Fire Recall, English or French Option
4	NON7203M3-8-Z	Hardware, M3 Hex Locknut, w/ Lock Washer, Ground Studs
5	DIN6797A-M4-350HV-Z	Hardware, M4 External Tooth Lock Washer, Face Plate Ground Stud
6	AAA102ABK1	Label, Earth Ground
7	FAA72N1	Nut, Button
8	AAA72JZ1	Nut, Jewel and Keyswitch
*	---	Plate, Data, Type AAA102VB, See SPL 31-AAA102VB
9	AAA141AN1	Rivet, Snap, Mounting, RS14 (RSL) + CF14 (CAN)
10	72BX7	Speed Nut, #8/M4

* Part not shown.

Type I Landing Fixture Components for eCALL Option Only

32-AAA23852C



AAA23852C		
REF. No.	PART No.	DESCRIPTION
1	AAA316LCF1	Bracket, Holding, eCALL
2	AAA174CEH2	Cable, Electrical, eCALL RSL Connection
3	HAA639G102	Module, BLE, eCALL
4	AAA141AN1	Snap, Rivet, RS14 Mounting