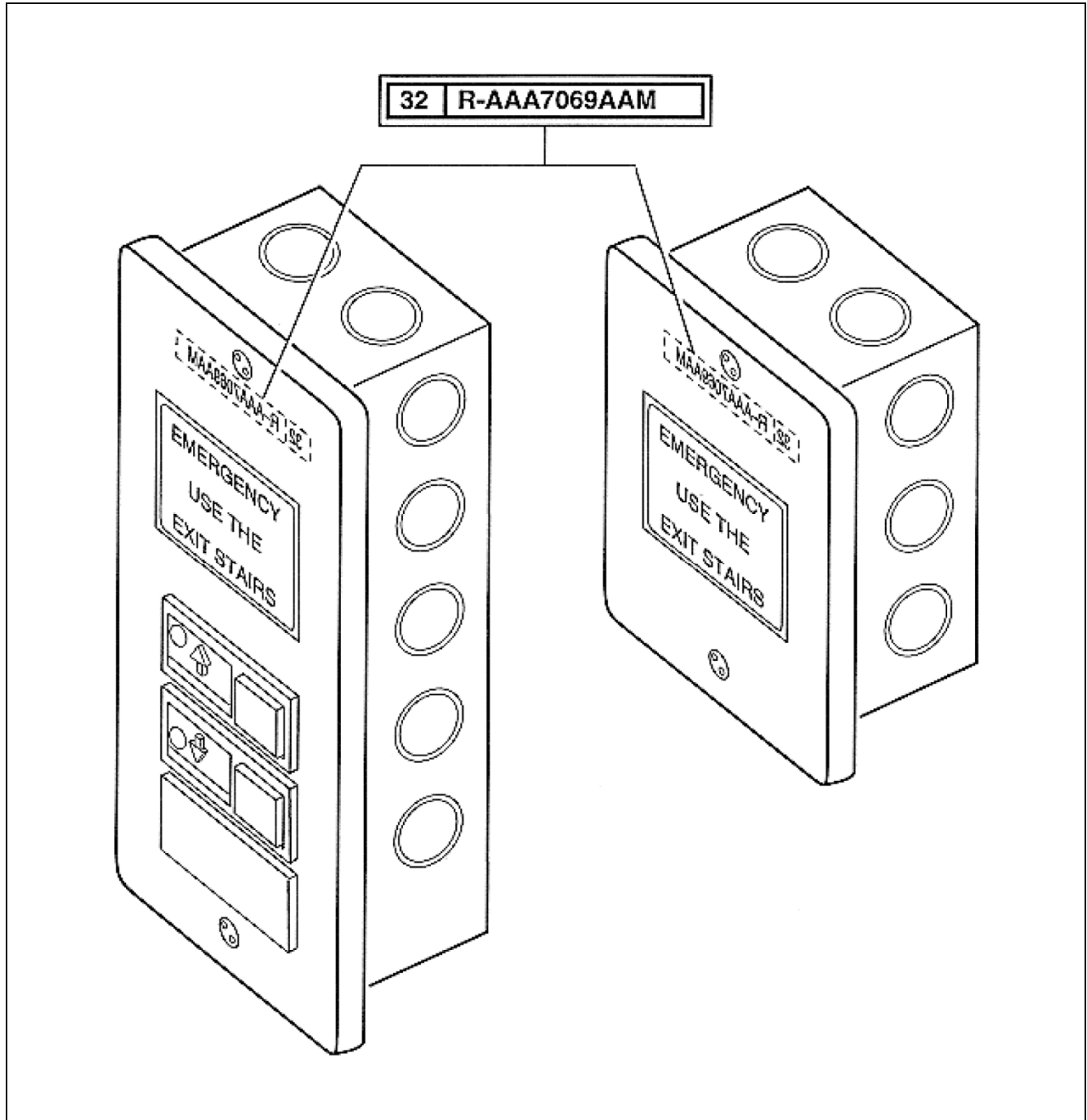


GEM Series 1, Advanced,
Raised Flashing Sign
Hall Panel

Spare Parts Leaflet
32-AAA7069AAM

January 25, 2012 / Page 1 of 5



Unpublished Work—© Otis Elevator Co.; 2012

OTIS

Safety First!

SERVICE ENGINEERING
Otis Elevator Company
Bloomfield, Connecticut USA

Leaflet Description

This SPL contains the lowest replaceable units for the GEM Series 1 Advanced Raised fixture hall panels with flashing signs. Arrangement 1 supports the inclusion of up to three button modules and/or keyswitches. It is shown in this SPL with 2 buttons and 1 keyswitch. Arrangement 2 is for the flashing sign alone.

Leaflet Revisions

Date Revised	Subject Matter Expert	Reason for Revision
August 1995		
February 1997		
January 25, 2012	Joseph D. Zych	Added tamper-resistant screws (124DK23-26), cable assemblies (AAA00174AAL088 & -089), and cable jumper (ABA174XY66).

Related Drawings

Drawing No.	Title	Drawing No.	Title
AAA7069AAM	Flashing Sign Hall Assembly	AAA147NX	Faceplate Hall Panels

Related Documents

Document ID	Title
31-7069AF	Advanced Fixtures: Component Fixtures for Car Operations and Hall Panels
32-AAA147NX	Advanced Fixture: Raised Faceplates
31-AAA7069AAK	Keyswitch Module

Subject Matter Expert

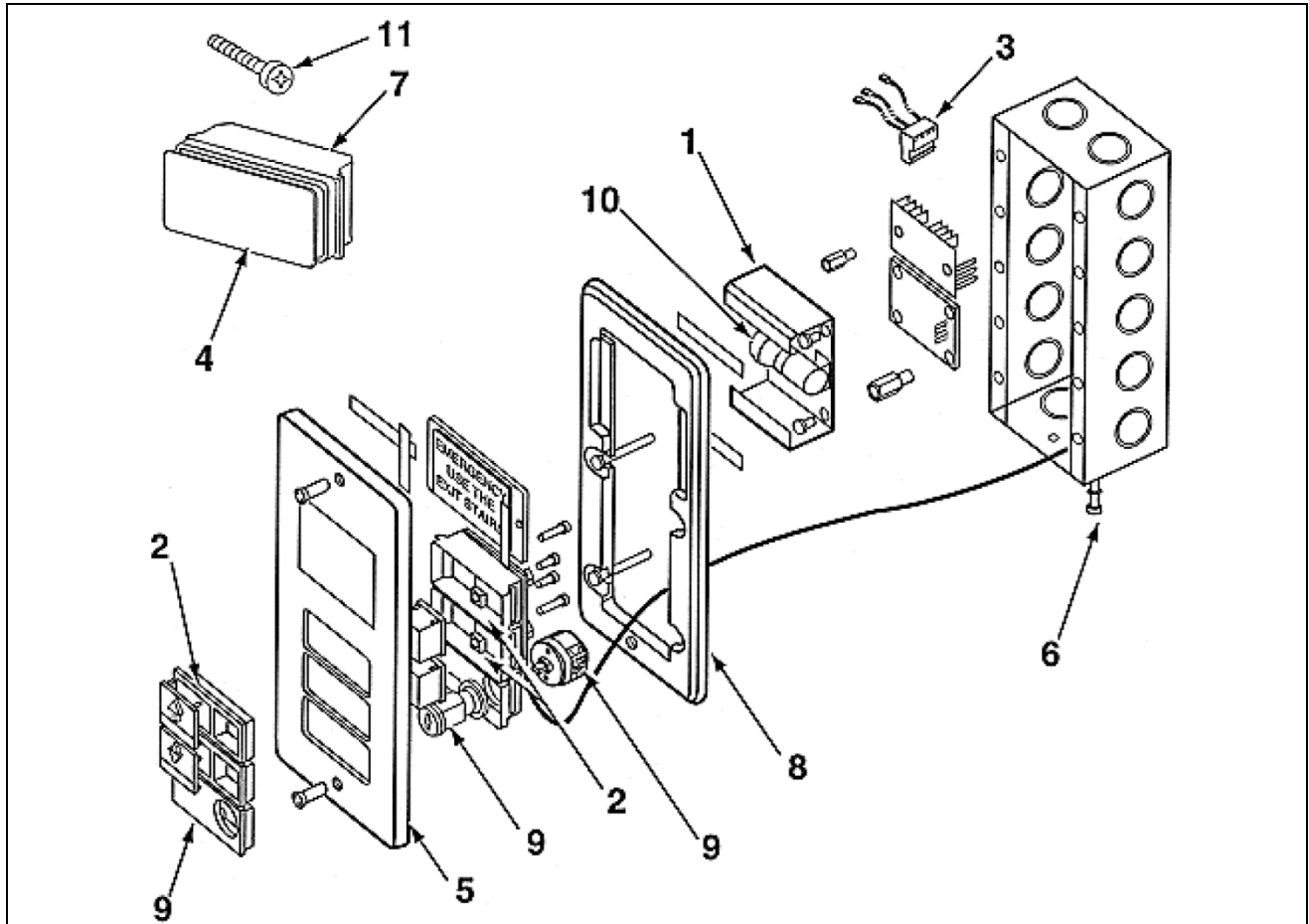
Name	Department
Joseph D. Zych	OSC Service Engineering

About Spare Parts Leaflets...

This document lists the lowest replaceable units (LRUs) for the standard version of the product. The LRUs are chosen by a team of Otis associates representing engineering and manufacturing.

While goal of this document is to make parts identification as easy as possible, the document cannot be all-inclusive. Elevator and escalator contracts classified as "special" or "custom" are not addressed here. For such contracts, please refer to specified information, the contract folder, TIPS, Field Education Articles, Construction Letters, etc. for further information.

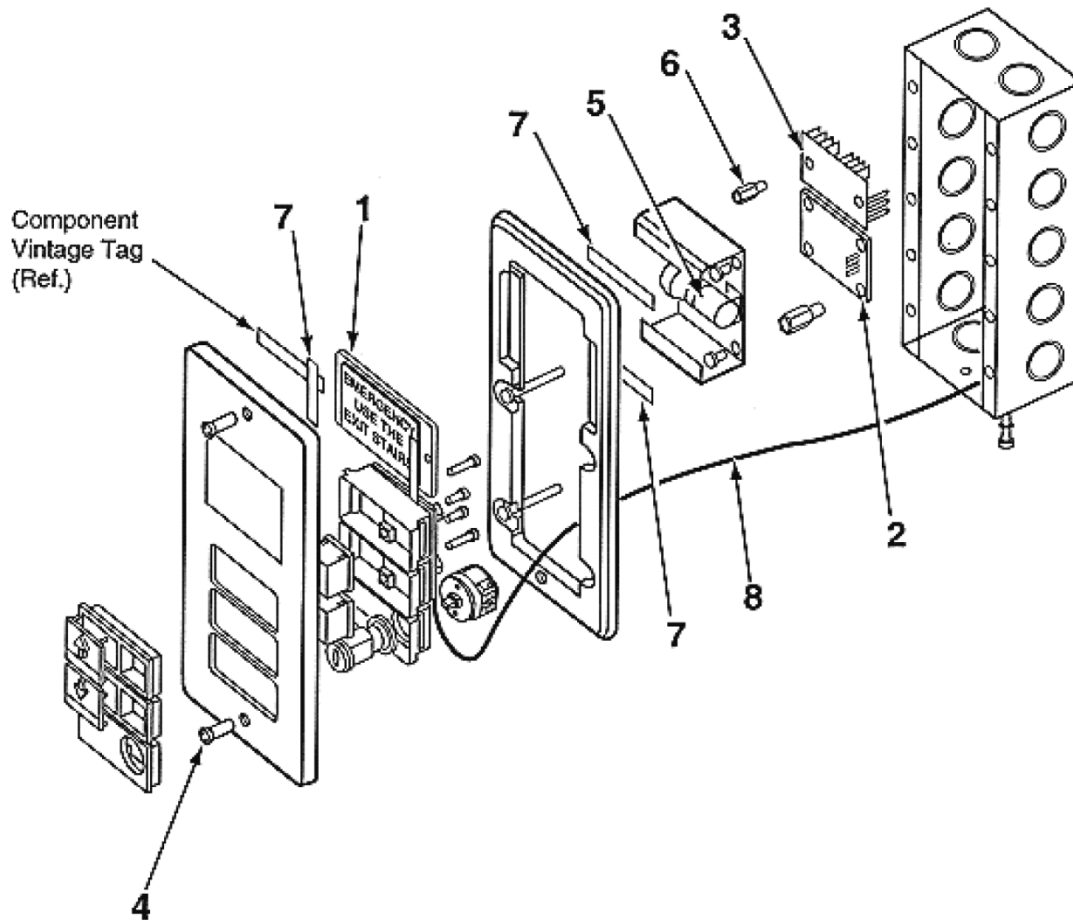
If you have any suggestions about this document, please contact the subject matter expert listed on this page.



For Use With Up To 3 Keyswitches and/or Button Modules

REF. No.	PART No.	DESCRIPTION
	AAA7069AAM	
1	AAA316FVH1	Bracket, Lamp
2	---	Button Module, See SPL 31-7069AF
3	AAA00174AAL015 AAA00174AAL088	Cable Assembly (Buffer PCB to RS5 PCB)
4	396LB1	Chicklet, Used with Blank Module (in place of button or keyswitch)
5	---	Faceplate, Used with Flashing Sign & Buttons/Keyswitches, See SPL 32-AAA147NX.
6	AAA00026AAM002	Hardware for Grounding
7	396VB1	Housing, Used with Blank Module (in place of button or keyswitch)
8	A396JP2	Housing
9	---	Keyswitch Module, See SPL 31-AAA7069AAK.
10	424D6	Lamp, DC Bayonet Base, 28.0 V, Bulb Style G-6.
11	124CY2	Screw, Thread Forming, M3x12 mm L, Used with Blank Module

(Continued on next page)



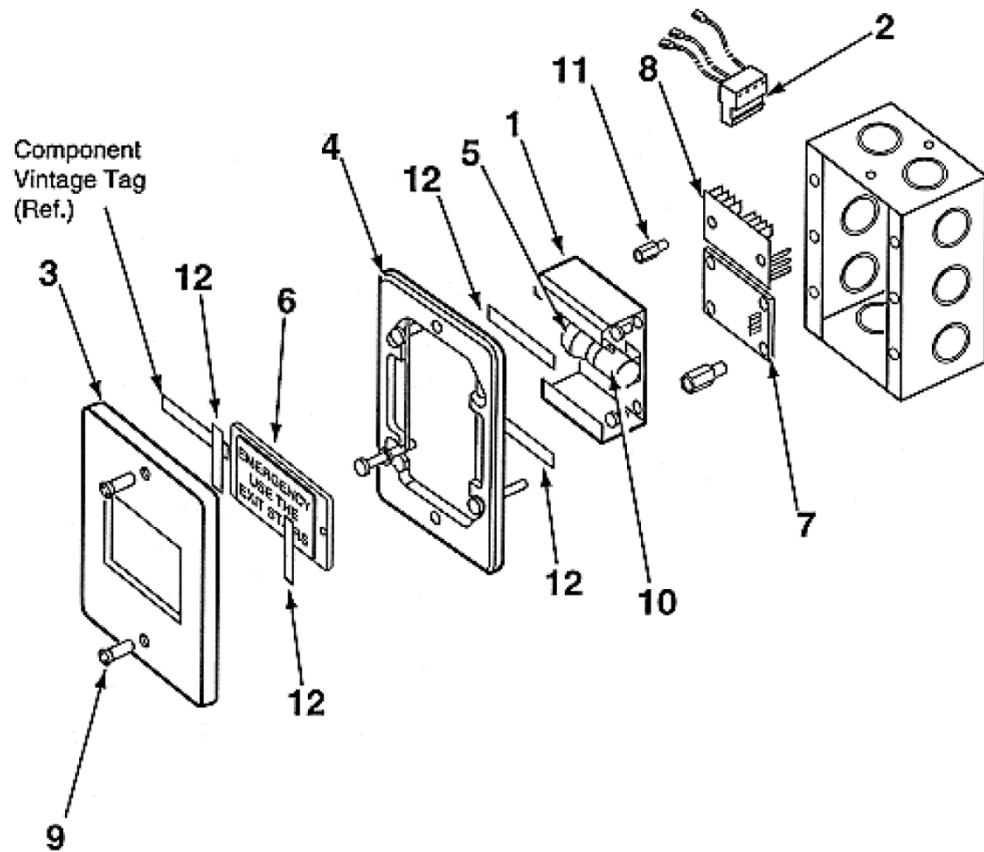
For Use With Up To 3 Keyswitches and/or Button Modules

AAA7069AAM

REF. No.	PART No.	DESCRIPTION
---	ABA174XY66	Cable Jumper (not shown)
1	AAA443DV1	Lens Assembly, Lens and Label, Marked: Emergency Use The Stairs
2	C8121BB1	PC Board, Buffer
3	GCA23550D1 GCA23550D1	PC Board, Remote-Station 5
4	124DK25	Screw, Tamper Resistant, Stainless Steel, used w/Finish MF4, SS4
	124DK26	Screw, Tamper Resistant, Stainless Steel, used w/Finish BR7
	124DK23	Screw, Tamper Resistant, Stainless Steel, used w/Finish SS8
	124DK24	Screw, Tamper Resistant, Stainless Steel, used w/Finish BR8
5	467AX1	Socket, Lamp
6	354AG57	Stand-Off, m3 x 0.5, 14.76 mm L
7	AAA26YC2	Tape, Joining, To be cut according to: 2.6 in x 0.5 in. (lamp brkt. to faceplate); 1.5 in. x 0.35 in. (Lens to faceplate)
8	174DD11	Wire, Ground (1 per keyswitch)

Flashing Sign Hall Assembly

32-AAA7069AAM



Flashing Sign Alone

REF. No.	PART No.	DESCRIPTION
	AAA7069AAM	
1	AAA316FVH1	Bracket, Lamp
2	AAA00174AAL045 AAA00174AAL089	Cable Assembly (Buffer PCB to RS5 PCB)
3	---	Faceplate, Used with Flashing Sign, See SPL 32-AAA147NX.
4	A396JN2	Housing
5	424D6	Lamp, DC Bayonet Base, 28.0 V, Bulb Style G-6
6	AAA443DV1	Lens Assembly, Lens and Label, Marked: Emergency Use The Stairs.
7	C8121BB1	PC Board, Buffer
8	GBA23550D4 GCA23550D1	PC Board, Remote-Station 5
9	124DK25	Screw, Tamper Resistant, Stainless Steel, used w/Finish MF4, SS4
	124DK26	Screw, Tamper Resistant, Stainless Steel, used w/Finish BR7
	124DK23	Screw, Tamper Resistant, Stainless Steel, used w/Finish SS8
	124DK24	Screw, Tamper Resistant, Stainless Steel, used w/Finish BR8
10	467AX1	Socket, Lamp
11	354AG57	Stand-Off, m3 x 0.5, 14.76 mm L
12	AAA26YC2	Tape, Joining, To be cut according to: 2.6 in X 0.5 in. (lamp brkt. to faceplate); 1.5 in. X 0.35 in. (Lens to faceplate)