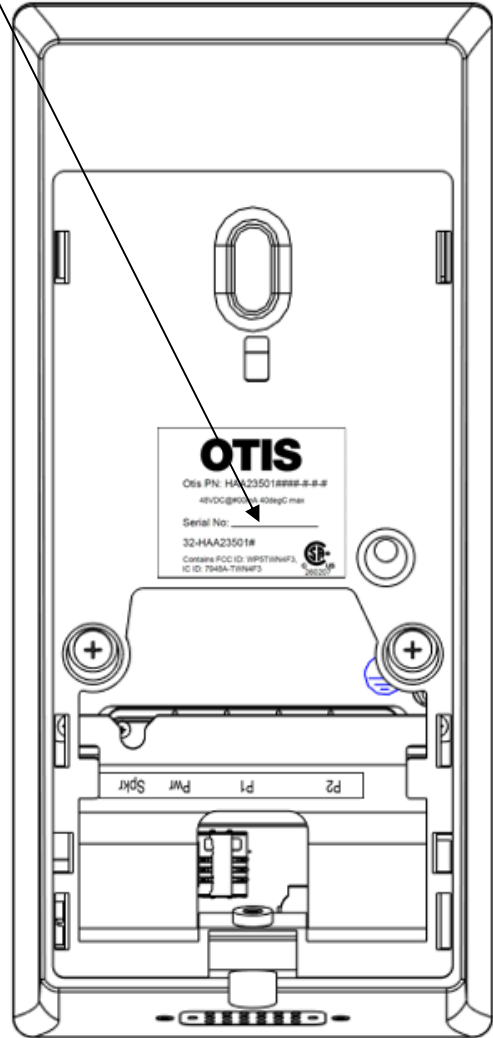
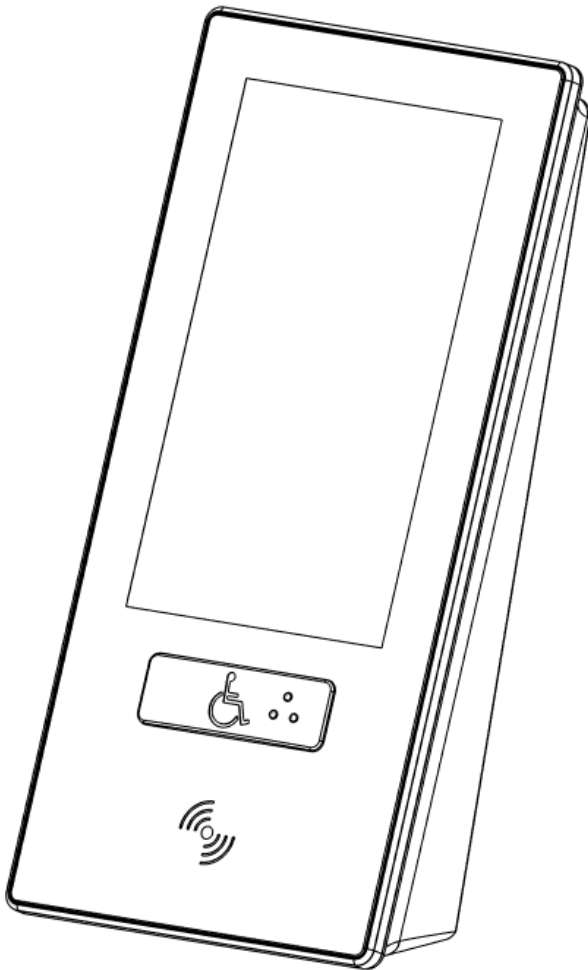


Compass® 360 Angle Mount Touch Pad

Spare Parts Leaflet 32-HAA23501C

24-Jan-2019 / Page 1 of 4

32 H-HAA23501C



Unpublished Work—© Otis Elevator Co.; 2019

OTIS

Safety First!

SERVICE ENGINEERING
Otis Elevator Company
CEC Shanghai & Korea

Leaflet Description

This leaflet summarizes the Compass®360 Angle Mount Touch Pad.

Leaflet Revisions

Date Revised	Subject Matter Expert	Reason for Revision
24-Jan-2019	Shanghua Yang	New SPL

Related Drawings

Drawing No.	Title	Drawing No.	Title
HAA23501C	Compass®360 Angle Mount Touch Pad	HAA23501D	Compass®360 Angle Mount Touch Screen
HAA23501E	Compass®360 Flush Mount Touch Pad	HAA23501F	Compass®360 Flush Mount Touch Screen
AAA25300AV	Compass®360 controller		

Related Documents

Document ID	Title
SPL 10-AAA25300AV	Compass®360 controller

Subject Matter Expert

Name	Department
Shanghua Yang	CEC Shanghai & Korea

About Spare Parts Leaflets...

This document lists the lowest replaceable units (LRUs) for the standard version of the product. The LRUs are chosen by a team of Otis associates representing engineering and manufacturing.

While goal of this document is to make parts identification as easy as possible, the document cannot be all-inclusive. Elevator and escalator contracts classified as “special” or “custom” are not addressed here. For such contracts, please refer to specified information, the contract folder, TIPs, Field Education Articles, Construction Letters, etc. for further information.

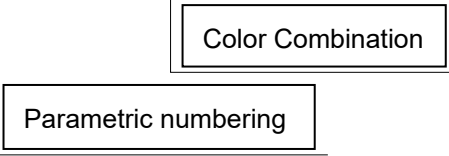
If you have any suggestions about this document, please contact the subject matter expert listed on this page.

Touch Pad

32-HAA23501C

Numbering system (only for OSC & Berlin SSI):

HAA23501C * * * - * - * - *



NOTE: When ordering replace the asterisks (*) referenced in each part number with the appropriate character from table 1.

Table 1

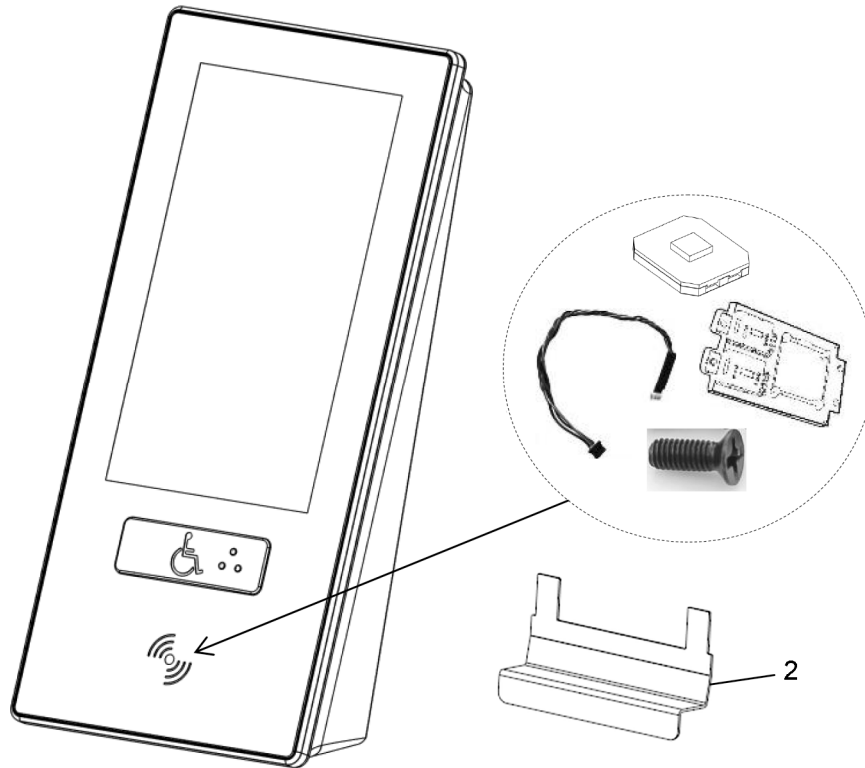
Base part number					Color Combination			
HAA23501C***				-	*_*_*			
Parameter Description	***	RFID	ADA type ^{note}		*_*_*	Faceplate glass color	ADA button color	Front cover color
Value	999	Yes	Standard	-	1-1-1	Black	Black	Black
	998	Yes	SF Button		1-1-2	Black	Black	Silver
	997	Yes	No		1-1-3	Black	Black	Gold
	996	No	Standard		2-2-2	Silver	Silver	Silver
	995	No	SF Button		2-2-1	Silver	Silver	Black
	994	No	No		3-3-3	Gold	Gold	Gold
					3-3-1	Gold	Gold	Black
					4-2-2	White	Silver	Silver
					1-2-2	Black	Silver	Silver
					2-1-2	Silver	Black	Silver
				3-1-3	Gold	Black	Gold	

NOTE: ADA type: "Standard" means the button without angle, "SF Button" means the button with a nine degree angle, "NO" means without ADA button.

Example1: HAA23501C999-1-1-1 means this fixture type is Touch Pad, with "RFID reader", with "Standard" button, Faceplate glass color is black, ADA button color is black, Front cover color is black.

Touch Pad

32-HAA23501C



HAA23501C		
REF. No.	PART No.	DESCRIPTION
1	HAA27801A1	RFID reader Note
2	HAA634L1	Tool, Open

NOTE: Kit = RFID reader PCB + cable + (4) M2X5 Cross recessed countersunk flat head screws+ off-board LED.