

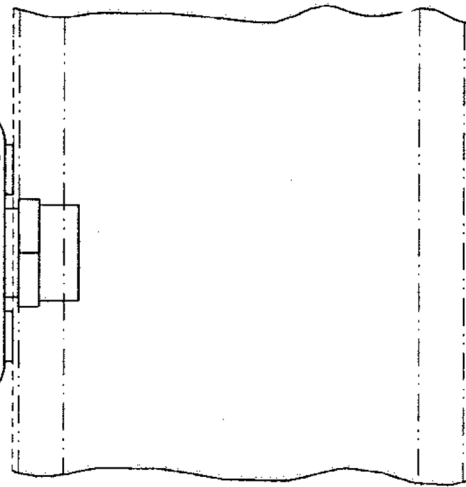
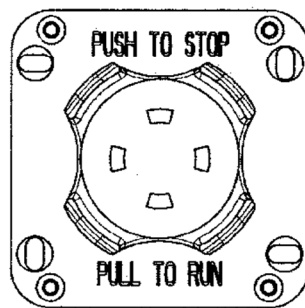
Emergency Stop Switch

Spare Parts Leaflet

35-AAA22800H

March 3, 2021 / Page 1 of 3

**W/O
VINTAGE**



OTIS

This document does not contain any
technical data subject to EAR or ITAR

SERVICE ENGINEERING
Otis Elevator Company
Bloomfield, Connecticut USA

Unpublished Work—© Otis Elevator Co.; 2021

Leaflet Description

This leaflet provides spare parts information for type AAA22800H emergency stop switch.

Leaflet Revisions

Date Revised	Subject Matter Expert	Reason for Revision
February 10, 2003	Wendy Smerk and Troy Chicoine	New leaflet
July 10, 2004	Wendy Smerk	Minor changes on History page.
March 3, 2021	David Woolford	Added new emergency stop switch p/n AAA22800H403

Related Drawings

Drawing No.	Title	Drawing No.	Title
AAA29000AC	Arrangement GEN2 R2 NAA (953 and 1134 kg duties)	AAA29000AF	Arrangement GEN2 NSAA (2500–4000 lb. passenger duties; 4000–5000 lb. hospital duties)
AAA29000AD	Arrangement GEN2R2 NAA (2500–4000 lb. passenger duties; 4000–5000 lb. hospital duties)	---	---

Related Documents

Document ID	Title
---	---

Subject Matter Expert

Name	Department
David Woolford	System Engineer (Florence)

About Spare Parts Leaflets...

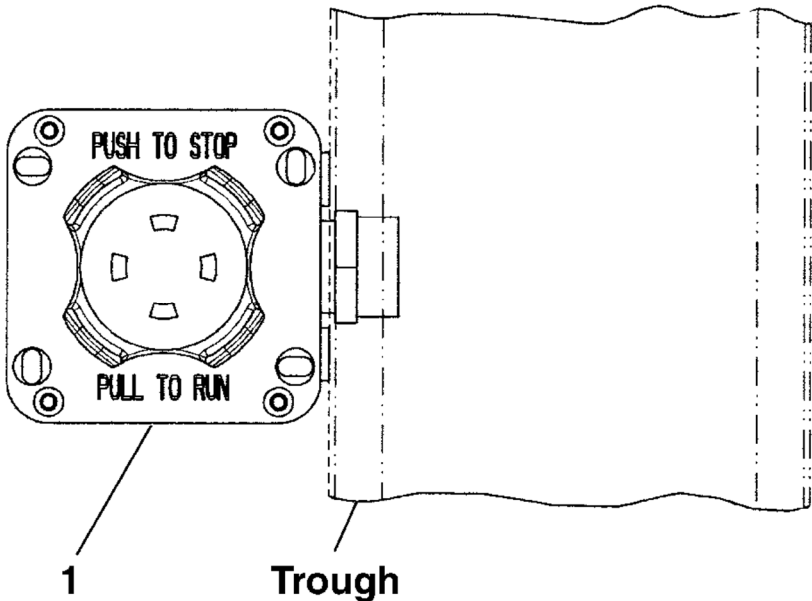
This document lists the lowest replaceable units (LRUs) for the standard version of the product. The LRUs are chosen by a team of Otis associates representing engineering and manufacturing.

While goal of this document is to make parts identification as easy as possible, the document cannot be all-inclusive. Elevator and escalator contracts classified as “special” or “custom” are not addressed here. For such contracts, please refer to specified information, the contract folder, TIPS, Field Education Articles, Construction Letters, etc. for further information.

If you have any suggestions about this document, please contact the subject matter expert listed on this page.

Emergency Stop Switch

35-AAA22800H



W/O VINTAGE		
REF. No.	PART No.	DESCRIPTION
1	AAA22800H401	Emergency Stop Switch
	AAA22800H403	Emergency Stop and Access Alert Switch (2 sets of contacts)