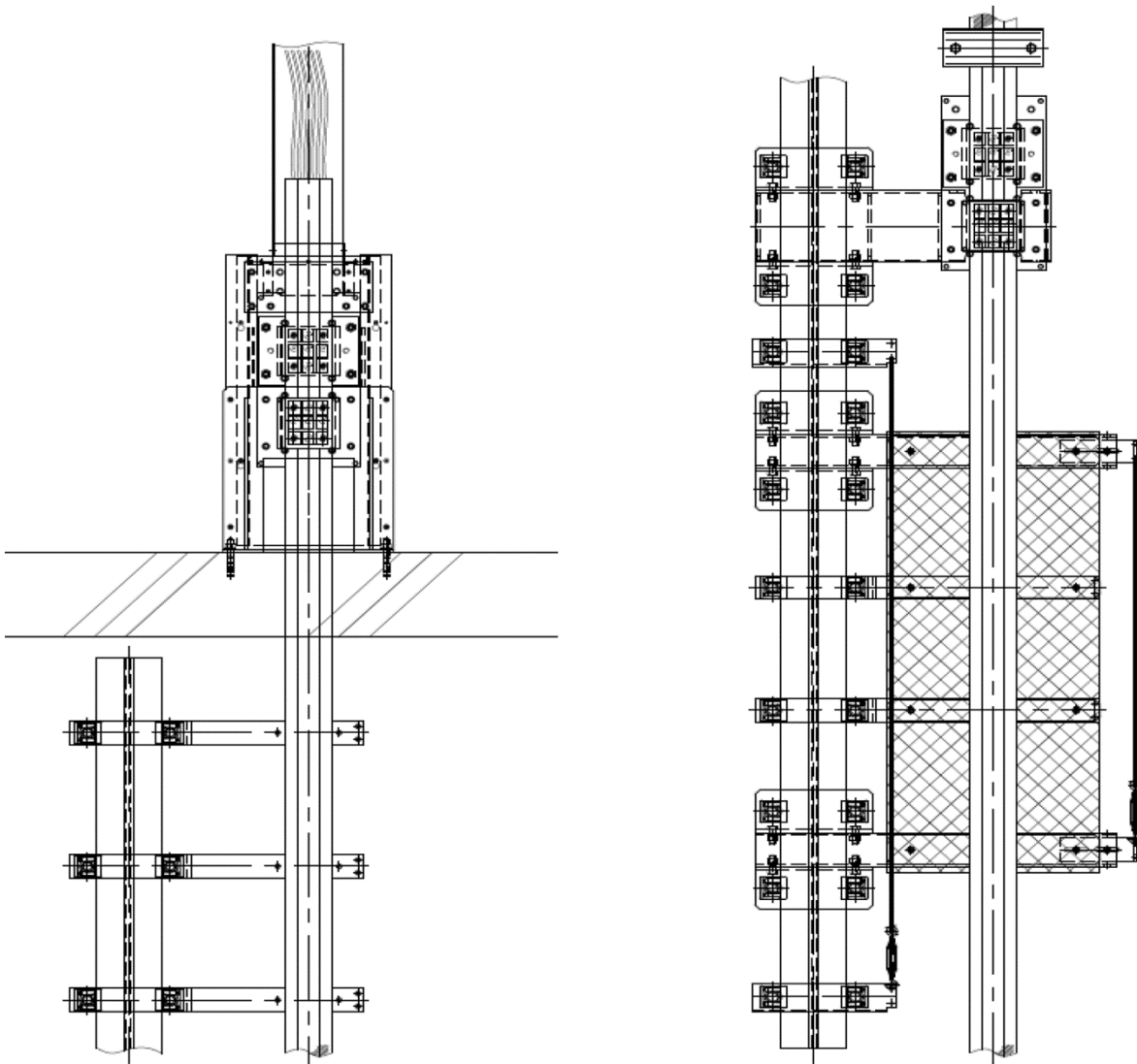


Cable, Electrical Flat Traveling Cable

Spare Parts Leaflet 38-AAA174AZR

April 24, 2024 / Page 1 of 3

**W/O
VINTAGE**



OTIS

This document contains technical data subject
to the EAR. ECCN = EAR99

SERVICE ENGINEERING
Otis Elevator Company
HR-SIT, Shanghai China

Leaflet Description

This leaflet provides information for the part numbers and characteristics of traveling cable. The systems that use this type of cable are Skyrise. It is recommended to identify the replacement cable by providing the number and size of the internal conductors. From this information, a part number may be derived. Additional accessories are listed in SPL 38-AAA25500BW.

Leaflet Revisions

Date Revised	Subject Matter Expert	Reason for Revision
March 28, 2014	Hiroyuki Ikeda	New SPL
April 24, 2024	Gary Mendrala	Change note on p. 3 to indicate correct unit of measure (feet, not meters)

Related Drawings

Drawing No.	Title	Drawing No.	Title
AAA174AZR	Flat Cable	AAA25500BW	Traveling Cable Arrangement

Related Documents

Document ID	Title
SPL 38-AAA25500BW	Flat Traveling Cable Arrangement and Related Sundries

Subject Matter Expert

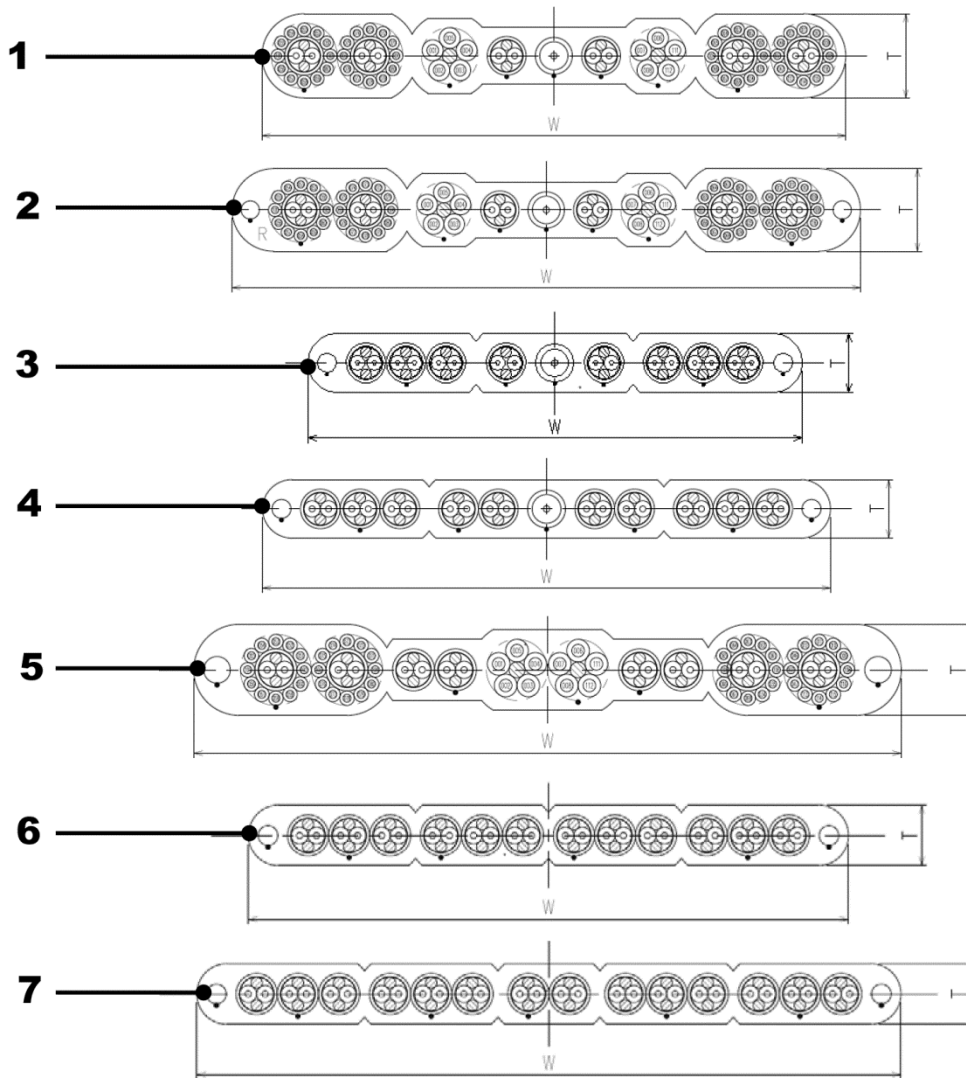
Name	Department
Gary Mendrala	Service Engineer

About Spare Parts Leaflets...

This document lists the lowest replaceable units (LRUs) for the standard version of the product. The LRUs are chosen by a team of Otis associates representing engineering and manufacturing.

While goal of this document is to make parts identification as easy as possible, the document cannot be all-inclusive. Elevator and escalator contracts classified as “special” or “custom” are not addressed here. For such contracts, please refer to specified information, the contract folder, TIPs, Field Education Articles, Construction Letters, etc. for further information.

If you have any suggestions about this document, please contact the subject matter expert listed on this page.



W/O VINTAGE		DESCRIPTION										
Ref. No.	Part No.	Weight (kg/m)	Steel Wire	W (mm)	T (mm)	Max Hanging Length (m)		CROSS SECTION				Natural loop (mm)
						Sus. Device	Steel Core	AWG 14	AWG 18	AWG20 STP	Coaxial	
1	AAA174AZR999	2.29	N	94	13.7	60	-	10	48	6P	1	600
2	AAA174AZR998	2.52	Y	103	13.7	-	110	10	48	6P	1	670
3	AAA174AZR997	1.14	Y	74.4	9.3	-	110	0	0	8P	1	630
4	AAA174AZR996	1.36	Y	87	9.3	-	110	0	0	10P	1	630
5	AAA174AZR995	2.57	Y	106.4	13.7	-	160	10	48	8P	0	670
6	AAA174AZR994	1.33	Y	96.6	9.3	-	160	0	0	12P	0	630
7	AAA174AZR993	1.59	Y	106.2	9.3	-	160	0	0	14P	0	630

NOTE: When ordering specify length in feet.