

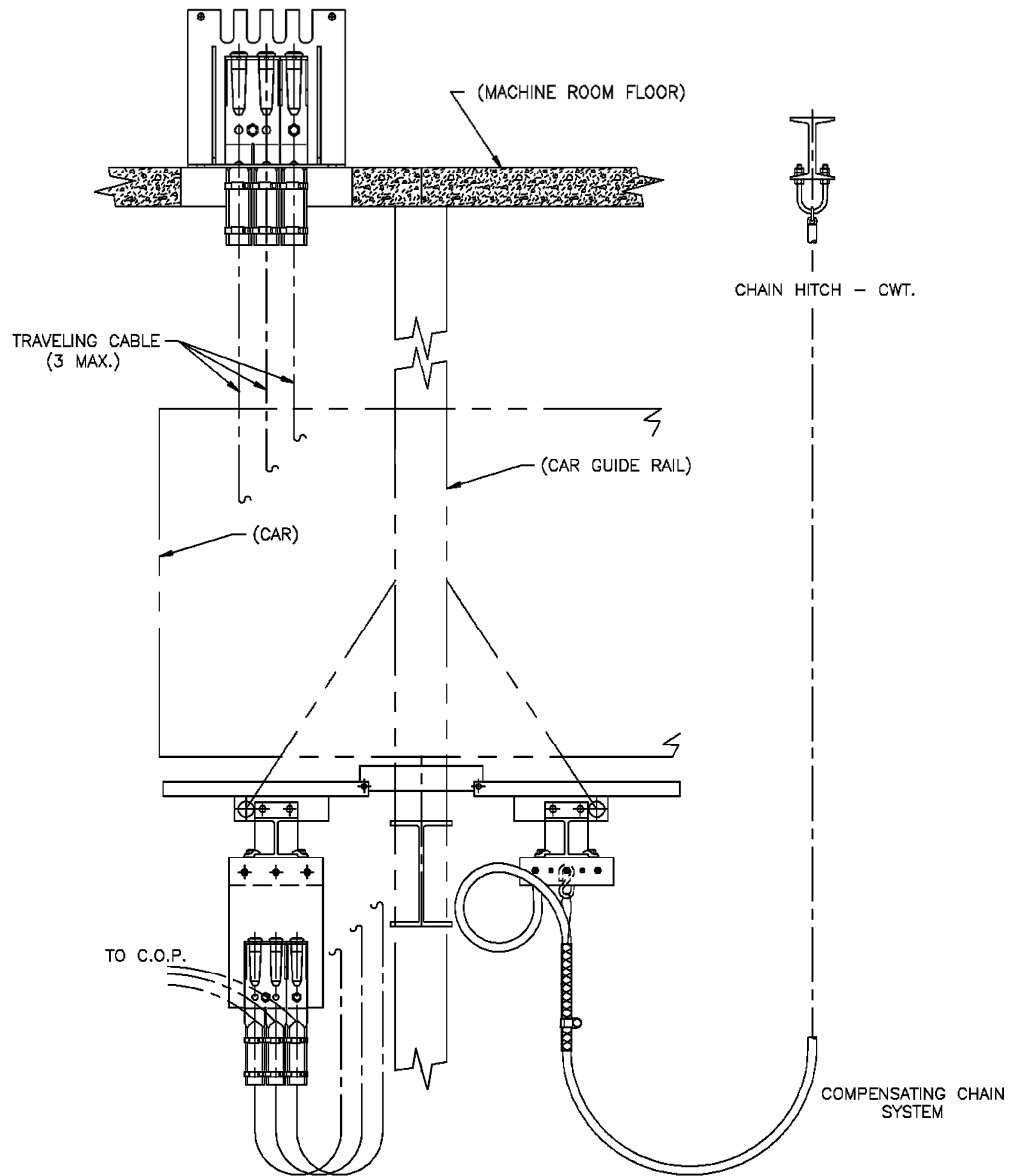
Traveling Cable & Related Sundries

Spare Parts Leaflet

38-AAA174ZG

September 16, 2020 / Page 1 of 6

**W/O
VINTAGE**



**Typical
Application**

**Traveling cable & compensation chain
arrangement for 9C / 11C carframe
with steel core cable shown.**

OTIS

This document does not contain any
technical data subject to EAR or ITAR

SERVICE ENGINEERING

Otis Elevator Company

Bloomfield, Connecticut USA

Unpublished Work—© Otis Elevator Co.; 2020

Leaflet Description

SPL 38-AAA174ZG lists all part numbers currently associated with traveling cable and traveling cable sundries.

Leaflet Revisions

Date Revised	Subject Matter Expert	Reason for Revision
January 20, 2006	Sean Mismas	New SPL
May 28, 2009	Gary Mendrala	p. 3 added p/n AAA174ZG968–975. Corrected p/n from AAA336MG51 to AAA336MG5 (p.6).
April 7, 2010	Gary Mendrala	Updated pp. 3 and 4
July 21, 2010	Gary Mendrala	Added p/ns AAA174ZG966 and AAA174ZG967 on p. 3
October 26, 2011	Gary Mendrala	Clarified rope weights and added p/ns AAA174ZG964 and -5.
September 16, 2020	Gary Mendrala	Corrected information for p/n AAA174ZG996 on p. 4

Related Drawings

Drawing No.	Title	Drawing No.	Title
AAA174ZG	Traveling Cable	AAA25500AK	Traveling Cable Arrangement Gen2R2 ED
AAA25500AH	Traveling Cable Arrangement, Gen2, LD	336HT	Clamp Cable Support
AAA336MG	Cable Hanger		

Related Documents

Document ID	Title
SPL 38-AAA25500AH	Traveling Cable, Gen2R2 LD
TIP 5.1-3	Traveling Cables
OMM N-1.1.12-17	Traction Elevator Installation

Subject Matter Expert

Name	Department
Gary Mendrala	OSC, Service Engineering

About Spare Parts Leaflets...

This document lists the lowest replaceable units (LRUs) for the standard version of the product. The LRUs are chosen by a team of Otis associates representing engineering and manufacturing. While goal of this document is to make parts identification as easy as possible, the document cannot be all-inclusive. Elevator and escalator contracts classified as “special” or “custom” are not addressed here. For such contracts, please refer to specified information, the contract folder, TIPs, Field Education Articles, Construction Letters, etc. for further information.

If you have any suggestions about this document, please contact the subject matter expert listed on this page.

Traveling Cables

38-AAA174ZG

W/O VINTAGE	DESCRIPTION											
	Cable, Electrical, Traveling Cable	Application	AWG Size/Number of Conductors							Core Type	Max. Hang Length (ft.)	Weight (lb./ft.)
			14	18	14 TW	18 TW	20 TW	20 Shielded Pair	Coaxial RG6			
PART No.												
AAA174ZG966	---	LVM w/Coax	13	37	---	---	---	5	1	Jute	200	1.10
AAA174ZG967	---	LVM w/o Coax, w/o OAD+	13	37	---	---	---	5	---	Jute	200	1.08
AAA174ZG968	---	---	10	43	---	--	---	4	1	Jute	200	1.11
AAA174ZG969	---	Hydro	10	43	---	---	---	4	---	Jute	200	1.02
AAA174ZG970	---	Gen2 R2 LD	---	20	---	---	---	14	1	Steel	641	1.06
AAA174ZG971	---	Gen2 MLB3	7	24	---	---	---	3	---	Steel	808	0.70
AAA174ZG972	---	Gen2 R2 LD	7	24	---	---	---	3	---	Jute	200	0.64
AAA174ZG973	---	G2L, GCS, w/Card Reader	10	39	---	---	---	15	1	Steel	900	1.58
AAA174ZG974	---	G2L, GCS, w/COAX	10	39	---	---	---	7	1	Jute	200	1.13
AAA174ZG975	---	G2L, GCS	10	39	---	---	---	7	---	Jute	200	1.12
AAA174ZG976	---	Gen2 w/Coax MLB 3		28	---	---	---	14	1	Steel, 5/32 in.	641	1.09
AAA174ZG977	---	Gen2 w/o Coax MLB 3	---	28	---	---	---	8	---	Steel, 5/32 in.	900	0.74
AAA174ZG978	---	Gen 2 Alternate Low Voltage	8	30	---	---	---	3	---	Steel, 5/32 in.	808	0.84
AAA174ZG979	Low V w/Card Reader	Gen2 ARR Traveling Cable	---	28	---	---	---	14	---	Jute	200	1.04
AAA174ZG980	Low V- Basic	ARR Traveling Cable, Alternate Low Voltage	---	28	---	---	---	8	---	Jute	200	0.68
AAA174ZG981	High V	Gen2 w/o Coax	8	30	---	---	---	3		Jute	200	0.80
AAA174ZG982	---	LVM w/Coax	11	63	---	---	---	3	1	Jute	200	1.19
AAA174ZG983	---	LVM w/o Coax	11	63	---	---	---	3	---	Jute	200	1.19
AAA174ZG984	---	LVM w/Coax	12	53	---	---	---	4	1	Jute	200	1.20
AAA174ZG985	---	LVM	10	45	---	---	---	4	1	Jute	200	1.11

(Continued on Next Page)

Traveling Cables

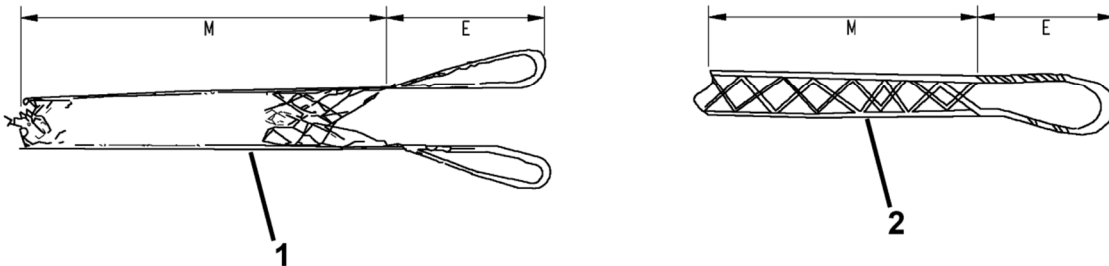
38-AAA174ZG

W/O VINTAGE	DESCRIPTION											
PART No.	Cable, Electrical, Traveling Cable	Application	AWG Size/Number of Conductors							Core Type	Max. Hang Length (ft.)	Weight (lb./ft.)
			14	18	14 TW	18 TW	20 TW	20 Shielded Pair	Coaxial RG6			
AAA174ZG986	---	Hydro	12	53	---	---	---	4	---	Jute	200	1.11
AAA174ZG987	---	---	10	45	---	---	---	4	---	Jute	200	1.01
AAA174ZG988	---	LVM w/Card Reader	---	---	---	---	---	8	---	Jute	200	0.41
AAA174ZG989	---	---	---	26	2	2	2	6	1	Jute	200	0.90
AAA174ZG990	---	---	5	22	---	---	---	---	---	Jute	200	0.46
AAA174ZG991	---	Hydro	15	38	---	---	---	8	---	Steel, 5/32 in.	518	1.35
AAA174ZG992	---	---	11	27	---	---	---	6	---	Steel, 5/32 in.	711	0.98
AAA174ZG993	---	---	11	24	---	---	---	6	---	Jute	200	0.91
AAA174ZG964	---	LVM w/Coax, w/OAD+	13	41	---	---	---	7	1	Jute	200	1.26
AAA174ZG965	---	LVM w/o Coax, w/OAD+	13	41	---	---	---	7	---	Jute	200	1.23
AAA174ZG994	---	---	8	24	---	---	---	3	---	Steel, 5/32 in.	900	0.85
AAA174ZG995	High V	---	8	24	---	---	---	3	---	Jute	200	0.77
AAA174ZG996	---	Hydro	---	26	---	---	---	14	1	Steel, 5/32 in.	649	1.07
AAA174ZG997	---	Alternate Low Voltage	---	26	---	---	---	18	---	Steel, 5/32 in.	609	1.15
AAA174ZG998	Low V w/Card Reader	---	---	26	---	---	---	14	---	Jute	200	1.02
AAA174ZG999	Low V-Basic	ARR Traveling Cable	---	26	---	---	---	8	---	Jute	200	0.70

NOTE: When ordering, specify length in feet.

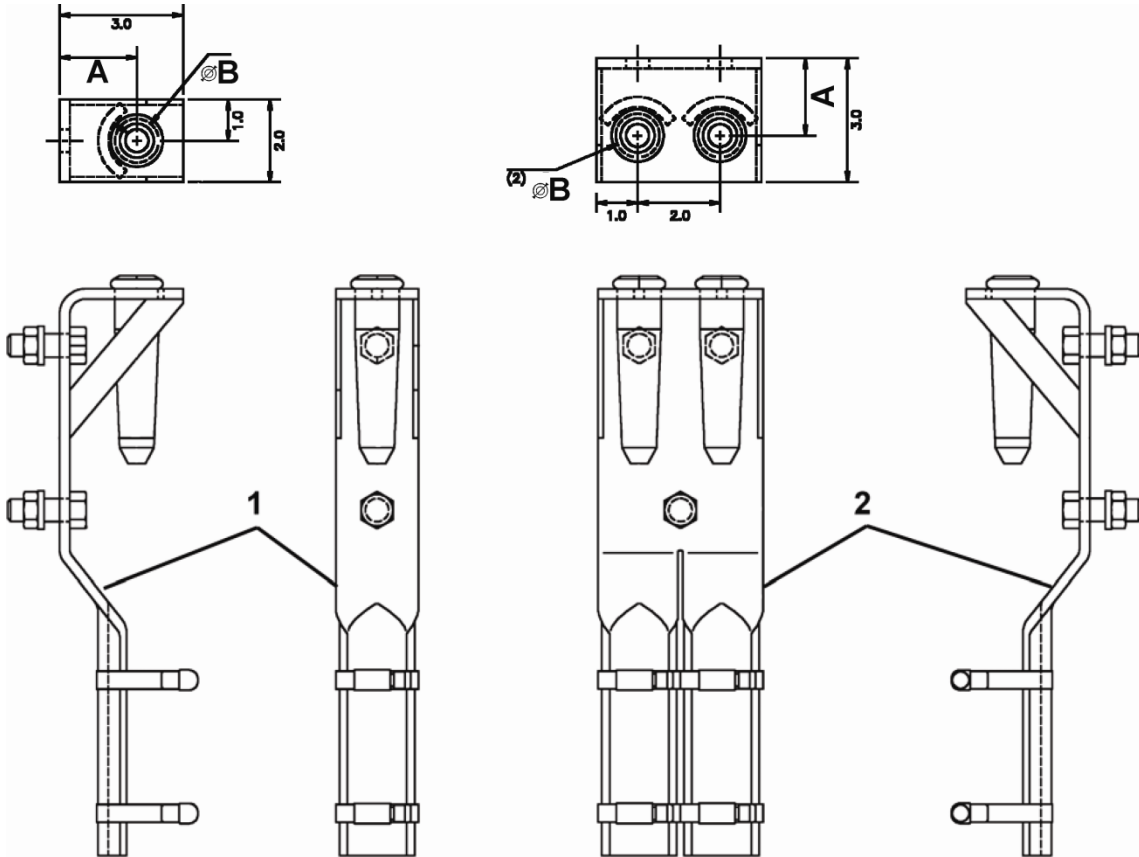
Cable Support Clamps

38-AAA174ZG



REF. No.	W/O VINTAGE	DESCRIPTION			
	PART No.	Cable Dia. Range (in.)	Maximum Load (lbs)	M (in.)	E (in.)
1	336HT1	0.750–0.990	620	13	4
	336HT2	1.000–1.240	800	14	
	336HT3	1.250–1.490	800	15	
	336HT4	1.500–1.740	800	17	
	336HT9	0.750–0.990	204	10.5	5.5
	336HT10	1.000–1.240	322	12.5	5
	336HT11	1.250–1.490	322	14.5	
	336HT13	1.000–1.240	1200	14	12
	336HT14	1,250–1,490	1640	15	
	336HT15	1.500–1.740	1660	17	
	336HT16	1.750–1.990	1800	19	
	336HT17	2.000–2.500	1800	21	
2	336HT5	1.250–1.490	322	15	10
	336HT6	1.500–1.740	322	17	12
	336HT7	0.750–0.990	204	13	8
	336HT8	1.000–1.240	322	14	9
	336HT18	1.000–1.240	530	12.5	9
	336HT19	1.250–1.490	900	14.5	10
	336HT20	1.500–1.740	900	15.5	12
	336HT21	0.750–0.990	410	10.5	8

Cable Hanger



REF. No.	W/O VINTAGE		Hanger, Cable		
	PART No.	Steel Core Size (in.)	Max. Safe Load Per Cable (lb.)	A (in.)	⌀ B (in.)
1	AAA336MG1	5/32	700	1.88	1.06
	AAA336MG3	1/4	1250	1.88	1.16
	AAA336MG5	1/8	500	---	---
2	AAA336MG2	5/32	700	1.88	1.06
	AAA336MG4	1/4	1250	1.88	1.16