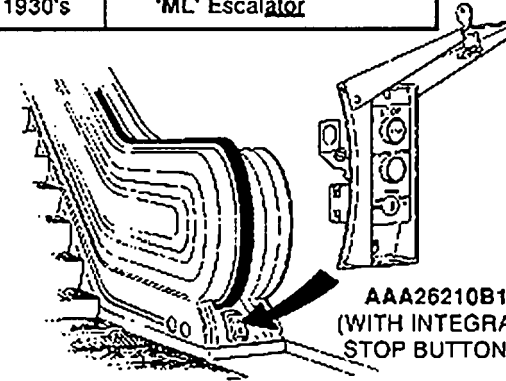
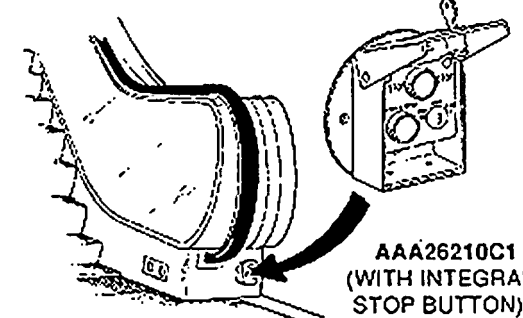
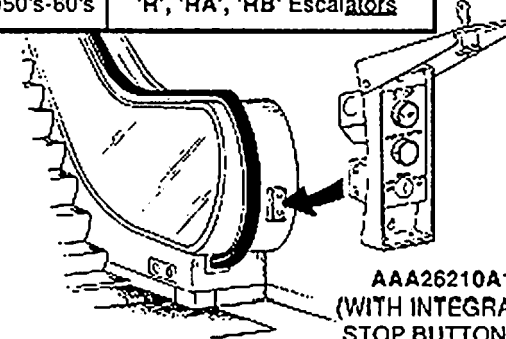
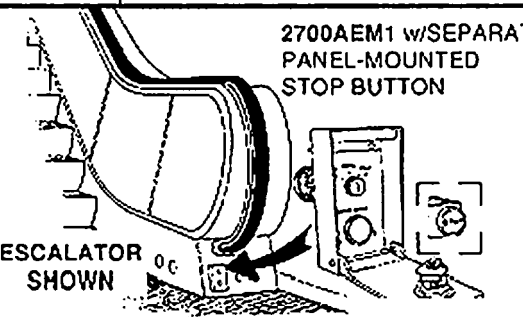
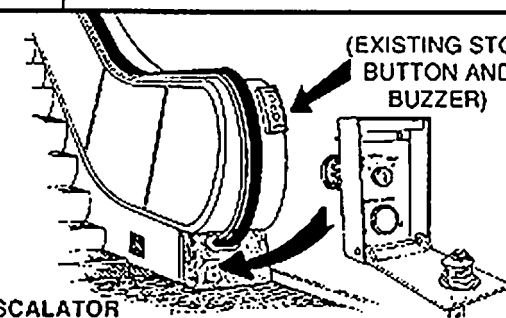
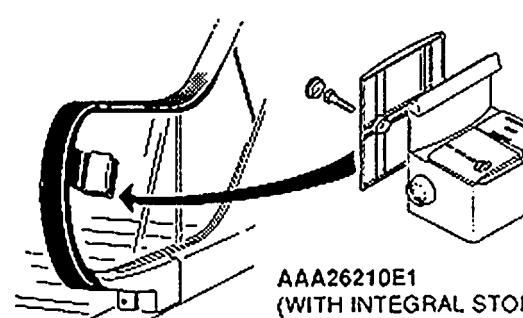


Retrofit Starting Device, New York City Code Retrofit

Spare Parts Leaflet

50-AAA26210A

September 26, 2008 / Page 1 of 9

<p>LOWER NEWEL RADIUS=10-3/8" (265MM)</p> <p>1930's 'ML' Escalator</p>  <p>AAA26210B1 (WITH INTEGRAL STOP BUTTON)</p>		<p>1940's 'O' Escalator</p>  <p>AAA26210C1 (WITH INTEGRAL STOP BUTTON)</p>	
<p>NEWEL RADIUS = 13-3/8" (340MM)</p> <p>1950's-60's 'R', 'RA', 'RB' Escalators</p>  <p>AAA26210A1 (WITH INTEGRAL STOP BUTTON)</p>		<p>'J', 'RB-C', 'RB-D' Escalators Glass Balustrade 'J', 'RA', 'RB', 'RB-C', 'RB-D' ESCAL-AIRE®S</p> <p>1950's-70's</p> <p>2700AEM1 w/SEPARATE PANEL-MOUNTED STOP BUTTON</p>  <p>ESCALATOR SHOWN</p>	
<p>1980's '506' & '510' Escalators & ESCAL-AIRE®S</p> <p>ANY ALL NON-OTIS MODELS</p>  <p>ESCALATOR SHOWN</p> <p>(EXISTING STOP BUTTON AND BUZZER)</p> <p>2700AEM1</p>		<p>1980's '506SL' (Slim Line) Escalator & ESCAL-AIRE®</p>  <p>AAA26210E1 (WITH INTEGRAL STOP BUTTON AND BUZZER)</p>	

OTIS

Safety First!

SERVICE ENGINEERING
 Otis Elevator Company
 Bloomfield, Connecticut USA

Leaflet Description

Describes LRUs of escalator starting devices used exclusively by New York Transit Authority.

Leaflet Revisions

Date Revised	Subject Matter Expert	Reason for Revision
August 1, 1993	Val Sheynkman	New SPL
September 26, 2008	Frank Dyer	Updated part numbers pp 3-8. New page 9.

Related Drawings

Drawing No.	Title	Drawing No.	Title
AAA26210A		AAA26210C	
AAA26210B		2700AEM	
AAA26210E			

Related Documents

Document ID	Title

Subject Matter Expert

Name	Department
Tom Charney	OSC Service Engineering

About Spare Parts Leaflets...

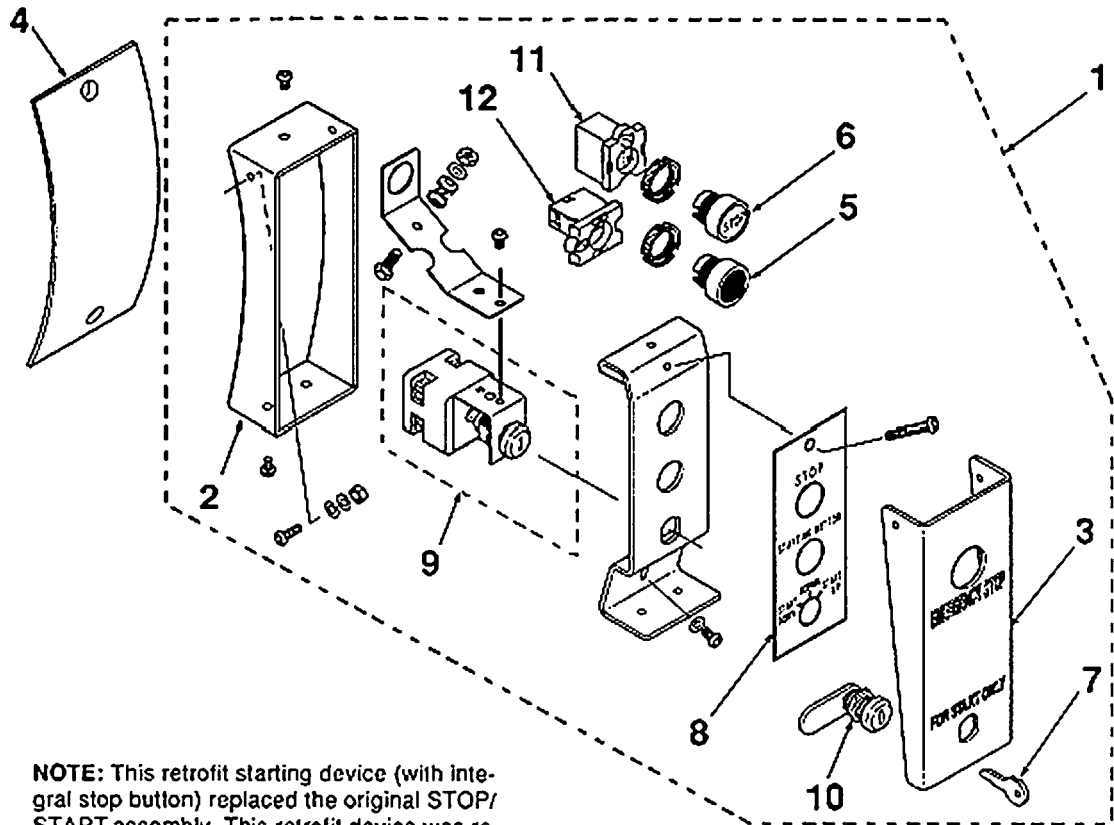
This document lists the lowest replaceable units (LRUs) for the standard version of the product. The LRUs are chosen by a team of Otis associates representing engineering and manufacturing.

While goal of this document is to make parts identification as easy as possible, the document cannot be all-inclusive. Elevator and escalator contracts classified as "special" or "custom" are not addressed here. For such contracts, please refer to specified information, the contract folder, TIPs, Field Education Articles, Construction Letters, etc. for further information.

If you have any suggestions about this document, please contact the subject matter expert listed on this page.

AAA26210A Retrofit Starting Device for R, RA, & RB Escalators

50-AAA26210A

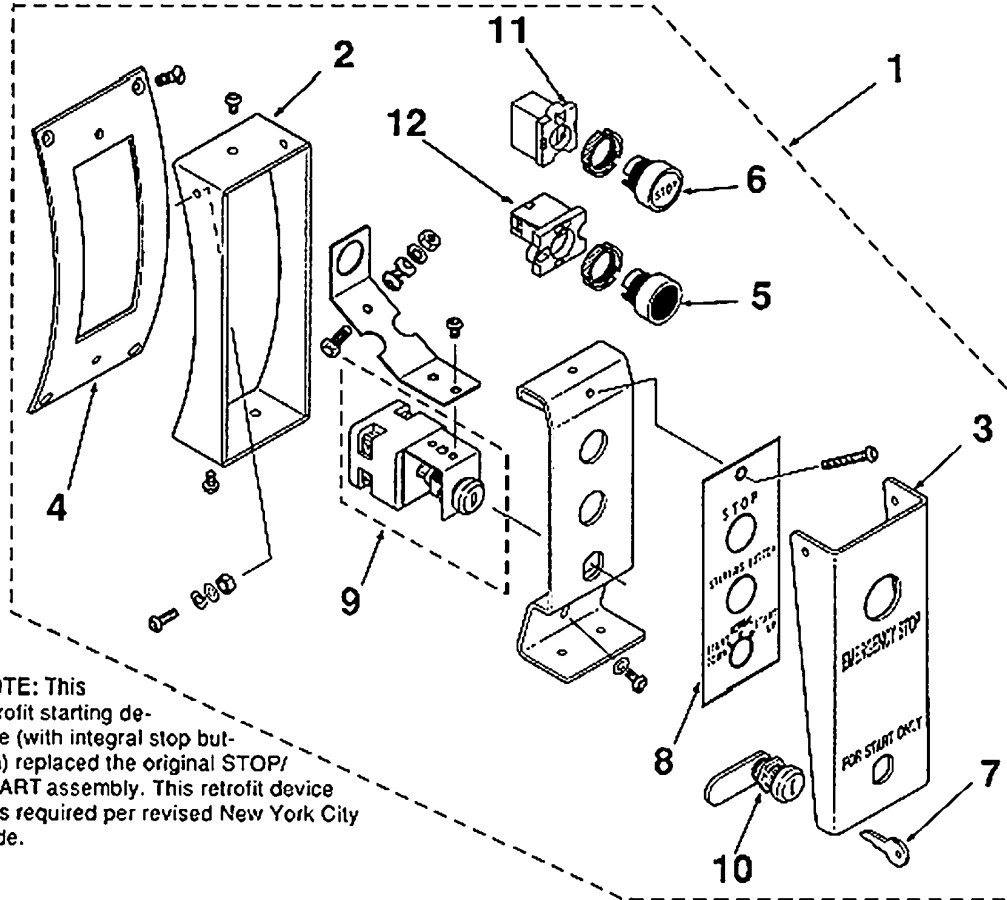


NOTE: This retrofit starting device (with integral stop button) replaced the original STOP/START assembly. This retrofit device was required per revised New York City code.

REF. NO.	W/O VINTAGE PART OR ML	DESCRIPTION
1	AAA26210A1	Assembly, Retrofit Starting Device, ('R', 'RA', 'RB' Escalator)
2	AAA308PJ1	Box
3	AAA346ATS1	Cover Clear
4	AAA147PD3	Faceplate, Blank, (for covering location of old assembly)
5	AAA635H10	Button, Flush Head, Black See p.9
6	AAA635H11	Button, Flush Head, Red w/Text: STOP See p.9
7	AAA194AX1	Key
8	AAA102WT1	Label, Black Background, White Lettering
9	AAA6410AE1	Keyswitch Assembly, w/2 Keys
10	AAA00431AAC005	Lock Assembly w/2 Keys
11	AAA635H2	Contact Block, SPST, Normally Closed (for stop button) See p. 9
12	AAA635H1	Contact Block, SPST, Normally Open (for start button) See p. 9

50-AAA26210A

AAA26210B Retrofit Starting Device for 'ML' Escalator

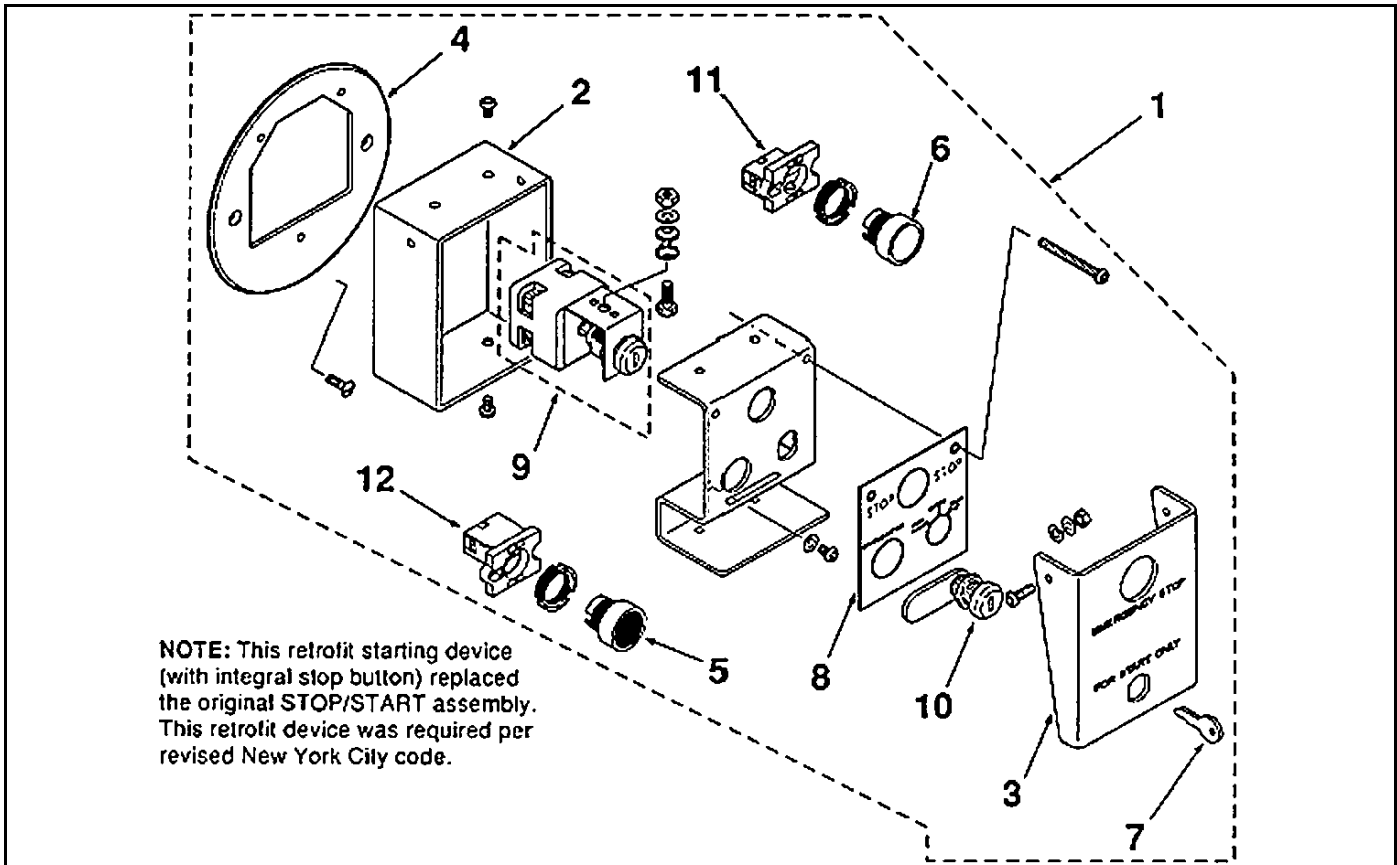


NOTE: This retrofit starting device (with integral stop button) replaced the original STOP/START assembly. This retrofit device was required per revised New York City code.

REF. NO.	W/O VINTAGE PART OR ML	DESCRIPTION
1	AAA26210B1	Assembly, Retrofit Starting Device, (ML Escalator)
2	AAA308PJ3	Box
3	AAA346ATS1	Cover, Clear
4	AAA147PD1	Faceplate,
	AAA147PD2	Faceplate, w/o Cutout & w/o Two Holes (for covering location of old assembly)
5	AAA635H10	Button, Flush Head, Black See p. 9
6	AAA635H11	Button, Flush Head, Red w/Text: STOP See p. 9
7	AAA194AX1	Key
8	AAA102WT1	Label, Black Background, White Lettering
9	AAA6410AE1	Keyswitch Assembly w/2 Keys
10	AAA00431AAC005	Lock Assembly w/2 Keys
11	AAA635H2	Contact Block, SPST, Normally Closed (for stop button) See p. 9
12	AAA635H1	Contact Block, SPST, Normally Open (for start button) See p. 9

AAA26120C Retrofit Starting Device for 'O' Escalator

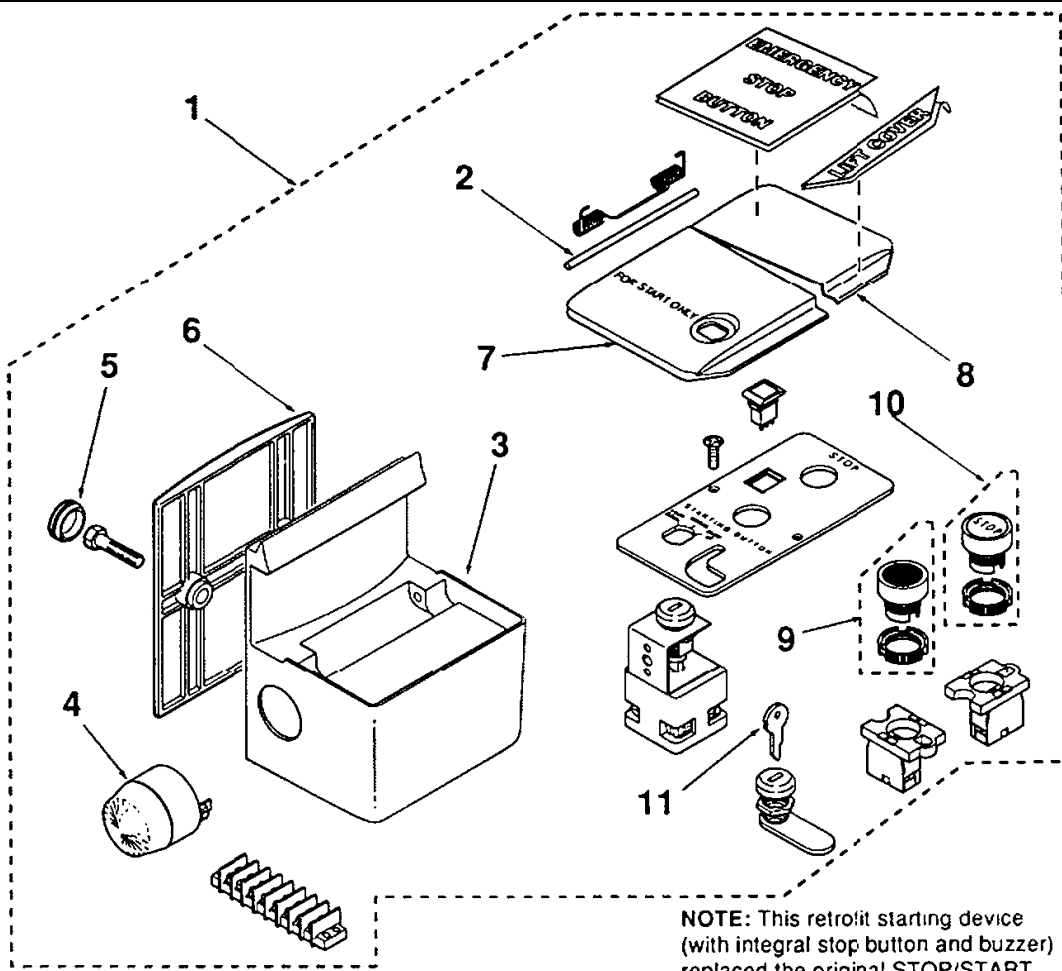
50-AAA26210A



W/O VINTAGE		
REF. NO.	PART OR ML	DESCRIPTION
1	AAA26210C1	Assembly, Retrofit Starting Device w/ Faceplate (Shown) (for 'O' Escalator)
	AAA26210C3	Assembly, Retrofit Starting Device Without Faceplate (for 'O' escalator)
2	AAA308PJ2	Box
3	AAA346ATS2	Cover, Clear
4	AAA147PE1	Faceplate, Mounting w/Cutout (Shown)
	AAA147PE2	Faceplate, w/o Cutout, (for covering location of old assembly)
5	AAA635H10	Button, Flush Head, Black See p. 9
6	AAA635H12	Button, Flush Head, Red See p. 9
7	AAA194AX1	Key
8	AAA102XC1	Label, Black Background, White Lettering
9	AAA6410AE1	Keyswitch Assembly, w/2 Keys
10	AAA00431AAC005	Lock Assembly w/2 Keys
11	AAA635H2	Contact Block, SPST, Normally Closed (for stop button) See p. 9
12	AAA635H1	Contact Block, SPST, Normally Open (for start button) See p. 9

50-AAA26210A

**AAA26120E Retrofit Starting Device
for 506SL Slimline Escalator & Escal-aire®**

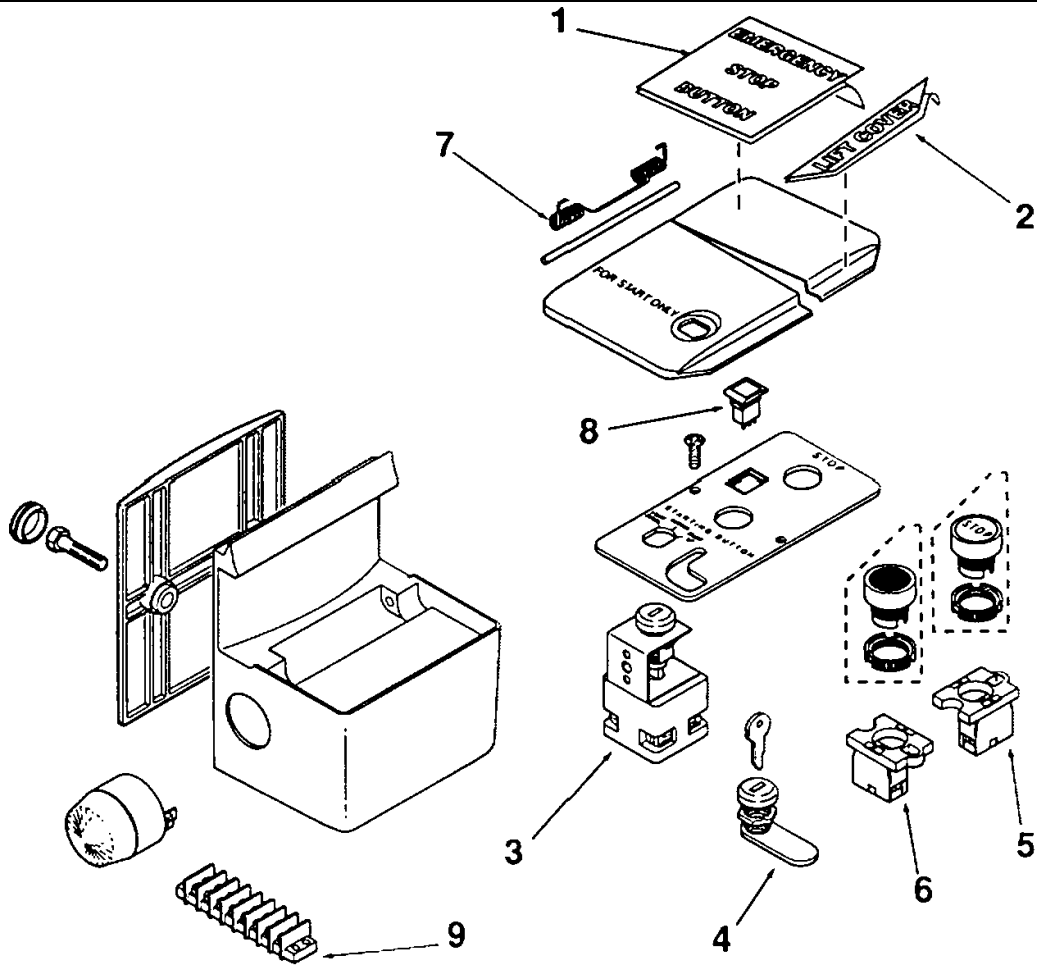


NOTE: This retrofit starting device (with integral stop button and buzzer) replaced the original STOP/START assembly. This retrofit device was required per revised New York City code.

W/O VINTAGE		
REF. NO.	PART OR ML	DESCRIPTION
1	AAA26210EI	Assembly, Retrofit Starting Device, (for '506SL')
2	GO502CV1	Axle
3	AAA308PP1	Box
4	GAA269V1	Buzzer
5	GO329AB1	Cap, Cover
6	GO147KB1	Cover, Appearance
7	AAA346ATZ2	Cover, Clear (over start keyswitch and button)
8	AAA346ATZ1	Cover, Clear (over stop button)
9	AAA635H10	Button, Flush Head, Black See p. 9
10	AAA635H11	Button, Flush Head, Red w/Text: STOP See p. 9
11	AAA194AX1	Key

Retrofit Starting Device, New York City Code Retrofit

50-AAA26210A

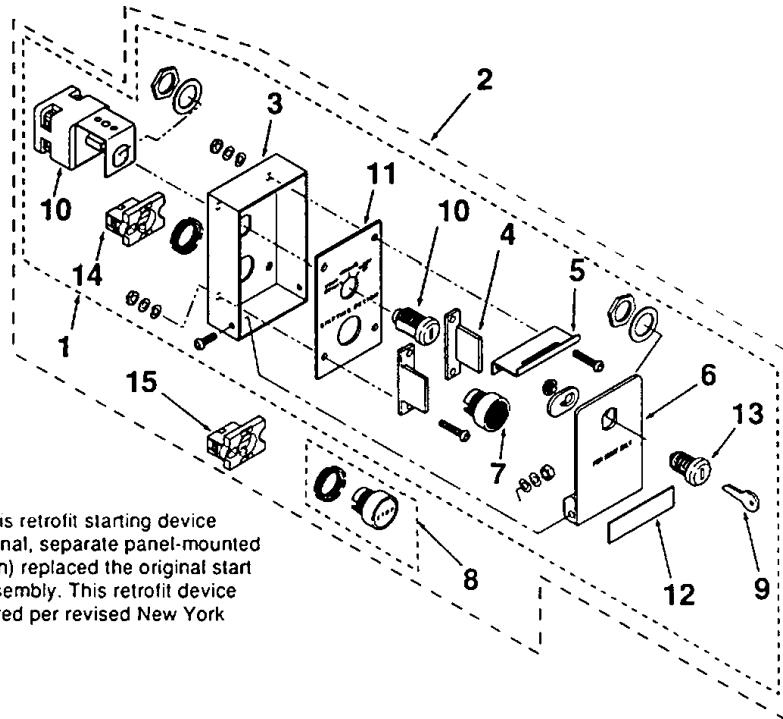


NOTE: This retrofit starting device (with integral stop button and buzzer) replaced the original emergency stop device. This retrofit device was required per revised New York City code.

W/O VINTAGE		
REF. NO.	PART OR ML	DESCRIPTION
1	GO102YM1	Label Marked: EMERGENCY STOP PUSH BUTTON
2	GO102YM2	Label Marked: LIFT Cover
3	AAA6410AE1	Keyswitch Assembly w/2 Keys
4	AAA00431AAC006	Lock Assembly w/2 Keys
5	AAA635H2	Contact Block, SPST, Normally Closed (for stop button) See p. 9
6	AAA635H1	Contact Block, SPST, Normally Open (for start button) See p. 9
7	GO94AM1	Spring
8	AAA635F2	Switch, Buzzer
9	303CX3	Terminal Block

50-AAA26210A

**Type CAA26210A Retrofit Starting Device for
RB-C, RB-D, J, 506, 510 & all Non-Otis
Escalators and Escal-Aires, RB “Crystal
Balustrade Escal-Aire**



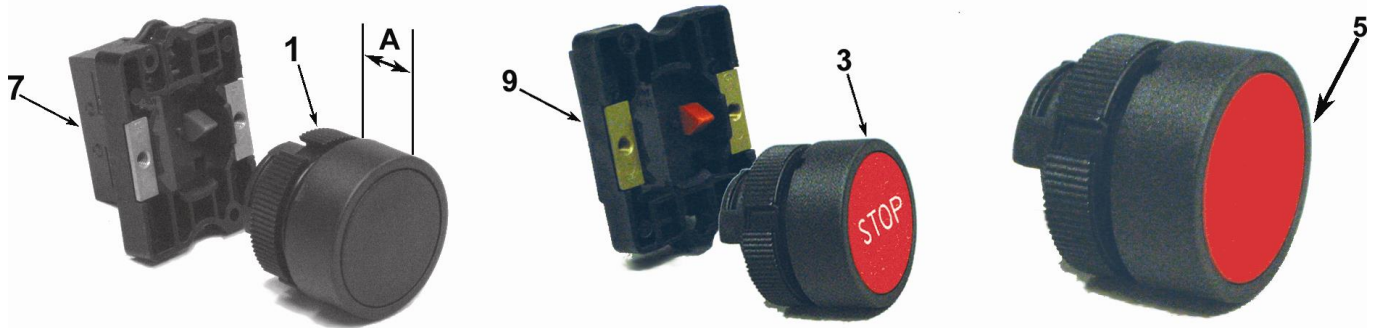
NOTE: This retrofit starting device (with optional, separate panel-mounted stop button) replaced the original start (/stop) assembly. This retrofit device was required per revised New York City code.

REF. NO.	W/O VINTAGE PART OR ML	DESCRIPTION
1	CAA26210A1	Assembly, Retrofit, Starting Device
2	2700AEM1	Kit, Retrofit, Starting Device w/Separate Panel-Mounted Stop Button Assembly. Kit Consists of: (1)Ref. 1 + (1) Ref. 8 + (1) Ref. 15
3	CAA308G1	Box
4	AAA283ALM1	Bracket
5	CAA316AE1	Bracket
6	CAA346C1	Cover, Clear
7	AAA635H10	Head Operator, Black, for START See p. 9
8	AAA635H11	Head Operator, Red, Button Marked: STOP See p. 9
9	AAA194AX1	Key
10	AAA6410AE1	Keyswitch Assembly w/2 Keys
11	CAA102N1	Label, Black Background, White Lettering
12	CAA102P1	Label, Black Background, No Lettering
13	AAA00431AAC005	Lock Assembly w/2 Keys
14	AAA635H1	Contact Block, SPST, Normally Open (for start button) See p. 9
15	AAA635H2	Contact Block, SPST, Normally Closed (for stop button) See p. 9

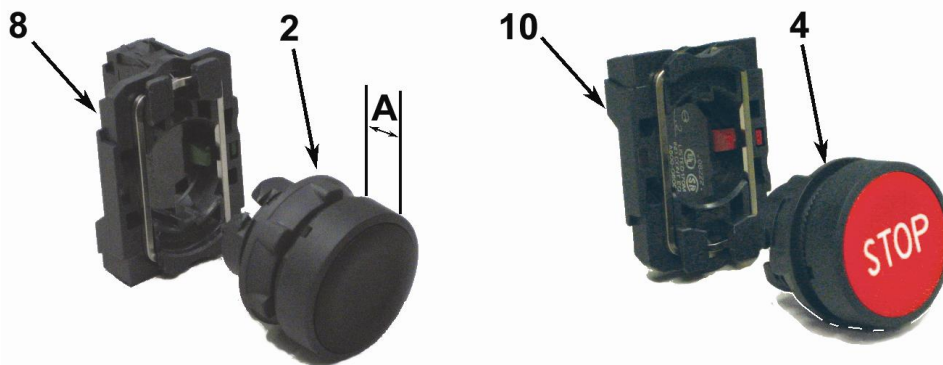
Buttons and Contact Blocks

50-AAA26210A

Original Parts



New Parts



W/O VINTAGE

ORIGINAL PART No. See NOTE	MAT'L. COLOR, DIM A	REF. NO.		NEW PART No.	MAT'L. COLOR, DIM A	DESCRIPTION
		←	→			
AAA635H10	Black 7/16 in	1	2	AAA635H15	Dark Gray 5/16 in.	Button, Flush Head, Black
AAA635H11		3	4	AAA635H16		Button, Flush Head, Red w/Text: STOP
AAA635H12		5	6*	AAA635H17		Button, Flush Head, Red
AAA635H1		7	8	AAA635H13		Contact Block, SPST, Normally Open (for start button)
AAA635H2		9	10	AAA635H14		Contact Block, SPST, Normally Closed (for stop button)

NOTE: New buttons and contact blocks are not backward compatible. Ordering system will indicate original parts as "restricted" as an alert. When original part stock is depleted, replacement part and its mating part need to be ordered.

* Not Shown