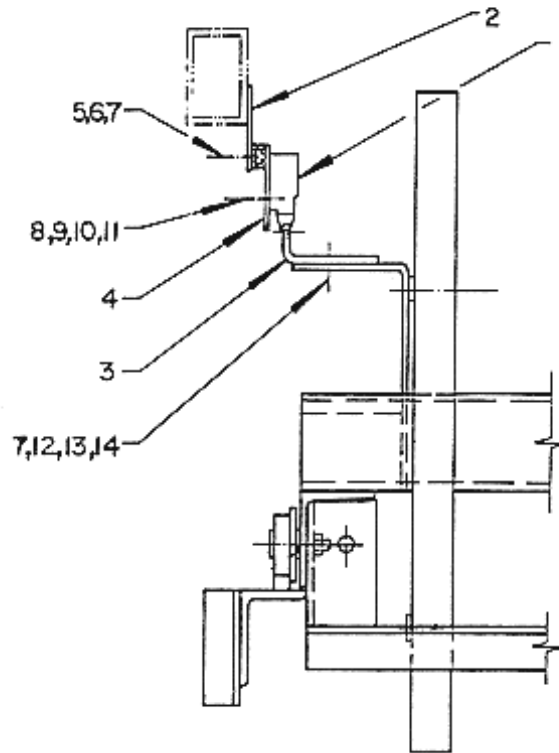


Unpublished Work - © Otis Elevator Company. Any unauthorized reproduction, disclosure, or distribution of copies or content by any person of any portion of this work may be a violation of Copyright Law of the United States of America. All rights reserved.

Page 1 - BROKEN STEP CHAIN DEVICE BSCL/BSCR

December 1990



SPL 50-BAA26160C - Safeties Device - K2/K3 - 30 - NAO

Page 2

| REF. NUM. | DESCRIPTION | PART OR ML |
|----------------------|-----------------------------|-------------------|
| 1 | LIMIT SWITCH | BAA177G2 |
| 2 | PLATE | BAA343D1 |
| 3 | ANGLE | BAA272AV1 |
| 4 | BRACKET | BAA316GL1 |
| 5 | BOLT | BAA59AH1 |
| 6 | SPRING WASHER B6 DIN 127 | 03PG180800 |
| 7 | NUT FS M6 DIN 934 | 43SD182200 |
| 8 | BOLT FC M4x40 DIN84 | 40CH181550 |
| 9 | NUT FS M4 DIN 934 | 43SD182000 |
| 10 | WASHER A4.3 DIN 125 | 03PB181200 |
| 11 | SAFETY WASHER A4.3 DIN 6798 | 03SA180400 |
| 12 | BOLT CS M6x35 DIN933 | 40SD184830 |
| 13 | WASHER FE A6.4 DIN 125 | 03PB181400 |
| 14 | SAFETY WASHER A6.4 DIN 6798 | 03SA181300 |