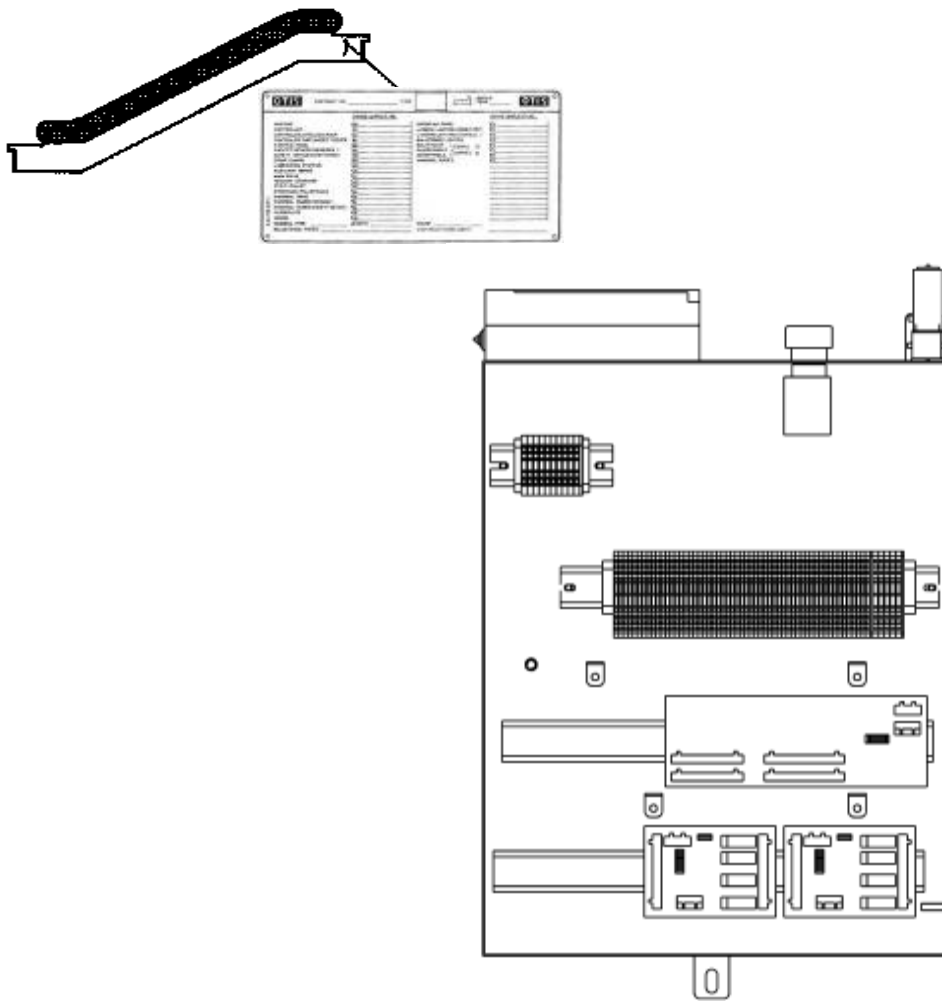


# 508NCE/512NCE Escalator Safety Devices, Switches, Start-Stop Station

Spare Parts Leaflet

50-DAA26204LP

Sep. 12, 2017 / Page 1 of 15



Unpublished Work—© Otis Elevator Co.

**OTIS**

**Safety First!**

**ESCALATOR ENGINEERING**  
Otis Elevator Company  
SIT GUANGZHOU

**Leaflet Description**

**508NCE/512NCE\_ANSI Escalator Safety Device**  
 DAA26204LP REPLACES DAA26204F

**Leaflet Revisions**

<b>Date Revised</b>	<b>Subject Matter Expert</b>	<b>Reason for Revision</b>
May 11, 2009	Zhou, Wei	Original document
Sep. 23, 2009	Liang, Ye	Key (DAA194K1) added on page 7.
Oct. 30, 2009	Liang Ye	GAA177KR1 & GAA233Z1 added on page 5. AAA629AG11 replaced GAA629AC2 & AAA629AG12 replaced GAA629AC3 on page 8.
Nov. 30, 2009	Zhou Wei	SPL code 10 changed to 50. GBA26803A2 changed to GBA26803A1 and GCA26803B2 changed to GCA26803B1 on page 3. Safety switch codes are added on pages 4-7. DAA174ADE71 added on page 10.
Mar. 05, 2010	Liang Ye	Broken main drive chain switch changed to GBA177HA1 on page 4; AAA608D22 added on page 10.
May 20, 2011	Guo, Huajia	Ref. no. 33 added.
Jan 13, 2013	Deng, Wenke	1. Add Part No. GAA177FD5 for Broken main drive chain switch on page 14. 2. Part No. for Emergency stop box were changed to DAA308DQ1/2 on page 8 3. Page 12: add GBA177HL1/2 for MMS control device. 4. Page 13: add GAA177GZ1 for dual Dual Piezo Electric Contact Mat. 5. Page GOA177AM3 for auxiliary brake.
Dec. 30, 2013	Deng, Wenke	1. Add REF.No. 11a & 11b on page 8, and REF. No. 44 & 45 on page 15.
Oct. 15, 2015	Guo, Huajia	1. DAA26220CR1/2 replaces GAA26220BV16.
April 12, 2017	Guo, Huajia	1. Ref. No. 8A: DAA608D2 changed to DAA608L3.
April 30, 2017	Guo, Huajia	1. Ref. No. 46/47: DAA174CCJ3/4 added.
Sep. 12, 2017	Guo, Huajia	1. Ref. No. 42: GAA177FD5 changed to DAA177FR1; 2. Ref. No. 43: DAA385NNY1 changed to XAA26220DE3.

**Related Drawings**

<b>Drawing No.</b>	<b>Title</b>	<b>Drawing No.</b>	<b>Title</b>
DAA27076LP	Safety Device (ODS)	GAA27076FW	Attached parts (ODS)

---

## Related Documents

Document ID	Title
ODS DAA27076LS	Safety device – mechanical part

## Subject Matter Expert

Name	Department
Guo, Huajia	SIT-GUANGZHOU

## About Spare Parts Leaflets...

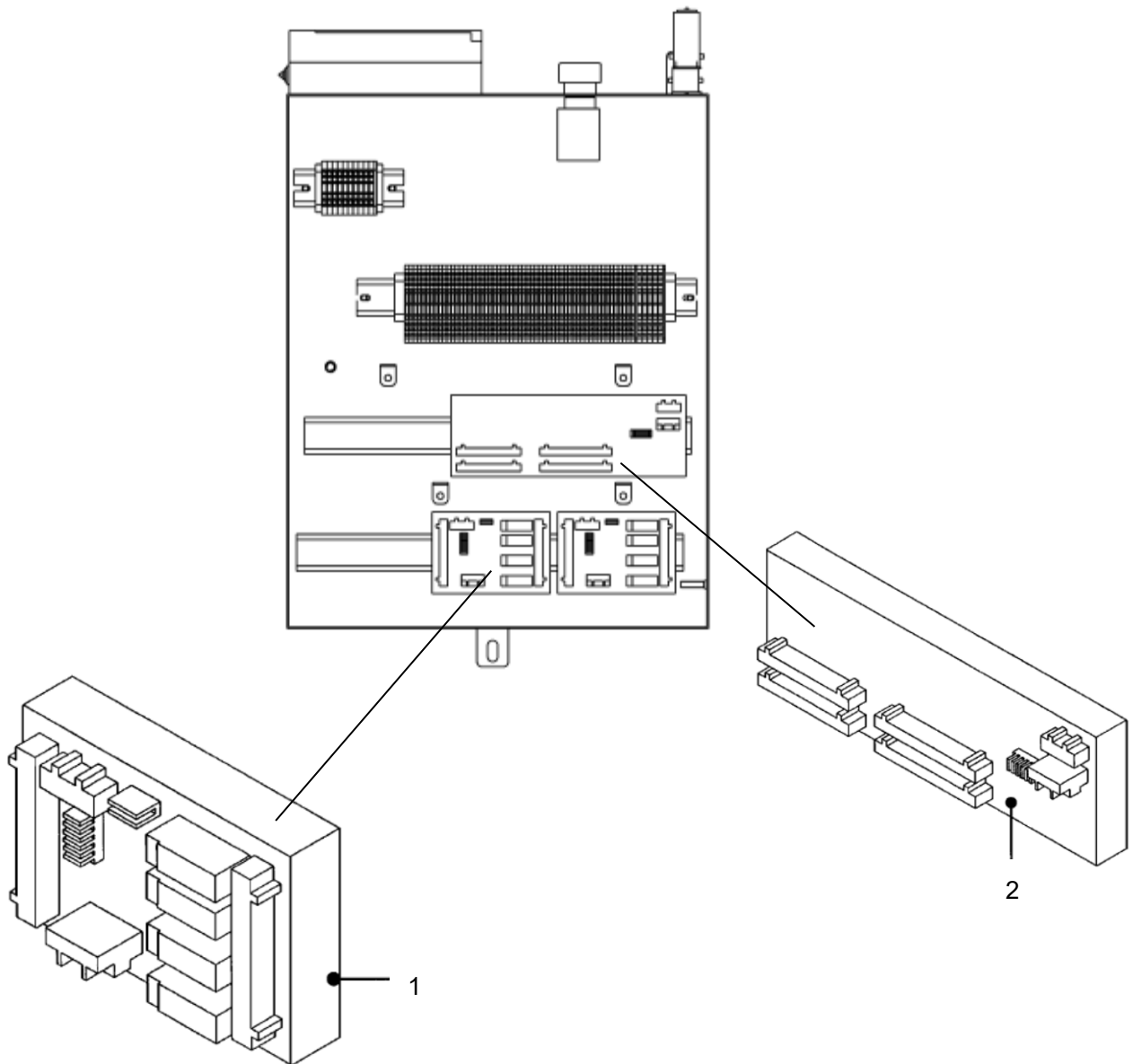
This document lists the lowest replaceable units (LRUs) for the standard version of the product. The LRUs are chosen by a team of Otis associates representing engineering and manufacturing.

While goal of this document is to make parts identification as easy as possible, the document cannot be all-inclusive. Elevator and escalator contracts classified as “special” or “custom” are not addressed here. For such contracts, please refer to specified information, the contract folder, TIPs, Field Education Articles, Construction Letters, etc. for further information.

If you have any suggestions about this document, please contact the subject matter expert listed on this page.

**508NCE/512NCE Escalator  
Safety Device**

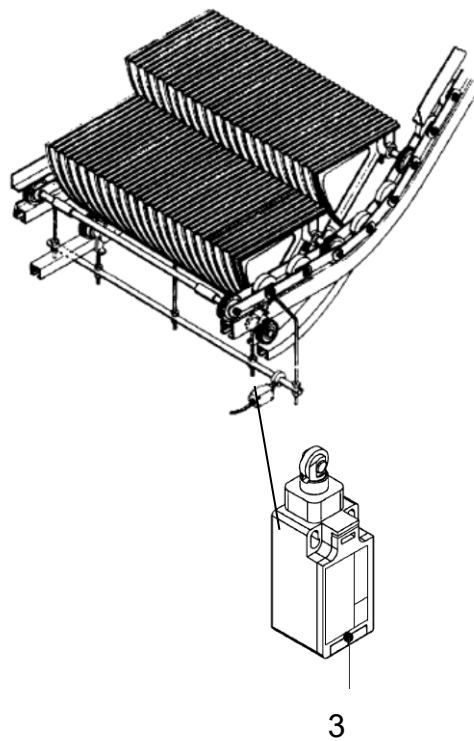
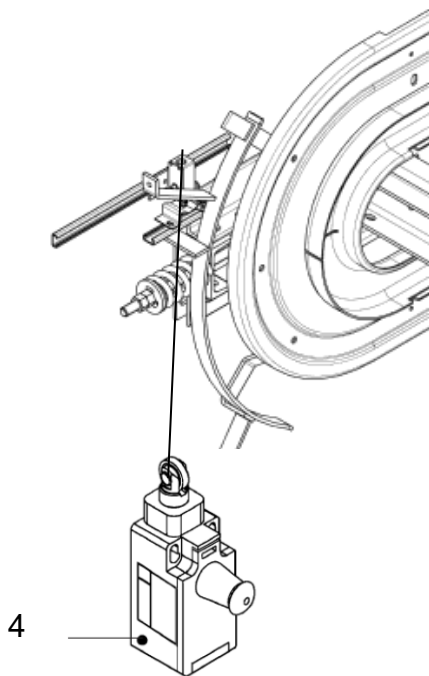
**50-DAA26204LP**



DAA26204LP		
REF. No.	PART No. OR M.L.	DESCRIPTION
1	GBA26803A1	RS4R BOARD
2	GCA26803B1	RSFF BOARD

**508NCE/512NCE Escalator  
Safety Device**

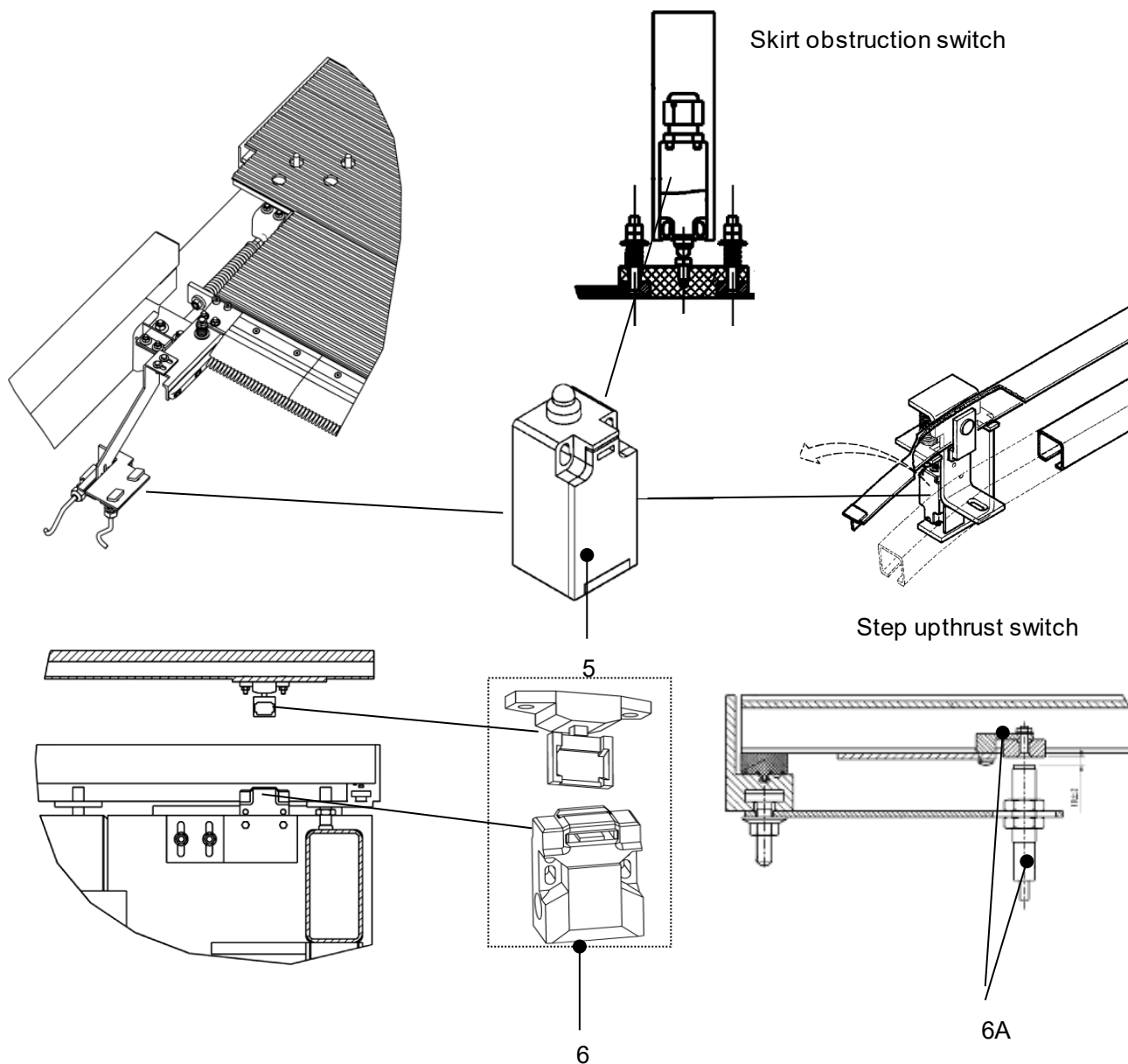
**50-DAA26204LP**



REF. No.	PART No. OR M.L.	DESCRIPTION
3	GBA177HK1	Broken step & chain wheel switch (S10, S20)
4	GBA177HL2	Broken step chain switch (S14, S15)

# 508NCE/512NCE Escalator Safety Device

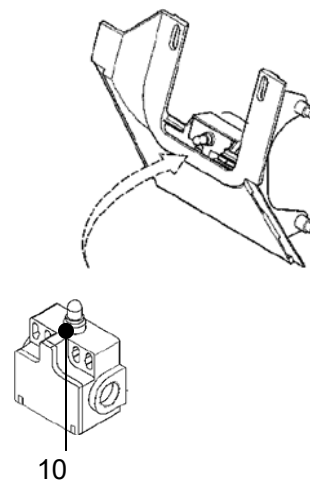
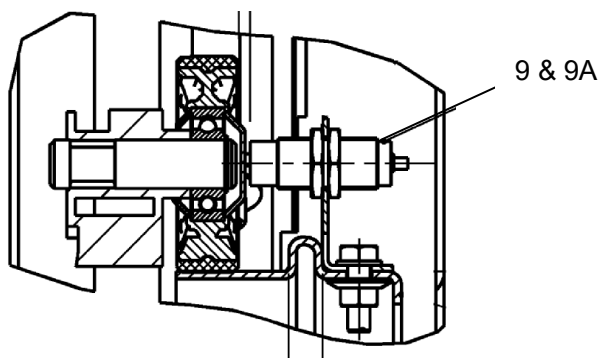
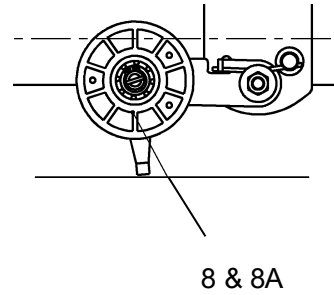
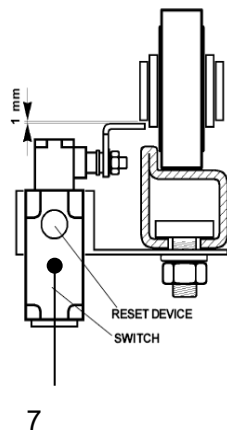
## 50-DAA26204LP



DAA26204LP		
REF. No.	PART No. OR M.L.	DESCRIPTION
5	GBA177HA1	Comb plate safety switch (S1, S2, S16, S17, S1.1, S2.1, S16.1, S17.1)
		Skirt obstruction switch (S3, S4, S18, S19)
		Step upstrust switch (S12, S13)
6	GAA177KH1	Floor plate safety device (S5, S6)
6A	GAA177KR1	Floor plate safety magnetic switch(S5, S6)
	GAA233Z1	Floor plate safety magnetic switch accessories--- magnet

**508NCE/512NCE Escalator  
Safety Device**

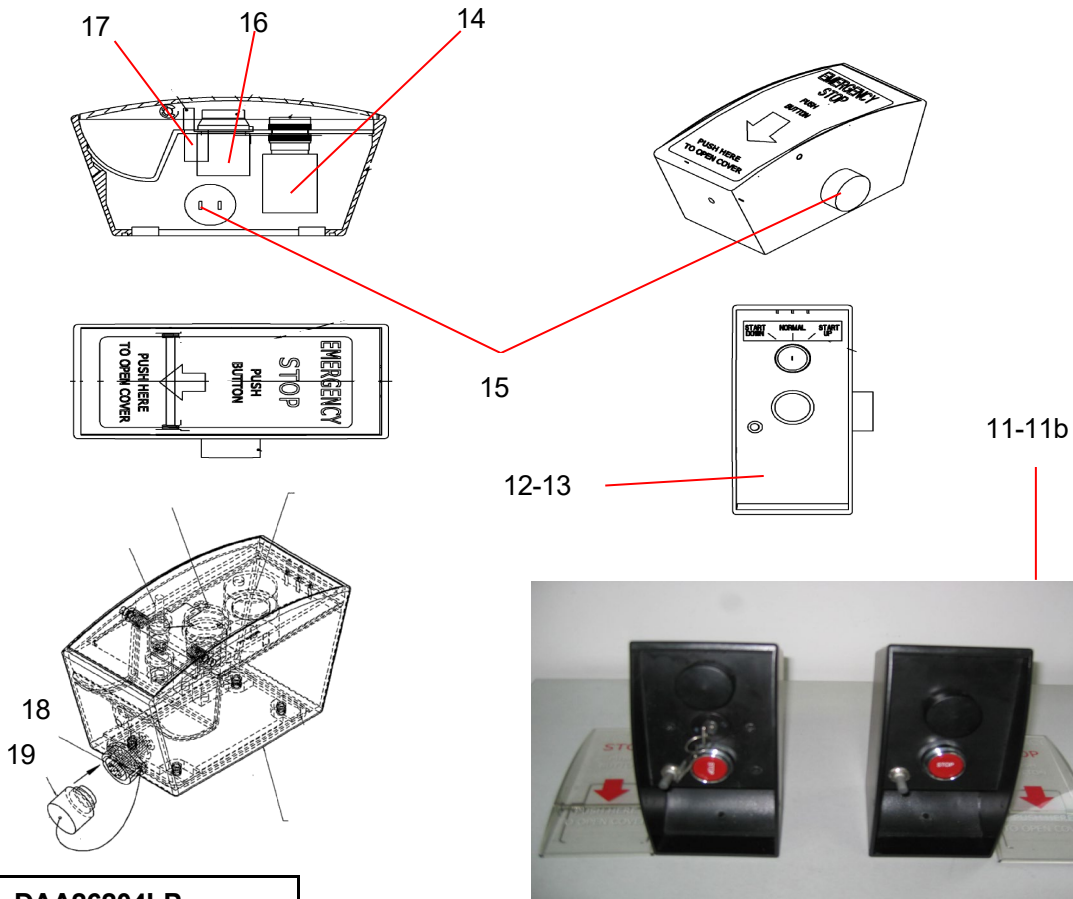
**50-DAA26204LP**



REF. No.	DAA26204LP PART No. OR M.L.	DESCRIPTION
7	GBA177HM1	Step chain wheel safety switch (S94, S95)
8	DAA608A3	Handrail speed monitoring device (B8, B9) for ECS-ANSI control system
8A	DAA608D2	Handrail speed monitoring device (B8, B9) for GCS-ANSI control system
	DAA608L3	
9	DAA608A2	Missing step device sensor (B25, B26) for ECS-ANSI control system
9A	DAA608B3	Missing step device sensor (B25, B26) for GCS-ANSI control system
10	GCA177GF1	Handrail entry safety switch without reset button (S21, S22, S23, S24)

# 508NCE/512NCE Escalator Safety Device

**50-DAA26204LP**

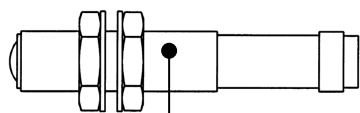


DAA26204LP		
REF. No.	PART No. OR M.L.	DESCRIPTION
11	GAA26220BV16	Emergency stop box, for NYC
	DAA26220CR1	Emergency stop box, for NYC, upper landing
	DAA26220CR2	Emergency stop box, for NYC, lower landing
11a	DAA26220NNV21	Emergency stop box with hole for DT connector, upper landing
11b	DAA26220NNV11	Emergency stop box, lower landing
12	DAA308DQ1	Emergency stop box with hole for DT connector assembly, upper landing Including these components: DAA177NPJ1, DAA194K1, GAA269V1, DAA177NPT1, DAA177NPS1, label on cover.
13	DAA308DQ2	Emergency stop box assembly, lower landing. Including these components: DAA177NPJ1, DAA194K1, GAA269V1, DAA177NPT1, DAA177NPS1, label on cover.
14	DAA177NPJ1	Key switch & key (S63, S63.1)
	DAA194K1	Key
15	GAA269V1	Buzzer
16	DAA177NPT1	Stop button (S25, S26)
17	DAA177NPS1	Cover switch
18	GAA176HN1	DT connector
19	GAA176DS1	DT connector cover

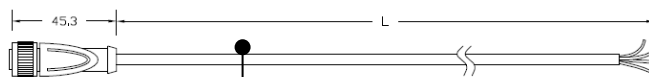


# 508NCE/512NCE Escalator Safety Device

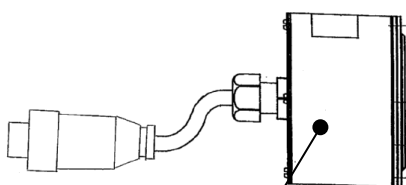
## 50-DAA26204LP



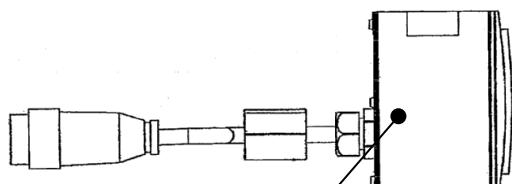
20, 21



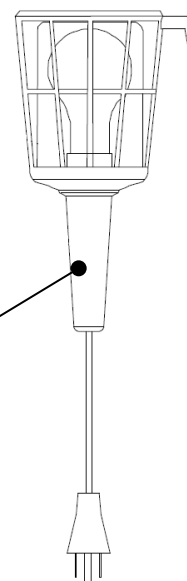
20A



22



23

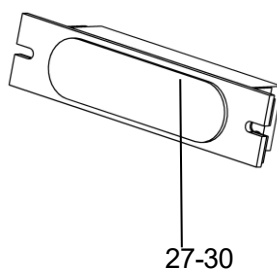
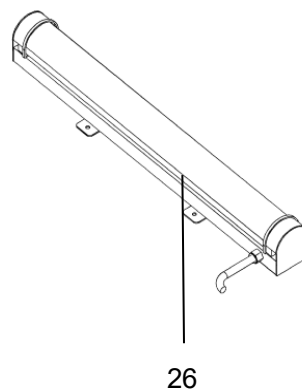
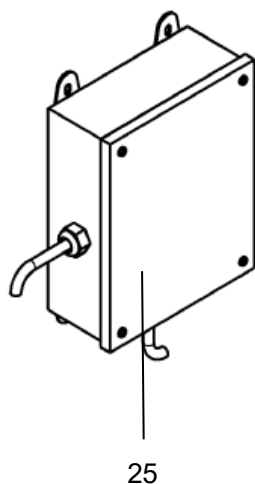


24

DAA26204LP		
REF. No.	PART No. OR M.L.	DESCRIPTION
20	GAA629AC2 ↷	OPTO transmitter for ETA-PLUS
	AAA629AG11 ↷	
20A	DAA174AKE2	Cable for ETA-PLUS sensor
21	GAA629AC3 ↷	OPTO receiver for ETA-PLUS
	AAA629AG12 ↷	
22	DAA424NPE2	Traffic flow light for glass balustrade
23	DAA424E2	Traffic flow light for opaque balustrade
24	DAA424Q3	Truss interior lighting

# 508NCE/512NCE Escalator Safety Device

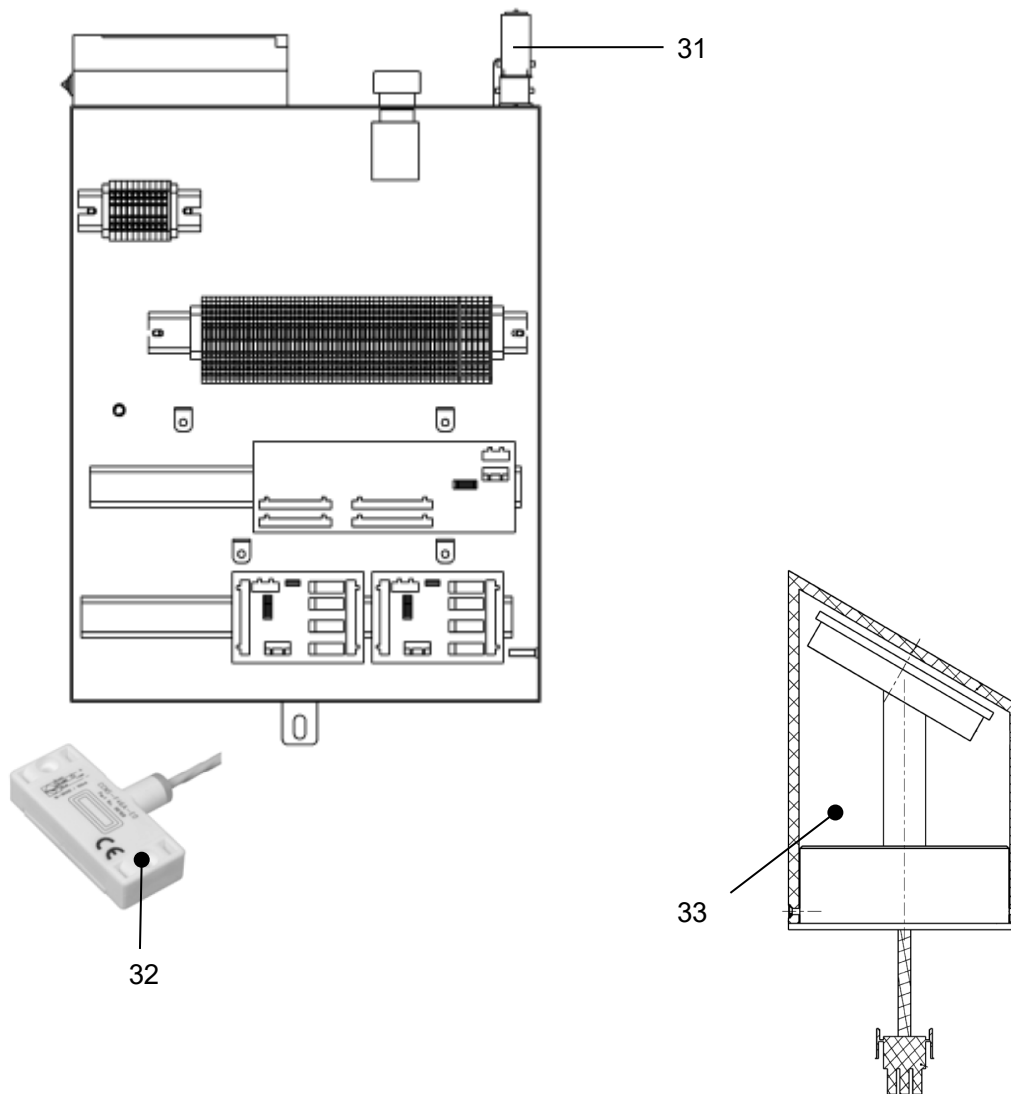
**50-DAA26204LP**



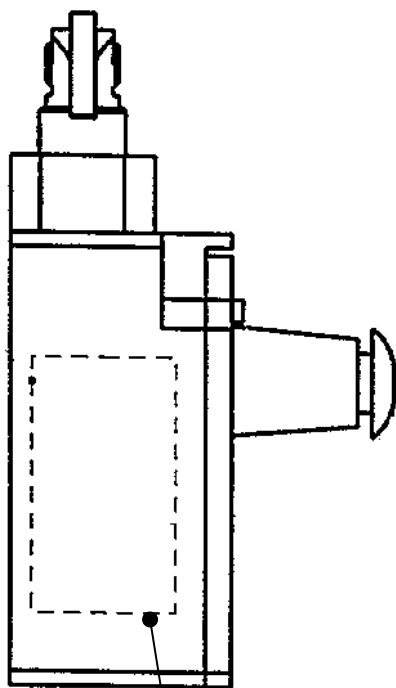
DAA26204LP		
REF. No.	PART No. OR M.L.	DESCRIPTION
25	DAA26220AD2	Power supply box for comb lighting and under step lighting
26	DAA424P11	Lamp for under step lighting
27	DAA424H21	Lamp for comb lighting, green
28	DAA424H22	Lamp for comb lighting, blue
29	DAA424H23	Lamp for comb lighting, orange
30	DAA424H24	Lamp for comb lighting, white

**508NCE/512NCE Escalator  
Safety Device**

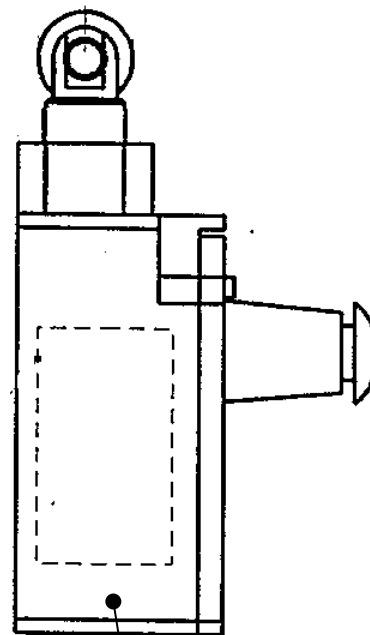
**50-DAA26204LP**



REF. No.	PART No. OR M.L.	DESCRIPTION
31	DAA174ADE71	Inspection blind plug assembly
32	AAA608D22	Flooding Level Sensor(B17)
33	DAA424V2	Traffic flow light



34

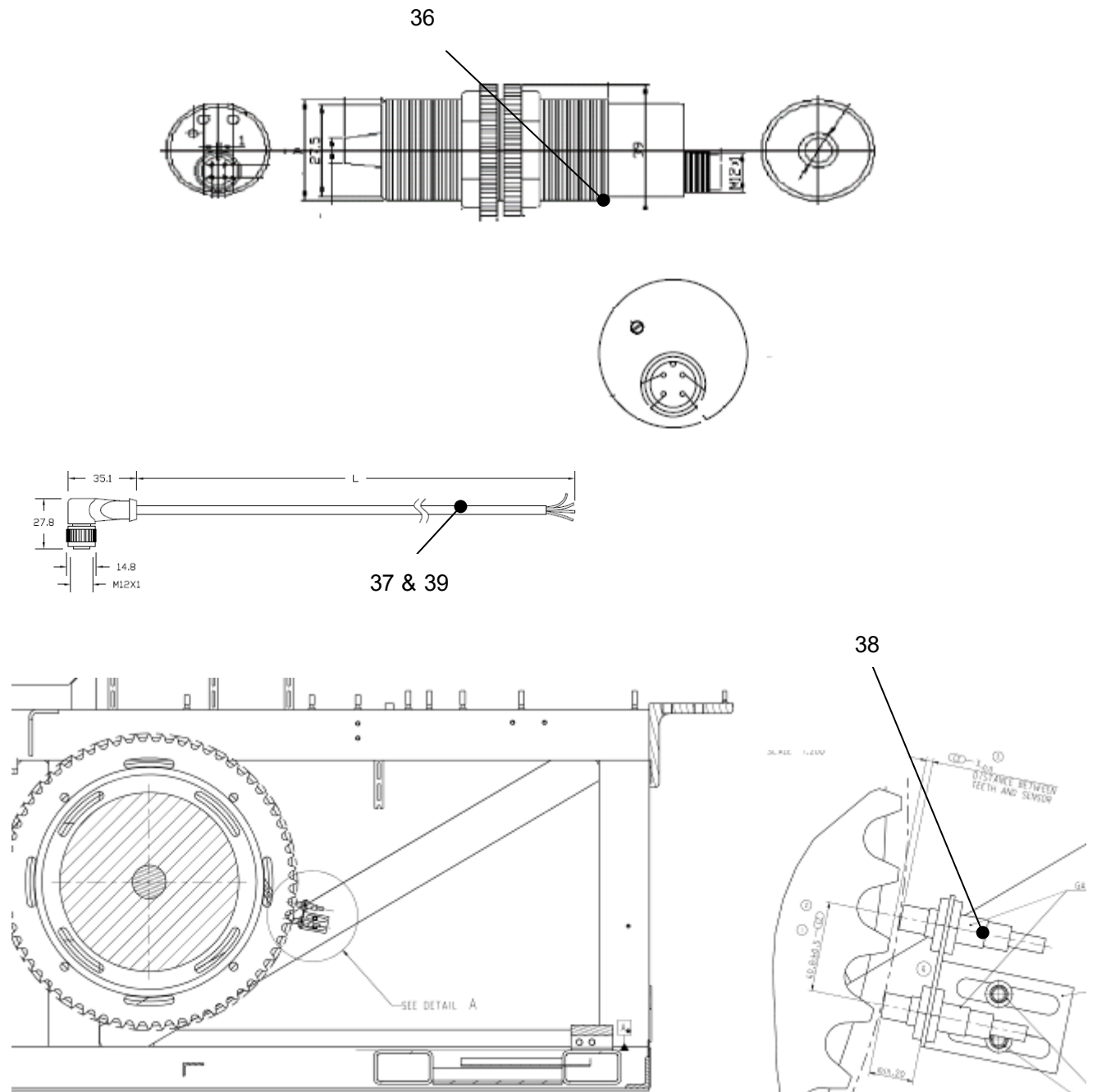


35

DAA26204LP		
REF. No.	PART No. OR M.L.	DESCRIPTION
34	GBA177HL1	Machine movement switch (S28.1)
35	GBA177HL2	Machine movement switch (S28.1)

**508NCE/512NCE Escalator  
Safety Device**

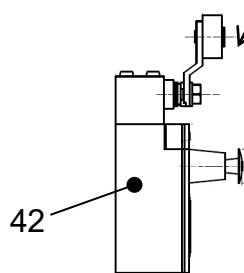
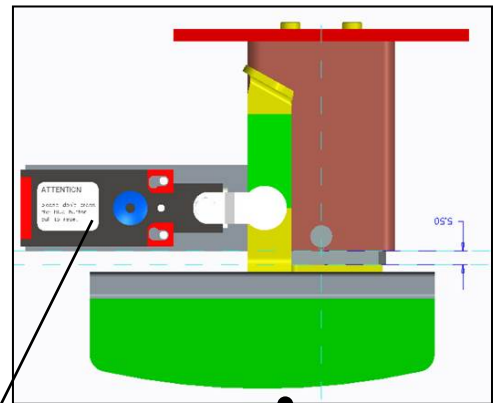
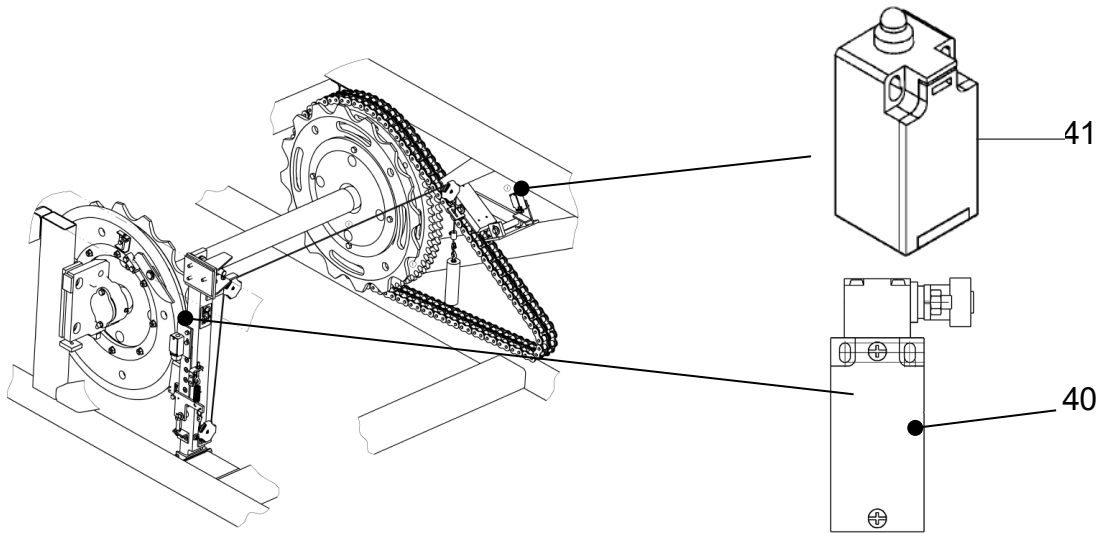
**50-DAA26204LP**



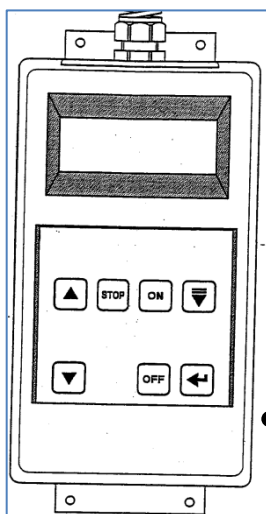
REF. No.	PART No. OR M.L.	DESCRIPTION
	<b>DAA26204LP</b>	
36	GAA177GZ1	Piezo Electric Contact Mat
37	DAA174AKE5	Cable for Piezo Electric Contact Mat
38	DAA608C3	STEP SPEED SENSOR (CONTRINEX DW-AS-633-M12)
39	DAA174AKE3	Cable for STEP SPEED SENSOR (CONTRINEX DW-AS-633-M12)

**508NCE/512NCE Escalator  
Safety Device**

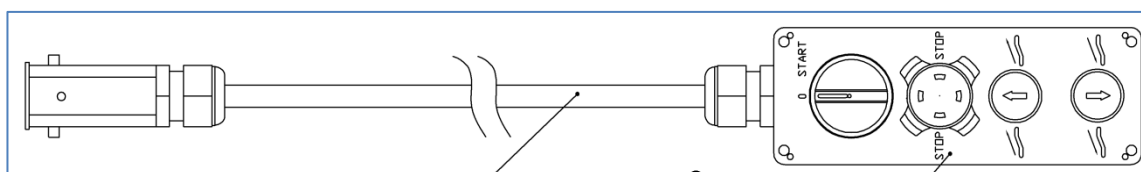
**50-DAA26204LP**



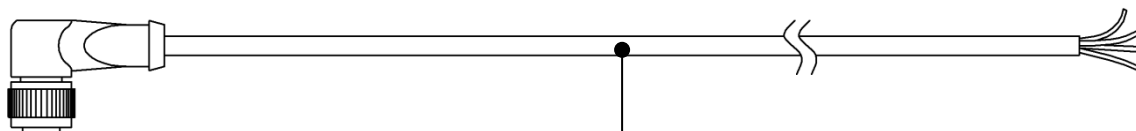
DAA26204LP		
REF. No.	PART No. OR M.L.	DESCRIPTION
40	GOA177AM3	Auxiliary brake switch (S53)
41	GBA177HA1	Broken main drive chain switch (S28) for ECS-ANSI control system
42	GAA177FD5	Broken main drive chain switch (S28) for GCS-ANSI control system
	DAA177FR1	Broken main drive chain switch
43	DAA385NNY1	Broken main drive chain tension box for GCS-ANSI control system
	XAA26220DE3	Broken chain device assembly



44



45



46-47

REF. No.	PART No. OR M.L.	DESCRIPTION
	<b>DAA26204LP</b>	
44	GAA27000A1	Diagnostic tool
45	DAA26220BT1	Inspection box
46	DAA174CCJ3	Cable, for Missing Step Device, lower landing w/o truss extension
47	DAA174CCJ4	Cable, for Missing Step Device, lower landing w/ truss extension; and for Handrail Speed Monitoring Device.