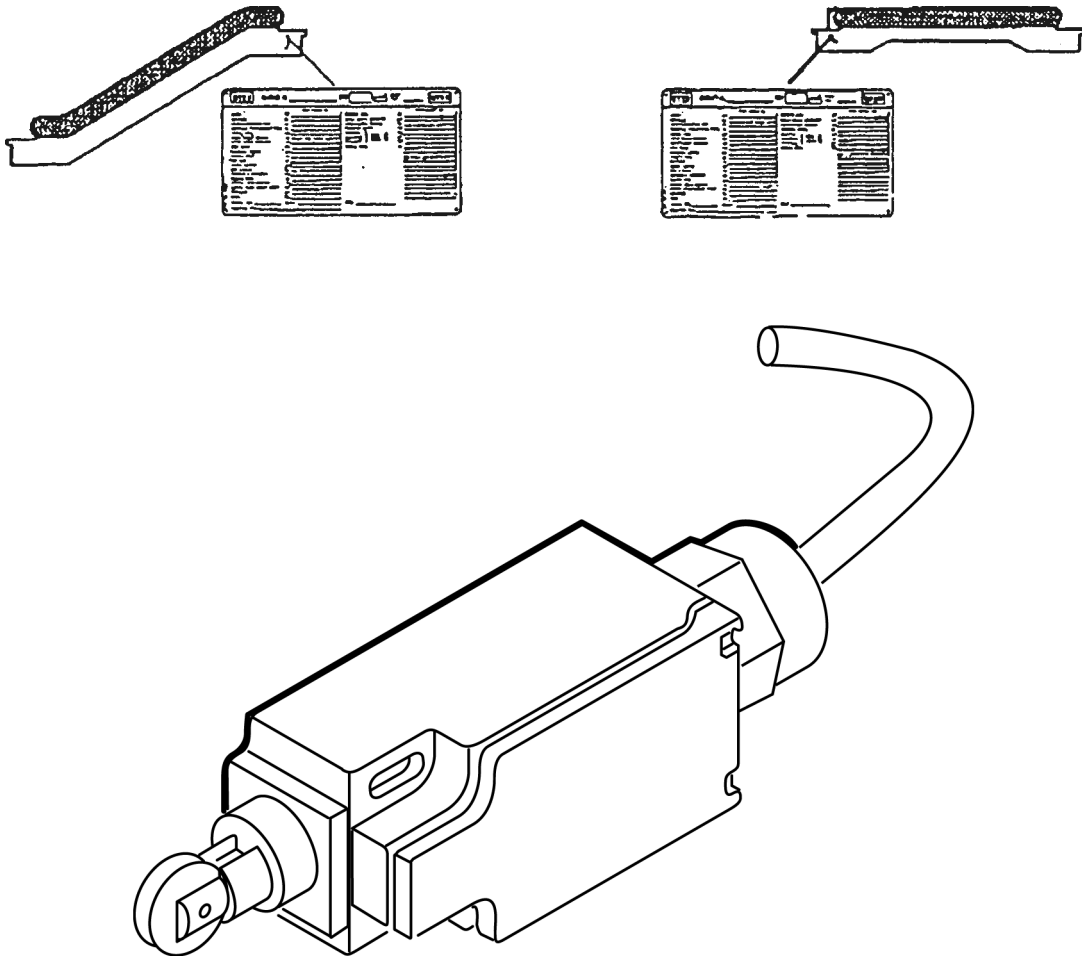


**Escalator/
Trav-O-Lator®
Safety Devices**

Spare Parts Leaflet
50-G0177AG
09/30/2004 / Page 1 of 33



Unpublished Work—© Otis Elevator Co.; 2002

OTIS

Safety First!

Otis GmbH & Co OHG
SIT Stadthagen
ENGINEERING

Leaflet Description

This SPL shows safety devices for both Escalators and Trav-O-Lators®.

Leaflet Revisions

Date Revised	Subject Matter Expert	Reason for Revision
Sept. 30, 2004	Matthias Steffen	Numbering of pages changed. Floor plate safety switch added (see page 33)

Related Drawings

Drawing No.	Title	Drawing No.	Title
None	---		

Related Documents

Document ID	Title
Type & No.	Title

Subject Matter Expert

Name	Department
Matthias Steffen	Engineering Stadthagen, Germany

About Spare Parts Leaflets...

This document lists the lowest replaceable units (LRUs) for the standard version of the product. The LRUs are chosen by a team of Otis associates representing engineering and manufacturing.

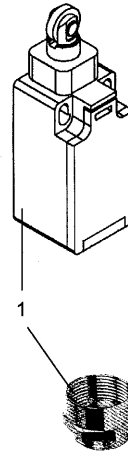
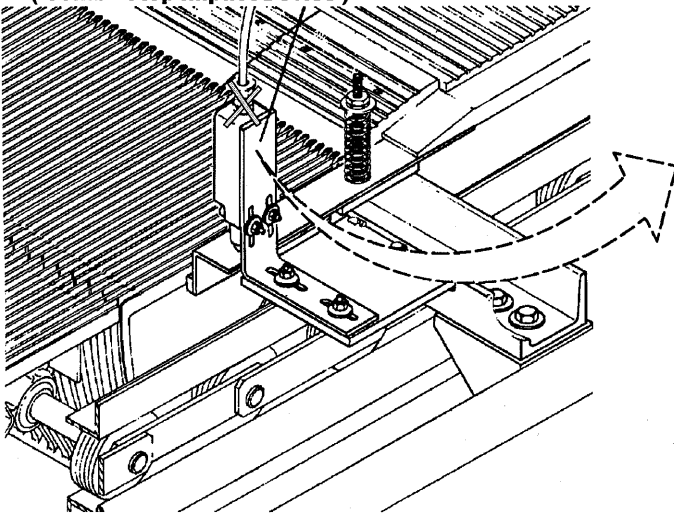
While goal of this document is to make parts identification as easy as possible, the document cannot be all-inclusive. Elevator and escalator contracts classified as "special" or "custom" are not addressed here. For such contracts, please refer to specified information, the contract folder, TIPs, Field Education Articles, Construction Letters, etc. for further information.

If you have any suggestions about this document, please contact the subject matter expert listed on this page.

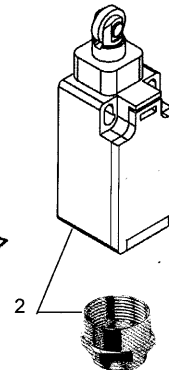
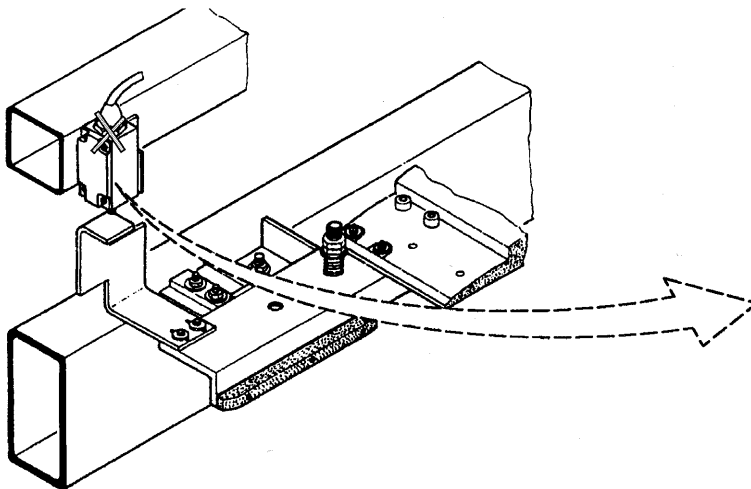
Comb Plate Contact

50-GO177AG

**Comb Plate Contact
(Comb - Step Impact Device)**



**Comb Plate Contact
(Comb - Step Impact Device)
506SL**

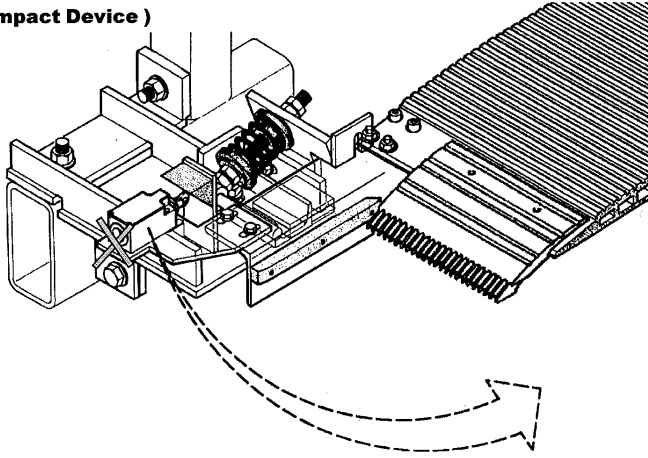


VINTAGE		
REF. No.	PART No.	DESCRIPTION
1-2	GO177AG1	Switch
	GO177BX1	
	GAA177HK1	
	GBA177HK1	
	GAA381A3	
	GAA381H1	Adapter (PG11 – M20x1,5)

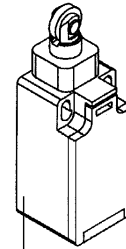
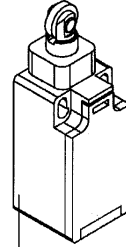
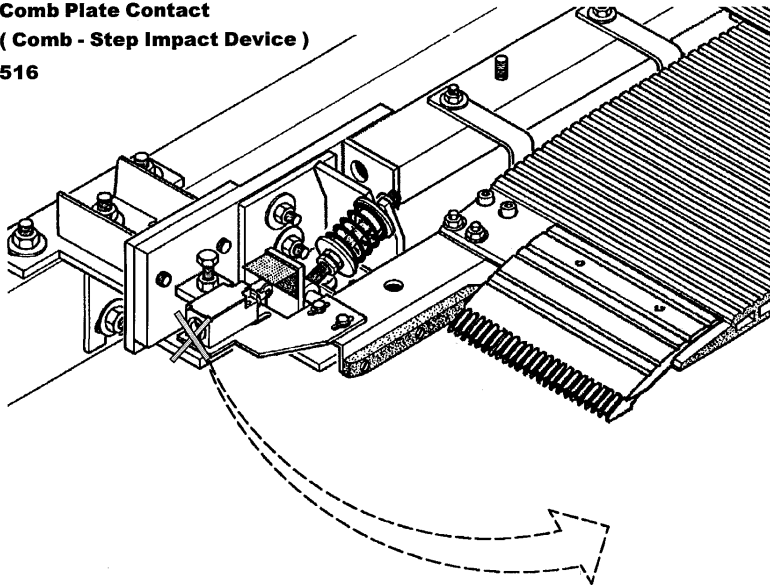
50-GO177AG

Comb Plate Contact

**Comb Plate Contact
(Comb - Step Impact Device)
510**



**Comb Plate Contact
(Comb - Step Impact Device)
516**



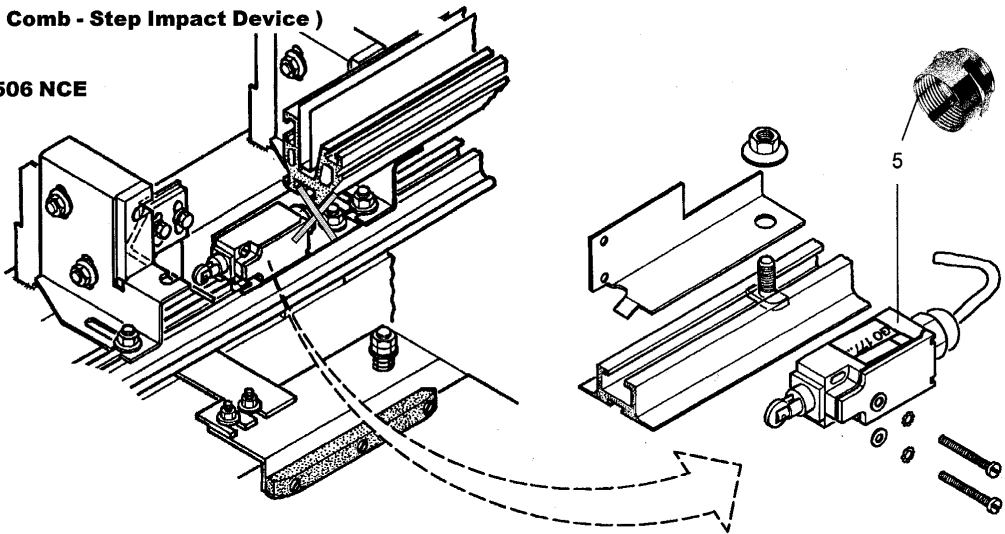
VINTAGE		
REF. No.	PART No.	DESCRIPTION
3-4	GO177AG1	Switch
	GO177BX1	
	GAA177HK1	
	GBA177HK1	
	GAA381A3	
	GAA381H1	Adapter (PG11 – M20x1,5)

Comb Plate Contact

50-GO177AG

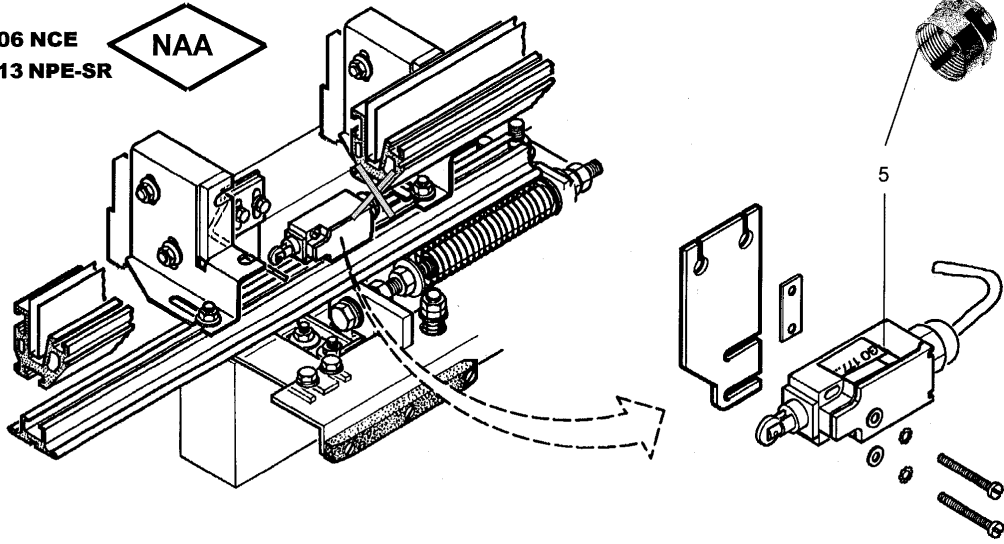
**Comb Plate Contact
(Comb - Step Impact Device)**

506 NCE



**Comb Plate Contact
(Comb - Step Impact Device)**

506 NCE
513 NPE-SR



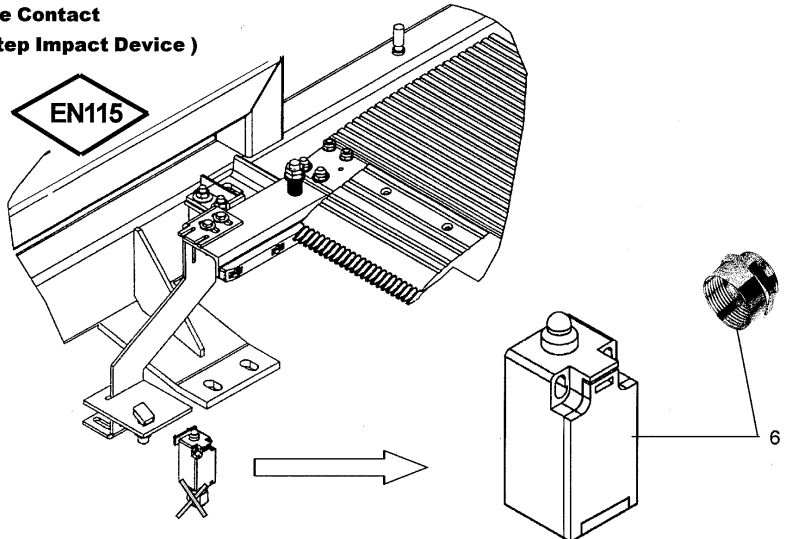
VINTAGE		
REF. No.	PART No.	DESCRIPTION
5	GO177AG1	Switch
	GAA177HK1	
	GBA177HK1	
	GAA381A3	Cable gland (M20x1,5)
	GAA381H1	Adapter (PG11 – M20x1,5)

Comb Plate Contact

50-G0177AG

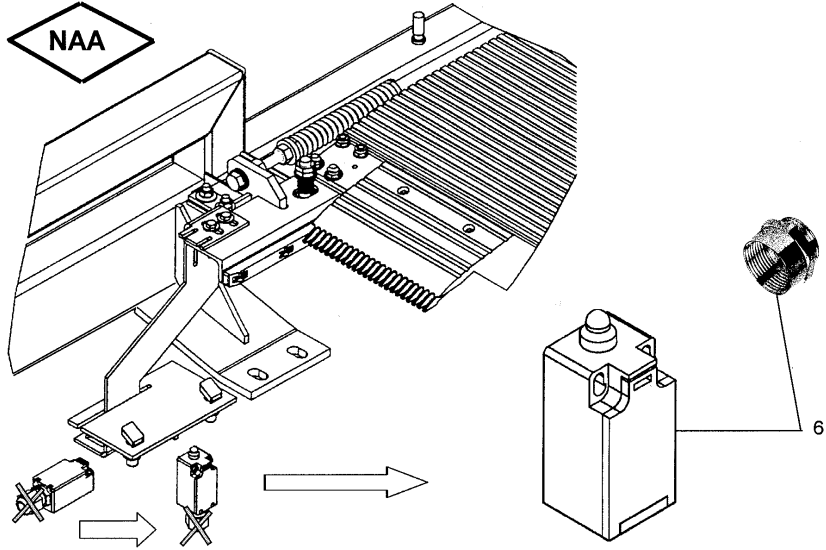
**Comb Plate Contact
(Comb - Step Impact Device)**

506 NCE



**Comb Plate Contact
(Comb - Step Impact Device)**

506 NCE

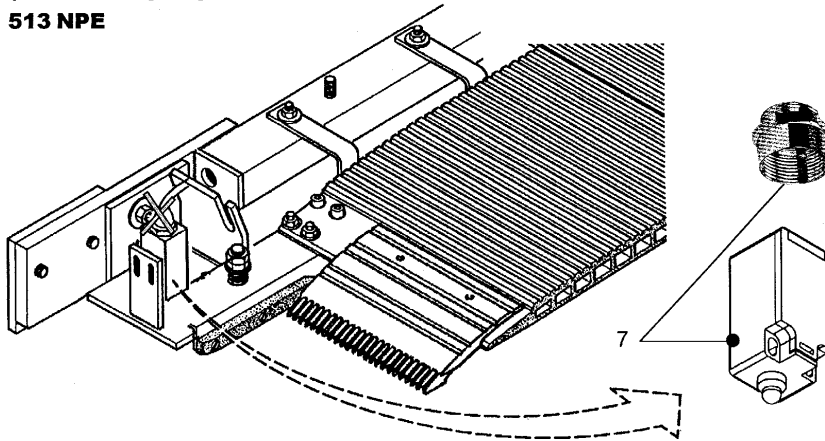


VINTAGE		
REF. No.	PART No.	DESCRIPTION
6	GAA177HA1	Switch
	GBA177HA1	
	GAA381A3	Cable gland (M20x1,5)
	GAA381H1	Adapter (PG11 – M20x1,5)

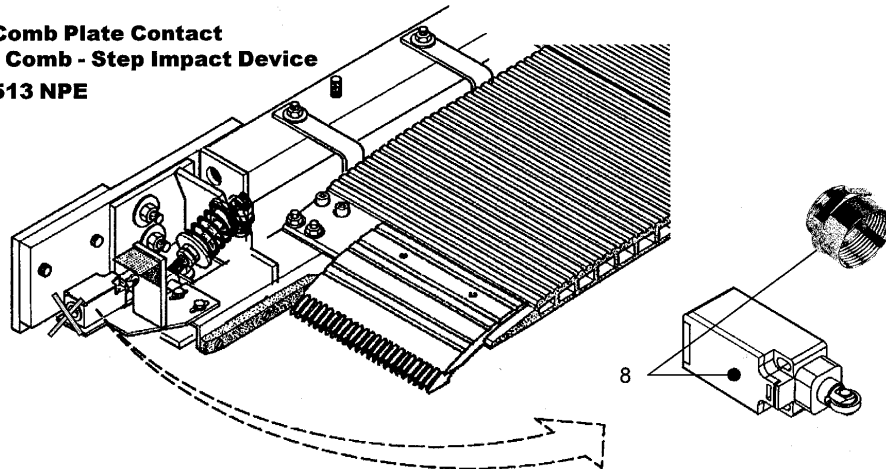
Comb Plate Contact

50-GO177AG

**Comb Plate Contact
(Comb - Step Impact Device
513 NPE**



**Comb Plate Contact
(Comb - Step Impact Device
513 NPE**

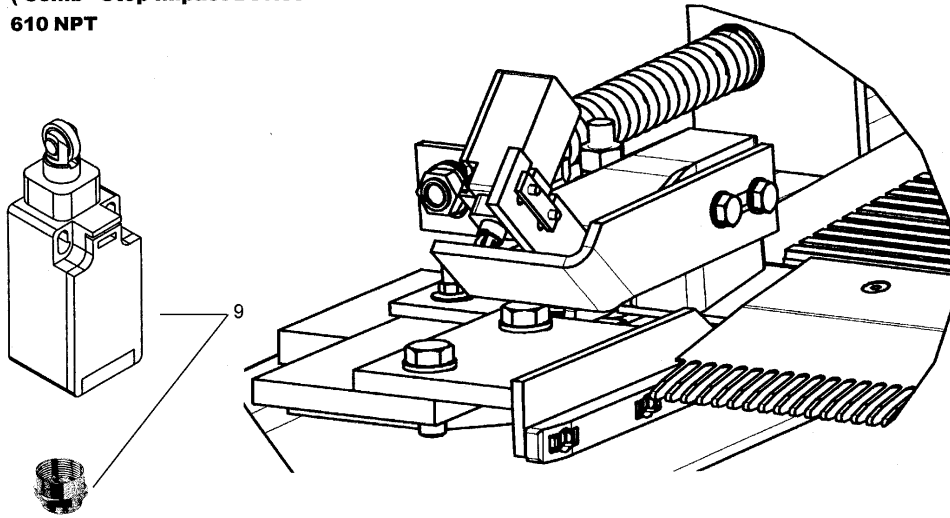


VINTAGE		
REF. No.	PART No.	DESCRIPTION
7	GAA177HA1	Switch
	GBA177HA1	
8	GAA177HK2	Switch
	GBA177HK2	
7-8	GAA381A3	Cable gland (M20x1,5)
	GAA381H1	Adapter (PG11 – M20x1,5)

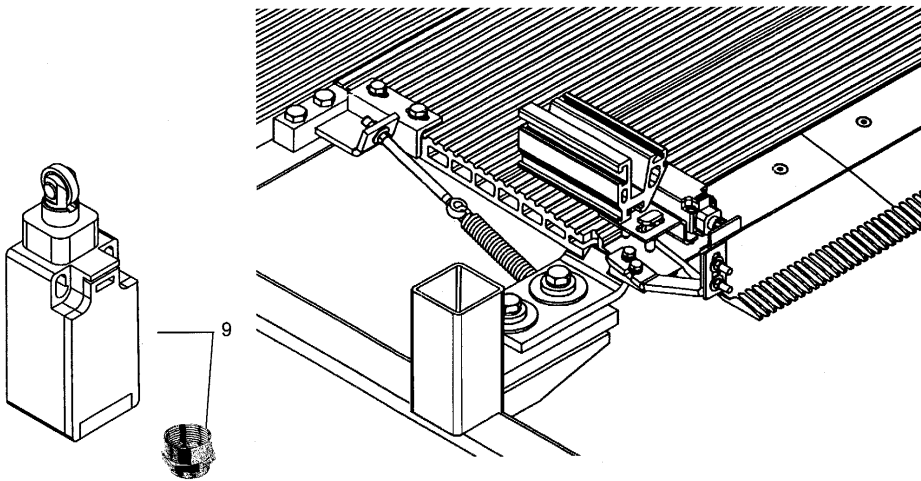
Comb Plate Contact

50-G0177AG

**Comb Plate Contact
(Comb - Step Impact Device
610 NPT**



**Comb Plate Contact
(Comb - Step Impact Device
606 NCT**



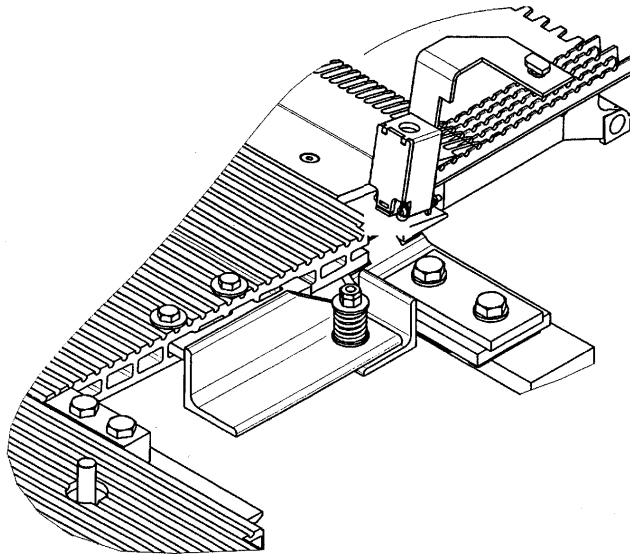
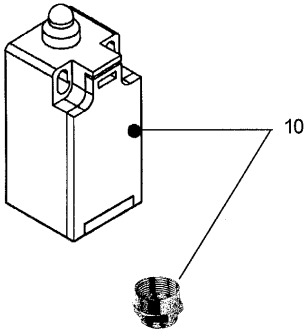
VINTAGE		
REF. No.	PART No.	DESCRIPTION
9	GAA177HK2	Switch
	GBA177HK2	
	GAA381A3	Cable gland (M20x1,5)
	GAA381H1	Adapter (PG11 – M20x1,5)

Comb Plate Contact


50-G0177AG

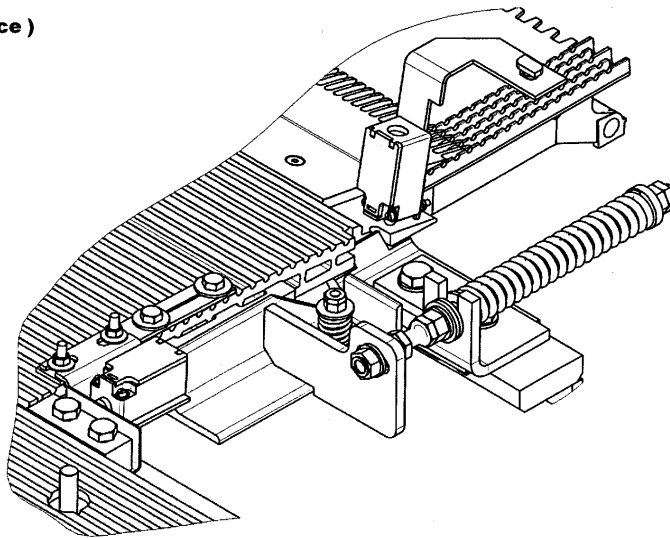
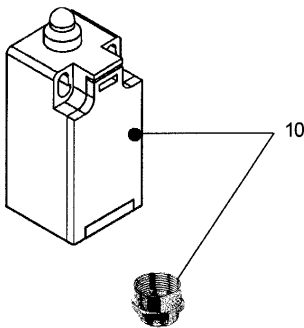
**Comb Plate Contact
(Comb - Step Impact Device)**

606 NCT 



**Comb Plate Contact
(Comb - Step Impact Device)**

606 NCT 

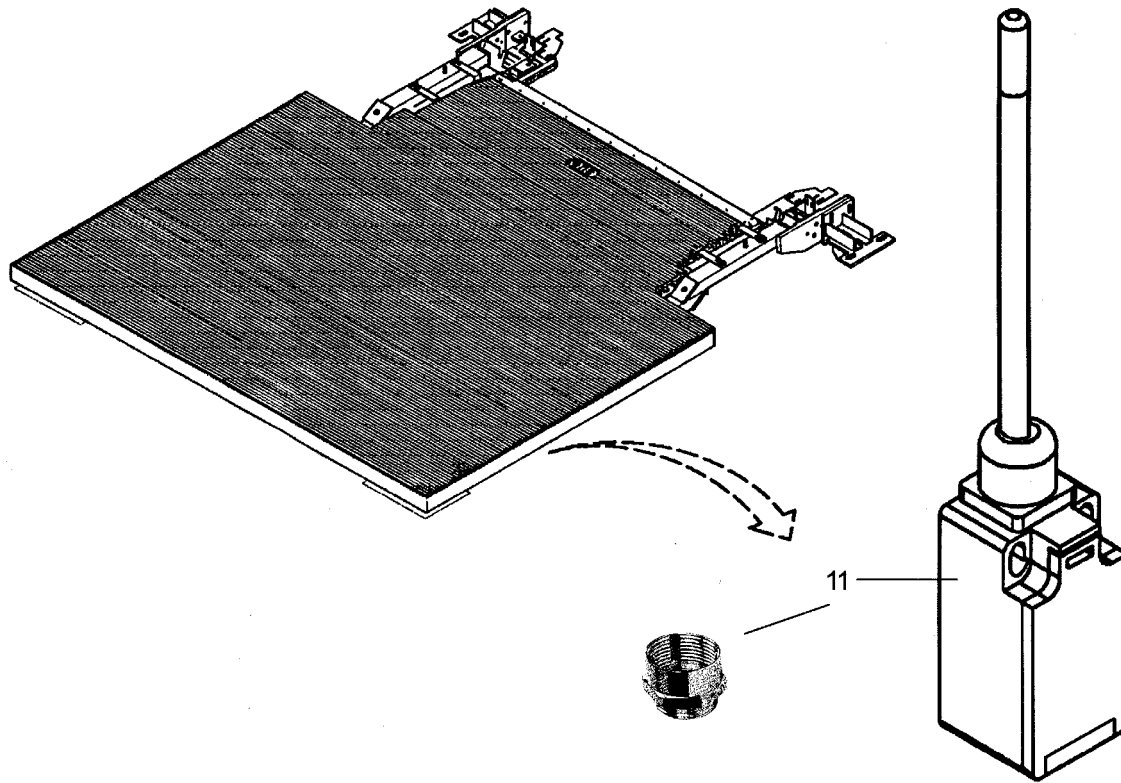


VINTAGE		
REF. No.	PART No.	DESCRIPTION
10	GAA177HA4	Switch
	GBA177HA1	
	GAA384A3	Cable gland (M20x1,5)
	GAA381H1	Adapter (PG11 – M20x1,5)

Floor Plate Safety Device

50-G0177AG

Floorplate Safety Device

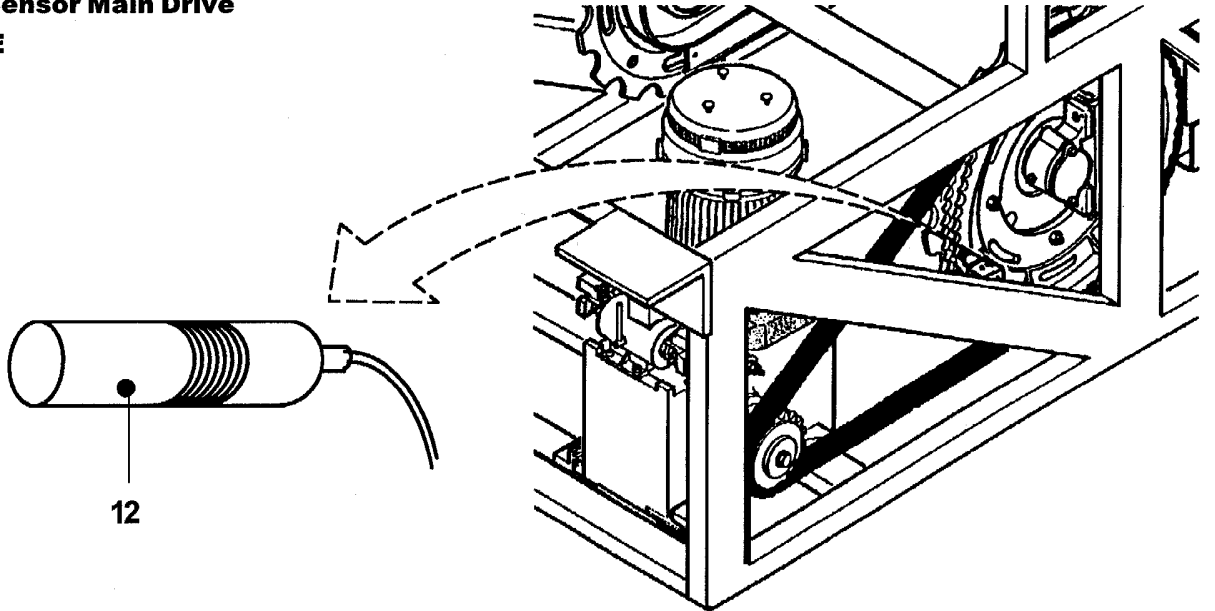


VINTAGE		
REF. No.	PART No.	DESCRIPTION
11	GAA177GY4	Switch
	GBA177GY1	
	GAA381A3	Cable gland (M20x1,5)
	GAA381H1	Adapter (PG11 – M20x1,5)

Speed Sensor Main Drive

50-G0177AG

**Speed Sensor Main Drive
513 NPE**



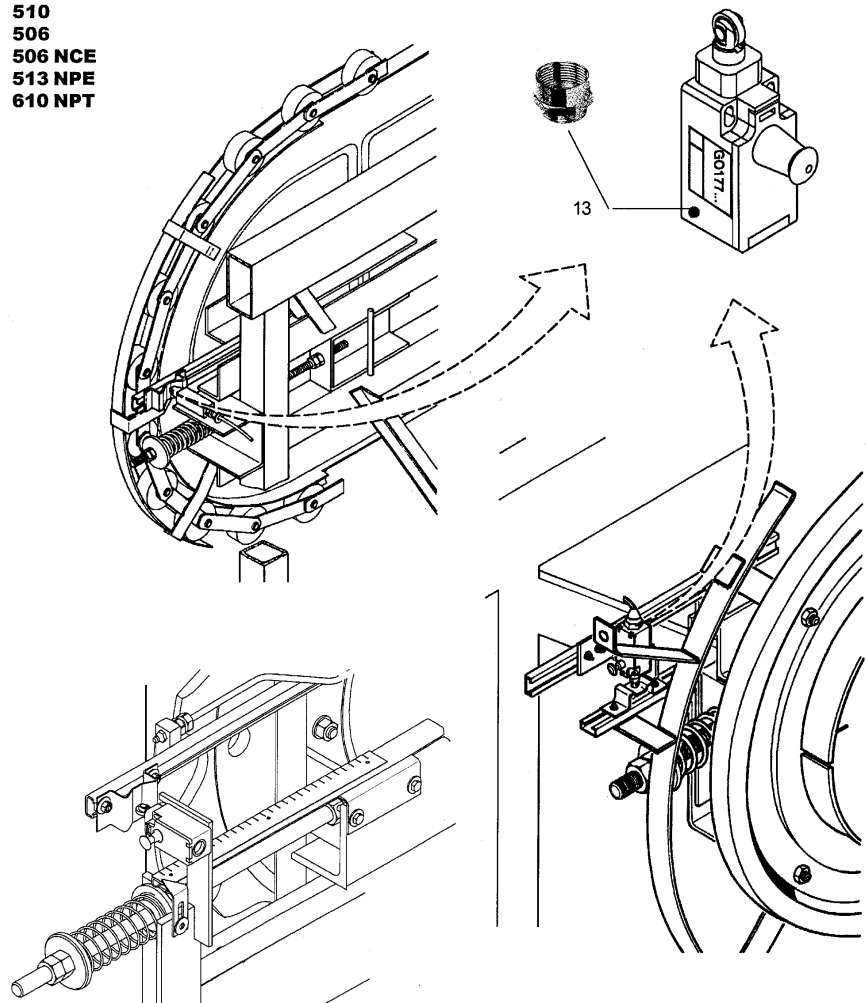
	VINTAGE	
REF. No.	PART No.	DESCRIPTION
12	GAA608B2	Inductive Proximity Sensor

Broken Step Chain Contact

50-GO177AG

Broken Step Chain Contact

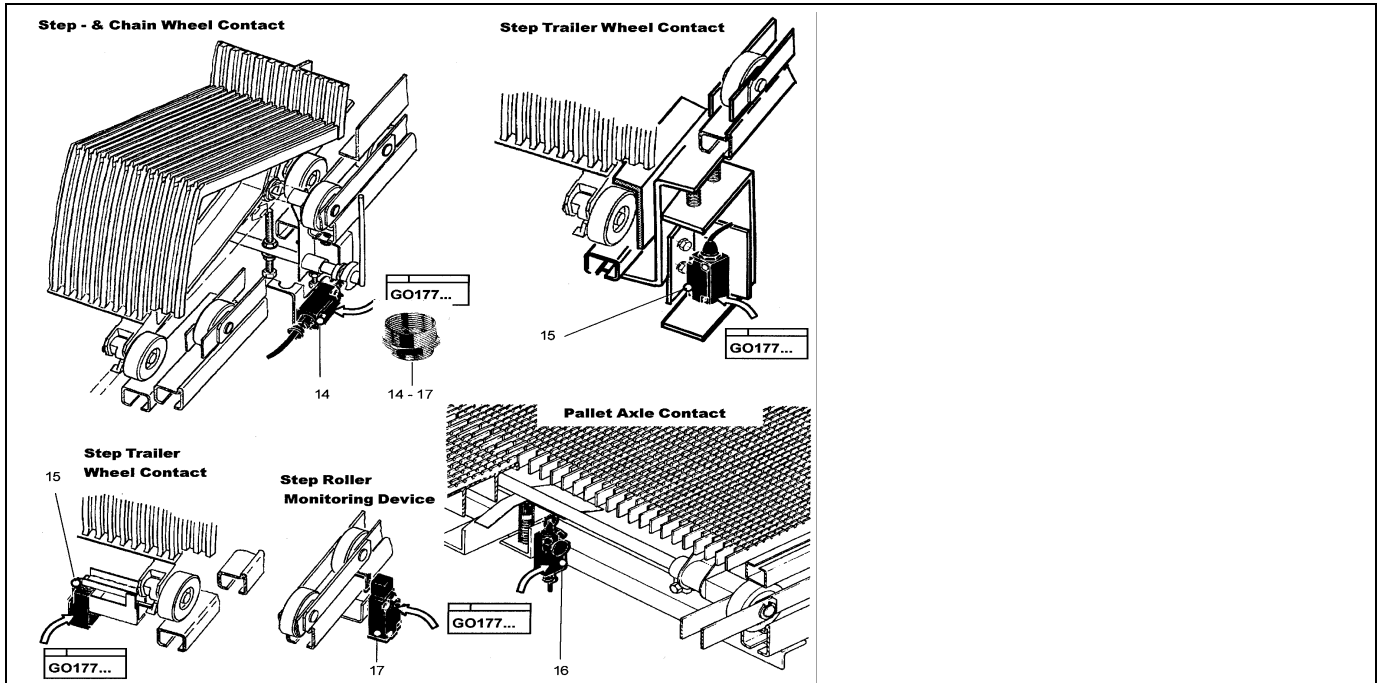
- 510
- 506
- 506 NCE
- 513 NPE
- 610 NPT



VINTAGE		
REF. No.	PART No.	DESCRIPTION
13	GO177BX5	Switch
	GO177AG6	
	GO177FD5	
	GAA177HL1	
	GAA177HL2	
	GBA177HL2	
	GAA381A3	
GAA381H1	Adapter (PG11 – M20x1,5)	

Step- & Chain Wheel Contact

50-GO177AG



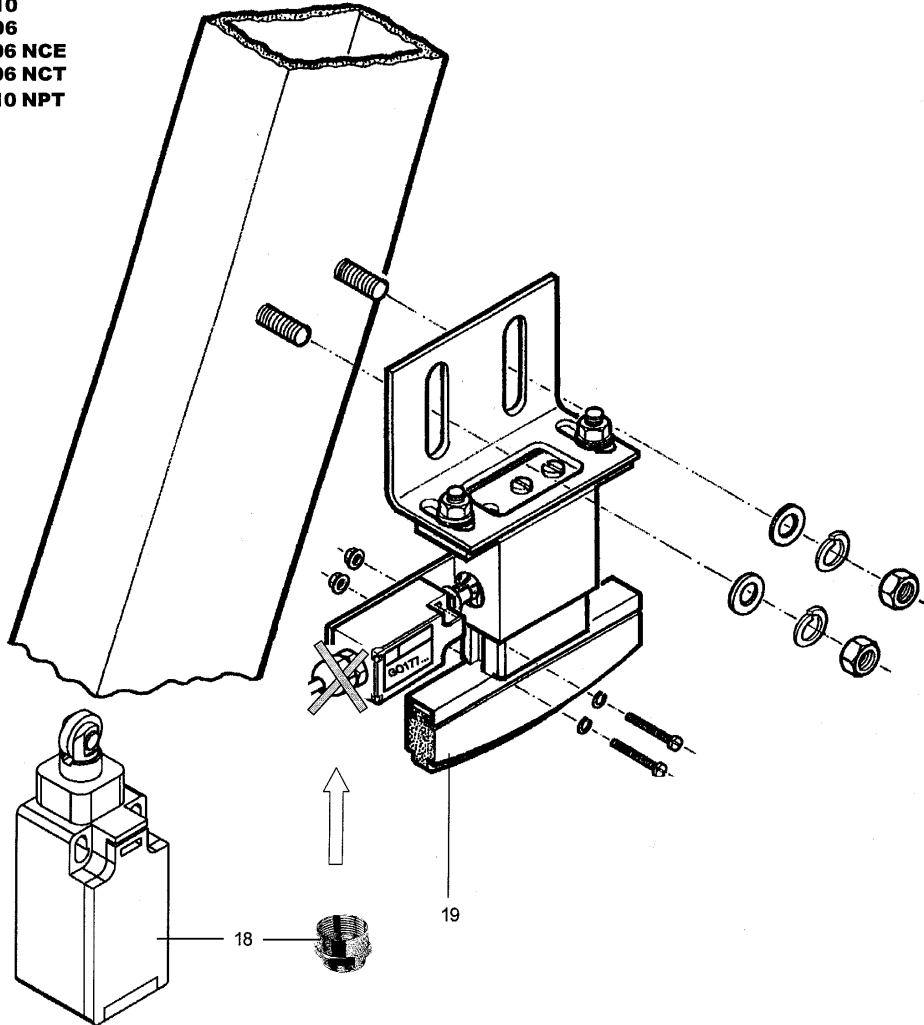
VINTAGE		
REF. No.	PART No.	DESCRIPTION
14	GO177AG2	Switch – Escalator 510, 506
	GO177BX2	
	GAA177HK1	
	GBA177HK1	
15	GO177AG4	Switch – Escalator 510, 506, 513NPE
	GO177BX4	
	GAA177HA1	
	GBA177HA1	
16	GO177AG6	Switch – Trav-O-Lator
	GO177BX5	
	GAA177HL2	
	GBA177HL1	
17	GO177CJ4	Switch – Escalator 506SL, 506NCE
	GAA177HM4	
	GBA177HM1	
14-17	GAA381A3	Cable gland (M20x1,5)
	GAA381H1	Adapter (PG11 – M20x1,5)

Broken Drive Chain Contact

50-GO177AG

Broken Drive Chain Contact

- 510
- 506
- 506 NCE
- 606 NCT
- 610 NPT

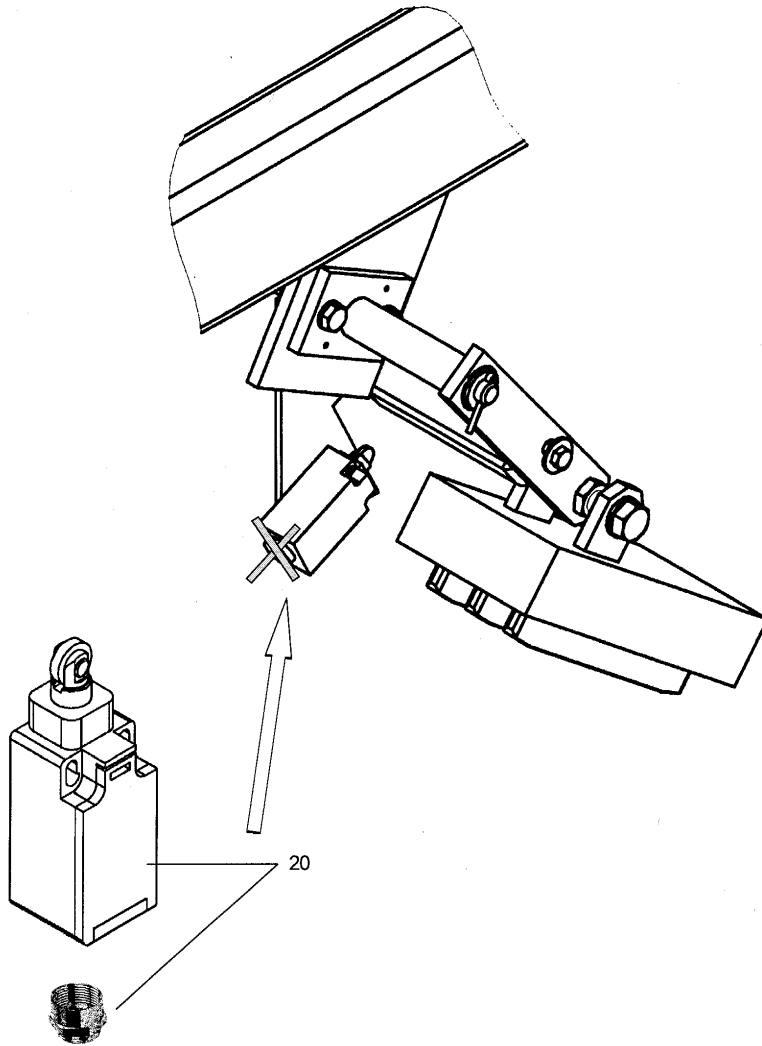


VINTAGE		
REF. No.	PART No.	DESCRIPTION
18	GO177AG2	Switch
	GO177BX2	
	GAA177FD5	
	GAA177HK1	
	GBA177HK1	
	GAA381A3	Cable gland (M20x1,5)
	GAA381H1	Adapter (PG11 – M20x1,5)
19	GO385EP1	Tension box

Broken Drive Chain Contact

50-G0177AG

Broken Drive Chain Contact
510-S/-L/-M , 516- I/-A

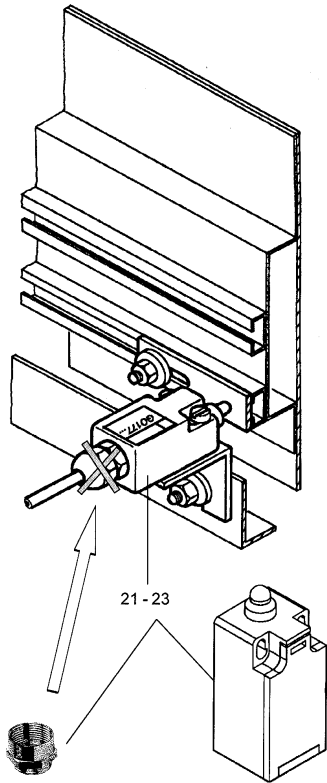


VINTAGE		
REF. No.	PART No.	DESCRIPTION
20	GAA177HK4	Switch
	GBA177HK1	
	GAA381A3	Cable gland (M20x1,5)
	GAA381H1	Adapter (PG11 – M20x1,5)

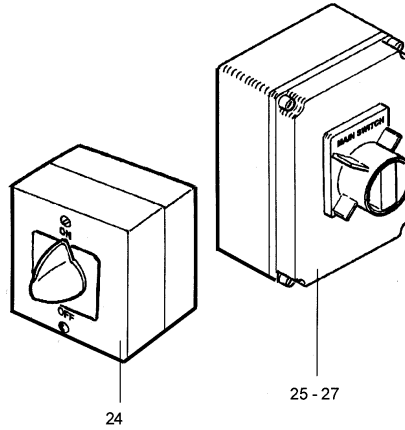
Skirt Safety Contact

50-GO177AG

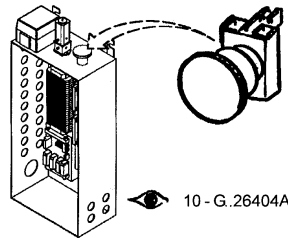
**Skirt Safety Contact
(Skirt Obstruction Device)**



Main Switch



**Stop Switch in
Maintenance Room**

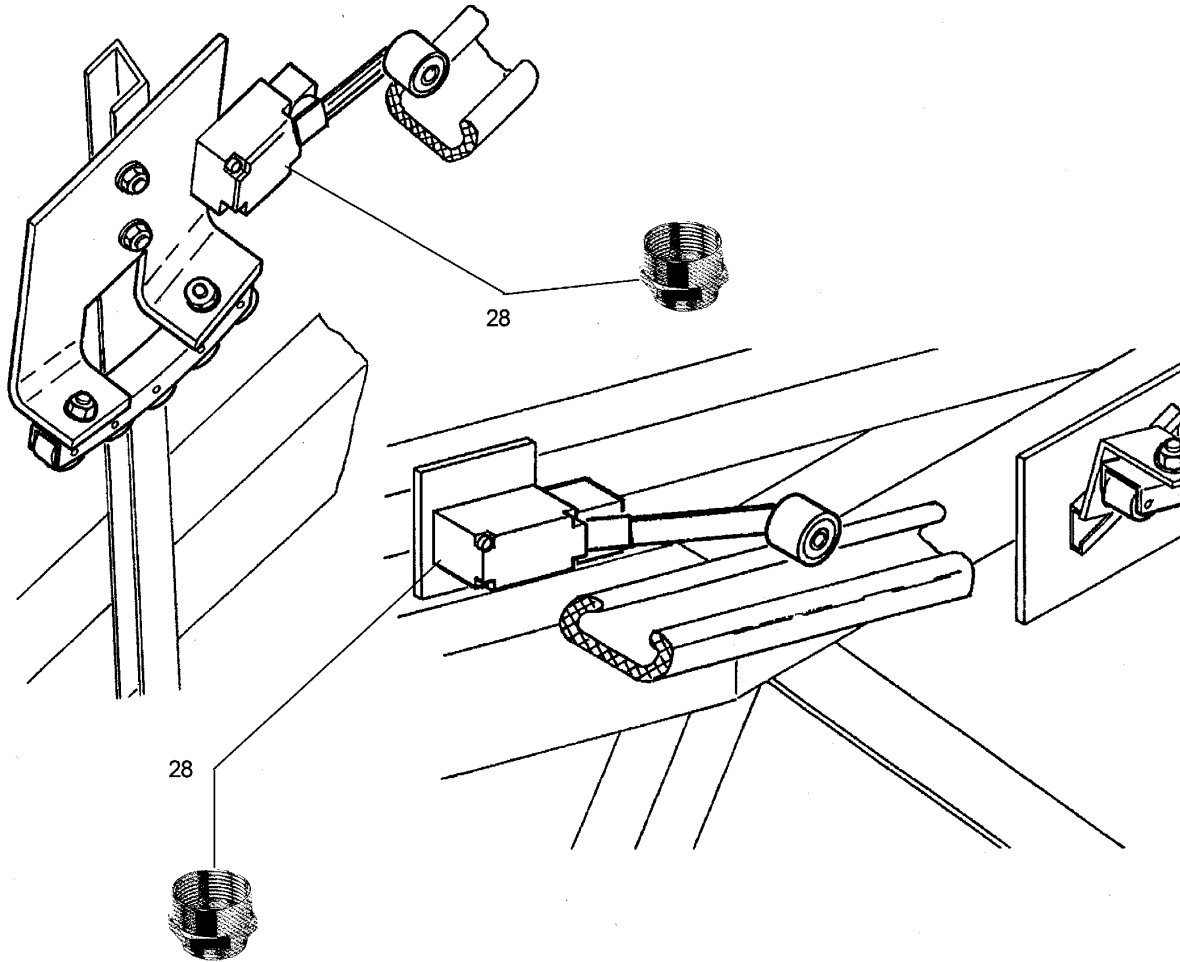


REF. No.	VINTAGE PART No.	DESCRIPTION
21	GO2215AP1	Microswitch
22	GO177AG4	Switch – Escalator 510, 506
	GO177BX4	
	GAA177FD4	
	GAA177HA4	
	GBA177HA1	
23	GAA384A3	Cable gland (M20x1,5)
	GAA381H1	Adapter (PG11 – M20x1,5)
24	GO2215AP2	Signal-current breaker
25	GO177AX101	Main switch 15kW
26	GO177AX102	Main switch 18,5kW
27	GO177AX103	Main switch 22kW

Handrail Breaking Device

50-GO177AG

Handrail Breaking Device

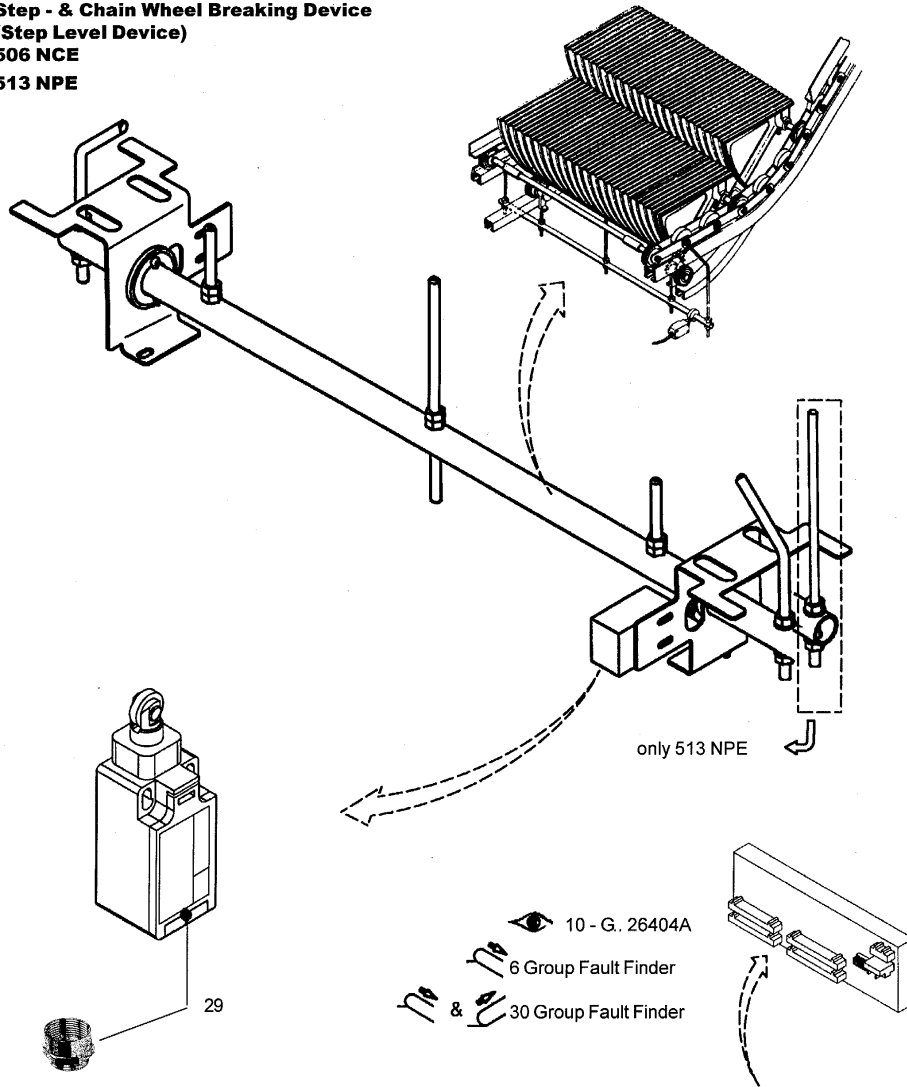


VINTAGE		
REF. No.	PART No.	DESCRIPTION
28	GO177AG4	Switch
	GAA177EG4	
	GBA177EG1	
	GAA381H2	Adapter (PG13,5 – M20x1,5)

Step- & Chain Wheel Breaking Device

50-G0177AG

**Step - & Chain Wheel Breaking Device
(Step Level Device)
506 NCE
513 NPE**

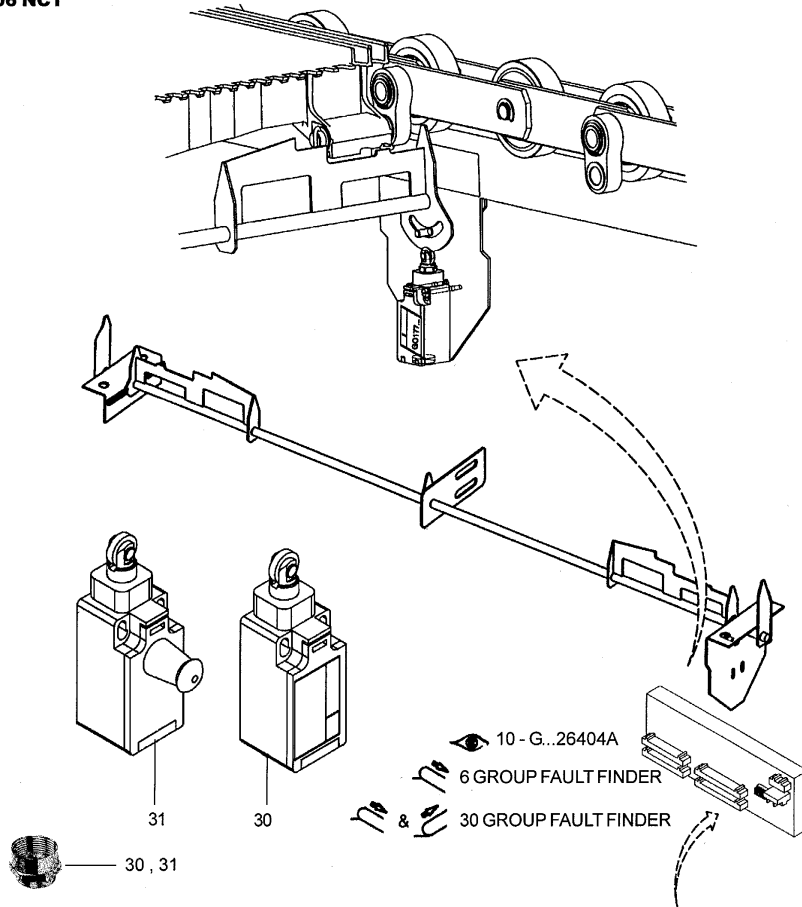


REF. No.	VINTAGE PART No.	DESCRIPTION
29	GAA177FD2	Switch → 30 Group Fault Finder
	GAA177HK1	
	GBA177HK1	
	GAA381A3	Cable gland (M20x1,5)
	GAA381H1	Adapter (PG11 – M20x1,5)

Pallet- & Chain Wheel Breaking Device

50-G0177AG

**Pallet - & Chain Wheel Breaking Device
(Pallet Monitoring Device)
606 NCT**

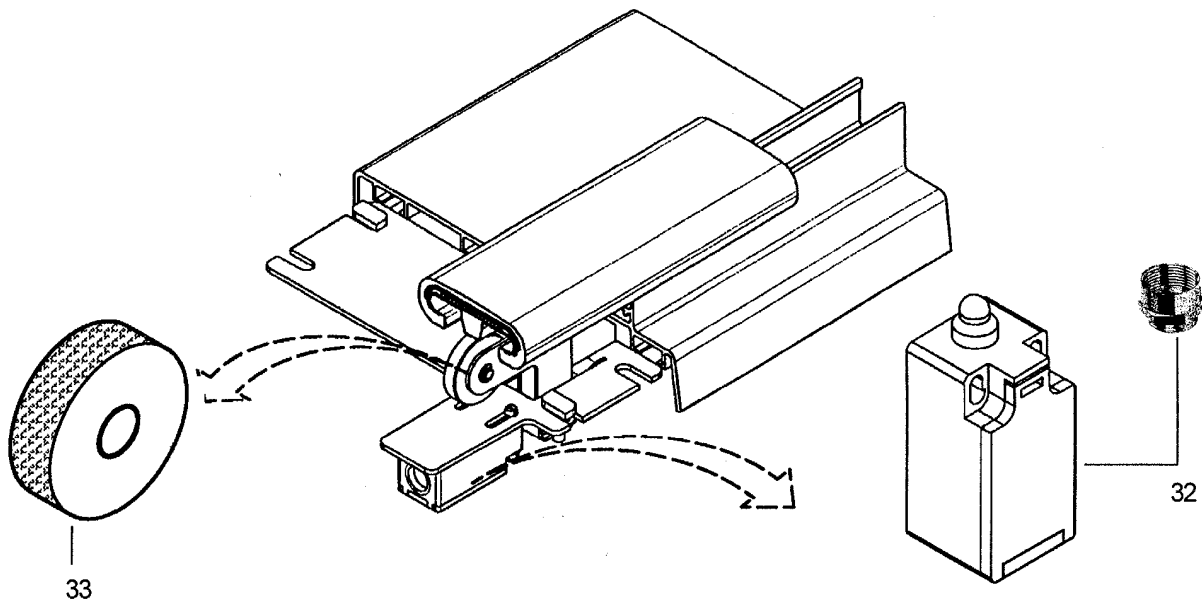


VINTAGE			
REF. No.	PART No.	DESCRIPTION	
30	GAA177FD2	Switch → 30 Group Fault Finder	
	GAA177HK1		
	GBA177HK1		
	GAA381A3		Cable gland (M20x1,5)
	GAA381H1		Adapter (PG11 – M20x1,5)
31	GAA177HL1	Switch → 6 Group Fault Finder	
	GBA177HL1		
	GAA381A3	Cable gland (M20x1,5)	
	GAA381H1	Adapter (PG11 – M20x1,5)	

Handrail Lifting Control Contact

50-G0177AG

Handrail Lifting Control Contact 513 NPE

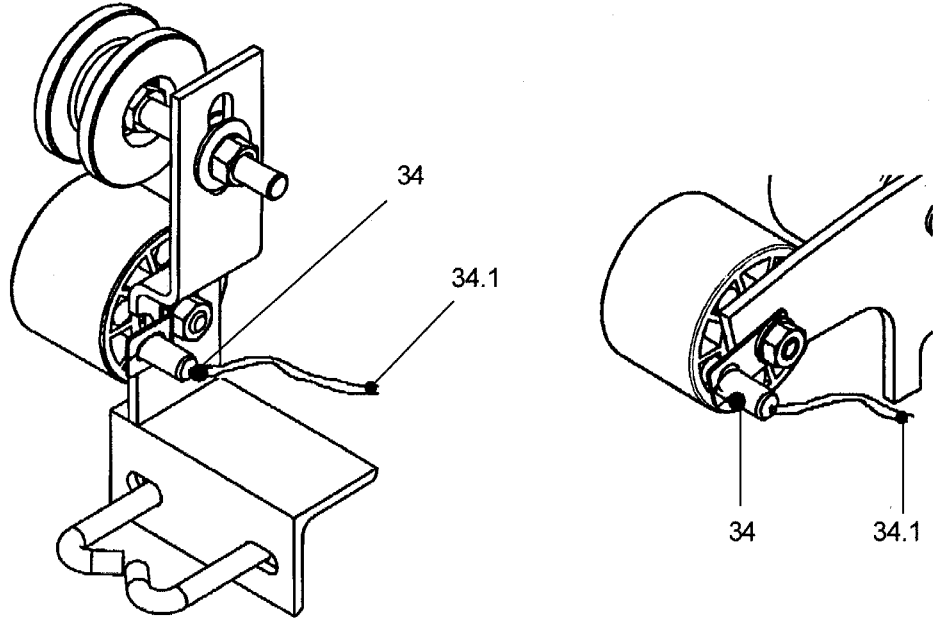


VINTAGE		
REF. No.	PART No.	DESCRIPTION
32	GAA177HA1	Switch
	GBA177HA1	
	GAA381A3	Cable gland (M20x1,5)
	GAA381H1	Adapter (PG11 – M20x1,5)
33	GAA290BY1	Roller

Handrail Speed Monitoring Device

50-G0177AG

Handrail Speed Monitoring Device
513 NPE
506 NCE
606 NCT

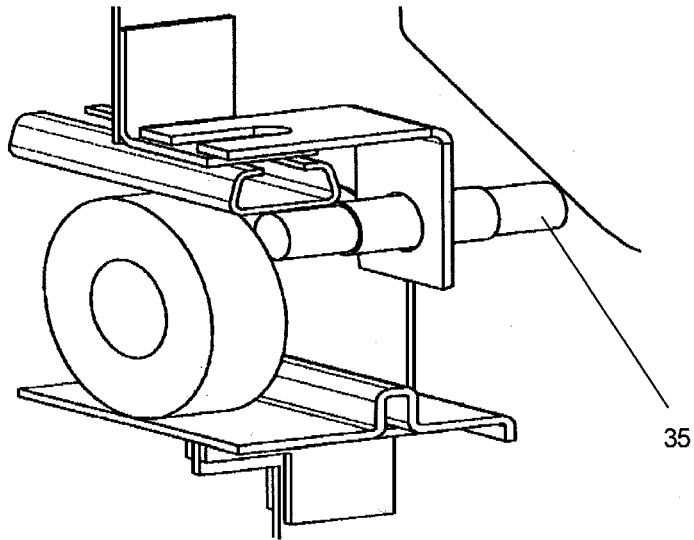


VINTAGE		
REF. No.	PART No.	DESCRIPTION
34	GAA608A2	Inductive Proximity Sensor (M12)
34.1	GAA174RN1	Cable for GAA608A2

Missing Step Device

50-G0177AG

Missing Step Device
513 NPE
506 NCE

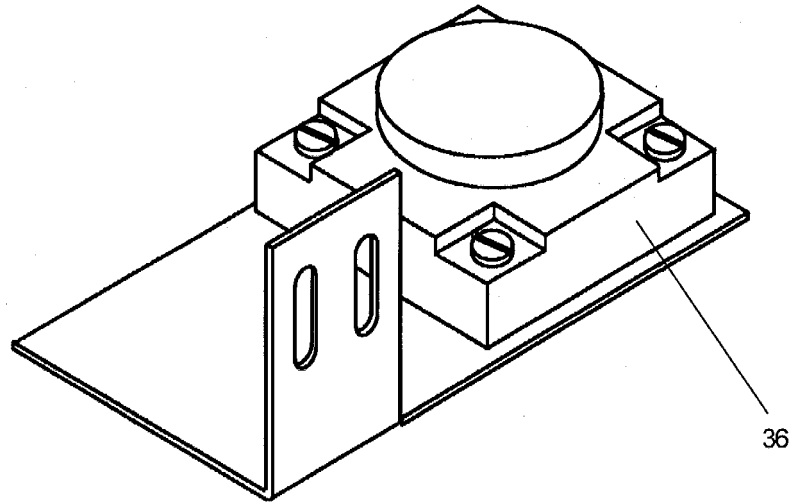


	VINTAGE	
REF. No.	PART No.	DESCRIPTION
35	GAA608D1	Inductive Proximity Sensor
	GAA608D2	
	GAA608D3	

Missing Step Device

50-G0177AG

**Missing Step Device
513 NPE
506 NCE**

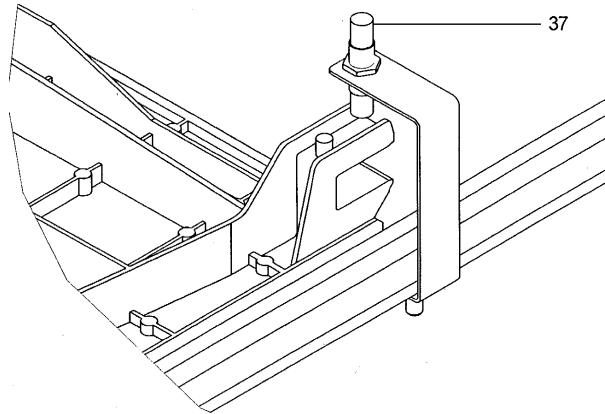


	VINTAGE	
REF. No.	PART No.	DESCRIPTION
36	GAA608C1	Inductive Proximity Sensor
	GBA608C1	

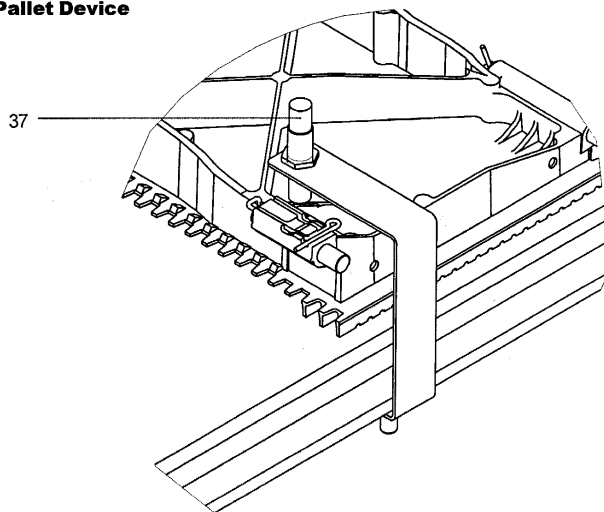
Missing Pallet Device

50-G0177AG

**Missing Pallet Device
610 NPT**



**Missing Pallet Device
606 NCT**

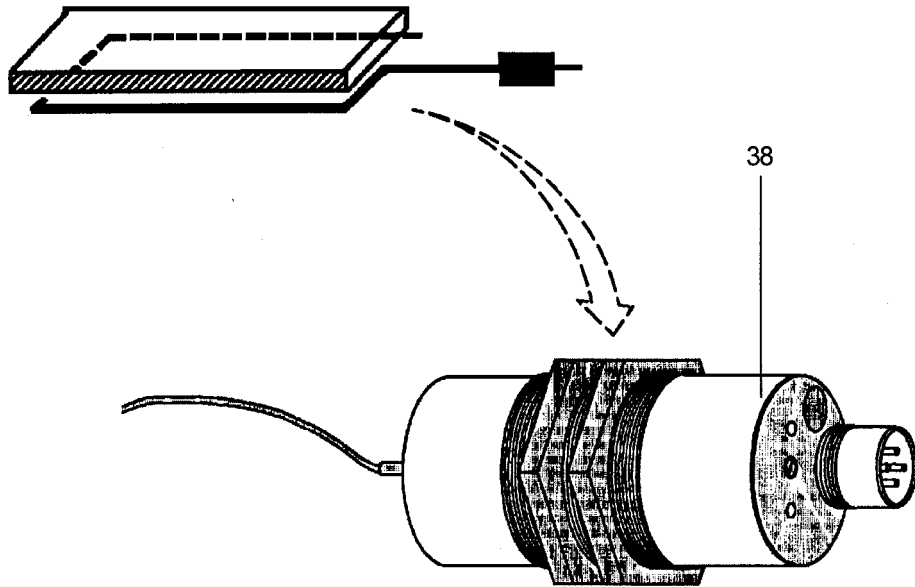


VINTAGE		
REF. No.	PART No.	DESCRIPTION
37	GAA608D2	Inductive Proximity Sensor
	GAA608D3	

Piezo Contact Mat

50-G0177AG

Piezo Contact Mat



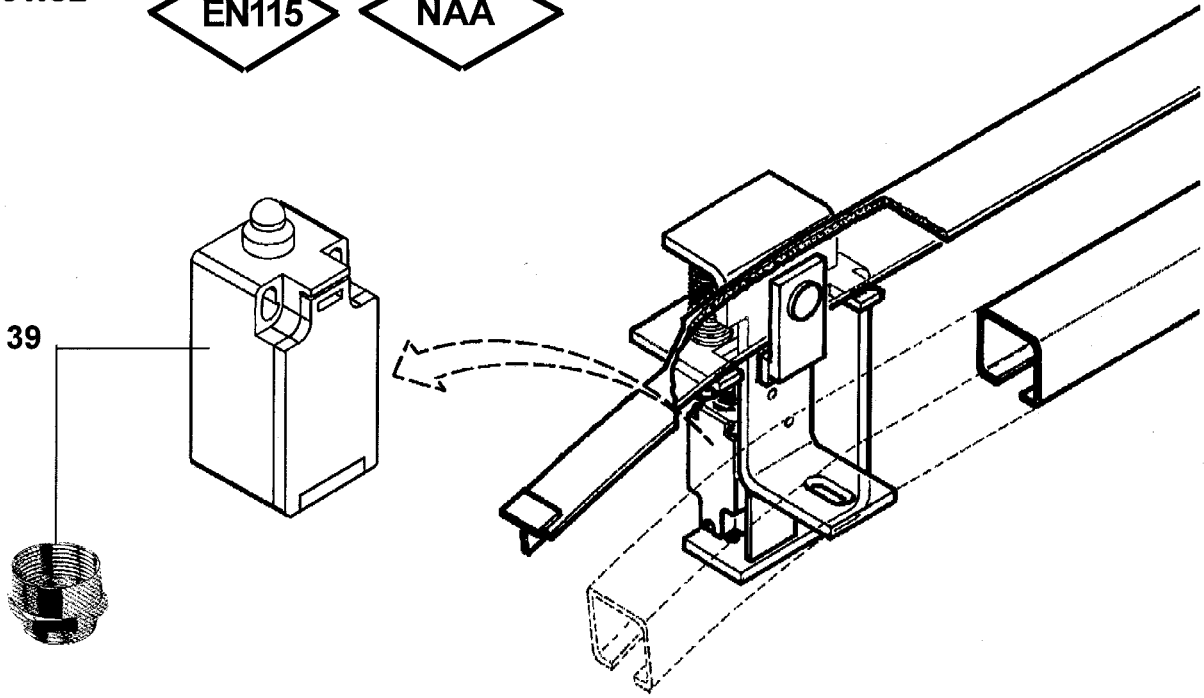
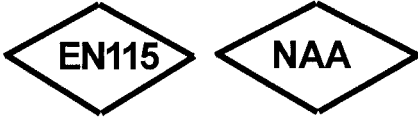
	VINTAGE	
REF. No.	PART No.	DESCRIPTION
38	GAA177GZ1	Piezo electrical push button

Step Upthrust Device

50-G0177AG

Step Upthrust Device

506 NCE

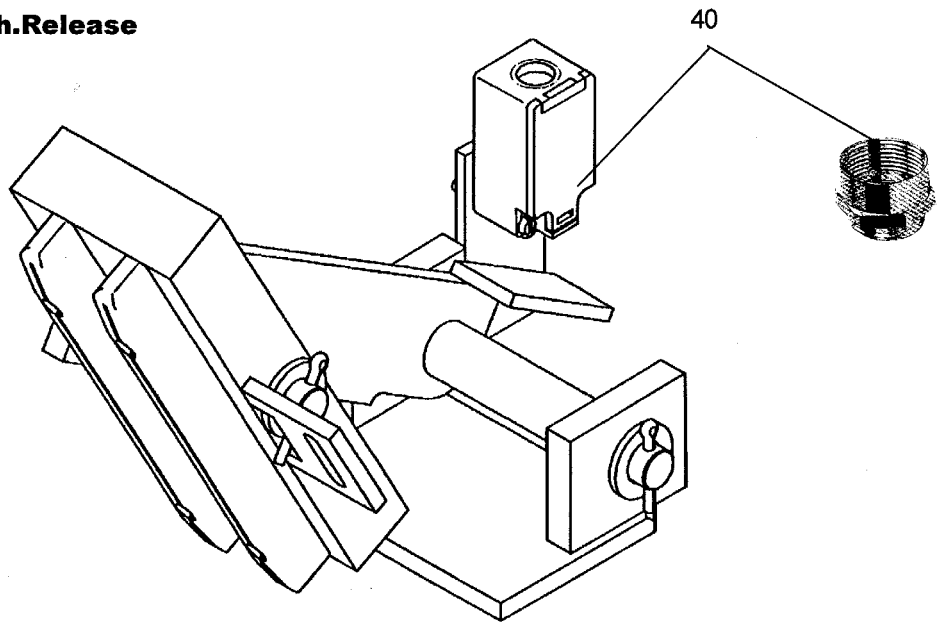


VINTAGE		
REF. No.	PART No.	DESCRIPTION
39	GAA177HA1	Switch
	GBA177HA1	
	GAA381A3	Cable gland (M20x1,5)
	GAA381H1	Adapter (PG11 – M20x1,5)

Auxiliary Brake, mechanical release

50-G0177AG

Auxiliary Brake, Mech. Release

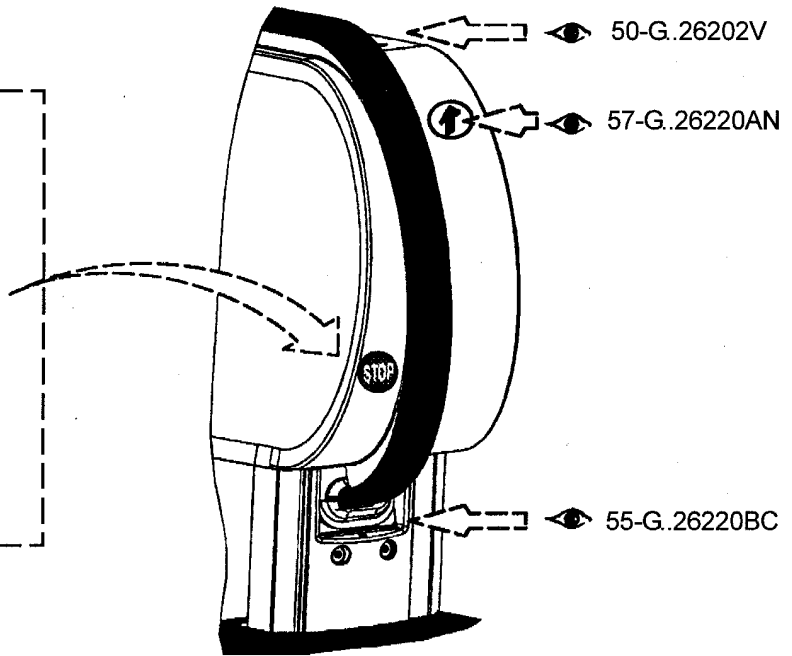
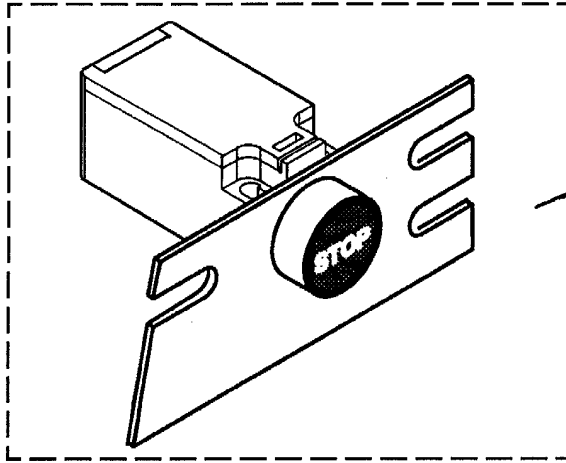


VINTAGE		
REF. No.	PART No.	DESCRIPTION
40	GAA177HA4	Switch
	GBA177HA1	
	GAA381A3	Cable gland (M20x1,5)
	GAA381H1	Adapter (PG11 – M20x1,5)

Emergency Stop Switch

50-G0177AG

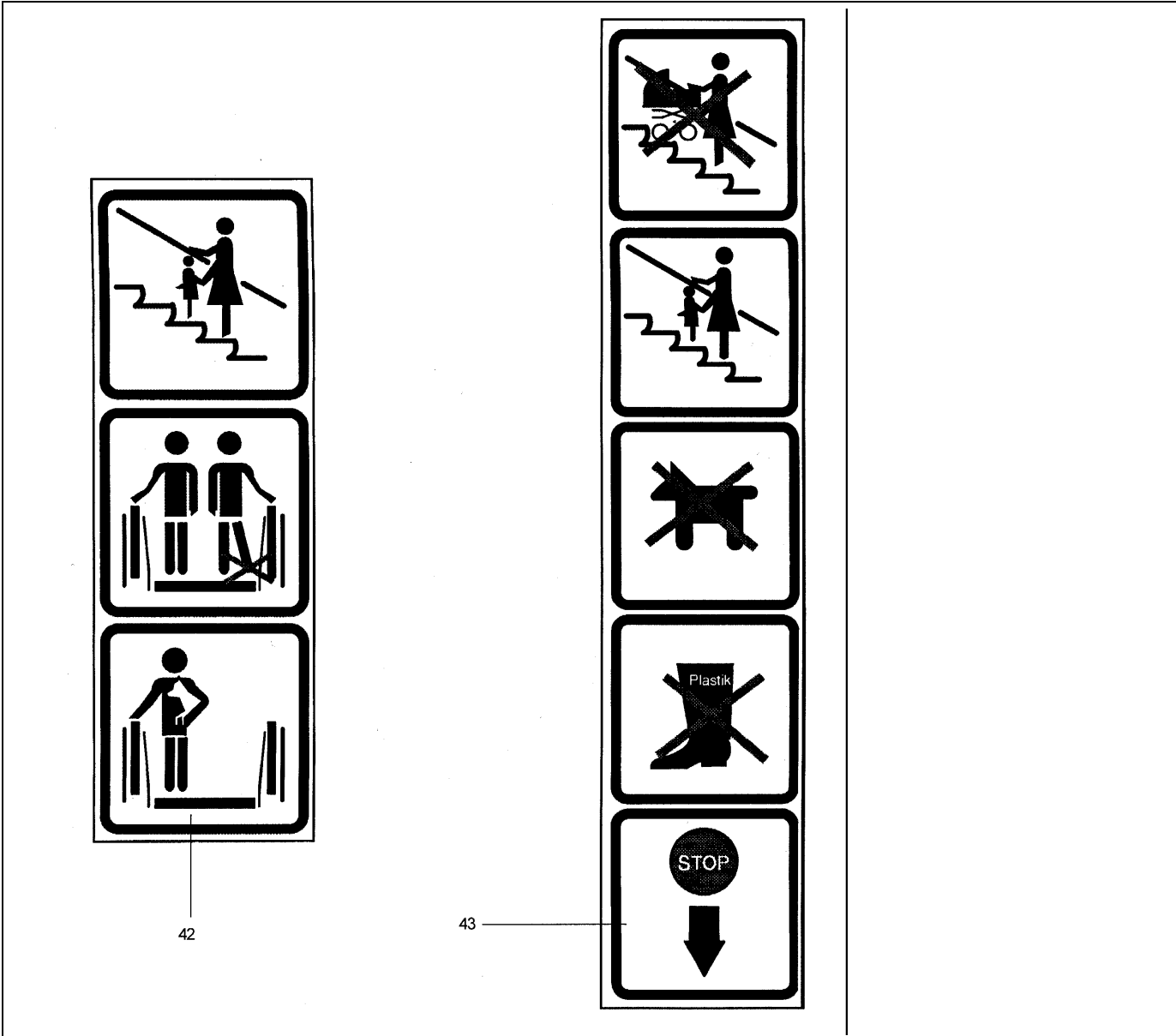
**Emergency Stop Switch
513 NPE**



REF. No.	VINTAGE PART No.	DESCRIPTION
41	GAA177HJ1	Switch
	GAA177HA2	
	GBA177HA3	
	GAA381A3	Cable gland (M20x1,5)
	GAA381H1	Adapter (PG11 – M20x1,5)

Shield

50-GO177AG



42

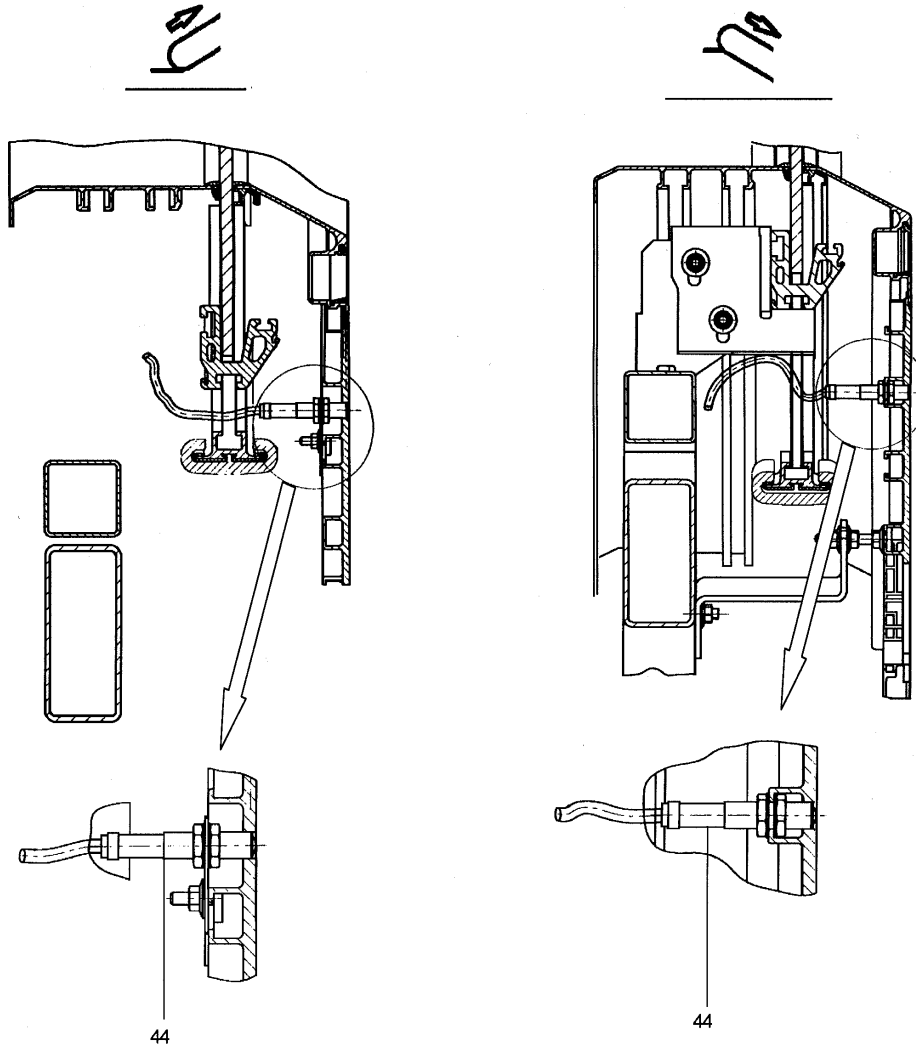
43

VINTAGE		
REF. No.	PART No.	DESCRIPTION
42	GO102XS1	Shield
43	UB2361-6	Shield

Passenger Counter

50-G0177AG

Passenger Counter
506 NCE
513 NPE-SR

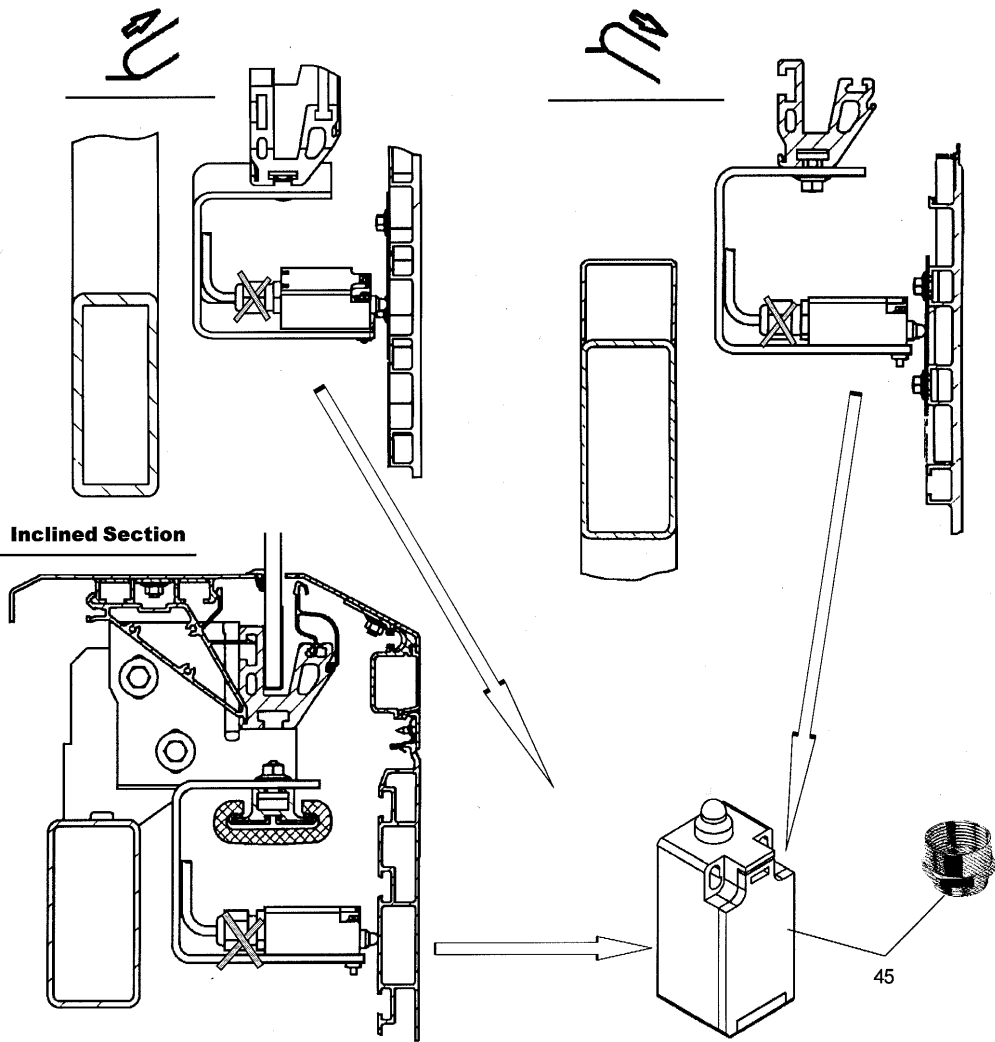


VINTAGE		
REF. No.	PART No.	DESCRIPTION
44	GAA629AC1	Sensor (passenger counter)

Skirt Obstruction Device

50-GO177AG

Skirt Obstruction Device
506 NCE
513 NPE-SR

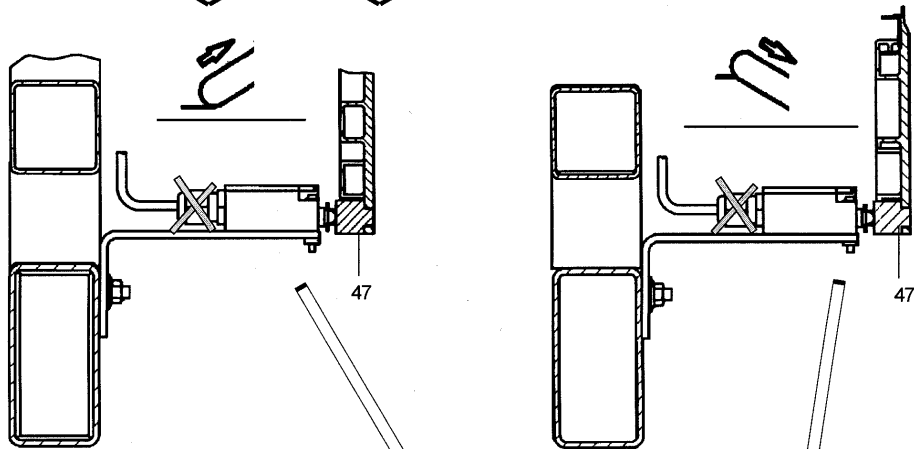
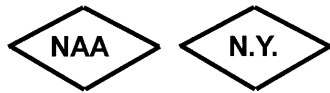


VINTAGE		
REF. No.	PART No.	DESCRIPTION
45	GAA177HA1	Switch
	GBA177HA1	
	GAA381A3	Cable gland (M20x1,5)
	GAA381H1	Adapter (PG11 – M20x1,5)

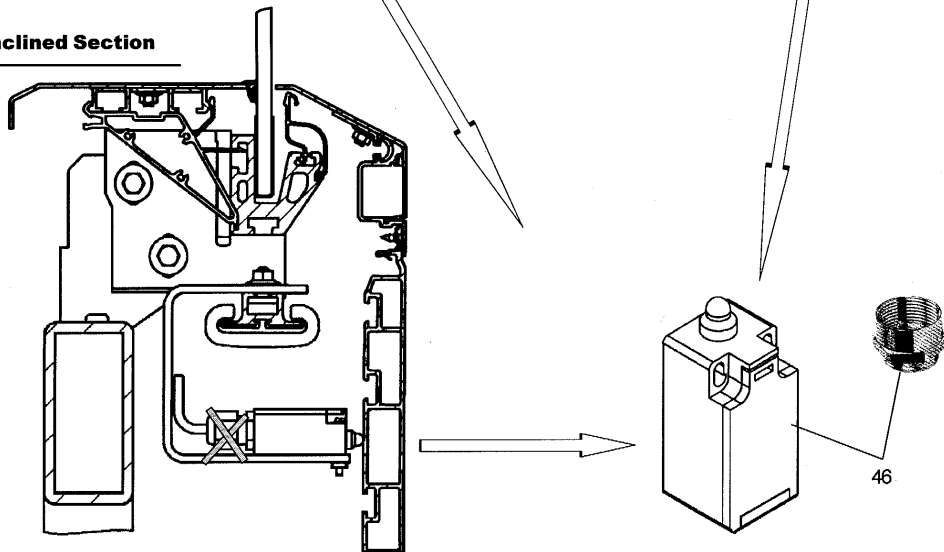
Skirt Obstruction Device

50-GO177AG

**Skirt Obstruction Device
506 NCE**



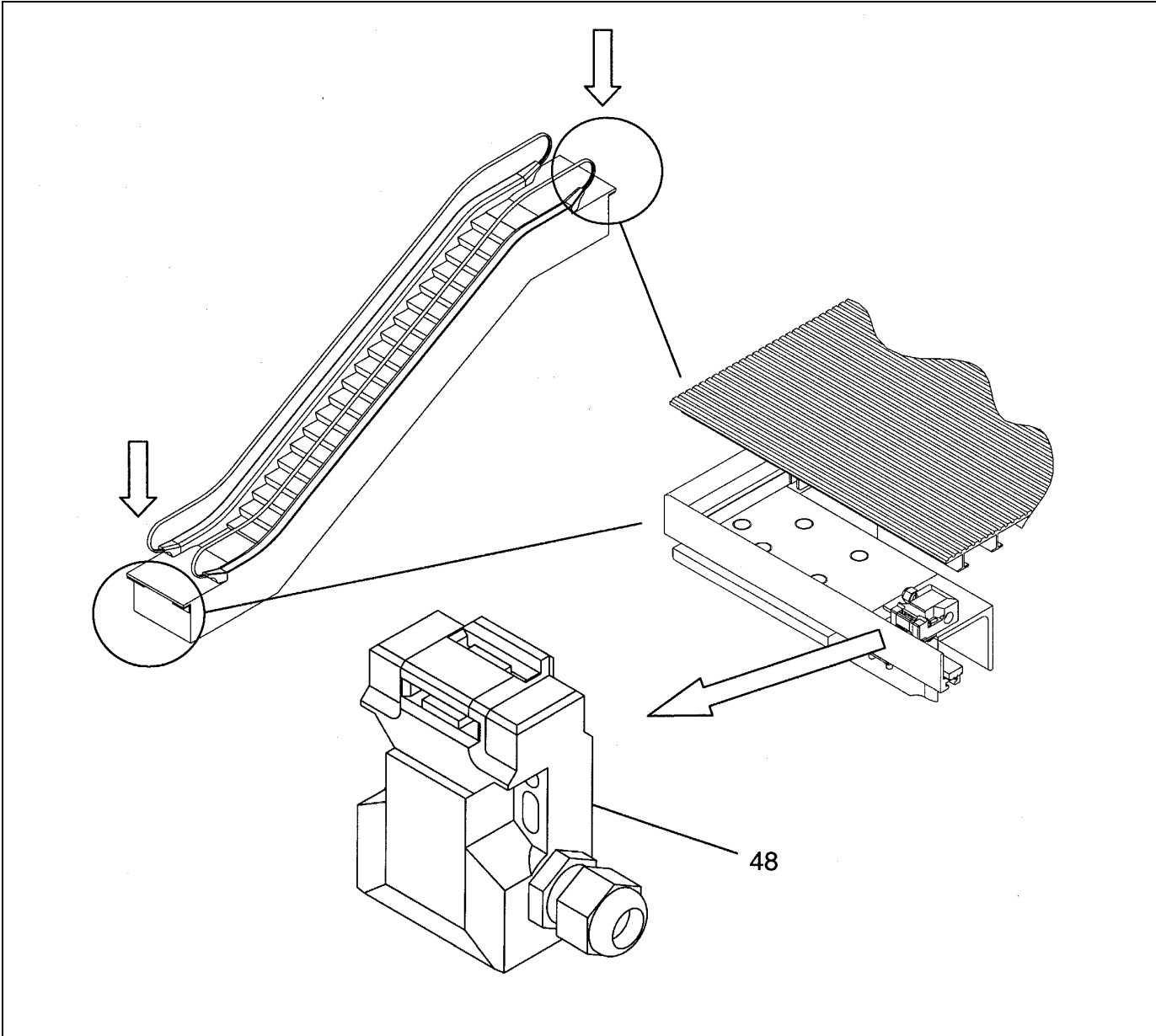
Inclined Section



VINTAGE		
REF. No.	PART No.	DESCRIPTION
46	GAA177HA1	Switch
	GBA177HA1	
	GAA381A3	Cable gland (M20x1,5)
	GAA381H1	Adapter (PG11 – M20x1,5)
47	GAA310JL1	Plunger

Floor Plate Safety Switch

50-G0177AG



VINTAGE		
REF. No.	PART No.	DESCRIPTION
48	GAA177KH1	Switch (including actuator)
	GAA381A2	Cable gland (M16)