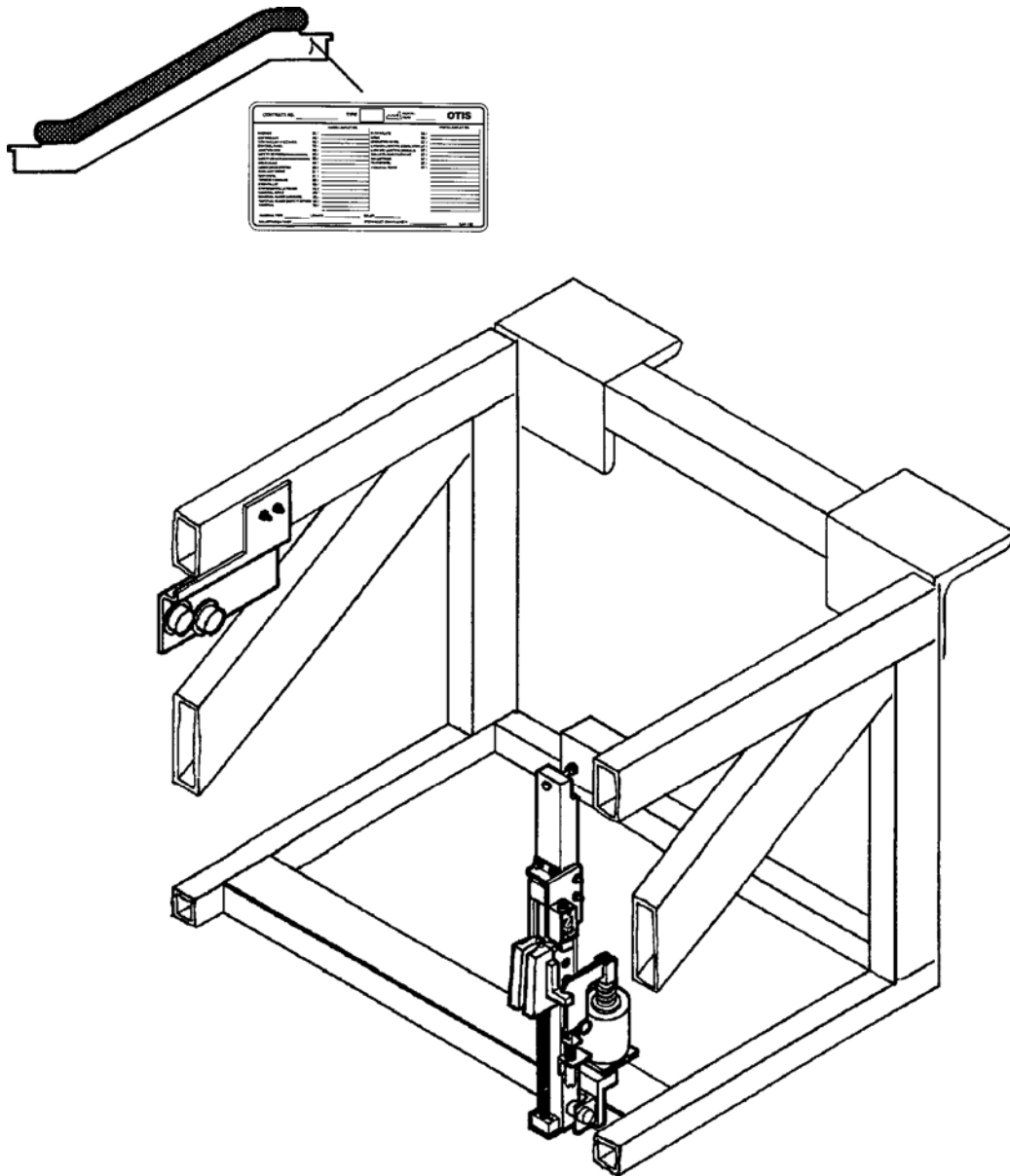


Escalator 506 SL  
Auxiliary Brake

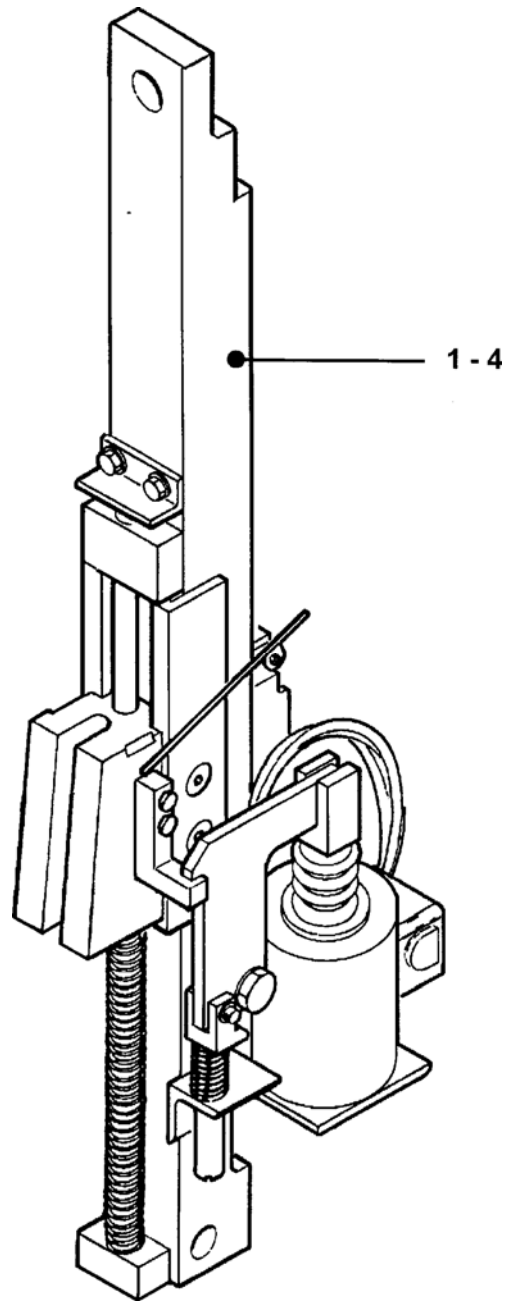
Spare Parts Leaflet

51-9703EG

November 2001 / Page 1 of 4

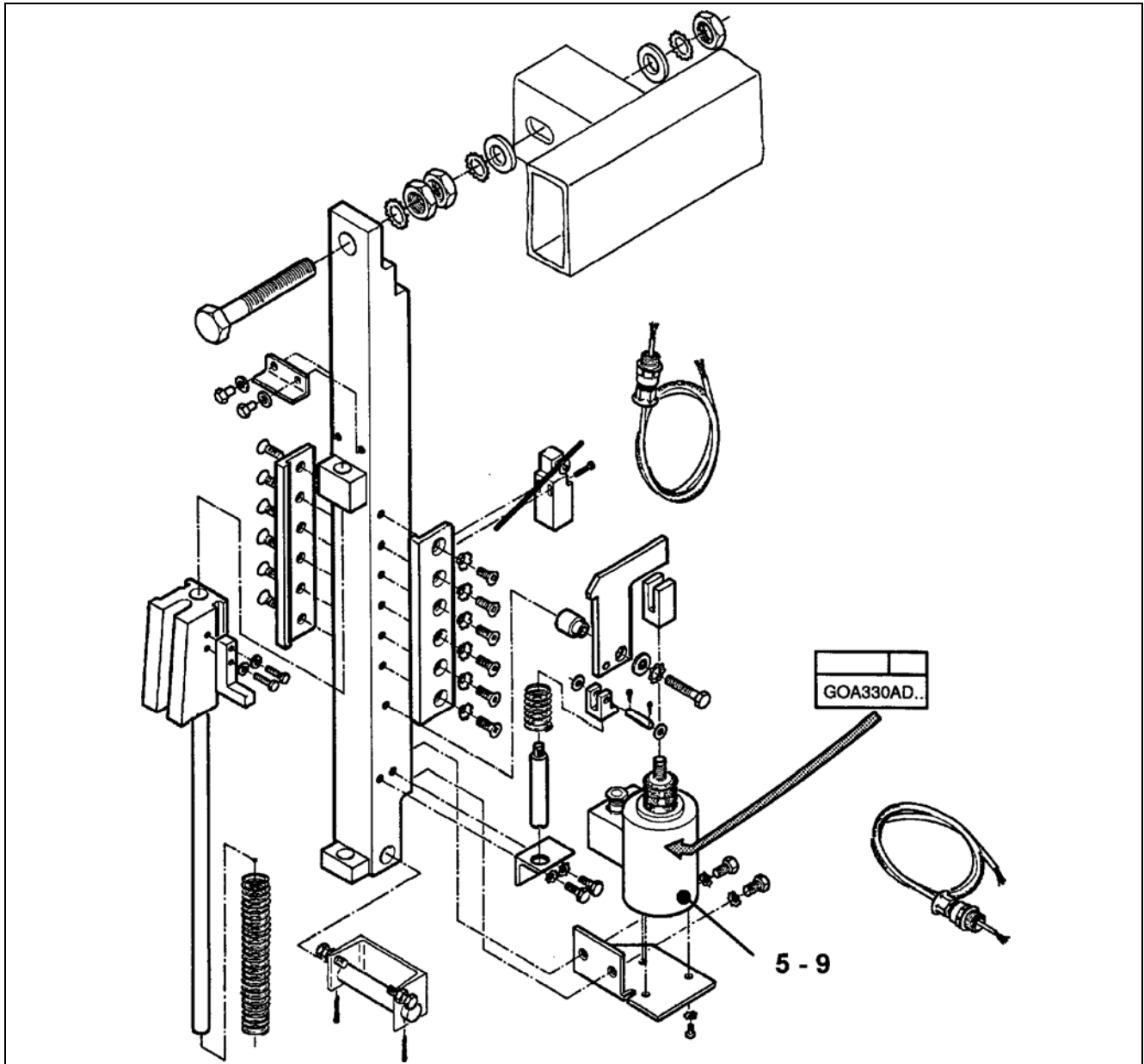


**OTIS**



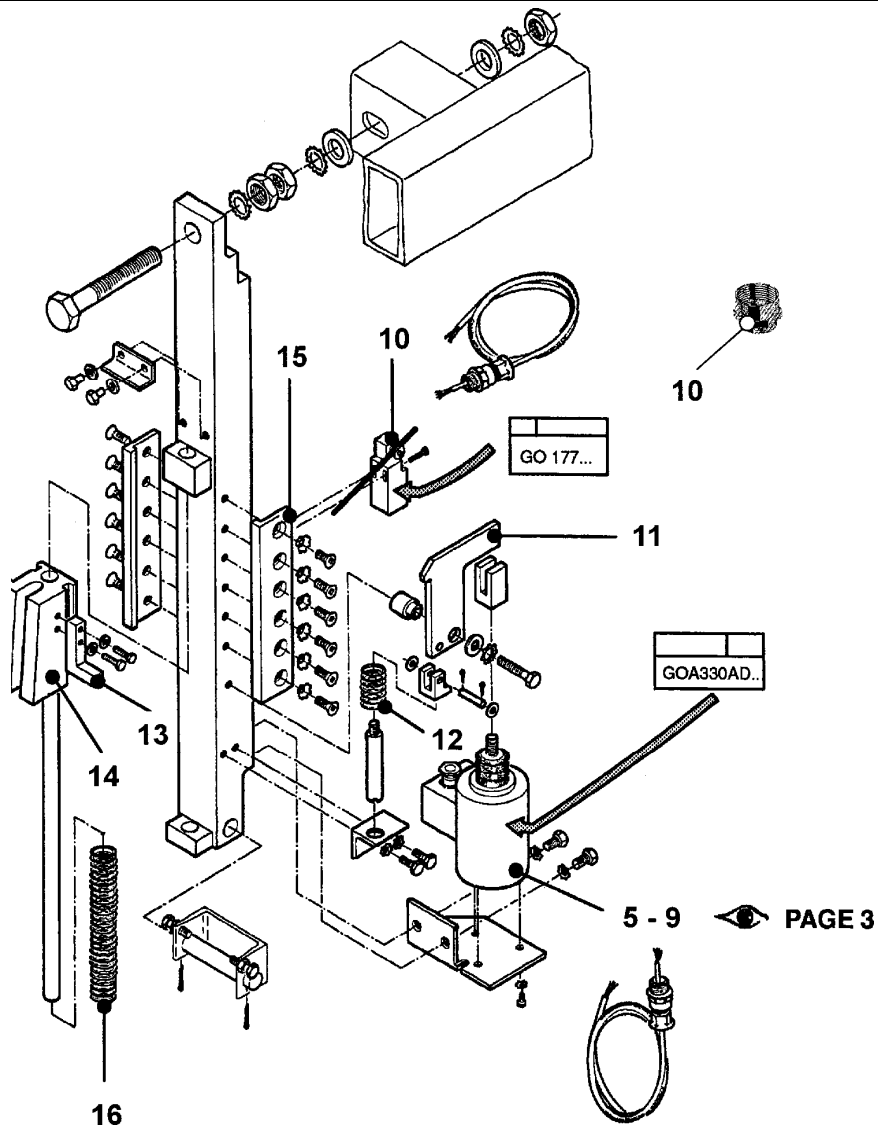
VINTAGE G.01




REF. No.	PART No.	DESCRIPTION
1	9703EF1	Auxiliary Brake, 230 Volt AC, Indoor
2	9703EF4	Auxiliary Brake, 24 Volt AC, Indoor
3	9703EF9	Auxiliary Brake, 230 Volt AC, Outdoor
4	9703EF12	Auxiliary Brake, 24 Volt AC, Outdoor



VINTAGE G.01

REF. No.	PART No.	DESCRIPTION
5	GOA330AD5 GOA330AD1	Brake Magnet, 230 Volt AC
6	GOA330AD6 GOA330AD2	Brake Magnet, 120 Volt AC
7	GOA330AD7 GOA330AD3	Brake Magnet, 48 Volt AC
8	GOA330AD8 GOA330AD4	Brake Magnet, 24 Volt AC
9	GOA330AD9 GOA330AD10	Brake Magnet, 120 Volt AC



REF. No.	PART No.	DESCRIPTION
	GAA26231A	
10	GO177CE4 GAA177FG4 GBA177FG1 GAA381H1	Switch Adapter (PG11 - M20x1, 5)
11	GO2245J5 GO2215J12	Lever and & 
12	GO90BD1	Spring
13	GO2215J4	Angle and & 
14	GOA415F3	Shoe
15	GO2215J3	Guide and & 
16	GO90BH2	Spring