

Leaflet Description

DAA26170D_SPL replaces DAA26170A_SPL. for SAA code or with double under step lighting.

Leaflet Revisions

Date Revised	Subject Matter Expert	Reason for Revision
2009-05-05	Wan, Ji An	Original Document
2009-11-24	Wan, Ji An	DAA26170-SPL replaces DAA26170A-SPL
2010-01-29	Wan, Ji An	Corrected the revision date at bottom
2013-03-08	Wan, Ji An	Page 5: add Part No. DAA195AY1 and diagram
2013-03-21	Wan, Ji An	Page 6: GAA483BH1 changed to GBA483CBH1, GAA483BH2 changed to GBA483CBH2; GO483YC1 changed to GOA483YC1, GO483YC1 changed to GOA483YC2
2015-08-31	Kong, Xiangfa	Update leaflet description.
2016-03-15	Kong, Xiangfa	Change illustration of cover page, and add DAA26170D illustration on page 3, 4 & 6.
2017-09-15	Wan, JiAn	Delete REF. No. 17, add REF. No. 17a, 17b & 17c on page 5.

Related Drawings

Drawing No.	Title	Drawing No.	Title
DAA26170D	Main Drive		

Related Documents

Document ID	Title
BOM DAA26170D	Main Drive

Subject Matter Expert

Name	Department
Wan, Ji An	SIT-Guangzhou

About Spare Parts Leaflets...

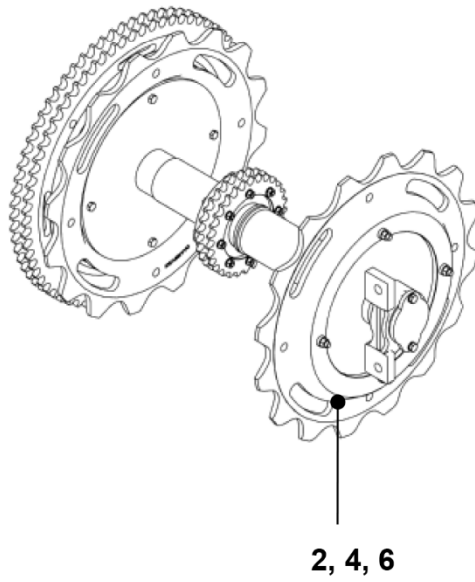
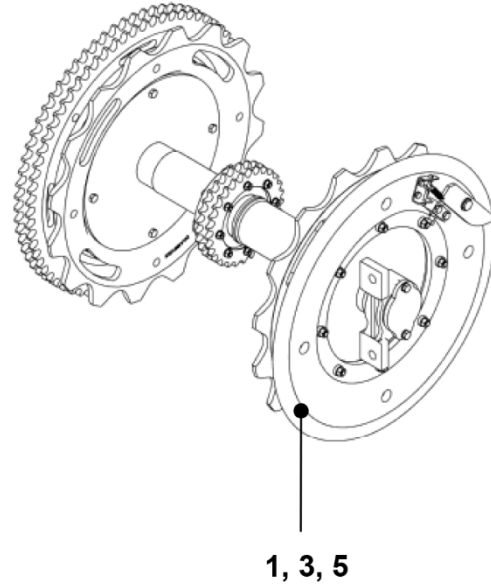
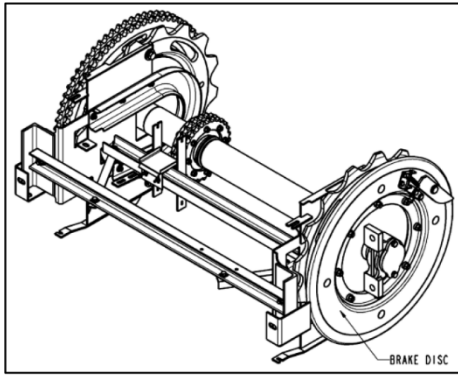
This document lists the lowest replaceable units (LRUs) for the standard version of the product. The LRUs are chosen by a team of Otis associates representing engineering and manufacturing.

While goal of this document is to make parts identification as easy as possible, the document cannot be all-inclusive. Elevator and escalator contracts classified as "special" or "custom" are not addressed here. For such contracts, please refer to specified information, the contract folder, TIPs, Field Education Articles, Construction Letters, etc. for further information.

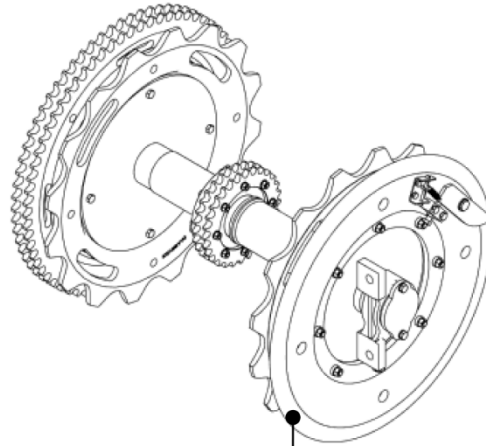
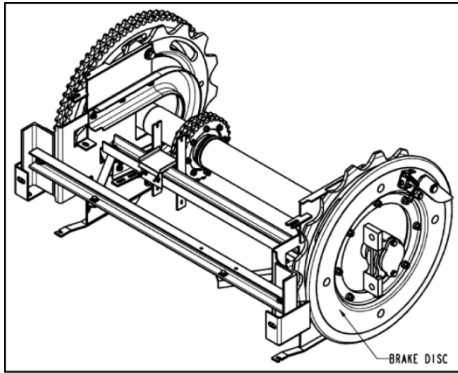
If you have any suggestions about this document, please contact the subject matter expert listed on this page.

508NCE Escalator Main Drive

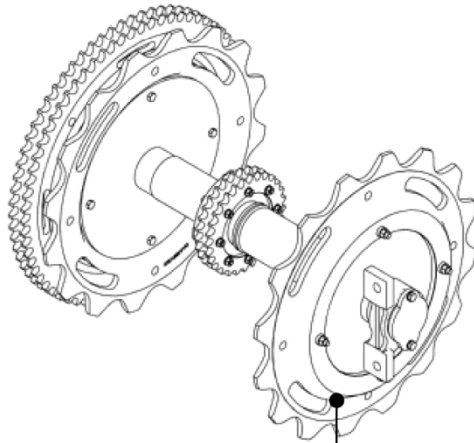
51-DAA26170D



DAA26170D			
REF. No.	PART No.	DESCRIPTION	TYPE
1	DAA26170A1	Main drive with brake disc	Indoor
2	DAA26170A2	Main drive without brake disc	
3	DAA26170A3	Main drive with brake disc	
4	DAA26170A4	Main drive without brake disc	
5	DAA26170A5	Main drive with brake disc	
6	DAA26170A6	Main drive without brake disc	
			600
			800
			1000



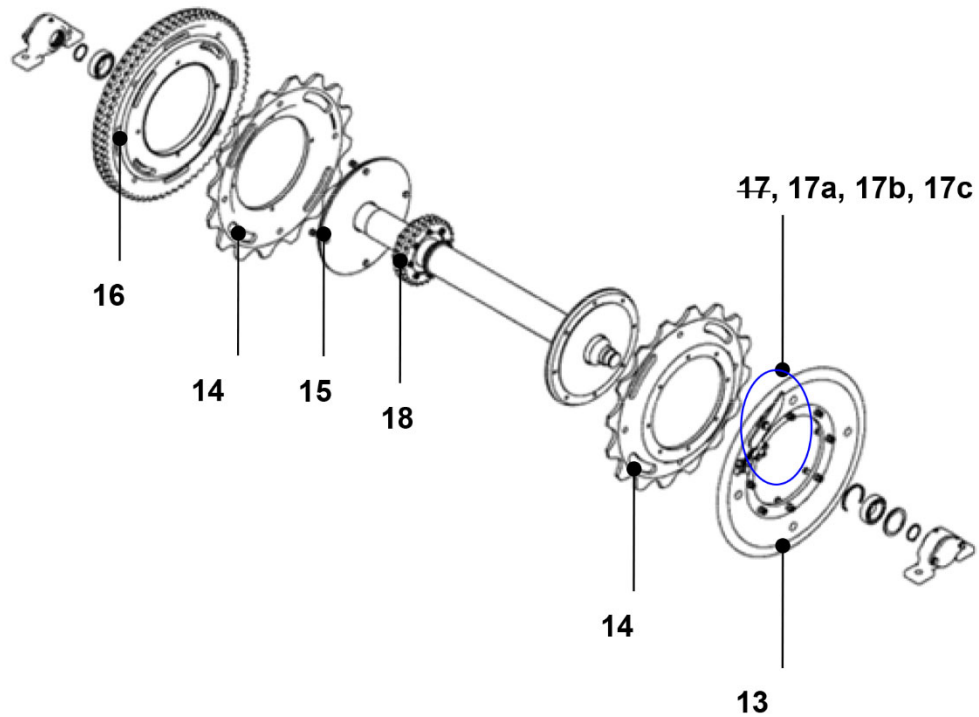
7, 9, 11



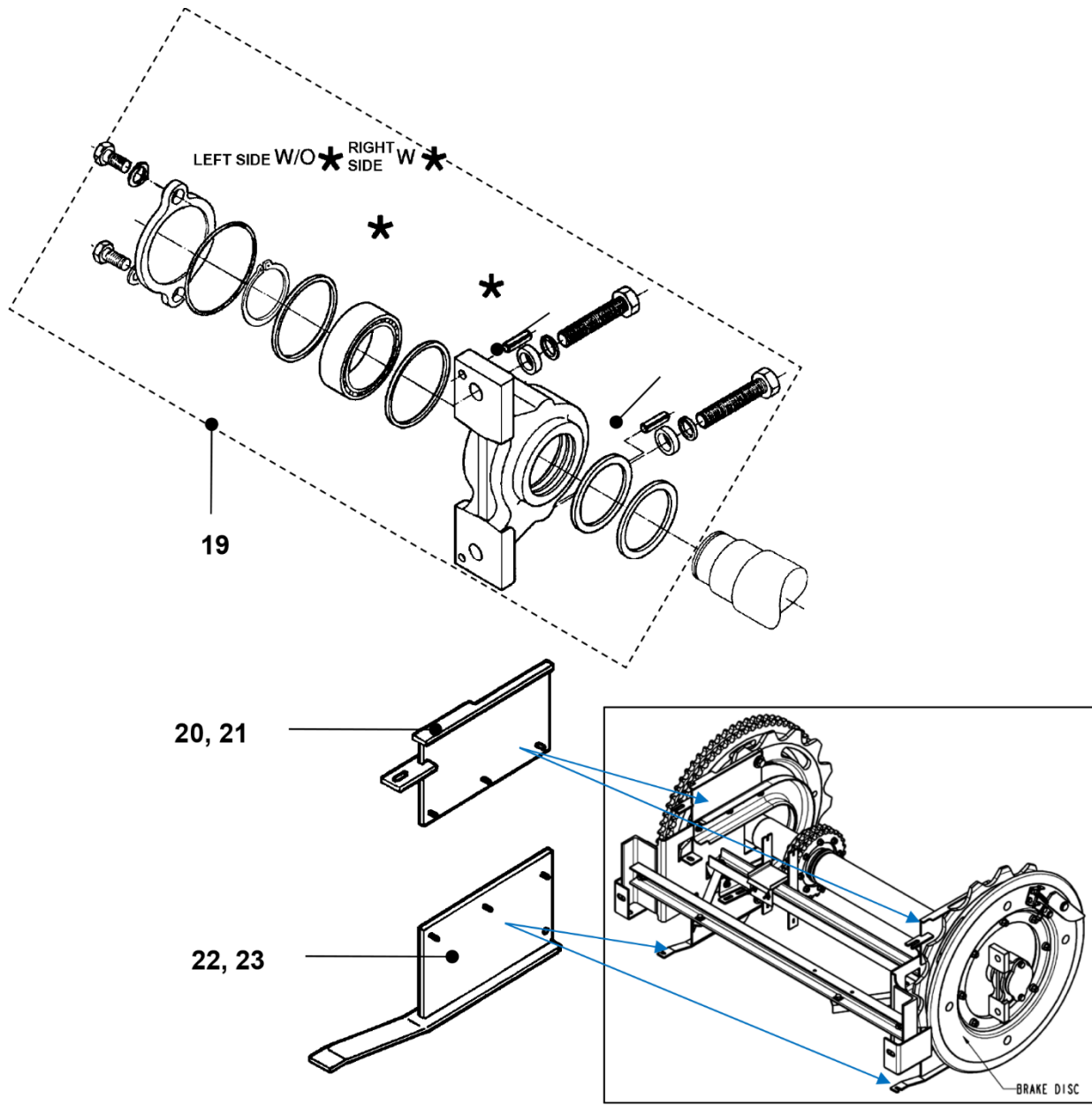
8, 10, 12

DAA26170D

REF. No.	PART No.	DESCRIPTION	TYPE
7	DAA26170A101	Main drive with brake disc	600
8	DAA26170A102	Main drive without brake disc	
9	DAA26170A103	Main drive with brake disc	800
10	DAA26170A104	Main drive without brake disc	
11	DAA26170A105	Main drive with brake disc	1000
12	DAA26170A106	Main drive without brake disc	



DAA26170D		
REF. No.	PART No.	DESCRIPTION
13	GO196AA1	Brake pulley, wedge type
14	DAA195V1	Sprocket
15	GO2215H11	Screw
16	GO195JW1	Sprocket
47	GO2215H26	Set: lever for brake shoe return
17a	GO288FY1	Lever
17b	GO63AA1	Hex. screw
17c	GO91D1	Spring
18	DAA195AY1	Sprocket (Apply some glue: Loctite 243)



DAA26170D		
REF. No.	PART No.	DESCRIPTION
19	GO2215H13	Bearing assembly
20	GOA483YC1	Transition track, left side
21	GOA483YC2	Transition track, right side
22	GBA483BH1	Transition track, left side
23	GBA483BH2	Transition track, right side