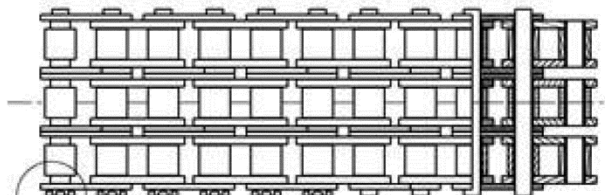
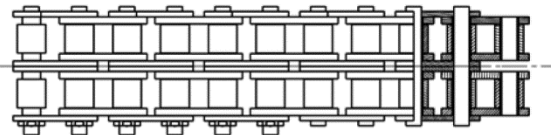
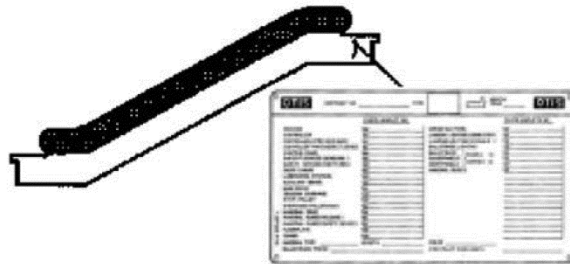


Escalator and Travolator Main Drive Chain

Spare Parts Leaflet

51-DAA332M

December 30, 2013 / Page 1 of 4



OTIS

SERVICE ENGINEERING
Otis Elevator Company
Bloomfield, Connecticut USA

Unpublished Work—© Otis Elevator Co.; 2013

Leaflet Description

Escalator and travelator main drive chain – 508NCE / 512NCE / 515NPE-S / 515NPE-L / Link V2.8 / 520NPE / 606NCT.

Leaflet Revisions

Date Revised	Subject Matter Expert	Reason for Revision
May 5, 2009	Wan, Ji An	Original document
November 24, 2009	Wan, Ji An	Changed as per LRU
July 31, 2012	Zhang, Hengxun	Add split pin as spare part in ODS
December 30, 2013	Kong, Xiangfa / Cao, Qizhang	Add ref. No. 3-7 on p. 4

Related Drawings

Drawing No.	Title	Drawing No.	Title
DAA332M	Chain	DAA27076BD	Main Drive (ODS)
DAA27076BC	Main Drive (ODS)	GAA27076FS	Main Drive (ODS)

Related Documents

Document ID	Title
DAA27076KB	Main Drive (ODS)

Subject Matter Expert

Name	Department
Kong, Xiangfa / Cao, Qizhang	SIT-GUANGZHOU

About Spare Parts Leaflets...

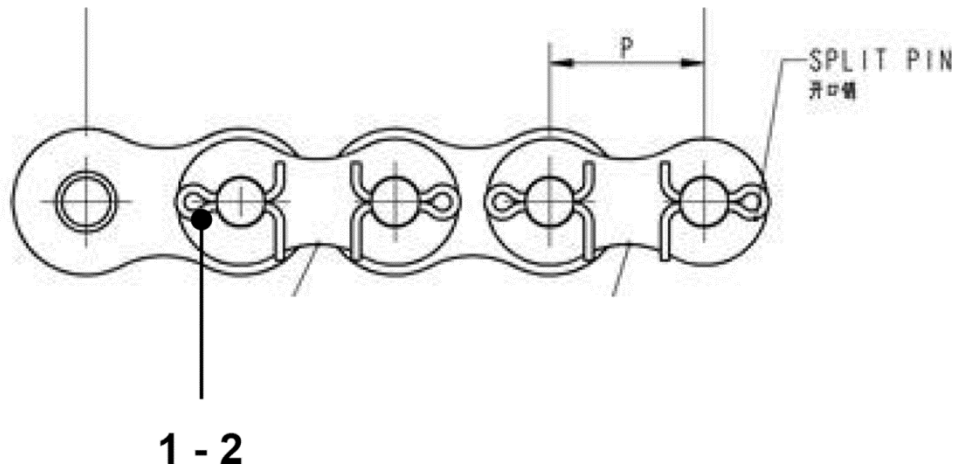
This document lists the lowest replaceable units (LRUs) for the standard version of the product. The LRUs are chosen by a team of Otis associates representing engineering and manufacturing.

While goal of this document is to make parts identification as easy as possible, the document cannot be all-inclusive. Elevator and escalator contracts classified as “special” or “custom” are not addressed here. For such contracts, please refer to specified information, the contract folder, TIPS, Field Education Articles, Construction Letters, etc. for further information.

If you have any suggestions about this document, please contact the subject matter expert listed on this page.

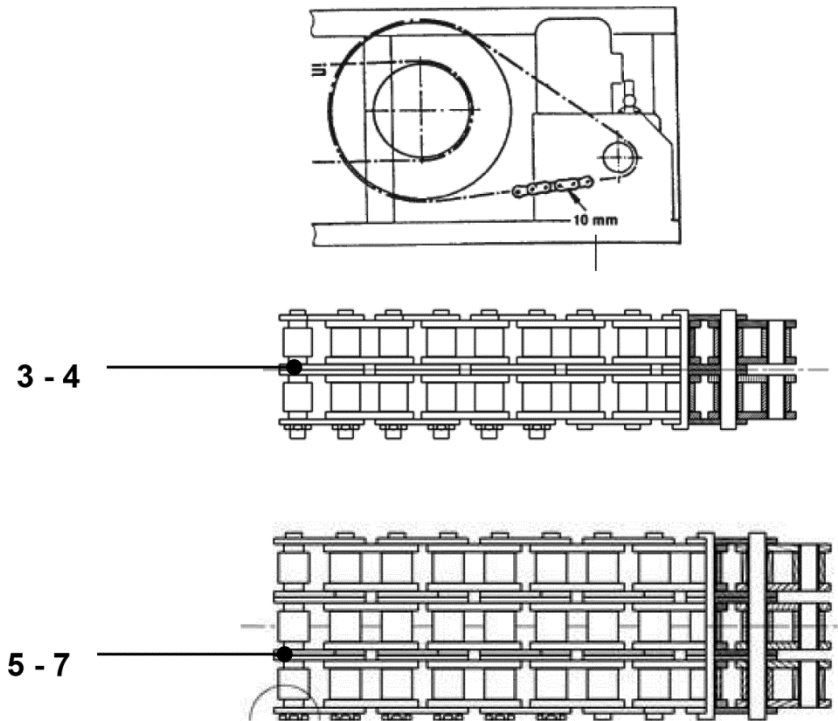
Escalator and Travolator Main Drive Chain

51-DAA332M



REF. No.	PART No.	DESCRIPTION
	DAA332M	
1	GB91/3.2×20-Z	Split Pin for ISO606 20A_2 and ISO606 20A_3
2	GB91/4x22-Z	Split Pin for ISO606 24B_3

Escalator and Travolator Main Drive Chain



REF. No.	PART No.	DESCRIPTION	
	DAA332M		
3	DAA332M1	Driving Chain-Machine to Main Drive, Duplex, 20A	508NCE / LINK / 515NPE / 512NCE / 520NPE / 606NCT
4	DAA332M2	Driving Chain-Machine to Main Drive, Reinforce Duplex, 20A	508NCE / LINK / 606NCT
5	DAA332M3	Driving Chain-Machine to Main Drive, Triplex, 20A	515NPE / 512NCE / 520NPE
6	DAA332M4	Driving Chain-Machine to Main Drive, Reinforce Triplex, 20A	515NPE / 512NCE
7	DAA332M5	Driving Chain-Machine to Main Drive, Triplex, 24B	520NPE