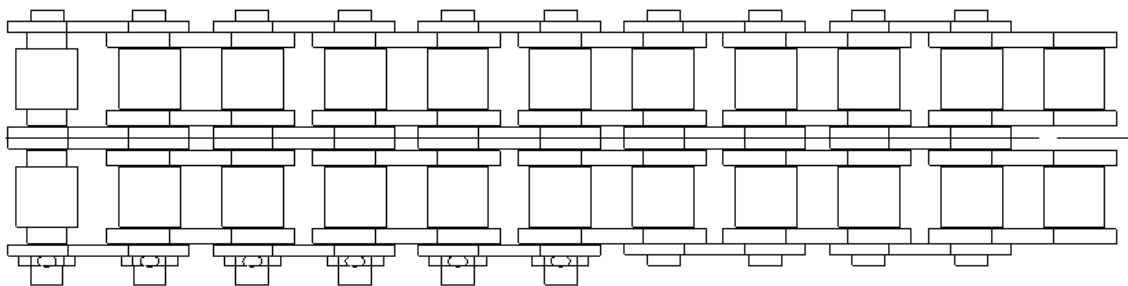


# ESCALATOR MAIN DRIVE CHAIN

**Spare Parts Leaflet**

**54 - HE0702A**

16/05/2019 / Page 1 of 4



Unpublished Work—© Otis Elevator Co.;

**OTIS**

**Safety First!**

**ESCALATOR ENGINEERING**  
Otis Elevator Company  
**OTIS ENGINEERING CHINA**  
**ESCALATOR**

# ESCALATOR

## 54 - HE0702A

# History

## Leaflet Description

MAIN DRIVE CHAIN

### Leaflet Revisions

Date Revised	Subject Matter Expert	Reason for Revision
May 16, 2019	Zheng Xinjin	Full update (CN NO.:CNT1900819)

### Related Drawings

Drawing No.	Title	Drawing No.	Title
HAA332B	MAIN DRIVE CHAIN		
Document ID	Title		
HE0702A	ODS - MAIN DRIVE CHAIN		
HAA332B	PART - Main drive chain		

### Subject Matter Expert

Name	Department
Zheng Xinjin	SIT

### About Spare Parts Leaflets...

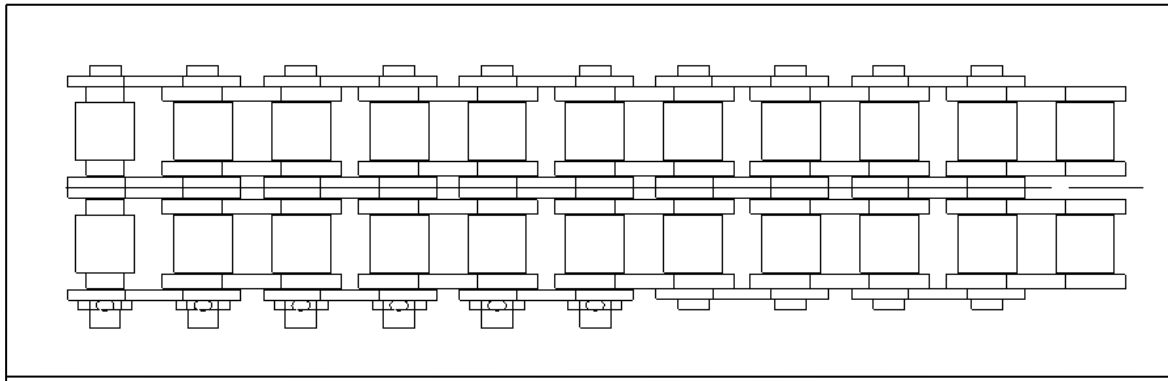
This document lists the lowest replaceable units (LRUs) for the standard version of the product. The LRUs are chosen by a team of Otis associates representing engineering and manufacturing.

While goal of this document is to make parts identification as easy as possible, the document cannot be all-inclusive. Elevator and escalator contracts classified as "special" or "custom" are not addressed here. For such contracts, please refer to specified information, the contract folder, TIPs, Field Education Articles, Construction Letters, etc. for further information.

If you have any suggestions about this document, please contact the subject matter expert listed on this page.

# ESCALATOR MAIN DRIVE CHAIN

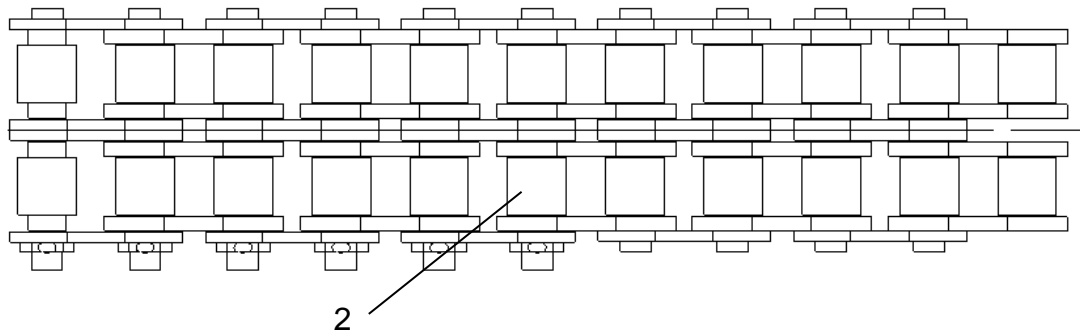
**Spare Parts Leaflet  
54- HE0702A**



<b>HE0702A</b>			
<b>REF. No.</b>	<b>PART No.</b>	<b>H</b>	<b>DESCRIPTION</b>
1	HAA332B999	(0,7600]	MAIN DRIVE CHAIN
	HAA332B996	(7600,8600]	

# ESCALATOR MAIN DRIVE CHAIN

**Spare Parts Leaflet  
54- HE0702A**



<b>HE0702A</b>				
<b>REF. No.</b>	<b>Chain Unit Qty.</b>	<b>FREQ</b>	<b>MACHTYPEsec</b>	<b>MOTRKW</b>
2	98	50,60	EMC-W1	7.5,9
	100	60	EMC-W1	9.5,11,13,15
	104	50	EMC-W1	9.5,11,13,15
	102	50	EC2_7	7.5,9.5
	104	60	EC2_7	7.5,9.5
	102	50	EC2_25	11.7,15
	104	60	EC2_25	11.7,15