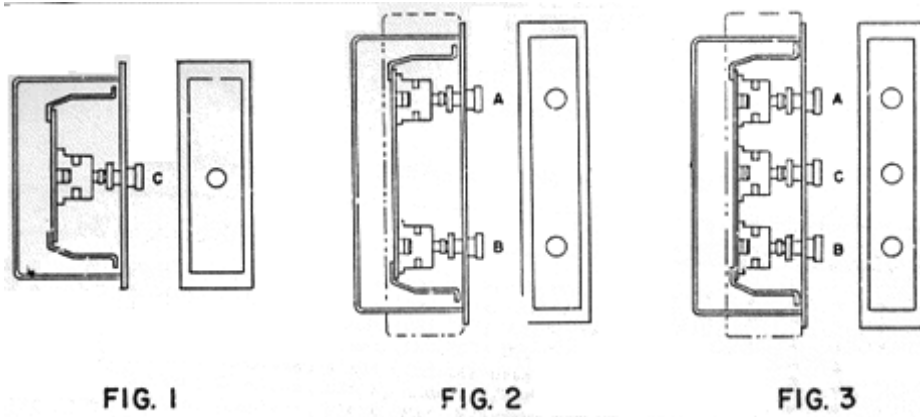


November 15, 1963

Page 1



C-1032 - Type 6600A Hall Button Fixtures (With Buttons Only)

Page 2

HALL BUTTON FIXTURES

REPLACEMENT PARTS OF BRACKET ASSEMBLIES ML 6600A-

PART NO.	LOC.	DESCRIPTION	Fig No. ® Sec. No. ®	2	2	1	2	3	2	1
				79	80	83	86	89	90	95
339FG1	A	Clip, Single Unit		-	1	-	1	1	1	-
339FG1	B	Clip, Single Unit		-	1	-	-	1	1	-
339FG1	C	Clip, Single Unit		-	-	1	-	1	-	-
339FG2	A	Clip, Double Unit		1	-	-	-	-	-	-
339FG2	B	Clip, Double Unit		1	-	-	1	-	-	-
339FG2	C	Clip, Double Unit		-	-	-	-	-	-	1
7035A8 For details, see Parts Leaflet C-1021.	B	Unit, Button, W/Clip (single make-break Contact)			-	-	-	1	1	-
7035A9 For details, see Parts Leaflet C-1021.	A	Unit, Button, W/Clip (single making Contact)			1	-	1	1	1	-
7035A9 For details, see Parts Leaflet C-1021.	B	Unit, Button, W/Clip (single making Contact)		-	1	-	-	-	-	-
7035A9 For details, see Parts Leaflet C-1021.	C	Unit, Button, W/Clip (single making Contact)		-	-	1	-	1	-	-
7035A11 For details, see Parts Leaflet C-1021.	A	Unit, Button, W/Clip (double making Contact)		1	-	-	-	-	-	-
7035A11 For details, see Parts Leaflet C-1021.	B	Unit, Button, W/Clip (double making Contact)		1	-	-	1	-	-	-
7035A11 For details, see Parts Leaflet C-1021.	C	Unit, Button, W/Clip (double making Contact)		-	-	-	-	-	-	1

C-1032 - Type 6600A Hall Button Fixtures (With Buttons Only)

REPLACEMENT PARTS OF FACEPLATE ASSEMBLIES* ML B147AK-

PART NO.	LOC.	DESCRIPTION	Fig. No. ® Sec. No. ®	2	1	3	2	2	1
				302	303	304	305	309	313
323BD2 <i>For details of Buttons, see Fig. 4.</i>	C	Button, Complete, Black, unmkd. W/O Spring		-	1	-	-	-	-
323BD2 <i>For details of Buttons, see Fig. 4.</i>	A-B	Button, Complete, Black (Mkd. W/Arrow) W/O Spring		-	-	-	-	2	-
323BD2 <i>For details of Buttons, see Fig. 4.</i>	B	Button, Complete, Black (Mkd."C") W/O Spring		-	-	1	1	-	-
323BD2 <i>For details of Buttons, see Fig. 4.</i>	A	Button, Complete, Black (Mkd."S") W/O Spring		-	-	-	1	-	-
323BD2 <i>For details of Buttons, see Fig. 4.</i>	A-C	Button, Complete, Black (Mkd.per order) W/O Spring		-	-	2	-	-	-
323BD3 <i>For details of Buttons, see Fig. 4.</i>	C	Button, Complete, Black, unmkd. W/Spring		-	-	-	-	-	1
323BD3 <i>For details of Buttons, see Fig. 4.</i>	A-B	Button, Complete, Black (Mkd. W/Arrow) W/Spring		2	-	-	-	-	-
-	-	Screw, 10-32 x 1/2" 1g, Phillips Rec. Oval Mach		2	2	2	2	2	2

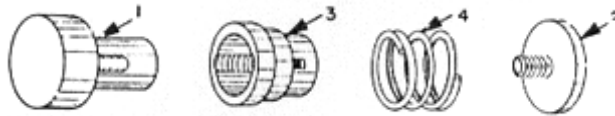


FIG. 4

PARTS FOR 323BD BUTTONS - FIG. 4

REF. NO.	PART NO.	QUANTITY	DESCRIPTION
1	323BD1	1	Button, Top, 1-1/32" dia., black (specify marking)
1	323BD6	1	Button, Top, 1-1/32" dia., red (specify marking)
2	A323AF3	1	Button, Bottom, black (used W/Button Assem. 323BD2, 3 & 7)
2	A323AF6	1	Button, Bottom, black (used W/Button Assem. 323BD4)
3	A385AV1	1	Guide
4	90YA26	1	Spring, Compression

* Faceplate Assemblies include the Faceplate and the material listed in corresponding columns