

C-1033A - Type 6600A Hall Button Fixtures (Buttons with Lamps)

November 1, 1968

Page 1

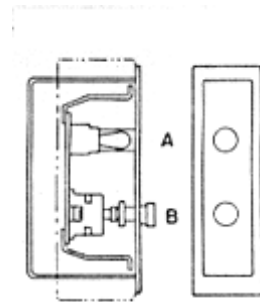


FIG. 1

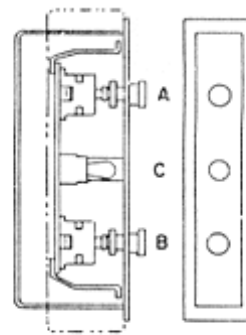


FIG. 2

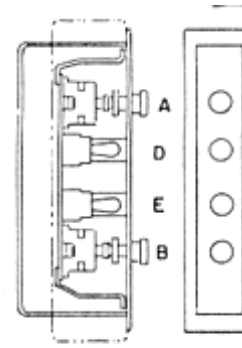


FIG. 3

C-1033A - Type 6600A Hall Button Fixtures (Buttons with Lamps)

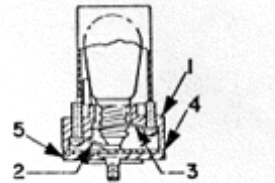
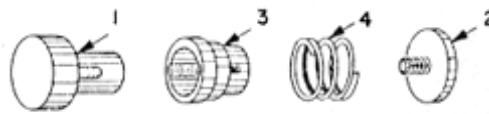


FIG. 4

LAMPS, RECEPTACLES AND SHIELDS - FIG. 4  
 M.L. 2226A1: Individual Connection  
 M.L. 2226A2: Single Bus Bar Connection

REF. NO.	PART NO.	DESCRIPTION	ML 2226A-	
			1	2
	6644A2	Receptacle Base Assembly, consisting of:	1	-
1		1-Base 306AS1	-	-
2		1-Contact, formed strip, bronze 152AF1	-	-
3		1-Contact, formed strip, brass 152AG1	-	-
-		2-Terminal 187AA5	-	-
	6644A3	Receptacle Base Assembly, consisting of:	-	1
1		1-Base 306AS1	-	-
2		1-Contact, formed strip, bronze 152AF1	-	-
3		1-Contact, formed strip, brass 152AG1	-	-
-		1-Terminal 187AA5	-	-
-		1-Terminal 187AW2	-	-
4	275AJ1	Barrier, Insulating	1	1
5	386TV1	Plate	1	1

**C-1033A - Type 6600A Hall Button Fixtures (Buttons with Lamps)**



**FIG. 5**  
PAIRS FOR 323BD BUTTONS - FIG. 5

REF. NO.	PART NO.	QUAN-TITY	DESCRIPTION
1	323BD1	1	Button, top, 1-1/32" dia., black (specify marking)
1	323BD6	1	Button, top, 1-1/32" dia., red (specify marking)
2	A323AF3	1	Button, bottom, black (used with Button Assembly 323BD2, 3 & 7)
2	A323AF6	1	Button, bottom, black (used with Button Assembly 3235D4)
3	A385AV1	1	Guide
4	90YA26	1	Spring, Compression

## C-1033A - Type 6600A Hall Button Fixtures (Buttons with Lamps)

### HALL BUTTON FIXTURES

#### REPLACEMENT PARTS OF BRACKET ASSEMBLIES ML 6600A-

PART NO	LOC.	DESCRIPTION	Fig. No. Sec. No.	Ù Ù	2	3	2	3	2	3	1	1	3
					84	85	87	88	91	92	93	96	100
339FG1	A	Clip, Single Unit			1	1	1	1	1	1	-	-	-
339FG1	B	Clip, Single Unit			1	1	-	-	1	1	1	-	-
339FG2	A	Clip, Double Unit			-	-	-	-	-	-	-	-	1
339FG2	B	Clip, Double Unit			-	-	1	1	-	-	-	1	1
424H1	A	Lamp, 120 Volts			-	-	-	-	-	-	1	1	-
424H1	C	Lamp, 120 Volts			1	-	1	-	1	-	-	-	-
424H1	D-E	Lamp, 120 Volts			-	2	-	2	-	2	-	-	2
2226A1 <i>For details, see Fig. 4.</i>	A	Receptacle, Lamp			-	-	-	-	-	-	1	1	-
2226A1 <i>For details, see Fig. 4.</i>	C	Receptacle, Lamp			1	-	1	-	1	-	-	-	-
2226A1 <i>For details, see Fig. 4.</i>	D-E	Receptacle, Lamp			-	2	-	2	-	2	-	-	2
278AD2	A	Shield, Light			-	-	-	-	-	-	1	1	-
278AD2	C	Shield, Light			1	-	1	-	1	-	-	-	-
278AD2	D-E	Shield, Light			-	2	-	2	-	2	-	-	2
7035A8 <i>For details, see Parts Leaflet C-1021.</i>	B	Unit, Button, W/Clip (single make-break Contact)			-	-	-	-	1	1	-	-	-
7035A9 <i>For details, see Parts Leaflet C-1021.</i>	A	Unit, Button, W/Clip (single making Contact)			1	1	1	1	1	1	-	-	-
7035A9 <i>For details, see Parts Leaflet C-1021.</i>	B	Unit, Button, W/Clip (single making Contact)			1	1	-	-	-	-	1	-	-
7035A11 <i>For details, see Parts Leaflet C-1021.</i>	A	Unit, Button, W/Clip (double making Contact)			-	-	-	-	-	-	-	-	1
7035A11 <i>For details, see Parts Leaflet C-1021.</i>	B	Unit, Button, W/Clip (double making Contact)			-	-	1	1	-	-	-	1	1



**C-1033A - Type 6600A Hall Button Fixtures (Buttons with Lamps)**

<i>Jewels are cast as part of Faceplate.</i>	E	Jewel (marked with DOWN Arrow)	-	-	-	-	-	-	-	-	-	-	1	1
<i>Jewels are cast as part of Faceplate.</i>	C	Jewel (marked CAR-HERE)	-	1	-	-	1	-	-	-	-	-	-	-
<i>Jewels are cast as part of Faceplate.</i>	E	Jewel (marked C AR-HERE)	-	-	1	-	-	1	-	-	-	-	-	-
<i>Jewels are cast as part of Faceplate.</i>	A	Jewel (marked IN-USE)	-	-	-	-	-	-	1	1	-	-	-	-
<i>Jewels are cast as part of Faceplate.</i>	C	Jewel (marked IN-USE)	1	-	-	1	-	-	-	-	-	-	-	-
<i>Jewels are cast as part of Faceplate.</i>	D	Jewel (marked IN-USE)	-	-	1	-	-	1	-	-	-	-	-	-
-	-	Screw, #10-32 x 1/2" long,												
		Phillips Rec. Oval Machine	2	2	2	2	2	2	2	2	2	2	2	2

*\* Faceplate Assemblies include the Faceplate and the material in corresponding columns.*