

**Hydraulic Elevator  
w/ Type 7B  
Hydraulic Machine**

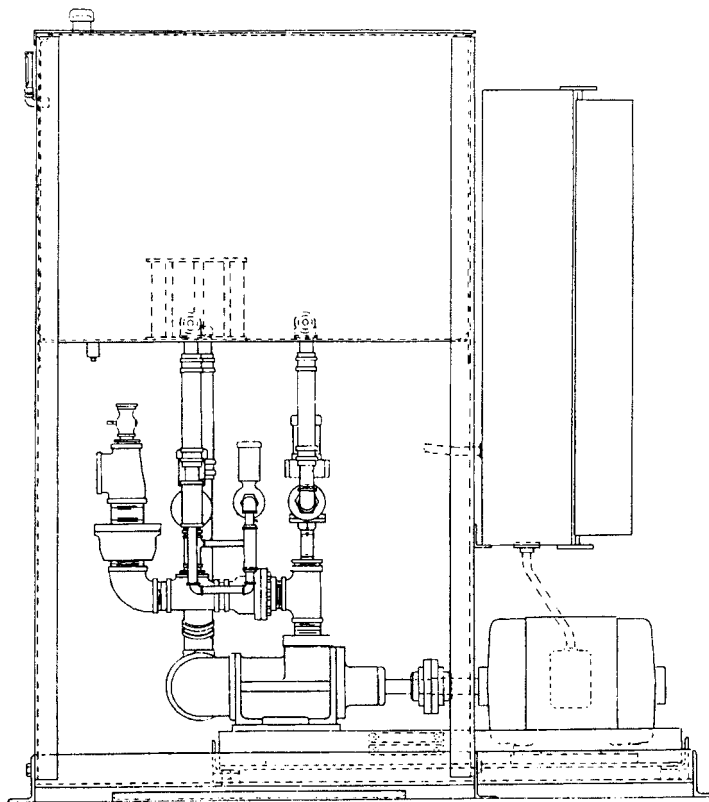
**Spare Parts Leaflet  
C-1050**

**May 18, 2022 / Page 1 of 11**

# OBSOLESCENCE NOTICE

The product covered in this SPL has been designated as obsolete and is no longer supported. See TIP 32.2-1, *Obsolete Components*, for potential upgrade. Replacement lower level parts listed within and unique to this design are not being restocked when depleted. Some of these parts, depending on availability and other factors, may be quoted through Customer Service, but most will have extended lead times and increased cost due to low volume production.

**New York Design**



**Typical Illustration**

NOTE: For Lubrication and Hydraulic Oil, see Lubrication Chart Form #2422H.  
ORDER FORM O-352G

**OTIS**

This document does not contain any  
technical data subject to EAR or ITAR

**SERVICE ENGINEERING  
Otis Elevator Company  
Bloomfield, Connecticut USA**

Unpublished Work—© Otis Elevator Co.; 2022

**Leaflet Description**

This leaflet provides information for replacement parts for the New York Design hydraulic elevator, also known as plunger electric elevator, with type 7B machine, direct driven pump and EECO valves.

**Leaflet Revisions**

<b>Date Revised</b>	<b>Subject Matter Expert</b>	<b>Reason for Revision</b>
May 16, 1966	---	---
June 1, 1997	---	---
July 31, 2003	Troy Chicoine	Add minor repair kits (p/n AAA27076AX4-6).
May 18, 2022	Brian Regan	Updated document template and obsolescence info

**Related Drawings**

<b>Drawing No.</b>	<b>Title</b>	<b>Drawing No.</b>	<b>Title</b>
---	---	---	---
---	---	---	---

**Related Documents**

<b>Document ID</b>	<b>Title</b>
---	---
---	---

**Subject Matter Expert**

<b>Name</b>	<b>Department</b>
Brian Regan	OSC Service Engineering

**About Spare Parts Leaflets...**

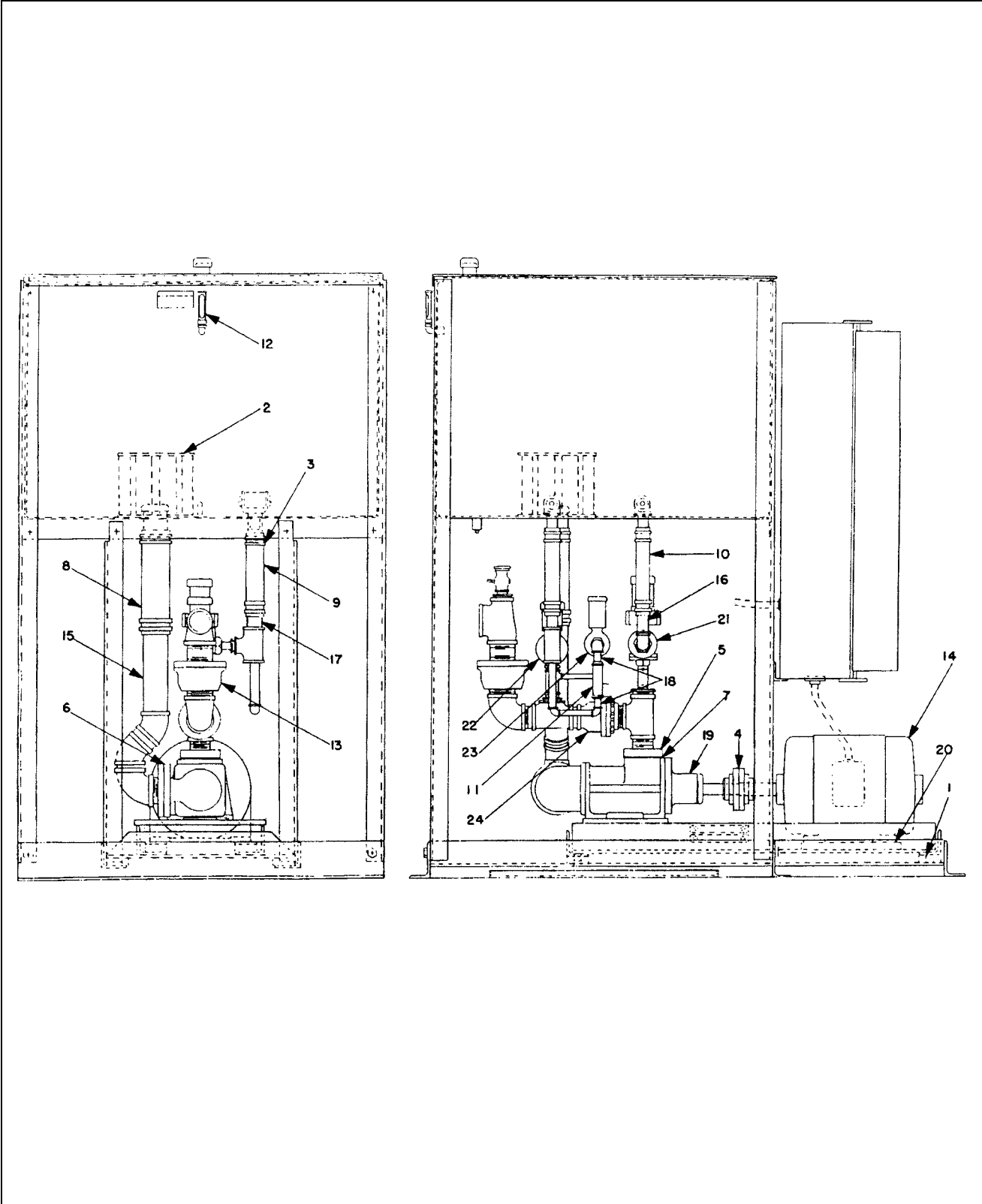
This document lists the lowest replaceable units (LRUs) for the standard version of the product. The LRUs are chosen by a team of Otis associates representing engineering and manufacturing.

While goal of this document is to make parts identification as easy as possible, the document cannot be all-inclusive. Elevator and escalator contracts classified as “special” or “custom” are not addressed here. For such contracts, please refer to specified information, the contract folder, TIPs, Field Education Articles, Construction Letters, etc. for further information.

If you have any suggestions about this document, please contact the subject matter expert listed on this page.

# Type 7B Hydraulic Machine

C-1050

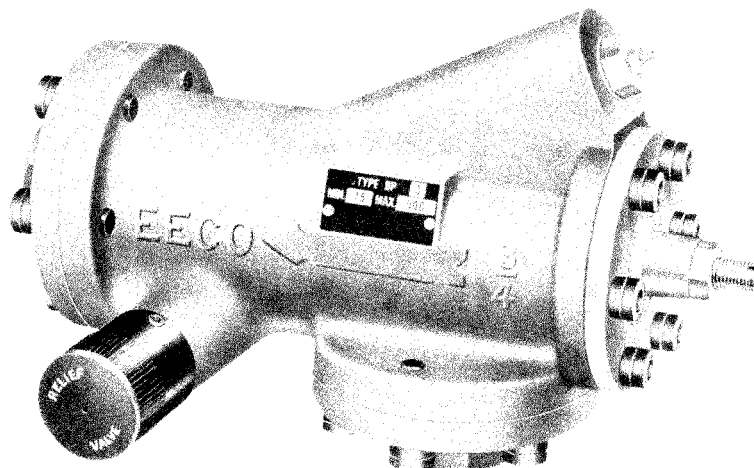


**C-1050****Type 7B Hydraulic Machine****Type 7B Hydraulic Machine**

Order Form O-352G and R-352G  
Material List 2223F3 and 2084E6

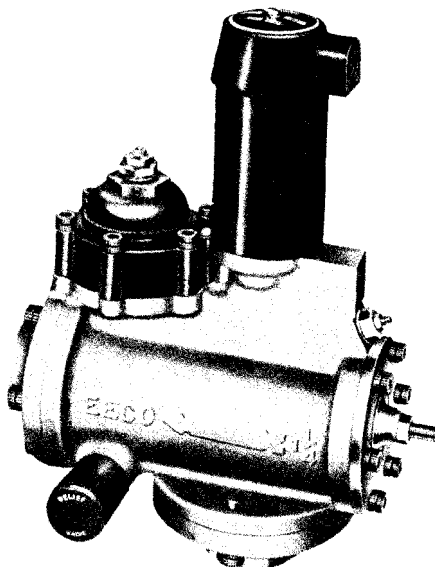
REF. NO.	PART NO.	DESCRIPTION
1	310BE3	Block, Rubber, 3" Wide, 3" Long, 1" Thick
2	254D4 B254D1	Bonnet, Oil Filter (for Oil Tank)
3	336DY1	Clamp, Hose
---	6926AE1	Clamp, Hose Shut-Off
4	---	Coupling. See page 10.
8	134A7	Hose, 2.25" ID, 16.5" Long (for Tank to Pump)
9	134A1	Hose, 2.25" ID, 11.875" Long (for Tank to Valve)
10	134A15	Hose, 1.25" ID, 12.5" Long (for Tank to Valve)
11	134A21	Hose, 1" ID, 5" Long (for Tank to Valve)
12	269AW1	Indicator, Oil
13	6944A1	Isoline. See page 10.
14	---	Motor. See page 6.
15	441AH22	Pipe, Half-Nipple, 2" Std., 13.5" Long (for Hose 134A7)
16	441AH16	Pipe, Half-Nipple, 1" Std., 6" Long (for Hose 134A15)
17	441AH21	Pipe, Half-Nipple, 2" Std., 3.75" Long (for Hose 134A1)
18	441AH23	Pipe, Half-Nipple, 0.75" Std., 2" Long (for Hose 134A21)
19	6962J3 6962T1	Pump. See page 7.
20	255AB13	Shim, Steel, 2.5" Wide, 2.5" Long, 0.0299" Thick (for Motor)
20	255AB14	Shim, Steel, 2.5" Wide, 2.5" Long, 0.0598" Thick (for Motor)
21	---	Valve, Bypass (used when up-leveling not required). See page 5. Valve, Up-Leveling. See page 5.
22	---	Valve, Down. See page 8.
23	---	Valve, Down-Leveling. See page 8.
24	271W3	Valve, Check. See page 7.

**NOTE:** For 7B machine, piping from tank to pump is straight. Reference numbers 6 and 7 are gaskets not required for this machine.



**By-Pass Valve**  
EECO Type BP-3

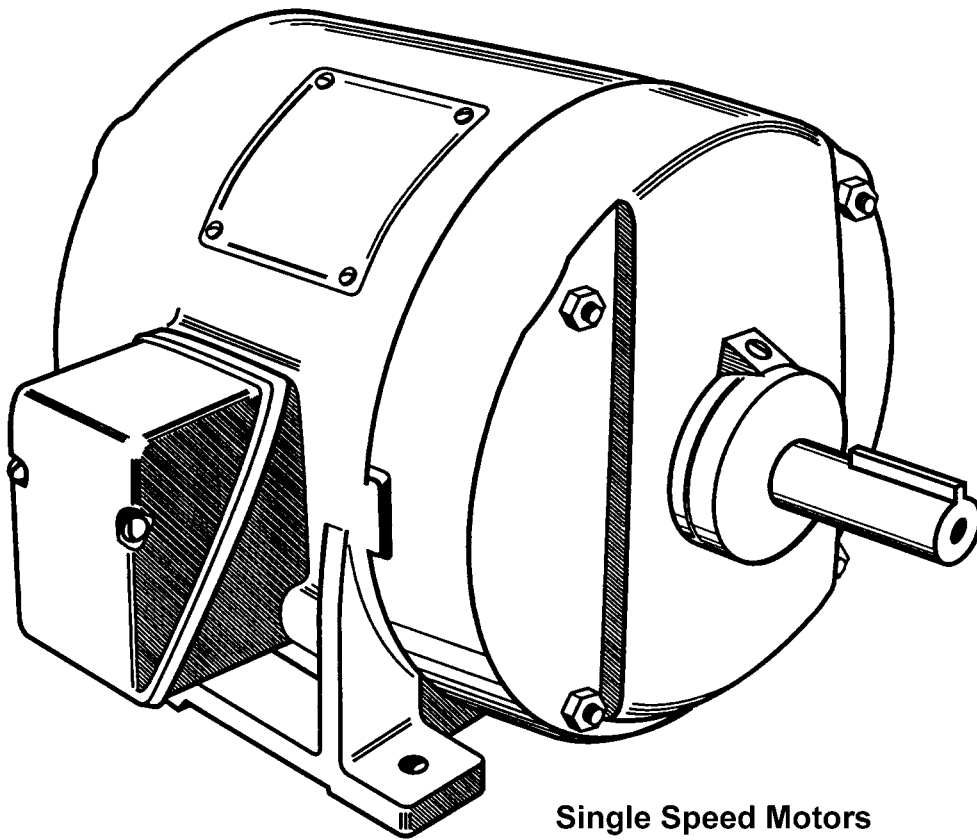
PART NO.	SIZE	DESCRIPTION
271J2	3/4	Valve, Bypass, EECO Type BP-3
271J3	1	Valve, Bypass, EECO Type BP-3



**Up Leveling Valve**  
EECO Type UV-2

PART NO.	SIZE	DESCRIPTION
271P2	3/4	Valve, Up-Leveling, EECO Type UV-2. For replacement of EECO Type UV-2 valve, refer to TIP 6.3.0-12.
271P3	1	Valve, Up-Leveling, EECO Type UV-2. For replacement of EECO Type UV-2 valve, refer to TIP 6.3.0-12.

**Single-Speed Motors**



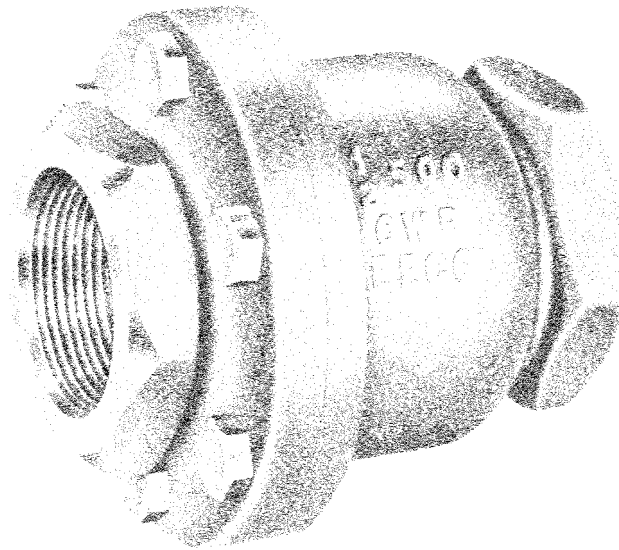
**Single Speed Motors**  
3 Phase, 60 Cycles, A.C., 3600 RPM

<b>PART NO.</b>	<b>W/O VINTAGE</b>		
	<b>VOLTAGE</b>	<b>Name Plate H.P.</b>	<b>Frame No.</b>
A6333T1	208	10	254U
A6333T2	220/440*	10	254U
A6333T3	550	10	254U
A6333W1	208	15	256U
A6333W2	220/440*	15	256U
A6333W3	550	15	256U
A6333Y1	208	20	284U
A6333Y2	220/440*	20	284U
A6333Y3	550	20	284U

\* Specify voltage

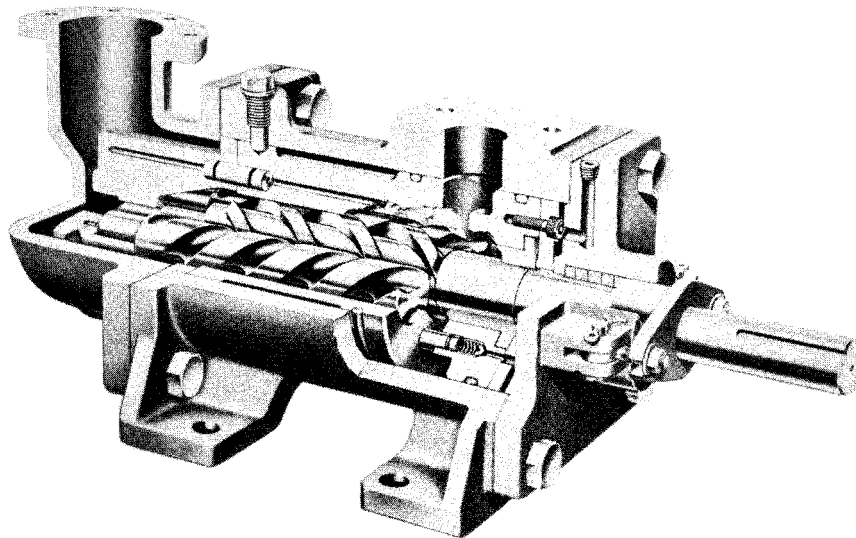
# Check Valve & Pump

C-1050



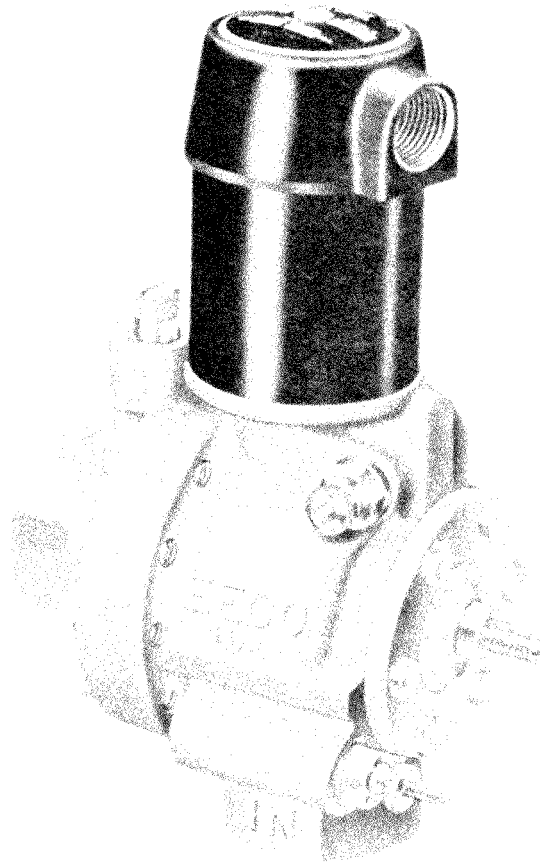
**Check Valve**  
EECO Series 3000

PART NO.	DESCRIPTION
271W3	Valve, Check, EECO Series 3000, Size 2



**De Laval Imo Pump**

PART NO.	DESCRIPTION
6962J3 6962T1	Pump, DeLaval IMO Type 187, 81 GPM, at 3600 RPM
AAA27076AX4	Minor Repair Kit, for IMO Pump Model 3DB-187
AAA27076AX5	Minor Repair Kit, for IMO Pump Model A3DB-187
AAA27076AX6	Minor Repair Kit, for IMO Pump Model G3DB-187

**DL-3 Down & Down-Leveling Valves**

<b>PART NO.</b>	<b>SIZE</b>	<b>DESCRIPTION</b>
271BA4	3/4	Valve, Down, EECO Type DL-3. Replaces EECO Type DL-2 (p/n 271T7 and 271T8). For replacement of EECO Type DL-3 valves, refer to TIP 6.3.0-12.
271BA5	1	Valve, Down, EECO Type DL-3. Replaces EECO Type DL-2 (p/n 271T9). For replacement of EECO Type DL-3 valves, refer to TIP 6.3.0-12.

**NOTE:** The DL-3 valve is identical to the DL-2 valve with an additional throttle.

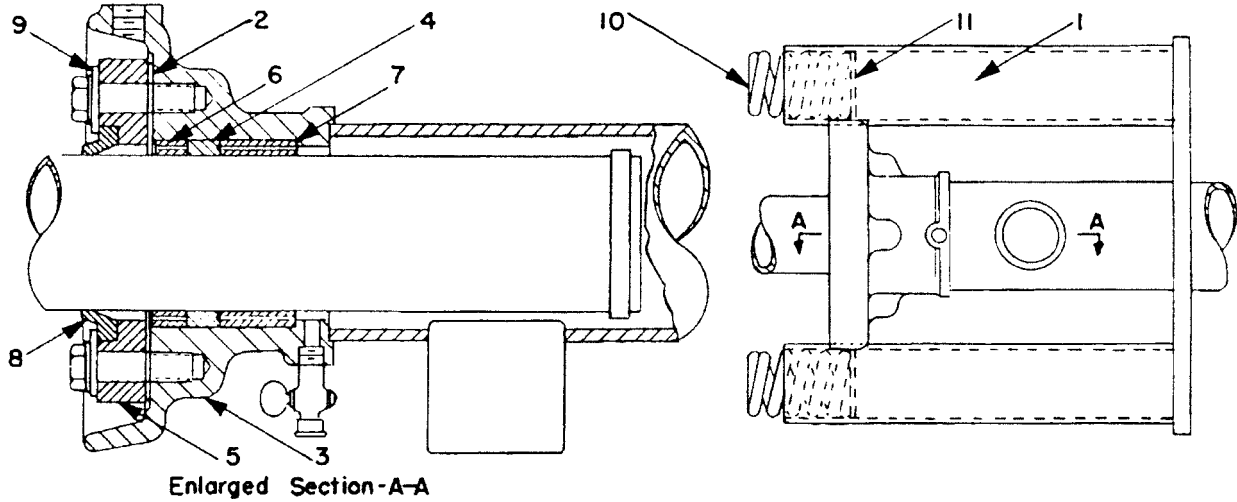
<b>PART NO.</b>	<b>SIZE</b>	<b>DESCRIPTION</b>
271BA1	1/4	Valve, Down-Leveling, EECO Type DL-3. Replaces EECO Type DL-2 (p/n 271T1 and 271T2).
271BA2	3/8	Valve, Down-Leveling, EECO Type DL-3. Replaces EECO Type DL-2 (p/n 271T3 and 271T4).
271BA3	1/2	Valve, Down-Leveling, EECO Type DL-3. Replaces EECO Type DL-2 (p/n 271T5 and 271T6). For replacement of EECO Type DL-3 valves, refer to TIP 6.3.0-12.
271BA4	3/4	Valve, Down-Leveling, EECO Type DL-3. Replaces EECO Type DL-2 (p/n 271T7). For replacement of EECO Type DL-3 valves, refer to TIP 6.3.0-12.

**NOTE:** The DL-3 valve is identical to the DL-2 valve with an additional throttle.



# Cylinder Head Packing & Buffer Data

**C-1050**



**Material List 2223C-  
Drawings 6942AA and 6942Y**

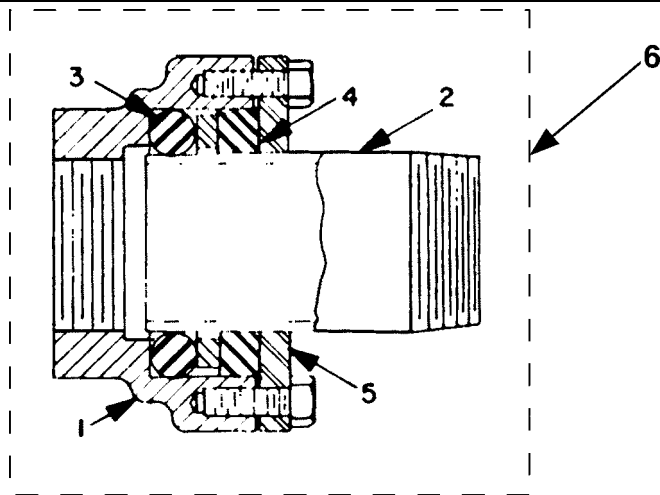
Cylinder Size	Plunger	Ref. 1 Block 2 Req.	Ref. 2 Disogrin Packing 1 Req.	Ref. 3 Bottom Ring 1 Req.	Ref. 4 Top Ring 1 Req.	Ref. 5 Clamp Ring 1 Req.	Ref. 6 Rod ** Req.	Ref. 7 Spring 2 Req.	Ref. 8 Washer 2 Req.	Ref. 9 Wiper Clamp Ring 2 Req.	Ref. 10 Spring ** Req.	Ref. 11 Washer ** Req.
5"	4"	310C11 310C12*	376NG1	A390AMI	182R1	172LL1	172KN1	172KP1	172LG1	172LK1	* 90KD8 90ND5	127VD14
6"	4.5"	310C11 310C12*	376NG2	A390ANI	182R2	172LL2	172KN2	172KP2	172LG2	172LK2	* 90KD8 90ND5	127VD14
8"	5.5"	310C13	376NG3	A390API	182R3	172LL3	172KN3	172KP3	172LG3	172LK3	* 90ND5 90TD4	127VD15
8"	6.5"	310C14	376NG4	A390ARI	182R4	172LL4	172KN4	172KP4	172LG4	172LK4	* 90TD4 90AL2	127XA10
10"	7.5"	310C15	376NG5	A390ASI	182R5	172LL5	172KN5	172KP5	172LG5	172LK5	* 90AL2 90ZD3	127VE8
10"	8.5"	310C15	376NG6	A390ATI	182R6	172LL6	172KN6	172KP6	172LG6	172LK6	* 90AL2 90ZD3	127VE8
12"	9.5"	310C14	376NG7	A390AVI	182R7	172LL7	172KN7	172KP7	172LG7	172LK7	* 90TD4 90AL2	127XA10
12"	10.5"	310C15	376NG8	A390AWI	182R8	182LL8	182KN8	182KP8	182LG8	182LK8	* 90AL2 90ZD3	127VE8
16"	12.5"	310C15	376NG9	A390AXI	182R9	182LL9	182KN9	182KP9	182LG9	182LK9	90ZD3	127VE8

**NOTE:** For cylinder head packing replacement parts, see **SPL 03-6942Y**.

\* Part to be used is determined by the gross load. For replacement, give elevator sales number.

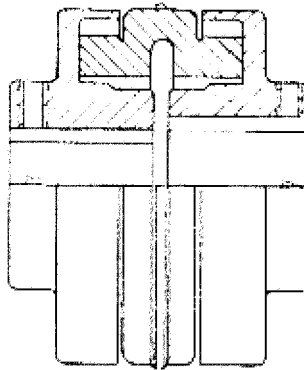
\*\* Quantity variable.

**Couplings**



**Isoline Unit (2" Pipe Line Silenced)**

REF. NO.	PART NO.	DESCRIPTION
1	330CC1	Case, Ductile Iron
2	377BE2	Pipe, 2" Std., Steel
3	182F2	Ring, Packing, Neoprene
4	182G2	Ring, Packing, Neoprene
5	172GY1	Ring, Clamp, Steel
6	6944A1	Isoline, Complete

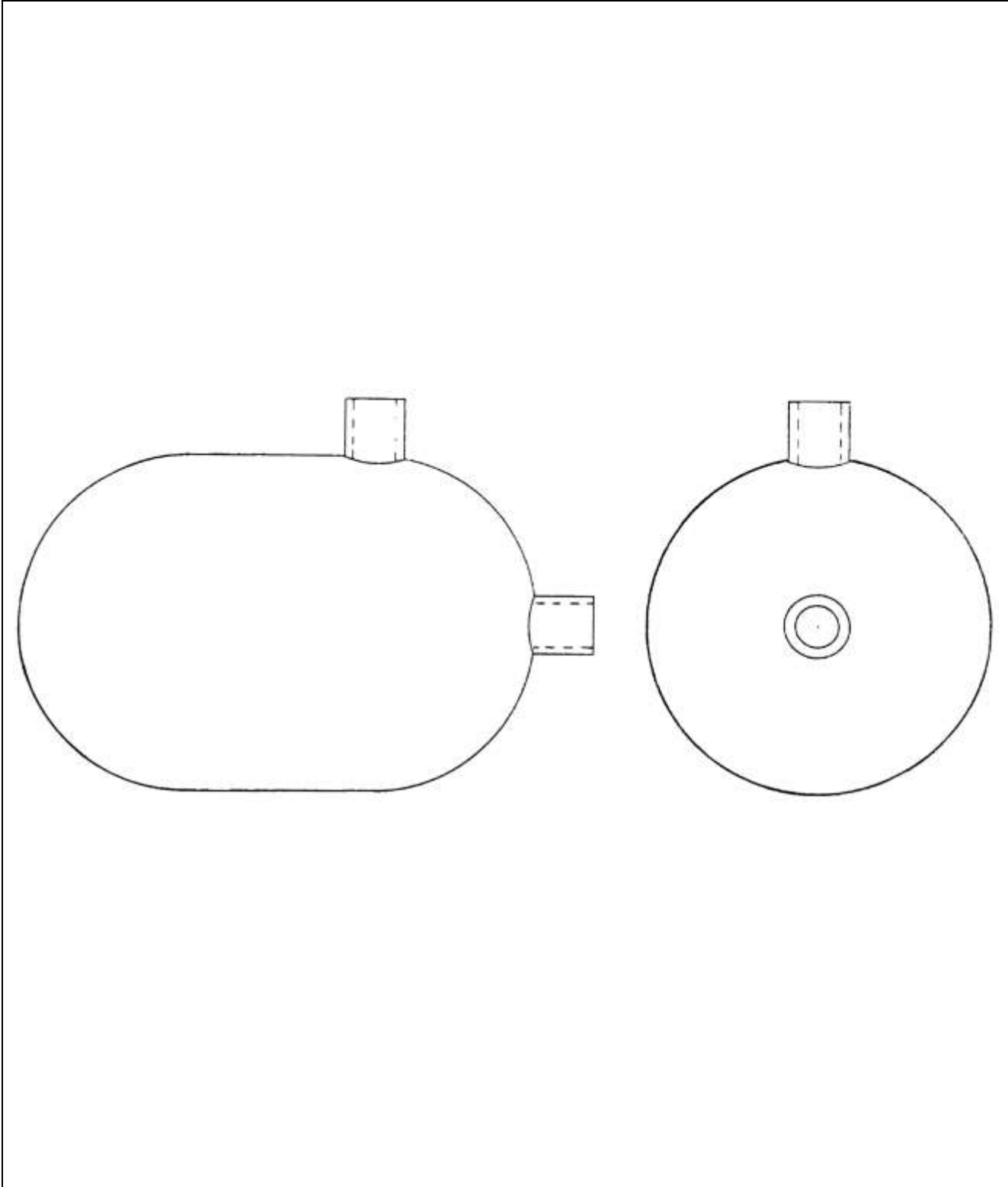


**Couplings**

PART NO.	OD	BORE, PUMP SIDE	BORE, MOTOR SIDE	USED WITH	DESCRIPTION
215AR5	4"	1.125"	1.375"	10 HP Motor	Coupling
215AR6	4.625"	1.125"	1.375"	15 HP Motor	Coupling
215AR7	4.625"	1.125"	1.625"	20 HP Motor	Coupling

# Hydraulic Muffler

**C-1050**



PART NO.	OD	LENGTH	DESCRIPTION
441AM2	10.75"	17"	Muffler, Hydraulic, with Couplings