

**C-1083A - 14 VEC Machine for 32RBC, 48RBC, and 32J, 44J, 48J Escalators & Escalaires**

**October 1, 1975**

**Page 1**

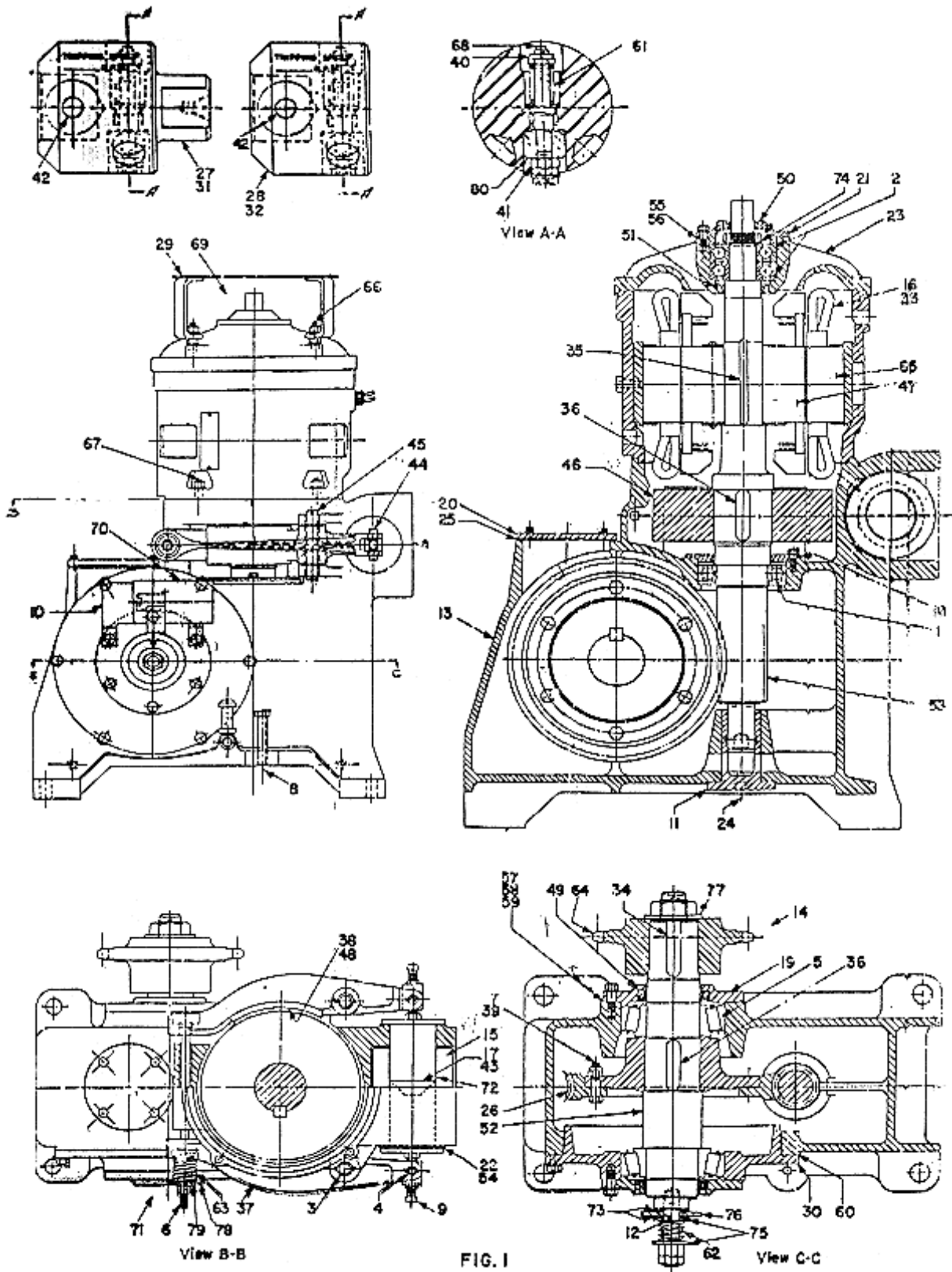
For Typical Arrangement and Parts Leaflet Index of Unit Assemblies, see

**C-1082 FOR TYPE 32RBC & 48RBC**

**C-1099 FOR TYPE 32J, 44J, & 48J**

C-1083A - 14 VEC Machine for 32RBC, 48RBC, and 32J, 44J, 48J Escalators & Escalaires

Page 2



**C-1083A - 14 VEC Machine for 32RBC, 48RBC, and 32J, 44J, 48J Escalators & Escalaires**

**Page 3**

PARTS FOR TYPE 14VEC MACHINE WITH 60ES OR 54ES MOTOR-FIG. 1

ORDER FORM: 0-344, 0-344-1, OJ-4 ML 2132F1, 2132F2 DWG. 7117A, 3-7117A

REF. NO.	PART NO.	QUAN-TITY	DESCRIPTION
1	207Z60	1	Bearing, Ball, Inside
2	207AR9	1	Bearing, Ball, Thrust
3	209A2	4	Bearing, Needle, 3/4 ID, 1" OD, Lever
4	209A10	4	Bearing, Needle, 11/16 ID, 7/8 OD, Lever
5	209B10	2	Bearing, Ball, Drive Shaft
6	60D47	1	Bolt, Brake 1/2 Dia., 13" Lg.
7	84C8	6	Bolt, Oversize Fin. 1/2-20, 2" Lg.
8	58XA156	1	Bolt, Base 5/8 Dia., 4" Lg.
9	65BA2	2	Bolt, (For Cores)
10	316ARW1	1	Bracket, (For 6098ZA Switch)
11	321DJ1	1	Bushing, Worm Shaft
12	335E40	1	Bushing, Drive Shaft
13	330EB1	1	Case, Gear
14 <i>For replacement of worm gear or worm shaft, furnish description and machine sales number. Also, see parts leaflet C-627.</i>	332AW10	1	Chain, Single, Main Drive, #100, 1-1/4 Pitch 140 Lg. (Rise Up To 15 Ft. For 32RBC & Rise Up To 10 Ft. 6" For 48RBC)
14 <i>For replacement of worm gear or worm shaft, furnish description and machine sales number. Also, see parts leaflet C-627.</i>	332AW11	1	Chain, Double, Main Drive, #100, 1-1/4 Pitch 140 Lg. (Rise Over 15 Ft. For 32RBC & Rise Over 10 Ft. 6" For 48RBC)
14 <i>For replacement of worm gear or worm shaft, furnish description and machine sales number. Also, see parts leaflet C-627.</i>	332AW23	1	Chain, Single, Main Drive, #100, 1-1/4 Pitch, 137.5" Lg. (For Rise Up To 15 Ft. For 32J) & (Rise Up To 10 Ft. 6" For 44J)
14 <i>For replacement of worm gear or worm shaft, furnish description and machine sales number. Also, see parts leaflet C-627.</i>	332AW24	1	Chain, Double, Main Drive, #100, 1-1/4 Pitch, 137.5" Lg. (For Rise Over 15 Ft. For 32J) & (Rise Over 10 Ft. 6" For 48J)

**C-1083A - 14 VEC Machine for 32RBC, 48RBC, and 32J, 44J, 48J Escalators & Escalaires**

REF. NO.	PART NO.	QUAN-TITY	DESCRIPTION
15	222KA5	1	Coil, Brake
16	<b>See Note</b>	1	Coil, Stator, Complete Set
17	400FG2	1	Core , Magnet, Male Section
17	400FH2	1	Core, Magnet, Female, With Pin #81BM1
18	346YT2	1	Cover, Bearing (For Brg. 207Z60)
19	346FC1	2	Cover, Drive Shaft Bearing
20	346AGP1	1	Cover, Hand Hole
21	B346LS1	1	Cover, Thrush Brg. (For Frame A358AS1)
22	353BB2	2	Disc, Brake, 4" Dia. 1/4" Thick
23	A358AS1	1	Frame, Motor Bearing
24	376DM1	6	Gaskets, 13/16 ID, 5/8 OD, 1/16 Th.
25	376EN1	1	Gasket, 3-3/8 ID, 5-1/8 OD, 1/16 Th.
26	<i>For replacement of worm gear or worm shaft, furnish description and machine sales number. Also, see parts leaflet C-627.</i>	1	Gear, Worm
27	6811A4 <i>Governor &amp; switches are optional dependent on local code. For service replacement furnish machine sales number.</i>	1	Governor, Overspeed, Complete
28	6811A6 <i>Governor &amp; switches are optional dependent on local code. For service replacement furnish machine sales number.</i>	1	Governor, Overspeed, Complete
29	384FJ3	1	Guard, Worm Shaft
30	396FW1	1	Housing, Drive Shaft Bearing
31	396DT1 <i>Governor &amp; switches are optional dependent on local code. For service replacement furnish machine sales number.</i>	1	Housing, Governor (For 6811A4)
32	A396DT1 <i>Governor &amp; Switches Are Optional Dependent On Local Code. For Service Replacement Furnish Machine Sales Number.</i>	1	Housing, Governor (For 6811A6)
33	<b>See Note</b>	1	Insulation, Stator, Complete Set

**C-1083A - 14 VEC Machine for 32RBC, 48RBC, and 32J, 44J, 48J Escalators & Escalaires**

REF. NO.	PART NO.	QUAN-TITY	DESCRIPTION
34	192D24	1	Key, 1/2 Sq. 4-1/8 Lg. (Drive Shaft)
35	192G146	1	Key, 3/8 Sq., 3-3/4 Lg. (54es Motor)
35	192G38	1	Key, 3/8 Sq., 5" Lg. (60ES Motor)
36	192G107	2	Key, 3/4 Sq., 3" Lg. (Brake Pulley To Shaft) & (Gear Hub To Drive Shaft)
37	286AW2	2	Lever, Brake, With Lining & Bushings
38	416AJ1	2	Lining, Brake, 2-3/4, 5-1/2 Lg., 1/4 Th.
39	67H9	6	Nut, 1/2-20 (Gear To Hub)
40	67R1	1	Nut, 1/4 Elastic Stop (Governor)
41	67T1	1	Nut, 1/4 Elastic Stop (Governor)
42	81AX28	1	Pin, Spring, 3/8 Dia., 2-1/2 Lg. (Governor)
43	81BM18	1	Pin, 1/2 Dia., 1-3/8 Lg. (For Core)
44	82R14	2	Pin, 11/16 Dia., 2-5/8 Lg. (Brake Lever To Bolt #65BA2)
45	82R16	2	Pin, 3/4 Dia., 5- 1/16 Lg. (Lever To Case)
46	196P1	1	Pulley, Brake
47	<b>See Note</b>	1	Rotor, Complete, Less Shaft
48	145C1 <i>For replacement of worm gear or worm shaft, furnish description and machine sales number. Also, see parts leaflet C-627.</i>	16	Rivet, 3/16 Dia., 5/8 Lg. (For Lining)
49	33B10	2	Seal, Oil, 3" ID, 4" OD, 15/52" Th. (For Drive Shaft)
50	33D15	1	Seal, Oil, 1-1/4 ID, 2-1/8 OD, 3/8 Th. (For Cover #B347IS1)
51	33D17	1	Seal, Oil, 2-1/16 ID, 3-1/16 OD, 3/8 Th. (For Frame A358AS1)
52	494JC2	1	Shaft, Drive, With Gear Hub, Pin & Key
53	<i>For replacement of worm gear or worm shaft, furnish description and machine sales number. Also, see parts leaflet C-627.</i>	1	Shaft, Worm And Motor, With Nut
54	255CK3	26	Shim, 3" ID, 4" OD, .008" Th, Brass (For Brake Disc)
55	255HB22	4	Shim 3-31/32" ID, 5-3/8" OD, .0075" Th. Plastic (For Cover B346Is1)
56	255HB23	3	Shim, 3-31/32 ID, 5-3/8 OD, .003" Th. Plastic (For Cover B346IS1)

**C-1083A - 14 VEC Machine for 32RBC, 48RBC, and 32J, 44J, 48J Escalators & Escalaires**

REF. NO.	PART NO.	QUAN-TITY	DESCRIPTION
57	255JA1	2	Shim, 6-1/32 ID, 7" OD,.003" Th. Plastic (For Drive Shaft Covers)
58	255JA2	2	Shim, 6-1/32 ID,7" OD,.0075" Th. Plastic (For Drive Shaft Covers)
59	255JA3	2	Shim, 6-1/32 ID,7" OD,.020" Th. Plastic (For Drive Shaft Covers)
60	255VB25	1	Shim, 12-17/32 ID,14" OD,.007" Th. Plastic (For Drive Shaft Housing)
61	90XA12	1	Spring, Compression, 11/32 ID, 1-9/16 Lg. (For Governor)
62	90CC1	1	Spring, 1-1/2 OD,1-1/2 Lg. (Drive Shaft)
63	90KC4	1	Spring, Brake 1-1/2 OD, 3-5/8 Lg.
64	195FN2	1	Sprocket, Drive, 22 T. Single, 1-1/4 Pitch
64	195FP2	1	Sprocket, Drive, 22 T. Double, 1-1/4 Pitch
64	195GH2	1	Sprocket, Drive, 20 Teeth, Double, 1-1/4 Pitch
64	195GJ2	1	Sprocket, Drive, 20 Teeth, Single, 1-1/4 Pitch
65	SEE NOTE	1	Stator, Complete
66	95BC1	4	Stud, 1/2 Dia., 3" Lg. (Guard 384fj3)
67	<i>Arrow indicates location, the parts themselves not showing in the illustration. 96H209</i>	4	Stud, 1/2 Dia.,2-1/4 Lg. (Motor Frame To Gear Case)
68	99F1	1	Stud, 1/4 Dia., 2-9/16 Lg. (For Governor)
69 <i>For replacement of worm gear or worm shaft, furnish description and machine sales number. Also, see parts leaflet C-627.</i>	6098D1 <i>For details, see parts leaflet C-919. Governor &amp; switches are optional dependent on local code. For service replacement furnish machine sales number.</i>	1	Switch, Mechanical, (For Governor)
70	6098ZA3 <i>For details, see parts leaflet C-919.</i>	1	Switch, Mechanical
71 <i>For replacement of worm gear or worm shaft, furnish description and machine sales number. Also, see parts leaflet C-627.</i>	7117B1 <i>Governor &amp; switches are optional dependent on local code. For service replacement furnish machine sales number.</i>	1	Switch, Micro
72	136R12	1	Tube, Magnet Core 3" OD,8-3/16 Lg.

**C-1083A - 14 VEC Machine for 32RBC, 48RBC, and 32J, 44J, 48J Escalators & Escalaires**

REF. NO.	PART NO.	QUAN- TITY	DESCRIPTION
73	128AL1	2	Washer, 7/8 ID, 2" OD, 1/8 Th.
74	130AA11	1	Washer, Lock, Keyed, 2-47/64 OD,.072 Th. (For Bearing 207AP9)
75	131BG1	2	Washer, Keyed, 29/32 ID, 2-1/8 OD, 5/32 Th. (For Drive Shaft)
76	131BE1	1	Washer, 1-3/8 ID, 3-1/2 OD, 1/4 Th. W/Notch 1/2 Deep (Drive Shaft)
77	127WB1	1	Washer, 1-17/32 ID, 3-1/4 OD, 3/16 Th. (For Sprocket)
78	127VB117	1	Washer, Spring Seat (Brake Bolt) 17/32 ID 2-1/8 OD, X 1/8
79	133AF1	1	Washer, Spring Seat (Brake Bolt)
80	344DA1	1	Weight, Brass (For Governor)

**NOTE:** when ordering, refer to data plate on motor and give material list applying to parts needed, also give the sales and serial numbers, all of which are stamped thereon.