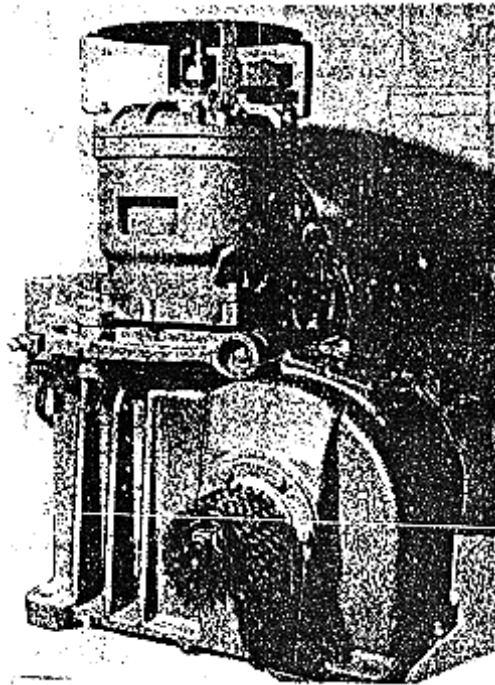


C-1084A 17 Vec Machine for Type 32RBC, 48RBC, and 32J, 44J, 48J Escalators & Escalaires

October 1, 1975

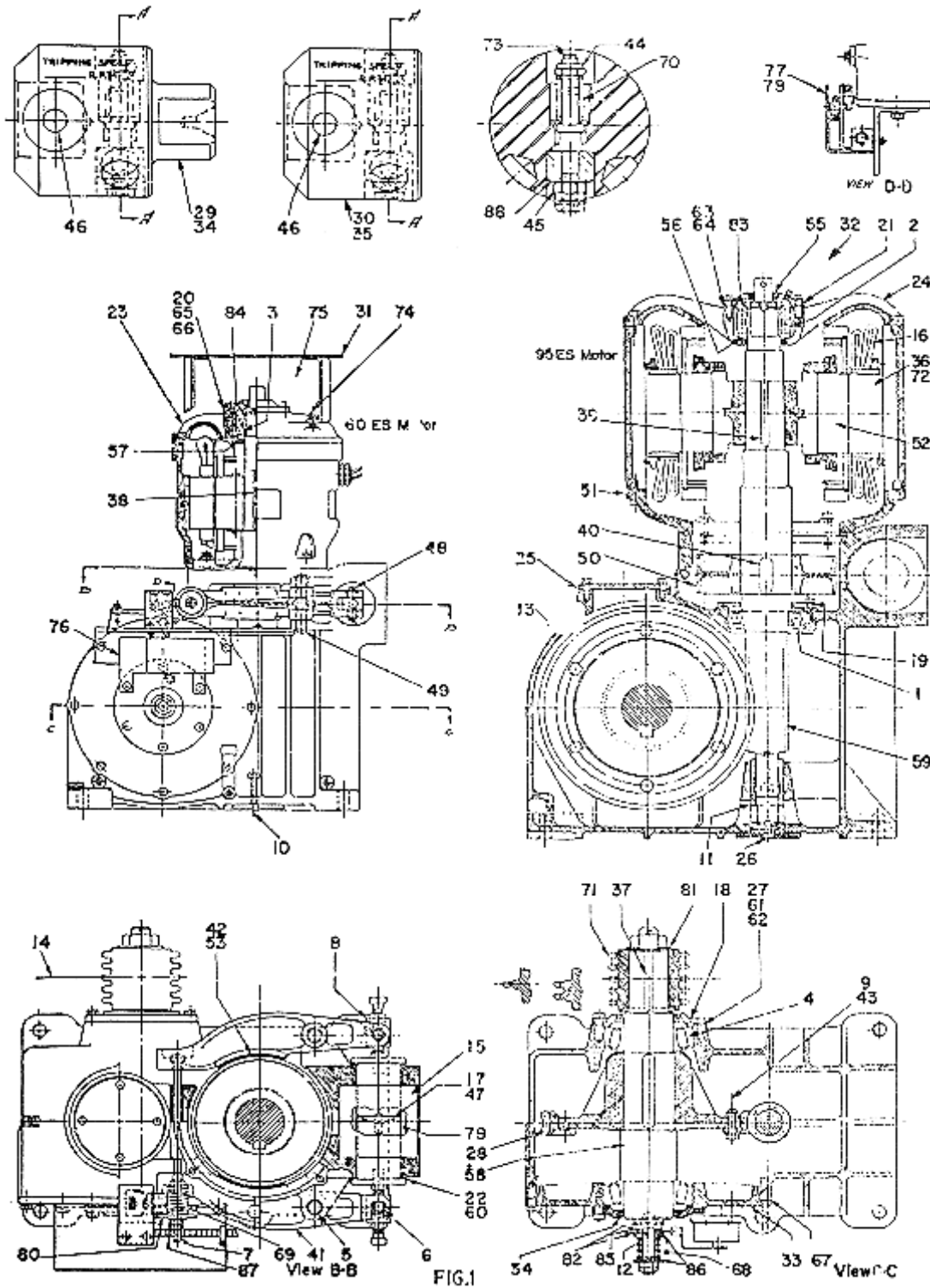
Page 1

For Typical Arrangement and Parts Leaflet Index of Unit Assemblies, see:
C-1082 FOR TYPE 32RBC & 48RBC
C-1099 FOR TYPE 32J, 44J & 48J



C-1084A 17 Vec Machine for Type 32RBC, 48RBC, and 32J, 44J, 48J Escalators & Escalaires

Page 2



C-1084A 17 Vec Machine for Type 32RBC, 48RBC, and 32J, 44J, 48J Escalators & Escalaires

Page 3

PARTS FOR TYPE 17VEC MACHINE-FIG.2

ORDER FORM: 0-345F-2,0-345F-3,0J-5

WITH 95ES MOTOR - ML 2132E6, E8 - DWG. A7054A, 3-7117A

WITH 60ES MOTOR - ML 2132E5, E7 - DWG. A7054B, 3-7117A

REF. NO.	PART NO.	QUANTITY	DESCRIPTION
1	207Z41	1	BEARING, BALL, INSIDE
2	207AR8	1	BEARING, BALL, THRUST (95ES MOTOR)
3	207AR9	1	BEARING, BALL, THRUST (60ES MOTOR)
4	209B19	2	BEARING, ROLLER, DRIVE SHAFT
5	209A3	4	BEARING, NEEDLE 7/8 ID,1-1/8 OD,1" LG.
6	209A6	4	BEARING, NEEDLE 7/8 ID,1-1/8 OD, 1/2 LG.
7	60D52	1	BOLT, BRAKE, W/NUT, 5/8 DIA., 16-1/2 LG.
8	65GA4	2	BOLT, 4-3/4 LG., (FOR CORES)
9	84C2	6	BOLT, OVERSIZE FIN. 5/8 DIA., 2-1/4 LG.
10	58XA24	1	BOLT, BASE
11	321BF2	1	BUSHING, WORM SHAFT
12	335E40	1	BUSHING, DRIVE SHAFT
13	B330DD1	1	CASE, GEAR
14	332AW10	1	CHAIN, SINGLE, MAIN DRIVE, #100, 1-1/4 PITCH, 140 LG. (RISE UP TO 15 FT. FOR 32RBC) & (RISE UP TO 10 FT. 6" FOR 48RBC)
14	332AW11	1	CHAIN, DOUBLE, MAIN DRIVE, #100, 1-1/4 PITCH, 140 LG. (RISE OVER 15 FT. FOR 32RBC) & (RISE OVER 10 FT. 6" FOR 48RBC)
14	332AW23	1	CHAIN, SINGLE, MAIN DRIVE, #100, 1-1/4 PITCH, 137.5" LG.(FOR RISE UP TO 15 FT. FOR 32J) & (RISE 10 FT. 6" FOR 44J)
14	332AW24	1	CHAIN, DOUBLE, MAIN DRIVE, #100, 1-1/4 PITCH, 137.5" LG. (FOR RISE OVER 15 FT. FOR 32J) & (RISE 10 FT. 6" FOR 48J)
15	222EN1	1	COIL, BRAKE
16	SEE NOTE	1	COIL, STATOR, COMPLETE SET
17	A400DT2	1	CORE, MAGNET, FEMALE WITH PIN #81BM1
17	A400DY1	1	CORE, MAGNET, MALE
18	346KW1	2	COVER, DRIVE SHAFT BEARING
19	346YT1	1	COVER, BEARING (FOR BRG. 2, <41)
20	B346LS1	1	COVER, THRUST BRG. (FRAME A3--58AS1)
21	346ABL1	1	COVER, THRUST BRG. (FRAME 358BE1)

C-1084A 17 Vec Machine for Type 32RBC, 48RBC, and 32J, 44J, 48J Escalators & Escalaires

22	353BA1	2	DISC, BRAKE, 4 DIA., 1/4 TH.
23	A358AS1	1	FRAME, 60ES MOTOR BEARING
24	358BE1	1	FRAME, 95ES MOTOR BEARING
25	376H10	1	GASKET, 4-3/4 ID, 6-1/2 OD, 1/16 TH.
26	376DM1	6	GASKET, 13/16 ID, 5/8 OD, 1/16 TH.
27	376JA8	2	GASKET, 6-7/16 ID, 8-1/8 OD, .006 TH.
28	ARROW INDICATES LOCATION, THE PARTS THEMSELVES NOT SHOWING IN THE ILLUSTRATION.	1	GEAR, WORM
29	6811A4 GOVERNOR & SWITCHES ARE OPTIONAL DEPENDENT ON LOCAL CODE. FOR SERVICE REPLACEMENT FURNISH MACHINE SALES NUMBER.	1	GOVERNOR, OVERSPEED, COMPLETE
30	6811A6 GOVERNOR & SWITCHES ARE OPTIONAL DEPENDENT ON LOCAL CODE. FOR SERVICE REPLACEMENT FURNISH MACHINE SALES NUMBER.	1	GOVERNOR, OVERSPEED, COMPLETE
31	334FJ3	1	GUARD, WORM SHAFT (60ES MOTOR)
32	ARROW INDICATES LOCATION, THE PARTS THEMSELVES NOT SHOWING IN THE ILLUSTRATION.	A384KX1	1 GUARD, WORM SHAFT (95ES MOTOR)
33	396EP1	1	HOUSING, DRIVE SHAFT BEARING
34	396DT1	1	HOUSING, GOVERNOR (FOR 6811A4)
35	A396DT1	1	HOUSING, GOVERNOR (FOR 6811A6)
36	SEE NOTE	1	INSULATION, STATOR, COMPLETE SET
37	192D24	1	KEY, 1/2 SQ., 4-1/8 LG. (DRIVE SHAFT)
38	192G38	1	KEY, 3/8 SQ., 5 LG. (60 ES MOTOR)
39	192G47	1	KEY, 1/2 SQ., 5-1/4 LG. (95ES MOTOR)
40	<192G17	1	KEY, 7/8, 5/8, 2-3/4 LG, (BRAKE PULLEY TO SHAFT)
41	A286AP2	2	LEVER, BRAKE, WITH LINING & BUSHINGS
42	416AJ2	2	LINING, BRAKE LEVER, 2-3/4, 5-1/2 LG. 1/4 THK.
43	67H11	6	NUT, 5/8 ELASTIC STOP (GEAR TO HUB)

C-1084A 17 Vec Machine for Type 32RBC, 48RBC, and 32J, 44J, 48J Escalators & Escalaires

44	67R1	1	NUT, 1/4 ELASTIC STOP, (GOVERNOR)
45	67T1	1	NUT, 1/4 ELASTIC STOP (GOVERNOR)
46	81AX28	1	PLN, SPRING, 3/8 DIA., 2-1/2 LG. (GOVERNOR)
47	81BM1 ARROW INDICATES LOCATION, THE PARTS THEMSELVES NOT SHOWING IN THE ILLUSTRATION.	1	PIN, 1/2 DIA.,1-3/8 LG. (FOR CORE)
48	82R13	2	PIN, 7/8 DIA.,3-1/16 LG.(BRAKE LEVER TO BOLT 65GA4)
49	82R15	2	PIN, 7/8 DIA.,5-1/8 LG. (LEVER TO CASE)
50	196J1	1	PULLEY, BRAKE, 10" DIA.,3" FACE
51	172JS1	1	RING, STATOR ADAPTER (95ES MOTOR)
52	SEE NOTE	1	ROTOR, COMPLETE, LESS SHAFT
53	145C1 ARROW INDICATES LOCATION, THE PARTS THEMSELVES NOT SHOWING IN THE ILLUSTRATION.	16	RIVET, 3/16 DIA.,5/8 LG. (FOR LINING)
54	33D3	2	SEAL, OIL, 3-1/2 L.D.,4-1/2 OD,7/16 THK. (COVER 346KW1)
55	33D15	1	SEAL,OIL,1-1/4 ID,2-1/8 OD,3/8 THK. (COVER B346LS1 OR 346ABL1)
56	33D16	1	SEAL, OIL,2-3/8 ID,3-3/16 OD,7/16 THK. (FRAME 358BE1)
57	33D17	1	SEAL, OIL,2-1/16 ID,3-1/16 OD,3/8 THK. (FRAME A358AS1)
58	494HK2	1	SHAFT DRIVE, WITH GEAR HUB, PIN & KEY
59	ARROW INDICATES LOCATION, THE PARTS THEMSELVES NOT SHOWING IN THE ILLUSTRATION.	1	SHAFT, WORM AND MOTOR, WITH NUT
60	255CK5	16	SHIM, 3-1/8 ID,4 OD,.008 THK. BRASS (FOR BRAKE DISC)
61	255HB11	2	SHIM, 6-13/32 ID,8-1/8 OD,.0075 THK. PLASTIC (DR. SHAFT COVERS)
62	255HB12	2	SHIM, 6-13/32 ID,8-1/8 OD,.003 THK. PLASTIC (DR. SHAFT COVERS)
63	255HB20	4	SHIM, 4-3/8 ID,5-3/4 OD,.003 THK. PLASTIC (COVER 346ABL1)
64	255HB21	3	SHIM, 4-3/8 ID,5-3/4 OD,.0075 THK. PLASTIC (COVER 346ABL1)
65	255HB22	4	SHIM, 3-31/32 ID,5-3/8 OD,.0075 THK. PLASTIC (COVER B346LS1)
66	255HB23	3	SHIM, 3-31/32 ID,5-3/8 OD,.003 THK. PLASTIC (COVER B346LS1)

C-1084A 17 Vec Machine for Type 32RBC, 48RBC, and 32J, 44J, 48J Escalators & Escalaires

67	255HB32	1	SHIM, 16-1/16 ID,17-3/4 OD,.003 THK. PLASTIC (DR. SHAFT HOUSING)
68	90CC1	1	SPRING, 1-1/2 OD, 1-1/2 LG. (DRIVE SHAFT)
69	90ZC3	1	SPRING, BRAKE 2 OD, 5-1/8 LG.
70	90XA12	1	SPRING, COMPRESSION 11/32 ID, 1-9/16 LG. (FOR GOVERNOR)
71	195FN2	1	SPROCKET, DRIVE, 22T. SINGLE, 1-1/4 PITCH
71	195FP2	1	SPROCKET, DRIVE, 22 T. DOUBLE, 1-1/4 PITCH
71	195GH3	1	SPROCKET, DRIVE, 21 TEETH, DOUBLE, 1-1/4 PITCH
71	195GJ3	1	SPROCKET, DRIVE, 21 TEETH, SINGLE, 1-1/4 PITCH
72	SEE NOTE	1	STATOR, COMPLETE
73	99F1	1	STUD, 1/4 DIA.,2-9/16 LG. (FOR GOVERNOR)
74	95BC1	4	STUD, 1/2 DIA., 3 LG. (GUARD 384FJ3)
75	5098D1+ GOVERNOR & SWITCHES ARE OPTIONAL DEPENDENT ON LOCAL CODE. FOR SERVICE REPLACEMENT FURNISH MACHINE SALES NUMBER.	1	SWITCH, MECHANICAL (FOR GOVERNOR)
76	6098ZA3+	1	SWITCH MECHANICAL
77	7054C1	1	SWITCH, W/MOUNTING ASSEMBLY (MICRO)
78	177AR2	2	SWITCH, MICRO
79	136R13	1	TUBE, MAGNET CORE 3-1/8 ID,8-13/16 LG.
80	127VE26	1	WASHER, 21/32 ID,3 OD, 1/8 THK. BRAKE
81	127WB1	1	WASHER, 1-17/32 ID, 3-1/4 OD, 3/16 THK. (FOR SPROCKET)
82	<128A1	2	WASHER, 7/8 ID, 2 OD, 1/8 THK. (FOR DRIVE SHAFT)
83	130AA1	1	WASHER, LOCK, KEYED, 2-59/64 OD,.058 THK. (FOR BEARING 207AR8)
84	130AA11	1	WASHER, LOCK KEYED, 2-47/64 OD,.<O THK. (FOR BEARING 207AR9)
85	131BE1	1	WASHER, 1-3/8 ID,3-1/2 OD, 1/4 THK., W/NOTCH 1/2" DEEP (DRIVE SHAFT)
86	131BG1	2	WASHER, KEYED, 29/32 ID,2-1/8 OD, 5/32 THK. (DRIVE SHAFT)
87	133AH1	1	WASHER, SPRING SEAT (BRAKE BOLT)
88	344DA1	1	WEIGHT, BRASS (FOR GOVERNOR)

NOTE: WHEN ORDERING, REFER TO DATA PLATE ON MOTOR AND GIVE MATERIAL LIST APPLYING TO PARTS NEEDED, ALSO GIVE THE SALES AND SERIAL NUMBERS, ALL OF WHICH ARE STAMPED THEREON.