

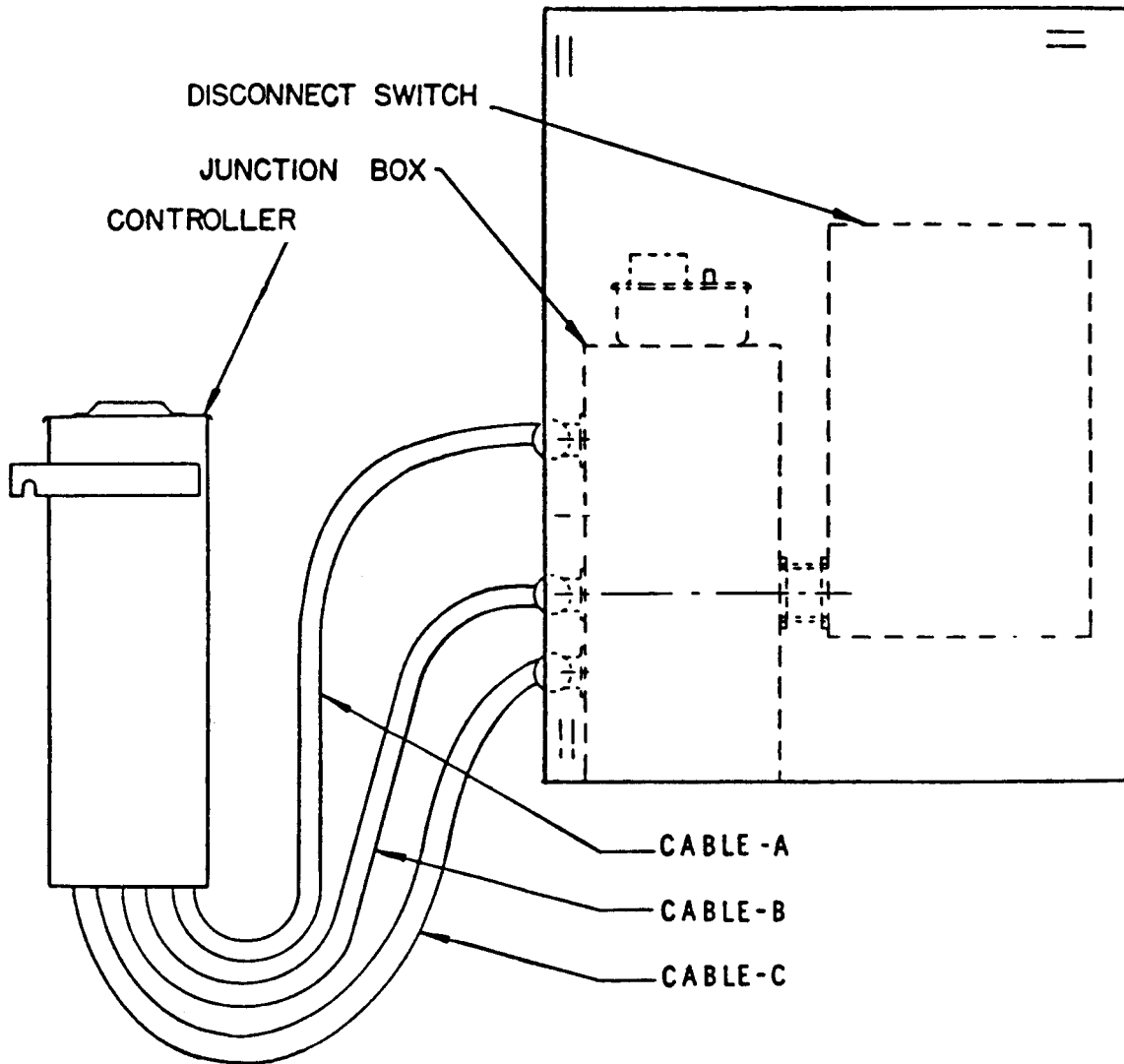
Controllers: Type J Escalator & Escal-Aire®

Spare Parts Leaflet C-1100A

October 20, 2006 / Page 1 of 14

Supersedes C-1100A Dated April 1997

See C-1099 for typical arrangement and parts leaflet index of unit assemblies.



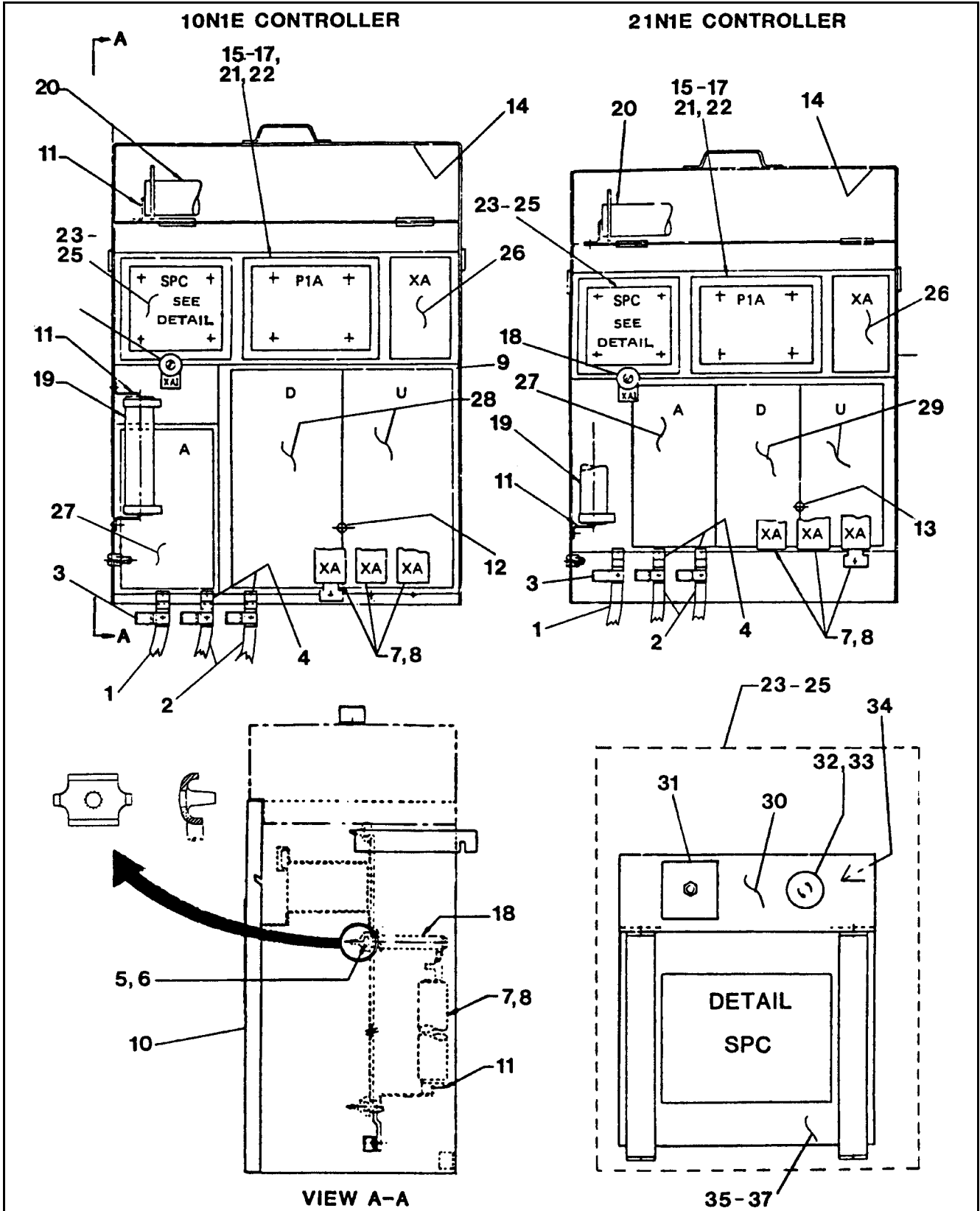
NOTE: Original Arrangement Illustrated;
Present Arrangement with
Disconnect Switch Mounted
to Controller.

Unpublished Work—©Otis Elevator Co.; 2006

OTIS

Safety First!

SERVICE ENGINEERING
Otis Elevator Company
Bloomfield, Connecticut USA



10N1E & 21N1E Controller

C-1100A

REF No.	PART No.	QTY	DESCRIPTION	SYMBOL
**1	C174Z1	1	Cable, 8 ft. Long, No. 18 AWG, w/12 Terminals	---
**2	C174Z2 C174Z3	2	Cable, 8 ft. Long, No. 9 AWG, w/7 Terminals	---
3	336DM1	1	Clamp	---
4	336DM4	2	Clamp	---
5	339BY1	11	Clip, B = 7/16 in.	---
6	339BY2	4	Clip, B = 9/32 in.	---
7	226H9	2	Condenser, 250 MFD	XA
*8	226H10	1	Condenser, 250 MFD, w/232AE1 Resistor	XA
**9	175J86	1	Conductor, Single, Ground, 8 in. Long	---
10	YYGOB346DE1	1	Cover	---
11	180AD1	10	Holder, Resistance Tube	---
12	B6543C1	1	Interlock, 10N1E, See SPL C-971	D-U
13	6543E1	1	Interlock, 21N1E	D-U
**14	429AP16	1	Lining, Inside Cover	---
*15	6315Y3	1	Relay, Thermal Overload When: 10 HP and 200-240 V or 15 or 20 HP and 440-575 V	P1A
*16	6315Y4	1	Relay, Thermal Overload When: 10 HP and 440-575 V	P1A
*17	6315Y6	1	Relay, Thermal Overload When: 15 or 20 HP and 200-240 V	P1A
18	232B220	1	Resistor, 1000 Ohm	XA1
19	232E207	1	Resistor	B
20	---	---	Resistor, Type 232AA, (See Table)	MO
21	---	3	Resistor, Type 232AP, Heater Element, (See Table)	1P, 2P, 3P
22	---	3	Resistor, Type 232AR, Heater Element, (See Table)	1P, 2P, 3P
23	A7130C2	1	Static Power Converter Assembly., 200-240 V (Consist Items: 30+34+35)	SPC
24	A7130C3	1	Static Power Converter Assembly., 440-480 V (Consist Items: 30+34+36)	SPC
25	A7130C4	1	Static Power Converter Assembly., 550-575 V (Consist Items: 30+34+37)	SPC

* **NOTE 1:** Recommended spare part.

****NOTE 2:** General location; parts not illustrated.

(Continued on next page)

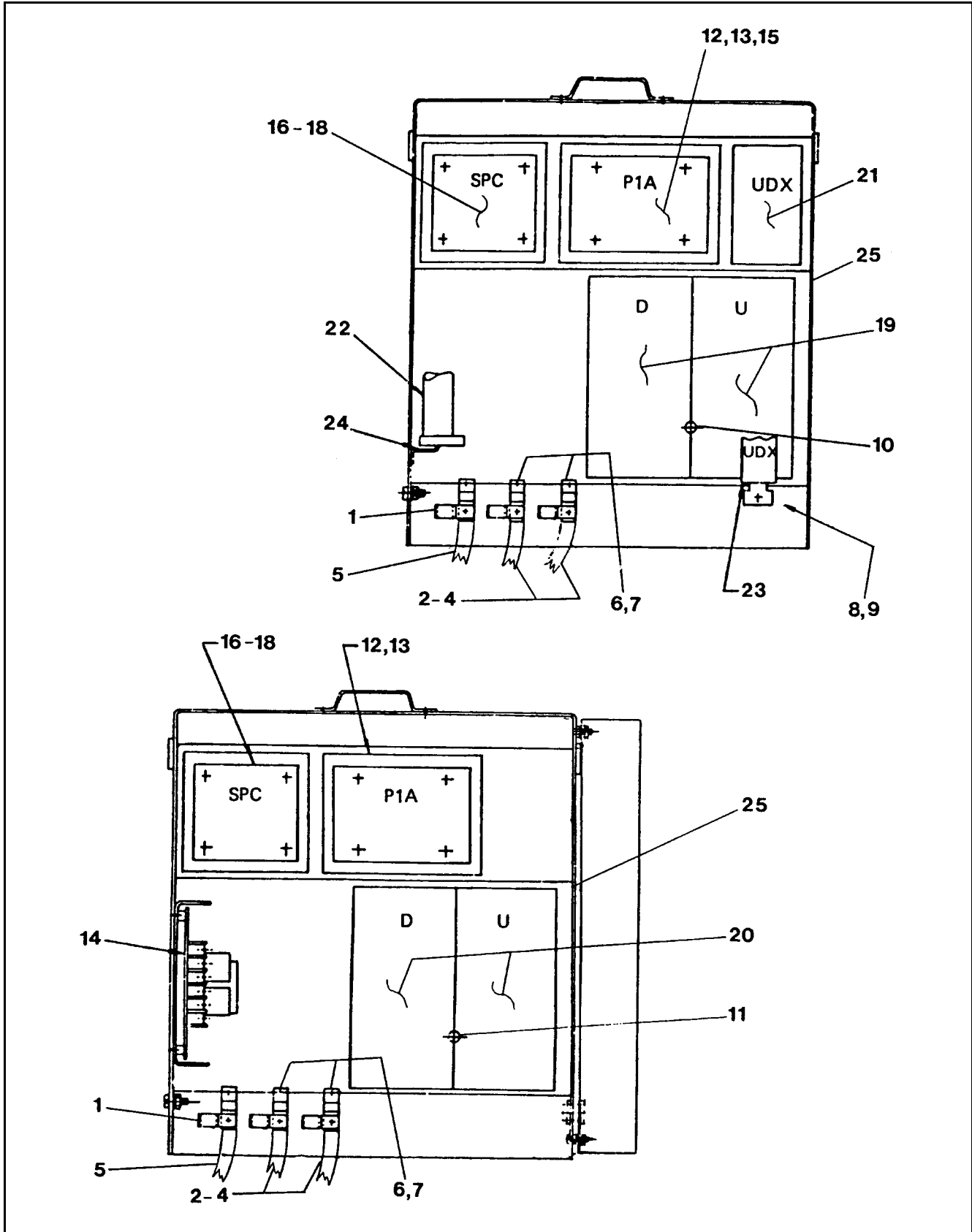
REF No.	PART No.	QTY	DESCRIPTION	SYMBOL
*26	A6164BP131-CY1 A6164BP131CY1	1	Switch, Magnet, Aux. Accelerating (see leaflet C-922)	XA
*27	E6754B120-EB1	1	Switch, Magnet, Accelerating (see leaflet C-1067)	A
*28	E6754A121-EB1	1	Switch, Magnet, w/10N1E (see leaflet C-1067)	D, U
*29	E6830A141-CV1 E6830A141CV1	2	Switch, Magnet, w/21N1E (see leaflet C-1068)	D, U
30	A7130C1	1	Power Converter Assembly (Consist Items: 31-33)	---
31	P230BK6	1	Rectifier	---
32	180AA1	1	Fuse Holder	---
*33	375P2 AAA375BT27	1	Fuse, 2 Amp	---
**34	P604A1 604F2	1	Varistor	---
**35	235BH1	1	Transformer, 220-240 V Primary	---
**36	235BH2	1	Transformer, 440-480 V Primary	---
**37	235BH3	1	Transformer, 550-575 V Primary	---

* **NOTE 1:** Recommended spare part.

****NOTE 2:** General location; parts not illustrated.

10N0E & 21N0E Controller

C-1100A



C-1100A**10N0E & 21N0E Controller**

REF No.	PART No.	QTY	DESCRIPTION	SYMBOL
**1	C174Z1	1	Cable, No. 18 AWG, w/12 Terminals, OD = 0.6 in.	---
**2	C174Z2	2	Cable, No. 9 AWG, w/7 Terminals, OD = 0.69 in.	---
**3	C174Z3	1	Cable, w/6 No. 8 & 1 No. 10 AWG Conductors	---
**4	C174Z4	2	Cable, w/3 No. 6 & 1 No. 10 AWG Conductors When: 10 HP & 200-208 V or 15 HP	---
5	336DM3	1	Electrical Clamp, ID = 0.625-0.6875 in.	A
6	336DM4	1	Electrical Clamp, ID = 0.750-0.8125 in.	C
7	336DM5	2	Electrical Clamp, ID = 0.875-0.9375 in.	B, D
8	339BY1	5	Clip, B = 7/16 in.	---
9	339BY2	3	Clip, B = 9/32 in.	---
10	B6543C1	1	Interlock, 10N0E (See leaflet C-971)	D-U
11	6543E1	1	Interlock, 21N0E	D-U
12	6315Y3	1	Relay, Thermal Overload When: 10 or 15 HP and 200-240 V	P1A
13	6315Y4	1	Relay, Thermal Overload When: 5, 7.5, 10, or 15 HP and 440-575 V	P1A
*14	7156B2	1	Under-Overspeed Switch (215 EEC Machine Only)	L1S, OS
**15	---	3	Resistor, Type 232AP, Heater Element (See pp. 7, 9)	P1A
*16	A7130C2	1	Static Power Converter Assembly, 200-240 V (See detail pp. 3-4)	SPC
17	A7130C3	1	Static Power Converter Assembly, 440-480 V (See detail pp. 3-4)	SPC
18	A7130C4	1	Static Power Converter Assembly, 550-600 V (See detail pp. 3-4)	SPC
*19	E6754A121-EB1	2	Switch, Magnet, w/10N0E (See leaflet C-1067)	D, U
*20	E6830A141-CV1	2	Switch, Magnet, w/21N0E (See leaflet C-1068)	D, U
*21	A6164B131-CY1	1	Switch, Magnet (14 & 17 VEC machine) (See leaflet C-922)	UDX
22	232E183	1	Resistor, 500 Ohms, w/2 Bands 297H2	B
*23	226H10	1	Condenser, 250 MFD, w/232AE1 Resistor	UDX
24	180AD1	2	Resistor Tube Holder	---
**25	175J86	1	Conductor, Single-Ground, 8 in. Length	---

* **NOTE 1:** Recommended Spare Part.

****NOTE 2:** General location; parts not illustrated.

Resistors for 10 & 21N1E Controller

C-1100A

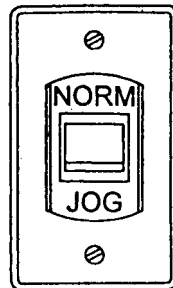
OVERLOAD SWITCH (P1A)			
MOTOR HP	VOLTAGE	SWITCH	HEATER ELEMENT (3)
10	200-208	6315Y3	232AP26
	220-240		232AP25
	440-480	6315Y4	232AP18
	550-575		232AP16
15	200-208	6315Y6	232AR6
	220-240		232AR11
	440-480	6315Y3	232AP22
	550-575		232AP19
20	200-208	6315Y6	232AR2
	220-240		232AP7
	440-480	6315Y3	232AP25
	550-575		232AP22

DISCONNECT SWITCH (SK)				
MOTOR HP	VOLTAGE	SWITCH	FUSE (3)	RATING
10	200-208	A6315W1	P375Y45	45
	220-240			
	440-480	A6315W3	375W25	25
	550-575		375W20	20
15	200-208	A6315W4	P375Y70	70
	220-240			
	440-480	A6315W3	375W25	25
	550-575			
20	200-208	A6315W4	P375Y100	100
	220-240			
	440-480	A6315W2	375W50	50
	550-575			

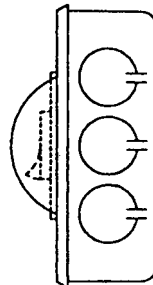
(Continued on next page)

RESISTOR (MO)					
MOTOR HP	VOLTAGE	PART NO.	QTY	OHMS	CONN.
10	200-208	232AA16 232AA46	3	2.14	Parallel
	220-240	232AA17 232AA47	3	3.09	Parallel
	440-480	232AA14 232AA44	3	11.46	Series
	550-575	232AA16 232AA46	3	18.36	Series
15	200-208	232AA16 232AA46	4	1.53	Parallel
	220-240	232AA17 232AA47	4	2.32	Parallel
	440-480	232AA14 232AA44	3	11.46	Series
	550-575	232AA16 232AA46	3	18.36	Series
20	200-208	232AA14 232AA44	4	0.95	Parallel
	220-240	232AA15 232AA45	4	1.23	Parallel
	440-480	232AA10 232AA40	4	5.28	Series
	550-575	232AA11 232AA41	4	6.60	Series

Jog Enable Switch (optional)
 (see TIP 30.7.1-13, *Escalator Jog Circuit*)



AAA26200A1
AAA26200A2



(SWITCH AND BOX)
 (AAA226200A1 + WIRING,
 MTG HDWR & TIP 30.7.1-13)

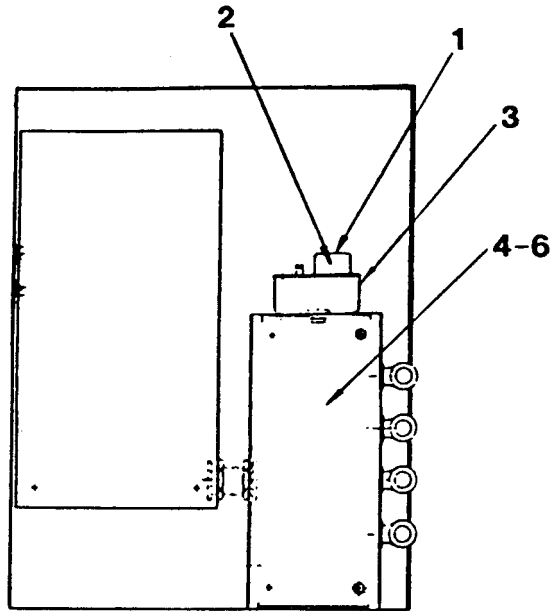
Resistors for 10 & 21NOE Controller

C-1100A

OVERLOAD SWITCH (P1A)			
MOTOR HP	VOLTAGE	SWITCH	HEATER ELEMENT (3)
5	200-208	6315Y4	232AP20
	220-240		232AP18
	440-480		232AP10
	575		232AP9
7.5	200-208	6315Y4	232AP24
	220-240		232AP23
	440-480		232AP16
	550-575		232AP14
10	200-208	6315Y3	232AP26
	220-240		232AP25
	440-480	6315Y4	232AP18
	550-575		232AP16
15	200-208	6315Y3	232AP42
	220-240		232AP28
	440-480	6315Y4	232AP22
	550-575		232AP19

DISCONNECT SWITCH (SK)				
MOTOR HP	VOLTAGE	SWITCH	FUSE (3)	RATING
5	200-208	A6315W1	375Y25	25
	220-240		375Y20	20
	440-480	A6315W3	375W15	15
	550-575		375W10	10
7.5	200-208	A6315W1	375Y35	35
	220-240		375Y30	30
	440-480	A6315W3	375W20	20
	550-575		375W15	15
10	200-208	A6315W1	P375Y45	45
	220-240		375Y40	40
	440-480	A6315W3	375W25	25
	550-575		375W20	20
15	200-208	A6315W1	375Y60	60
	220-240		375Y50	50
	440-480	A6315W3	375W30	30
	550-575		375W25	25

A6630J Junction Box Assembly

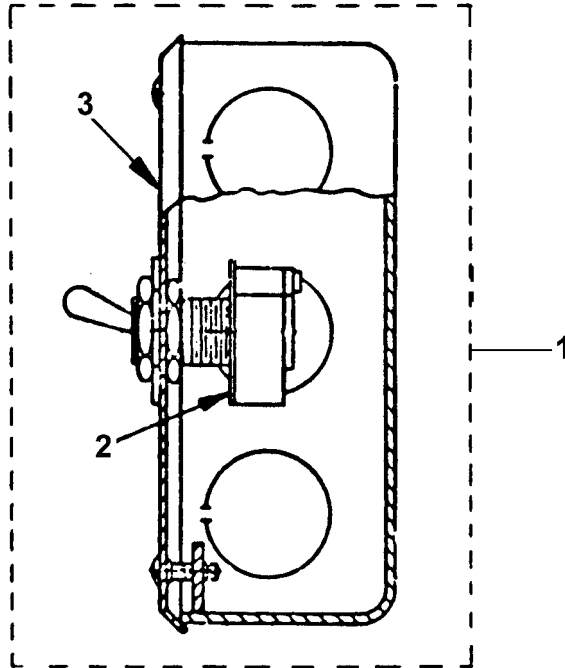


REF No.	PART No.	QTY	DESCRIPTION
1	P339HL1	1	Holder, Fuse
2	P375AG1	1	Fuse, Plug, 10 Amp
3	V309AV2	1	Outlet Box
*4	303AX1	3	Terminal Board, 1-5/8 x 1-9/16 in.
*5	303AR1	7	Terminal Board, Double
*6	303AR2	2	Terminal Board, Single

* General location; parts not illustrated.

7300AL Service Cutout Switch

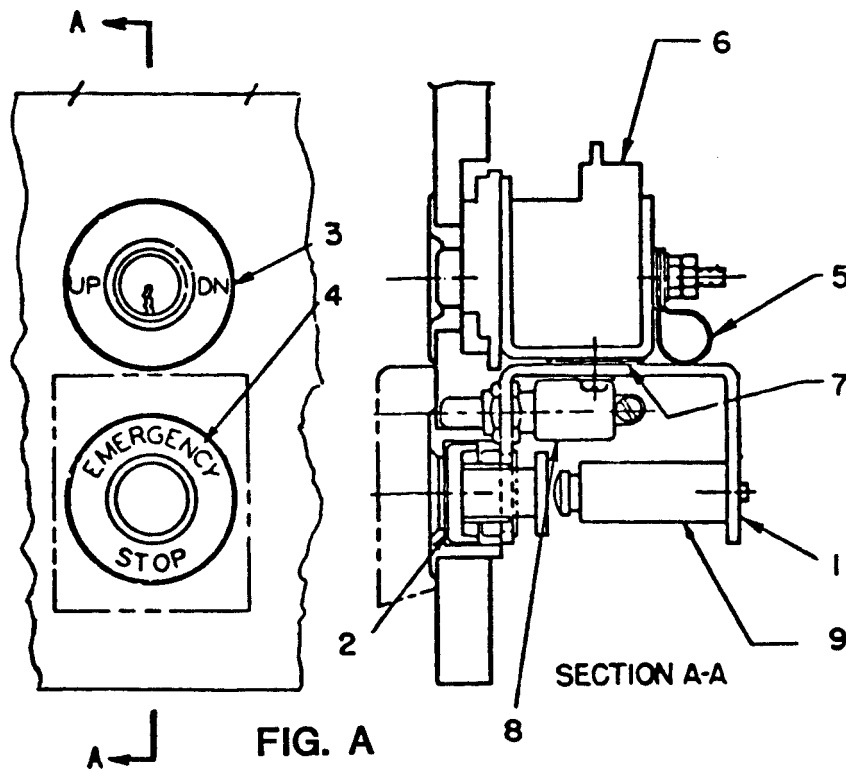
C-1100A



REF No.	PART No.	QTY	DESCRIPTION
1	7003AL2 AAA22800H401	1	Cutout Switch, Complete
2	P177BY1	1	Toggle Switch
3	346AME2	1	Cover

NOTE: Service cutout switch is located at lower landing.

Emergency Stop Fixture

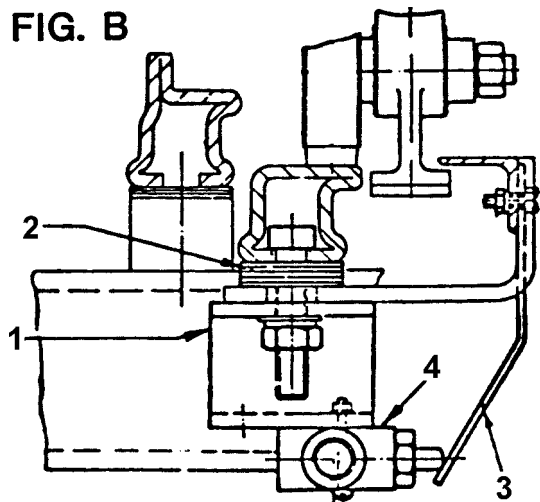


Form OJ-2 & OJ-3 DWG A6533Y
M. L. 4602A5 w/o Alarm Signal
M. L. 4602A6 w/Alarm Signal

REF No.	PART No.	QTY	DESCRIPTION
1	A316CHN1	1	Bracket
2	323BDZ A323BD7-Emerg Call	1	Button, Push, Red
3	VP-725810 AAA340BY3	1	Bushing, UP-DN
4	VP-725814 AAA340BY4	1	Bushing, EMERG. STOP
5	336CZ8	1	Clamp
6	6410E6	1	Contact, Key, Operated w/ A431C3 Lock, 815871 Key
7	255AB37	6	Shim
8	V6599J1	1	Switch, Pushbutton, Alarm
9	7035A8 7035A101	1	Unit, Pushbutton, Single Making-Breaking

Micro Switch at Lower Landing Curved Step Wheel Upthrust Track

C-1100A

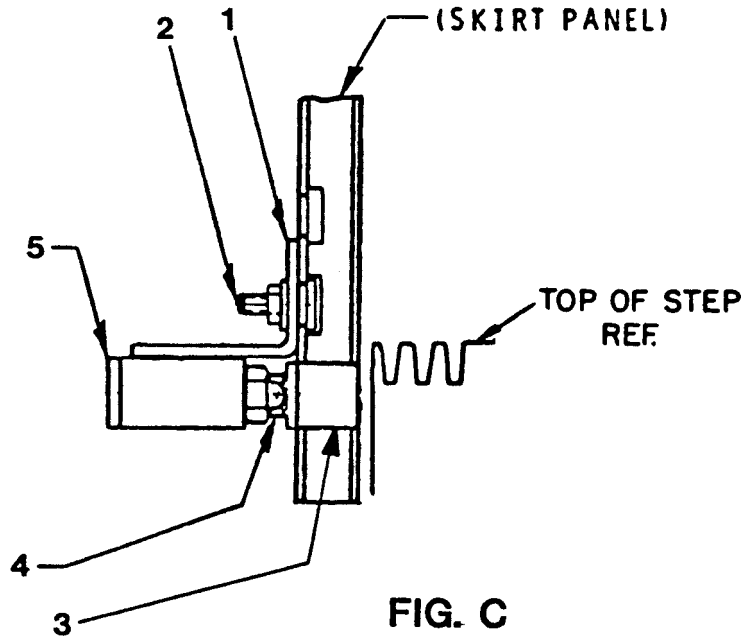


DWG YYGO6814JC
M. L. 4602A3

REF No.	PART No.	QTY	DESCRIPTION
1	GX316BRM500	4	Bracket
2	GO255BP6	20	Shim
3	GO446B1	4	Strip, Contact
4	7009A2	4	Switch, Micro

C-1100A

Micro Switch at Upper & Lower Landing Skirt Panel



Form OJ-2 & OJ-3 DWG 7115KE

M. L. 7115KE1

REF No.	PART No.	QTY	DESCRIPTION
1	272BFR1	1	Angle
2	65EK4 GAA65DP1	1	T-Bolt
3	251BN3	1	Insert, 1-1/2 in. Deep
4	90YA6	1	Spring
5	7009A3	1	Switch, Micro
6	251BN1	1	Insert, 3/4 in. Deep