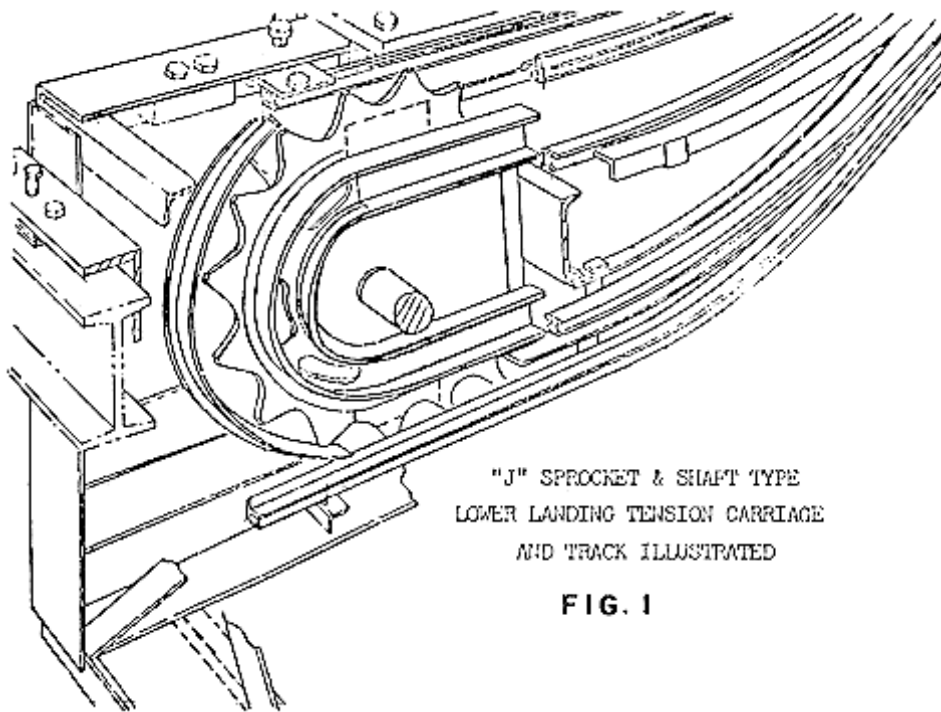


**C-1102 - Tension Carriage for "J" Escalator & Escal-Aire, Rigid & Shaft with Sprocket Types**

**November 1, 1975**

**Page 1**

(SEE C-1099 For Typical Arrangement Dwg. and Parts Leaflet Index of Unit Assemblies)

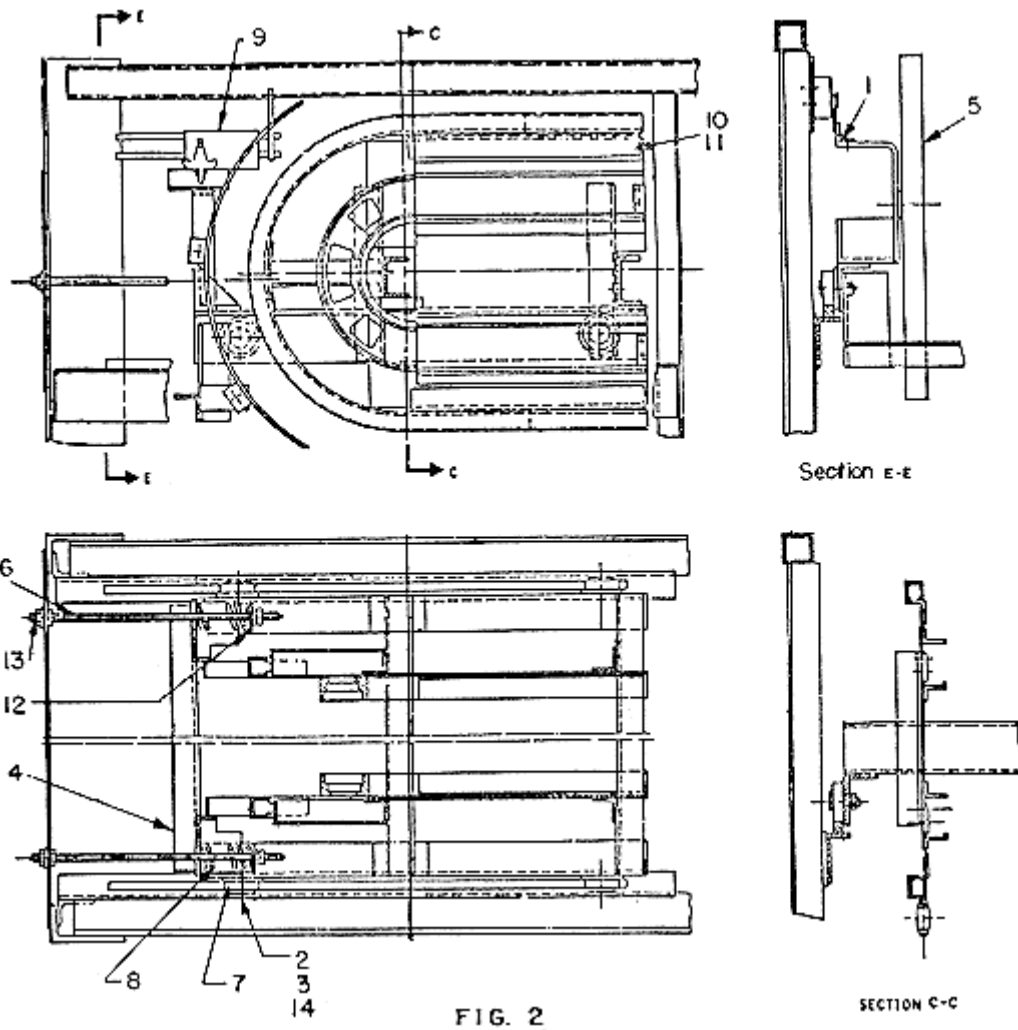


"J" SPROCKET & SHAFT TYPE  
LOWER LANDING TENSION CARRIAGE  
AND TRACK ILLUSTRATED

**FIG. 1**

C-1102 - Tension Carriage for "J" Escalator & Escal-Aire, Rigid & Shaft with Sprocket Types

Page 2



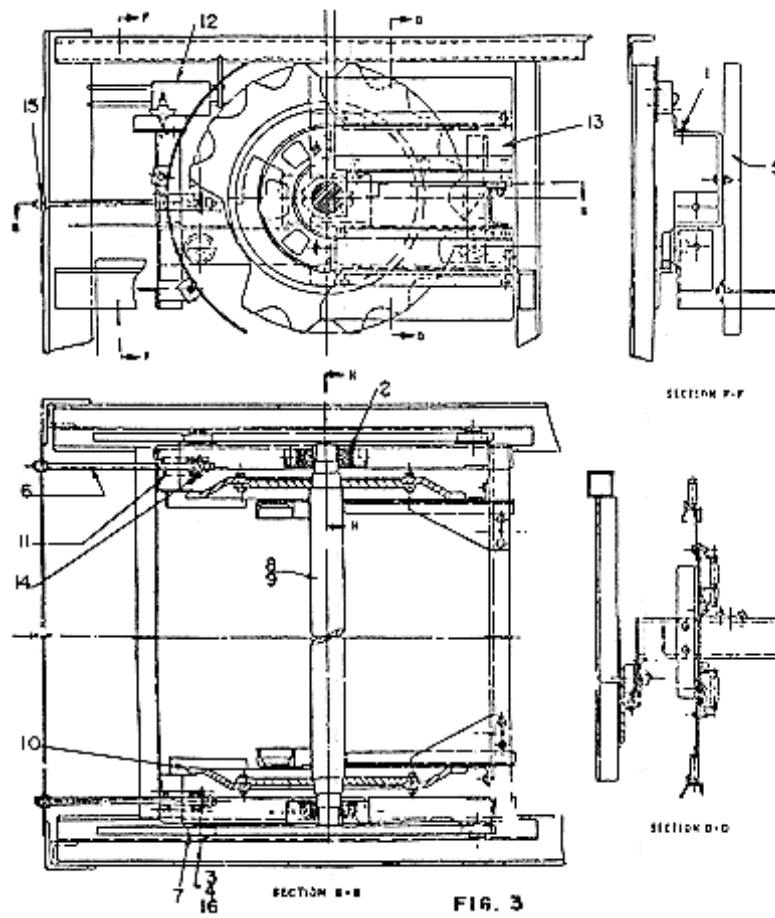
**C-1102 - Tension Carriage for "J" Escalator & Escal-Aire, Rigid & Shaft with Sprocket Types**

TENSION CARRIAGE FOR "J" ESCALATOR & ESCAL - AIRE FIG. 2  
 (AT LOWER LANDING FOR STEP CHAIN TRACKED DESIGN - RIGID)  
 ML 4601C38 - 32J, ML 4601C39 - 44J, ML 4601C40 - 48J  
 GEN. ARR. DWG. YX9701CJ

REF. NO.	PART NO.	QUANTITY	DESCRIPTION
1	YYG0272ANB1	2	ANGLE
2	GO77FD1	1	BOLT, SHOULDERED
3	GX335E505	4	BUSHING IMPREGNATED
4	YXG0A374FH1	1	FRAME - 32-J
4	YXG0A374FH2	1	FRAME - 44-J
4	YXG0A374FH3	1	FRAME - 48-J
5	YYG0A385BF1- YYG0A385BF2	1	GUARD CHAIN WHEEL
6	G096VD2	2	ROD, THREADED
7	G0456AD1	4	ROLLER
8	90AD10	2	SPRING, TENSION CARRIAGE
9	6098D1	1	SWITCH
9	6098D3	1	SWITCH
10	YYG0483MW1	1	TRACK RETURN ASS'Y
11	YYG0483MW2	1	TRACK RETURN ASS'Y
12	YYG0133F1	2	WASHER, SPRING SEAT
13	YYG0127BH1	2	WASHER
14	127VB5	-	WASHER

C-1102 - Tension Carriage for "J" Escalator & Escal-Aire, Rigid & Shaft with Sprocket Types

Page 3



**C-1102 - Tension Carriage for "J" Escalator & Escal-Aire, Rigid & Shaft with Sprocket Types**

TENSION CARRIAGE FOR "J" ESCALATOR & ESCAL-AIRE FIG. 3  
 (AT LOWER LANDING FOR STEP CHAIN WITH SPROCKET & SHAFT)  
 ML 4601034 - 32-J ML 4601C35 - 44-J ML 4601C36 - 48-J  
 GEN ARR. DWG. YX9701AA SHIPPING UNIT. 1-3

REF. NO.	PART NO.	QUANTITY	DESCRIPTION
1	YYG0272ANB1	2	ANGLE
2	BRG SKF-SY50FJ	2	BEARING, PILLOW BLOCK
3	G077FD1	1	BOLT, SHOULDERED
4	GX335E505	4	BUSHING
5	YYG0A385BF1- YYG0A385BF2	1	GUARD, CHAIN WHEEL
6	G096VD2	2	ROD, THREADED
7	G0456AD1	4	ROLLER
8	YYG0494BX4	1	SHAFT COMPLETE 32-J
8	YYG0494BX5	1	SHAFT COMPLETE 44-J
8	YYG0494BX6	1	SHAFT COMPLETE 48-J
9	G0494BT1	1	SHAFT ONLY 32-J
9	G0494BT2	1	SHAFT ONLY 44-J
9	G0494BT3	1	SHAFT ONLY 48-J
10	G0195BS1	2	SPROCKET
11	90AD10	2	SPRING
12	6098D1	1	SWITCH
12	6098D3	1	SWITCH
13	YYG0B483JJ1	1	TRACK CONNECTION
13	YYG0B483JJ2	1	TRACK CONNECTION
14	YYG0133F1	2	WASHER, SPRING SEAT
15	YYG0127BH1	2	WASHER
16	127VB5	-	WASHER

C-1102 - Tension Carriage for "J" Escalator & Escal-Aire, Rigid & Shaft with Sprocket Types

Page 4

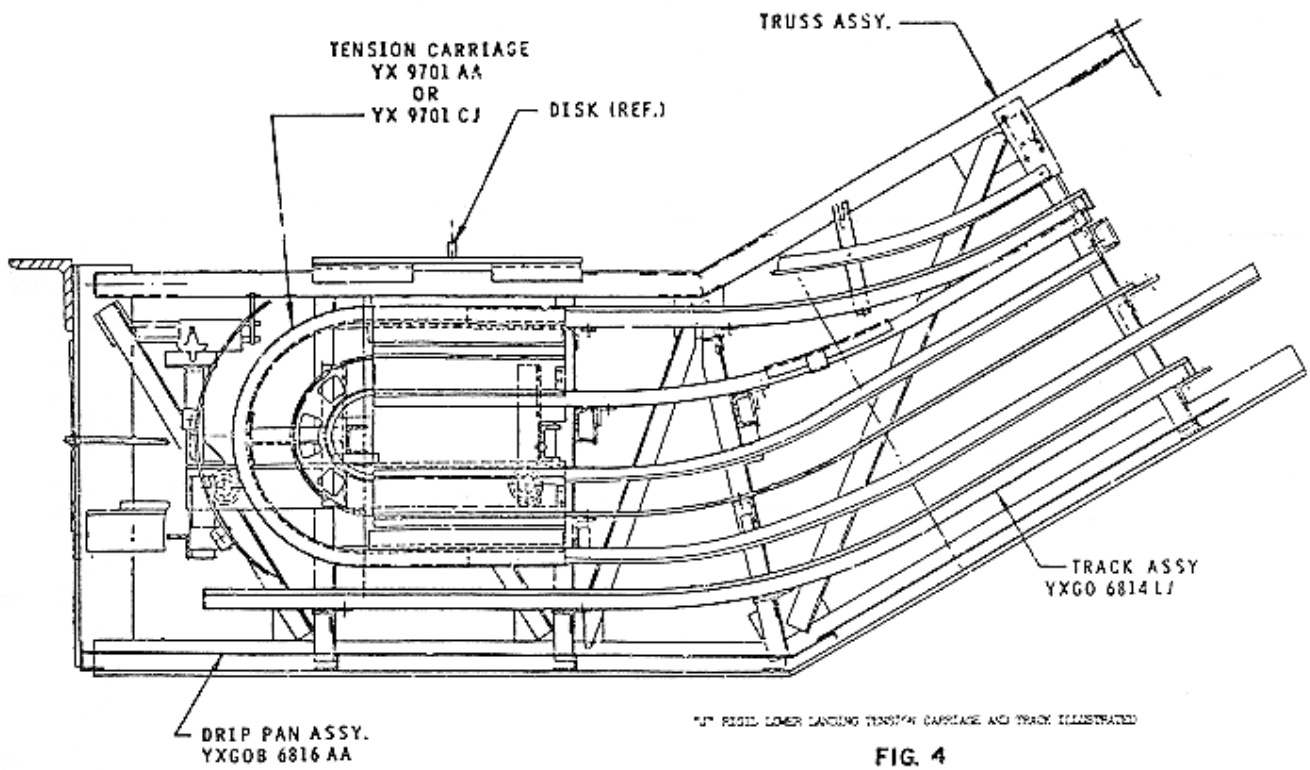


FIG. 4